

Wireless Audio USB Kit

Instruction Book Draft

Safety Information

Information for Users on Disposal of Old Equipment



Attention:
This symbol is only valid in the European Union.

[European Union]

This symbol indicates that the electrical and electronic equipment should not be disposed as general household waste at its end-of-life. Instead, the product should be handed over to the applicable collection point for the recycling in accordance with your national legislation.

By disposing of this product correctly, you will help to conserve natural resources and will help prevent potential negative effects on the environment and human health that could otherwise be caused by inappropriate waste handling of this product. For more information about collection point and recycling of this product, please contact your local municipal office, your household waste disposal service or the shop where you purchased the product.

Penalties may be applicable for incorrect disposal of this waste, in accordance with national legislation.

[Other Countries outside the European Union]

If you wish to dispose of this product, please do so in accordance with applicable national legislation or other rules in your country for the treatment of old electrical and electronic equipment.

FCC

This device complies with Part 15 of the FCC Rules Operation that is subject to following two conditions:

- (1) This device may not cause harmful interference and,
- (2) This device must accept any interference received, including interference that may cause undesired operation.

Warning: Changes or modifications to this unit not expressly approved by the party responsible for compliance could void the user authority to operate the equipment.

Introduction

Thank you for purchasing an AW1 Wireless Audio USB Kit from Audioengine. Your AW1 uses a proprietary 2.4GHz wireless communication system that enables you to securely establish connection between your personal computer and speaker system, through which you can enjoy listening to music files stored remotely.

Compact in size and easy to setup, the system also allows connectivity with up to eight receivers, which you can share and listen to music from different locations.

Packing

Examine the contents of the box for your Wireless Audio USB Kit. The box should contain:

- A Sender
- A Receiver
- Two 3.5mm stereo cables
- A switching power adapter
- A user manual

Functional Overview

The appearance of Sender and Receiver are the same except the audio jack symbol marked on the bottom.



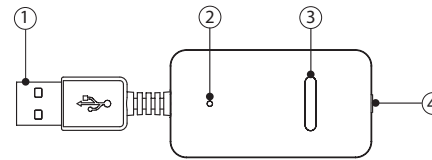
Sender (Bottom View)



Receiver (Bottom View)

The symbol with an arrow "going in" represents that audio is transmitted from an audio player (such as computer, MP3 player, iPod, etc.) to the Sender.

The symbol with an arrow "going out" represents that audio is transmitted from the Receiver to a speaker system.



1. USB Plug
2. LED Indicator
3. Connect Button
4. Audio Jack

Connection

Caution:

- Turn off your audio player and speaker system that you want to connect to before connection.
- Do not connect the Sender to any audio system through the USB plug. Use the supplied stereo cable only.
- Connect the switching power adapter only after all other connections are completed.

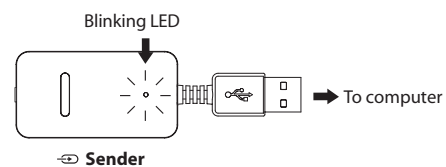
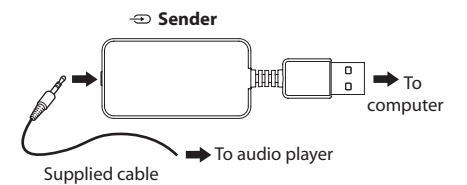
B. Listening from your audio player

1. Connect the USB plug of Sender to a computer.
2. Connect the other end of Sender to your audio player with the supplied stereo cable.
- The LED indicator blinks at a lower rate on the Sender.

[Connecting the Sender]

A. Listening from your computer

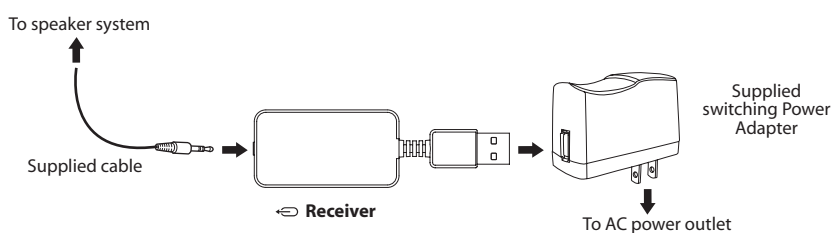
1. Connect the USB plug of Sender to your computer.
- The LED indicator blinks at a lower rate on the Sender.



[Connecting the Receiver]

1. Connect the audio output jack of Receiver to your speaker system with the supplied cable.

2. Connect the USB plug of Receiver to the supplied switching power adapter.
3. Plug the switching power adapter into a AC power outlet.
 - The LED indicator blinks at a lower rate on the Receiver.

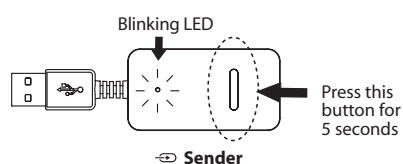


Using the Wireless Audio USB Kit

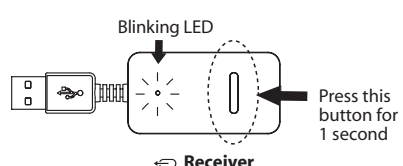
Caution: Keep far away from any obvious radio frequency interference sources when using the wireless Audio USB kit.

[Establishing Communication between the Sender and Receiver]

1. Hold the **CONNECT** button on the Sender for 5 seconds.
 - The LED indicator blinks at a faster rate on the Sender.



2. Hold the **CONNECT** button on the Receiver for 1 second.
 - The LED indicator blinks at a faster rate on the Receiver.



Note:

- During the period of "pair mode", the LED indicators blink at a faster rate on the Sender and Receiver.
- When an active link is established between the Sender and Receiver, the LED indicators are solid on.
- The maximum operation distance between the Sender and Receiver can be up to 30m (No obstacle).

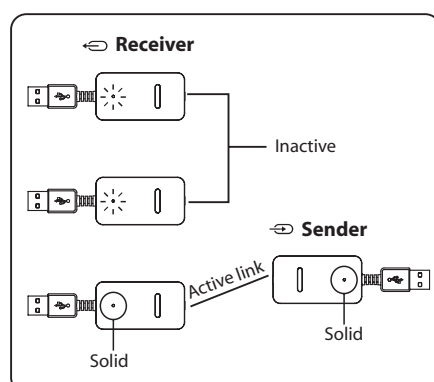
[When Connecting to More Receivers]

The system allows you to connect up to Eight Receivers at the same time but only one active link can be established at once.

1. Make sure communications are established between the Sender and all Receivers from which the audio can be transmitted.

Note: At least there is one active link established with one Receiver, remaining other Receivers inactive. The LED indicators blink at a lower rate on inactive Receivers.

2. If the active link is not established with the desired Receiver, hold the **CONNECT** button on the Sender to connect with another Receiver. Each time an active link is established, the LED indicators on the Sender and Receiver are solid on.
3. Repeat step 2 until the active link is established with the desired Receiver.



[Listening to the System]

A. If the sound source is from your computer,

Caution: The system cannot play music files at your computer if an audio player is connected to the Sender.

1. Launch "Windows Media Player" or another media player program.
2. Select your favorite music to play.
3. Adjust volume on either your computer or speaker system.

B. If the sound source is from your audio player,

1. Turn on your audio player.
2. Select the desired music and press "Play" button.
3. Adjust volume on either your audio player or speaker system.

[Breaking up the Link]

1. After you finish using the system, unplug the Sender and Receiver. The pair is disconnected.

Technical Specifications

Item	Condition	Specifications
Output level	mV	550
Frequency Responses (1 kHz = 0 dB)	100 Hz	0
	10 kHz	0
THD	%	0.1
Signal - Noise Ratio	dB	85
Channel Separation	L > R	60
	R > L	60
Effective Distance	m	>30