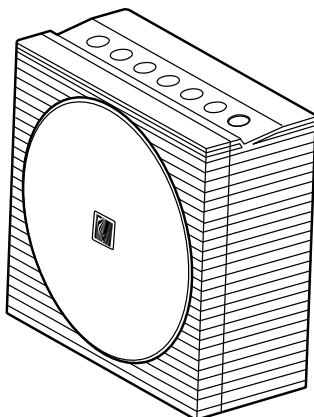


SOUNDFREQ[®]

Sound Spot

SFQ-07



 **Bluetooth[®]**

User Manual

CAUTION - Proper Installation

- Install the system in a place which is level, dry and neither too hot nor too cold. The appropriate temperature is between 5 oC and 35 oC.
- Install the system in a location with adequate ventilation to prevent internal heat from building up inside the unit.
- Leave sufficient distance between the system and TV.
- Keep the system away from TV to avoid interference with TV.

CAUTION - Proper Ventilation

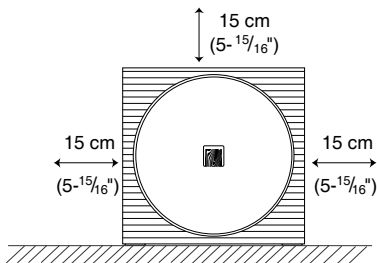
To avoid risk of electric shock and fire, and to prevent damage, locate the apparatus as follows:

Front: No obstructions and open spacing.

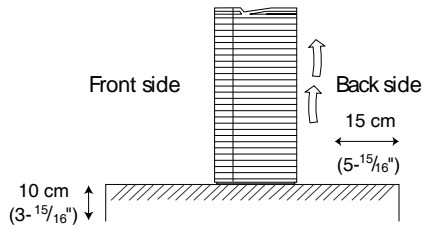
Sides / Top / Back: No obstructions should be placed in the areas shown by the dimensions below.

Bottom: Place on the level surface. Maintain an adequate air path for ventilation by placing on a stand with a height of 10 cm (3-15/16") or more.

Front View:



Side View:



Information for Users on Disposal of Old Equipment



[European Union]

This symbol indicates that the electrical and electronic equipment should not be disposed as general household waste at its end-of-life. Instead, the product should be handed over to the applicable collection point for the recycling in accordance with your national legislation.

Attention:
This symbol is only valid in the European Union.

By disposing of this product correctly, you will help to conserve natural resources and will help prevent potential negative effects on the environment and human health that could otherwise be caused by inappropriate waste handling of this product. For more information about collection point and recycling of this product, please contact your local municipal office, your household waste disposal service or the shop where you purchased the product. Penalties may be applicable for incorrect disposal of this waste, in accordance with national legislation.

[Other Countries outside the European Union]

If you wish to dispose of this product, please do so in accordance with applicable national legislation or other rules in your country for the treatment of old electrical and electronic equipment.

QDID: xxxxxxx

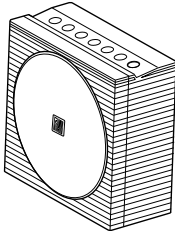
Contents

Getting Started	6
Package Contents	6
Charging the Built-in Battery	6
Checking Battery Capacity	7
System Overview	8
Front View	8
Rear View	9
Basic Operation	10
Turning on/off the System	10
Adjusting the Volume.....	10
Selecting a Sound Mode	10
Activating the Power Saving Mode	10
Selecting the Sound Source	11
Playing back via Bluetooth	12
Establishing a Bluetooth Connection	12
Using Multiple Bluetooth Devices.....	12
Playing back from Macbook or Macbook Pro.....	13
Playing back from PC/Notebook	13
Playing back from External Source	14
Outputting to other Audio System	15
Dual System Playback	16
Charging an External Device	17
Troubleshooting	18
Technical Specifications	19

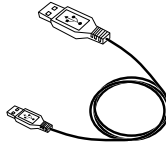
Getting Started

Package Contents

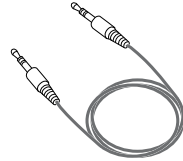
Examine whether the following package contents are all included:



Main Unit



USB Power Cable x 1

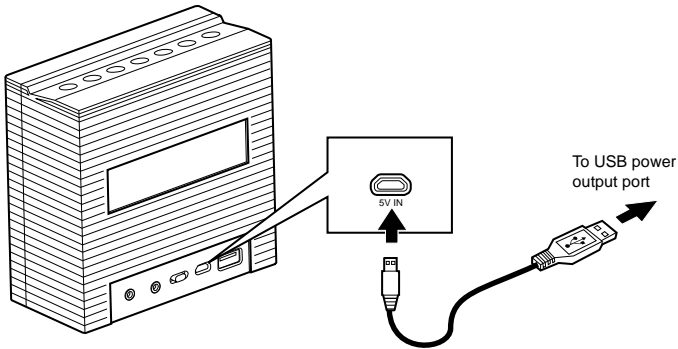



Aux Cable x 1

Charging the Built-in Battery

This system has a built in Lithium Ion battery to give you portable power.

To charge the system, connect the micro plug of the USB power cable to the **5V IN** jack of the system and the standard plug to USB power output port such as PC USB port. For optimal performance, use only the supplied USB power cable.



During charging, the charging LED indicator combination with the  button will indicate the charging status as follows:

System Mode	During Charging	Charging Complete
Standby	Blinks in green light at a slow rate.	Blinks in white light at a slow rate.
Power On but in idle mode	Blinks in green light.	Blinks in white light.
BT mode or AUX IN mode	Remains on in green light.	Remains on in white light.

If the LED indicator blinks alternately in white and green light at a fast rate after powering on, it means that the built-in battery power is low.

Notes:

- The battery cannot be replaced by the user.
- It takes about 3 hours to charge the battery from empty to full.
- Do not dispose of system in fire; battery may explode or leak.

Type: Li-Ion Battery
Model No: LC18650
Rated Voltage: 3.7V
Capacity: 2200mAh

WARNING!

There is a danger of explosion if the battery is incorrectly replaced. Replace it only with the same or equivalent type. Do not expose it to excessive heat such as sunshine, fire, etc.

Checking Battery Capacity

After powering on, tap and hold the **VOL+** and **VOL-** buttons together on the system to check the battery capacity by the LED indicator.

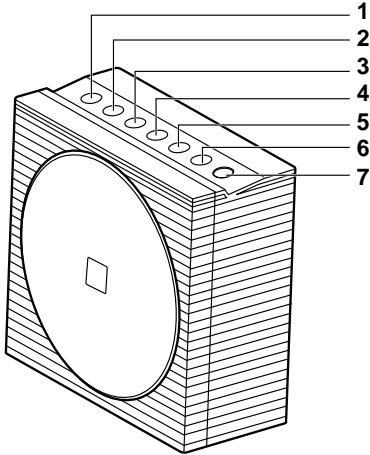
Status	Color	Capacity
Fast blinking (4 times)	Green	66%-100%
Fast blinking (3 times)	Green	36%-65%
Fast blinking (2 times)	Green	15%-35%
Alternatively blinking at a fast rate	Green/White	<15%

Note:

- If battery voltage low than 3.2V, the LED indicator will blink 10 times alternatively in white and green lights, and then the system will power off automatically.

System Overview

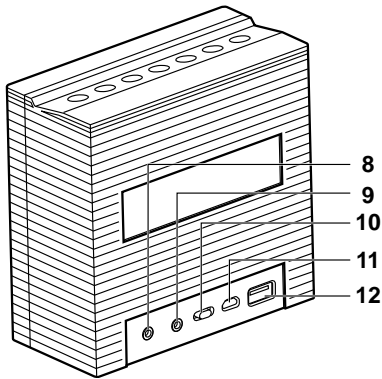
Front View



1. **VOL -** button
Tap to decrease the volume level.
2. **VOL +** button
Tap to increase the volume level.
3. **◀◀**(Previous/Rewind) button
In Bluetooth mode, tap to skip a previous track. Hold to rewind a track fast.
4. **▶▶**(Play/Pause) button
In Bluetooth mode, tap to play or pause a track.
5. **▶▶▶**(Next/fast forward) button
In Bluetooth mode, tap to skip a next track. Hold to fast-forward a track.
6. **PAIR** button
In Bluetooth mode, tap to put the system into pairing mode.
7. **⏻**(On/Standby) button and LED Indicator
Press to switch between standby and power-on modes.

 - Illuminates and indicates the battery charging state. (See **Charging the Built-in Battery** section)
 - When powering on, illuminates and blinks in white light, and blinks once when any button is tapped.
 - When powering on, indicates the pairing state.
 - When powering on, indicates the power capacity by holding **VOL+** and **VOL -** buttons at the same time. (See **Checking Battery Capacity** section)
 - When powering on, indicates the state of power saving mode by holding **PAIR** and the **▶▶** buttons at the same time.

Rear View



8. **AUX IN** jack

Inputs audio signals from an external device.

Establish dual system playback with another system (purchased separately) via AUX cable (Supplied).

9. **AUX OUT** jack

Outputs audio signals to an external device.

Establish dual system playback with another system (purchased separately) via AUX cable (Supplied).

10. **Sound Effect Switch**

Slide to switch among **FLAT**, **BRIGHT**, and **WARM** EQ settings.

11. **5V IN** jack


Charges the built-in battery of the system via USB power cable (supplied)

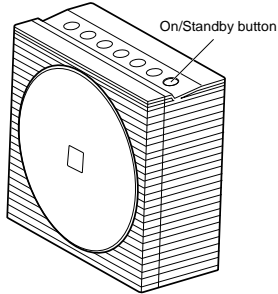
12. **USB 5V** jack


Charges your external USB devices.

Basic Operation

Turning on/off the System

Press the  button on the top to turn on the System.



Press the  button again to turn off the System.

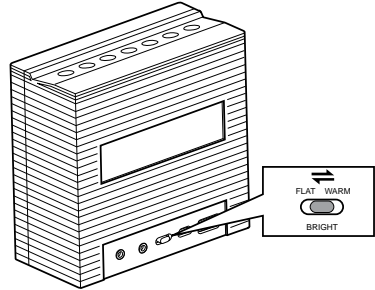
Adjusting the Volume

You can adjust the volume level when one of sound sources is selected by tapping the **VOL +/-** buttons.


Each time you tap **VOL +** or **VOL -** button, the LED indicator will blink once in white light. If the system is at minimum volume level (or at maximum volume level), then tap **VOL-** button (or **VOL+** button), the LED indicator will keep its status as before without any action.


Selecting a Sound Mode

Sound modes can be selected to enhance the type of music being played. You can select one sound mode of **FLAT**, **BRIGHT**, and **WARM** by sliding the **Sound Effect Switch** on the back of the system.



Activating the Power Saving Mode

Tap and hold **PAIR** button and the  button together to disable the Power Saving mode. The LED indicator will blink twice in green light to indicate Power Saving mode is off. The system will keep on all the time.

Tap and hold **PAIR** button and the  button together again to enable the Power Saving mode. The LED indicator will blink once in green light to indicate the Power Saving mode is activated. The system will power off automatically when the system is idle for 45 minutes.

Note:

- If you turn off the system manually, the system will activate the Power Saving mode automatically next time even if you disabled it before.

Selecting the Sound Source


This system enables you to access two sound sources – **AUX IN** and **Bluetooth**.

- If **AUX IN** jack has been inserted, the sound source will switch to **AUX IN** mode automatically. Remove the AUX cable from the **AUX IN** jack, the sound source will switch to **Bluetooth** mode automatically.
- When a Bluetooth connection has been established and the system is in **Bluetooth** mode, once you insert AUX cable, the system will suspend the Bluetooth playback and switch to **AUX IN** mode automatically. To resume the Bluetooth playback, you need to remove the AUX cable from the **AUX IN** jack, and tap the **▶||** button.

Playing back via Bluetooth

Establishing a Bluetooth Connection

Notes:

- Before establishing the Bluetooth connection, make sure the **AUX IN** jack is not inserted by AUX cable.
 - If your mobile phone supports A2DP, AVRCP profiles, its music will play through the system.
 - You can make a Bluetooth connection with a mobile phone, an iPhone/iPad/iPod touch or any other Bluetooth-enabled devices.
1. Press the  button to power on the system.
 - The LED indicator on top panel illuminates and blinks in white light.
 2. Tap **PAIR** button on top of system to put in pairing mode.
 - The indicator starts blinking at a fast rate.
 - If you hold the **PAIR** button for more than 2 seconds during the process of pairing, the operation will be cancelled.
 3. During this period, you can operate the mobile phone, iPad or Bluetooth-enabled device to pair with the system within a 33 feet (10m) range.
 - Please check the user manual of the iPad or Bluetooth-enabled device with which you are initiating pair to learn about Bluetooth connection with any other devices.
 4. Once the system is detected and its name **Sound Spot** appears on the display of your Bluetooth-enabled device, key in the default password **1234** if a prompt requests it.
 - The LED indicator on top panel starts blinking quickly to indicate that the system and your device have entered into the connection mode.

- After a Bluetooth connection is established successfully, the LED indicator will remain on in white light.
5. Select the desired music and press **Play** button on your device. The system automatically starts playing back the music.
 - Try again above steps 2 to 4 if the pair indicator turns solid after blinking for 3 minutes, the pair was unsuccessful.

Using Multiple Bluetooth Devices

Only one device can be used at a time, but you can switch between different Bluetooth devices.

Make sure each device you want to use has already been paired, to switch devices:

1. On Sound Spot, tap **PAIR** button.
2. On Bluetooth device, select the connection to Sound Spot.

This device is now the connected device to Sound Spot, (the previous connected device is now disconnected). Repeat those steps to switch the connected device again.

Notes:

- If the system has no sound output, please check if the volume level of your Bluetooth device connected to the system is set to the minimum, or the Bluetooth device is muted.
- Ensure that the audio cable has been removed from the **AUX IN** jack.

Playing back from Macbook or Macbook Pro

1. In the desktop screen, select the **Open Bluetooth Preference**.
2. If there is any old **Sound Spot** records, remove them. Click the **Continue** button to continue pairing process.
3. Once completed, the pairing success screen will come out.

Note:

- Don't quit the page immediately. You may notice that the previous dialog screen still shows the device not connected. Just ignore it. It's confusing to the user. In fact, it's connected already.
4. Open iTunes, play a song. Then use the mouse to click the Bluetooth icon at the top right hand corner of the desktop screen, select the **Sound Spot** option and then select the **Use as Audio Device (Stereo)**. After a while (a few seconds), the music will come out from the SFQ-07 system. If not, select the **Use as Audio Device (Stereo)** once again. The Sound Quality should be good.

Playing back from PC/Notebook

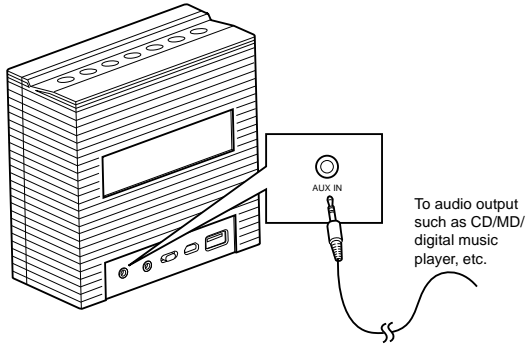
1. Press the **Start** button to open the **Device and Printers** dialog box.
2. Turn on the SFQ-07 system and tap the **PAIR** button on the system to put into the pair mode.
3. Select the **Add a device** in the **Device and Printer** dialog box. The **Sound Spot** icon will appear on the display.
4. Double click the **Sound Spot** icon and wait until the device has been added successfully.
5. Click the **Close** button to close the **Device and Printer** dialog box. A **Sound Spot** icon appears in the dialog box.

6. Double click the **Sound Spot** icon and the device connection screen will be shown.
7. Click the **Connect** button in the **Music and Audio** option.
8. Once connected, the LED indicator on the system will be solid on and the connection success screen will be shown.

Playing back from External Source

You can enjoy the sound from an optional component such as a digital music player through the speakers of this system. Be sure to turn off the power of each component before making any connections. For details, refer to the instruction manual of the component to be connected.

Connect an external device to the **AUX IN** jack on the back panel of the system using a stereo audio cable (supplied).



Note:

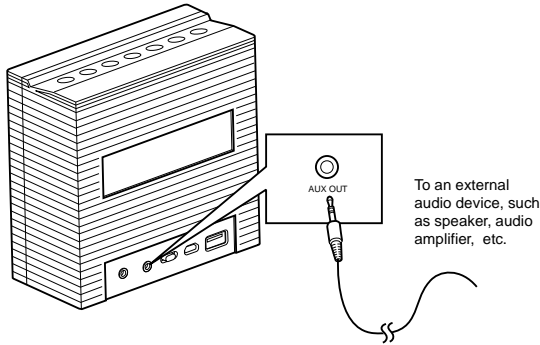
- When the stereo audio cable is connected to the **AUX IN** jack, the system will switch to the **AUX IN** mode automatically.
1. Turn the system power on.
 2. Set the volume to the minimum position.
 3. Start playback on the external device.
 4. Adjust the volume to meet your listening requirement.

Outputting to other Audio System

This system has **AUX OUT** jack allowing you to connect to auxiliary audio systems such as speaker, audio amplifier and perhaps wireless audio transmitter.

Be sure to turn off the power of each component before making any connections. For details, refer to the instruction manual of the component to be connected.

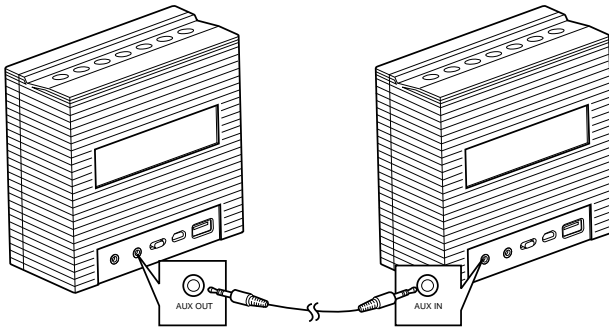
Connect **AUX OUT** jack on the back panel of the system to an external device using a stereo audio cable (supplied).



Dual System Playback

Two Sound Spot systems can be connected together via the supplied AUX cable, and they will play as one speaker system with left and right audio split between each for true stereo separation. For obtaining the stereo sound effect, you should purchase another Sound Spot system separately.

Before establishing the dual system playback, be sure to turn off the power of each system. Connect the **AUX OUT** jack of one system to **AUX IN** jack of another system using the supplied AUX cable.



The Sound Spot that you connect **AUX OUT** jack will be designated as the master system; and at the same time, another Sound Spot that you connect **AUX IN** jack will be designated as the slave system.

- When the master system is in **Bluetooth** mode, the left channel and right channel are mixed, so the slave system will play only in a mono channel.
- When the master system is in **AUX IN** mode with **AUX IN** jack inserted with external source, after connecting to the slave system, the master system will be designated as **L** channel and the slave system will be designated as **R** channel. Now you can enjoy stereo sound effect using these two systems.

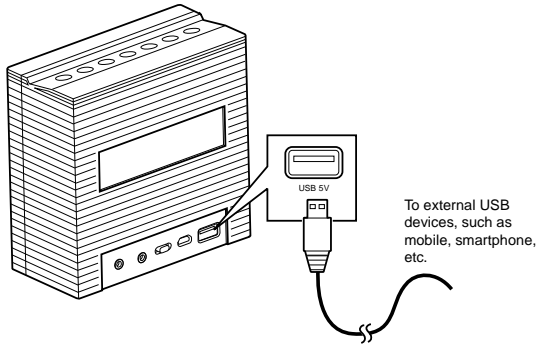
Note:

- During dual system playback operations, you need to adjust the Volume level by tapping **VOL +/ VOL -** buttons on each system separately.

Charging an External Device

The **USB 5V** jack can be used to charge most devices that allow for USB charging (including many mobile phones, smart phones and wireless headsets).

1. Connect one end of USB power cord to **USB 5V** jack of the system, and the other end to your USB device.
2. Turn on the system to start charging the connected USB device.



Note:

- Please use the USB power cord that came with your device to connect to Sound Spot to charge.

To preserve Sound Spot's battery life, external device charging is disabled when running on battery power at high volumes.

Notes:

- We suggest when using the **USB 5V** jack to charge external mobile devices, the system's battery should be fully charged.
- If the charging current of the **USB 5V** jack exceeds 0.5A, the charging function will be unavailable.

Troubleshooting

Check this list for a possible troubleshooting solution before calling for service.

In These Cases	Check the Following Points
Power does not come on.	<ul style="list-style-type: none"> The built-in lithium battery is no power. Charge the battery.
No sound output.	<ul style="list-style-type: none"> Check if the volume level is set to the minimum. Check if the volume level of your Bluetooth device connected to the system is set to the minimum. Check to make sure your Bluetooth device is not muted. Check if your stereo audio cable is connected to the AUX IN jack of the system. Unplug the cable.
The system is powered off automatically.	<ul style="list-style-type: none"> The system enters the saving energy mode. The system does not connect with any audio source for more than 45 minutes. Turn on the system again and play back an audio source. The internal battery is exhausted. First, the LED indicator on the top panel of the system starts blinking ten times; then the system is powered off. Charge the battery and turn on the system again.
No sound output is via Bluetooth or Bluetooth connection cannot be restored automatically.	<ul style="list-style-type: none"> The system may be powered off and powered on when playing back a track over Bluetooth connection. You need to make the connection again. Check if your stereo audio cable is connected to the AUX IN jack of the system. Unplug the cable.
If you find USB charging cannot perform after connecting your device to the USB 5V jack on the system.	<ul style="list-style-type: none"> Maybe your USB cable is not supported by the system, please try to use another USB cable. If the volume setting is higher than the threshold value, the USB 5V jack power will be off. If the charging current exceeds 0.5A, the charging function will be unavailable.
Bluetooth connection cannot be established.	<ul style="list-style-type: none"> When making a Bluetooth connection between the system and your device for the first time, if the connection is fail, you need to power off your device and power on again to clear the device name, and make the connection again.

Technical Specifications

Model	SFQ-07	
Type	Sound Spot	
Support Bluetooth	Bluetooth 1.2, 2.0 and 2.1 complaint	
Support Profile	A2DP, AVRCP	
Input Sensitivity	AUX Input	0.3-0.5V (1.2V max)
Input Terminal	External USB IN (for charging the battery), AUX IN	
Power Source	DC 5V (External USB IN)	
Dimensions (Approx.)	133mm (L) x 60.5mm (D) x 128mm (H)	
Weight	0.49kg	

Design and specifications are subject to change without notice.

Save this manual