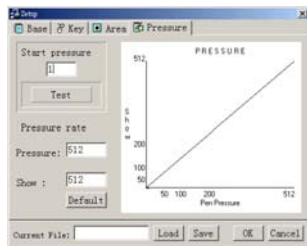
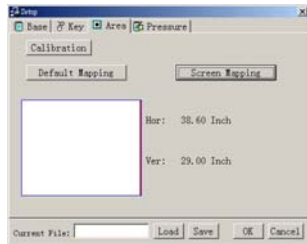


Area : Controllable area of the IT-Board
To understand how big the controllable area of the Board.

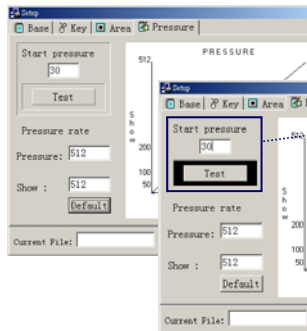
Calibration : align cursor with pen
Default Mapping : Maximum controllable area

Screen Mapping : modify area with regular 4:3 screen.

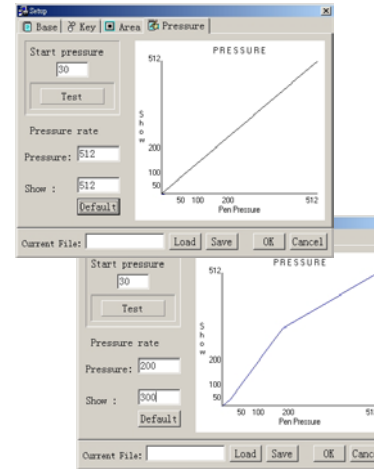
In some cases, the controllable area are not 4:3, click the **“Screen Mapping”** to adjust it.



Pressure : Pen pressure setting
Start pressure : Initialize setting
Pressure rate : Pressure change rates

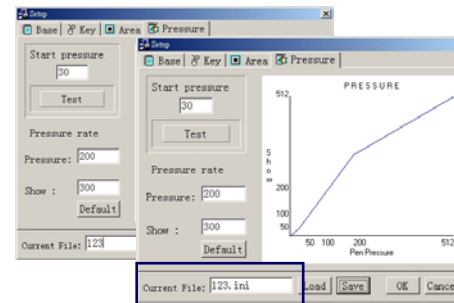


You are able to personalize this setting according to your custom. When **“Start Pressure”** is set, you test it with test button. When the pressure reach the value you set, a black rectangular shape will surround the button. Preset value is 1.
Note: Preset value cannot exceed 150



When in use, pen pressure value are from 1 to 512. The driver are able to reflect this. All you have to do is preset the value. In **“Show”** setting to see how actual pressure are set. The diagram indicate the change after setting.

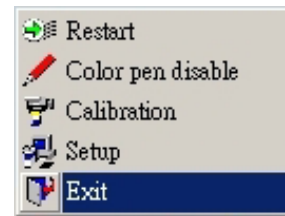
e.g. Pressure value = 200 · Show = 300 · means the pen top can accept change between 1~200, but it actually indicate that there are 1~300. One set value means 1.5 actual value



Default : Set both pressure and show value back to default value

After setting, put a file name into the column of current file. Then save it, it will be save in *.ini format, locate in C:\IT-BOARD. Plus a path file Max Wining. If you want to erase any personal setting, you must delete them both.

Note: Only English characters and digits are acceptable.



Exit : Close the program

••• Calibration:

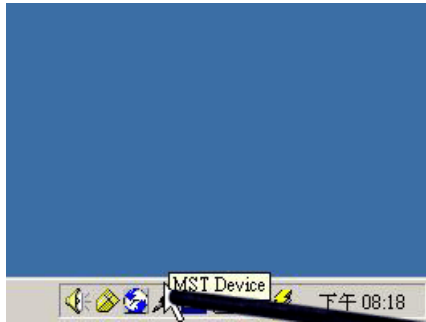


Fig 1



Fig 2

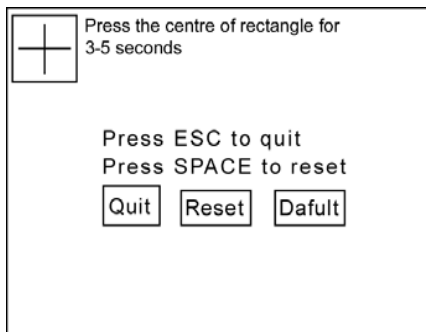


Fig 3

Before use stick or pen, you must align cursor and pen top by calibration. Right Click the icon to open function and click on calibration (fig 1, fig 2), Point the stick top on middle of the cross and press first button of the stick (fig 3). Then you are able to use stick/pen as a mouse.

9.2 The Annotate program



Here is a note writing application within New Quick called Annotate. Click the icon to start the Annotate.



The following icon will appear after you start the Annotate.

••• Annotate Explained:



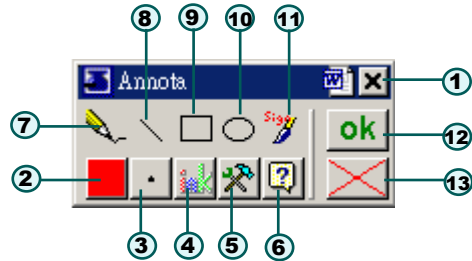
It is a note making program, for all the applications which is able to enter the graphs. Annotate is able to create the notes you desire. Beside of other drawing functions, Annotate is able to simulate the paintbrush and make the word rainbow-like

It also able to send the notes you created into your e-mail applications such as Outlook express, Outlook, Netscape Messenger and Eudora.

This is a wrang word!

Annotate is compatible with MS Office series (Word, Excel, PowerPoint) for creating notes and annotations: The notes you create is located exactly on the top of the word you wish to explain. It is easy for writer to decide whether make note appear, or just delete them. For example, after someone modify a document, he is able to circle where it should modify with Annotate and hand it to another person, after another person fix all the parts, he is able to delete the notes. Which make job easier.

Buttons explained



- 1 close Annota
- 2 color of the pen
- 3 Thickness
- 4 Hide all the notes.
- 5 Option
- 6 Help
- 7 Pencil
- 8 Draw a lone
- 9 Draw a squire
- 10 Draw a circle
- 11 Sing mature mode
- 12 load
- 13 Delete

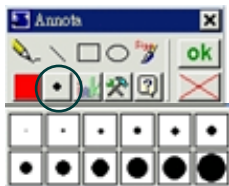
Button functions



click 2 and choose color from the list



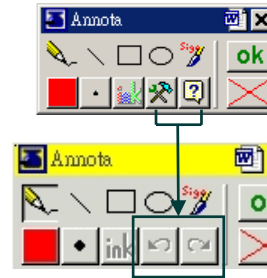
click 7 and do the writing/drawing



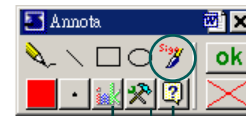
click 3 and select the size of pen



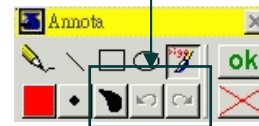
click 8 9 10 and you will be able to draw straight line, round shape, or square. You may fill the round/square by press stick/pen button for two second.



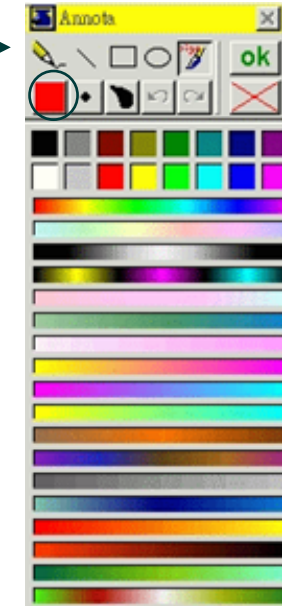
Click 7 8 9 10 11 the 5 6 will change into "recover" and "back" you may use it when you make mistakes during editing (you may repeat many times as long as you are not saving it).



click 11 toolbar will change like this:



Click 11 special pen will be available: paintbrush, you may also use multi-layer/color feature.



Click this button to erase everything you have draw/write.

Operation

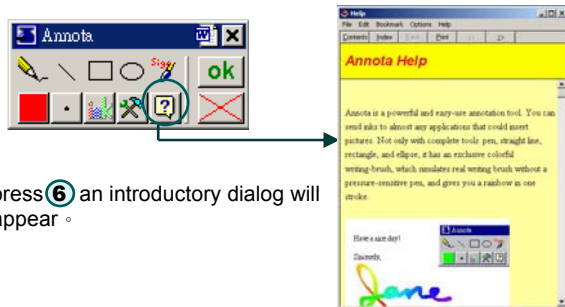
31

The Annotate program

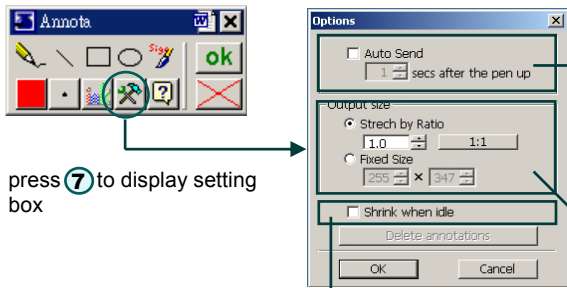
Operation

32

The Annotate program



press ⑥ an introductory dialog will appear.



press ⑦ to display setting box

Auto : after check this box, whatever you have done by the Annota will be automatically save.

Zoom: The handwriting graph will be adjust to the size you set while saving file/graph.

Stable Size : The size of your writing/drawing will not change while saving file

Check this box so the toolbar will be minimize after a period of time.



⑫ Click this button to confirm whatever you have wrote/draw.

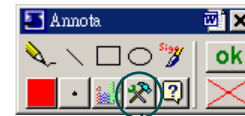


Fig 1

In case of delete all annotation, please press this button ⑤ to display this dialog box. A button "Delete all annotation within this document" will appear. Click it to delete all annotation.

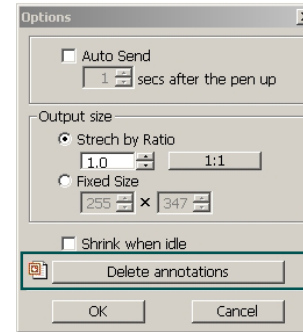


Fig 2

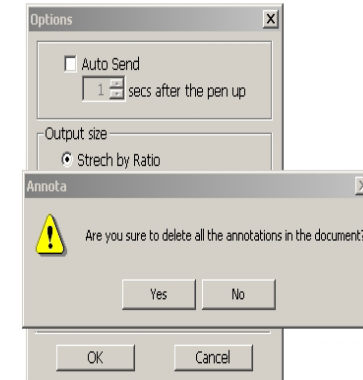


Fig 3

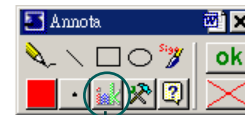


Fig 4

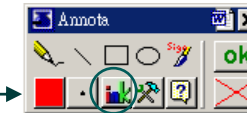


Fig 5

Annota toolbox ④ (above) may be used after you have save annotation. **operate** : click edit then press ④ to hide annotations on the text , and ④ button will change color to fig 5. Press ④ the annotation will re-appear. (see fig. 6 and fig. 7 to see actual operation.)



Fig 6

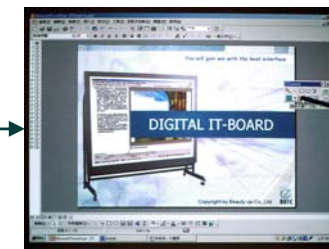


Fig 7

Operation

33

The Annotate program

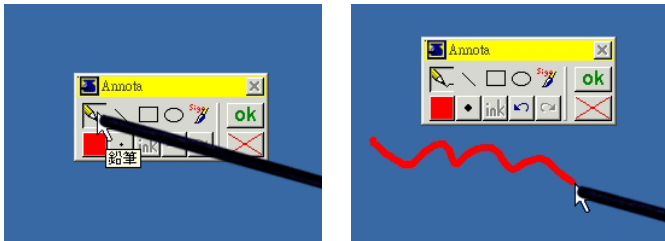
Operation

34

The Annotate program

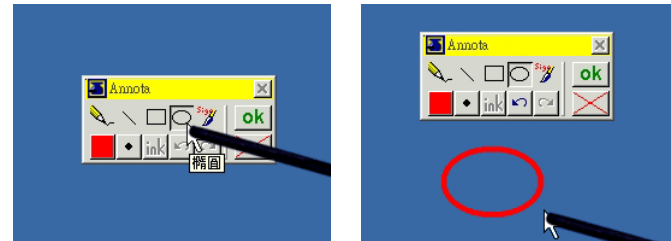
Actual Operation

1



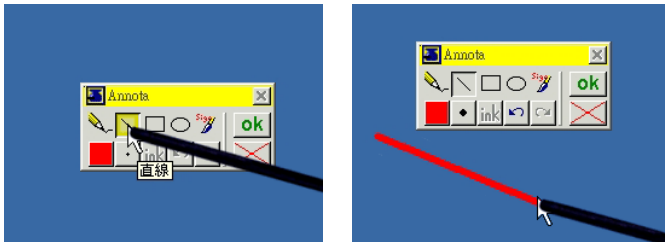
Click this button so you will be able to draw lines.

4



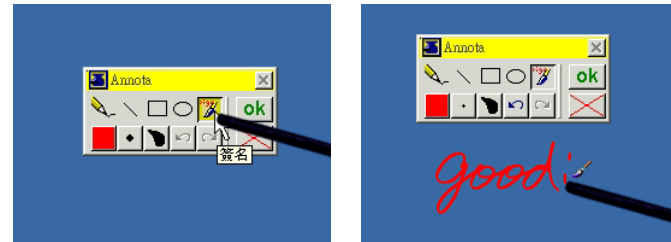
Click this box to draw circle

2



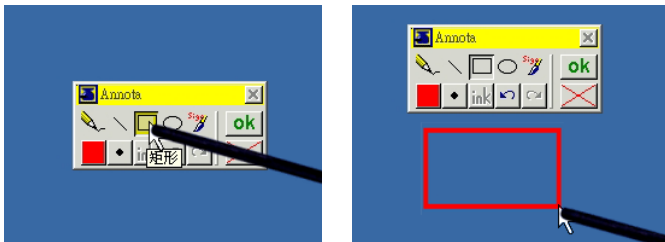
Click this button for drawing straight line.

5



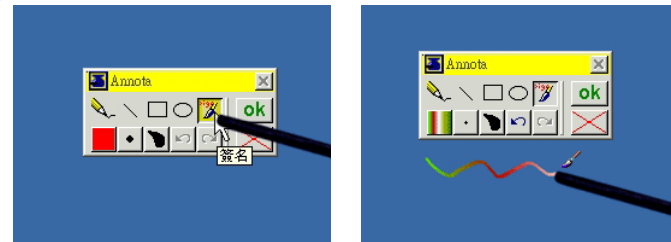
Click this button to draw/write with different style.

3



Click this button to draw rectangle box.

6

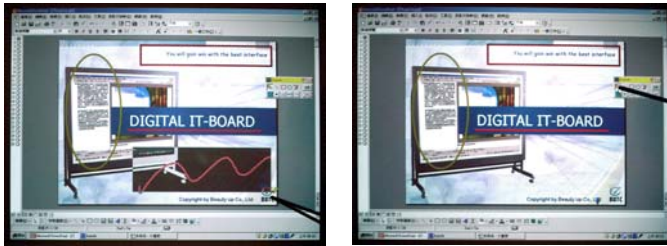


Click this box to draw/write with different color.

How to use
35 Annota

How to use
36 Annota

7



Eraser : You are able to use eraser to clear part of the annotation instead of clear them all.
How : Click middle button to circle the part you wish to delete, then release it. Only the part you circled will be deleted.
Noted : Middle button of Interactive Touch pen may lack of eraser function due to personal setting problem. Please refer to P18-20 . To restore it.

Operation

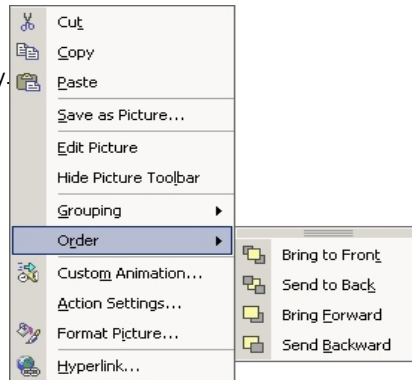
37

The Annotate program

Change display level

- Step1. Click the one you wish to modify.
- Step2. Click the item sequence within Drawing menu
- Step3. Or right click the mouse button On the object to display this option.

note : The annotation is similar to Graph which insert to the document, Edit it the same way you edit the graph.



Special Function

- [Shift key] + 8 =Drawing straight line
- [Shift key] + 9 =Drawing square.
- [Shift key] + 10 = drawing round shape
- [Ctrl key] + 8 = drawing line with arrowhead.

Applications supported by Annotate

O : Send notes into the software.
 P : Able to put notes in precise position

Software	Support
Word Pad	O
Ms Paint	O
Word 95	O
Excel 95	O
Power Point 95	O
Word 97	OP
Excel 97	OP
Power Point 97	OP
Word 2000	OP
Excel 2000	OP
Power Point 2000	OP
AmiPro / Word Pro	O
Star Office	O
Outlook Express	O
Outlook	O
Netscape Messenger	O
Eudora	O
AOL Mail	O

Operation

38

The Annotate program

9.3 Handwriting recognition

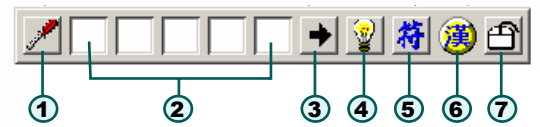
9.3.1 How to start it



Click the following icon to start handwriting recognition

9.3.2 Handwriting recognition explained

The following will appear after click :



- ① Main
- ④ Study
- ⑦ Mouse / Pen change
- ② Possible word
- ⑤ Symbol

Since the system is preset on mouse status, you may use "mouse/pen change" or use F11key to switch pen or mouse , if you don't like F11, change it on system setting.

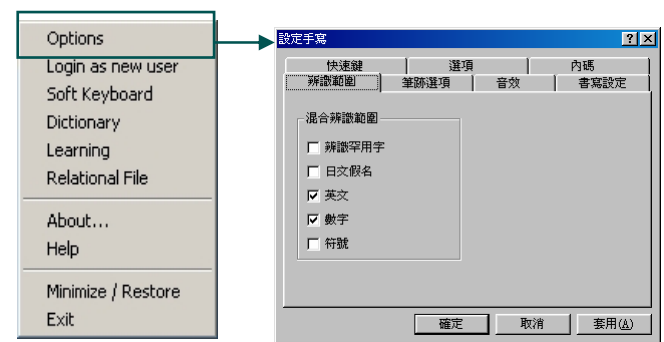
- ① **Setting** : Enter the system settings screen
- ② **Possible word** : The word program recognize is appeared by the cursor, and the possible word is appearing on these squires. If you click one of the squire , system will change to this world.
Noted: User is able to change words by click ③

- ③ **flip page** : If there are more possible words, click this
- ④ **Study** : (refer to help menu)
- ⑤ **Symbols** : Click the symbols to select the symbol you like.
- ⑥ **ID Status** : In Mandarin (Include traditional Chinese 、 Simplified Chinese and HK specify words) 、 English 、 numbers 、 Japanese.
- ⑦ **Mouse/pen Change** : If it is in mouse, the long pen is able to replace the mouse



9.3.3 System Setting

System Setting : The setting includes the following

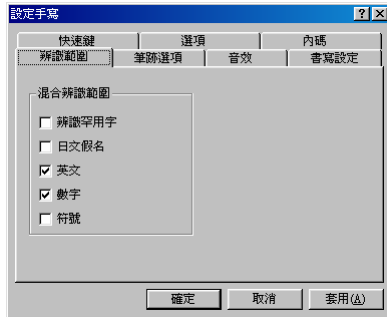


系統設定提供手寫各種輔助功能，同時可設定系統的狀態與參數。點選設定鈕的畫面右圖

Operation
Handwriting recognition

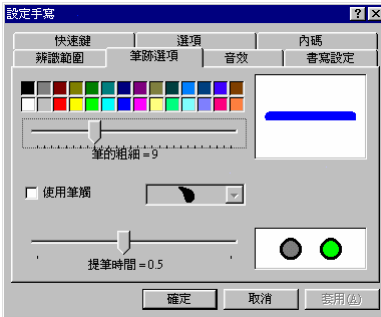
Operation
Handwriting recognition

System Setting:



1. Hardly use words: If check here, the program is able to ID 13060 characters, if unchecked, 7000 characters is all it can recognize. (with common 5401 characters and some sub common words)
2. Mixed ID ranges
 Japanese: Able to ID Japanese Characters.
 English: All English characters included.
 Numbers: Able to ID numbers.
 Symbols : Able to ID Symbols on computer keyboard.

Handwriting Options



1. Thickness : There are 28 different thickness for select.
2. Color : Support color options.
3. Stop time : After stop writing, the System will start ID hand writing (0.1 : Fastest 1.0 : Slowest) Press OK to change the setting.

Hotkey



Switch Hotkey for pen/mouse switching it is preset on F11.

Advanced Setting



1. ENG/Math/symle to Full size : check it and the output will be in fill size.
2. Insert space : If checked the program will insert space into every characters you input : unchecked, there is no space between character.
3. English men : If you are using Mandarin applications under English Version of MS Windows, please check it.
4. English Messages : Menu will appearing in English.
5. Invisible IME : Check to start Invisible Input. (Ref. to Invisible Input Sec.)
6. Start word inquiry : Start word inquiry function , so users is able to inquiry word usage invisible IME. Invisible IME must be checked.

Sound



Sound: Here are four option writing sounds.

Writing Setting



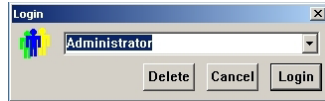
1. Auto switch words : Click it and system will send the writing directly to application.
2. Character size: Maximum , ..., minimums, system will adjust the word size automatically. (Bigger the word, bigger the Surrounding).

Internal code



1. BIG5 : BIG5 based OS.
2. GB : GB based OS.
3. GBK : GBK based OS.
4. Unicode : Unicode based OS. (Such as WIN XP).

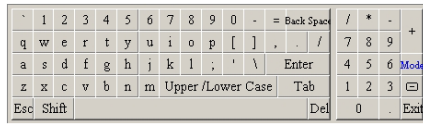
Change User



Personalized the hand writing recognition by resisted users and his habit, different user will have different learning file, word file and system setting.

User Register : Change users and personalized setting.

Software Keyboard



Click English alphabets or numbers or symbols.



Operation

43

Statistic

Save document into personal file, and count the word statistic, system, will create personalized word databank.

Learning

(Ref. to Learning Section)

Dictionary

(Ref. to Dictionary Section)

About

Related commercialized message

Help

Click here for detailed explained operational menu

Shrink/Back

Shrink the Handwriting toolbar to start menu, only mouse function is available.

Close

Close the Handwriting Recognition system.

Handwriting recognition

9.3.4 Invisible IME

This is the special program only available for Fast Hand. Not only improve convenience but also save display space.

How to

Move cursor to any character of edit field , a list of related words will appear.

Function

- 1 Move cursor above any characters, the related functional menu will appear For example: “手寫中文”, move cursor above the character “中” following screen will appear.



- 2 Move cursor to the square, a series of related words and functions appear.

- 3 Change page , move to next page if there are too many word.

- 4 前 List the words/characters begin with the word on its right in order to change this word.

- 5 後 List the words/characters finish with the word on its left in order to change this word.

- 6 同 List the word with same pronunciation

- 7 符 Common Symbol

- 8 Move cursor to an email address or web address to start browser. (or send email)

- 9 Delete the word

- 10 查 Dictionary. Mandarin : Translate this word into English or Chinese explanation. English : Show Chinese translation.

Operation

44

Handwriting recognition


9.3.5 Learning

Learning Function

When you have any one of the following, it's time for learning function :

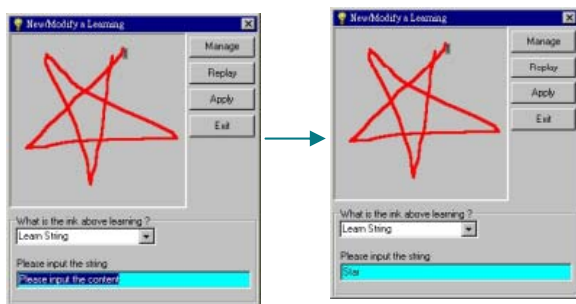
- ① Writing recognition error, and hope computer to learn your special writing character.
- ② Create a symbol/character which computer font does not provide.
- ③ Use a self-appointed symbol to represent a control button such as Page Up \ End \ Alt+F4

Operate

Input the character, press ( Learning) function, System will show this word and show its printed character, you may use hand-writing to input and press (apply) to complete learning process.

1 Learning words : Learning one or more characters combine

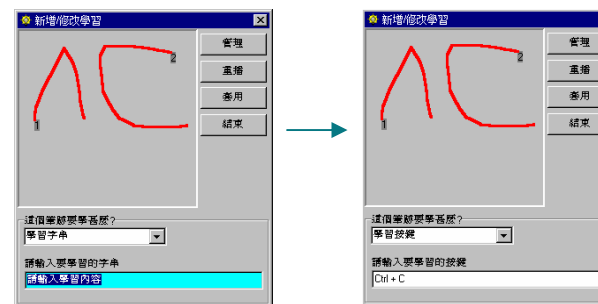
- Step1** Write down self appointed character then click learning
- Step2** Select "lean string ", then input the word (s) you wish it represent into the Edit box
- Step3** Click (Apply) to save word.
- Step4** If you have voice file, then , when you draw this symbol , system will pronounce this word.



2 Learning about buttons : These keyboard buttons , F1~F12, A~Z, Ctrl + "A~Z" Alt + "A~Z", Insert, Home Page Up End Page Down , ←, ↑, →, ↓ , etc. users may enable writing to replace these buttons.

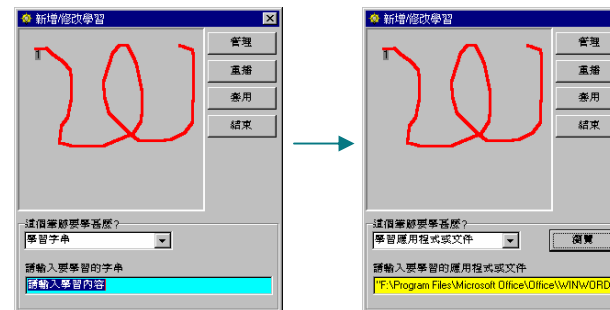
e.g. : Press "Ctrl +C" enable copy under the MS Word, now learn how to use written symbol to enable "Ctrl +C" .

- Step1** Write the symbol down, then click (Learning) .
- Step2** Select "learn key stroke", then type the way you wish it to learn such as "Ctrl +C"



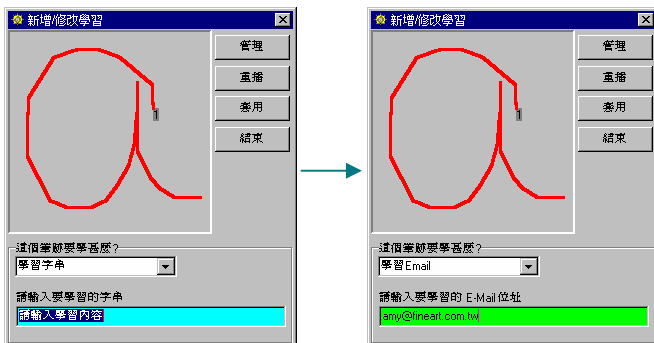
3 Applications or documents : To open applications or documents.

- Step1** Write the symbol and press [Learning]
- Step2** Choose the application/document you wish it represent, then enter its path on the bottom of the window.



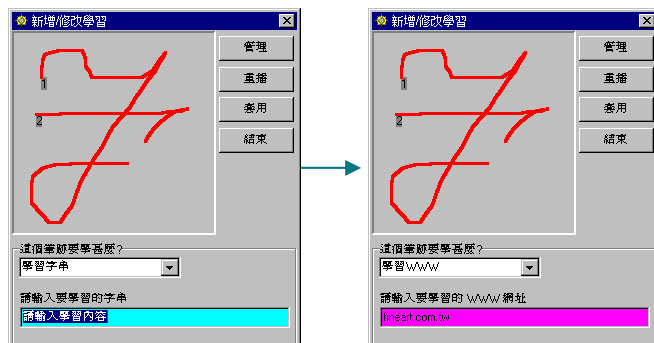
4 Send Email :Able to send e-mail to a specify person by write a symbol

- Step1**— Write the symbol down and click [Learning]
- Step2**— Choose send email and input the email address.



5 WWW : Enable a symbol represent one web page

- Step1**— Write the symbol down and click [Learning]
- Step2**— Choose WWW and input the web address Press [apply].



6 Other function keys

- 1**— Manage : Brows the learned characters and its contents, or replay the learned characters,
- 2**— Modify : Modify the learned characters.
- 3**— Page up/page down to Selecta pages
- 4**— Delete : Delete the learned character
- 5**— Recover : Recover what has been deleted.
- 6**— Advanced : Enter the manage function, delete the learned character by previous user.
- 7**—Exit : close the learning function

Operation

47

Handwriting recognition

Operation

48

Handwriting recognition

9.3.6 New Fast Hand Explained



New Quick is a series of toolbar ; it is able to store several applications for convenience.

Users is able to drag the Fast Hand toolbar to any location on the screen ; it may also be hide by press hiding function, until you what to use it.

New Quick look like this :



Press the icon on the list to start any one of these applications

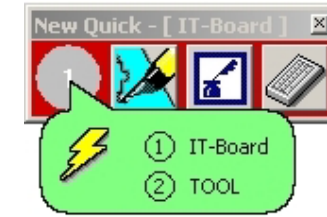
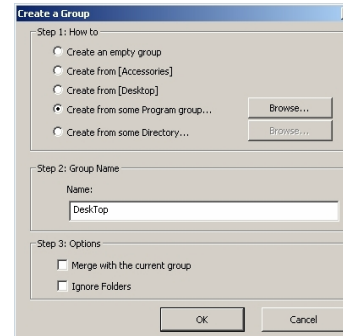
X : minimize New Fast Hand, after minimize, the only symbol will be like this.  , press  and choose New Quick to make it appear.
Menu of the fast hand :


Click  on the down right corner to display this:



You may click any function you desire or choose new quick to display the new quick.

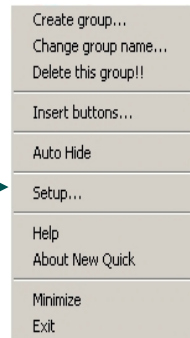
However, if you want to exit from it, you have to go back to this screen and click quit to quit from the new quick.



1 Right click this  a series function will appear.

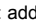


Right Click



New Quick offer a series of functions For you to customized your application.

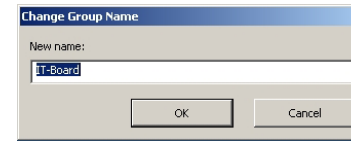
2 Add button : Add button on current group or modify its contents.

- Step1** Add Method
- Blank group : add a group which contain nothing, you may press  to put applications into this group.
 - Add Sub Apps : Add application into Sub apps. Group
 - Add desktop Apps : Add applications already appear on the desktop
 - Add certain group: Add applications within start menu
 - Add anything : add any directory as a group

Step2 Group Name input

Step3 Option:
 Combine with current : combine with current group
 Ignore directory : do not add directory into group

3 Rename : change name of group

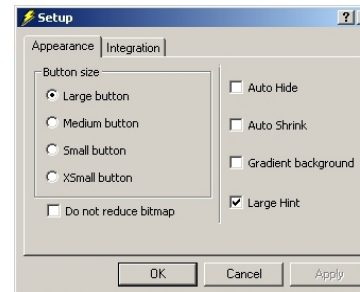


4 Switch group : switch from one to another group

5 Add button : Add button on current group or modify its contents

6 Auto-hide : Set the group into auto hiding mode

7 System setting : Set how new quick display on the screen



1. Appearance : Change appearance of fast hand button size
- Auto Shrink disable
 - Auto hide
 - Auto Shrinking
 - Laved color : Change color of new quick into laved color

Operation

49

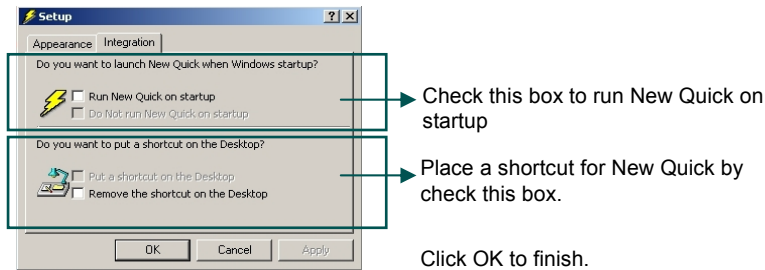
Handwriting recognition

Operation

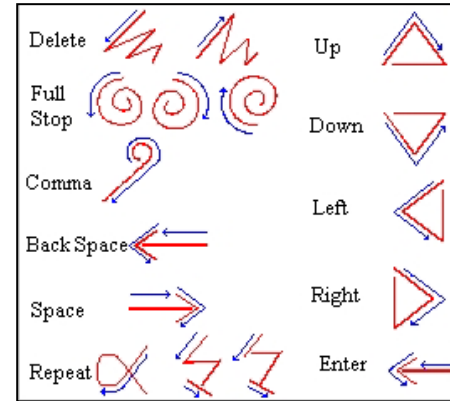
50

Handwriting recognition

Integrated with Window : Relation between fast hand and Windows



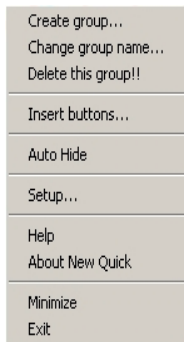
9.3.7 Sign Language



Since not all the functions on the keyboard have a sign thus , here we support series of function , which represent by sign language.

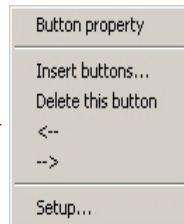
Operation

- 8 Help: Menu of new quick
- 9 About :Commercial Information
- 10 Minimize: Minimize the New Quick
- 11 Close



51

Handwriting recognition



Right click above button to open function.

- Contents : Change what is inside the button
- Add : Add button to current group
- Delete : delete a button
- ←: Shift button to left
- : Shift button to the right
- System setting : set how fast hand display

9.3.8 Uninstall

Reason :
In case of new and improved version appear , you may wish to uninstall this one or upgrade to new one.



- If you are certain that you wish to uninstall it , press "Start Uninstall", or press "Cancel".
After Uninstall
1. Remove related setting .
 2. Delete groups and icon/buttons
 3. Delete directory of the application.

Operation

52

Handwriting recognition

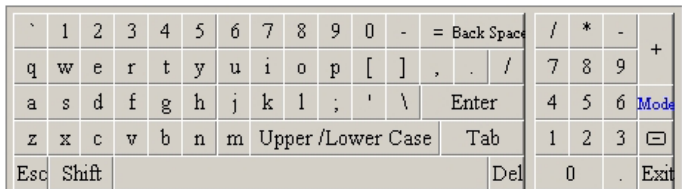
9.4

Onscreen Keyboard

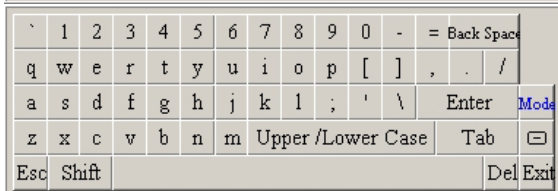


Onscreen Keyboard

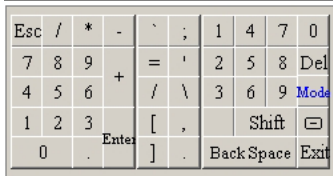
There are four modes in Onscreen Keyboard, the one here is default:



Mode 1

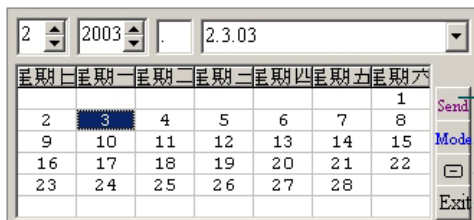


Mode 2



Mode 3

Mode 1、mode 2、mode 3
Function key explained:
Upper/Lower Case: switch between capitalized letter and small letter.
Shift: switch to symbols
Mode: switch between modes.
☐ :Minimize
☐ :Maximize
Exit: terminate the application



Mode 4

Send the date here directly to the document

The rest are as the same as mode1, 2, 3.

Operation

53

Onscreen Keyboard

Frequently Asked Questions

1 The position my long pen pointed is not where the cursor is ?

Please execute the Fix projector position application.

2 The long pen is not sensing correctly ?

Please change the battery, if problem persist, call the agent.



3 The long pen is not moving the cursor ?

Beside of change battery, please also examine if the RS-232 connector is loose.

4 May I use common pen draw on the board ?

We do not suggest you to use common pen but if it is really necessary, please clean the board right after you wrote.

5 Will cellular or other electromagnetic wave emitter devices affect the board ?

They might cause sensing problem between long pen and board.

6 I cannot write or draw line while running Annota ?

This normally occurred after running NetMeeting, please restart Annota

7 A error message occurred while I tried to run functions on the driver ?

This occurred due to some other applications occupied the memory, exit and restart the driver.

Frequently Asked Questions

54

Appendix A: Accessories of (Wall Type)

IT-Board

- 1 RS-232
- 2 AC/DC Adaptor
- 3 Hanger board
- 4 Pen Stand
- 5 Driver CD-ROM
- 6 USB Connector
- 7 Interactive Touch Pen/Stick
- 8 X 3
X 22
X 8
- 10 Touch Tablet
- 9 Wireless Transceiver, Wireless Receiver
- 11 adjutant stator

Appendix A: Accessories of (Wall Type)

Appendix B: Accessories of (Moveable Type)

- 1 RS-232
- 2 AC/DC Adaptor
- 3 Pen Stand
- 4 Moving Frame and Hook
- 5 Driver CD-ROM
- 6 USB Connector
- 7 Interactive Touch Pen/Stick
- 8 X 1
X 12
X 24
- 9 Wireless Transceiver, Wireless Receiver
- 10 Touch Tablet

Appendix B: Accessories of (Moveable Type)