

Confidential

# A. GENERAL SPECIFICATION

## 1 SPECIFICATIONS

- ◆ One channel, 4095ID
- ◆ Cordless Technology: Radio frequency
- ◆ Frequency: Keyboard 49.865MHz  
Mouse 49.845MHz
- ◆ Cable: USB connector
- ◆ Cable Length: 1800mm

## 2 KEYBOARD

- ◆ Effective distance: 49MHz: 3M ± 0.2M
- ◆ Battery life: ≒ 7.5 months (4hrs/day)
- ◆ Input power: 3Vdc (2 x AA alkaline)
- ◆ Rated output power level (Max): -16dbm
- ◆ Switch activation mechanism: membrane
- ◆ Travel distance: 3.85 ± 0.5mm
- ◆ Peak load before make (normal key): 55 ± 20g
- ◆ Dimension: 464 (L) x 187 (W) x 43 (H) mm
- ◆ Weight (including batteries): 0.82kg

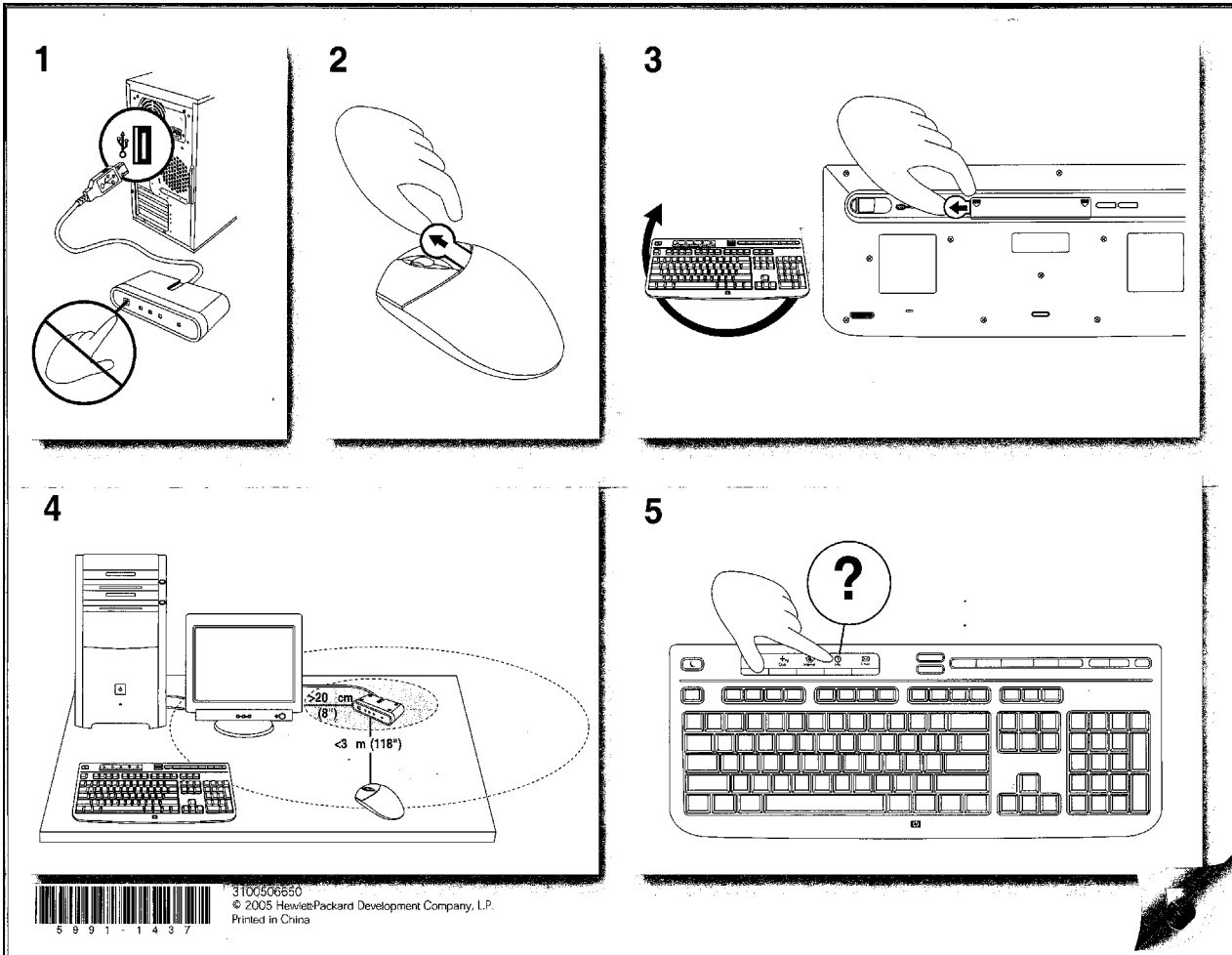
## 3 MOUSE

- ◆ Effective distance: 49MHz: 3M ± 0.2M
- ◆ Battery life: 1.3 months (4hrs/day)
- ◆ Input power: 3Vdc (2 x AA alkaline)
- ◆ Rated output power level (Max): -16dbm
- ◆ Buttons: 2 buttons, scroll button (3-button Type)
- ◆ Tracking: Optical sensor
- ◆ Resolution: 800 DPI
- ◆ Tracking speed: 5 inch/sec
- ◆ Accuracy: 10%
- ◆ Dimension: 119.64 (L) x 64.08 (W) x 40.29 (H) mm
- ◆ Weight (including batteries): 0.09kg

## 4 SYSTEM REQUIREMENTS

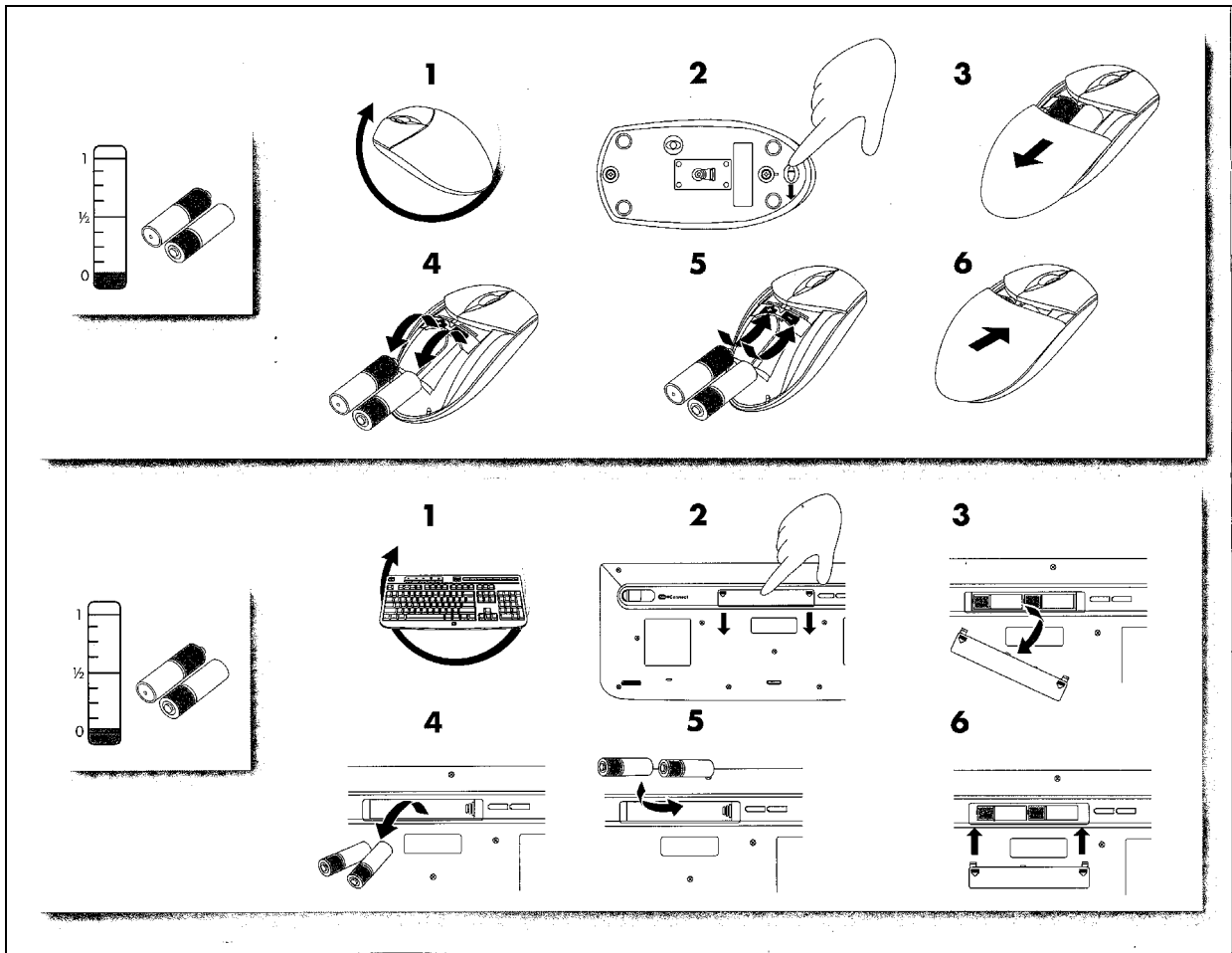
- ◆ IBM PC or compatible
- ◆ Available USB port.
- ◆ CD-ROM drive or DVD drive
- ◆ Microsoft® Windows® 98, Windows® ME, Windows® 2000 or Windows® XP operating system

**Confidential**



CONFIDENTIAL

**Confidential**



COM

**Confidential**  
**Federal Communication Commission**  
**Interference Statement**

This equipment has been tested and found to comply with the limits for a Class B digital device, pursuant to Part 15 of the FCC Rules. These limits are designed to provide reasonable protection against harmful interference in a residential installation. This equipment generates, uses and can radiate radio frequency energy and, if not installed and used in accordance with the instructions, may cause harmful interference to radio communications. However, there is no guarantee that interference will not occur in a particular installation. If this equipment does cause harmful interference to radio or television reception, which can be determined by turning the equipment off and on, the user is encouraged to try to correct the interference by one of the following measures:

- Reorient or relocate the receiving antenna.
- Increase the separation between the equipment and receiver.
- Connect the equipment into an outlet on a circuit different from that to which the receiver is connected.
- Consult the dealer or an experienced radio/TV technician for help.

FCC Caution: Any changes or modifications not expressly approved by the party responsible for compliance could void the user's authority to operate this equipment.

This device complies with Part 15 of the FCC Rules. Operation is subject to the following two conditions: (1) This device may not cause harmful interference, and (2) this device must accept any interference received, including interference that may cause undesired operation.

**INFORMATION TO USER:**

The users manual or instruction manual for an intentional or unintentional radiator shall caution the user that changes or modifications not expressly approved by the party responsible for compliance could void the user's authority to operate the equipment.