

Important Information

For Windows® 2000 and Windows® XP, please visit our website at <http://www.emprex.com/> to download and install the "MouseMaestro Input Device Driver" to access the mouse functions of Tilt Wheel Left, Tilt Wheel Right.

For Windows Vista®, you could use the mouse immediately after plugging the dongle receiver into your PC USB port. If you want to enjoy the full functionality of the mouse, please go to the website at <http://www.emprex.com/> to install the "KeyMaestro Input Device Driver."

Hardware Installation

1. Plug the receiver connector into your available USB port on PC.
2. Make sure the batteries of the mouse are installed correctly, please follow the polarity signs in the battery compartment.
3. Please make sure the slide switch on the back of the mouse is switched to "on" before using the mouse. When not in use, please turn the power switch to "off" for power saving.



➤ Change the cursor pointer speed

You can modify the mouse pointer speed settings in the control panel.

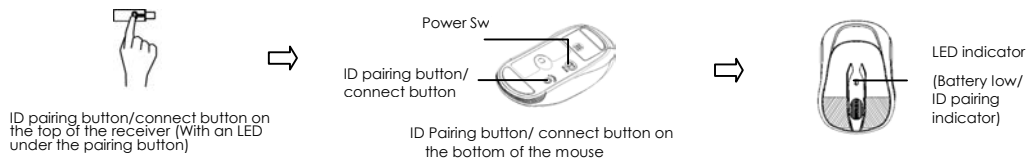
1. Open the Start Menu by clicking "Start" at the lower-left corner on the screen
2. Then click on Settings / Control Panel / Mouse
3. In the Mouse Properties window that appears, click the Motion tab
4. Move the slide bar toward either the faster end or the slower end
5. Click OK to exit and make the change effective

Pairing Procedure

The wireless mouse can operate out of the box immediately after you plug the receiver USB connector into your PC USB port. If it can't work, please follow the steps below to process ID setting of the wireless mouse.

The pairing button locates on the top of the receiver with a LED under to show the pairing or data reception status.

1. Press and hold the ID pairing/connect button on the top of the dongle receiver at least **2 seconds** until the receiver LED flashes. The receiver LED will flash **60 seconds** to wait for mouse pairing information. **(If you release the button within 2 seconds, the ID doesn't make any changes.)**
2. Hold the mouse close to the dongle receiver within **30 cm**.
3. Press and hold the mouse ID pairing/connect button on the bottom of the mouse at least **2 seconds** until the LED indicator on the top of the mouse flashes once. **(If you release the button within 2 seconds, the ID pairing will fail.)**



Note:

1. Your PC must be turned on before doing this pairing procedure.
2. You don't have to pair ID again after changing batteries. If it can't work, please follow the steps above to complete ID pairing.
3. The whole procedure should be completed within **60 seconds**.
4. The mouse can operate freely up to 10 meter from the receiver.
5. Mouse battery life is up to 9 months. It depends on the intensity of usage.

System Requirements



- Microsoft® Windows® 2000, Windows® XP and Windows Vista® operating system
- Available USB port
- CD-ROM driver (for CD or Video operation)

Driver Installation

◆ MouseMaestro Input Device Driver

1. After you download the driver, please find the "SetupKey.exe" in the directory and double-click this file.
2. Then follow the on-screen instruction to install the driver.

Wireless Mouse 無線滑鼠 M969TUL III EMPREX / BTC

3. The driver icon  or  will show at the bottom right of the Windows system tray when the driver is loaded.

English

Wireless Mouse 無線滑鼠 M969TUL III EMPREX / BTC

M969TUL III 快速安裝指南

重要資訊

若您是Windows® 2000、Windows® XP 的使用者，請至以下網址 <http://www.emprex.com/> 下載並安裝“MouseMaestro輸入裝置驅動程式”以使用滾輪向左、滾輪向右和快捷的功能。

若您是Windows Vista® 的使用者，將接收器插入電腦的USB連接埠之後即可立即使用此滑鼠。若您想享有更多功能請至以下網址下載並安裝“MouseMaestro 輸入裝置驅動程式”。

硬體安裝

1. 將接收器連接到電腦上，接收器的接頭連接到電腦的連接埠。
2. 安裝鍵盤的電池，並請注意電池正負極方向。
3. 請先確定滑鼠底部的電源開關已切換至“**啓動(on)**”的狀態之後方可使用此滑鼠。當您不使用滑鼠時可將電源開關切換至“**關閉(off)**”以節省電池電量。



► 改變游標速度

您可以在控制台修改滑鼠游標速度的設定。

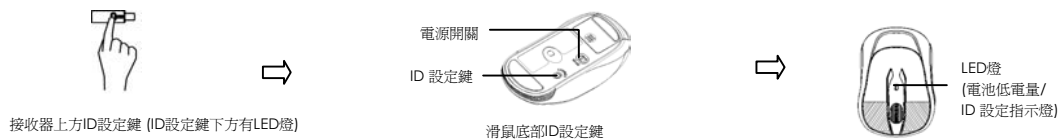
1. 點擊螢幕左下方的“開始”
2. 依序點擊設定/ 控制台/ 滑鼠
3. 點擊滑鼠內容視窗內的“移動”
4. 調整滑鼠游標移動速度
5. 點擊OK離開視窗同時完成設定

ID設定程序

當您將接收器的 USB 連接頭插入電腦的 USB 連接埠之後即可立即使用此無線滑鼠。如果滑鼠無法正常運作的話，請依照下列的步驟重新設定 ID。

位在接收器上方的 LED 燈就是接收器的 ID 設定鍵，此 LED 燈會顯示 ID 設定或訊號接收的狀態。

1. 請按壓接收器上方的ID設定鍵至少**2秒**，一直到接收器的LED閃爍之後再放手。此時接收器ID設定鍵下方的LED燈會緩慢閃爍以表示它已準備好接收滑鼠的設定訊號。**(若您沒有按壓ID設定鍵至少2秒，則無法設定ID)**
2. 滑鼠必須靠近接收器**30公分**以內。
3. 然後請按一次滑鼠底部的ID設定鍵至少**2秒**，一直到位於滑鼠上方的LED燈閃爍一次之後再放手。**(若您沒有按壓ID設定鍵至少2秒，則無法設定ID)**



注意:



1. 電腦為開機狀態下，才可設定ID。
2. 更換電池之後不需重設ID 即可繼續使用此無線滑鼠。如果無法正常使用，請依照上述步驟重新設定ID。
3. 每組ID設定的過程需在**60秒**之內完成。
4. 此無線滑鼠距接收器的有效操作距離可達10公尺。
5. 滑鼠電池壽命可達9個月，視使用頻率而定。

系統需求

- Microsoft® Windows® 2000, Windows® XP or Windows Vista® 作業系統
- 可用的 USB 連接埠
- 光碟機 (播放音樂片與影音光碟片之用)

安裝驅動程式

◆ MouseMaestro 輸入裝置驅動程式

1. 當您下載完驅動程式之後，請雙擊根目錄中的“SetupKey .exe”檔案。
2. 依螢幕指示完成安裝。
3. 當驅動程式的圖示  或  出現在右下角的工作列上時，即表示驅動程式載入成功。

Wireless Mouse 無線滑鼠 M969TUL III EMPREX / BTC

Important Usage Information

English

◆ Battery Information

1. We recommend using alkaline batteries for a longer battery life.
2. Always change batteries when battery low alarm appears, otherwise the mouse will shut down once the battery voltage is too low.
3. Don't mix different types of batteries or new and old batteries together. Always replace old batteries with new and same type batteries.
4. Remove batteries after long periods of non-use. Battery leakage or corrosion may damage the device quality and cause danger.

◆ Battery Low Alarm

When the mouse battery is low, the RED LED indicator on the top of the mouse will flash when the mouse is moved. Please change batteries immediately when the RED LED indicator flashes to ensure the good use of this mouse. After you change the batteries, the RED LED indication will disappear.

◆ Usage Information

- This laser mouse can work on most surfaces, including polished or wood-grain surfaces.
- **While functioning, this mouse emits invisible laser light that may be hazardous to eyes. Avoid looking directly into the emitter hole on the bottom of the mouse.**

◆ Laser Safety Information

This product complies with International Standards EN 60825-1/A2: 2001, Class 1 Laser Product, and also complies with FDA standards Title 21 CFR 1040.10 and 1040.11, except for deviations pursuant to Laser Notice No.50, dated June 24, 2007.

繁體中文

◆ 電池資訊

1. 我們建議使用鹼性電池以獲得較佳的使用效能。
2. 請在低電量警示出現時立即更換電池。當電池電量過低時，滑鼠會直接斷電而無法繼續使用。
3. 勿將型號不同、或者是新舊不一的電池混合使用。請用型號相同且全新的電池來更換舊電池。
4. 如長時間不使用滑鼠，請將電池槽中的電池取出，以免因電池漏液或生鏽而造成滑鼠損毀。

◆ 電池低電量警示：

若您移動滑鼠的時候發現滑鼠上方紅色的LED指示燈不斷閃爍的話，即表示滑鼠電池電量過低。請立即更換滑鼠電池以確保您可正常使用此滑鼠。當您更換新電池之後，滾輪下方紅色的LED指示燈即會停止閃爍。

◆ 使用須知

- 此雷射滑鼠可在大多數表面使用，包括光澤的表面和木頭材質表面。
- **當此滑鼠處於作用狀態時會放射可能傷害眼睛的不可見雷射光束。避免直視滑鼠底部的發射孔。**

◆ 雷射安全資訊

本產品符合國際標準EN 60825-1:2001/A2:2001一級雷射產品性質之標準，亦符合FDA Title 21 CFR 1040.10及1040.11標準，除 FDA 2007年6月24日公告Laser Notice No. 50之差異事項外(deviations pursuant to Laser Notice No. 50 dated June 24, 2007)。

Wireless Mouse 無線滑鼠 M969TUL III EMPREX / BTC

FCC GUIDELINES

This equipment has been tested and found to comply with the limits for a Class B digital device, pursuant to Part 15 of the FCC Rules. These limits are designed to provide reasonable protection against harmful interference in a residential installation. This equipment generates, uses and can radiate radio frequency energy and, if not installed and used in accordance with the instructions may cause harmful interference to radio communications. However, there is no guarantee that interference will not occur in a particular installation. If this equipment does cause harmful interference to radio or television reception, which can be determined by turning the equipment off and on, the user is encouraged to try to correct the interference by one or more of the following measures:

- ◆ Reorient or relocate the receiving antenna.
- ◆ Increase the separation between the equipment and receiver.
- ◆ Connect the equipment into an outlet on a circuit different from that to which the receiver is connected.
- ◆ Consult the dealer or an experienced radio/TV technician for help.
- ◆ Use only shielded cables to connect I/O devices to this equipment.

FCC Warning: This device complies with Part 15 of the FCC Rules. Operation is subject to the following two conditions: (1) this device may not cause harmful interference, (2) this device must accept any interference received, including interference that may cause undesired operation.

FCC Caution: Any changes or modifications not expressly approved by the party responsible for compliance could void the user's authority to operate this equipment.

Information to user:

The users manual or instruction manual for an intentional or unintentional radiator shall caution the user that changes or modifications not expressly approved by the party responsible for compliance could void the user's authority to operate the equipment.

IMPORTANT NOTE:

FCC Radiation Exposure Statement:

This equipment complies with FCC radiation exposure limits set forth for an uncontrolled environment. End users must follow the specific operating instructions for satisfying RF exposure compliance.

This transmitter must not be co-located or operating in conjunction with any other antenna or transmitter.

產品規格：

Specifications:

- ◆ 頻率範圍: 2402MHz-2479 MHz
- ◆ 滑鼠 Output power: 88.01 dBuV/m
- ◆ 接受器 Output power: 96.22 dBuV/m

低功率電波輻射性電機管理辦法：

第十二條：經型式認證合格之低功率射頻電機，非經許可，公司、商號或使用者均不得擅自變更頻率、加大功率或變更原設計之特性及功能。

第十四條：低功率射頻電機之使用不得影響飛航安全及干擾合法通信；經發現有干擾現象時，應立即停用，並改善至無干擾時方得繼續使用。

前項合法通信，指依電信法規定作業之無線電信。

低功率射頻電機需忍受合法通信或工業、科學及醫療用電波輻射性電機設備之干擾。



Do not litter