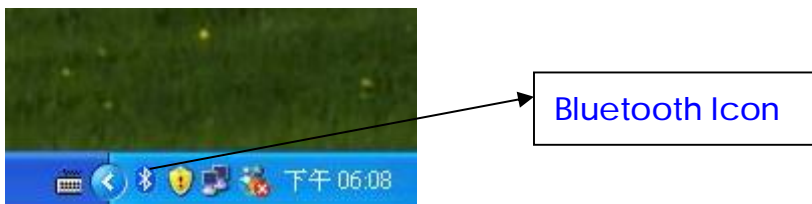


## M988TBL Bluetooth Laser Mouse User's manual

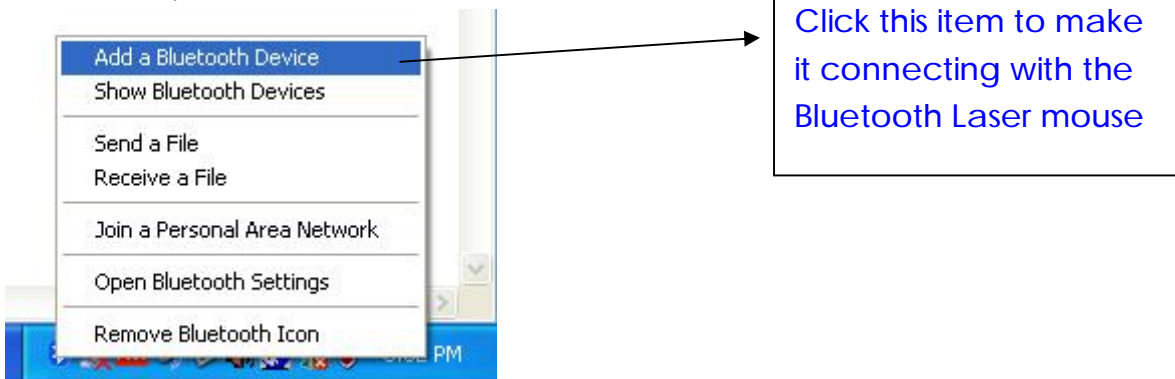


- \* Superior Bluetooth technology with an operating range of up to 10m.
- \* Eliminate the separate receiver to your Bluetooth desktop or laptop PC.
- \* 1600 dpi Laser sensor provides cursor control with ultra-precise tracking.
- \* 800/1600 dpi adjustable resolution.
- \* 5 buttons designed including go backward and forward feature to navigate the browser quickly in history.
- \* 4 - way scrolling for easy internet or document navigation.
- \* Low battery indicator to remind you to change the batteries.
- \* Power On / Off switch for battery life control.
- \* With carrying pouch for added convenience.

1. Right click the bluetooth icon on the toolbar at the lower right of the screen (on control panel).

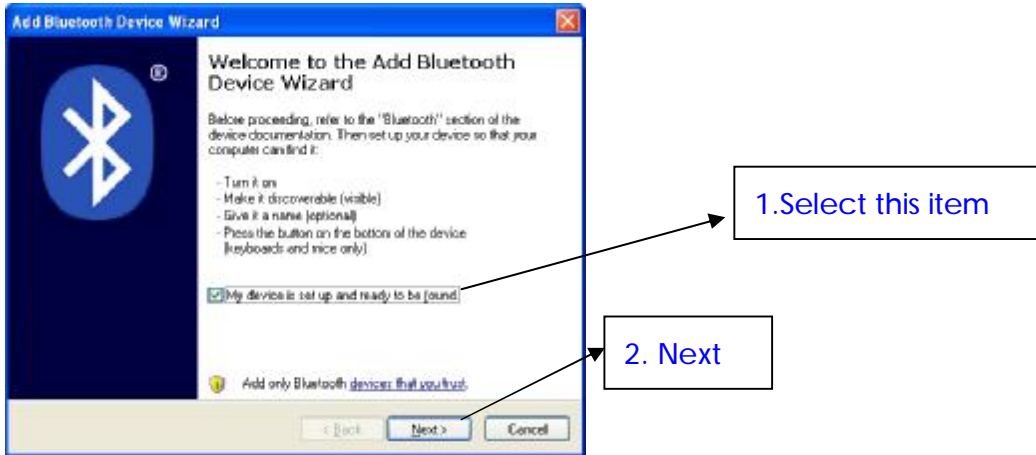


2. And then, click "Add a Bluetooth Device".

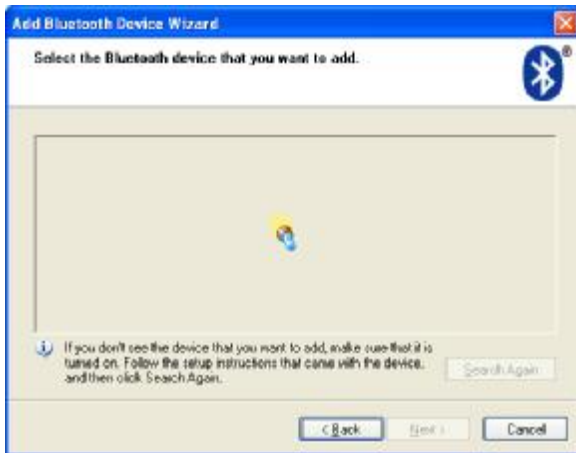


3. The "Add Bluetooth Device Wizard" dialog box will pop up. Check the "My device is set up and ready to be found" and click "Next".

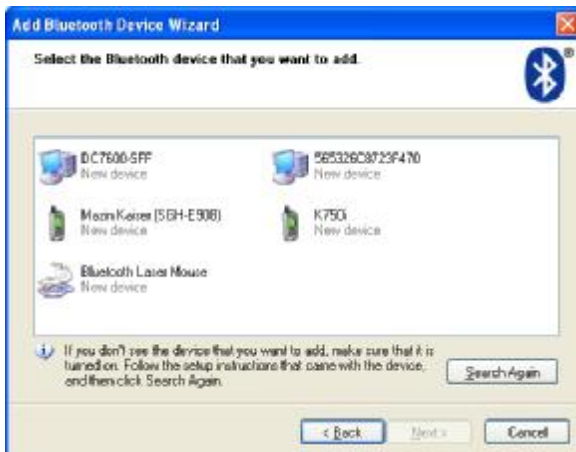
(Before connecting the Bluetooth Device, please power on your mouse by switching the Power switch to ON. Then, press the connect button on the bottom of the mouse about 2~3 seconds until the LED indicator on the top of the mouse flashes. And the LED indicator will flash about 5 minutes to wait for the detection of the PC.)



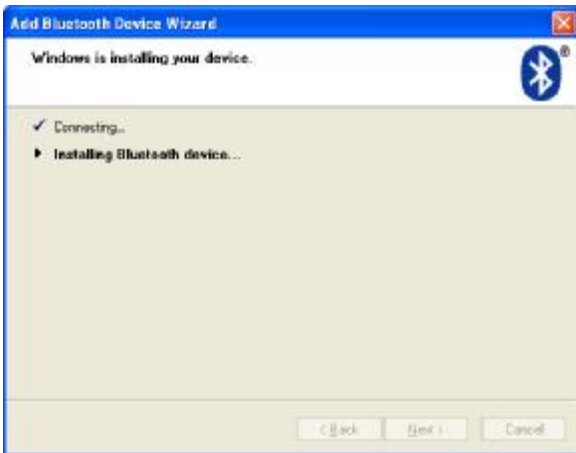
4. The "Add Bluetooth Device Wizard" will begin to detect the Bluetooth device.



5. Select the "Bluetooth Laser Mouse" in the list.



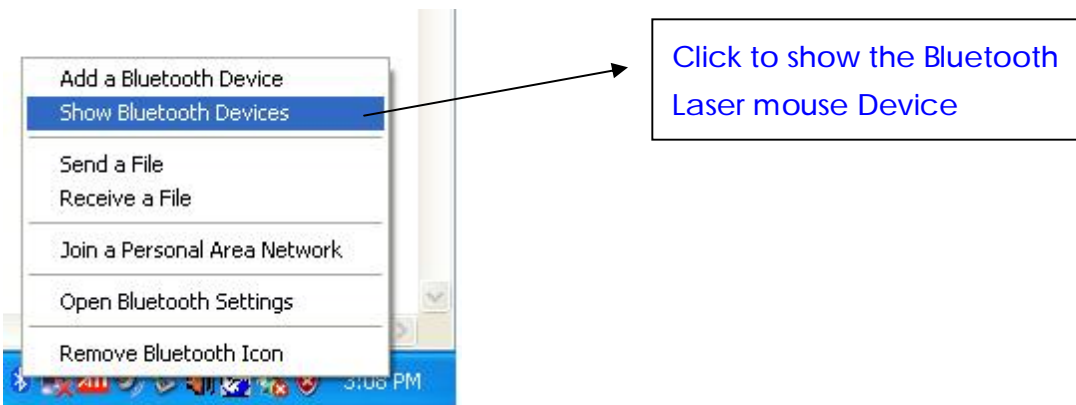
6. Establish a link between the computer and the mouse.



7. After installation, the LED indicator will flash 2 seconds to indicate it's paired with the PC.



8. Right click the Bluetooth icon, and select "Show Bluetooth Devices" to show the Bluetooth Laser Mouse paired with PC.





## Package Contents

- Wireless mouse
- Quick installation Guide
- Two AA alkaline batteries
- Pouch
- CD ROM Driver

## System Requirements

- Windows® XP, Windows Vista® operation system
- PC with Bluetooth device built-in
- Broadcom / Widcomm Bluetooth® BTW 1.4.2.21 or later version, Windows® XP SP2, or Windows® XP Professional x64 version
- CD-ROM

Product detail:

Left/Right-Handed Design	YES
Number of Buttons	5 Button Mouse Design
Resolution	Default 800 & option 1600.DPI
Laser Technology	YES
Port Connection	USB
Scrolling Wheel	4Way Scroll Wheel (with Tilt)

## FCC GUIDELINES

This equipment has been tested and found to comply with the limits for a Class B digital device, pursuant to Part 15 of the FCC Rules. These limits are designed to provide reasonable protection against harmful interference in a residential installation. This equipment generates, uses and can radiate radio frequency energy and, if not installed and used in accordance with the instructions may cause harmful interference to radio communications. However, there is no guarantee that interference will not occur in a particular installation. If this equipment does cause harmful interference to radio or television reception, which can be determined by turning the equipment off and on, the user is encouraged to try to correct the interference by one or more of the following measures:

- Reorient or relocate the receiving antenna.
- Increase the separation between the equipment and receiver.
- Connect the equipment into an outlet on a circuit different from that to which the receiver is connected.
- Consult the dealer or an experienced radio/TV technician for help.
- Use only shielded cables to connect I/O devices to this equipment.

This device complies with Part 15 of the FCC Rules. Operation is subject to the following two conditions: (1) this device may not cause harmful interference, (2) this device must accept any interference received, including interference that may cause undesired operation.

### *Information to User:*

- F** *Any changes or modifications not expressly approved by the party responsible for compliance could void the user's authority to operate this equipment.*
- Shielded interface cable, if any, must be used in order to comply with emission limits.*