

PM2400 TABLE OF CONTENTS

IMPORTANT SAFETY INSTRUCTIONS	1
FCC REGULATIONS	3
BATTERY CAUTIONARY INSTRUCTIONS	5
PM2400 PARTS CHECKLIST	6
CONTROLS AND FEATURES	7
CHOOSING A LOCATION	9
TELEPHONE SET-UP	10
BATTERY INSTALLATION	12
BASIC OPERATION	14
SPEED DIALING	15
OTHER FEATURES	16
CARE AND MAINTENANCE	17
TROUBLE SHOOTING	18
GLOSSARY	20
WARRANTY STATEMENT	21

Thank you for purchasing this PhoneMate Telephone.
Please read this manual carefully prior to using.

PhoneMate and the PhoneMate Logo are registered trademarks of PhoneMate Corporation and are used under license from PhoneMate Corporation.

IMPORTANT SAFETY INSTRUCTIONS

Model PM2400



!! Always follow basic safety precautions when using this product to reduce the risk of injury, fire, or electrical shock.

When using this product, basic precautions should always be followed to reduce the risk of fire, electric shock and injury to persons, including the following:

1. Read and understand all instructions
2. Follow all warnings and instructions marked on the product.
3. Use only with class 2 power source DC 9V 300mA.
4. Unplug this product from the wall outlet before cleaning. Do not use liquid cleaners or aerosol cleaners. Use a damp cloth for cleaning.
5. Do not use this product near water; for example, near a bathtub, wash bowl, kitchen sink, or laundry tub, in a wet basement or near a swimming pool.
6. Do not place this product on an unstable cart, stand, or table. The product may fall causing serious damage to the product.
7. Slots and openings in the cabinet back or bottom are provided for ventilation. To protect it from overheating, these openings must not be blocked or covered. The openings should never be blocked by placing the product on the bed, sofa, rug, or other similar surface. This product should never be placed near or over a radiator or heat register. This product should not be placed in an enclosed environment unless proper ventilation is provided.
8. Do not allow anything to rest on the power cord. Do not locate this product where the cord will be abused by animals or persons walking on it.
9. Do not overload wall outlets and extension cords as this can result in risk of fire or electrical shock.
10. Never push objects of any kind into this product through cabinets slots as they may touch dangerous voltage points or short out parts that could result in a risk of fire or electrical shock. Never spill liquid of any kind on the product.
11. To reduce the risk of electrical shock, do not disassemble this product. Instead take it to a qualified service person when service or repair work is required. Opening or removing covers may expose you to dangerous voltages or other risks. Incorrect re-assembly can cause electrical shock when the appliance is subsequently used.
12. Unplug all cords and refer servicing to qualified service personnel under the following conditions:
 - i When the power supply cord or plug is damaged or frayed
 - ii If liquid has been spilled into the product.
 - iii If the product has been exposed to rain or water.
 - iv If the product does not operate normally by following the operating instructions, adjust only those controls covered in the operating instructions. Improper

IMPORTANT SAFETY INSTRUCTIONS

adjustment of other controls may result in damage and require work by a qualified technician to restore the product to normal operation.

13. Avoid using a telephone (other than a cordless type) during an electrical storm. There may be a remote risk of electric shock from lightning.
14. Do not use a telephone to report a gas leak in the vicinity of the leak.

IF YOUR PRODUCT UTILIZES BATTERIES, THE FOLLOWING ADDITIONAL PRECAUTIONS SHOULD BE OBSERVED:

1. Use only the type and size of batteries specified in the users manual.
2. Do not dispose of batteries in a fire. The cells may explode. Check with local codes for possible special disposal instructions.
3. Do not open or mutilate the batteries. Released electrolyte is corrosive and may cause damage to the eyes or skin. It maybe toxic if swallowed.
4. Exercise care in handling batteries in order not to short the battery with conducting materials such as rings, bracelets and keys. The battery or conductor may overheat and cause burns.
5. Do not attempt to recharge the batteries with this product or identified for use with this product. The batteries may leak corrosive electrolyte or explode.
6. Do not attempt to rejuvenate the batteries provided with or identified for use with this product by heating them. Sudden release of the battery electrolyte may occur causing burns or irritation to eyes or skin.
7. When replacing batteries, all batteries should be replaced at the same time. Mixing fresh and discharged batteries could increase internal cell pressure and rupture the discharged batteries.
8. When inserting the batteries into this product, the proper polarity or direction must be observed. Reverse insertion of the batteries can cause charging, which may result in leakage or explosion. If a battery is installed incorrectly it may explode.
9. Remove the batteries from this product if the product will not be used for a long period of time (several months or more) since during this time the batteries could leak, damaging the product.
10. Discard "dead" batteries as soon as possible since they are more likely to leak in a product.
11. Do not store this product, or the batteries provided with or for identified use with this product, in high temperature areas.
12. If your product uses a rechargeable battery, charge the battery (ies) only in accordance with the instructions and limitation specified in the User Manual.
13. Plug the adaptor to the socket-outlet that is nearest to the equipment and shall be easily accessible.

SAVE THESE INSTRUCTIONS

FCC REGULATIONS

WARNING: Changes or modifications to this unit not expressly approved by the party responsible for compliance could void the user's authority to operate the equipment.

1. This equipment complies with Part 68 of the FCC rules and the requirements adopted by the ACTA. On the bottom of this equipment is a label that contains, among other information, a product identifier in the format US : AAAEQ##TXXXX. If requested, this number must be provided to the telephone company.
2. The USOC number of the registration jack for the equipment is RJ11C.
3. A FCC compliant telephone cord and modular plug is provided with this equipment. This equipment is designed to be connected to the telephone network or premises wiring using a compatible modular jack which is Part 68 compliant. See Installation Instructions for details.
4. The REN is used to determine the quantity of devices which may be connected to the telephone line. Excessive RENs on the telephone line may result in the devices not ringing in response to an incoming call. In most, but not all areas, the sum of RENs should not exceed five (5.0). To be certain of the number of devices that may be connected to a line, as determined by the total RENs, contact the local telephone company.
5. If this terminal equipment causes harm to the telephone network, the telephone company will notify you in advance that temporary discontinuance of service may be required. But if advance notice isn't practical, the telephone company will notify the customer as soon as possible. Also, you will be advised of your right to file a complaint with the FCC if you believe it is unnecessary.
6. The telephone company may make changes in its facilities, equipment, operations or procedures that could affect the operation of the equipment. If this happens the telephone company will provide advance notice in order for you to make necessary modifications to maintain uninterrupted services.
7. The equipment cannot be used on public coin phone service provided by the telephone company. Connection to party line service is subject to state tariffs.
8. Please follow all instructions when replacing any parts (e.g. battery replacement section), otherwise do not attempt to alternate or repair any parts of the device except those specified.
9. This equipment, if it uses a telephone handset is hearing aid compatible.
10. If trouble is experienced with this equipment, for repair or warranty information, please contact the service center below. If the equipment is causing harm to the telephone network, the telephone company may request that you disconnect the equipment until the problem is resolved.

FCC REGULATIONS

Service can be obtained at:

PhoneMate Service Center
14515 Valley View Ave. #B
Santa Fe Springs, CA
90670

INTERFERENCE INFORMATION: PART 15 OF FCC RULES

Some telephone equipment generates and uses radio frequency energy, which if not properly installed, may cause interference to radio and television reception.

This unit has been tested and found to comply with the limits for a Class B computing device in accordance with the specifications in Part 15 of the FCC rules. These specifications are designed to provide reasonable protection against such interference in a residential installation.

If this equipment does cause interference to radio or television reception, when it's in use, the user is encouraged to try to correct the interference by one or more of the following measures:

- A. Where it can be done safely, reorient the radio or TV receiving antenna.
- B. To the extent possible, relocate the television, radio, or other receiver with respect to the telephone equipment.
- C. If your telephone products run on AC power, plug your product into an AC outlet that's not on the same circuit as the one used by the radio or television.

NOTICE : If your home has a wired alarm equipment system connected to the telephone line, ensure the installation of this PM2400 does not disable your alarm equipment. If you have questions about what will disable the alarm equipment, consult your telephone company or a qualified installer.

This device complies with Part 15 of the FCC rules. Operation is subject to the following two conditions : (1) This device may not cause harmful interference, and (2) This device must accept any interference received, including interference that may cause undesired operation. Privacy of communications may not be ensured when using this phone.

BATTERY CAUTIONARY INSTRUCTIONS



CAUTION :

Risk of explosion if battery is replaced by an incorrect type. Dispose of used batteries according to the instructions:

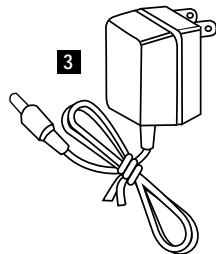
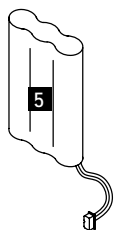
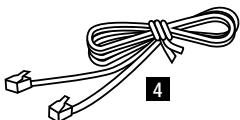
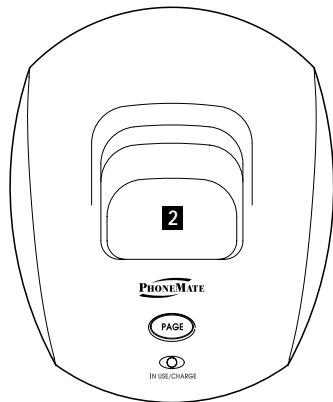
- For the cordless handset, use only 3.6V 400mAh Nickel-Cadmium (Ni-CD), SN05-AS003-215 made by SANIK BATTERY Co.,Ltd, cordless telephone battery pack. (included).
- Do not dispose of the batteries in a fire. The cells may explode. Check with local codes for possible special disposal instructions.
- Do not open or mutilate the batteries. Released electrolyte is corrosive and may cause damage to the eyes or skin. It may be toxic if swallowed.
- Exercise care in handling batteries in order not to short the battery with conducting materials such as rings, bracelets, and keys. The battery or conductor may overheat and cause burns.
- Do not attempt to rejuvenate the batteries identified for use with this product by heating them. Sudden release of the battery electrolyte may occur causing burns or irritation to eyes or skin.
- When inserting batteries into this product, the proper polarity or direction must be observed. Reverse insertion of batteries can cause charging, and that may result in leakage or explosion.
- Remove the batteries from this product if the product will not be used for a long period of time (several months or more) since during this time the battery could leak in the product.
- Do not store this product, or the batteries identified for use with this product, in high temperature areas. Batteries that are stored in a freezer or refrigerator for the purpose of extending shelf life should be protected from condensation during storage and defrosting.

Batteries should be stabilized at room temperature prior to use after cold storage.



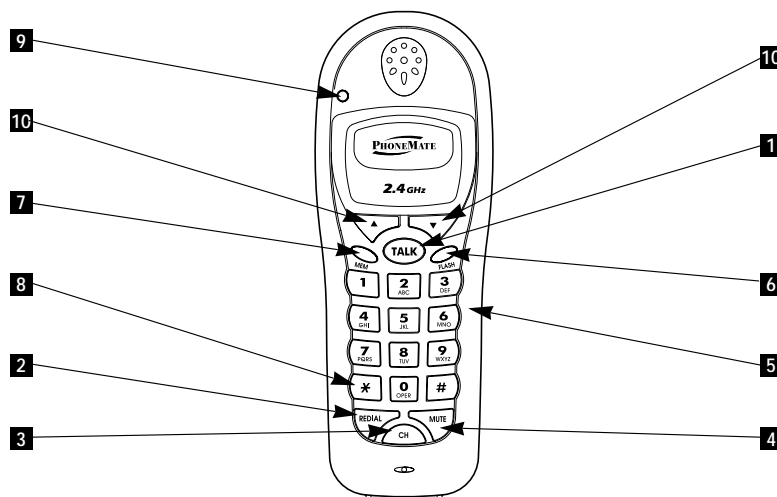
PM2400 PARTS CHECKLIST

- 1** Handset
- 2** Base
- 3** AC power adapter
- 4** Cord for desk use
- 5** Ni-CD battery pack



CONTROLS AND FEATURES

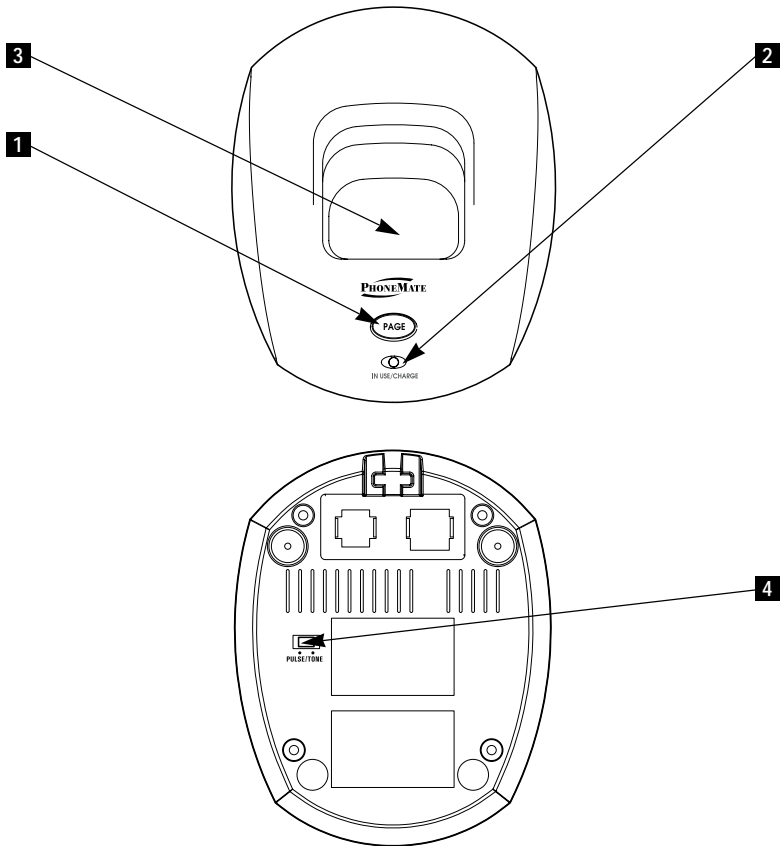
- 1** Talk
The **Talk** is used to access the telephone line or end a call.
- 2** Redial Key
When the phone is off-hook, press **Redial** key to redial the last number dialed. **Redial** is also used to insert a measured pause into a number stored in the phone book.
- 3** Channel Key (CH)
The **CH** key, if pressed when the line is off-hook, will scan up to 40 channels and select the clearest one to provide the best possible reception.
- 4** Mute Key
The **Mute** key is used to temporarily mute the handset microphone.
- 5** Dial Pad
Numeric keys are used in the conventional manner for dialing.
- 6** Flash Key
The **Flash** key is used to access telephone company services, such as call waiting.
- 7** Memory Key (MEM)
Use **MEM** to program and retrieve the numbers in the speed dial directory.
- 8** Temporary Tone key *
If the base is set to pulse dialing, pressing * causes subsequent digits to be dialled out using tone until the line is put back on hook.
- 9** In Use LED
On (red) when line is in use. Flashes steadily when the phone is muted.
- 10** Volume Switch
The **Volume** switch is used to adjust the handset receiving level among **Hi, Low**.



CONTROLS AND FEATURES

BASE

- | | |
|--|--|
| <p>1 Page
Used to initiate a handset page.</p> <p>2 Charge LED
On (red) when the handset is on the cradle being charged or when the handset is in use. On if the line is in use.</p> | <p>3 Charging Contacts
Used to recharge battery and reset the security code in the handset.</p> <p>4 Tone/Pulse Switch
Used to set the dialing method for tone or pulse dialing. It is located at the bottom of the base unit.</p> |
|--|--|



CHOOSING A LOCATION



When installing your telephone, consider the following:

The best location:

- Near a central location on a level dry surface.
- Away from microwave ovens
- Away from VCR's and TV sets and other electronic equipment
- Away from sources of noise, such as windows opening onto a busy street
- Away from personal computers
- Away from excessive moisture, extremely low or extremely high temperatures, dust, mechanical vibration or shock.

The location of your telephone affects the quality of the reception. Consider the following when choosing a location or if you are experiencing poor reception.

- Away from other cordless telephones
- Place the base near an AC electrical outlet and near a telephone line jack
- Place the base away from metal walls and metal file cabinets.
- Try to avoid power bars or multiple appliances plugged into the same electrical outlet

CAUTION: The cordless telephone operates at a frequency that may cause interference to nearby TV's and VCR's; the base phone should not be placed near, or on top of a TV or VCR. If interference is experienced, moving the cordless phone telephone farther away from the TV or VCR will often reduce or eliminate the interference.

TELEPHONE SETUP

Connecting the Base

1. Connect the telephone line cord to the "TEL LINE" jack and to a telephone outlet.
2. Connect the AC power adapter to the 9V DC jack and to an AC outlet.

Note: Use only the supplied AC power adapter. Do not use any other AC power adapter. Connect the AC power adapter to a continuous power supply. Place the phone close to the AC outlet so that you can plug in the AC power adapter easily.

TIP: If your telephone outlet is not modular, contact your telephone company for assistance.

Tone/Pulse Switch

1. Choose the correct dialing mode.
2. Select the dialing mode Tone or Pulse by setting the switch at the bottom of the base unit.

Note: Changes to the switch position during a call do not take effect until the call has ended.

TIP: If you are unsure of the proper dialing mode, make a trial call with the dial mode setting to TONE. If the call connects, leave the switch as is (TONE mode), otherwise, set to PULSE.

Handset Ringer Switch

Adjust the handset ringer volume using the **RINGER** switch on the right side of the handset. Select between ringer **On**, or ringer **Off**.

Wall Mounting

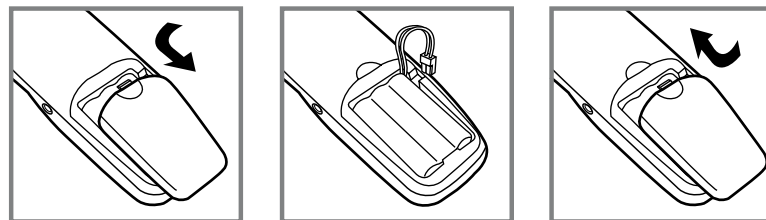
The PM5800 telephone conforms to a standard wall mount bracket. If you are not using a standard wall mount bracket, the PM5800 may be installed onto two screws (not included) fastened into the wall. When installing screws into plasterboard walls, use wall anchors (not included) to ensure that the screws remain secure. Place the base unit on the wall and mark the location of the screws. Insert the screws in the wall leaving 3/16" of each screw extending out from the wall.

BATTERY INSTALLATION

Model PM2400

To install the 3.6V 600mAh cordless handset battery pack:

1. Slide open the battery compartment door on the back of the handset.
2. Plug the battery connector into the 2-pin connector in the battery compartment, and then insert the battery.
3. Close the battery compartment door.
4. Place the handset on the base unit cradle.
5. Once you have installed the battery pack and placed the handset on the base you will hear a tone indicating the handset has connected with the base and will successfully charge.
6. **IMPORTANT:** Charge the battery pack for at least 12 hours before using the handset the first time.
7. The **CHARGE LED** on the base illuminates when the handset is properly making contact with the charge terminals.



Battery Duration

A fully charged battery lasts for approximately:

- 3 hours when you use the handset continuously (talk time).
- 3 days when the handset is not in use (standby).

When the Battery Needs Charging

- The handset will beep in a talk mode.
- The **In Use/Batt. Low LED** will flash in an idle mode.



BASIC OPERATION

Making Calls

1. If the handset is in the base, lift the handset from the base. Push the "Talk" button and listen for the dial tone.
2. Dial the number you wish to dial.
3. When you are finished talking, press the Talk key or place the unit back into the base to end the call.

Note: The **IN USE** light on the handset will illuminate when the line is active.

Receiving Calls

When you hear the phone ring:

1. If the handset is in the base, lift the handset from the base. Push the "Talk" button to answer the call.
2. If the handset is off the base, you will need to press Talk to answer the call.
3. When you are finished, push Talk or place the handset back on the base.

Additional Options

TO	DO THIS
Redial the last number	Press Talk . Wait for dial tone and then press Redial .
Adjust the volume in the earpiece	Switch the Volume switch during a call until the desired volume level is reached.
Switch to temporary tone dialing	Press the * key after the phone is in use. The phone will remain in tone dialing mode for the duration of the call.
Mute a call	Press the Mute key. Press Mute to continue speaking to the caller



SPEED DIALING

The Unit will store up to 10 speed dial numbers.

Storing Phone Numbers

1. With the handset in the idle state, press **MEM**. The handset will beep.
2. Dial the number you wish to store (up to 16 digits).

Note: Press **Redial** to insert a dialing pause into the number. The pause lasts for 4 seconds and uses one digit of the 16 digits available.

3. Press **MEM**.
4. Press the dial pad key for the location where you wish to store the number. The handset will give a confirmation tone.

Note: If you make a mistake the handset will give three quick beeps to let you know that the number was not stored.

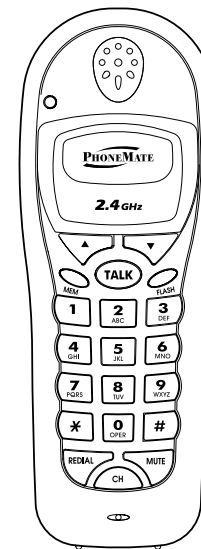
Making Speed Dial Calls

1. Push **Talk**. The LED on the handset will flash while the handset is scanning for a clear channel. The LED In Use LED will glow steadily when a connection is made. Wait until you hear a dial tone.
2. Press **MEM** and the dial pad key location where the number is stored.
3. When you are finished with your call, press **TALK**, or place the handset back on the base.

Note: Be sure to check that the line is not in use by another extension.

Deleting a Stored Number

1. With the handset in the idle state, press **MEM**. The handset will beep.
2. Press **Redial** and then press **MEM**. After each press the phone will beep.
3. Press the dial pad key location where the stored number that you want to delete is located. The handset will give a confirmation tone.



OTHER FEATURES

Using the Handset Finder (PAGE)

1. Press **Page** on the base. If the handset is within range, a triple beep will sound for 50 seconds.
2. Place the handset in the base or press the **PAGE** key on the base or press the **TALK** key on the handset, to stop the page.

Security Code

The security code prevents your cordless telephone conversation from being accessed by a phone on a different line. Once the handset battery is fully charged, the handset will automatically select the code from a total of over 65,000 combinations. The code is changed every time the handset is placed in the cradle (indicated by a beep).

If you experience difficulty with placing or receiving calls, a lost security code may be the cause of the problem. When this occurs, the handset can no longer communicate with the base. Reset by placing the handset on the base for 5-10 seconds. If that does not work, unplug the AC adapter from the wall outlet. Disconnect the handset battery for 5-10 seconds and then reconnect. Place the handset back on the base and then replug the AC adapter.

Channel Changing

If you are experiencing interference during a telephone call, press the **CH** key. The Unit will scan up to 40 channels and select the clearest one to provide the best possible reception.

Out of Range Warning

If the handset is moving too far away from the base, the phone will sound a triple beep every two seconds to warn you that it is out of range. Move closer to the base to end the beeping and maintain the connection on your phone call. Otherwise, the call may be disconnected.

CARE AND MAINTENANCE

Model PM2400

Your PhoneMate PM2400 telephone has been designed to give years of trouble-free service. It is a sensitive electronic instrument. To assure its longevity, please read the following maintenance instructions.

1. Keep the PM2400 away from heat as high temperatures can shorten the life of the electrical components and distort or melt its plastic parts.
2. The PM2400 should be kept free of dust and moisture. If it gets wet, wipe it dry immediately. Liquids can contain minerals that can corrode electronic circuits.
3. Handle your PM2400 gently and carefully. Dropping it can cause serious damage to circuitry, or the plastic case, which may result in malfunction.
4. Do not use any type of chemical or any abrasive powder to clean the cabinet. Use only mild detergents on a soft damp cloth to clean the PM2400 telephone.
5. The PM2400 has built-in surge protection circuits that meet or exceed FCC requirements. However, an incident such as a lightning strike at or near the telephone lines, could cause serious damage.
6. If the PM2400 is installed in an area with frequent or severe electrical storms, it is suggested that the telephone be disconnected during these storms or that additional surge suppression equipment be added to the installation.
7. In the case of trouble with the telephone, do not attempt to repair the telephone yourself. It is the responsibility of users requiring service to report the need for service to our Service Department. They will make the necessary arrangements for repair or replacement.
8. If you should have any questions regarding the operation of your PhoneMate PM2400, please visit our web site: www.phonemate.com
9. Please register your product by mailing in the Product Registration form included with your PhoneMate PM2400

TROUBLE SHOOTING

No dial tone/phone will not dial out

- Check that the AC power adapter is plugged into a working AC power outlet.
- Check all telephone cord connections or try another wall jack.
- Do a basic reset of the phone: Disconnect the phone from the wall and remove the battery for 30 minutes and then re-install as instructed by the manual.
- Try other phones in the house to ensure it is not a line problem with the telephone company.
- Was the battery charged for at least 12 – 15 hours?
- Is the "LOW BATTERY INDICATOR" on?

Can't hear the ring signal

- Check the ringer volume controls; verify that the switch is not set to "Off".
- Check that the AC power adapter is plugged into a working AC power outlet.
- Check all telephone cord connections or try another wall jack

While on a call, you hear another call on the line or experience radio frequency interference

- Switch channels to a clear channel
- Check the wiring for bad connections
- Do not use this phone within close proximity to other electronic appliances such as TV's, VCR's and microwave ovens

Can't receive or make phone calls

- Check if the phone is set to the correct type of service, either Tone or Pulse
- Check that the AC power adapter is plugged into a working AC power outlet.
- Check all telephone cord connections or try another wall jack
- Check to make sure that the Battery is properly installed and connected

TROUBLE SHOOTING



There are continuous short beeps instead of a dial tone when the handset is far from the base

- The beeps are a warning that you are too far away from the base. Move closer to the base.

There is interference on the handset

- Was the battery charged for at least 12 – 15 hours?
- Is the "LOW BATTERY INDICATOR" on?
- Move closer to the base.
- Is the phone within close proximity to other electronic appliances such as TV's, VCR's and microwave ovens?

The LOW BATTERY INDICATOR lights after a few telephone calls, even though the battery has been fully charged for 12-15 hours

- Replace the battery pack with a new battery

EXTRA HELP

- Should you have any additional questions, please visit our web site at www.phonemate.com

GLOSSARY

PBX (Private Branch Exchange)

A small, central, privately owned, switching telephone system where a digit (like "9") must be dialed first in order to access an outside line.

FLASH

A signal sent by the phone to the local telephone company supporting services such as call waiting.

REDIAL

Performs single button dialing of the last number dialed.

RINGER LEVEL CONTROL

Permits adjustment of the ringer volume level.

SPEED DIALING

Allows programming of frequently dialed numbers so that they can be dialed with the two touch speed dial button.

TONE/PULSE OPTION

Enables you to switch from pulse (rotary dial method) to tone (push button) dialing.

VOLUME LEVEL CONTROL

Permits volume adjustment of the handset and headset during a conversation.

WARRANTY

Model PM2400

IMPORTANT! SALES SLIP OR EVIDENCE OF PURCHASE DATE REQUIRED.

This limited warranty gives you specific legal rights: you may also have other rights, which vary from state to state. The limited warranty is extended only to the original consumer of a PhoneMate branded product by the Manufacturer and is valid only with respect to consumers within the United States of America and Canada. Should this product prove defective by reason of improper workmanship or material during the period of one (1) year from date of original purchase, the Manufacturer will repair or, at its option, replace the product without charge for parts or labor. If Manufacturer elects to replace the product, such replacement may be accomplished with a factory-reconditioned unit.

This limited warranty does not apply: (a) to any product damaged by accident, misuse, improper line voltage, lightning, fire, water, or other acts of nature, (b) if the product is altered or repaired by anyone other than the Manufacturer or one of its authorized warranty stations or (c) if the FCC-approved connector plugs are removed. This limited warranty does not cover broken or marred cabinets.

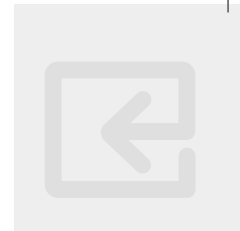
Except to the extent prohibited by law, all implied warranties made by the Manufacturer in connection with this product are limited in duration to a period of one (1) year from the date of original purchase, and no warranties, whether expressed or implied, shall apply to this product after said period.

Should this product prove defective in workmanship or material, the consumer's sole remedies shall be such repair or replacement as is herein above provided. Under no circumstances shall the Manufacturer or PhoneMate Corporation be liable for any loss or damage, direct, consequential, or incidental arising out of the use of or inability to use this product.

Some states do not allow limitations on how long an implied warranty lasts or the exclusion or limitation of incidental or consequential damages, so the above limitations or exclusions may not apply to you.

In order to obtain warranty service, you must provide evidence of purchase date. For your convenience, keep the dealer's dated bill of sales or delivery ticket as evidence of the purchase date.

PhoneMate and the PhoneMate Logo are registered trademarks of PhoneMate Corporation and are used under license from PhoneMate Corporation.



Model PM2400

2.4GHz

C O R D L E S S
T E L E P H O N E

www.phonemate.com

INSTALLATION
AND
OPERATING
GUIDE