

BELKIN

54g Wireless Notebook Network Card

Share your broadband Internet connection and files



belkin.com

Belkin Corporation

501 West Walnut Street
Compton • CA • 90220 • USA
Tel: 310.898.1100
Fax: 310.898.1111

Belkin Components, Ltd.

Express Business Park
Shipton Way • Rushden • NN10 6GL
United Kingdom
Tel: +44 (0) 1933 35 2000
Fax: +44 (0) 1933 31 2000

Belkin Components B.V.

Starparc Building • Boeing Avenue 333
1119 PH Schiphol-Rijk • The Netherlands
Tel: +31 (0) 20 654 7300
Fax: +31 (0) 20 654 7349

Belkin, Ltd.

7 Bowen Crescent • West Gosford
NSW 2250 • Australia
Tel: +61 (0) 2 4372 8600
Fax: +61 (0) 2 4372 8603

Belkin Tech Support

US: 310.898.1100 ext. 2263
800.223.5546 ext. 2263
Europe: 00 800 223 55 460
Australia: 1800 666 040

P74217

© 2003 Belkin Corporation. All rights reserved. All trade names are registered trademarks of respective manufacturers listed.



User Manual

F5D7010

TABLE OF CONTENTS

Introduction	1
Overview	2
Features	2
Applications and Advantages	3
Product Specifications	4
System Requirements	4
Package Contents	4
Knowing your Card	5
Installing and Setting Up the Card	6
Software and Driver Installation	6
Connecting to your Wireless Network	12
Uninstalling the Software and Drivers	12
Using the Belkin Wireless LAN Configuration Utility	13
The Wireless Networks Tab	16
Encryption	19
The Link Status Tab	20
The Site Survey Tab	23
Diagnostics	25
Troubleshooting	27
Information	30

INTRODUCTION

Thank you for purchasing the Belkin 54g Wireless Notebook Network Card (the Card). Now you can take advantage of this great new technology and gain the freedom you need around the home or office without using cables. The Wireless Notebook Network Card works like a conventional network card, but without the wires. The easy installation and setup will have you networking wirelessly in minutes. Please be sure to read through this manual completely to be sure that you are getting the most out of your Wireless Notebook Network Card.

OVERVIEW

Features

The Card complies with the IEEE 802.11b standard in order to communicate with other 802.11b-compliant wireless devices at 11Mbps as well as other 54g products at 54Mbps that have the 54g™ badge on the package.

54g products run at speeds of up to 54Mbps and operate on the same 2.4GHz frequency band as 802.11b Wi-Fi products.

- 2.4GHz ISM (Industrial, Science, and Medical) band operation
- Integrated easy-to-use Wireless Configuration Utility
- Wireless interface compliance with the IEEE 802.11b standard and 54g products
- PCMCIA interface, for operation in virtually any notebook computer
- 64 or 128-bit Wireless (WEP) Encryption
- Wireless access to networked resources
- Support for both Infrastructure and Ad-Hoc (peer-to-peer) networking modes
- Data rate of up to 54Mbps
 - o Supports 11, 5.5, 2 or 1Mbps rates (802.11b)
 - o Supports 54, 48, 36, 24, 18, 12, 9, or 6Mbps rates (54g)
- Easy installation and use
- Internal antenna
- LED power and network link indicators

OVERVIEW

Applications and Advantages

- **Wireless roaming with a laptop around the home or office**

Offers the freedom of networking without cables.

- **Connection rates of up to 54Mbps**

Provides immediate, higher-speed wireless connectivity at home, work, and hot spot locations without compromising the use of existing 802.11b products.

- **Compatibility with 802.11b products**

54g wireless LAN solutions are backward-compatible with existing Wi-Fi (IEEE 802.11b) products and with other products that display the 54g mark.

- **Difficult-to-wire environments**

Enables networking in buildings with solid or finished walls, or open areas where wiring is difficult to install.

- **Frequently changing environments**

Adapts easily in offices or environments that frequently rearrange or change locations.

- **Temporary LANs for special projects or peak time**

Sets up temporary networks such as at trade shows, exhibitions, and construction sites, which need networks on a short-term basis; also companies who need additional workstations for a peak activity period.

- **SOHO (Small Office/Home Office) networking needs**

Provides the easy and quick, small network installation SOHO users need.

OVERVIEW

Product Specifications

Host Interface:	32-bit CardBus
Power Consumption:	Tx/Rx peak 550/350mA @ 3.3VDC (max.)
Certification:	FCC Class B, CE Mark, C-Tick
Operating Temperature:	(0–85 degrees C)
Storage Temperature:	(-40–90 degrees C)
Humidity:	Max. 95% (non-condensing)
Typical Operating Range:	802.11b: 590.6 ft. (180m) @ 11Mbps, 984.3 ft. (300m) @ 5.5 Mbps or lower 54g: 164 ft. (50m) @ 54Mbps, 492.1 ft. (150m) @ 18Mbps

System Requirements

- PC-compatible laptop with one available PCMCIA slot
- Windows® 98, 2000, Me, XP

Package Contents

- Belkin 54g Wireless Notebook Network Card
- Quick Installation Guide
- Installation Software CD
- User Manual

KNOWING YOUR CARD



- (a) **Power LED**
When the Card receives power, this light will be on.
- (b) **Link LED**
When the Card has a link to a wireless network, the light will be solid.
When not linked to a wireless network, the light will slowly flash.
- (c) **Card Connector**
This is the side of the Card that fits into the PCMCIA slot of your laptop
- (d) **Antenna**

INSTALLING AND SETTING UP THE CARD

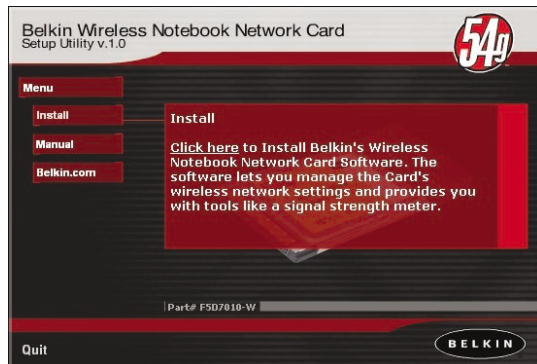
Installing your Card is done in three easy steps.

1. Install the software FIRST. If you plug your Card into your laptop before you install the software, it will not work.
2. Plug the Card into your laptop.
3. Let Windows operating system finish installing the Card.

Note: Install the software first before you install the card into your notebook.

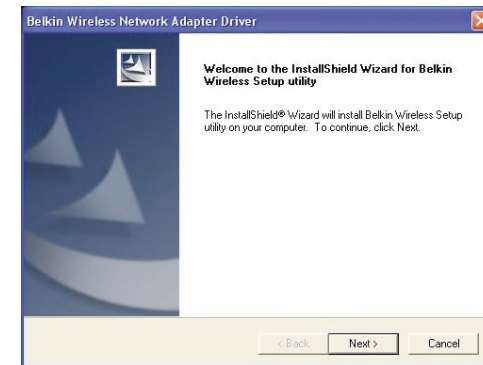
Software and Driver Installation

1. Insert the CD into your CD-ROM drive.
2. The Belkin Wireless Notebook Network Card Setup Utility screen will automatically appear. If it does not appear within 15-20 seconds, then select your CD-ROM drive and double-click on the folder named "Files". Next double-click on the icon named "F5D7010W_UTILILITY.exe".
3. In the menu window, drag your mouse over the "Install" button then select "Click here" to start the software installation program.

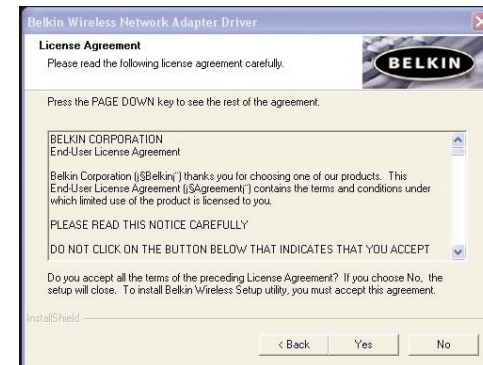


INSTALLING AND SETTING UP THE CARD

4. The installer will start. If you are using Windows XP, it is recommended that you use the Belkin Wireless Notebook Network Card Utility to manage the Card's wireless settings. If you want to use Windows XP to manage the Card, check "Use the Windows XP Wireless Network Connection Utility". Instructions on how to use Windows XP's Connection Utility are available from Microsoft. Click "Next" to continue.

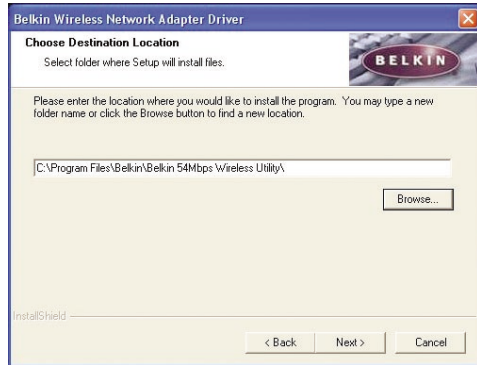


5. Accept the Belkin Software License Agreement by clicking the "YES" button.

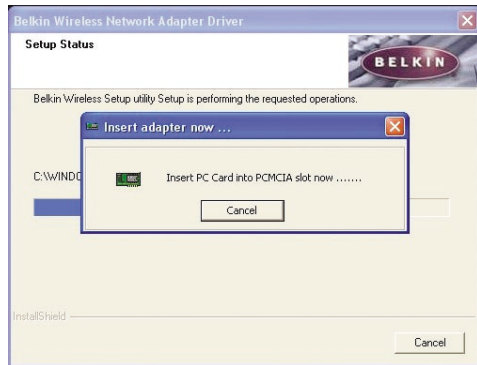


INSTALLING AND SETTING UP THE CARD

6. Select a folder where you would like to install the program files. It is recommended that you use the default folder "C:\Program Files\Belkin\Belkin 54Mbps Wireless Utility". Click "Next" to install the files.



7. During the install process, you will be prompted to insert your Card. Insert the Card, label side UP, into your computer's PCMCIA slot firmly until it stops. The power light on the top will turn on when it is inserted properly.



INSTALLING AND SETTING UP THE CARD

8. After the software installation is complete, click "Finish". You are now ready to install the Wireless LAN notebook adapter hardware.



9. After connecting your Card, Windows will detect that new hardware has been installed. Depending on which version of Windows you are using, a window similar to the one pictured below will appear. Select the option that will automatically install the software.

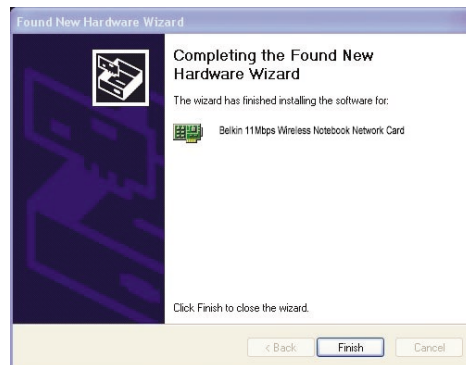


INSTALLING AND SETTING UP THE CARD

10. If you are using Windows 2000 or Windows XP, you may see a screen similar to the one below. This does not mean there is a problem. Select "Continue Anyway".

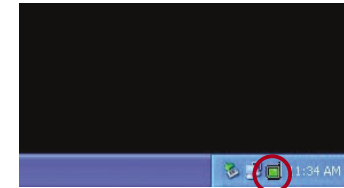


11. If you are using Windows 98 or Me, you will be asked to restart your computer. Select "Restart". If you are using Windows 2000 or XP, you will see a window similar to the one below. Click "Finish".



INSTALLING AND SETTING UP THE CARD

12. When the installation is complete, a small icon in your system tray (bottom right corner of most screens) will appear. This is your shortcut to the Belkin WLAN Monitor. It also indicates the status of your connection.



- Green Icon: Connected to a wireless network, good connection
Yellow Icon: Connected to a wireless network, fair connection
Red Icon: No connection to a wireless network

Note: The Wireless LAN Utility icon will also appear in your Control Panel. To open the Wireless LAN Utility, double-click on this icon.

INSTALLING AND SETTING UP THE CARD

Connecting to your Wireless Network

If you already have a wireless router or an access point in your home or office, the Card will automatically attempt to connect to your wireless network. In most cases, the Card will be able to connect to your network automatically. If your wireless network is using encryption, you will need to set the encryption settings of your Card to match that of your wireless network. For information about configuring your Card, see the next section in this manual.

Uninstalling the Software and Drivers

If you need to remove the software and drivers for any reason, you can easily accomplish this in one of two ways. You can insert the software CD and click on the "Uninstall" option in the menu, or you can go to the Windows Control Panel and select the "Add/Remove Programs" option. The Belkin Wizard will walk you through the removal process.

USING THE BELKIN WIRELESS LAN CONFIGURATION UTILITY

Proceed with the following instructions for configuring your network profiles. The instructions explain how to open the Utility and how to use it to configure a network profile.

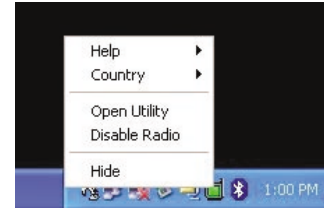
When you launch the Wireless LAN Utility (the Utility), you will be presented with the "Connect to Wireless Network" screen.

The following small icon will also be present in your system tray.



Once installed, the Wireless LAN Utility will automatically display when Windows boots up.

The Utility can be set to always show up in your system tray. You can hide the icon if you right-click on it in your system tray. Although no icon will be displayed, your preferred network will continue to be managed by the Card. The system tray icon can be re-enabled from the Wireless LAN Configuration Utility, available from the Control Panel.



Single-clicking on the icon in the system tray will open the window.

Note: You may double-click on the Utility icon on your system tray to go directly to the "Advanced Configuration" window.

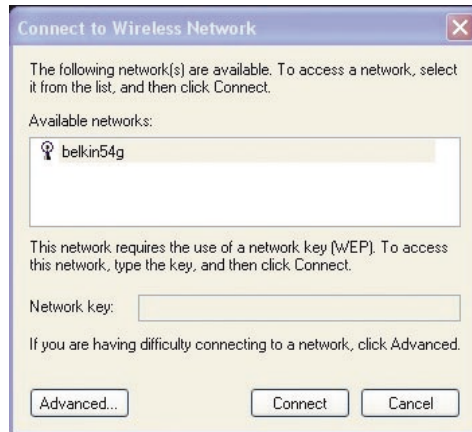
USING THE BELKIN WIRELESS LAN CONFIGURATION UTILITY

The Utility will automatically detect all the 802.11b and 54g wireless networks in the area. Select an available listed network and click on the “Connect” button to connect to that network.

If the wireless network you want to connect with has WEP encryption enabled, the “Network key” text box will be active. Type the network key for that network to connect.

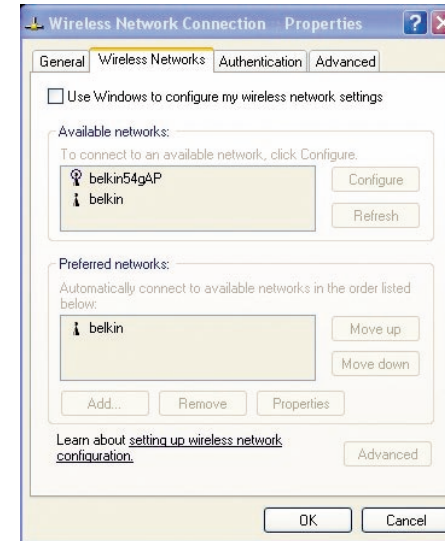
Click “Cancel” to exit.

The “Advanced” button will allow you to view and configure more options of your Card.



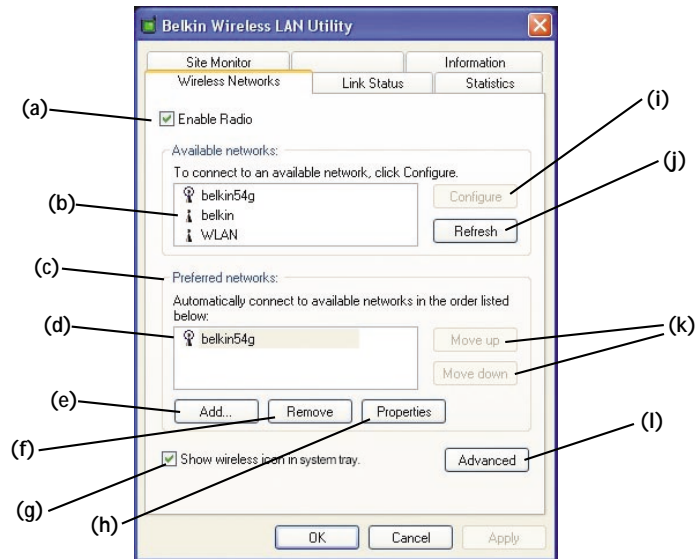
USING THE BELKIN WIRELESS LAN CONFIGURATION UTILITY

Note: Under Windows XP, clicking on the “Advanced” button for the first time will display the following window. The “Use Windows to configure my wireless network settings” option will be enabled by default. Click on the check box to disable it and use the Belkin Wireless Network Utility instead.



USING THE BELKIN WIRELESS LAN CONFIGURATION UTILITY

The Wireless Networks Tab



(a) Enable Radio

Use this option to toggle your wireless network radio ON or OFF. You may want to turn the radio off while in airplanes or to conserve the battery life of your mobile computer. When the radio is disabled, the power LED on your Card will turn off and the system tray wireless network icon will be depicted with an "X".

(b) Available Networks

This displays a list of all available wireless networks in your area. Select a network by clicking on the network name or click on the "Refresh" (j) button to rescan the area for available wireless networks to connect to.

Once you select a network, you can click on the "Configure" (i) button. Click "OK" in the "Wireless Network Properties" box. The network name and icon will appear at the top of the "Preferred Networks" (c) list. Wait up to one minute for the network connection to be made. Your computer is connected to the selected network when you see a blue bubble on top of the icon for that network.

USING THE BELKIN WIRELESS LAN UTILITY

(c) Preferred Networks

Displays a list of the networks that you have configured. You may rank the networks by selecting the network name in the "Preferred Networks" list then clicking on the "Move UP" and "Move Down" buttons. Networks appearing higher on the list will be preferred over networks listed lower on the list. If a preferred network is unavailable, the Card will attempt to connect to the next available network on the list.

Note: You must click on the "Apply" button before any changes take into effect.

(d) Preferred Network

The blue bubble on top of the icon for that network specifies that you are currently connected to that network.

(e, f) Add, Remove

You may "Add" (e) and "Remove" (f) networks from the Preferred Networks list by using these buttons.

(g) System Tray Icon

Check this box so that the wireless icon appears on your system tray.

(h) Properties

To check the properties and WEP settings of the preferred network, select a network then click on the "Properties" button.

USING THE BELKIN WIRELESS LAN UTILITY

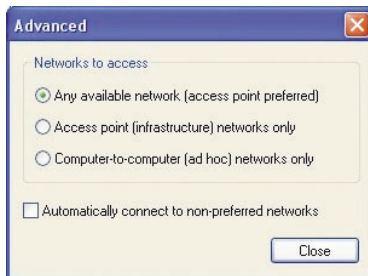
(I) Advanced

Allows you to filter the type of networks you want to connect to.

Any Available Network: When this option is selected, the Card will attempt to connect to any available network in the area. Access points will be preferred networks over ad-hoc networks.

Access Point Networks Only: When this option is selected, the Card will attempt to connect to any available access point in the area. Ad-hoc networks will be excluded from the list of available networks when this option is selected.

Computer-to-Computer Networks Only: When this option is selected, the Card will attempt to connect to any available ad-hoc network in the area. Access points will be excluded from the list of available networks when this option is selected.

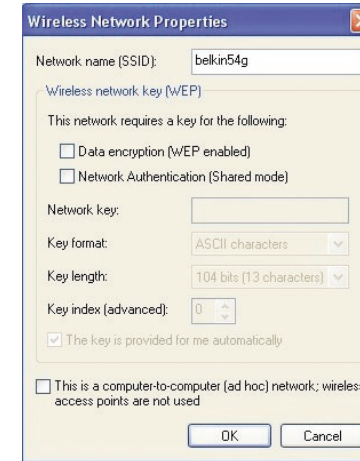


USING THE BELKIN WIRELESS LAN UTILITY

Encryption

To configure a profile for a listed network that requires a WEP key:

1. After opening the Utility, select the network from the "Available networks" list and click "Configure".



2. Select the "Data encryption (WEP enabled)" box.
3. Clear the "The key is provided for me automatically" box.
4. Type the network key in the "Network key" box.

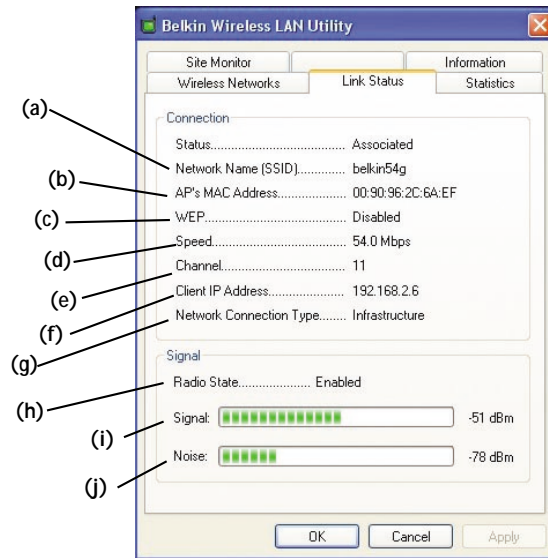
Note: You do not need to select the "Key format" or the "Key length" before typing the network key. These settings automatically change to the appropriate setting as you type the network key.

5. Click "OK".

Note: You must click on the "Apply" button before any changes take into effect.

USING THE BELKIN WIRELESS LAN UTILITY

The Link Status Tab



(a) SSID

The SSID is the wireless network name. This field shows the current SSID with which the Card is associated. The Card will automatically look for any wireless network in the area. To connect to a specific wireless network, you can manually select the SSID of the known wireless network in the Wireless Networks tab.

(b) MAC Address

Shows the MAC address of the wireless network that you are connected to.

(c) WEP

Shows whether the network you are associated with has WEP encryption enabled or disabled.

(d) Speed

Displays the data rate of the current connection.

USING THE BELKIN WIRELESS LAN UTILITY

(e) Channel

Shows the current channel the Card is operating on. When operating in Infrastructure mode, the channel is set automatically by the access point or wireless router that the Card is connected to. You cannot change the channels in Infrastructure mode. In Ad-Hoc mode, the channel can be set manually.

(f) Client IP Address

Shows the IP address of the your wireless client. The IP address is obtained automatically by default. You may set the IP address manually through Windows Networking Properties.

(g) Network Connection Type

Shows the current wireless mode the Card is operating in. There are two operating modes: Infrastructure and Ad-Hoc. Infrastructure is the most common mode to operate in. Infrastructure mode is used when connecting your PC to a wireless access point or to a wireless router. Ad-Hoc mode is used to connect two or more computers together without the use of an access point or wireless router.

(h) Radio State

Shows whether the IP address of your wireless client is enabled or disabled. The IP address is obtained automatically by default. You may set the IP address manually through Windows Networking Properties.

(i) Signal Strength

Displays the strength of the wireless signal from 0 to 100%. The closer to 100%, the better the signal strength is. The closer you are to a wireless router or access point, the stronger the signal should be.

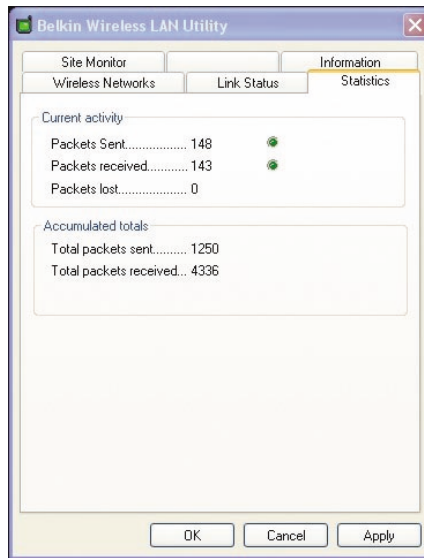
(j) Link Quality (Noise)

Displays the amount of radio interference in the environment. Lower noise ratings are optimal.

USING THE BELKIN WIRELESS LAN UTILITY

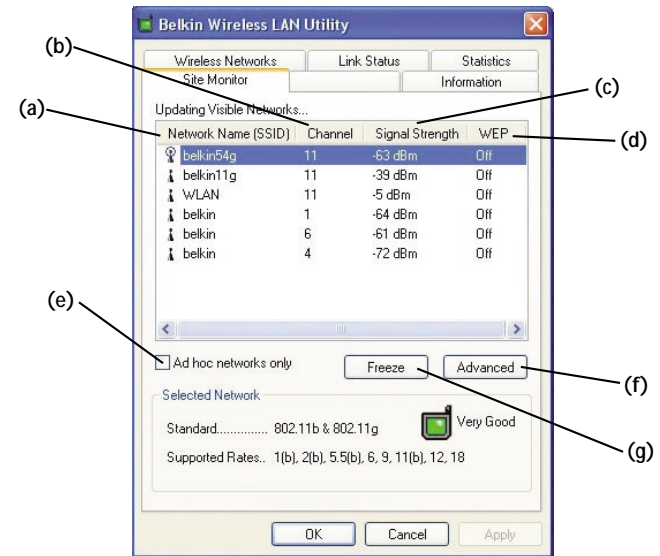
The Statistics Tab

The Statistics tab shows you how much data has been sent and received and if any errors occurred. This screen is mostly for diagnostics. Note that the number of data packets lost is recorded. A large number of lost data packets may indicate that there is a problem or interference in your area.



The Site Survey Tab

Clicking on the Site Survey tab will display a list of all available access points in your area. The following information about each is displayed:



(a) SSID

The Service Set Identifier (wireless network name) of the access point.

(b) Channel Number

The current operating channel of the access point.

(c) Signal Strength

The signal strength of the related access point.

USING THE BELKIN WIRELESS LAN UTILITY

(d) WEP

Will display "Off" when encryption is disabled, "64-bit" when 64-bit encryption is enabled, and "128-bit" when 128-bit encryption is enabled.

(e) Ad-Hoc Networks Only

Check this box to display available ad-hoc networks only.

(f) Advanced

Displays additional information about the selected network.

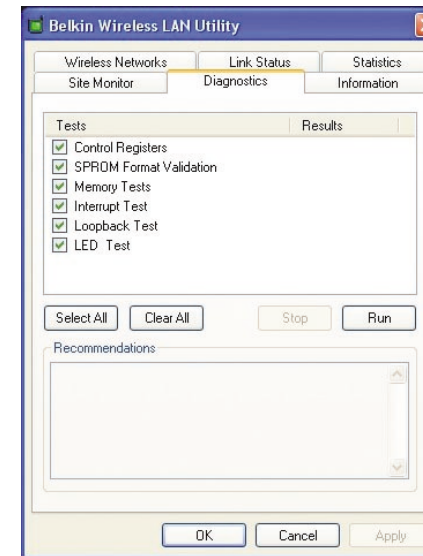
(g) Freeze

Takes a "snapshot" of the signal strength at the time of the site survey. Click again to unfreeze.

USING THE BELKIN WIRELESS LAN UTILITY

Diagnostics Page

This Page allows you to perform several diagnostic tests that are available for your Belkin Wireless Network adapter.



Control Registers

This test verifies the read and write capabilities of the network controller registers by writing various values to the registers and verifying the result. The device driver uses these registers to perform network functions such as sending and receive information. If the test fails, the network adapter may not work properly.

SPROM Format Version

This test verifies the content of the SPROM by reading a portion of the SPROM and computing the checksum. The test fails if the computed checksum is different than the checksum stored in the SPROM.

USING THE BELKIN WIRELESS LAN UTILITY

Memory Tests

This tests verifies that the network controller internal memory is functioning properly. The test writes patterned values to the memory and reading back the results. The test fails if an erroneous value is read back. The network controller will not function without its internal memory.

Interrupt Test

This test verifies that the NDIS driver is able to receive interrupts from the network controller.

Loopback Test

This test verifies that the NDIS driver is able send packets and receive packets from the network controller.

LED Test

This test verifies that your 802.11 wireless networking hardware is functioning correctly.

TROUBLESHOOTING

Cannot Connect to the Network

If your Card appears to be functioning properly but you cannot connect to the network, the problem may be that there is a mismatch between the "Network name (SSID)" and "Wireless network key (WEP)" settings in your wireless network properties and the name and WEP key of the network you are trying to connect to. The network name and WEP key are case-sensitive. Verify that the spelling and case of these parameters are correct and that the settings are exactly the same on all computers on the network.

If you have verified that the spelling and case of these parameters are correct and that the settings are exactly the same on all computers on the network and you are still unable to connect to the network, see "Performance and Connectivity Problems".

Problem or Symptom

The computers seem to be communicating, but they do not appear in the "My Computer" window or in the "My Network Places" window.

Possible Solution

Windows 2000 Environment

Verify that "File and Printer Sharing" is enabled on all the computers on your network.

From the desktop, click the "Start" button, go to "Settings", and click "Control Panel".

In Control Panel, double-click the "Network and Dial-up Connections" icon.

In the "Network and Dial-up Connections" window, double-click the "Local Area Connection" icon.

In the "Local Area Connection Status" box, click "Properties".

In the "Local Area Connection Properties" box, verify that the "File and Printer Sharing for Microsoft Networks" check box is selected. If the check box is cleared, select it. If the check box is not present, click "Install". In the "Select Network Component Type" box, select "Service" and click "Add". In the "Select Network Service" box, select "File and Printer Sharing for Microsoft Networks" and click "OK". Close the "Local Area Connection Properties" box.

Close the "Local Area Connection Status" box.

Close the "Network and Dial-up Connections" window.

TROUBLESHOOTING

The computers seem to be communicating, but they do not appear in the “My Computer” window or in the “My Network Places” window. (Cont.)

Windows XP Environment

Verify that “File and Printer Sharing” is enabled on all the computers on your network.

From the desktop, click the “Start” button and click “Control Panel” (if you are looking at Category View, click “Switch to Classic View”).

In Control Panel, double-click the “Network Connections” icon.

In the “LAN or High-Speed Internet” area, right-click “Wireless Network Connection” and click “Properties”.

In the “Wireless Network Connection Properties” box, if the “General” tab is not on top, click the “General” tab.

In the “This connection uses the following items” list, verify that the “File and Printer Sharing for Microsoft Networks” check box is selected. If the check box is cleared, select it. If this item is not present, click “Install”. In the “Select Network Component Type” box, select “Service” and click “Add”. In the “Select Network Service” box, select “File and Printer Sharing for Microsoft Networks” and click “OK”. Close the “Wireless Network Connection Properties” box.

Close the “Network Connections” window.

Data transfer is sometimes very slow.

Microwave ovens and some cordless phones operate at the same radio frequency as the wireless network cards. When the microwave oven or cordless phone is in use, it interferes with the wireless network. Therefore, keep computers with the Card at least 20 feet away from your microwave oven and any cordless telephone that operates at a frequency of 2.4GHz.

TROUBLESHOOTING

Data transfer is always very slow.

Some homes and most offices are steel-framed structures. The steel in such buildings may interfere with your network’s radio signals, thus causing a slowdown in the data transmission rate. Try moving your computers to different locations in the building to see if performance improves.

Computers are not communicating with the network.

If your network has an access point, check all cables and make sure the power LED on the front of the access point is on.

In Windows 2000, I get the following error message: “Medium cable disconnected”. Also, there is a red X on my network icon in the system tray.

This indicates that your computer is not properly configured to connect to the network. Verify that all of the wireless network properties settings are correct. Also, make sure that your computer is receiving a good signal from the access point.

Network performance is really slow when the system is connected to both a wireless network and an active Ethernet port.

This condition occurs if your computer has an active Ethernet port while your Card is still active and connected to an access point. This happens because Windows 2000 must now handle two active network connections. You need to either disconnect the Ethernet cable from your computer, or disable the radio on your Card. To disable the radio on your Card, right-click on the Belkin Wireless Utility icon in the system tray and click “Disable Radio”. *Note: The radio is not automatically enabled when your computer starts up again.* To enable the radio, right-click on the Belkin Wireless Utility icon and click “Enable Radio”.

Note: For Windows 2000 only.

Technical Support

You can find technical support information at www.networking.belkin.com or www.belkin.com through the tech support area. If you want to contact technical support by phone, please call 800-223-5546.

INFORMATION

FCC Statement

DECLARATION OF CONFORMITY WITH FCC RULES FOR ELECTROMAGNETIC COMPATIBILITY

We, Belkin Corporation, of 501 West Walnut Street, Compton, CA 90220, declare under our sole responsibility that the product,

F5D7010

to which this declaration relates, complies with Part 15 of the FCC Rules. Operation is subject to the following two conditions: (1) this device may not cause harmful interference, and (2) this device must accept any interference received, including interference that may cause undesired operation.

•IMPORTANT NOTE: □

•FCC Radiation Exposure Statement: □

•This equipment complies with FCC radiation exposure limits set forth for an uncontrolled environment. End users must follow the specific operating instructions for satisfying RF exposure compliance. □

•This transmitter must not be co-located or operating in conjunction with any other antenna or transmitter. □

Federal Communications Commission Notice

This equipment has been tested and found to comply with the limits for a Class B digital device, pursuant to Part 15 of the FCC Rules. These limits are designed to provide reasonable protection against harmful interference in a residential installation.

This equipment generates, uses, and can radiate radio frequency energy. If not installed and used in accordance with the instructions, it may cause harmful interference to radio or television reception, which can be determined by turning the equipment off and on, the user is encouraged to try and correct the interference by one or more of the following measures:

- Reorient or relocate the receiving antenna.
- Increase the distance between the equipment and the receiver.
- Connect the equipment to an outlet on a circuit different from that to which the receiver is connected.
- Consult the dealer or an experienced radio/TV technician for help.

Modifications

The FCC requires the user to be notified that any changes or modifications to this device that are not expressly approved by Belkin Components may void the users authority to operate the equipment.

Belkin Corporation declare that F5D7011(Wireless PCMCIA Card) is limited in CH1-CH11 by specified firmware controlled in USA." □

INFORMATION

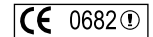
Canada- Industry Canada (IC)

The wireless radio of this device complies with RSS 139 & RSS 210 Industry Canada. This Class B digital complies with Canadian ICES-003.

Cet appareil numérique de la classe B conforme à la norme NMB-003 du Canada.

Europe-European Union Notice

Radio products with the CE 0682 or CE alert marking comply with the R&TTE Directive (1995/5/EC) issued by the Commission of the European Community.



Compliance with this directive implies conformity to the following European Norms (in brackets are the equivalent international standards).

- EN 60950 (IEC60950) – Product Safety
- EN 300 328 Technical requirement for radio equipment
- ETS 300 826 General EMC requirements for radio equipment.



To determine the type of transmitter, check the identification label on your Belkin product.

Products with the CE marking comply with the EMC Directive (89/336/EEC) and the Low Voltage Directive (72/23/EEC) issued by the Commission of the European Community. Compliance with these directives implies conformity to the following European Norms (in brackets are the equivalent international standards).

- EN 55022 (CISPR 22) – Electromagnetic Interference
- EN 55024 (IEC61000-4-2,3,4,5,6,8,11)- Electromagnetic Immunity
- EN 61000-3-2 (IEC610000-3-2) - Power Line Harmonics
- EN 61000-3-3 (IEC610000) – Power Line Flicker
- EN 60950 (IEC60950) – Product Safety



Products that contain the radio transmitter are labeled with CE 0682 or CE alert marking and may also carry the CE logo.

INFORMATION

Belkin Corporation Limited Lifetime Product Warranty

Belkin Corporation warrants this product against defects in materials and workmanship for its lifetime. If a defect is discovered, Belkin will, at its option, repair or replace the product at no charge provided it is returned during the warranty period, with transportation charges prepaid, to the authorized Belkin dealer from whom you purchased the product. Proof of purchase may be required.

This warranty does not apply if the product has been damaged by accident, abuse, misuse, or misapplication; if the product has been modified without the written permission of Belkin; or if any Belkin serial number has been removed or defaced.

THE WARRANTY AND REMEDIES SET FORTH ABOVE ARE EXCLUSIVE IN LIEU OF ALL OTHERS, WHETHER ORAL OR WRITTEN, EXPRESSED OR IMPLIED. BELKIN SPECIFICALLY DISCLAIMS ANY AND ALL IMPLIED WARRANTIES, INCLUDING, WITHOUT LIMITATION, WARRANTIES OF MERCHANTABILITY AND FITNESS FOR A PARTICULAR PURPOSE.

No Belkin dealer, agent, or employee is authorized to make any modification, extension, or addition to this warranty.

BELKIN IS NOT RESPONSIBLE FOR SPECIAL, INCIDENTAL, OR CONSEQUENTIAL DAMAGES RESULTING FROM ANY BREACH OF WARRANTY, OR UNDER ANY OTHER LEGAL THEORY, INCLUDING BUT NOT LIMITED TO, LOST PROFITS, DOWNTIME, GOODWILL, DAMAGE TO OR REPROGRAMMING, OR REPRODUCING ANY PROGRAM OR DATA STORED IN, OR USED WITH, BELKIN PRODUCTS.

Some states do not allow the exclusion or limitation of incidental or consequential damages or exclusions of implied warranties, so the above limitations of exclusions may not apply to you. This warranty gives you specific legal rights, and you may also have other rights that vary from state to state.