

Step 3 | Checking the Connection



3.1 Once you have completed connecting the Router, the Wizard will check the connection to the Router and then go on to determine what type of Internet connection you have.



3.2 User Name and Password Needed
If you have a connection type that requires a user name and a password, the Wizard will ask you to type in your user name and password. If your connection type does not require a user name and password, you will not see this screen.

Your user name and password is provided to you by your Internet Service Provider. If you have to type in a user name and password to connect to the Internet, then type that same user name and password in here. Your user name looks something like “jsmith@myisp.com” or simply “jsmith”. The service name is optional and is very rarely required by your ISP. If you don't know your service name, leave this blank. When you have entered your information, click “Next” to move on.

1

2

3

4

5

6

7

8

9

10

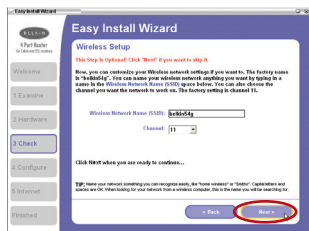
11

12

13

section

Connecting and Configuring Your Router



3.3 Wireless Setup

This Step Is Optional. Click “Next” if you want to skip it.

Using this step, you can customize your wireless network settings if you want to. Follow the steps on the screen to complete this step. Click “Next” to continue.

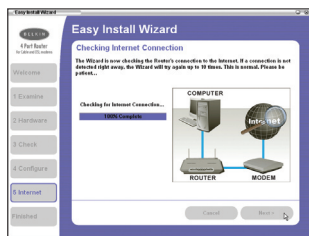
Step 4 | Configuring the Router

The Wizard will now transfer all of the configuration information to the Router. This will take approximately one minute. During this time, do not turn off the Router or computer. The Router will restart itself at the end of this step.



4.1 Checking Internet

The Wizard will now check for an Internet connection. This can take a few minutes. The Wizard may not detect a connection right away. If not, it will retry a number of times. The “Connected” light on the front panel of the Router will flash during this time. Please be patient through this process.



Connecting and Configuring Your Router



4.2 Finished

When the Internet connection is complete, the Wizard will tell you that you are finished. The “Connected” LED on the front of the Router will be solid GREEN, indicating that the Router is now connected to the Internet.

Your Router is now connected to the Internet. Now you can begin surfing the Internet by opening your browser and going to your favorite web page.

Congratulations! You have finished installing your new Belkin Router. You are ready to set up the other computers in your home. You can also add computers to your Router any time you want.

1	
2	
3	
4	section
5	
6	
7	
8	
9	
10	
11	
12	
13	

Configuring and Using the USB Print Server

Connecting your printer to the Router's print server

Please closely follow the directions to set up your printer.

Before you start

Install the printer's drivers and software on each computer from which you plan to print. This enables the PC to print to the networked printer (printer that is attached to your USB Print Server). Every manufacturer ships its printer with a driver and, usually, printing software. In some cases, while installing the drivers and software for your printer, you may be required to connect the PC directly to the printer in order to complete the installation. This varies according to manufacturer. You must also install the Belkin Printer Port on each of the computers you want to print from. This may be done using the Printer Server Setup Wizard, or can be done manually.

Start

1. Insert the CD into your CD-ROM drive. Within 15 seconds, you should see the installation menu on the screen. If the menu does not appear within 15 seconds, select your CD-ROM drive and view the contents of the drive. Double-click on the file named "Start.exe".
2. From the menu, click on "Run Print Server Setup Wizard". This will open the Print Server Setup Wizard menu.



Configuring and Using the USB Print Server

1
2
3
4
5 section
6
7
8
9
10
11
12
13

3. On the Wizard menu, drag your mouse over the “Run Wizard” button and click the words “Click Here” to start the Wizard.



4. The first screen of the Wizard appears. Be sure that you have installed your printer's drivers and software on the PCs from which you plan to print. Click “Next”.

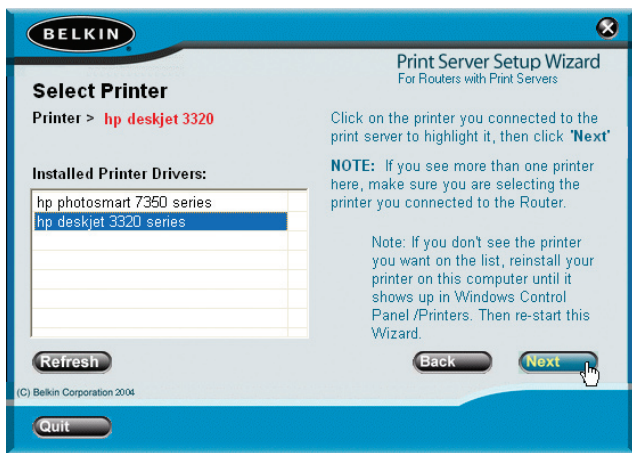


Configuring and Using the USB Print Server

- Next, make sure the Router is ON. Make sure the printer is ON. Plug in the USB cable that is connected to the printer to the USB port on the rear of the Router. The USB port on the Router is color-coded purple. Click "Next".



- The Wizard will scan for and locate the Print Server in the Router. Next, a list of the printers installed on the computer will appear. Click once on the name of the printer that is connected to the Router to highlight it. Click "Next".



Configuring and Using the USB Print Server

1

2

3

4

5

6

7

8

9

10

11

12

13

section

7. The next screen that appears will allow you to test print. Click on the “Print Test Page” button. When your test page is finished printing, click “Next”.



8. You are now finished setting up your computer to print to the Print Server. Next, run this Wizard on the other computers on your network from which you wish to print to this printer.



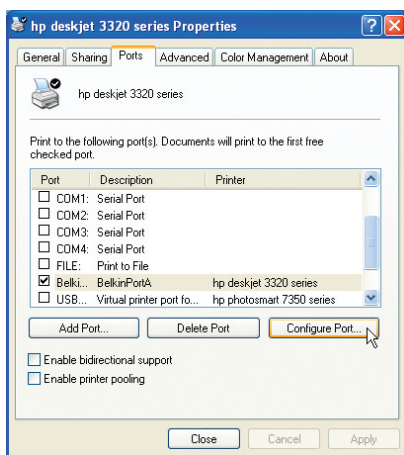
Configuring and Using the USB Print Server

Manually installing the print server port

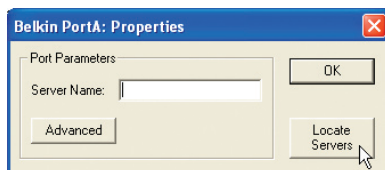
Advanced users can manually install the Belkin Printer Port without using the Wizard. To do this, from the Installer menu, click “Install Printer Port Only” to skip the Wizard. Belkin has also included a standalone installer on the CD. From the CD, double-click on the file called “instportA.exe”.

Configuring Computers to Print to the Print Server

1. Install Printer Port Software on each computer by running “instportA.exe” from the CD or by using the Wizard.
2. Configure the Belkin Port Monitor on each computer’s printer driver to point to the Router’s Print Server as follows:
 - a. In Windows, select the printer’s properties for the printer connected to the Print Server and select the “Port” tab, select the Belkin port, and click “Configure Port...”

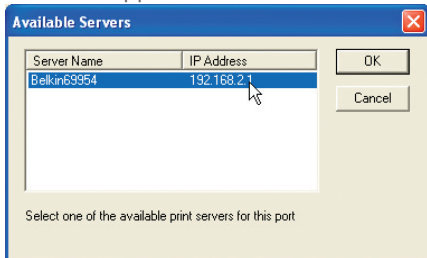


- b. On the “Belkin PortA: Properties” window, click “Locate Servers”.

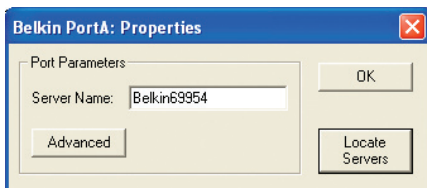


Configuring and Using the USB Print Server

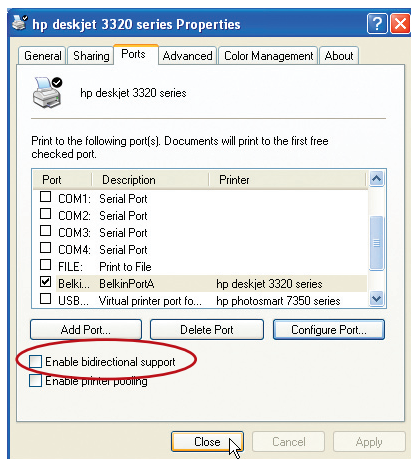
- c. On the “Available Servers” window, your Router’s print server name will appear. Select the Print Server. Click “OK” to close.



- d. On the “Belkin Port A: Properties” window, the name of the Print Server will appear. Click “OK” to close.



- e. On the Ports tab, uncheck the box next to “Enable bidirectional support” if currently checked. Click “Apply”.

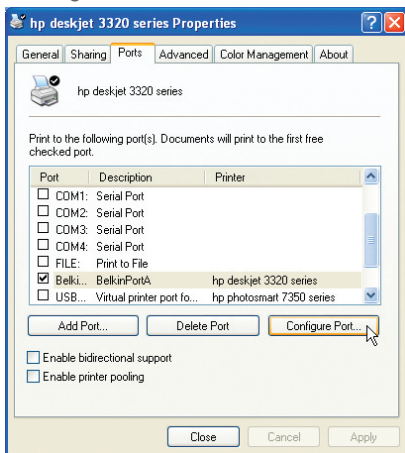


- f. Click “Close” to close the window.

Configuring and Using the USB Print Server

Uninstalling the print server port

1. In Windows, select the printer's properties for the printer connected to the Print Server and select the "Port" tab, select the Belkin port, and click "Configure Port...".



2. Select a different port from the list of available ports. You must select a different port before you can remove the Belkin port.
3. From the Installer menu, click "Remove Printer Port" to uninstall the printer port. Belkin has also provided an uninstaller application that will remove the Belkin printer port from the PC. From the CD, double-click on the file called "rmvportA.exe". This will remove the printer port.

