

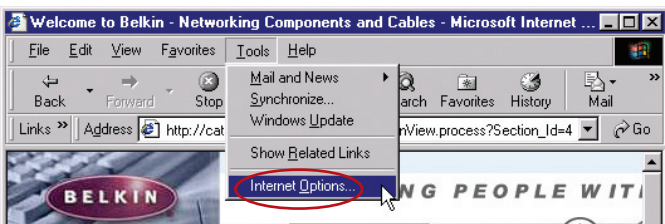
Recommended Web Browser Settings

1
2
3
4
5
6
7
8
9 section
10
11
12
13

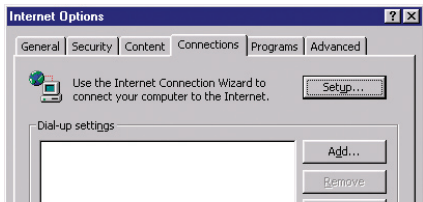
In most cases, you will not need to make any changes to your web browser's settings. If you are having trouble accessing the Internet or the advanced web-based user interface, then change your browser's settings to the recommended settings in this section.

Internet Explorer 4.0 or Higher

1. Start your web browser. Select "Tools" then "Internet Options".



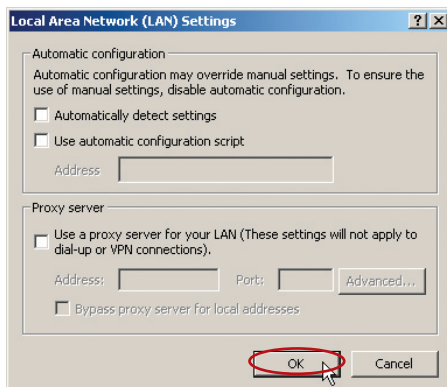
2. In the "Internet Options" screen, there are three selections: "Never dial a connection", "Dial whenever a network connection is not present", and "Always dial my default connection". If you can make a selection, select "Never dial a connection". If you cannot make a selection, go to the next step.



3. Under the "Internet Options" screen, click on "Connections" and select "LAN Settings...".

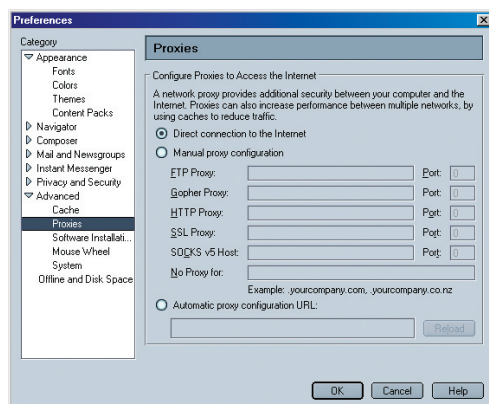
Recommended Web Browser Settings

4. Make sure there are no check marks next to any of the displayed options: “Automatically detect settings”, “Use automatic configuration script”, and “Use a proxy server”. Click “OK”. Then click “OK” again in the “Internet Options” page.



Netscape Navigator 4.0 or Higher

1. Start Netscape. Click on “Edit” then “Preferences”.
2. In the “Preferences” window, click on “Advanced” then select “Proxies”. In the “Proxies” window, select “Direct connection to the Internet”.



Using your Router with AOL Broadband

How to set up your network to operate with AOL® for Broadband and your new Belkin Router

There are two types of AOL connections available—either AOL DSL or AOL Cable. A third service is called AOL BYOA (Bring Your Own Access). This is used along with an existing broadband connection, supplied by your Internet Service Provider (ISP). If you have AOL DSL, please refer to “Directions for AOL DSL Users” below for setup instructions. If you have either AOL Cable or the AOL BYOA service, please go to the “Directions for AOL Cable Users” section of this guide, on page 104.

Directions for AOL DSL Users

STEP 1: Create AOL screen names for the Router and for each computer that will be using your AOL service.

STEP 2: Configure the Router for AOL for Broadband.

STEP 3: Configure your computers with the new AOL screen names you just created.

Step 1 | Creating new AOL screen names

Note: Your AOL connections must be set to operate on the TCP/IP standard. If you have designated another protocol, reset them to TCP/IP before proceeding.

1. If your Router is currently connected to the network, remove it from the network and connect it directly to your broadband modem. Then, log on to AOL as you normally do.
2. Log on to your AOL master account.

1

2

3

4

5

6

7

8

9

10

section

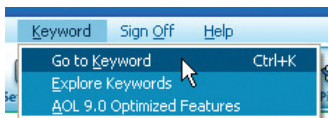
11

12

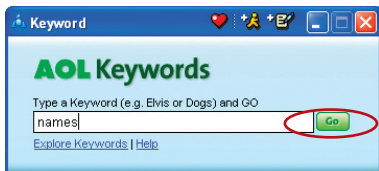
13

Using your Router with AOL Broadband

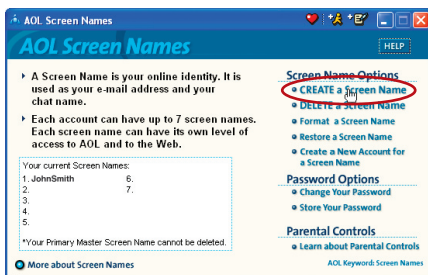
3. Perform a keyword search on “names” by clicking “Keyword”, and then “Go to Keyword”.



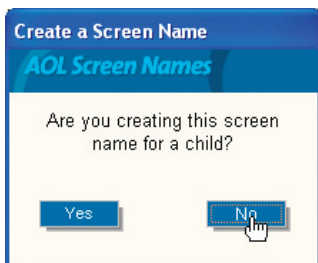
4. In the “Keyword” window, type in “names” then click “Go”.



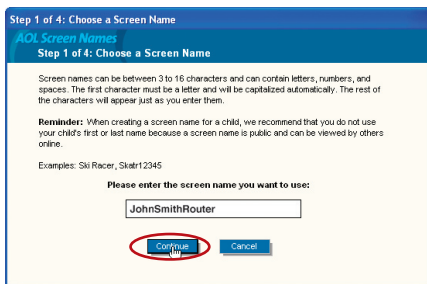
5. You will see the “AOL Screen Names” window. Click “CREATE a Screen Name”.



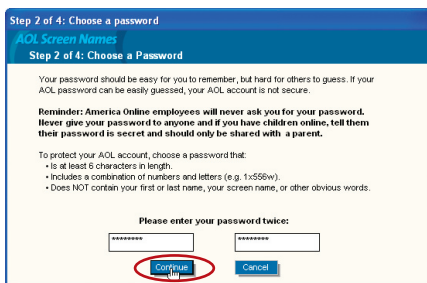
6. A window will appear that asks whether the screen name is for a child. If you are creating the screen name for the Router, click “Yes” or “No” (it doesn’t matter which you select). If you are creating a screen name for an additional computer, select the appropriate answer.



7. The “Choose a Screen Name” window will appear. Type in a screen name, and click “Continue”. If this screen name is for the Router, the name you choose should be something like your master screen name followed by the word Router. For instance “JohnSmithRouter”. If the screen name is for a computer, type in the screen name of the computer for which you are creating this screen name. Click “Continue”.

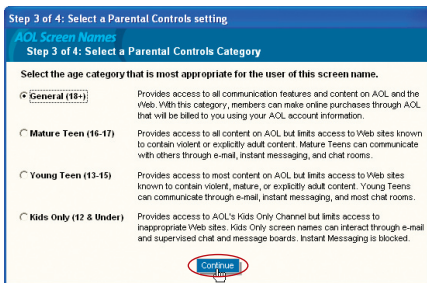


8. The “Choose a password” screen will appear. Enter the password for this screen name twice, and click “Continue”.

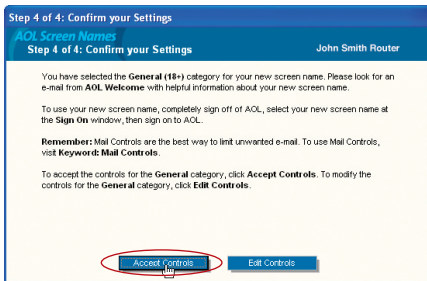


Using your Router with AOL Broadband

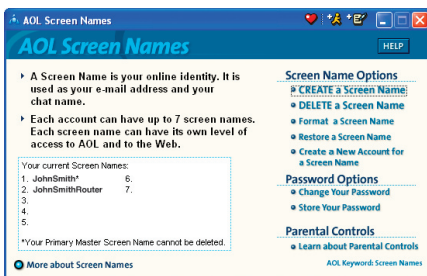
9. The “Select a Parental Controls setting” window will appear. If this screen name is for the Router, choose any one of the settings (it doesn’t matter which). If this screen name is for a computer, choose the desired setting and click “Continue”.



10. The “Confirm your Settings” window will appear. Select “Accept Controls”.



11. The “AOL Screen Names” window appears. This window will include all the screen names you have created to this point.

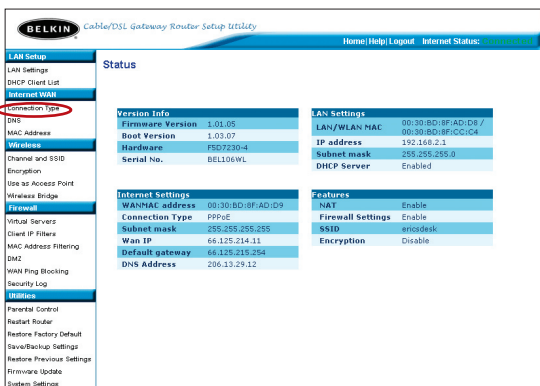


12. Repeat steps 1-11 to add an additional screen name for each computer that will be using AOL and that will be connected to the Router. When you are finished adding screen names, go to Step 2.

Step 2 | Configuring the Router

Follow this step only if you use AOL DSL. This procedure is for Belkin Router models F5D5231-4, F5D6231-4, F5D7230-4, and F5D7231-4.

1. Connect your Router to your network per the instructions in your User Manual.
2. Open your Web browser.
3. In the address bar of your browser, type `http://192.168.2.1` and click “Go”. You will be directed to the Router’s home page. Click on “Connection Type” in the left-hand column under “Internet WAN” heading.



4. You will see the Router’s login page. Leave the password field blank and click “Submit”.
5. You will now see the “Connection Type” page. Select “PPPoE” and click “Next”. You will now see the PPPoE setup page.
6. In the “User Name” field, type in the screen name that you created for your Router (1).

Using your Router > with AOL Broadband

7. In the password fields, type in the password you created for the Router's screen name [2].

BELKIN Cable/DSL Gateway Router Setup Utility

Home | Help | Logout | Internet Status: **Connected**

WAN > Connection Type > PPPoE

To enter your PPPoE settings, type in your information below and click "Apply changes". More Info

User Name >

Password >

Retype Password >

Service Name (Optional) >

MTU (1440-1454) >

Do not make changes to the MTU setting unless your ISP specifically requires a different setting than 1454. More Info

Disconnect after minutes of no activity.

More Info

Left-hand menu:

- LAN Setup
- LAN Settings
- DHCP Client List
- Select WAN**
- Connection Type
- DNS
- MAC Address
- Wireless**
- Channel and SSID
- Encryption
- Use as Access Point
- Wireless Bridge
- Firewall
- Virtual Servers
- Client IP Filters
- MAC Address Filtering
- DMZ
- WAN Ping Blocking
- Security Log
- Statistics
- Parental Control
- Restart Router
- Restore Factory Default
- Save/Backup Settings
- Restore Previous Settings
- Firmware Update

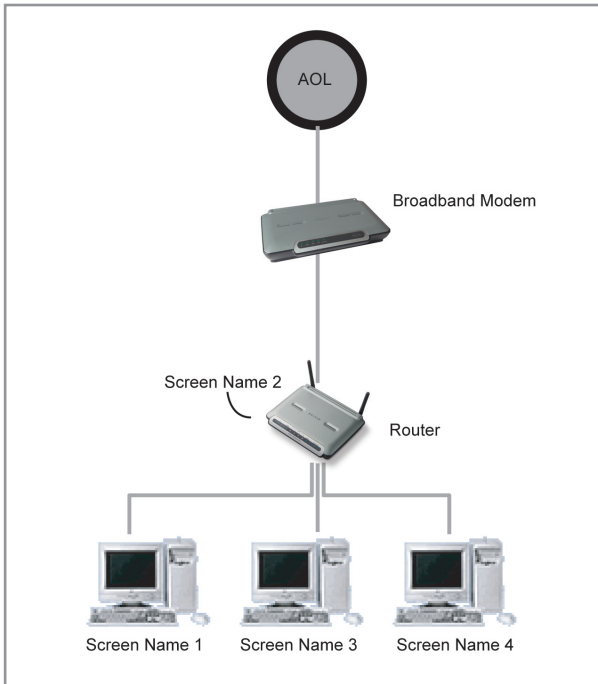
8. Leave the "Service Name" field blank [3]. Do not change the MTU setting.
9. Click on "Apply Changes" [4].
10. Click on the Home link at the top of the screen. The Internet Status indicator should read "Connected" [5].
11. Go to Step 3.

Using your Router with AOL Broadband

Step 3 | Configure your computers with the AOL screen names you just created

This step consists of installing the AOL software on each computer and configuring it to use one of the screen names you created in Step 1. Remember that each computer **MUST** use a different screen name. For help installing and configuring the AOL software, contact AOL's technical support department.

Network Configuration



1

2

3

4

5

6

7

8

9

10

11

12

13

section

Using your Router with AOL Broadband

AOL Cable or AOL BYOA (Bring Your Own Access) Users Directions

AOL Cable users need to follow these directions. If you have AOL DSL, go to the “Directions for AOL DSL” section beginning on page 97.

AOL Cable Users STEP 1:

Create AOL screen names for each computer that will be using your AOL service.

AOL DSL Users STEP 2:

Configure your computers with the new AOL screen names you just created.

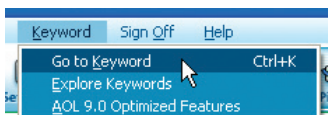
AOL Cable or AOL BYOA Users

Step 1 | Creating new AOL screen names

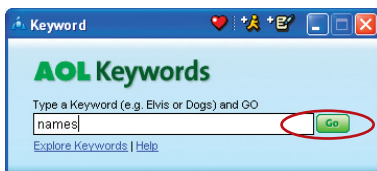
Note: Your AOL connections must be set to operate on the TCP/IP standard. If you have designated another protocol, reset them to TCP/IP before proceeding.

1. Connect the Router to the network per the instructions in your User Manual. Once the Router is installed properly, go to the next step.
2. Log on to your AOL master account.

3. Perform a keyword search on “names” by clicking “Keyword”, and then “Go to Keyword”.



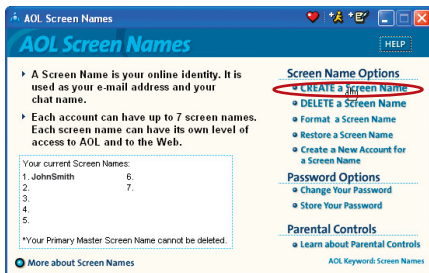
4. In the “Keyword” window, type in “names” then click “Go”.



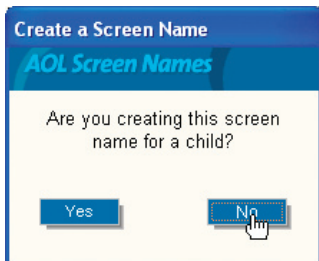
Using your Router with AOL Broadband

1
2
3
4
5
6
7
8
9
10 section
11
12
13

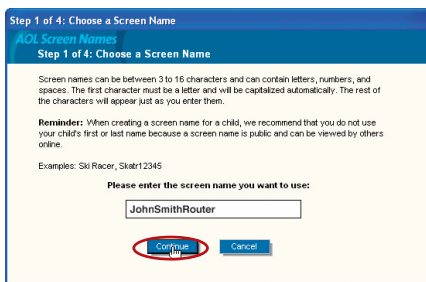
5. You should see the “AOL Screen Names” window. Click “CREATE a Screen Name”.



6. A window will appear that asks whether the screen name is for a child. Click “Yes” or “No” to answer.



7. The “Choose a Screen Name” window will appear. Type in the screen name of the computer for which you are creating this screen name. Click “Continue”.



Using your Router with AOL Broadband

8. The “Choose a password” screen will appear. Enter the password for this screen name twice, and click “Continue”.

Step 2 of 4: Choose a password

AOL Screen Names

Step 2 of 4: Choose a Password

Your password should be easy for you to remember, but hard for others to guess. If your AOL password can be easily guessed, your AOL account is not secure.

Reminder: America Online employees will never ask you for your password. Never give your password to anyone and if you have children online, tell them their password is secret and should only be shared with a parent.

To protect your AOL account, choose a password that:

- Is at least 8 characters in length.
- Includes a combination of numbers and letters (e.g. 1x56Bw).
- Does NOT contain your first or last name, your screen name, or other obvious words.

Please enter your password twice:

***** *****

9. The “Select a Parental Controls setting” window will appear. Choose the appropriate setting for this screen name. Click “Continue”.

Step 3 of 4: Select a Parental Controls setting

AOL Screen Names

Step 3 of 4: Select a Parental Controls Category

Select the age category that is most appropriate for the user of this screen name.

General (18+) Provides access to all communication features and content on AOL and the Web. With this category, members can make online purchases through AOL that will be billed to you using your AOL account information.

Mature Teen (16-17) Provides access to all content on AOL, but limits access to Web sites known to contain violent or explicitly adult content. Mature Teens can communicate with others through e-mail, instant messaging, and chat rooms.

Young Teen (13-15) Provides access to most content on AOL, but limits access to Web sites known to contain violent, mature, or explicitly adult content. Young Teens can communicate through e-mail, instant messaging, and most chat rooms.

Kids Only (12 & Under) Provides access to AOL's Kids Only Channel but limits access to inappropriate Web sites. Kids Only screen names can interact through e-mail and supervised chat and message boards. Instant Messaging is blocked.

10. The “Confirm your Settings” window will appear. Select “Accept Controls”.

Step 4 of 4: Confirm your Settings

AOL Screen Names

Step 4 of 4: Confirm your Settings John Smith Router

You have selected the **General (18+)** category for your new screen name. Please look for an e-mail from AOL Welcome with helpful information about your new screen name.

To use your new screen name, completely sign off of AOL, select your new screen name at the **Sign On** window, then sign on to AOL.

Remember: Mail Controls are the best way to limit unwanted e-mail. To use Mail Controls, visit **Keyword: Mail Controls**.

To accept the controls for the **General** category, click **Accept Controls**. To modify the controls for the **General** category, click **Edit Controls**.