

**BELKIN.**

## G Plus MIMO Wireless Notebook Card

## Quick Installation Guide

### Setup Overview

Step

1

Insert CD and run installer

Step

2

Insert Card into notebook

Step

3

Finish installer, run utility

Step

4

Connect to a wireless network



### Step 1 – Insert CD and run installer

Insert the setup disc into your notebook's CD drive. When the installer appears, click on "Next".

The installer may take 15–20 seconds to appear. If it does not appear by then, find the "My Computer" icon on your desktop and double-click it; then, double-click the icon for the CD. Open the "Files" folder and double-click "Setup.exe".

The installer loads the necessary drivers onto your computer. Click "Next" on each screen as prompted. On the last screen, click "Finish" to close the installer.

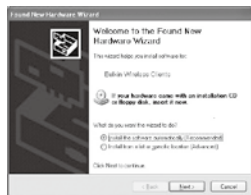
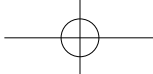
If at any time during the install a warning appears that the software has not passed Windows logo testing, it is safe to click on the "Continue anyway" button to proceed. This software is designed to run on Windows.



### Step 2 – When prompted, insert the Card

During the install process, you will be prompted to insert your Card. First make sure the Card's label side is UP.

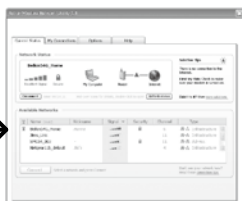
Insert it into your computer's CardBus slot, pushing it firmly until it stops. The power light on the top of the Card will turn on.



### Step 3 – Go through hardware wizard

The Windows “Found New Hardware” wizard appears. Select the “Install the software automatically (Recommended)” option and click “Next” to proceed.

On the next screen, click “Finish” to close the wizard. Installation is now complete.



### Step 4 – Connect to a wireless network

A small signal-indicator icon appears in your system tray (bottom right corner of most screens). Double-click on it to bring up the Wireless Client Utility.

Look in the “Available Networks” list for the router or network to which you’d like to connect, and double-click on its name.

### Support

Belkin provides free technical support via phone and the Web. However, we encourage you to attempt Steps 1 and 2 before contacting us. The Setup Assistant has built-in intelligence to help diagnose and fix common problems.

If you try this and still have trouble, please contact Belkin Support.

North America <http://www.belkin.com>  
Click on Support Center >  
Networking Support  
1 (800) 2BELKIN, ext. 2263  
Available 24/7

UK <http://www.belkin.com/uk/>  
Click on Support Centre >  
Networking Support  
00 800 223 55 460  
Available 24/7

Australia <http://www.belkin.com/au/>  
Click on Support Centre  
1 800 BELKIN  
Available Monday–Friday  
08:00–20:00  
Sydney time zone,  
closed public holidays

New Zealand <http://www.belkin.com/au/>  
Click on Support Centre  
0 800 BELKIN  
Available Monday–Friday  
08:00–20:00  
Sydney time zone,  
closed public holidays

© 2006 Belkin Corporation. All rights reserved. All trade names are registered trademarks of respective manufacturers listed.

P74883-B  
F5D9010

Caution: □ □

1. The device complies with Part 15 of the FCC rules.

Operation is subject to the following two conditions: □ □

(1) This device may not cause harmful interference. □ □

(2) This device must accept any interference received, including interference that may cause undesired operation. □ □

2. "This device has been tested for compliance with FCC RF Exposure (SAR) limits in a typical laptop configuration with a PCMCIA slot on either the right or left side of the laptop and can be used in laptop computers with substantially similar physical dimensions, construction, and electrical and RF characteristics.

3. This Transmitter must not be co-located or operating in conjunction with any other antenna or transmitter. □ □

4. Changes or modifications to this unit not expressly approved by the party responsible for compliance could void the user authority to operate the equipment. □ □