

BELKIN®

www.belkin.com

Belkin Tech Support

US: 310-898-1100, ext. 2263

800-223-5546, ext. 2263

UK: 0845 607 77 87

Australia: 1800 235 546

New Zealand: 0800 235 546

Singapore: 65 64857620

Europe: www.belkin.com/support

© 2009 Belkin International, Inc. All rights reserved. All trade names are registered trademarks of respective manufacturers listed. Microsoft, Windows, and Windows Vista are either trademarks or registered trademarks of Microsoft Corporation in the United States and/or other countries. Mac and Mac OS are trademarks of Apple Inc., registered in the U.S. and other countries. The *Bluetooth* name and the *Bluetooth* trademarks are owned by *Bluetooth* SIG, Inc., and are used by Belkin International, Inc., under license.

F5L031-XXX • 8820-00094-B

BELKIN®

***Bluetooth*® Comfort Mouse**
Quick Installation Guide

Introduction

Thank you for purchasing the Belkin *Bluetooth* Comfort Mouse. With a simple 3-minute setup, this wireless *Bluetooth* Mouse will talk directly to your laptop enabled with *Bluetooth* technology without a dongle.

System Requirements

Operating Systems:

- Mac OS® X v10.47 or later
- Microsoft® Windows® XP, 2000, and Vista®

Hardware:

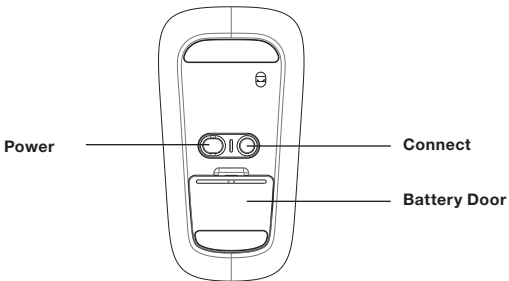
- Laptop enabled with *Bluetooth* technology

Note: If you have a Windows XP, 2000, or Vista operating system, please run the included installation CD to enable the horizontal scroll function on the Mouse.

Getting Started

Turning the Mouse On:

1. Place the two AA batteries into the compartment located on the bottom of the Mouse.
2. Turn the Mouse on by pressing the gray on/off button located on the bottom of the Mouse.




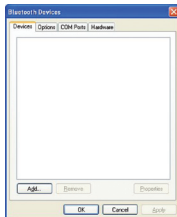
Pairing the Mouse with your Laptop

If you plan to pair the mouse with your laptop enabled with *Bluetooth* technology, please also try instructions provided by the laptop manufacturer. If you plan to pair this mouse with a separate *Bluetooth* adapter, please also try the instructions provided by the manufacturer of the adapter.

For Windows Users:

Note that below screenshots are from a Windows XP system. If you have a different Windows operating system, screenshots will vary.

1. Double-click the *Bluetooth* icon  located on the bottom right-hand side of your desktop in the Windows task bar. Under the “Devices” tab, click “Add”.

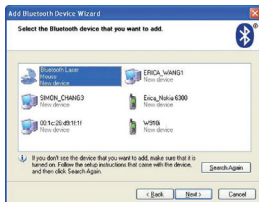


2. Press and hold the blue “connect” button located on the bottom of your Mouse until the blue connect LED located on the top side of the Mouse starts flashing. At the same time, select “My device is set up and ready to be found”, and click “Next”.



Pairing the Mouse with your Laptop

3. Select “Belkin Bluetooth Mouse” on your screen, and then click “Next”.



4. Click “Don’t use Passkey”, and click “Next”.



5. Click “Finish”.



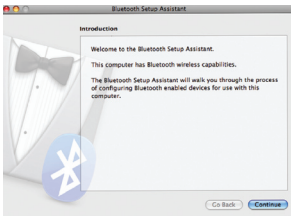
Pairing the Mouse with your Laptop

For Mac® Users:

1. Click “System Preferences”, and then click “Bluetooth”.

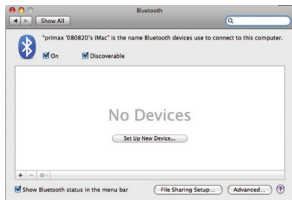


2. Click “Set Up New Devices”.



Pairing the Mouse with your Laptop

3. Click “Continue”.

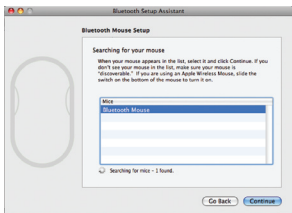


4. Press and hold the blue “connect” button located on the bottom of your Mouse until the blue connect LED located on the top side of the Mouse starts flashing. Select “Mouse” from the device list, and click “Continue”.



Pairing the Mouse with your Laptop

5. Select “Belkin *Bluetooth* Mouse” on your screen, and then click “Continue”.



6. On the “Conclusion” screen, click “Quit”.



FCC Statement

Federal Communication Commission Interference Statement

This equipment has been tested and found to comply with the limits for a Class B digital device, pursuant to Part 15 of the FCC Rules. These limits are designed to provide reasonable protection against harmful interference in a residential installation. This equipment generates, uses and can radiate radio frequency energy and, if not installed and used in accordance with the instructions, may cause harmful interference to radio communications. However, there is no guarantee that interference will not occur in a particular installation. If this equipment does cause harmful interference to radio or television reception, which can be determined by turning the equipment off and on, the user is encouraged to try to correct the interference by one of the following measures:

- Reorient or relocate the receiving antenna.
- Increase the separation between the equipment and receiver.
- Connect the equipment into an outlet on a circuit different from that to which the receiver is connected.
- Consult the dealer or an experienced radio/TV technician for help.

This device complies with Part 15 of the FCC Rules. Operation is subject to the following two conditions: (1) This device may not cause harmful interference, and (2) this device must accept any interference received, including interference that may cause undesired operation.

FCC Caution: Any changes or modifications not expressly approved by the party responsible for compliance could void the user's authority to operate this equipment.

IMPORTANT NOTE:

FCC Radiation Exposure Statement:

This equipment complies with FCC radiation exposure limits set forth for an uncontrolled environment. End users must follow the specific operating instructions for satisfying RF exposure compliance.

This transmitter must not be co-located or operating in conjunction with any other antenna or transmitter.

IC Statement

Operation is subject to the following two conditions: 1) this device may not cause interference and 2) this device must accept any interference, including interference that may cause undesired operation of the device.

Laser Safety Statement

This device complies with international standard IEC 60825-1:2007 for a Class 1 laser product. This device also complies with 21 CFR 1040.10 and 1040.11 except for deviations pursuant to Laser Notice No. 50, dated June 24, 2007.