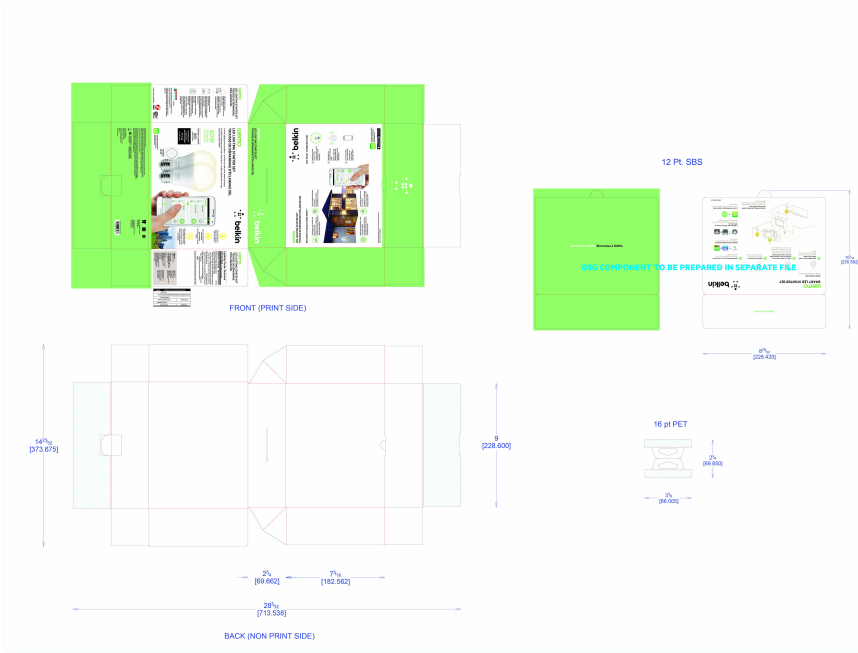


Artwork File:

DIE LAYOUT



Business Unit: **Conserve**
 Program Manager:
 Packaging Engineer: **Ramji Jayaram**
 Retail Outside Dimension (Including Hang Tab)
 L x W x D (in): 0 x 0 x 0
 L x W x D (mm): 0.00 x 0.00 x 0.00
DIE/MATERIAL SPECS:
 Material: **SBS-24/.61mm/400g C1S**
 Blank Size (in): **54.563 x 33.596**
 Blank Size (mm): **1385.910 x 853.338**
 This dieline works for following skus (if any):

Unit: **IN/MM**
 Side Shown: **PRINT SIDE**
 Flute/Grain: **vertical**
 Tolerance: +/- 1/32" - 0.8mm
 Drawing Scale 1:1

RELEASE DATE: **11/20/2013**

DIELINE:
Intermediate

THIS DOCUMENT & THE INFORMATION IN IT ARE THE CONFIDENTIAL PROPERTY OF BELKIN INTERNATIONAL AND MUST NOT BE COPIED, REPRODUCED OR USED IN ANY MANNER WITHOUT THE WRITTEN CONSENT OF BELKIN CORPORATION. IT MUST BE RETURNED UPON REQUEST

PRINT SPECS:
Color Plates:

Finish:

Notes:

**DO NOT PRINT
DIE LINES, PRINTERS NOTES**