

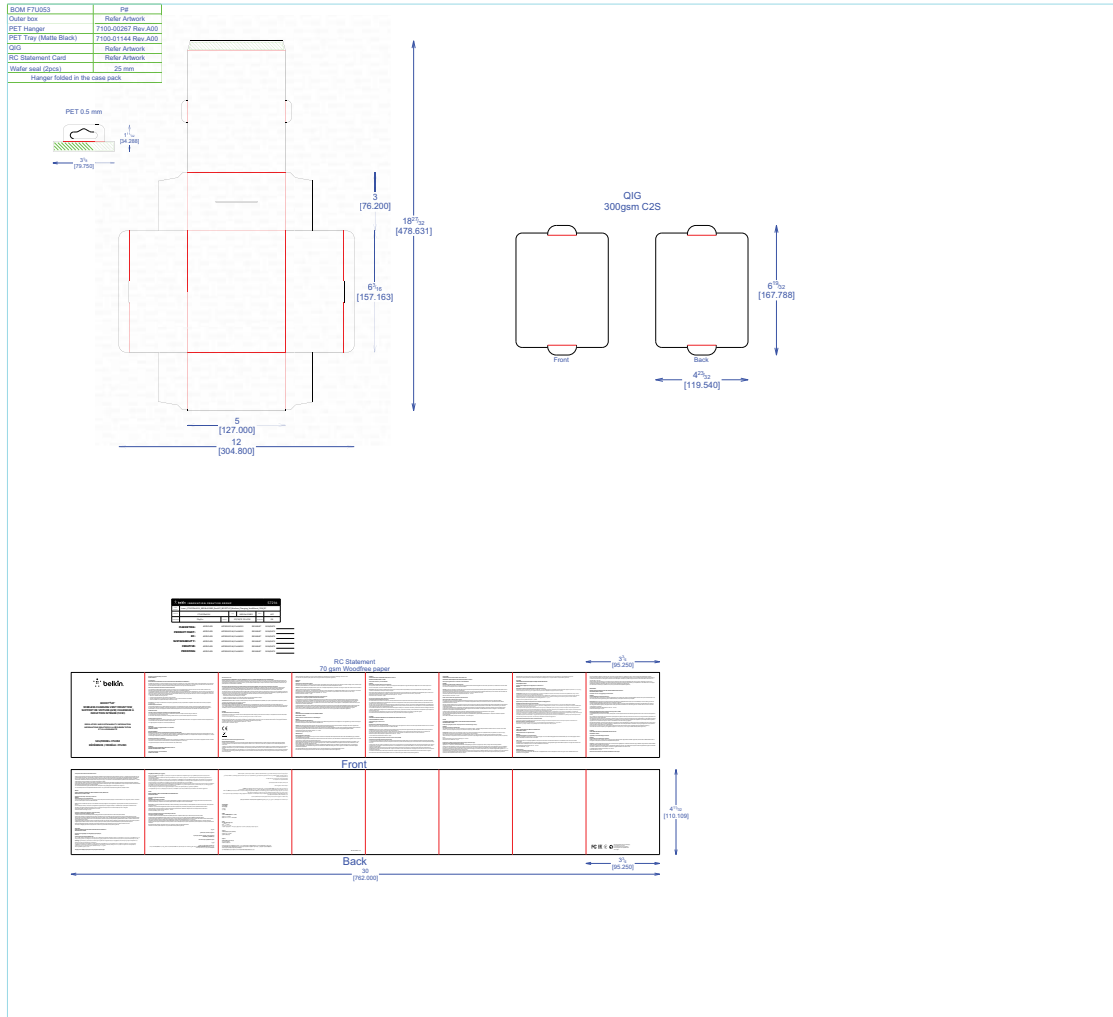


Die Line File: IDL_F7U053_WIN107 WIRELESS CHARGING VENT MOUNT

REV
A 00

Artwork File: Insert_F7U053btXXX_8850bt00882_RevA01_BOOSTUP_Wireless_Charging_VentMount_10W_RC

DIE LAYOUT



Business Unit: Core
Program Manager: Andrew Camba
Packaging Engineer: Matthew Duffy

Retail Outside Dimension (Including Hang Tab)
L x W x D (in): 5 x 2+1/4 x 7
L x W x D (mm): 127.00 x 57.15 x 177.80

DIE/MATERIAL SPECS:
Material: 350gsm C1S SBS (20pt)
Blank Size (in): 35.435 x 18+27/32
Blank Size (mm): 900.048 x 478.631

This dieline works for following skus (if any):

Unit: IN/MM
Side Shown: PRINT SIDE
Flute/Grain: horizontal
Tolerance: +/- 1/32" - 0.8mm
Drawing Scale 1:1

RELEASE DATE: 01/14/2019

DIELINE:
Intermediaite

THIS DOCUMENT & THE INFORMATION IN IT ARE THE CONFIDENTIAL PROPERTY OF BELKIN INTERNATIONAL AND MUST NOT BE COPIED, REPRODUCED OR USED IN ANY MANNER WITHOUT THE WRITTEN CONSENT OF BELKIN CORPORATION. IT MUST BE RETURNED UPON REQUEST

PRINT SPECS:

Color Plates:

C	M	PMS 7488	PMS WARM GRAY 6
Y	K		

Finish:

SPOT AQ - GLOSS
OVERALL PP COAT

Notes:
MAGENTA INDICATES SPOT AQ GLOSS - MAGENTA COLOR DOES NOT PRINT
ALL TEXT AND GRAPHIC ELEMENTS COLOR: CMYK, PMS 7488C, PMS WARM GRAY 6C

DO NOT PRINT DIE LINES, PRINTERS NOTES