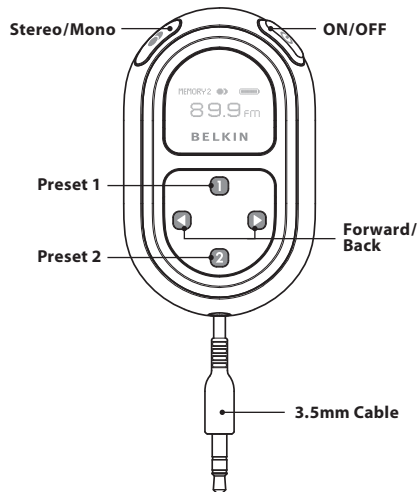


BELKIN®

User Manual
TuneCast® 3 Mobile FM Transmitter

Introduction

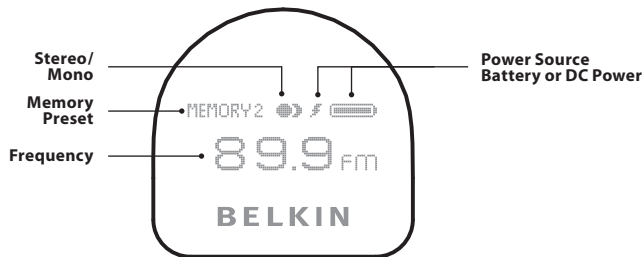
Congratulations and thank you for purchasing the TuneCast 3 Mobile FM Transmitter from Belkin. This product is designed to play your portable audio device through your car, home, or portable stereo. Please review this User Manual carefully so that you can be sure to get the most from your TuneCast 3, virtually anywhere you go.



Operating Instructions

Using the TuneCast 3 Mobile FM Transmitter

1. Turn down your car stereo's volume.
2. Tune your stereo frequency to a channel with a weak broadcast signal. The ideal channel is one that is not broadcasting a radio program, or is doing so weakly.
3. Connect the TuneCast 3 to your portable audio device.
4. Connect the included Auto Power Cord to your cigarette-lighter outlet in your car and to the bottom of your TuneCast 3 for optional powering in the car.
5. Press and hold the ON/OFF button for approximately two seconds. The display's status bar will indicate when the device is powered on.
6. Press the "◀" or "▶" button on the TuneCast 3 to match the frequency on the radio chosen in step 2. Pressing and holding either button will provide faster tuning.
7. Adjust the volume on the audio device to about three-fourths of the maximum. Adjust the volume of your FM radio to the desired listening level.

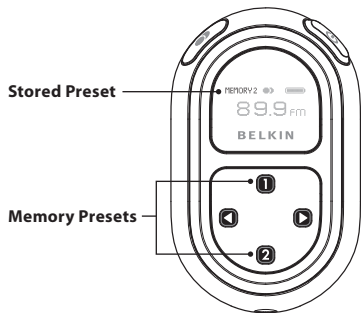


Operating Instructions

Storing and Using Presets

1. To store a preset, select the desired frequency using "◀" or "▶" buttons. Press and hold the desired preset button (1 or 2) for two seconds (the status bar will give you visible feedback). An audible beep sounds in the transmitted audio when the new frequency is programmed. The TuneCast 3 display reflects the change when the memory button is released by showing which memory button was pressed along with the frequency saved in that memory position.
2. To select one of your preset frequencies, momentarily press "1" or "2". This will instantly tune the TuneCast 3 to the frequency stored in that preset.

NOTE: Storing a preset will memorize the frequency as well as the current mono/stereo setting.

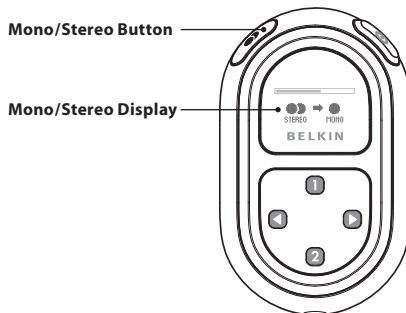


Operating Instructions

Stereo/Mono Selection

Transmitting music in stereo generally gives you the highest-quality listening experience. However, you may get better FM-signal reception by changing the transmission to mono. The TuneCast 3 transmits in stereo mode by default. We suggest that you switch from stereo to mono transmission only if your car stereo is NOT receiving a clear signal from the TuneCast 3, or if you are listening to mono recordings such as audio books.

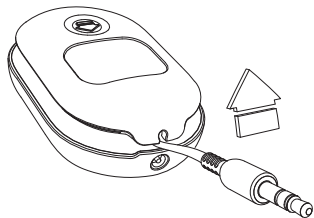
Press and hold the "Mono/Stereo" button located on the upper-left corner of the TuneCast 3. The status-bar indicator will transition from stereo to mono or vice versa. The TuneCast 3 display will return to normal operation where the current frequency is shown along with the current mono or stereo setting represented by:



Operating Instructions

Adjusting and Locking the Cable

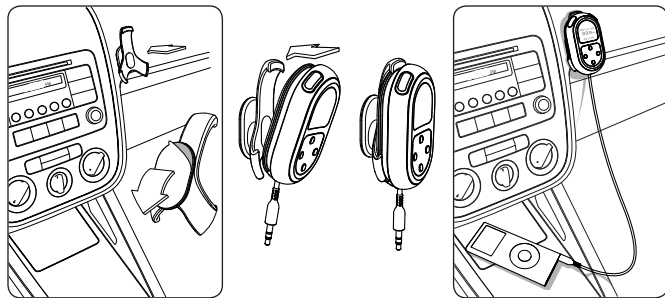
The cable length of the TuneCast 3 can be changed and locked for different applications.



Operating Instructions

Mounting

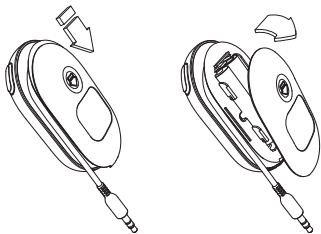
Use the cradle and mount with adhesive backing to attach your TuneCast 3 to any smooth surface.



Operating Instructions

Changing the Batteries

Gently push the battery door on the back of the unit downward. Replace batteries. Position cover on back by gently sliding it up until it locks in position.



Important TuneCast 3 Battery-Operation Details

TuneCast 3 automatically extends battery life and helps ensure safe operation in these ways:

1. TuneCast 3 turns off after approximately 10 minutes without audio detection. We recommend that you manually turn off the TuneCast 3 when not using it, to limit unnecessary battery use.
2. When plugged into your vehicle's power outlet, TuneCast 3 automatically switches from battery to DC power.
3. TuneCast 3 displays the battery-life status and turns itself off when the batteries no longer contain enough power to operate. This prevents a potentially hazardous over-discharge condition.

Troubleshooting

Issue

The audio is distorted.

Solution 1

Decrease the volume of your audio device until you no longer hear distortion. Keeping the device's volume level at or below three-fourths of the maximum should prevent audio distortion. However, don't turn it so low that the audio-detection circuit shuts down your TuneCast 3.

Solution 2

Tune your car stereo and the TuneCast 3 to a different frequency.

Issue

TuneCast 3 automatically turns off when I am playing music.

Solution

Turn up your music-player volume. If the audio-detection circuit does not detect audio for 10 minutes, it shuts down the unit to preserve the battery. Possible causes of this situation are having the music-player volume too low or pausing the player for longer than 10 minutes.

Issue

The battery indicator does not seem to display the correct battery status.

Solution

Be sure to use non-rechargeable alkaline batteries. Other battery types can cause TuneCast 3 to display incorrect battery life.

Issue

My TuneCast 3 automatically powers off when I turn off my vehicle or unplug the unit from my car's power outlet.

Solution

TuneCast 3 automatically turns off when external DC power is removed.

Troubleshooting

Issue

I am unable to get clear FM reception.

Solution 1

Tune your car stereo and the TuneCast 3 to a different frequency.

Solution 2

In some instances, lowering the car antenna (in cars where available) improves the clarity of the TuneCast 3 signal.

Solution 3

Change the stereo/mono setting to mono mode. This may improve signal reception, but the audio will be monaural instead of stereo.

Solution 4

If used indoors, attach or reposition the antennae on the stereo receiver.

Issue

TuneCast 3 does not appear to be saving my settings.

Solution

Be sure NOT to release the button until the audible beep occurs or the status bar indicator is complete. Your settings are stored in memory when the TuneCast 3 display returns to normal operation.

Storage Precautions

When storing the TuneCast 3 for extended periods of time, Belkin recommends the following:

- 1) Remove the batteries.
- 2) Keep out of direct sunlight and fluorescent lamps.
- 3) Avoid low (below 0° C) and high (greater than 35° C) temperature environments.
- 4) Avoid high humidity environments.

Information

Electrical/Environmental Specifications

- Power Requirement: 2x AAA batteries, or 5.5V, 75mA at CLA input
- Operating Temperature: 0° C to 45° C
- Expected Continuous Run Time: 20 hours on new, 1175mAh alkaline batteries

FCC Statement

DECLARATION OF CONFORMITY WITH FCC RULES FOR ELECTROMAGNETIC COMPATIBILITY
We, Belkin Corporation, of 501 West Walnut Street, Compton, CA 90220, declare under our sole responsibility that the product:

F8M010

to which this declaration relates:

Has been tested and found to comply with the limits for a Class B digital device, pursuant to part 15 of the FCC Rules. These limits are designed to provide reasonable protection against harmful interference in a residential installation. This equipment generates, uses, and can radiate radio frequency energy and, if not installed and used in accordance with the instructions, may cause harmful interference to radio communications. However, there is no guarantee that interference will not occur in a particular installation. If this equipment does cause harmful interference to radio or television reception, which can be determined by turning the equipment off and on, the user is encouraged to try to correct the interference by one or more of the following measures:

- Reorient or relocate the receiving antenna.
- Increase the separation between the equipment and receiver.
- Connect the equipment into an outlet on a circuit different from that to which the receiver is connected.
- Consult the dealer or an experienced radio/TV technician for help.

This device complies with part 15 of the FCC Rules. Operation is subject to the following two conditions: (1) This device may not cause harmful interference, and (2) this device must accept any interference received, including interference that may cause undesired operation.

Changes or modifications not expressly approved by the party responsible for compliance could void the user's authority to operate the equipment.

ICES

This Class B digital apparatus complies with Canadian ICES-003. Cet appareil numérique de la classe B est conforme à la norme NMB-003 du Canada.

Belkin Corporation Limited 3-Year Product Warranty

What this warranty covers.

Belkin Corporation warrants to the original purchaser of this Belkin product that the product shall be free of defects in design, assembly, material, or workmanship.

What the period of coverage is.

Belkin Corporation warrants the Belkin product for three years.

What will we do to correct problems?

Product Warranty.

Belkin will repair or replace, at its option, any defective product free of charge (except for shipping charges for the product).

What is not covered by this warranty?

All above warranties are null and void if the Belkin product is not provided to Belkin Corporation for inspection upon Belkin's request at the sole expense of the purchaser, or if Belkin Corporation determines that the Belkin product has been improperly installed, altered in any way, or tampered with. The Belkin Product Warranty does not protect against acts of God (other than lightning) such as flood, earthquake, war, vandalism, theft, normal-use wear and tear, erosion, depletion, obsolescence, abuse, damage due to low voltage disturbances (i.e. brownouts or sags), non-authorized program, or system equipment modification or alteration.

How to get service.

To get service for your Belkin product you must take the following steps:

1. Contact Belkin Corporation at 501 W. Walnut St., Compton CA 90220, Attn: Customer Service, or call (800)-223-5546, within 15 days of the Occurrence. Be prepared to provide the following information:
 - a. The part number of the Belkin product.
 - b. Where you purchased the product.
 - c. When you purchased the product.
 - d. Copy of original receipt.
2. Your Belkin Customer Service Representative will then instruct you on how to forward your receipt and Belkin product and how to proceed with your claim.

Belkin Corporation Limited 3-Year Product Warranty

Belkin Corporation reserves the right to review the damaged Belkin product. All costs of shipping the Belkin product to Belkin Corporation for inspection shall be borne solely by the purchaser. If Belkin determines, in its sole discretion, that it is impractical to ship the damaged equipment to Belkin Corporation, Belkin may designate, in its sole discretion, an equipment repair facility to inspect and estimate the cost to repair such equipment. The cost, if any, of shipping the equipment to and from such repair facility and of such estimate shall be borne solely by the purchaser. Damaged equipment must remain available for inspection until the claim is finalized. Whenever claims are settled, Belkin Corporation reserves the right to be subrogated under any existing insurance policies the purchaser may have.

How state law relates to the warranty.

THIS WARRANTY CONTAINS THE SOLE WARRANTY OF BELKIN CORPORATION, THERE ARE NO OTHER WARRANTIES, EXPRESSED OR, EXCEPT AS REQUIRED BY LAW, IMPLIED, INCLUDING THE IMPLIED WARRANTY OR CONDITION OF QUALITY, MERCHANTABILITY OR FITNESS FOR A PARTICULAR PURPOSE, AND SUCH IMPLIED WARRANTIES, IF ANY, ARE LIMITED IN DURATION TO THE TERM OF THIS WARRANTY.

Some states do not allow limitations on how long an implied warranty lasts, so the above limitations may not apply to you.

IN NO EVENT SHALL BELKIN CORPORATION BE LIABLE FOR INCIDENTAL, SPECIAL, DIRECT, INDIRECT, CONSEQUENTIAL OR MULTIPLE DAMAGES SUCH AS, BUT NOT LIMITED TO, LOST BUSINESS OR PROFITS ARISING OUT OF THE SALE OR USE OF ANY BELKIN PRODUCT, EVEN IF ADVISED OF THE POSSIBILITY OF SUCH DAMAGES.

This warranty gives you specific legal rights, and you may also have other rights, which may vary from state to state. Some states do not allow the exclusion or limitation of incidental, consequential, or other damages, so the above limitations may not apply to you.

BELKIN®

www.belkin.com

Belkin Tech Support
US: 310-898-1100 ext. 2263
800-223-5546 ext. 2263
Europe: 00 800 223 55 460
Australia: 1800 235 546
New Zealand: 0800 235 546
Singapore: 800 616 1790

Belkin Corporation
501 West Walnut Street
Los Angeles, CA 90220, USA
310-898-1100
310-898-1111 fax

Belkin Ltd.
Express Business Park, Shipton Way
Rushden, NN10 6GL, United Kingdom
+44 (0) 1933 35 2000
+44 (0) 1933 31 2000 fax

Belkin B.V.
Boeing Avenue 333
1119 PH Schiphol-Rijk, The Netherlands
+31 (0) 20 654 7300
+31 (0) 20 654 7349 fax

Belkin Ltd.
4 Pioneer Avenue
Tuggerah Business Park
Tuggerah, NSW 2259, Australia
+61 (0) 2 4350 4600
+61 (0) 2 4350 4700 fax

© 2006 Belkin Corporation. All rights reserved.
All trade names are registered trademarks of respective manufacturers listed.