



AC Wi-Fi®  
DUAL-BAND  
USB ADAPTER

**User Manual**

F9L1106V2 8820-01181 Rev. E00

# TABLE OF CONTENTS

<b>Introduction</b> .....	<b>1</b>
Benefits of a Home Network .....	1
Advantages of a Wireless Network .....	2
Placement of your Wireless Networking Hardware for Optimal Performance .....	3
<b>Overview</b> .....	<b>7</b>
Product Features .....	7
Applications and Advantages .....	8
Product Specifications .....	9
System Requirements .....	10
Package Contents .....	10
<b>Installing and Setting up the Adapter</b> .....	<b>11</b>
A. Installation Process for Windows Vista and 7 .....	11
B. Installation Process for Windows XP .....	20
Connecting to a Secure Wi-Fi® Network .....	27
<b>Troubleshooting</b> .....	<b>28</b>
<b>Information</b> .....	<b>35</b>

## INTRODUCTION

---

Thank you for purchasing the Belkin AC Wi-Fi Dual-Band USB Adapter. Now you can take advantage of this great new technology and gain the freedom to network your home and office computers wirelessly. This Adapter allows you to connect a notebook or desktop computer to your network. Please be sure to read through this User Manual completely, and pay special attention to the section titled, "Placement of your Wireless Networking Hardware for Optimal Performance."

### **Benefits of a Home Network**

Your Belkin Home Network will allow you to:

- Share one high-speed Internet connection with all the computers in your home
- Share resources, such as files, and hard drives among all the connected computers in your home
- Share a single printer with the entire family
- Share documents, music, video, and digital pictures
- Store, retrieve, and copy files from one computer to another
- Simultaneously play games online, check Internet email, and chat

### **Advantages of a Wireless Network**

- Mobility – you'll no longer need a dedicated "computer room"—now you can work on a networked laptop or desktop computer anywhere within your wireless range
- Easy installation – Belkin Easy Installation Wizards make setup simple
- Flexibility – set up and access printers, computers, and other networking devices from anywhere in your home
- Easy expansion – the wide range of Belkin networking products let you expand your network to include devices such as printers and gaming consoles
- No cabling required – you can spare the expense and hassle of retrofitting Ethernet cabling throughout the home or office
- Widespread industry acceptance – choose from a wide range of interoperable networking products

### **Placement of your Wireless Networking Hardware for Optimal Performance**

Your wireless connection will be stronger the closer your computer is to your wireless router (or access point). Typical indoor operating range for your wireless devices is between 100 and 200 feet. In the same way, your wireless connection and performance will degrade somewhat as the distance between your wireless router (or access point) and connected devices increases. This may or may not be noticeable to you. As you move farther from your wireless router (or access point), connection speed may decrease. Factors that can weaken signals simply by getting in the way of your network's radio waves are metal appliances or obstructions, and walls.

If you have concerns about your network's performance that might be related to range or obstruction factors, try moving the computer to a position between five and 10 feet from the wireless router (or access point) in order to see if distance is the problem. If difficulties persist even at close range, please contact Belkin Technical Support.

**Note:** While some of the items listed below can affect network performance, they will not prohibit your wireless network from functioning; if you are concerned that your network is not operating at its maximum effectiveness, this checklist may help.

### 1. Placement of your Wireless Router (or Access Point)

Place your wireless router (or access point), the central connection point of your network, as close as possible to the center of your wireless network devices.

To achieve the best wireless network coverage for your “wireless clients,” (i.e., computers enabled by Belkin Adapters or Cards):

- Ensure that your wireless router’s (or access point’s) antennas are parallel to each other, and are positioned vertically (toward the ceiling). If your wireless router (or access point) itself is positioned vertically, point the antennas as much as possible in an upward direction.
- In multistory homes, place the wireless router (or access point) on a floor that is as close to the center of the home as possible. This may mean placing the wireless router (or access point) on an upper floor.
- Try not to place the wireless router (or access point) near a cordless 2.4GHz phone.

### 2. Avoid Obstacles and Interference

Avoid placing your wireless router (or access point) near devices that may emit radio “noise”, such as microwave ovens. Other objects that can inhibit wireless communication can include:

- Refrigerators
- Washers and/or dryers
- Metal cabinets
- Large aquariums
- Metallic-based, UV-tinted windows
- Microwaves

If your wireless signal seems weak in some spots, make sure that objects such as these are not blocking the signal’s path between your computers and wireless router (or access point).

### 3. Cordless Phone Placement

If the performance of your wireless network is impaired after attending to the above issues, and you have a cordless phone:

- Try moving cordless phones away from the wireless router (or access point) and your wireless-enabled computers.
- Unplug and remove the battery from any cordless phone that operates on the 2.4GHz band (check manufacturer's information). If this fixes the problem, your phone may be interfering.
- If your phone supports channel selection, change the channel on the phone to the farthest channel from your wireless network as possible. For example, change the phone to channel 1 and move your wireless router (or access point) to channel 11. (Your channel selection will vary depending on your region.) See your phone's user manual for detailed instructions.
- If necessary, consider switching to a 900MHz or 5GHz cordless phone.

### 4. Choose the “Quietest” Channel for your Wireless Network

In locations where homes or offices are close together, such as apartment buildings or office complexes, there may be wireless networks nearby that can conflict with yours. Use the Site Survey capabilities of your Belkin Wireless Networking Utility to locate any other wireless networks, and move your wireless router (or access point) and computers to a channel as far away from other networks as possible.

Experiment with more than one of the available channels in order to find the clearest connection and avoid interference from neighboring cordless phones or other wireless devices.

For more Belkin wireless networking products, use the detailed Site Survey and wireless channel information included in your User Manual.

### 5. Secure Connections, VPNs, and AOL

Secure connections typically require a user name and password, and are used where security is important. Secure connections include:

- Virtual Private Network (VPN) connections, often used to connect remotely to an office network
- The “Bring Your Own Access” program from America Online (AOL), which lets you use AOL through broadband provided by another cable or DSL service
- Most online banking websites
- Many commercial websites that require a user name and password to access your account

Secure connections can be interrupted by a computer’s power management setting, which causes it to “go to sleep.” The simplest solution to avoid this is to simply reconnect by re-running the VPN or AOL software, or by re-logging into the secure website.

A second alternative is to change your computer’s power management settings so it does not go to sleep; however, this may not be appropriate for portable computers. To change your power management setting in Windows, see the “Power Options” item in the Control Panel.

If you continue to have difficulty with Secure Connections, VPNs, and AOL, please review steps 1–4 in the previous pages to be sure you have addressed these issues.

These guidelines should allow you to cover the maximum possible area with your wireless router. Should you need to cover an even wider area, we suggest the Belkin Wireless Range Extender/Access Point.

For more information regarding our networking products, visit our website at [www.belkin.com/networking](http://www.belkin.com/networking) or call Belkin Technical Support.



## OVERVIEW

---

### Product Features

The Adapter complies with the IEEE 802.11ac draft specification to communicate with other 802.11ac-compliant wireless devices up to 867Mbps\*. The Adapter complies with the IEEE 802.11n specification to communicate with other 802.11n-compliant wireless devices at up to 300Mbps\*. The Adapter is also compatible with 802.11a/g devices at 54Mbps as well as 802.11b products at 11Mbps. The Adapter can operate on the same 2.4GHz frequency band as 802.11b/g Wi-Fi products or 5GHz frequency band as 802.11a Wi-Fi products.

- 2.4GHz or 5GHz band operation
- USB 2.0 interface, for operation in virtually any computer with a USB 2.0 bus-power port
- WPA, WPA2, 64-bit WEP (Wired Equivalent Privacy), or 128-bit WEP encryption
- Wireless access to networked resources
- Data rate of up to 867Mbps\* (802.11ac), 300Mbps\* (802.11n), 54Mbps (802.11a/g), or 11Mbps (802.11b)
- Easy installation and use
- LED power and network link/activity indicator

### Applications and Advantages

- **Wireless roaming with a laptop around the home or office**

Offers the freedom of networking without cables

- **Connection rates of up to 867Mbps\***

Provides immediate high-speed wireless connectivity at home, work, and hotspot locations without compromising the use of existing 802.11b/g products

- **Compatibility with 802.11a/b/g products**

The Adapter is backward-compatible with existing Wi-Fi (IEEE 802.11a/b/g) products

- **Difficult-to-wire environments**

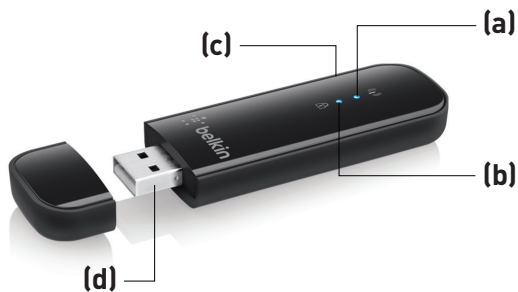
Enables networking in buildings with solid or finished walls, or open areas where wiring is difficult to install

- **Frequently changing environments**

Adapts easily in offices or environments that frequently rearrange or change locations

- **SOHO (Small Office/Home Office) networking needs**

Provides the easy and quick, small network installation SOHO users need



### Product Specifications

Host Interface: USB 3.0

Operating Temperature: 32–131 degrees F (0–55 degrees C)

Storage Temperature: -4–149 degrees F (-20–65 degrees C)

Humidity: Max. 90% (non-condensing)

Maximum Operating Range: Up to 1,200 ft.\*\*

**\*NOTE: The standard transmission rate—867Mbps—is the physical data rate. Actual data throughput will be lower.**

\*\*Wireless performance may vary depending on the networking environment.

#### (a) Power/Status LED

Lights when the Adapter is powered on and flashes when it is active.

#### (b) WPS/Security LED

Indicates security status and provides feedback during Wi-Fi Protected Setup handshaking.

#### (c) WPS Push Button

Used for Wi-Fi Protected Setup handshaking with routers.

#### (d) USB Connector

Part of the Adapter that fits into your computer's USB port.

### Package Includes:

AC Wi-Fi Dual-Band USB Adapter

Setup CD with User Manual

### System Requirements

- PC with available USB port
- PC running Windows® XP (SP2 or greater\*\*\*), Windows Vista®, or Windows 7
- CD-ROM drive

### Specifications

- USB 3.0 Interface

\*\*\*Some WPS functionality will be limited on XP service pack 2 without installing some Windows updates. For full function, use XP service pack 3.

## INSTALLING AND SETTING UP THE ADAPTER

---

### A. Installation Process for Windows Vista and 7

**NOTE:** For information on updated drivers, please visit the Belkin website at [www.belkin.com/support](http://www.belkin.com/support)

**IMPORTANT:** INSTALL THE SOFTWARE BEFORE INSERTING THE ADAPTER.

A.1 Insert the Installation Software CD into your CD-ROM drive.

A.2 Click "Next" to begin the installation process.

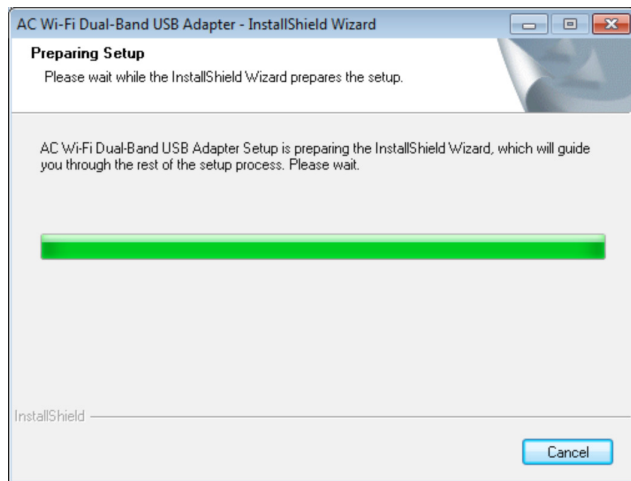


**Note:** If the Belkin Wireless Card Installer screen does not appear within 20 seconds, access your CD-ROM by double-clicking on the "My Computer" icon; then double-click on the CD-ROM drive into which the installation CD has been placed. If the Installer does not start automatically, double-click on the icon named "Installer.exe".

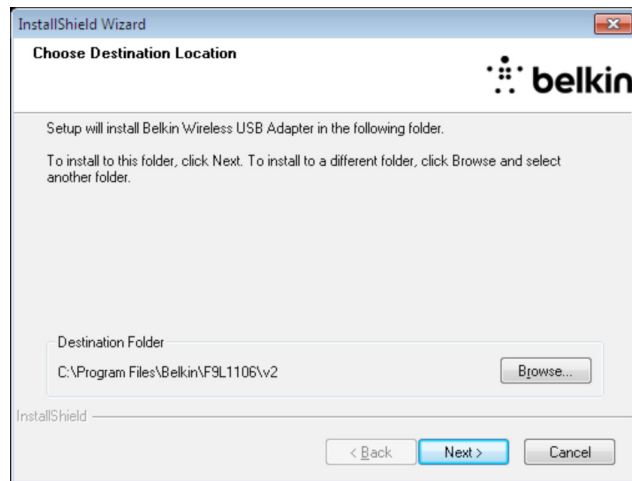
## INSTALLING AND SETTING UP THE ADAPTER

---

A.3 The InstallShield Wizard will start the installation process.



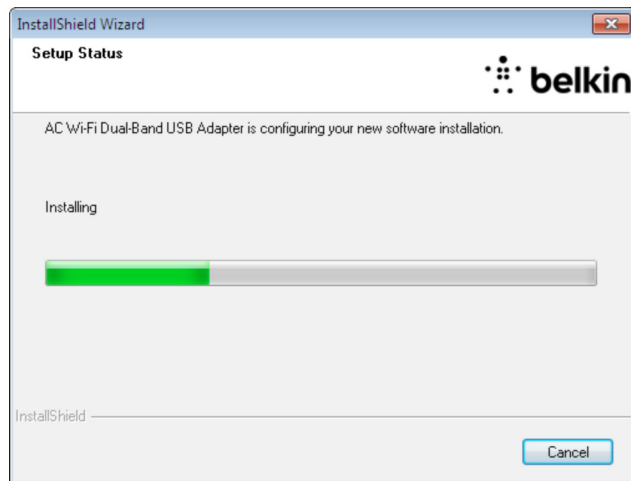
A.4



## INSTALLING AND SETTING UP THE ADAPTER

---

A.5



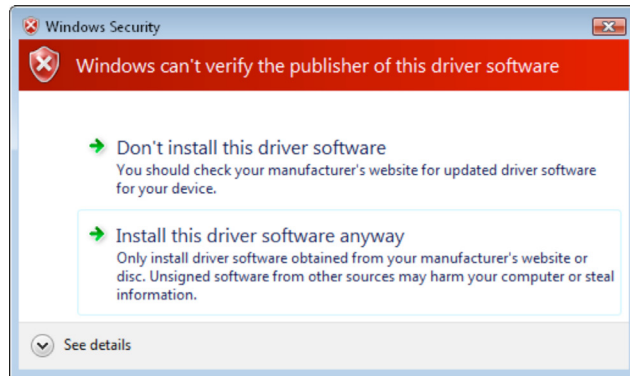
A.6



A.7



A.8 A window may appear showing the message, "Windows can't verify the publisher of this driver software". This DOES NOT indicate a problem. Our software has been fully tested and is compatible with this operating system. Click on "Install this driver software anyway" to continue.

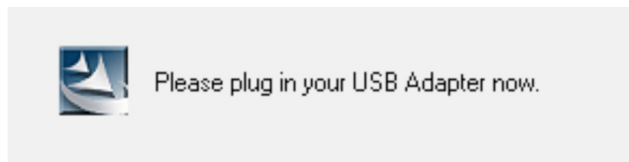




## INSTALLING AND SETTING UP THE ADAPTER

---

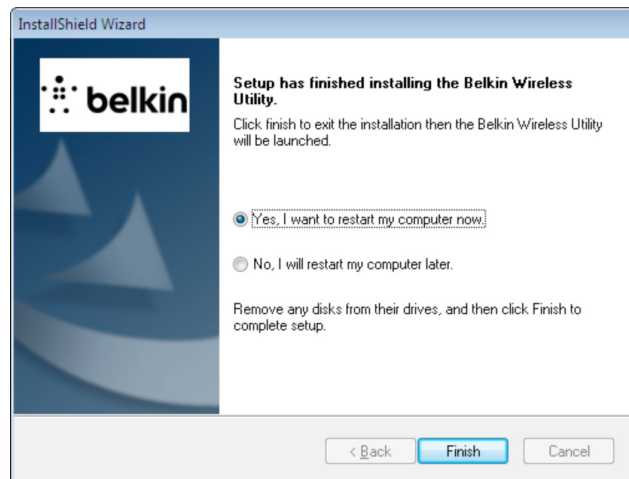
A.9 When prompted, plug in your Adapter.



A.10 When the installation completes, you will see the following pop-up message on your Windows taskbar.



A.11 Click “Finish” to restart your computer.

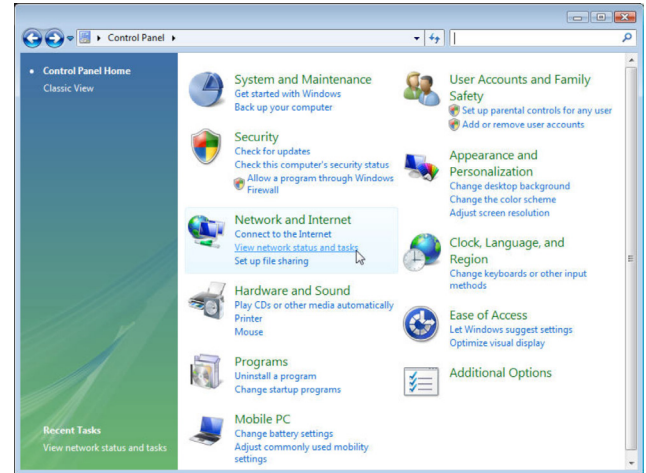


## INSTALLING AND SETTING UP THE ADAPTER

A.12 To connect to the Internet, open the Network and Sharing Center by first opening the Control Panel from the “Start” menu.

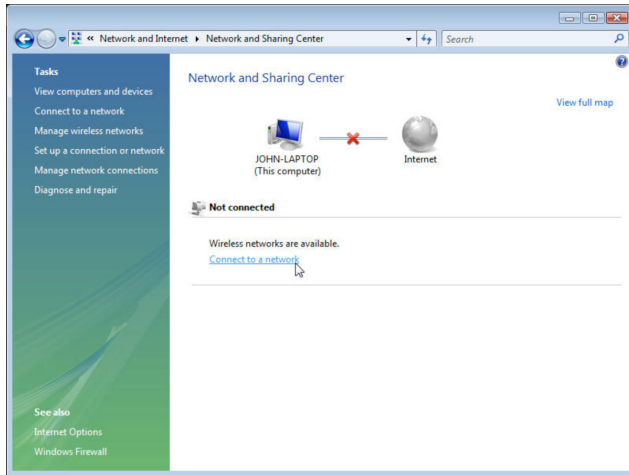


A.13 In the Control Panel, click on “View network status and tasks”.

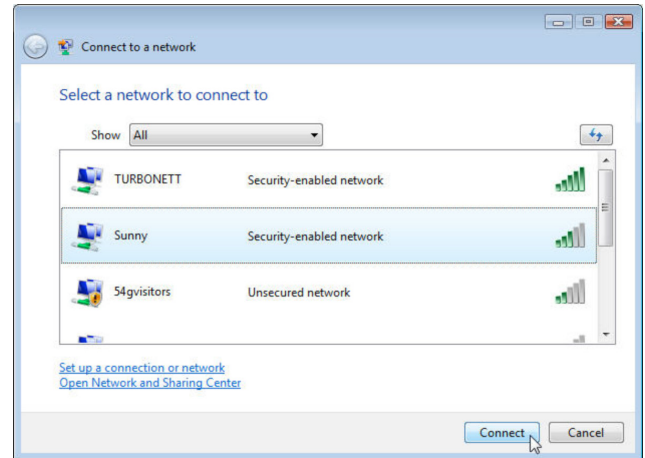


## INSTALLING AND SETTING UP THE ADAPTER

A.14 In the Network and Sharing Center, click on “Connect to a network”.



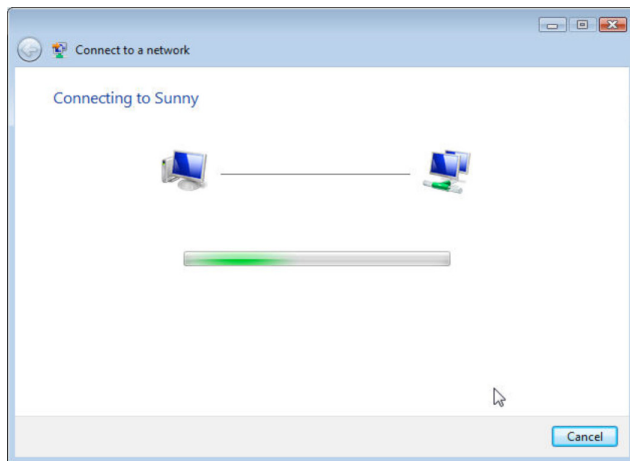
A.15 In the next screen, select an available wireless network and click “Connect”.



## INSTALLING AND SETTING UP THE ADAPTER

---

A.16 Your Adapter will attempt to connect to the selected network.

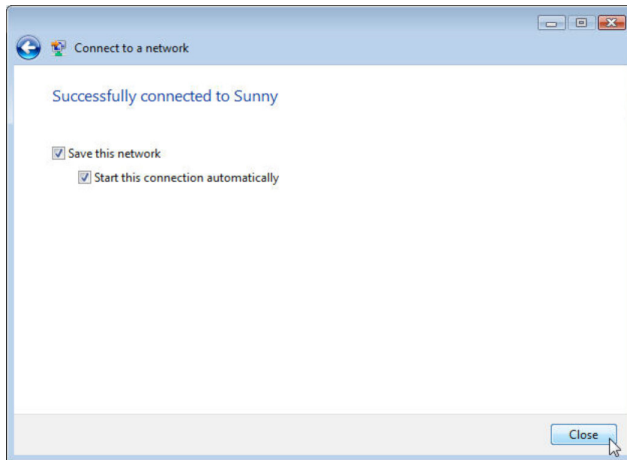


A.17 Depending on the security settings of your wireless network, you may be prompted to enter a network security key or a passphrase. Click "Connect" after you have done so.

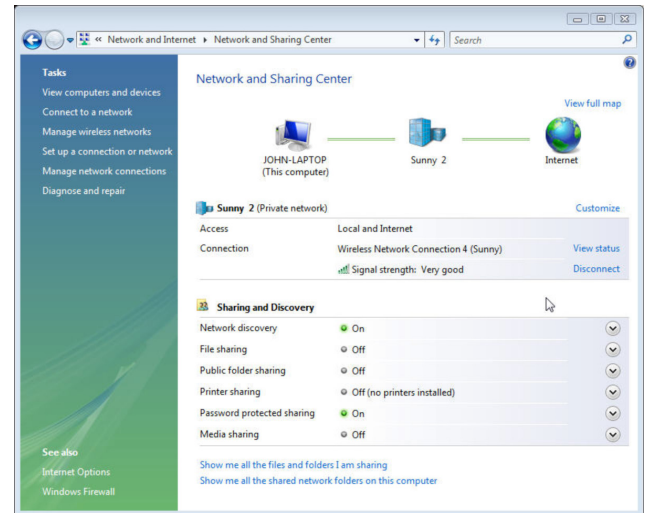


## INSTALLING AND SETTING UP THE ADAPTER

A.18 After connecting to the network, you can choose to save this network and connect automatically when your Adapter is in range.



A.19 The Network and Sharing Center now indicates the network connection that you have just made. The links on the left of the window allow you to configure your network connections.



### B. Installation Process for Windows XP

**IMPORTANT:** INSTALL THE SOFTWARE BEFORE INSERTING THE ADAPTER.

B.1 Insert the Installation Software CD into your CD-ROM drive.

B.2 The Belkin Wireless Adapter Installer screen will automatically appear within up to 20 seconds. Click "Install Software" or "Next" to start the installation.

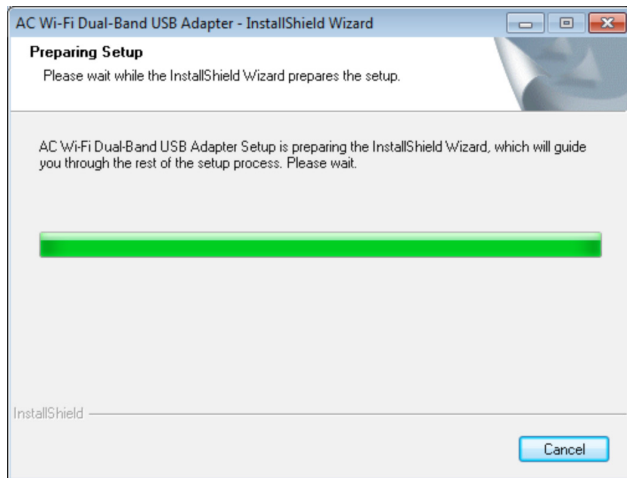


**Note:** If the Belkin Wireless Adapter Installer screen does not appear within 20 seconds, access your CD-ROM by double-clicking on the "My Computer" icon; then double-click on the CD-ROM drive into which the installation CD has been placed. Then, double-click on the icon named "Installer.exe".

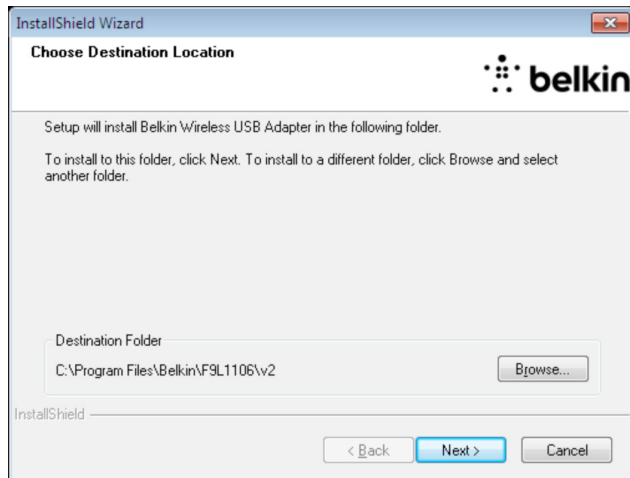
## INSTALLING AND SETTING UP THE ADAPTER

---

B.3 The InstallShield Wizard starts the installation process.



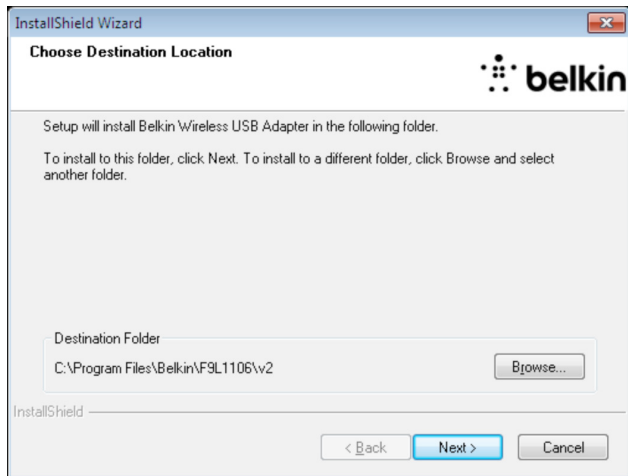
B.4 Select a destination folder for the software installation by clicking "Browse"; or, simply click "Next" to select a default location.



## INSTALLING AND SETTING UP THE ADAPTER

---

B.5 A Setup Status screen lets you know where you are in the setup process.



B.6





B.7



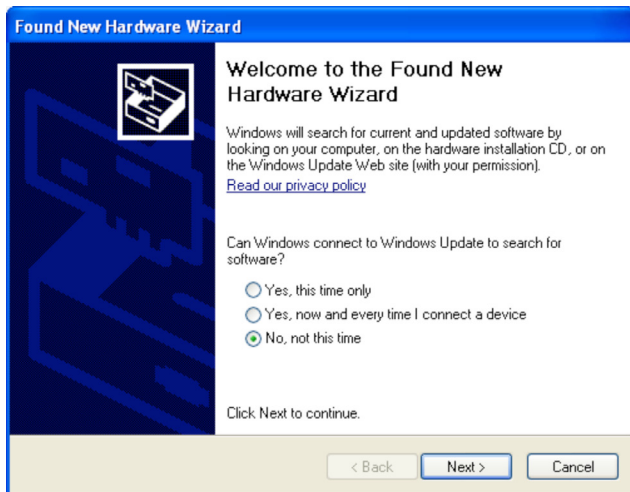
Installing Configuration Service ...

B.8 After the software installation is finished, the following message will appear. Connect the Adapter to your computer.

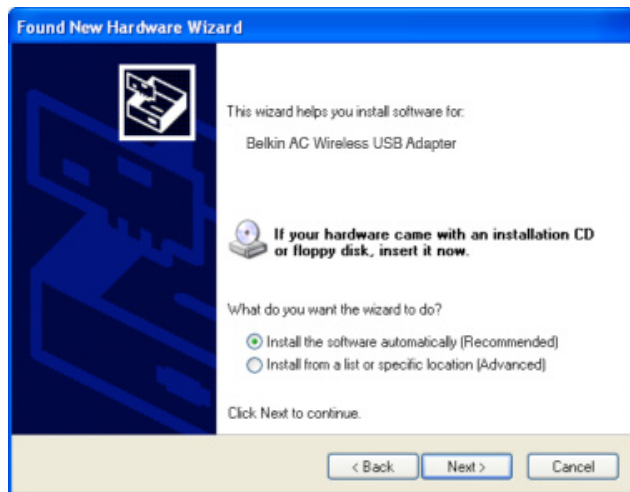


Please plug in your wireless card now.

B.9 The Found New Hardware Wizard might appear in 3–15 seconds. If it does, select “Yes, this time only” and click “Next” to install the hardware.



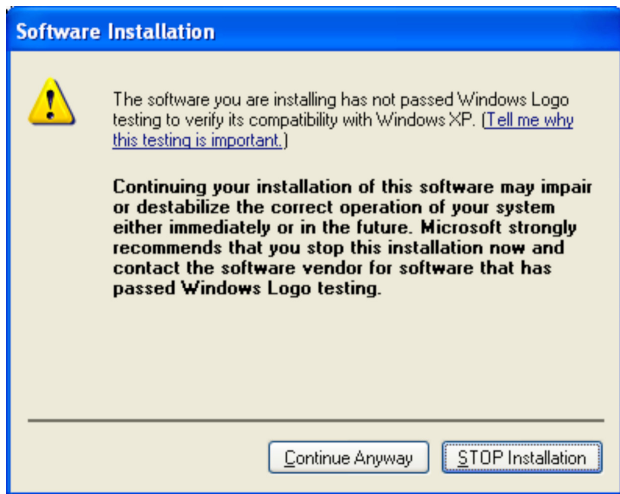
B.10 Select “Install the software automatically (Recommended)” and click “Next” to continue.



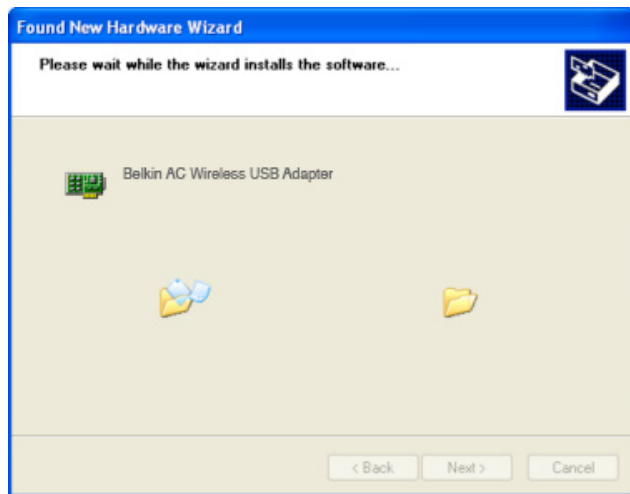
## INSTALLING AND SETTING UP THE ADAPTER

---

B.11 You might see a screen similar to this one. This DOES NOT mean there is a problem. Our software has been fully tested and is compatible with this operating system. Select “Continue Anyway” and follow the on-screen instructions.



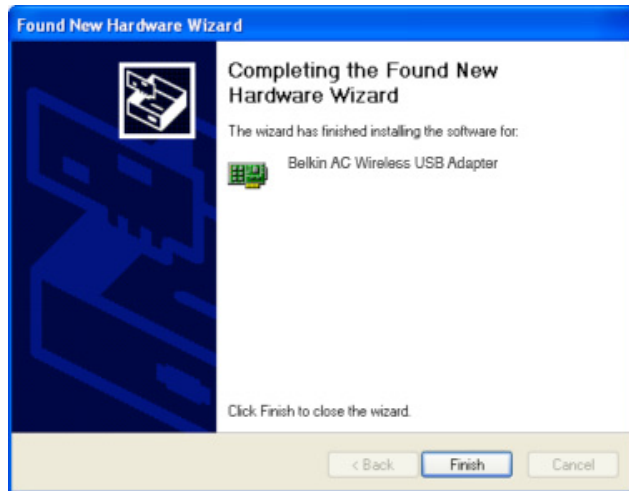
B.12 The Wizard will now install your software.



## INSTALLING AND SETTING UP THE ADAPTER

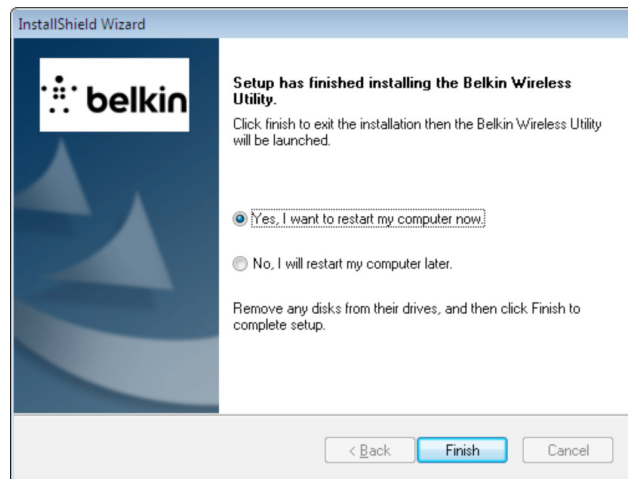
---

B.13 The installation is now complete. Click “Finish” to close the “Found New Hardware Wizard”.



B.14 Click “Finish” again to exit the InstallShield Wizard.

B.15 Depending on which operating system you are using, you might be required to reboot your computer for the changes to take effect. Save your data and close all other applications. Then, click on “Finish” to reboot your computer.



### Connecting to a Secure Wi-Fi® Network

If you choose to connect to a secure network, determine the type of security (WPA/WPA2 or WEP) and use the appropriate field in the dialog box.

**Wireless Equivalent Privacy (WEP)** is a less secure, but more widely adopted wireless security protocol. Depending on the security level (64- or 128-bit), the user will be asked to input a 10- or 26-character hex key. A hex key is a combination of letters, a–f, and numbers, 0–9.

**Wi-Fi Protected Access® (WPA®/WPA2®)** is the new standard in wireless security. Instead of a hex key, WPA/WPA2 uses only passphrases, which are much easier to remember. The passphrase is 8–63 characters and can consist of alphabet letters and numbers.

## TROUBLESHOOTING

---

### I can't connect to the Internet wirelessly.

If you are unable to connect to the Internet from a wireless computer, please check the following items:

- Look at the lights on your wireless router. If you're using a Belkin Wireless Router, the lights should be as follows:
- The "router" light should be on and not blinking.

If this is **NOT** the case, make sure:

- The router's power cord is plugged in.
- All cables are connected between the router and the modem.
- All the modem's LEDs are functioning correctly.  
If not, see your modem's user manual.
- Reboot the router.
- Reboot the modem.

If you continue to have issues, please contact Belkin Technical Support.

If you are not using a Belkin Wireless Router, consult that router manufacturer's user guide.

### Power LED does not come ON; Adapter is not working.

If the LED indicators are not ON, the problem may be that the Adapter is not connected or installed properly. Verify that the Adapter is plugged firmly into the USB port of your computer. Check to see that the drivers for the Adapter have been installed. Right-click on the "My Computer" icon on your desktop. Choose "Properties" and navigate to the "Device Manager" and see if your USB Network Adapter is listed without any errors. If an error is indicated, contact Belkin Technical Support.

### **Link LED is blinking slowly; I cannot connect to a wireless network or the Internet.**

If your Adapter appears to be functioning properly, but you cannot connect to a network or you have a red wireless icon at the bottom of your screen, the problem may be that there is a mismatch between the network name (SSID) settings in your wireless network properties.

Check the SSID settings to see if they match. The SSID is case-sensitive and the spelling on each computer must be exactly the same in order for the Adapter to connect to the wireless router (or access point).

**Note:** To check the SSID settings or look for an available network, double-click the Signal Indicator icon to bring up the “Wireless Networks” screen. Click “Add” if you do not see the network you are trying to connect to and type in the SSID.

For more information about setting up an SSID, please reference your router manufacturer’s user manual. If issues persist even at close range, please contact Belkin Technical Support.

### **Link LED is solid but I cannot connect to the Internet.**

If you have a signal but can’t get online or obtain an IP address, the problem may be that there is a mismatch between the encryption key settings in your computer and wireless router (or access point). Check the WEP, WPA, or WPA2 key settings to see if they match. The key is case-sensitive and the spelling on each computer and wireless router (or access point) must be exactly the same in order for the Adapter to connect to the router. For more information about encryption, please see the “Connecting to a Secure Wi-Fi Network” section.

If issues persist even at close range, please contact Belkin Technical Support.

### **Data transfer is sometimes slow.**

Wireless technology is radio-based, which means connectivity and the throughput performance between devices **decreases** when the distance between devices **increases**. Other factors that will cause signal degradation (metal is generally the worst culprit) are obstructions such as walls and metal appliances. As a result, the typical indoor range of your wireless devices will be between 100 to 200 feet. Note also that connection speed may decrease as you move farther from the wireless router (or access point).

In order to determine if wireless issues are related to range, we suggest temporarily moving the computer, if possible, to five to 10 feet away from the wireless router (or access point). Please see the section titled, "Placement of your Wireless Networking Hardware for Optimal Performance." If issues persist even at close range, please contact Belkin Technical Support.



### **Signal strength is poor.**

Wireless technology is radio-based, which means connectivity and the throughput performance between devices **decreases** when the distance between devices **increases**. Other factors that will cause signal degradation (metal is generally the worst culprit) are obstructions such as walls and metal appliances. As a result, the typical indoor range of your wireless devices will be between 100 to 200 feet. Note also that connection speed may decrease as you move farther from the wireless router (or access point). In order to determine if wireless issues are related to range, we suggest temporarily moving the computer, if possible, to five to 10 feet away from wireless router (or access point).

**Changing the wireless channel** – Depending on local wireless traffic and interference, switching the wireless channel of your network can improve performance and reliability. The default channel the router is shipped with is channel 6. You may choose from several other channels depending on your region; see your router's (or access point's) user manual for instructions on how to choose other channels.

**Limiting the wireless transmit rate** – Limiting the wireless transmit rate can help improve the maximum wireless range, and connection stability. Most wireless cards have the ability to limit the transmission rate. To change this property, go to the Windows Control Panel, open "Network Connections" and double-click on your Adapter's connection. In the "Properties" dialog, select the "Configure" button on the "General" tab (Windows 98 users will have to select the USB Network Adapter in the list box and then click "Properties"), then choose the "Advanced" tab and select the rate property. Wireless client cards are usually set to automatically adjust the wireless transmit rate for you, but doing so can cause periodic disconnects when the wireless signal is too weak; as a rule, slower transmission rates are more stable. Experiment with different connection rates until you find the best one for your environment; note that all available transmission rates should be acceptable for browsing the Internet. For more assistance, see your wireless card's literature. If issues persist even at close range, please contact Belkin Technical Support.

**The Adapter does not perform or connection is unstable when computer has a second built-in wireless network card (such as a mini PCI or Intel® Centrino™).**

This condition occurs if your computer has a built-in wireless card while your Belkin AC Wi-Fi Dual-Band USB Adapter is also active. This happens because Windows must now handle two active wireless connections.

You must disable the built-in wireless card from your computer under "Network Adapters" in the Device Manager.

**The Adapter does not perform or connection is slow when computer has a built-in wired Ethernet card.**

This condition occurs if your computer has an active Ethernet card while your Adapter is also active. This happens because Windows must now handle two active network connections. You must disable the Ethernet card from your computer under "Network Adapters" in the Device Manager.

### What's the difference between 802.11n and 802.11ac?

Currently there are three commonly used wireless networking standards, which transmit data at very different maximum speeds. Each is based on the designation for certifying network standards. The most common wireless networking standard, 802.11n, can transmit information up to 450Mbps; 802.11a also supports up to 54Mbps, but in the 5GHz frequency; and 802.11ac draft specification can connect at up to 1.3Gbps (3x3, 256 QAM). See the following chart for more detailed information.

### Belkin Wireless Comparison Chart

Wireless Technology	G (802.11g)	N150 (1x1 802.11n)	N300 MIMO 802.11n	N750 Dual-Band MIMO 802.11n	AC Wi-Fi Dual-Band USB Adapter
Speed/Data Rate*	Up to 54Mbps*	Up to 150Mbps*	Up to 300Mbps*	Up to 450Mbps*	Up to 867Mbps*
Frequency	Common household devices such as cordless phones and microwave ovens may interfere with the unlicensed band 2.4GHz	Common household devices such as cordless phones and microwave ovens may interfere with the unlicensed band 2.4GHz	Common household devices such as cordless phones and microwave ovens may interfere with the unlicensed band 2.4GHz	Uses both 2.4GHz and 5GHz bands for less interference and better throughput	Uses wider channel bandwidth and higher modulation for a faster connection and greater throughput.
Compatibility	Compatible with 802.11b/g	Compatible with 802.11b/g	Compatible with 802.11n and 802.11b/g	Compatible with 802.11n and 802.11a/b/g	Compatible with 802.11ac draft, 802.11n, and 802.11a/b/g
Advantage	Common—widespread use for Internet sharing	Better coverage and consistent speed and range	Good speed and coverage	High-performance coverage and throughput	Leading-edge, best coverage and throughput available

\*AC link rates require an 11ac access point and are only available on the 5GHz band.

### **Technical Support**

#### **US**

<http://www.belkin.com/support>

#### **UK**

<http://www.belkin.com/uk/support>

#### **Australia**

<http://www.belkin.com/au/support>

#### **New Zealand**

<http://www.belkin.com/au/support>

#### **Singapore**

1800 622 1130

#### **Europe**

<http://www.belkin.com/uk/support>

### FCC Statement

#### DECLARATION OF CONFORMITY WITH FCC RULES FOR ELECTROMAGNETIC COMPATIBILITY

We, Belkin International, Inc., of 12045 E. Waterfront Drive, Playa Vista, CA 90094, declare under our sole responsibility that the product, F9L1106V2, to which this declaration relates, complies with Part 15 of the FCC Rules. Operation is subject to the following two conditions: (1) this device may not cause harmful interference, and (2) this device must accept any interference received, including interference that may cause undesired operation.

Caution: Exposure to Radio Frequency Radiation. The radiated output power of this device is far below the FCC radio frequency exposure limits. Nevertheless, the device shall be used in such a manner that the potential for human contact during normal operation is minimized.

### Federal Communications Commission Notice

This equipment has been tested and found to comply with the limits for a Class B digital device, pursuant to Part 15 of the FCC Rules. These limits are designed to provide reasonable protection against harmful interference in a residential installation.

This equipment generates, uses, and can radiate radio frequency energy and, if not installed and used in accordance with the instructions, may cause harmful interference to radio communications. However, there is no guarantee that interference will not occur in a particular installation. If this equipment does cause harmful interference to radio or television reception, which can be determined by turning the equipment off and on, the user is encouraged to try to correct the interference by one of the following measures:

- Reorient or relocate the receiving antenna.
- Increase the distance between the equipment and the receiver.
- Connect the equipment to an outlet on a circuit different from that to which the receiver is connected.
- Consult the dealer or an experienced radio/TV technician for help.

**FCC Caution:** Any changes or modifications not expressly approved by the party responsible for compliance could void the user's authority to operate this equipment.

For product available in the USA/Canada market, only channels 1~11 can be operated. Selection of other channels is not possible.

This device is going to be operated in 5.15~5.25GHz frequency range; it is restricted in indoor environments only.

### **Federal Communication Commission (FCC) Radiation Exposure Statement**

This EUT is in compliance with SAR for general population/uncontrolled exposure limits in ANSI/IEEE C95.1-1999 and had been tested in accordance with the measurement methods and procedures specified in OET Bulletin 65 Supplement C. This equipment should be installed and operated with a minimum distance of 0.5cm between the radiator and your body.

### **Modifications**

The FCC requires the user to be notified that any changes or modifications to this device that are not expressly approved by Belkin International, Inc., may void the user's authority to operate the equipment.

### **Industry Canada Statement**

This Class B digital apparatus complies with Canadian ICES-3 (B).

*Cet appareil numérique de la classe B conforme à la norme du Canada NMB-3 (B).*

This device complies with RSS-210 of the Industry Canada Rules. Operation is subject to the following two conditions:

1) This device may not cause interference, and

2) This device must accept any interference, including interference that may cause undesired operation of the device.

*Le présent appareil est conforme aux CNR d'Industrie Canada applicables aux appareils radio exempts de licence. L'exploitation est autorisée aux deux conditions suivantes: (1) l'appareil ne doit pas produire de brouillage, et (2) l'utilisateur de l'appareil doit accepter tout brouillage radioélectrique subi, même si le brouillage est susceptible d'en compromettre le fonctionnement.*

For product available in the USA/Canada market, only channels 1~11 can be operated. Selection of other channels is not possible.

*Pour les produits disponibles aux États-Unis/Canada du marché, seul le canal 1 à 11 peuvent être exploités. Sélection d'autres canaux n'est pas possible.*

The device could automatically discontinue transmission in case of absence of information to transmit, or operational failure. Note that this is not intended to prohibit transmission of control or signaling information or the use of repetitive codes where required by the technology.

*Le dispositif pourrait automatiquement cesser d'émettre en cas d'absence d'informations à transmettre, ou une défaillance opérationnelle. Notez que ce n'est pas l'intention d'interdire la transmission des informations de contrôle ou de signalisation ou*

*l'utilisation de codes répétitifs lorsque requis par la technologie.*

The device for the band 5150-5250MHz is only for indoor usage to reduce potential for harmful interference to co-channel mobile satellite systems.

*Les dispositifs fonctionnant dans la bande 5150-5250 MHz sont réservés uniquement pour une utilisation à l'intérieur afin de réduire les risques de brouillage préjudiciable aux systèmes de satellites mobiles utilisant les mêmes canaux.*

The maximum antenna gain permitted for devices in the band 5725-5825MHz shall comply with the e.i.r.p. limits specified for point-to-point and non point-to-point operation as appropriate.

*Le gain maximal d'antenne permis (pour les dispositifs utilisant la bande 5725-5825 MHz) doit se conformer à la limite de p.i.r.e. spécifiée pour l'exploitation point à point et non point à point, selon le cas.*

### **IC Radiation Exposure Statement**

This EUT is in compliance with SAR for general population/ uncontrolled exposure limits in IC RSS-102 and had been tested in accordance with the measurement methods and procedures specified in IEEE 1528. This equipment should be installed and operated with a minimum distance of 0.5cm between the radiator and your body.

*IC sur l'exposition aux radiations cet TUE est la conformité avec le SAR pour la population générale/exposition incontrôlée limites dans IC RSS-102 et avaient été testés conformément aux méthodes et procédures de mesure spécifiée dans la norme IEEE 1528. Cet équipement doit être installé et exploité avec minimum distance 0,5 cm entre le radiateur & votre corps.*

### **Belkin International, Inc., Limited 2-Year Product Warranty**

#### **What this warranty covers.**

Belkin International, Inc. ("Belkin") warrants to the original purchaser of this Belkin product that the product shall be free of defects in design, assembly, material, or workmanship.

#### **What the period of coverage is.**

Belkin warrants the Belkin product for two years.

#### **What will we do to correct problems?**

##### *Product Warranty.*

Belkin will repair or replace, at its option, any defective product free of charge (except for shipping charges for the product). Belkin reserves the right to discontinue any of its products without notice, and disclaims any limited warranty to repair or replace any such discontinued products. In the event that Belkin is unable to repair or replace the product (for example, because it has been discontinued), Belkin will offer either a refund or a credit toward the purchase of another product from Belkin.com in an amount equal to the purchase price of the product as evidenced on the original purchase receipt as discounted by its natural use.

### **What is not covered by this warranty?**

All above warranties are null and void if the Belkin product is not provided to Belkin for inspection upon Belkin's request at the sole expense of the purchaser, or if Belkin determines that the Belkin product has been improperly installed, altered in any way, or tampered with. The Belkin Product Warranty does not protect against acts of God such as flood, earthquake, lightning, war, vandalism, theft, normal-use wear and tear, erosion, depletion, obsolescence, abuse, damage due to low voltage disturbances (i.e. brownouts or sags), non-authorized program, or system equipment modification or alteration.

### **How to get service.**

To get service for your Belkin product you must take the following steps:

1. Contact Belkin International, Inc., at 12045 E. Waterfront Drive, Playa Vista, CA 90094, Attn: Customer Service, or call (800)-223-5546, within 15 days of the Occurrence. Be prepared to provide the following information:
  - a. The part number of the Belkin product.
  - b. Where you purchased the product.
  - c. When you purchased the product.
  - d. Copy of original receipt.
2. Your Belkin Customer Service Representative will then instruct you on how to forward your receipt and Belkin product and how to proceed with your claim.

Belkin reserves the right to review the damaged Belkin product. All costs of shipping the Belkin product to Belkin for inspection shall be borne solely by the purchaser. If Belkin determines, in its sole discretion, that it is impractical to ship the damaged equipment to Belkin, Belkin may designate, in its sole discretion, an equipment repair facility to inspect and estimate the cost to repair such equipment. The cost, if any, of shipping the equipment to and from such repair facility and of such estimate shall be borne solely by the purchaser. Damaged equipment must remain available for inspection until the claim is finalized. Whenever claims are settled, Belkin reserves the right to be subrogated under any existing insurance policies the purchaser may have.



### **How state law relates to the warranty.**

THIS WARRANTY CONTAINS THE SOLE WARRANTY OF BELKIN. THERE ARE NO OTHER WARRANTIES, EXPRESSED OR, EXCEPT AS REQUIRED BY LAW, IMPLIED, INCLUDING THE IMPLIED WARRANTY OR CONDITION OF QUALITY, MERCHANTABILITY OR FITNESS FOR A PARTICULAR PURPOSE, AND SUCH IMPLIED WARRANTIES, IF ANY, ARE LIMITED IN DURATION TO THE TERM OF THIS WARRANTY.

Some states do not allow limitations on how long an implied warranty lasts, so the above limitations may not apply to you.

IN NO EVENT SHALL BELKIN BE LIABLE FOR INCIDENTAL, SPECIAL, DIRECT, INDIRECT, CONSEQUENTIAL OR MULTIPLE DAMAGES SUCH AS, BUT NOT LIMITED TO, LOST BUSINESS OR PROFITS ARISING OUT OF THE SALE OR USE OF ANY BELKIN PRODUCT, EVEN IF ADVISED OF THE POSSIBILITY OF SUCH DAMAGES.

This warranty gives you specific legal rights, and you may also have other rights, which may vary from state to state. Some states do not allow the exclusion or limitation of incidental, consequential, or other damages, so the above limitations may not apply to you.

[belkin.com](http://belkin.com)

© 2012 Belkin International, Inc. All rights reserved. All trade names are registered trademarks of respective manufacturers listed. Windows and Windows Vista are either registered trademarks or trademarks of Microsoft Corporation in the United States and/or other countries.