

Relay Emergency valves are generally used on pre-"121" trailers and in current off-highway braking systems and trailer converter dollies. Like the relay valve, the relay emergency valve is a high capacity, air operated, graduated control valve. In addition, it incorporates an emergency feature which will automatically apply the service brakes in the event that supply air pressure is lost.

The RE-1, RE-4, RE-6 and RE-6NC differ primarily in design, but will easily interchange with one another as well as competitive valves. The new RE-6NC, allows for faster trailer pull-away because of the non-charging feature. FMVSS 121 allows for the release of trailer or dolly brakes before fully charging the reservoir, hence making the RE-6NC a preferred valve. Relay emergency valves can be mounted either directly to the reservoir or remote from the reservoir.

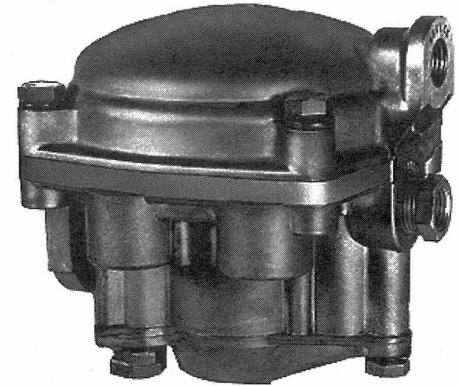
Service Data Sheet: SD-03-1151 (Included: RE-6 and RE-6NC)

VMRS No: 13-10-009

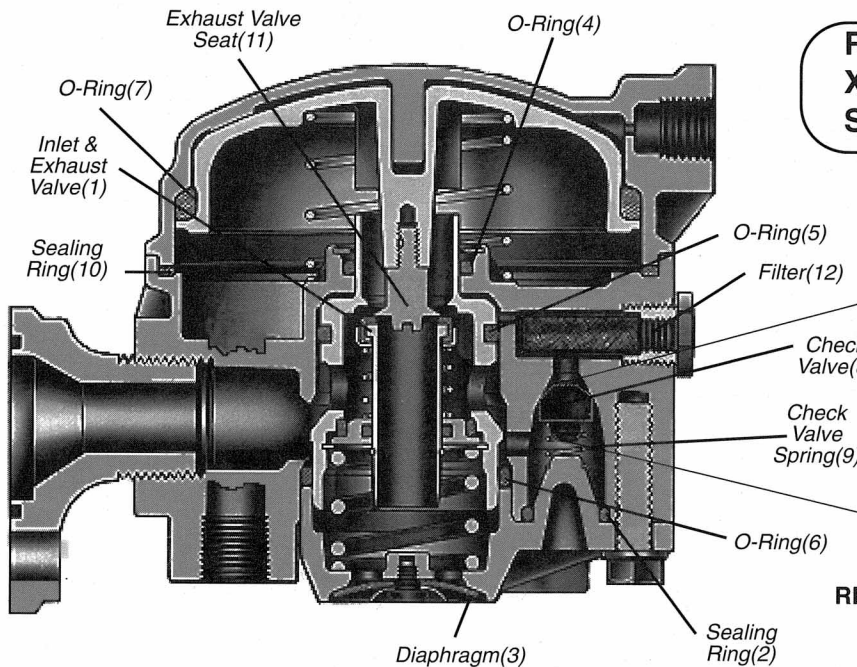
Maintenance Kits:

282812 (Major, Complete Valve)

282813 (Minor, Emergency Piston & Valve Assembly)

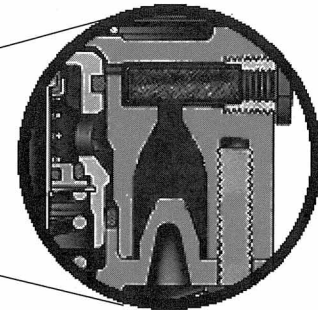


RE-6 & RE-6NC



**RE-6NC SPECIAL
XXXXXX
SVC. REPL. XXXXXX**

RE-6NC Identification Tag



RE-6NC Does Not Have A Check Valve

RE-6

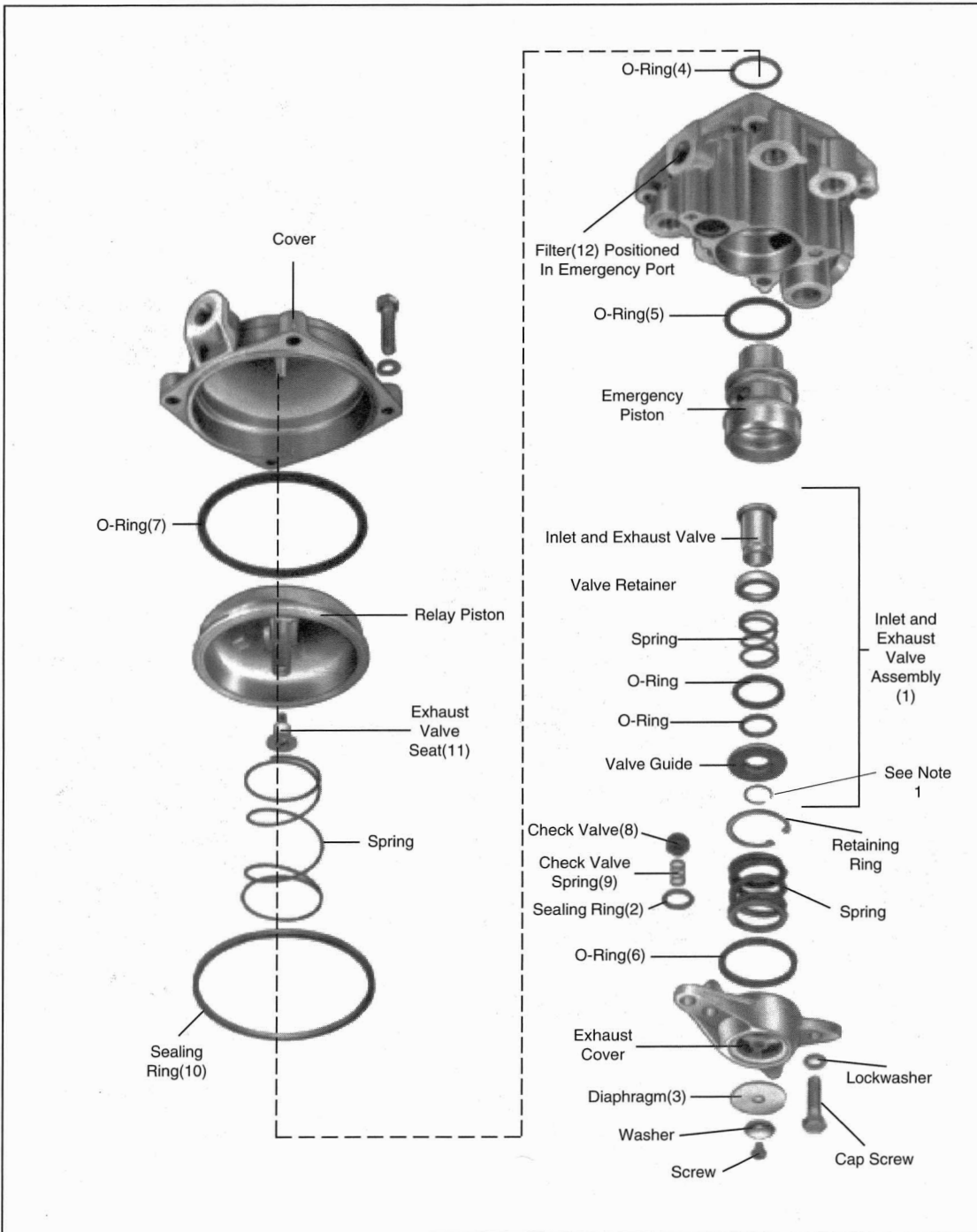
Svc. Piece 281865
Replaces These O.E. Piece No.
281862, 281711, 281861, 281863,
281864, 281865, 281866, 281868,
281869, 281870, 284103

O.E. Piece	SVC. Piece	Comments
284280	284280	*High Pressure RE-6

RE-6NC

O.E. Piece	SVC. Piece	Comments
102168	065449	Bendix PR-3 Reservoir Control Valve Needed
109036	065450	
109049	065451	
109053	065451	
109054	065451	
109059	065449	
109060	065452	
109061	065450	

*Initial emergency application: 65psi
Maximum emergency release pressure: 110psi
System pressure: 135psi



Note 1: The OE production valve does not have this valve retainer. The maintenance kit includes the valve retainer to hold together the inlet/exhaust valve. The inlet/exhaust valve comes as one piece in the maintenance kits.

MINOR KIT CONTENTS 282283

Key No.	Description	Qty.
1	Inlet and Exhaust Valve	1
2	Sealing Ring	1
3	Diaphragm	1
4	O-Ring	1
5	O-Ring	1
6	O-Ring	1

MAJOR KIT CONTENTS 282282

Key No.	Description	Qty.
1	Inlet and Exhaust Valve	1
2	Sealing Ring	1
3	Diaphragm	1
4	O-Ring	1
5	O-Ring	1
6	O-Ring	1
7	O-Ring	1
8	Check-Valve	1
9	Check-Valve Spring	1
10	Sealing Ring	1
11	Exhaust Valve Seat	1
12	Filter	1