

The Stop Light Switch is an electro-Pneumatic switch. Operating in conjunction with the vehicle stop lights and service brake valve, it completes an electrical circuit each time a brake application is made.

For installation and maintenance information, see Instruction and Service Data Sheet SD-06-6.

Weight - 0.23 lbs.

VMRS No. - 34-002-008

Device Code - 1800

The SL-4 is **not** available remanufactured exchange. Parts and/or kits are **not** available.

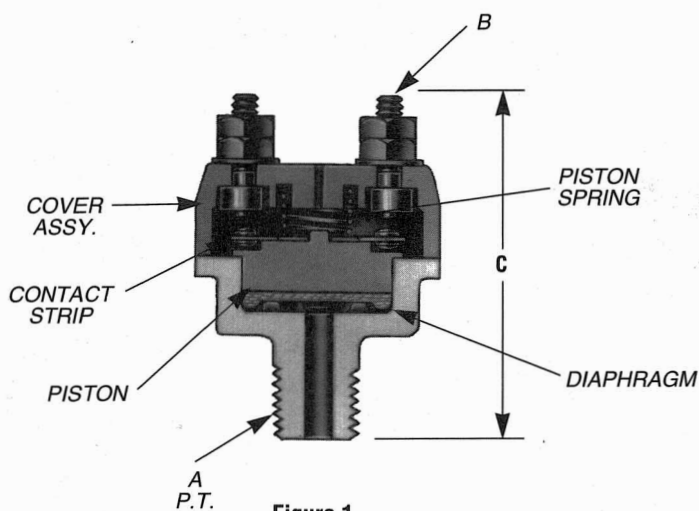
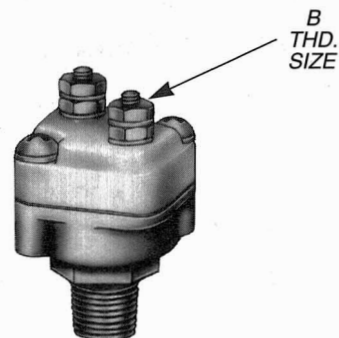


Figure 1

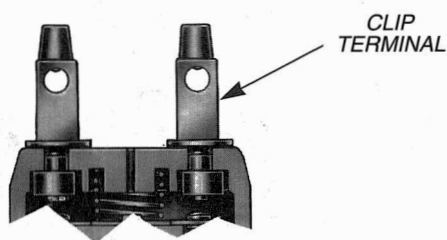


Figure 2

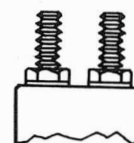


Figure 3

| SERVICE PIECE NO. | A P.T. | B THD. SIZE | C | SEE FIG. FOR TERMINAL TYPE | COMMENTS |
|----------------------|-----------|----------------|------|----------------------------------|----------|
| 103358 | 1/4 | #10-32 | 2.25 | Fig. 3 | — |
| 228600 | 1/4 | #10-32 | 2.25 | Fig. 1 | — |
| 228688 | 1/4 | — | 2.58 | Fig. 2 | — |
| 283012 | 1/4 | #10-32 | 2.25 | Fig. 3 | Ford |
| 285532 | 1/4 | #10-32 | 2.25 | Fig. 1 | Terex |
| 288080 | 1/4 | #10-32 | 2.25 | Fig. 3 | Ford |

Switch to make contact at 5 PSI (nominal).