

Part Number Update

Bulletin No: PNU-184

Effective Date: January 13, 2014 Cancells: NA

Page: 1 of 4

Subject: Bendix® Slack Adjuster Service Replacement Part Numbers Announced

Bendix announces that service Bendix® ASA-5® slack adjusters are being obsoleted and will remain active and saleable only while supplies last. Once the inventory is depleted, all orders placed will be filled by the equivalent Bendix® Versajust® LS™ Slack Adjuster with the WearMax™ Clutch. This Bulletin shows the service Bendix Versajust LS slack adjuster part number replacements, as well some new service Versajust LS slack adjuster units for use with welded clevis chambers. Please use the new part numbers for future orders. See *Part Number Update PNU-186 for OEM replacement part numbers.*

See **Sections A and B** to find the Bendix Versajust LS equivalent replacements for Bendix ASA-5 slack adjusters. See **Section C** for new Bendix Versajust LS slack adjusters.

<p>Bendix® ASA-5® Automatic Slack Adjuster Exterior</p> <p>Bendix® Versajust® LS™ Automatic Slack Adjuster Exterior</p> <p>Part Number Etched Here</p>	<p>Bendix Versajust LS Quick-Connect Style Yoke Kit</p> <p>Adapter Thread</p> <p>Long Pin shown (Short Pin used for welded clevises)</p>	<p>1.3 inches*</p> <p>Yoke</p> <p>Arm Length</p> <p>Lube Fitting (0° shown)</p> <p>Spline (Select by diameter and number of teeth)</p> <p>*Note: Pin Centers are 1.3 inches apart for Versajust LS Slack Adjusters - for ASA-5 Slack Adjusters the distance is 1 inch.</p>
<p>Bendix Versajust LS Easy-On Style Yoke</p> <p>Adapter Thread</p>		
<p>NOTE: ASA-5 and Versajust LS Slack Adjuster YOKES are NOT INTERCHANGEABLE.</p>		

Section A — Service Slack Adjusters WITH Yokes:

Numeric Changeover from Bendix® ASA-5® to Bendix® Versajust® LS™ slack adjuster equivalents.

Obsolete Bendix® ASA-5® Slack Adjuster	Order Bendix® Versajust® LS™ Slack Adjuster
K020316	K041877
K020317	K043197
K022170	K034076
K022171	K047457
K022172	K046175
65163	K102277
65164	K041871
65166	K102419
65167	K051512
65168	K050036
65169	K102424
65170	K041870
65172	K041876
65173	K050081

Obsolete Bendix® ASA-5® Slack Adjuster	Order Bendix® Versajust® LS™ Slack Adjuster
65174	K043197
65175	K041877
65176	K041877
65177	K102371
65178	K102369
65179	K102372
65182	K102369
65221	K102370
65244	K102422
65245	K102427
65247	K043197
65274	K051467
65276	K102428
65306	K102423

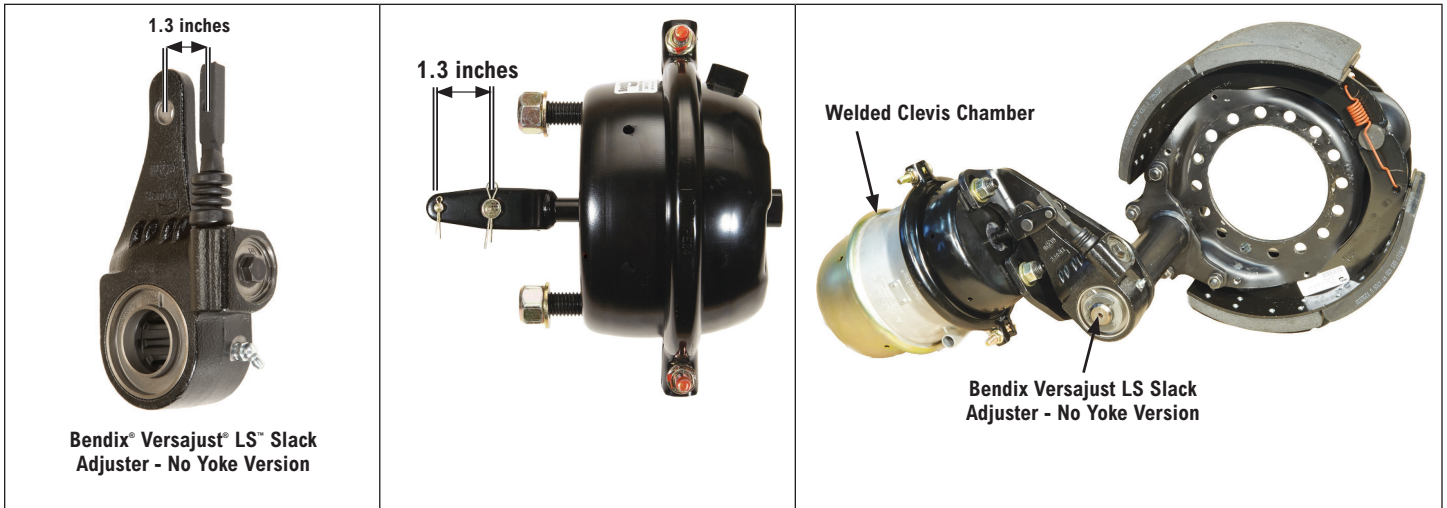
Obsolete Bendix® ASA-5® Slack Adjuster	Order Bendix® Versajust® LS™ Slack Adjuster
65335	K051467
65344	K041876
65403	K051512
65488	K102425
65508	K050079
65700	K041870
801351	K102367
801354	K095826
801355	K102370
801358	K041870
-	K043124 (new)
-	K102426 (new)

**Section B — Service Slack Adjusters WITH Yokes:
Bendix® ASA-5® to Bendix® Versajust® LS™ slack adjuster equivalents by feature.**

■ ALL HAVE A 45 DEGREE LUBE FITTING					
Arm Length	Camshaft Spline (Dia.- Teeth)	Adapter Thread	Yoke Style	Obsolete Bendix® ASA-5® Slack Adjuster Service Part No.	Order Bendix® Versajust® LS™ Slack Adjuster Service Part No.
5.0"	1.25" - 24	1/2"	Easy On	K022172	K046175
			Easy On - 5/8 Offset	65166	K102419
	1.50" - 10	1/2"	Easy On	65168	K050036
		5/8"	Easy On	65508	K050079
	1.50" - 28	1/2"	Easy On	65173	K050081
		5/8"	Quick Connect	801354	K095826
5.5"	1.25" - 10	1/2"	Easy On	065164	K041871
			Easy On- 5/8 Offset	065244	K102422
		5/8"	Easy On- 5/8 Offset	065163	K102277
			Quick Connect	801351	K102367
	1.25" - 24	1/2"	Easy On	065274	K051467
			Easy On- 5/8 Offset	065335	
		5/8"	Easy On- 5/8 Offset	065306	K102423
			Easy On	065167	K051512
	065403				
	1.50" - 10	1/2"	Easy On- 5/8 Offset	065169	K102424
			5/8"	Easy On	801358
		065170			
		065700			
		Easy On- 5/8 Offset		065488	K102425
		1.50" - 28	1/2"	Easy On	065221
	801355				K102370
	5/8"		Easy On	065174	K043197
				065247	
			K020317		
			Easy On- 5/8 Offset	065245	
	Quick Connect	K022170	K034076		
	1.63" - 37	5/8"	Easy On	065178	K102369
				065182	
	6.0"	1.50" - 10	5/8"	Easy On	065172
1.50" - 28		1/2"	Easy On- 5/8 Offset	065276	K102428
		5/8"	Easy On	065175	K041877
				065176	
				K020316	
Quick Connect		K022171	K047457		
1.63" - 37		5/8"	Easy On	065177	K102371
			Quick Connect	065179	K102372

Section C — Service Bendix® Versajust® LS™ Slack Adjusters WITHOUT Yokes

These are for use with welded clevis chambers with 1.3 inch pin-to-pin spacing.



Service New Bendix Versajust LS Slack Adjusters WITHOUT Yokes:

Arm Length	Bendix® Versajust® LS™ Slack Adjuster Service New Part Number	Camshaft Spline (Diameter - Teeth)	Lube Fitting
5.0"	K096197	1.25" - 24	45°
	K096199	1.50" - 10	
	K096198	1.50" - 28	
5.5"	K041770	1.25" - 10	
	K041772	1.50" - 10	
	K041771	1.50" - 28	
6.0"	K041768	1.50" - 10	
	K041769	1.50" - 28	

Section D: Bendix® Versajust® LS™ Slack Adjuster Kits

The pin centers are 1.3 inches apart.

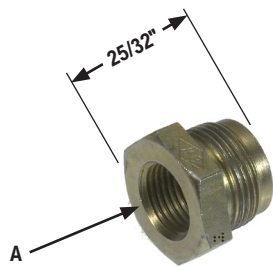


Quick Connect Yoke Kits K041758 includes **both** pins



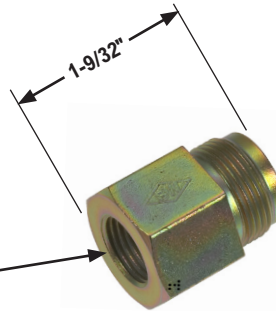
Easy-On Yoke Kit Part No. K154438

NOTE: Bendix® Versajust® LS™ and Bendix® ASA-5® Slack Adjuster YOKES are NOT INTERCHANGEABLE



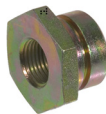
Easy-On Yoke Adapter

Service New Part No.	A Push Rod Thread Size
291452N	5/8"-18 UNF
292756N	1/2"-20 UNF



Easy-On Extended Yoke Adapter

Service New Part No.	A Push Rod Thread Size
297700N	5/8"-18 UNF
297701N	1/2"-20 UNF



Quick Connect Yoke Adapters

1/2" Adapter Kit Part No. 107162
5/8" Adapter Kit Part No. 107161N

Reference Document:

The Service Data Sheet for the Bendix® Versajust® LS™ slack adjuster with the WearMax™ Clutch is SD-05-4630. This document is available for download from the Bendix Document Library at www.bendix.com, or may be ordered from the Marketing Center.

For more information contact your Bendix Account Manager or Plant at 1-800-AIR-BRAKE (1-800-247-2725).



Log-on and Learn from the Best

On-line training that's available when you are –24/7/365.
Visit www.brake-school.com.