

Technical Bulletin

Bulletin No.: PRO-01-22 Effective Date: 11/17/81 Page: 1 of 3

Subject: **New Cylinder Head Design Tu-Flo 700 Compressor**

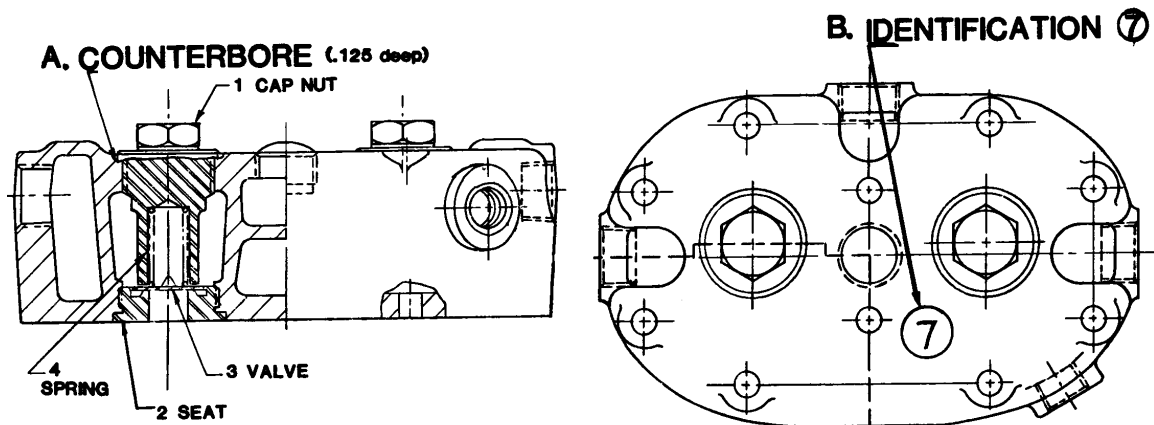
Approximately December 1, 1981 changes will be made in the discharge valve area of all new Tu-Flo 700 Cylinder Heads, which will result in improved compressor performance. Remanufactured Tu-Flo 700 Compressors will be changed on a running basis in the near future.

It is extremely important to identify the cylinder head as new or old design to insure that correct replacement parts are furnished.

I. NEW STYLE CYLINDER HEAD

The new style cylinder head is identified by:

- A. A counterbore (approx. 3/16" deep) of the cylinder head where the cap nut is installed.
- B. A figure "7" with a circle around the figure, stamped or cast into the head surface.



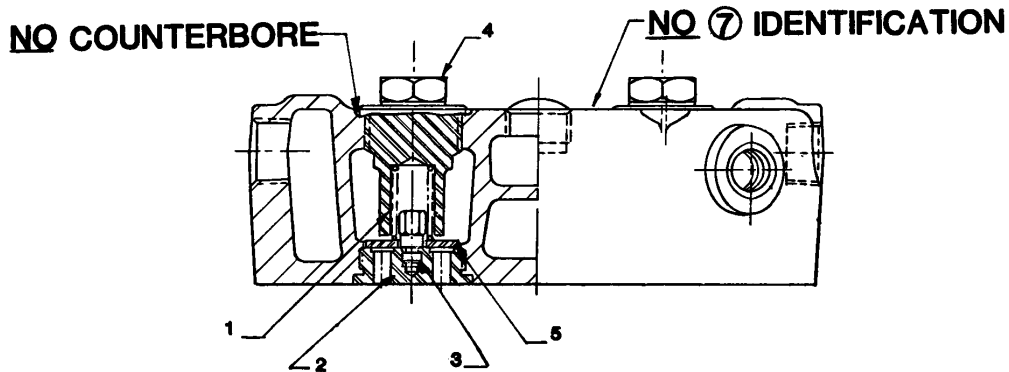
SERVICE REPLACEMENT PARTS
(Replace As Required)

KEY NO.	PC.NO.	DESCRIPTION
1	236215	Cap nut
2	294751 or 237291	Seat
*3	230935	Valve
*4	292375	Spring

*Items 3 and 4 are included in T/F 700 Maintenance Kit Pc. No. 229417 (for T/F 700 compressors new style cylinder head only.)

II. OLD STYLE CYLINDER HEAD

The old style cylinder head can be identified by a shallower 3/32" counterbore and it has no ⑦ identification.

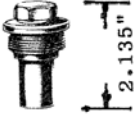






When service replacement of any of the following parts is required, all of the following parts must be removed and should not be reused in the old style cylinder head.

<u>KEY NO.</u>	<u>DESCRIPTION</u>
1	Spring
2	Seat
3	Plug
4	Cap Nut
5	Discharge Valve

When replacing parts, order Pc. No. 102727 Discharge Valve Kit or Pc. No. 289998 Tu-Flo 700 Maintenance Kit.

TU-FLO 700 DISCHARGE VALVE
COMPATIBILITY

PART	OLD STYLE HEAD	NEW STYLE HEAD ⑦
 236215 CAP NUT	YES ONLY WITH 289609 DISCHARGE VALVE ASSEMBLY (NOW OBSOLETE)	YES ONLY WITH 237291 OR 294751 SEAT, 230935 DISCHARGE VALVE AND 292375 SPRING
*  294750 CAP NUT	YES ONLY WITH 237291 OR 294751 SEAT, 230935 DISCHARGE VALVE AND 292375 SPRING	NO USE 236215 CAP NUT WITH 237291 OR 294751 SEAT, 230935 DISCHARGE VALVE AND 292375 SPRING
*292375 OR 210468 SPRING (292375 OBSOLETES AND REPLACES 210468)	YES	YES
 289609 DISCHARGE VALVE ASSY COMPLETE (OBSOLETE, NO LONGER AVAILABLE)	YES ONLY WITH CAP NUT 236215	NO USE 236215 CAP NUT, 237291 OR 294751 SEAT, 230935 DISCHARGE VALVE AND 292375 SPRING
*  294751 or 237291 DISCHARGE VALVE SEAT	YES ONLY WITH 294750 CAP NUT	YES ONLY WITH 236215 CAP NUT AND 230935 DISCHARGE VALVE
*  230935 DISCHARGE VALVE	YES ONLY WITH 294750 CAP NUT AND 237291 OR 294751 SEAT	YES ONLY WITH 236215 CAP NUT AND 237291 OR 294751 SEAT

*These parts are contained in kit 102727 which is to be used to service old style (non ⑦ heads).

KIT 102727 CONTAINS:

2	230935	Discharge Valves
2	292375	Springs
2	294750	Cap Nut
2	294751	Seat

CAUTION!

It is imperative that discharge valve parts from the new and old design cylinder heads not be intermixed. The intermixing of parts will severely impair the performance of the compressor.