

**LED Strip
Owner's Manual
Model #P5536
12V ∴ 0.35A**

**IMPORTANT SAFETY INSTRUCTIONS
READ ALL INSTRUCTIONS**

WARNING: When using outdoor use portable luminaires, basic safety precautions should always be followed to reduce the risk of fire, electric shock, and personal injury, including the following:

No extension cords is allowed.

Keep plug-in power supply and receptacles dry.

Ground Fault Circuit Interrupter (GFCI) protection should be provided on the circuit(s) or outlet(s) to be used for the wet location work light. Receptacles are available having built-in GFCI protection and are able to be used for this measure of safety.

WARNING

IMPORTANT: Do not put the Remote Control in the water, if the remote control falls into water, take it out of the water immediately. Damage to the remote control caused by immersion in the water is not covered under your warranty.



Battery Precaution

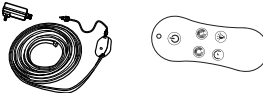
- Do not mix old and new batteries.
- Do not mix the different types of batteries. Do not mix alkaline, standard (Carbon - Zinc), or rechargeable (Nickel - Cadmium) batteries.
- Ensure batteries are installed correctly with regard to polarity (+ and -).
- Do not short-circuit the battery.
- Never attempt to recharge primary batteries as this may cause leakage, fire, or explosion.
- Rechargeable batteries are to be removed from this product before being charged.
- Never attempt to disassemble or open batteries as this can lead to electrolyte burns.
- Remove batteries from equipment which is not to be used for an extended period of time.
- Exhausted batteries are to be removed from this product.
- Do not dispose of product and its batteries in fire. Check your local regulations for proper disposal instructions.
- Batteries shall not be exposed to excessive heat such as sunshine, fire or the similar.
- Keep batteries out of the reach of children.
- Only use 2x CR2032 batteries.

SAVE THESE INSTRUCTIONS

NOTE: Drawings for illustration purpose only. May not reflect actual product. Not to scale.

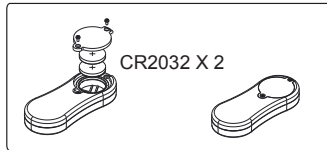
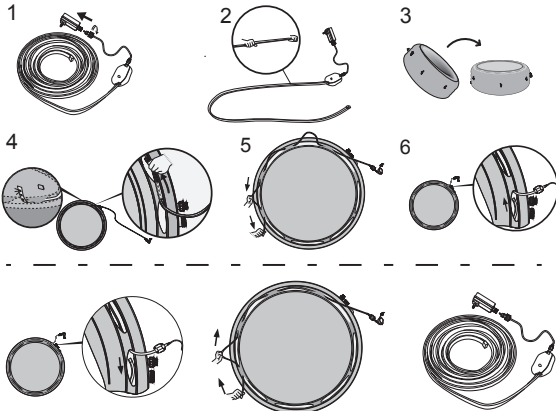
Parts reference overview

LED strip
LED Remote Control
DC output transformer



Follow the instructions to straighten the strip before installing to the SPA.

ATTENTION: DO NOT TWIST OR THE STRIP COULD BREAK
ATTENTION: DO NOT PULL THE STRIP FROM THE CONNECTION



Maintenance tip: Store this product in a dry cool location out of child's reach when not in use for a long time.

This device complies with Part 15 of the FCC Rules. Operation is subject to the following two conditions:

- (1) This device may not cause harmful interference, and
- (2) This device must accept any interference received, including interference that may cause undesired operation.

Attention that changes or modification not expressly approved by the party responsible for compliance could void the user's authority to operate the equipment.

Note: This product has been tested and found to comply with the limits for a Class B digital device, pursuant to Part 15 of the FCC Rules. These limits are designed to provide reasonable protection against harmful interference in a residential installation. This product generates, uses, and can radiate radio frequency energy and, if not installed and used in accordance with the instructions, may cause harmful interference to radio communications. However, there is no guarantee that interference will not occur in a particular installation. If this product does cause harmful interference to radio or television reception, which can be determined by turning the equipment off and on, the user is encouraged to try to correct the interference by one or more of the following measures:

- Reorient or relocate the receiving antenna.
- Increase the separation between the equipment and receiver.
- Connect the equipment into an outlet on a circuit different from that to which the receiver is connected.
- Consult the dealer or an experienced radio/TV technician for help.

**For Remote Control
FCC ID: 2ACGNP5536**