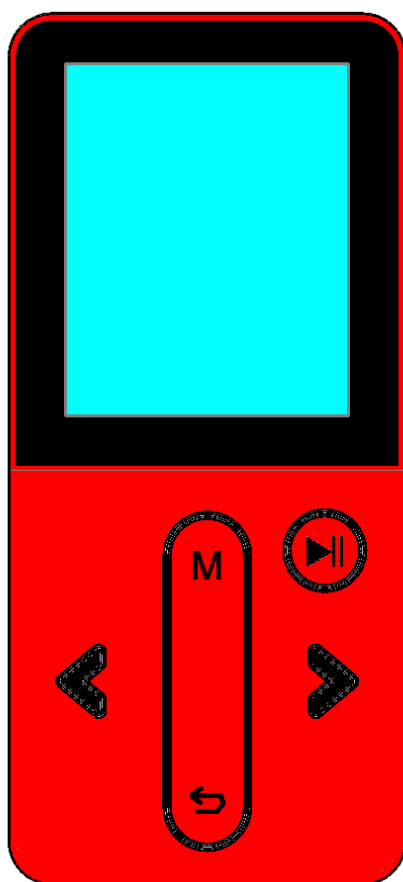


# USER'S MANUAL

Model: BM334BT



**CAUTION:**

Usage of controls or adjustments or performance of procedures other than those specified herein may result in hazardous radiation exposure.

**PRECAUTIONS BEFORE USE**

---

**KEEP THESE INSTRUCTIONS IN MIND:**

1. Do not cover or block any ventilation openings. When placing the device on a shelf, leave 5 cm (2") free space around the whole device.
2. Install in accordance with the supplied user manual.
3. Keep the device away from heat sources such as radiators, heaters, stoves, candles and other heat-generating products or naked flame. The apparatus can only be used in moderate climates. Extremely cold or warm environments should be avoided. Working temperature between 0° and 35° C.
4. Avoid using the device near strong magnetic fields.
5. Electrostatic discharge can disturb normal usage of this device. If so, simply reset and restart the device following the instruction manual. During file transmission, please handle with care and operate in a static-free environment.
6. Warning! Never insert an object into the product through the vents or openings. High voltage flows through the product and inserting an object can cause electric shock and/or short circuit internal parts. For the same reason, do not spill water or liquid on the product.
7. Do not use in wet or moist areas such as bathrooms, steamy kitchens or near swimming pools.
8. The apparatus shall not be exposed to dripping or splashing and make sure that no objects filled with liquids, such as vases, are placed on or near the apparatus.
9. Do not use this device when condensation may occur. When the unit is used in a warm wet room with damp, water droplets or condensation may occur inside the unit and the unit could maybe not work properly; let the unit stand in power OFF for 1 or 2 hours before turning on the power: the unit should be dry before getting any power.
10. Although this device is manufactured with the utmost care and checked several times before leaving the factory, it is still possible that problems may occur, as with all electrical appliances. If you notice smoke, an excessive build-up of heat or any other unexpected phenomena, you should disconnect the plug from the main power socket immediately.

11. This device must operate on a power source as specified on the specification label. If you are not sure of the type of power supply used in your home, consult your dealer or local power company.
12. Keep away from rodents. Rodents enjoy biting on power cords.
13. To clean the device, use a soft dry cloth. Do not use solvents or petrol based fluids. To remove severe stains, you may use a damp cloth with dilute detergent.
14. The supplier is not responsible for damage or lost data caused by malfunction, misuse, modification of the device or battery replacement.
15. Do not interrupt the connection when the device is formatting or transferring files. Otherwise, data may be corrupted or lost.
16. If the unit has USB playback function, the usb memory stick should be plugged into the unit directly. Don't use an usb extension cable because it can cause interference resulting in failing of data.
17. The rating label has been marked on the bottom or back panel of the apparatus.
18. This device is not intended for use by people (including children) with physical, sensory or mental disabilities, or a lack of experience and knowledge, unless they're under supervision or have received instructions about the correct use of the device by the person who is responsible for their safety.
19. This product is intended for non professional use only and not for commercial or industrial use.
20. Make sure the unit is adjusted to a stable position. Damage caused by using this product in an unstable position vibrations or shocks or by failure to follow any other warning or precaution contained within this user manual will not be covered by warranty.
21. Never remove the casing of this apparatus.
22. Never place this apparatus on other electrical equipment.
23. Do not allow children access to plastic bags.
24. Only use attachments/accessories specified by the manufacturer.
25. Refer all servicing to qualified service personnel. Servicing is required when the apparatus has been damaged in any way, such as the power supply cord or the plug, when liquid has been spilled or objects have fallen into the apparatus, when the apparatus has been exposed to rain or moisture, does not operate normally, or has been dropped.

26. Prolonged exposure to loud sounds from personal music players may lead to temporary or permanent hearing loss.

27. If the product is delivered with power cable or AC power adaptor :

- If any trouble occur, disconnect the AC power cord and refer servicing to qualified personnel.
- To completely disconnect the power input, the mains plug of the apparatus shall be disconnected from the mains, as the disconnect device is the mains plug of apparatus.
- Don't step on or pinch the power adaptor. Be very careful, particularly near the plugs and the cable's exit point. Do not place heavy items on the power adaptor, which may damage it. Keep the entire device out of children's reach! When playing with the power cable, they can seriously injure themselves.
- Unplug this device during lightning storms or when unused for a long period.
- The socket outlet must be installed near the equipment and must be easily accessible.
- Do not overload ac outlets or extension cords. Overloading can cause fire or electric shock.
- Devices with class 1 construction should be connected to a main socket outlet with a protective earthed connection.
- Devices with class 2 construction do not require a earthed connection.
- Always hold the plug when pulling it out of the main supply socket. Do not pull the power cord. This can cause a short circuit.
- Do not use a damaged power cord or plug or a loose outlet. Doing so may result in fire or electric shock.

28. If the product contains or is delivered with a remote control containing coin / cell batteries:

Warning:

- "Do not ingest battery, Chemical Burn Hazard" or equivalent working.
- [The remote control supplied with] This product contains a coin / button cell battery is swallowed, it can cause severe internal burns in just 2 hours and can lead to death.
- Keep new and used batteries away from children.
- If the battery compartment does not close securely, stop using the product and keep it away from children.

- If you think batteries might have been swallowed or placed inside any part of the body, seek immediate medical attention.

#### 29. Caution about the use of Batteries:

- Danger of explosion if battery is incorrectly replaced. Replace only with the same or equivalent type.
- Battery cannot be subjected to high or low extreme temperatures, low air pressure at high altitude during use, storage or transportation.
- Replacement of a battery with an incorrect type that can result in an explosion or the leakage of flammable liquid or gas.
- Disposal of a battery into fire or a hot oven, or mechanically crushing or cutting of a battery, that can result in an explosion.
- Leaving a battery in an extremely high temperature surrounding environment that can result in an explosion or that leakage of flammable liquid or gas.
- A battery subjected to extremely low air pressure that may result in an explosion or the leakage of flammable liquid or gas.
- Attention should be drawn to the environmental aspects of battery disposal.

#### INSTALLATION

- Unpack all parts and remove protective material.
- Do not connect the unit to the mains before checking the mains voltage and before all other connections have been made.



**WARNING:** When participating in the traffic listening to a personal music player can make the listener less aware of potential dangers such as approaching cars.



**WARNING:** To prevent possible hearing damage, do not listen at high volume levels for long periods.

## 1. Get to know the controls on Player

---

Item	Description
1	TFT LCD Display
2	<b>M</b> Button (Menu)
3	▶   Button (On/Off, Play/Pause)
4	◀ Button (Previous/Fast-Rewind)
5	▶ Button (Next/Fast-Forward)
6	↶ Button (Previous Menu/Exit)
7	Microphone Position (mono, inside USB port)
8	Micro USB Port (PC Connection/Charge)
9	Micro SD Memory Card Slot
10	Earphone Output Jack (3.5mm Stereo)
11	— Button (Volume Down)
12	+ Button (Volume Up)

## 2. About Player Battery

Player has an internal, non–user-replaceable battery. For best results, the first time you use player, let it charge for about 2 ~ 3 hours or until the battery status icon in the “**Connect**” screen shows that the battery is in full.



### Battery is full

***Note:** Player may continue use battery power after it's been turned off. For maintain the battery life and performance, if unit isn't used for a while, the battery need to be recharged, recharging the battery at least once per month.*

**Warning:** better use the original USB cable delivered with your MP3 player. This cable is a data and charging cable. Some other USB cables in the market are charging only cables. If you use a charging only cable to transfer data from your computer to your player, it will only show the battery symbol on the screen and will not be detected by your computer as an external drive; this means that you cannot transfer any files from your computer to your MP3 player.

### Note :

The player contains a built-in temperature monitor sensor. If it senses that the battery pack temperature is not in good condition it will control and stop the charging function. The charging function will be automatically restored when the detected battery pack temperature returns to within normal limits.

### a. Charging the Battery:

You can charge the player battery in two ways:

- Connect player to your computer. Or,
- Use the USB power charger. (***not included***)

### b. Connection and Charging:

- Once you have connected player with computer/power charger, then you will see the “**Choose connection**” screen appear to choose and it will switch to “**Charge & Transfer**” mode automatically if no action in 4 ~ 6 seconds.

- Choose **“Charge & Transfer”** to upload or download the media files with your computer and charging the Player’s battery.
- Choose **“Charge & Play”** to operates the Player’s function and the battery charging in background.
- The level bars are running in battery icon at the connecting screen. The battery is in charging.



## In Charging

***Important:*** The battery does not charge when your computer is in sleep. The USB port on most keyboards does not provide enough power to charge the player. Connect player to a USB 2.0 port on your computer only to prevent charge problem.

### 3. Connecting and Disconnecting Player

#### a. To Connecting Player:

- To connect player to your computer, plug the connector of USB Cable into a USB port on your computer, and connect the other end to player,
- Then the player is ready for media files transfer with your computer and the battery is charging when **“Charge & Transfer”** mode is selected. And the **“Connect”** screen is appearing for view.
- Now you can transfer the media files by using the computer mouse use drag and place, or copy and paste, in between the player and your computer.

#### b. To Disconnecting Player:

It’s important not to disconnect player while it’s syncing or transferring files. Eject the player before disconnect it.

- To eject player, press once the **M** button, the connecting



screen will switch to **“Main Menu”** screen. And now is safe to disconnect the player with your computer. Unplug the USB cable from the player. Or,


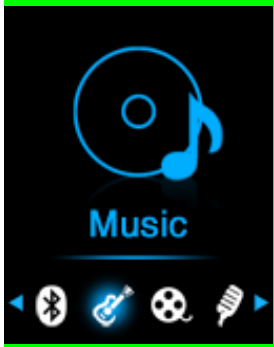

- If you’re using a Windows PC, you can also eject player in My Computer or by clicking the **“Safely Remove Hardware”** icon in the Windows system tray, select the correspondence name of USB Device and choose **“Stop”** > choose **“Confirm”** > choose **“Confirm”** follow by the pop-up windows you’re your computer.
- If you’re using a Mac, you can also eject player by dragging the player icon on the desktop to the Trash.
- Disconnect the USB cable from the player and computer, simply remove it.
- If you accidentally disconnect player without ejecting it, reconnect it to your computer and sync again. However, some media file may loss.



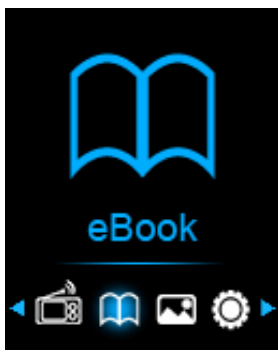
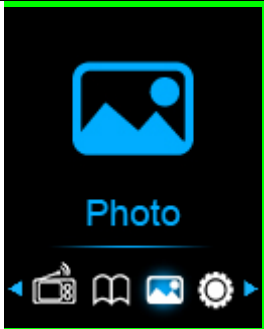

#### 4. Getting Start the Player

**Turn ON/OFF the player and use of Main Menu:**

- To turn ON the player, press and hold the ►|| button for 2 ~ 3 seconds, then you will see any one of the following shown Main Menu screen, **“Bluetooth/Music/Movie/Record/FM Radio/eBook/Photo/Setup”**, will appear on LCD after the Loading and Opening screen have displayed.
- To turn OFF the player, press and hold the ►|| button for 2 ~ 3 seconds.

#### **“Main Menu”**

◀ Bluetooth ▶	◀ Music ▶	◀ Movie ▶
		

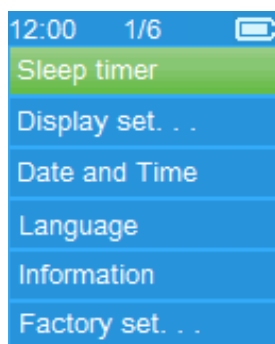
◀ Record ▶	◀ FM Radio ▶	◀ eBook ▶
		
◀ Photo ▶	◀ Setup ▶	
		

## 5. Use Setup Menu

You might need to set date & time or change some default setting as you desired in setup menu before you start to use the player.

- To go into setup menu, from main menu, choose “**Setup**” by using the ◀/> and ▶|| buttons, a “**Setup**” menu appears to use;
- For back to previous menu or main menu, press or pressing the ↶ button during in setup menu and submenu.

### Setup Menu



#### a. Sleep timer:

- In Setup menu, choose “**Sleep timer**”, by using the ◀/> and ▶|| buttons then choose “**Off**” to switch off it. ( factory default is “Off”)

- In Setup menu, choose **“Set sleep timer”** to switch On the sleep timer, a levels bar with number appear to use, then choose **“1 ~ 99”** (Minutes) as you want by using the **</>** and **▶||** buttons.
- The Player will turn off itself automatically as your desired time set.

#### **b. Display settings:**

You can set the backlight to illuminate the screen for a certain amount of time as you desired, or make the backlight to “always On” when every time you turn ON the player.

- In Setup menu, choose **“Display settings”** > choose **“Backlight timer”**, a list appear to use, then chose **“Always On/ 10/20/30 seconds”** as you desired by using the **</>** and **▶||** buttons. Choose **“Always On”** to prevent the LCD backlight from turning to off. (choosing this option decrease battery performance)
- Choose **“Screen saver”** > choose **“Digital clock”** or **“Screen off”** to turn On and Off the screen saver function. Chosen digital clock to display the date and time when the screen saver if in On.

#### **c. Date & Time:**

- In Setup menu, choose **“Date and time”** by using the **</>** and **▶||** buttons, a list appears to use.

#### **Set Time**

- Choose **“Time settings”** to set clock, then choose **“Set time format”** or **“Set time”** as you want;
- Choose **“Set time format”** then choose **“12 Hours/24 Hours”** show format as you desired.
- Choose **“Set time”**, a clock interface will appear to set;
- The **“Hour/Minute”** set item is highlighted, press **M** button to switch in between Hour and Time which you want to set. And adjusting hour and minute to current time by pressing the **</>** button.
- Finally, you need to press the **▶||** button to confirm the adjustment and the screen will back to previous menu.

#### **Set Date**

- Choose **“Date settings”** to date, then choose **“Set date format”** or **“Set date”** as you want;
- Choose **“Set date format”** then choose **“YYYY MM DD/DD MM YYYY”** which format as you desired.

- Choose “**Set date**”, a date interface will appear to set;
- The “**YY/MM/DD**” set item is highlighted, press **M** button to switch in between day, month and year which you want to set. And adjusting them to current date by pressing the **</>** button.
- Finally, you need to press the **▶||** button to confirm the adjustment and the screen will back to previous menu.

#### **d. Language:**

This player can use difference OSD languages.

- To set the language, choose “**Language**”, and then choose which language as you desired by using the **</>** and **▶||** buttons.

#### **e. Information:**

You can view about the player information and disk memory status, such as firmware version, remaining memory space available and the number of support media files available in player.

- In Setup menu, choose “**Information**” by using the **</>** and **▶||** buttons, a list appears to use.
- Choose “**Player information**” or “**Disk space**” which you want to view.

#### **f. Factory Settings:**

- In Setup menu, choose “**Factory settings**”, a dialog “**Restore factory settings?**” will pop up to confirm;
- Choose “**Yes**” to confirm. Or, “**No**” to abort.
- Press **↶** button to exit Setup menu.

## **6. Use Bluetooth Menu**

### **Bluetooth Audio Transmission**

#### **To Turn On the Bluetooth Function:**


- From the main menu, choose the Bluetooth menu by using **<** / **>** and **▶||** buttons, a Bluetooth sub menu appears.

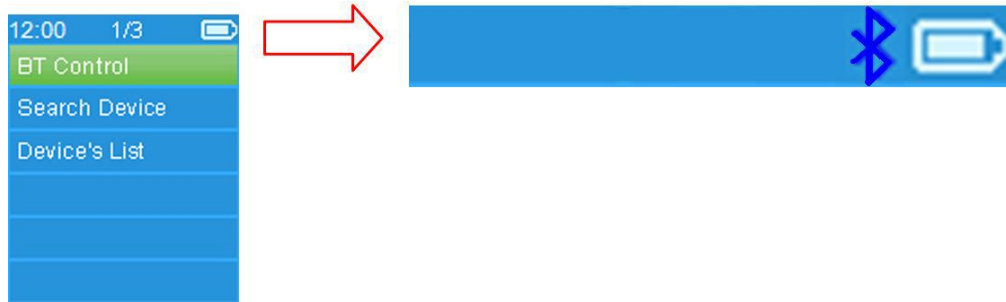
#### **Search and Pair Bluetooth device.**

**NOTE: Before pairing, please make sure your Bluetooth Receiver Device supports the Bluetooth A2DP profile.**

- Keep the device within a 1 meter range of your Bluetooth receiver device. Power it On and set it into searching / pairing mode;
- Turn the BT On in “**BT Control**” menu.
- Then, in the Bluetooth list menu choose “**Search Device**” by

using the < / > and ► buttons, the device will start searching for approximately 10 ~ 20 seconds. Devices found will be listed on the screen.

- Choose your device from the on screen list and choose **“Pair / connect”** by using the < / > and ► button. The screen is switched back to BT now playing screen and a Bluetooth icon “” will show on the display indicating the Bluetooth connection is ok. If the connection is lost the color of the Bluetooth symbol will change to red.



- Choose **“Folders & songs”** in the Music menu list to directly select your favorite music.
- The player will switch to the **“Now Playing”** screen. You now can select Previous / Next / Play / Pause and adjust volume by using the < / >, ► and + / – buttons.
- To exit the Bluetooth Transmission function, press the ↵ button until you see the main menu icons. Select the Bluetooth menu. Select ‘BT control’ from the list and select ‘Turn BT off’.

### **Bluetooth Function notes:**

- *When using the Bluetooth audio transmitting mode, the players earphone output will be turned off automatically;*
- *There is no fast-forward/ backward function in Bluetooth mode.*

## **7. Use Music Menu**

You can use this music player to playback with almost full format of music file of audio coding. To open the music player in Main Menu:

- From main menu, choose **“Music”** by using the </> and ► buttons, a list menu appears to use;
- Choose **“Folders & songs/Artists/Albums/Genres/Playlist / Update Playlist”** as you desired;
- Choose **“Folder & songs”** to enter all folders and songs list menu to select you desired folder and song where start the

play.

- Choose **“Artists”** to enter folder(s) list menu grouping by Artist name, then choose who name of Artist folder > choose a song file in list where start the play.
- Choose **“Albums”** to enter folder(s) list menu grouping by Album name, then choose who name of Album folder > choose a song file in list where start the play.
- Choose **“Genres”** to enter folder(s) list menu grouping by Genres name, then choose who name of Genres folder > choose a song file in list where start the play.
- Choose **“Playlists”** > choose **“Playlist on the go [1] / Playlist on the go [2] / Playlist on the go [3]”** > select a song file where start to play. (Add song files into playlist before you can use it, see “add to playlist” section of the “Music submenu” part on page 16 for methods)
- Choose **“Update playlist”** to update the playlist when you found it show incorrect; actually, it is normal due to some media files could be manual deleted in player’s memory by user in some case. However, update the playlist when necessary.

#### **To switch Local Folder or Card Folder for Playback**

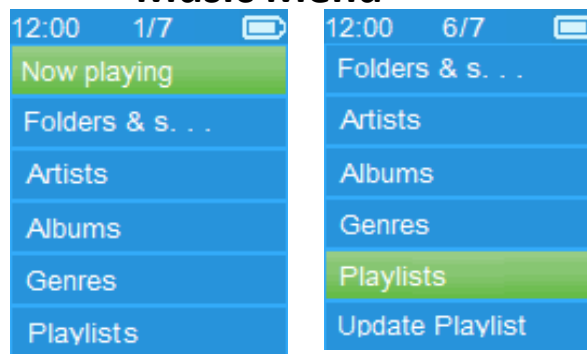
- The **“Local Folder”** and **“Card Folder”** items will be existed only in music menu when Micro SD card has plugged into the player;
- Choose **“Local Folder”** to use player’s internal memory as current location, you will see all supported song files will list out in playlist when item selected. Or,
- Choose **“Card Folder”** to use Micro SD Card memory as current location, you will see all supported song files will list out in playlist when item selected. However, a “Create list or not” will appear to confirm when every time the Micro SD Card is plug in and used. Choose “Yes” to process, a playlist will be generated for use. Choose “No” to abort.
- Then, use **“Folders & songs”** Use “Folder & songs” item to select song file for playback in normal case.

#### **Remark:**

*All songs listed in Local Folder or Card Folder, the player’s system treated them as only a single folder.*

*If you select song in this folder, in this case, the repeat folder function of play mode will playback all them.*

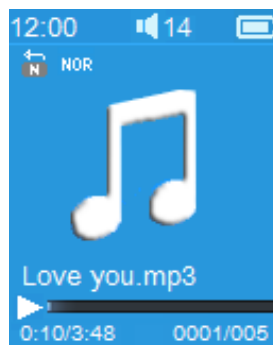
## “Music Menu”



### a. Play Music

- In “**Folders & songs/Artists/Albums/Genres**” list menu, choose a song file to start the play using by using the </> and ►| buttons. Then the music “Now playing” interface will appear to view and use;

## Now Playing



### b. Play/Pause

- In music now playing interface;
- Press the ►| button to pause the playing music. Press it again to resume.

### c. Next/Fast-forward and Previous/Fast-backward

- Press the ► button to play next music.
- Press the ◀ button to play previous music.
- Press and hold the ► button to use fast-forward
- Press and hold the ◀ button to use fast-backward.

### d. Adjust volume level

- Press or pressing +/– button to adjust volume levels to up/down and a volume control screen is appear for viewing.
- Wait for 6 ~ 8 seconds or press the ↺ button to return to music now playing screen.
- **For hearing protection;** a display warning pop-up on display screen, when first time to increase the volume level and reach

to the default setting level which may exceed 85dB. Press the **M** button to accept the warning and enter into the volume control for increase the level and until to maximum level.

### Use Lyric Display

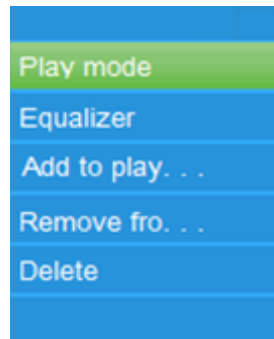
This player supports “\*.LRC” lyric files and lyrics can synchronous displayed while playing music if you music file has lyric file included together.

- Make sure the music file name and the “\*.LRC” file name must be same and upload into player together. The embedded lyric song file will not display lyric.
- When the playing music included with lyrics file, then the lyrics display mode will switched on automatically and the lyrics will display at the music now playing interface.

### 8. Use Music Submenu

- In music now playing interface, press the **M** button to enter to music submenu, a music submenu “**Play mode/Equalizer/add to playlist / remove from playlist Delete**” is appear to choose;

#### Music Submenu Menu



#### a. Play mode:

- In Music submenu;
- Choose “**Play mode**”, a list menu “**Repeat/Shuffle**” appears to use;
- Choose “**Repeat**” > choose “**Repeat Off/Repeat 1/Repeat all/Repeat folder**” as you desired play mode by using the </> and ► buttons.
- Choose “**Shuffle**” > choose “**Off/On**” as you desired.

#### b. Equalizer

- In Music submenu, Choose “**Equalizer**”, then choose “**Normal/Rock/Funk/Hip hop/Jazz/Classical/Techno**” as you desired sound effect by using the </> and ► buttons.



Note : The equalizer function don't work when using a Bluetooth earphone/headphone. Only when using a cabled device the equalizer function will work.

**c. Add to playlist**

- When playing a song you would like to add to a playlist, press the "M" button and use the ◀◀ / ▶▶ keys to go to the "add to playlist" option and select with ▶▶. Then you can select the playlist you want to add this song to;
- Repeat the above steps to add more songs to your playlist(s)
- To use the playlist you made. Select "playlist" on the main menu and then select your favorite playlist

NOTE: It is possible to manually create a playlist for use with your mp3 player. You can use MediaMonkey for Windows computer. This is a freeware mp3 manager/player in which you can create your own playlists. The **BM334BT** is compatible with .M3u playlist files. Instructions on how to create playlists can be found on the website from MediaMonkey. You can find the information and download MediaMonkey from [www.mediamonkey.com](http://www.mediamonkey.com)

**d. Remove from playlist**

- When you are playing music from the playlist and want to remove the current song from the list the you press the "M" button
- Select "**Remove from playlist**" and select the playlist you're currently using.
- A dialog screen will appear
- Choose "Yes" to confirm or choose "No" to abort.
- Repeat the above steps if you want to remove more music files from the playlist.

**e. Delete:**

- In Music submenu, choose "**Delete file**" by using the ◀/> and ▶▶ buttons;
- A "**song name...**" delete? dialog is appear to confirm, choose "Yes" to confirm delete the current song file in memory;
- A "**deleting**" dialog is appears for few seconds and the current song file is deleted. And the next song's file is selected to play automatically.
- Choose "**No**" to abort.

**9. Use Movie Menu**

#### a. **Play Video**

- From Main Menu, choose “**Movie**” by using the </> and ► buttons, a files list appears to choose;
- Choose the desired file to start the play and the screen switch to movie now playing screen. The movie is playing automatically.

#### b. **Play/Pause Video**

- In movie now playing screen, press the ► button to pause.
- Press it again to resume.
- Press ↶ button to go back files list screen for choose another movie file to play if you want it.

#### c. **Play Previous or Next file**

- Press the ► button to play next file.
- Press the < button to play previous file.

#### d. **Fast-Forward or Fast-Backward**

- Press and hold the ► button to play fast-forward.
- Press and hold the < button to play fast-backward.

#### e. **Adjust Volume Level**

- In movie now playing screen,
- Press or pressing the + button to increase the volume level.
- Press or pressing the – button to decrease the volume level.
- Wait for 6 ~ 8 seconds or press the ↶ button to return to movie now playing screen.
- **For hearing protection;** a display warning pop-up on display screen, when first time to increase the volume level and reach to the default setting level which may exceed 85dB. Press the **M** button to accept the warning and enter into the volume control for increase the level and until to maximum level.

**Note:** Activate volume will pause the video. Play will resume and at no key input after 6 seconds.

### **10. Use Movie Submenu**

You might need to change the play mode or delete some unwanted movie files. To do this:

- In movie now playing screen, press the **M** button, a movie submenu “**Repeat/Delete Movie/Update Playlist**” is appear to choose;

#### a. **Repeat:**

- Choose “**Repeat**” > choose “**Repeat off/Repeat 1/Repeat all**” as you desired play mode by using the </> and ► buttons.

#### **b. Delete Movie:**

- Choose **“Delete Movie”** by using the </> and ►|| buttons;
- A “video name...” delete? dialog is appear to confirm, choose **“Yes”** to confirm delete the current song file in memory;
- A **“deleting”** dialog is appears for few seconds and the current song file is deleted. And the next movie’s file is selected to play automatically.
- Choose **“No”** to abort.

#### **c. Update playlist:**

- Choose **“Update playlist”** to update the playlist when you found it show incorrect; actually, it is normal due to some media files could be manual deleted in player’s memory by user in some case. However, update the playlist when necessary.

### **11. Convert Video files into AMV/AVI**

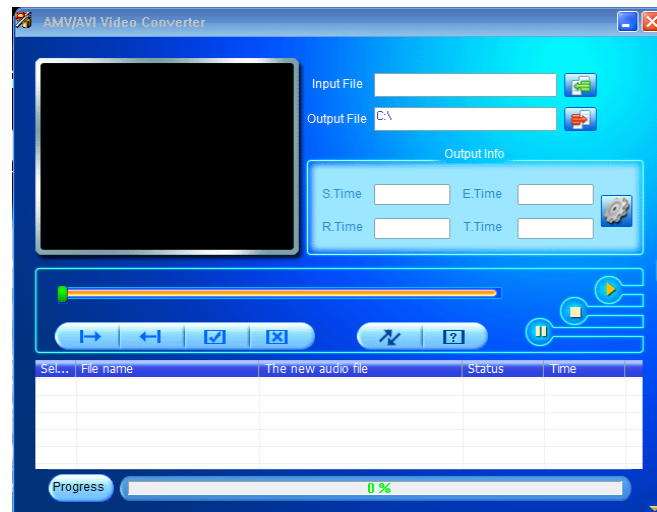
**Important:** For Video Converter, please make sure you have installed Microsoft DirectX 9.0 or above in your computer. When to convert Real Media, QuickTime, MPEG format video files, please install related DirectShow filter at first. Otherwise, AVI Converter cannot work normally.



For Media Manager in Windows XP and Windows 2003, please make sure you have installed Microsoft Media Player 10.0 or above, and Microsoft .NET framework 3.0.

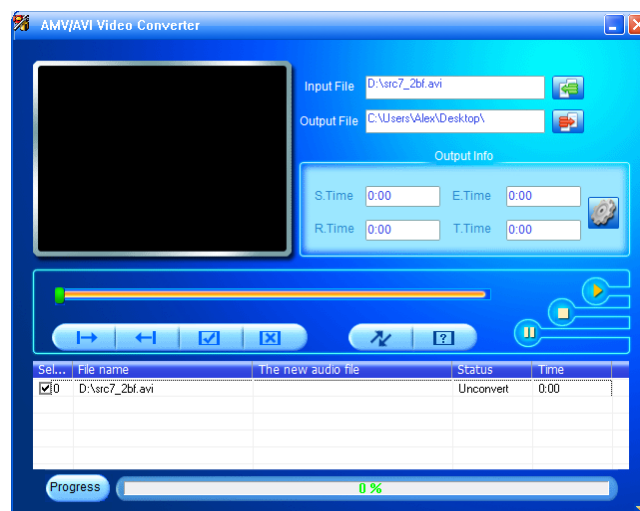
If your video file is different or you found format error, convert it to the correct format through the included “AMV&AVI Video converter” as follows. This tool can be used to transform those video files into AMV/AVI format files on the computer before upload them to your player. Recommended use AMV for avoids video codec issues on your computer.




- To install this video convert tool to your computer, open a folder named **“UTILITIES > Video Conversion Software”** which stored in your player’s internal memory. (Download it onto your computer for copy and installation)
- Select **“Setup”** to start the install program, the software will automatically install to your computer.
- After installation is done, open folder **“Media Player Utilities x.xx” > click program “AMV&AVI Video converter”** in All Program bar on your window PC. The program interface as

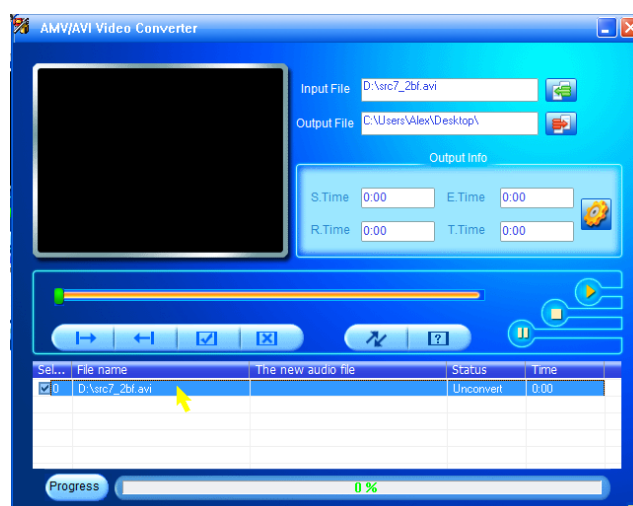
shown below:




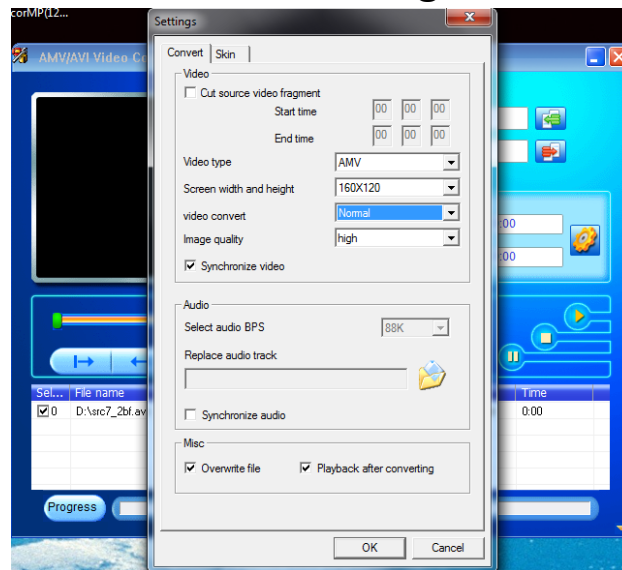
- Then click  to choose the folder where to save the convert files, and then click  to select the folder where the original files are. The original file will show in the file window once selected.




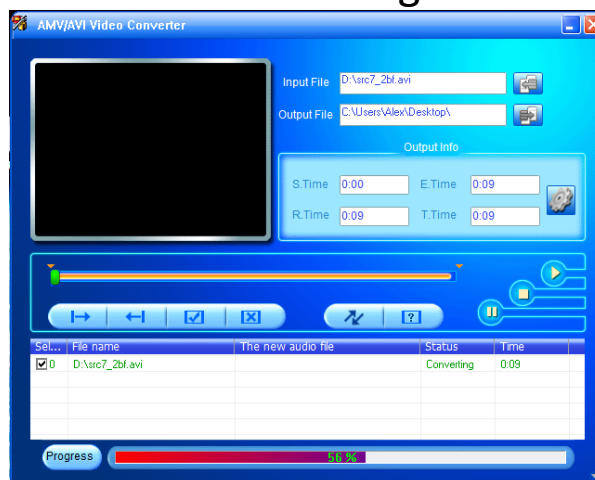
- Move the mouse arrow and left click mouse on the unconverted source files to select with highlight in the file window, then the  icon will be highlighted into  icon. Now click this  icon and a dialog box will be shown.



- Now click this  icon and a dialog box will be shown.



- Make sure Video type is **“AMV/AVI”** and screen width and height is **“160x120/320x240”** selected. Video convert and Image quality should be **“Normal”** and **“High”** as defaulted. Click **“OK”** to confirm the setting.
- Now click  to start converting.



- After conversion, the converted files will play automatically for preview if AMV format has selected.
- And now, the converted AMV/AVI file is ready to transfer, you can simply copy and place those converted files to the media player.

**Note:** Only pixels in **“160x120/320x240 (max.)”** can be supported by this player.

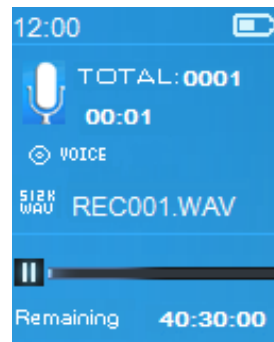
## 12. Use Record Menu

You can use the player as a Voice Recorder and recording voice memos using the built-in microphone. Besides, look for the

recorded file(s) and playback them in same menu. To do this:

- From main menu, choose **“Record”** by using </> and ►|| buttons, a list menu appear to choose;
- a. **Start Voice Recording:**
- From list menu, choose **“Start Voice Recording”**, a **“Now Recording”** screen appear to view and it is in recording.

### Now Recording Screen



### To Start/Pause Recording

- In recording mode, press the ►|| button to pause the recording.
- Press the ►|| button again to resume recording.

### To Save and Stop Recording File

- Press the ↵ button, a **“save recording?”** dialog pop up to confirm;
- Choose **“Yes”** to confirm, the recorded file will save into memory and back to the list menu for next action.
- Choose **“No”** to abort.

### b. Recordings Library: (Playback Recorded file)

- From list menu, choose **“Recordings Library”**, a list menu appear to choose;

### For delete all recorded files from Player’s

- Choose **“Delete All”** to remove all the recorded files from the Player’s memory if you wish. Once choose it, a dialog pop to confirm.
- Choose **“Yes”** to delete all files. Or, choose **“No”** to abort.

### For playback recorded file(s)

- From list menu, choose a desired recorded file (RECxxx.\*) to start the play by using the </> and ►|| buttons;
- The screen will switch to **“Library Now Playing”** and the selected file will start to play.

### Play/Pause file

- In library now playing interface;
- Press the ► button to pause the playing file. Press it again to play.

### **Next/Fast-forward and Previous/Fast-backward Song file**

- Press the ► button to play next file.
- Press the ◀ button to play previous file.
- Press and hold the ► button to use fast-forward
- Press and hold the ◀ button to use fast-backward.

### **Adjust volume level**

- Press or pressing the +/- button to adjust volume levels to up/down and a volume control screen is appear for viewing.
- Wait for 6 seconds or press the ↩ button to return to music now playing screen.

### **For delete current playing file**

- In library now playing screen, press **M** button to call submenu, then choose “**Delete**” by using the </> and ► buttons;
- A “RECxxx.\*” delete? dialog is appear to confirm, choose “**Yes**” to confirm delete the current playing file in memory;
- A “**deleting**” dialog is appears for few seconds and the current playing file is deleted. And the next file is selected to play automatically.
- Choose “**No**” to abort.

### **c. Record Settings:**

- From list menu, choose “**Record Settings**” > Choose “**Set REC bitrate**”, a list menu appear to choose;
- Choose “**512kbps/768kbps/1024kbps/1536kbps**” if WAV record format is chosen.

**Remark:** higher number of kbps will higher the recording quality but will use more memory capacity in recording file.

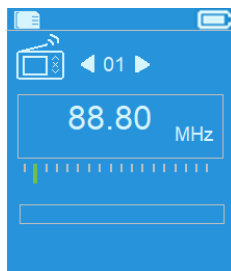
## **13. Use FM Menu (Radio)**

This player is using the wire of earphone set as antenna for FM radio, plug in the earphone set into the earphone output jack. The radio function can not be used in Bluetooth mode!

- From main menu, choose “**FM**” by using </> and ► button, a “**Radio Tune**” screen appears to use.
- In radio tune screen, press “**M**” button to call up the FM Radio menu, a list screen “**Start FM radio recording/Presets/Save to preset/Clear preset/Auto tune/FM REC libray**” is appears to use.

- Press </> button to choose one of them and then press ► button to entering

### “Radio Tune” Screen



#### a. Start FM radio recording

- In FM Radio menu, choose **“Start FM radio recording”** to enter the FM record function under in the radio mode, the screen will switch to Now Recording screen.
- Press ► button to start the FM recording. Press ► button again to pause the FM recording if you want.
- Press ↵ button to stop the FM recording and choose yes and press for save into memory, the “Saving” dialog box appears for seconds. The file is saved and the screen will switch back to Radio Tune automatically.

#### b. Presets

- Choose **“Presets”** in FM Radio menu, the preset no. **“01-30”** will appear on the display, using </> and ► button to choose your desired preset number

#### c. Save to preset (manual tune)

- Press </> button for searching down/up to receive next station, each press will step down/up by 0.05MHz. Press </> button quickly until to your desired radio frequency of radio station.
- Choose **“ Save to Presets”** in FM Radio menu, the preset no. **“01-30”** will appear, choose your desired preset number to store the tuned radio frequency.

#### d. Clear preset

- Choose **“Clear Preset”** or **“Clear all presets”** in FM Radio menu, the preset no. **“01-30”** will appear, using </> and ► button to choose your delete preset number, choose “Yes” to delete and Choose ↵ button to abort.

#### e. Auto tune

- Choose **“Auto tune”** in FM Radio menu, the FM will auto searching the radio from 87.5MHz ~ 108MHz and auto stored in preset list.

#### f. FM REC libray



- Choose **“FM REC libray”** in FM Radio menu for playback the FM recording files.

### **Delete**

- For delete the REC file, using </> and **“M”** button to choose the desired delete REC file, press ► to select **“Yes”** to delete or **“No”** for abort  
or
- Choose **“Delete All”** in **“FM REC libray”**, press ► to go to delete menu, using </> and ► button to choose **“Yes”** to delete or **“No”** for abort

## **14. Use EBook Menu**

You can use the player as a text reader with supported file format (.TXT). To open EBook:

- From main menu, choose **“EBook”** by using the </> and ► buttons, a file(s) list menu appears to choose;

### **Play EBook file**

- Choose a file which you want to start the read.
- Press the ↩ button to go back to list menu for other file selection.

### **Change previous/next page in file**

- In EBook play mode;
- Press the ► button to next page.
- Press the < button to previous page.

### **Auto page flip**

- Press the ► button to enter into auto page flip function, the reading page will flip according to desired time set of play settings in submenu.
- Press the ► button to cancel the auto page flip function.
- Pressing the ↩ button to back to main menu.

## **15. Use EBook Submenu**

You might need to change some settings for EBook read. To change setting:

- In file list menu or EBook playing mode, press **“M”** button to call up the EBook submenu, a list **“Play settings/Delete eBook/Bookmark Select/Delete bookmark/Add bookmark/Page select”** appear to choose;

### **a. Play settings:**

- Choose **“Play settings”**, a levels bar with number appear to

use, then choose **“02 ~ 30”** (seconds) as you want by using the **</>** and **▶||** buttons.

- The EBook reading page will auto flip according the selected time gap here when you activated the auto page flip function.

**b. Delete eBook:**

- Choose **“Delete”**, a **“file name.\*”** delete? dialog is appear to confirm, choose **“Yes”** to confirm delete the selected file or current reading file in memory;
- A **“deleting”** dialog is appears for few seconds and the current playing file is deleted. If in file playing, the next file is selected to play automatically.
- Choose **“No”** to abort.

**c. Bookmark Select:**

- Choose **“Bookmark select”** by using the **</>** and **▶||** buttons, a bookmarked list appear to choose;
- Choose a stored bookmark which you want to call and then press the **▶||** button to read. (add bookmark(s) before you use it.

**d. Delete Bookmark:**

- Choose **“Delete Bookmark”**, a bookmarked list appear to choose;
- Choose a bookmark file which you to delete, then a **“Whether to delete?”** dialog is appears to confirm;
- Choose **“Yes”** to confirm. Or, choose **“No”** to abort.

**e. Add Bookmark:**

- In eBook reading mode, choose **“Add Bookmark”**, a **“Whether to add?”** dialog is appear to confirm;
- Choose **“Yes”** to confirm and the current reading page will bookmark into list and stored in memory for use when the bookmark select function.
- Choose **“No”** to abort.

**f. Page Select: (goto page)**

- Choose **“Page Select”**, a list menu appear to choose;
- Choose your desired number of page where go to by using the **</>** and **▶||** buttons, the page will direct to desired page from current reading page.
- However, system defaulted range of number can be selected is limited, which mean you may not go into the exactly number of page.

**Remark:** For example;  $P\_1 = \text{page } 1 : p\_5 \times 10 = \text{page } 50 : P\_68 \times 10$

= page 680, please refer to the appeared list in Page Select function.

## 16. Use Photos Menu

You can use the player as picture/photo viewer, to browse file:

- From main menu choose **“Pictures”** by using the </> and ► buttons, a list menu appear to use;
- a. **Play Pictures file**
  - In list menu, choose a file to start the play.
  - Press the ↩ button to go back to list menu for other file selection.
- b. **Change previous/next file**
  - Press the ► button to next file.
  - Press the < button to previous file.
- c. **Slideshow play**
  - Press the ► button to enter into slideshow mode, those picture files will play file by file according to slideshow settings in submenu.
  - Press the ► button to cancel the slideshow mode.
  - Pressing the ↩ button to back to main menu.

## 17. Use Photos Submenu

You might need to change some settings for picture browse. To change setting:

- In file list menu or picture playing mode, press the **M** button to call up the photo submenu, a list **“Slideshow settings/Delete picture/Update Playlist”** appear to choose;

### a. Slideshow settings:

#### Time per slide

- Choose **“Slideshow settings”** > Choose **“Time per slide”**, a levels bar with number appear to use, then choose **“02 ~ 30”** (seconds) as you want by using the </> and ► buttons.

#### Repeat

- Choose **“Repeat”** > choose **“Off/On”** as you desired. The repeat all files function will activate if **“On”** is chosen.

### b. Delete picture:

- Choose **“Delete picture”**, a **“file name.\*”** delete? dialog is appear to confirm, choose **“Yes”** to confirm delete the selected file or current playing file in memory;
- A **“deleting”** dialog is appears for few seconds and the current

playing file is deleted. If in file playing, the next file is selected to play automatically.

- Choose **“No”** to abort.

**c. Update Playlist:**

- Choose **“Update Playlist”** to update the playlist when you found it show incorrect; actually, it is normal due to some media files could be manual deleted in player’s memory by user in some case. However, update the playlist when necessary.

## **18. Use Memory Card Slot**

This player allows you to play those support media files from your Micro SD memory card (T-Flash). Also it will increase the mobile hard disk memory capacity of the player if you use this option.

### **To Play From Memory Card:**

- Turn Off the player. Now insert your Micro SD memory card into the memory card slot on side of player.
- Turn On the player and now the Micro SD memory card, T-Flash, is ready to use.
- When Micro SD Card has been inserted, then two items **“Local Folder”** and **“Card Folder”** will be existed for choose.
- Go into the card folder and choose you desired folder(s) and file(s) to play.
- To take out the Micro SD memory card, please turn Off the player before you do.

## **19. Reset the Device**

In some circumstances, the device may encounter dead halt during use.

- In case the player is in hanging,
- Press and hold the ►|| button for about 8 ~ 10 seconds, the player should be reset and restarted.

**Important:** Do not reset the device if it is proper working.

## **20. Trouble Shooting**

Unit cannot turn ON	<ul style="list-style-type: none"><li>• Check battery is it charged with enough energy.</li></ul>
No sound is heard from headphone.	<ul style="list-style-type: none"><li>• Check whether Volume is set “0” and connect the headphone plugs firmly.</li><li>• Check whether the headphone plug is</li></ul>

	dirty. <ul style="list-style-type: none"> <li>Corrupted MP3 may make a static noise and the sound may cut off. Make sure that the music files are not corrupted.</li> </ul>
Characters in LCD are corrupted	<ul style="list-style-type: none"> <li>Check whether the right language has been selected.</li> </ul>
Download of media files fails.	<ul style="list-style-type: none"> <li>Check whether USB cable is damaged and is connected properly.</li> <li>Check whether driver is installed correctly.</li> <li>Check whether the player's memory is in full.</li> </ul>

## 21. Specification

Dimension	90.5mm (H) x 41.5mm (W) x 9.4mm (D)	
Weight	28.5g (approximate)	
LCD	1.8 inches, Resolution (RGB) 128 x 160	
Earphone Impedance	32 Ohm	
Internal Memory	Not Applicable	
Memory Card Slot	Micro SD Card (support up to 16GB and possible for 32GB)	
Battery	Lithium 3.7V, 250mAh	
	Playing Time: 12 ~ 14 hours for music at power saving mode 3 ~ 4 hours for movie 3.5 ~ 4.5 Hours for Bluetooth Transmission at power saving mode	
Power Source	DC Input: DC 5V 500mA/0.5A	
Bluetooth	Specification	V2.1 + EDR
	Frequency	2.402 ~ 2.480GHz
	RF Transmit Power	Class II
	Audio Transmission	MP3, WMA, WAV, etc.... format files
	Connection Distance	In 10 meters (open area)

Audio	Earphone Output	2mW x 2 at 32 Ohm
	Freq. Responses	20Hz - 20000Hz
	SNR	> 80dB
Radio	Receiving Range	FM: 87.5 – 108MHz
Music Format	MP3, WMA	32Kbps - 320kbps
	APE, FLAC, WAV	
Video/Movie	AMV/AVI	160x120/ 320x240 (max.)
Recorder Coding	WAV	
Picture Format	JPEG/BMP/GIF	
EBook Format	TXT	
Operating Temperature	0 to 40°C	
Operating System	Window 2000/XP/Vista/Win7 or higher; Mac 9.2 or Higher	

## 22. Disclaimer

Updates to Firmware and/or hardware components are made regularly. Therefore some of the instruction, specifications and pictures in this documentation may differ slightly from your particular situation. All items described in this guide for illustration purposes only and may not apply to particular situation. No legal right or entitlements may be obtained from the description made in this manual.

## 23. Disposal of the Old Device



This symbol indicates that the relevant electrical product or battery should not be disposed of as general household waste in Europe. To ensure the correct waste treatment of the product and battery, please dispose them in accordance to any applicable local laws of requirement for disposal of electrical equipment or batteries. In so doing, you will help to conserve natural resources and improve standards of environmental protection in treatment and disposal of electrical waste (Waste Electrical and Electronic Equipment Directive).

This device complies with Part 15 of the FCC Rules. Operation is subject to the following two conditions: (1) this device may not cause harmful interference, and (2) this device must accept any interference received, including interference that may cause undesired operation

NOTE: This equipment has been tested and found to comply with the limits for a Class B digital device, pursuant to Part 15 of the FCC Rules. These limits are designed to provide reasonable protection against harmful interference in a residential installation. This equipment generates, uses and can radiate radio frequency energy and, if not installed and used in accordance with the instructions, may cause harmful interference to radio communications. However, there is no guarantee that interference will not occur in a particular installation. If this equipment does cause harmful interference to radio or television reception, which can be determined by turning the equipment off and on, the user is encouraged to try to correct the interference by one or more of the following measures:

- Reorient or relocate the receiving antenna.
- Increase the separation between the equipment and receiver.
- Connect the equipment into an outlet on a circuit different from that to which the receiver is connected.
- Consult the dealer or an experienced radio/TV technician for help.

Warning: changes or modifications not expressly approved by the party responsible for compliance could void the user's authority to operate the equipment