

Quick Installation Guide

Model:BL-WA730RE
300Mbps Universal WiFi Range Extender

Open Source Code

This product includes software codes developed by third parties. These software codes are subject to either the GNU General Public License (GPL), Version 2, June 1991 or the GNU Lesser General Public License (LGPL), Version 2.1, February 1999. You can copy, distribute, and/or modify in accordance with the terms and conditions of GPL or LGPL.

The source code should be complete, if you want us to provide any additional source code files under GNU General Public License (GPL), please contact us. We are committed to meeting the requirements of the GNU General Public License (GPL). You are welcome to contact us local office to get the corresponding software and licenses. Please inform us your contact details (full address) and the product code. We will send you a CD with the software and license for free.

Please refer to the GNU GPL Web site for further information.
<http://www.gnu.org/licenses/licenses.en.html>.

Introduction:

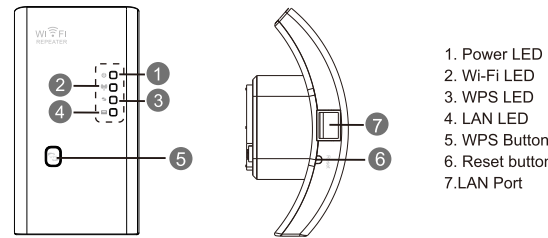
The Wi-Fi Repeater is a combined wired/wireless network connection device designed specifically for small business, office, and home office networking requirements. It allows a wireless network to be expanded using multiple access points without the need for a wired backbone to link them. It also works well with other 11b/g and 11n protocol wireless products.

Package Contents

Before you starting to use this router, please check if there's anything missing in the package, and contact your dealer of purchase to claim for missing items:

- 1 x Wi-Fi Repeater
- 1 x RJ-45 Networking Cable
- 1 x Quick Installation Guide

Hardware Overview



Default Parameters

Default IP: 192.168.16.254
 URL: <http://ap.setup>
 Login Name: admin
 Password: admin

Wireless SSID: **B-LINK_XXXXXX**
 Wireless Key: **no**

NOTE: If you need to **Reset** the Wi-Fi Repeater, you need press and hold the reset button inside the tiny hole for **8** seconds

Getting Started

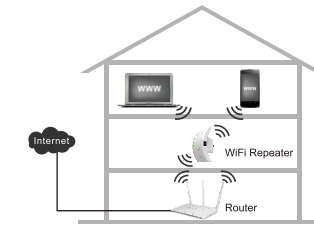
Setting up a Wireless Infrastructure Network

For a typical wireless setup at home (as shown below), please do the following:

Wireless Repeater Mode

You will need Wi-Fi AP/Router Internet access

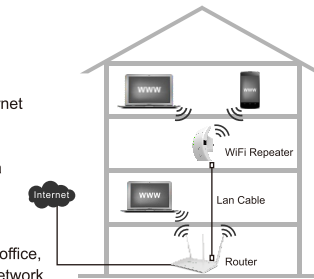
The Wi-Fi Repeater copies and reinforces the existing wireless signal to extend the coverage of the signal. **Don't change** the network's name (SSID) and password **yet**. This mode is especially useful for a large space to eliminate signal-blind corners. **So this mode is fit** for large house, office, warehouse or other spaces where the existing signal is weak.



Wireless AP Mode

You will need broadband Router Internet access

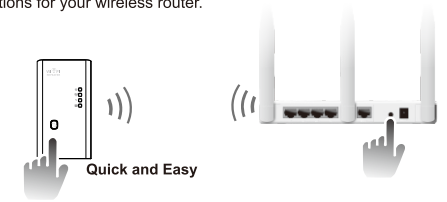
The Wi-Fi Repeater is connected to a wired network **then** transforms the wired Internet access into wireless so that multiple devices can share the Internet. **So this mode is fit** for office, home and places where only wired network is available.



Configure the Wi-Fi Repeater Mode

Configure the Wi-Fi Repeater Mode with WPS Button.

This is the easiest way to configure the Wi-Fi Repeater. First, check whether your wireless router supports WPS. For further details, please read the operating instructions for your wireless router.



Note: This method is not supported on **Product B**

1. Plug the Wi-Fi Repeater into a wall socket.
2. Press the WPS button on the Wi-Fi Repeater for at least **6** seconds. The WPS LED now flashes for approx. 2 minutes.
3. Within these 2 minutes, please Press the WPS button of your Wireless Router directly for 2 - 3 seconds. (For further details, please read the operating instructions for your wireless router.)

The Wi-Fi Repeater then automatically connects to your wireless router and copies wireless key of the settings.

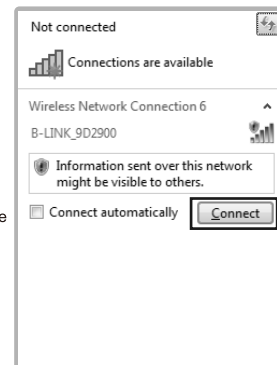
The Wi-Fi Repeater can be accessed via the SSID and the wireless key of your wireless router.

01

You can configure the Wi-Fi Repeater Mode by connecting it with your computer/laptop with enclosed RJ45 cable or wirelessly

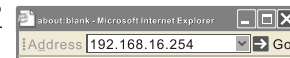
A. Configure the Wi-Fi Repeater Mode wirelessly.

A1. Plug the Wi-Fi Repeater into a wall socket.



A2. Click on the network icon (or) on the right bottom of your desktop. You will find the signal from the WiFi-Repeater. Click on 'Connect' then wait for a few seconds.

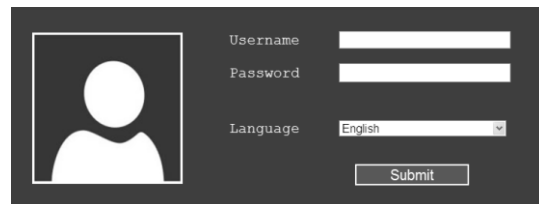
A3. Open web browser and type <http://192.168.16.254> or <http://ap.setup> in the browser address box. This number is the default IP address for this device.



Note: Please check whether the Wi-Fi Repeater accord with factory default settings once you can't entered <http://192.168.16.254>. If you are still not sure what reasons, you can reset the Wi-Fi Repeater, just need to press the **reset** button for **8** seconds, then try again.

02

A4. The login screen below will appear. Enter the User Name and Password then click "**Submit**" to login. The default User name is "**admin**" and Password is "**admin**".



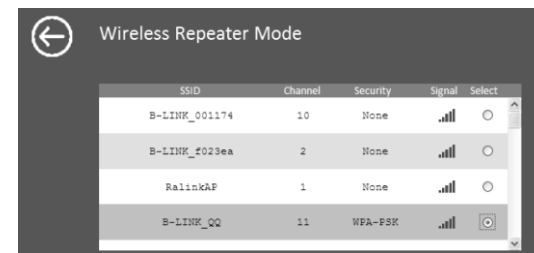
A5. After logging in, you will see the web page below: Click on the **Repeater** button in the Wizard field.



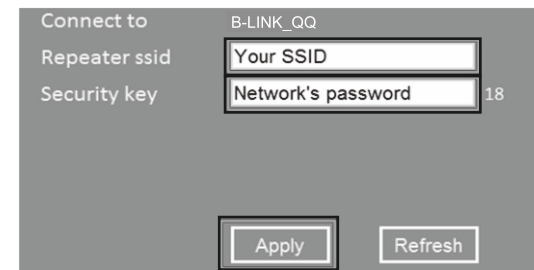
06

03

A6. From the list, select a wireless network with which you want to connect the AP/Router by choosing the corresponding network in the "**Select**" field.



A7. After having selected a wireless network, you must then specify the network key of your wireless router for Security key.



After completing the entry, click on the "Apply" button.

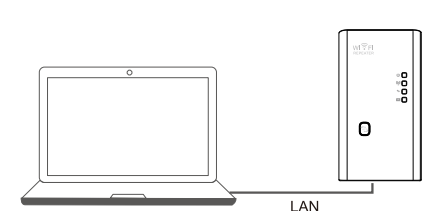
After the reboot has been completed, the Wi-Fi Repeater is accessible under the SSID and the Wireless key of your wireless router.

07

04

B. Configure the Wi-Fi Repeater Mode with RJ45 Cable.

1. Plug the Wi-Fi Repeater into a wall socket.
2. Connect your computer / laptop with the Wi-Fi Repeater with RJ45 Cable.

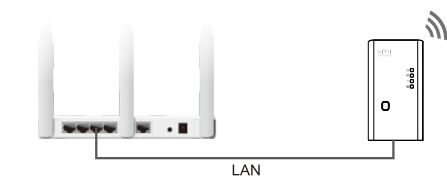


3. Follow process A3 to A7 to configure your Wi-Fi Repeater.

08

Configure the Wireless AP Mode.

Use the AP Mode to obtain a "wireless access point". The wireless end devices will connect to the Wi-Fi Repeater in this mode. You can also use this mode, for example, to make a formerly non-wireless-enabled router wireless-enabled.

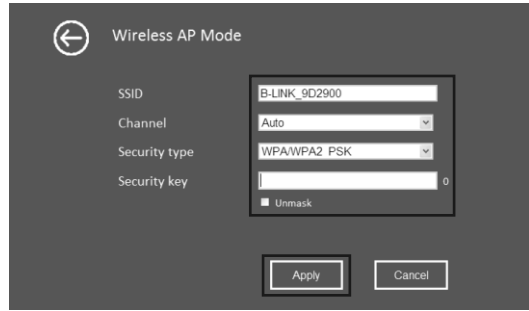


1. Plug the Wi-Fi Repeater into a wall socket.
2. Follow process A2 to A4.
3. After logging in, you will see the web page below: Click on the AP button in the Wizard field.



09

The following message will be displayed on your web browser:



SSID	Wireless SSID of the Wi-Fi Repeater
Security type	Setup the wireless security and encryption to prevent from unauthorized access and monitoring. Supports 64/128-bit WEP, WPA, WPA2, WPA/WPA2 encryption methods.
Security key	The "Password" of the Wi-Fi Repeater

Click on 'Apply' button, The Wi-Fi Repeater will restart.

After the reboot has been completed, the Wi-Fi Repeater is accessible under the SSID and the Wireless key.

Configuring via Web Browser

Connect to the Wi-Fi Repeater, Open web browser and type <http://ap.setup> or <http://192.168.16.254> in the browser address box.

Wireless Base Configuration

Please follow the following instructions: Click "**Wireless -> Basic Settings**" located at the web management interface, the following message will be displayed on your web browser:



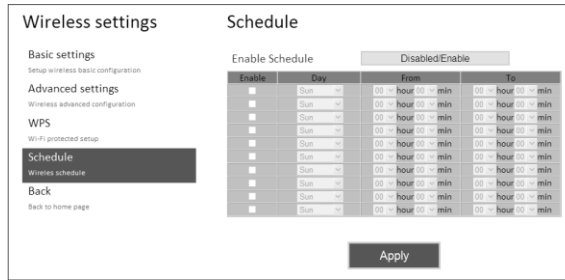
Wireless Enable	Wireless On/Off
SSID	Wireless SSID of the Wi-Fi Repeater
Channel	Auto (recommend)
Security type	Setup the Wireless security and encryption to prevent from unauthorized access and monitoring. Supports 64/128-bit WEP, WPA, WPA2, WPA/WPA2 encryption methods.
Security key	The "Password" of the Wi-Fi Repeater

Click 'Apply' button, The Wi-Fi Repeater will restart.

Wireless Schedule

Please follow the following instructions: Click "Wireless -> Schedule" located at the web management interface, the following message will be displayed on your web browser:

You could configure the Wireless Schedule setting of Wireless settings.



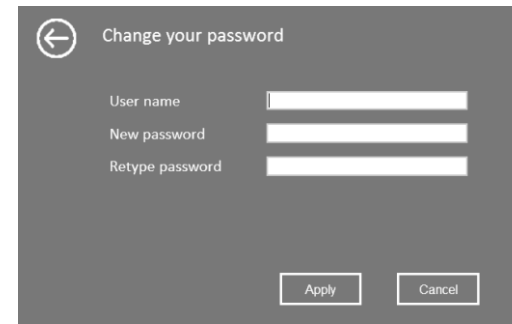
You could configure the Wireless Schedule Disable or Enable. **Enable Schedule:** You can set operation times for your wireless network.

Click 'Apply' button, The Wi-Fi Repeater will save the settings.

Change Management password

Default password of Wireless Repeater is "**admin**", and it's displayed on the login prompt when accessed from web browser. There's a security risk if you don't change the default password, since everyone can see it. This is very important when you have wireless function enabled.

To change password, please follow the following instructions: Please click '**Management -> Password**' menu on the web management interface, the following message will be displayed on your web browser:



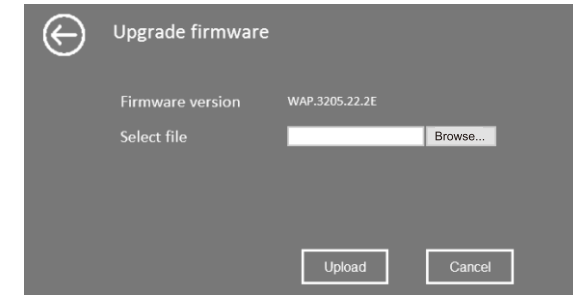
If you want to keep original password unchanged, click 'Cancel'.

Click 'Apply' button, The Wi-Fi Repeater will log off.

Firmware Upgrade

The system software used by this router is called as 'firmware', just like any applications on your computer, when you replace the old application with a new one, your computer will be equipped with new function. You can also use this firmware upgrade function to add new functions to your router, even fix the bugs of this router.

Please click '**Management-> Upgrade Firmware**' located at the web management interface, and then the following message will be displayed on your web browser:



Click 'Browse...' or 'Choose File' button first; you'll be prompted to provide the filename of firmware upgrade file. Please download the latest firmware file from our website, and use it to upgrade your router.

After a firmware upgrade file is selected, click '**Upload**' button, and the router will start firmware upgrade procedure automatically. The procedure may take several minutes, please be patient.

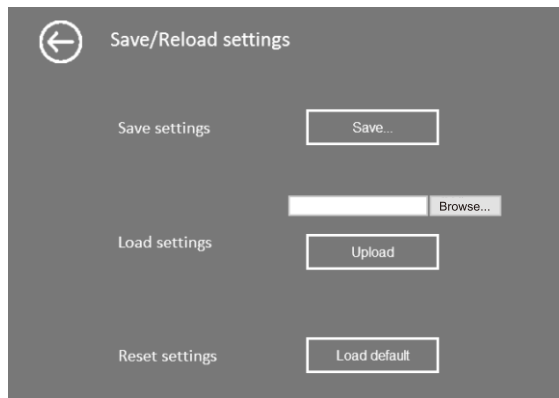
NOTE: Never interrupt the upgrade procedure by closing the web browser or physically disconnect your computer from router. If the firmware you uploaded is corrupt, the firmware upgrade will fail, and you may have to return this router to the dealer of purchase to ask for help. (Warranty voids if you interrupted the upgrade procedure).



Factory Default and Settings Backup . Restore

You can backup all Setting of this router to a file, so you can make several copied of router configuration for security reason.

To backup or restore router setting, please follow the following instructions: Please click '**Save/Reload setting**' located at the web management interface, then the following message will be displayed on your web browser:



Save Settings	Press 'Save...,' button, you can please save it as another filename for different versions, and keep it in a safe place.
Load Settings	Press 'Browse...,' to pick a previously-saved configuration file from your computer, and then click 'Upload...'. After the configuration is uploaded, the router's configuration will be replaced by the file you just uploaded.
Reset Settings	Click this 'Load default' button to remove all settings

How to connect your computer/laptop with the Wi-Fi Repeater

Adding a Wireless computers to the Wi-Fi Repeater

- Log on to the computer.
- Open Connect to a Network by right- clicking the network icon () or () in the notification area.
- Choose the wireless network from the list that appears, and then click Connect.
- Type the network security key or passphrase if you are asked to do so, and then click **OK**. You'll see a confirmation message when you are connected to the network.
- To confirm that you added the computer, do the following: Open Network by clicking the **Start** button (), and then clicking **Control Panel**. In the search box, type **network**, and then, under Network and Sharing Center, click **View network computers and devices**. You should see icons () for the computer you added and for the other computers and devices that are part of the network.



Note: If you don't see icons () in the Network folder, then network discovery and file sharing might be turned off.

Adding a Wireless computers to the Wi-Fi Repeater with WPS Button

- Log on to the computer.
- Press the **WPS** button of the Wi-Fi Repeater directly for 2 – 3 seconds.
- Press the WPS button of the Wireless Adapter directly for 2 - 3 seconds. Click Finish to complete the WPS configuration. (**Please check your Wireless adapter Manual with WPS configuration**)
- You should see icons () for the computer you added and for the other computers and devices that are part of the network.

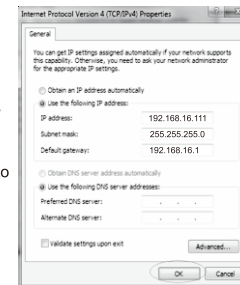
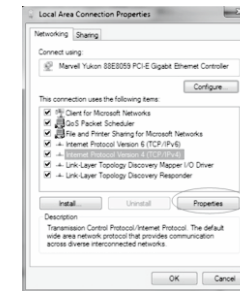
Adding a wired (Ethernet) computer to the Wi-Fi Repeater

- Plug the Wi-Fi Repeater to a wall socket. Connect your computer / laptop with the Wi-Fi Repeater with enclosed RJ45 Cable.
- To confirm that you added the computer, do the following: Open Network by clicking the **Start** button (), and then clicking **Control Panel**. In the search box, type **network**, and then, under Network and Sharing Center, click **View network computers and devices**. You should see icons () for the computer you added and for the other computers and devices that are part of the network.

For more information:
<http://windows.microsoft.com/en-US/windows7/Add-a-device-or-computer-to-a-network>
<http://windows.microsoft.com/en-US/windows7/Setting-up-a-wireless-network>
<http://windows.microsoft.com/en-US/windows-vista/Setting-up-a-wireless-network>

How to configure your computer/laptop with the Network IP Address

- Log on to the computer.
- Click the "**Start**" button (it should be located at the lower-left corner of your screen), then click "**Control Panel**". Click "**View Network Status and Tasks**". Click "**Manage Network Connections**". Right-click "**Local Area Network**", then select "**Properties**". When the "**Local Area Connection Properties**" window appears, select "**Internet Protocol Version 4 (TCP/IPv4)**" and then click "**Properties**".
- Setting IP address manually: Type IP address is **192.168.16.x (x is from 2 to 254)**, and Subnet mask is **255.255.255.0**. Type the Router's LAN IP address (the default IP is **192.168.16.254**) into the Default gateway field.



WEEE Directive & Product Disposal



At the end of its serviceable life, this product should not be treated as household or general waste. It should be handed over to the applicable collection point for the recycling of electrical and electronic equipment, or returned to the supplier for disposal.

FCC Statement

This device complies with part 15 of the FCC Rules. Operation is subject to the following two conditions: (1) This device may not cause harmful interference, and (2) this device must accept any interference received, including interference that may cause undesired operation. Any Changes or modifications not expressly approved by the party responsible for compliance could void the user's authority to operate the equipment.

Note: This equipment has been tested and found to comply with the limits for a Class B digital device, pursuant to part 15 of the FCC Rules. These limits are designed to provide reasonable protection against harmful interference in a residential installation. This equipment generates uses and can radiate radio frequency energy and, if not installed and used in accordance with the instructions, may cause harmful interference to radio communications. However, there is no guarantee that interference will not occur in a particular installation. If this equipment does cause harmful interference to radio or television reception, which can be determined by turning the equipment off and on, the user is encouraged to try to correct the interference by one or more of the following measures:
 -Reorient or relocate the receiving antenna.
 -Increase the separation between the equipment and receiver.
 -Connect the equipment into an outlet on a circuit different from that to which the receiver is connected.
 -Consult the dealer or an experienced radio/TV technician for help.

*RF warning for Mobile device:

This equipment complies with FCC radiation exposure limits set forth for an uncontrolled environment. This equipment should be installed and operated with minimum distance 20cm between the radiator & your body.

SHENZHEN BILIAN ELECTRONIC CO., LTD

LB-LINK is the registered trademark of Shenzhen BILIAN Electronic CO.,Ltd.All the products and product names mentioned herein are the trademarks or registered trademarks of their respective holders © 2012 **LB-LINK** All Rights Reserved.

