

## Quick Installation Guide

### Wireless USB Adapter

This device complies with part 15 of the FCC Rules. Operation is subject to the following two conditions: (1) This device may not cause harmful interference, and (2) this device must accept any interference received, including interference that may cause undesired operation.

Any Changes or modifications not expressly approved by the party responsible for compliance could void the user's authority to operate the equipment.

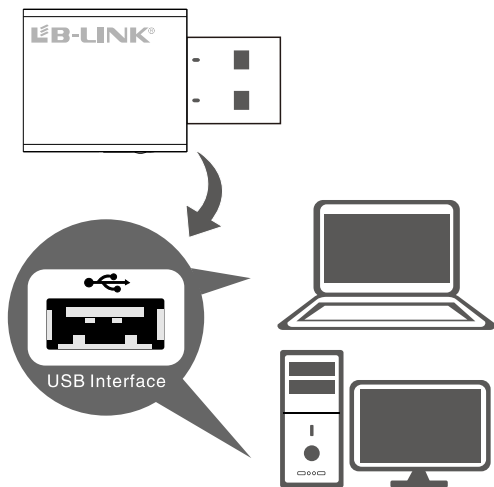
Note: This equipment has been tested and found to comply with the limits for a Class B digital device, pursuant to part 15 of the FCC Rules. These limits are designed to provide reasonable protection against harmful interference in a residential installation. This equipment generates uses and can radiate radio frequency energy and, if not installed and used in accordance with the instructions, may cause harmful interference to radio or television reception, which can be determined by turning the equipment off and on, the user is encouraged to try to correct the interference by one or more of the following measures:

- Reorient or relocate the receiving antenna.
- Increase the separation between the equipment and receiver.
- Connect the equipment into an outlet on a circuit different from that to which the receiver is connected.
- Consult the dealer or an experienced radio/TV technician for help.

\* RF warning for Mobile device:

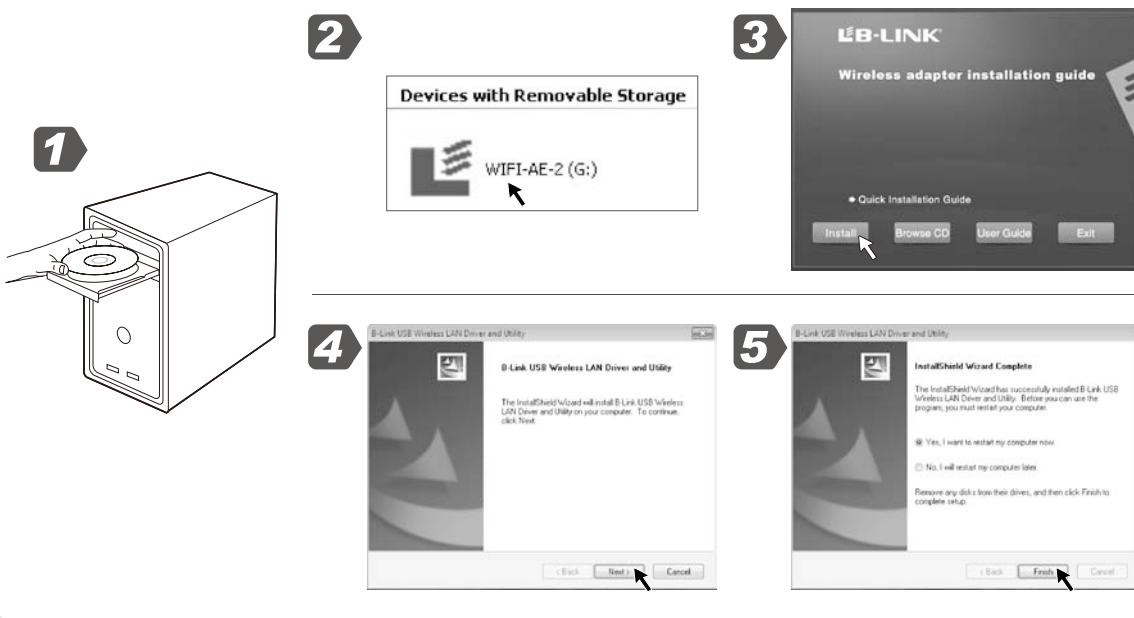
This equipment complies with FCC radiation exposure limits set forth for an uncontrolled environment. This equipment should be installed and operated with minimum distance 20cm between the radiator & your body.

## 1. Hardware Installation



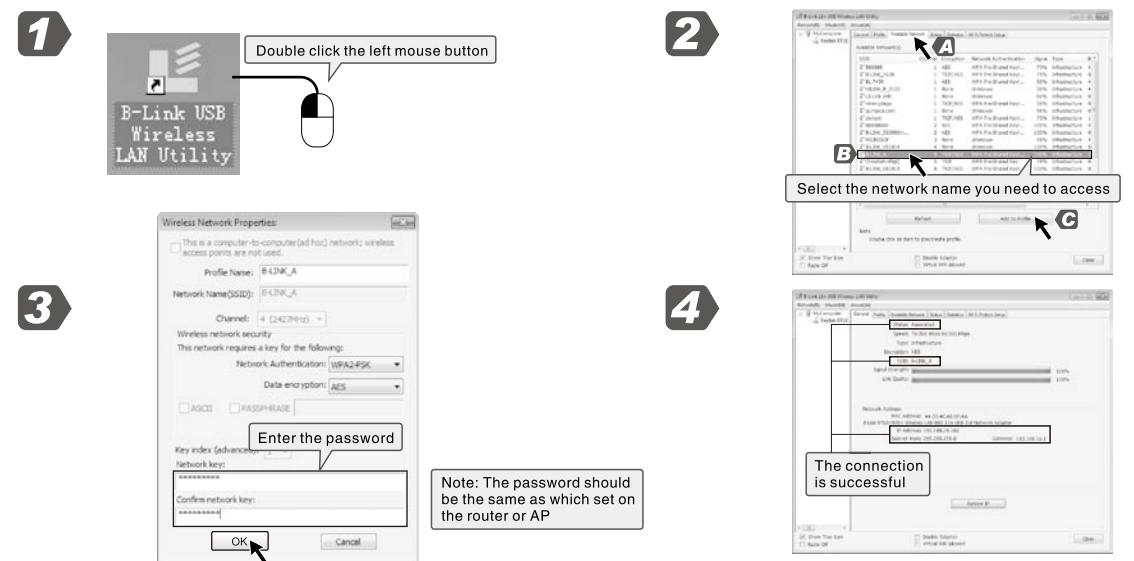
## 2. Software Installation

The software installation process under Windows XP/Vista / 8 is roughly the same, take Windows 7 system as an example.



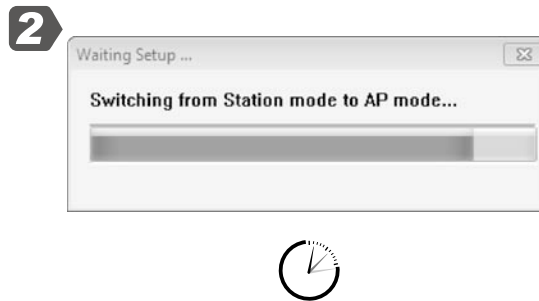
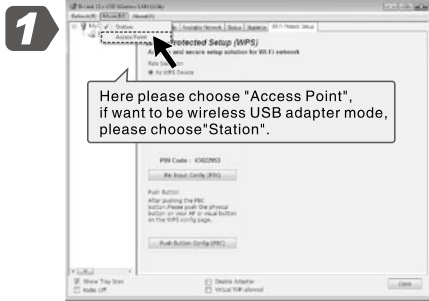
## 1. Hardware Installation

## ◆ Mode 1: Wireless network card access to the wireless network



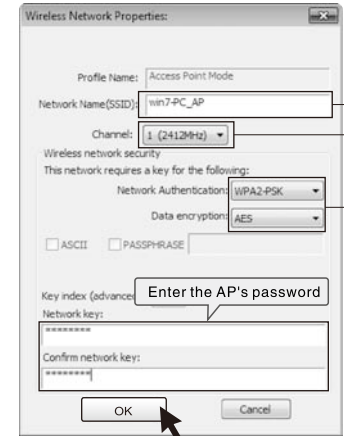
## ◆ Mode 2: Wireless NIC set to AP

- 1 Before switch to AP mode, turn off the computer's firewall and other protective procedures.  
Steps to close the firewall: click Start, select Setting, Control panel, then open Security center and click Windows firewall, select Close, at last click Apply.



Config the AP's security.

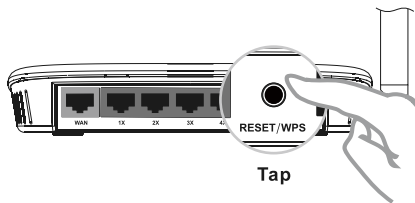
Config the AP's SSID, Channel and Wireless network security.



## ◆ Additional function: WPS(Wi-Fi Security)Set

▶ WPS encryption process must be completed within two minutes

- 1 Some Adapters support this function, so consult the seller when you buy it.



- 2 WPS setting of the wireless network card



- 3 Need to tap WPS button of the wireless router to enable WiFi protection function.



- 4

