

Billion

BiPAC 5200W-T *R2*

**Wireless-N ADSL2+
Firewall Router**

Quick Start Billion 4 PORT Wi-Fi Router

Thank you for purchasing Billion 4 PORT Wi-Fi Router (here in after referred to as the Billion 4 PORT Wi-Fi Router).

With the Billion 4 PORT Wi-Fi Router you can access the Internet at a high speed while making a phone call.



If there is a need to configure the device in your application, please ask for necessary information and guidance from your ISP.

Packing List

Open the package with care and make sure that you have the following items:

- Billion 4 PORT Wi-Fi Router
- Splitter
- dedicated power adapter
- RJ-11 telephone cables
- straight-through Ethernet cable
- Quick Guide

Overview

Billion 4 PORT Wi-Fi Router gives full consideration to the household arrangements, as well as hanging on the wall. Picture below shows how it stands on your table.

The LED Indicators read as follows

Indicator	Color	Status	Description
Power	Red	On	The Billion 4 PORT Wi-Fi Router is powered on.
	Red	Off	The Billion 4 PORT Wi-Fi Router is powered off.
	Green	On	The Billion 4 PORT Wi-Fi Router is ready.
	Green	Blinking	The Billion 4 PORT Wi-Fi Router is getting set
Ethernet	Green	On	The LAN interface is normally connected.
	Green	Blinking	Data is being transmitted.
	Green	Off	The LAN interface is not connected with the network cable.
Wireless	Green	On	The Billion 4 PORT Wi-Fi Router is ready.
	Green	Blinking	Data is being transmitted.
	Green	Off	The wireless LAN is off or has failed.
DSL	Green	On	Successfully connected to an ADSL DSLAM.
	Green	Blinking	connecting to an ADSL DSLAM
Internet	Green	On	PPPoA / PPPoE connection.
	Green	Off	No PPPoA / PPPoE connection.

Preparation

Splitter

Using splitter can reduce disturbance signals in the telephone line. Billion 4 PORT Wi-Fi Router needs to use a separate splitter. The external splitter has three ports.

- LINE : Connecting to the phone jack.
- PHONE : Connecting to the telephone sets.
- MODEM : Connecting to the DSL port of Billion Router 4 port Wifi.

Ethernet NIC

Computer is connected to Billion 4 PORT Wi-Fi Router through the Ethernet port on Router. Ensure your computer is configured with NIC adapter as well as Ethernet port. Besides, make sure you enable the TCP/IP for your operating system.

Connecting Router

Place Billion 4 PORT Wi-Fi Router in a safe and accessible location where you can easily view the LED indicators on the front panel of the device.

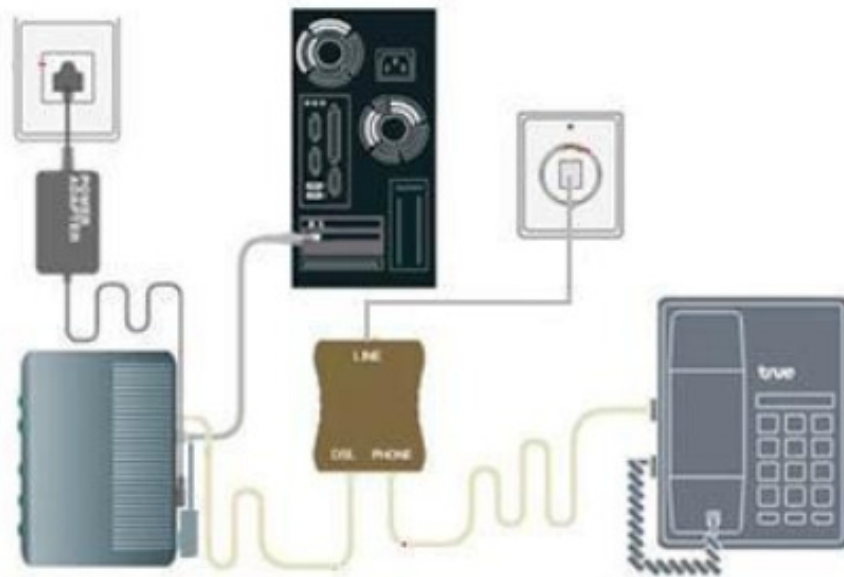


If you want to connect one or more telephones, a splitter is needed. It will work between telephones and the line from phone jack. For more details about connecting multiple telephones, please refer to the FAQs.

To connect Billion 4 PORT Wi-Fi Router, please follow these steps:

- Connect the ADSL line – Plug one end of the twisted – pair phone cable into the LINE port of the splitter and insert the other end into the phone jack. Use another phone cable to connect the Router port of the splitter and the ADSL port on the rear panel of Billion 4 PORT Wi-Fi Router.
- Connect the power adapter – Connect the power adapter to Billion 4 PORT Wi-Fi Router and the main supply. Power on the switch. The Power LED indicator will turn on.
- Connect Billion 4 PORT Wi-Fi Router to your computer – Use the Ethernet cable to connect Billion 4 PORT Wi-Fi Router and your computer or Notebook through 10/100Base-TX Ethernet ports.

When the LAN LED of Billion 4 PORT Wi-Fi Router is ON, it indicates the connection between Billion 4 PORT Wi-Fi Router and your PC.



Computer to Router connection



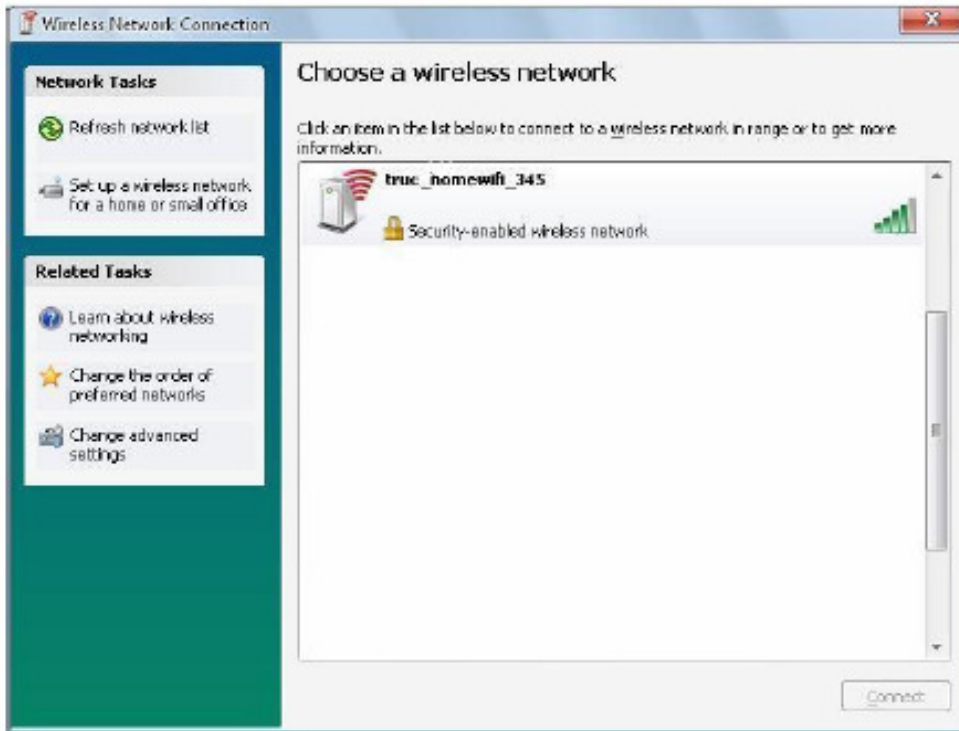
Ensure that the cable connecting the LAN to Billion 4 PORT Wi-Fi Router must not exceed 100 meters.

Wireless LAN

Computer is connected to Billion 4 PORT Wi-Fi Router through the Wireless LAN. Please check your computer is configured with Wireless LAN Card.

Setting up Wireless LAN

1. Click Start→Setting→Network Connections. Choose Wireless LAN Adapter
2. You can see "Wireless Network Connection" windows. Choose "homewifi_345" then Press Connect.



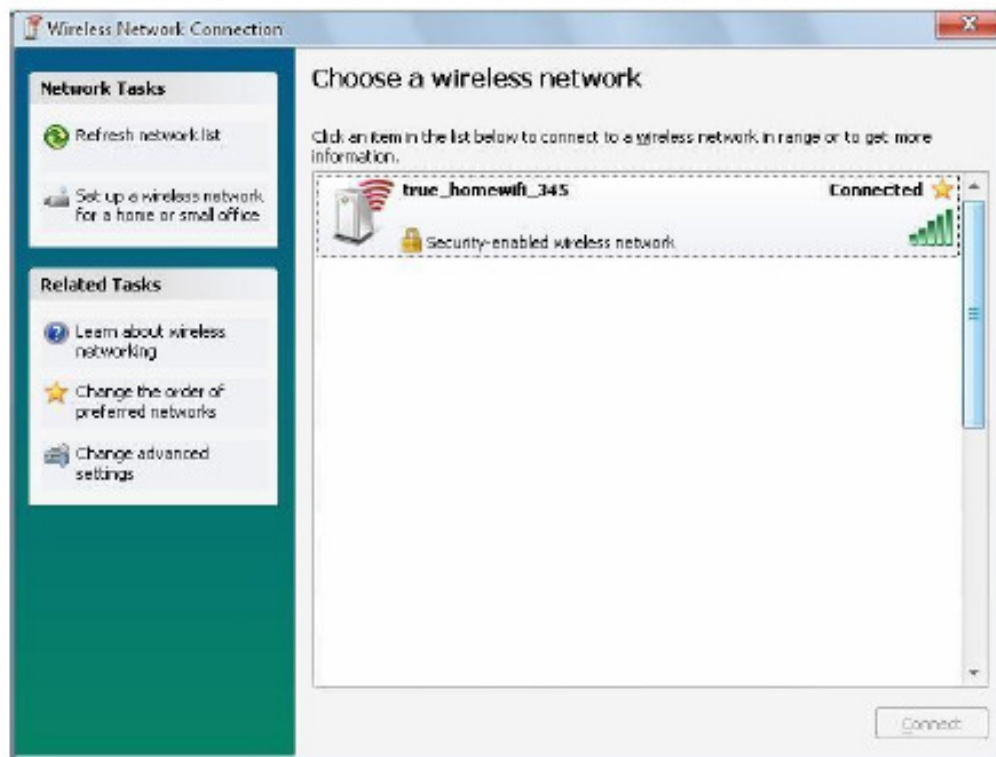
3. You can see "Wireless Network Connection". Enter Key then Press Connect.



Note: Default SSID and Key can get from under your Billion 4 PORT Wi-Fi Router. From the example below, SSID and Key is a unique value associated with Billion 4 PORT Wi-Fi Router.

SSID: homewifi_345
Key: 0000081Z

4. If computer can connect to Wireless LAN. You can see "Connected" on screen.



Configuration for internet via Web Configurator.

1. Launch your web browser. Enter "192.168.1.1" as the web site address



2. A Login page will display. Enter Username ("admin" is default) and Password ("password" is the default) and click "OK".



Note: Username and Password can get under your Billion Wireless-N ADSL2+ Firewall Router
After click "OK" it will be shown as below

User name: admin
Password: password

Status	Quick Start	Interface Setup	Advanced Setup	Access Management	Maintenance	Status	Help
	Device Info	System Log	Statistics				
Device Information	Firmware Version : TC vFw \$T.3.8.0 v00 MAC Address : 00:04:ED:44:3C:C4						
LAN							
IPv4	IP Address : 192.168.1.1 Subnet Mask : 255.255.255.0 DHCP Server : Enable						
IPv6	IP Address : Prefix Length : DHCP Server : Enable						
WAN							
IPv4	Virtual Circuit : PVC <input type="text" value="0"/> Connection Type : PPPoE PPP connection time : 0 : 0 : 5						
IPv6	Status : Connected IP Address : 58.8.168.130 Subnet Mask : 255.255.255.255 Default Gateway : 58.8.168.1 DNS Server : 203.144.207.29						
	Status : Not Connected IP Address : N/A Prefix Length : N/A Default Gateway : N/A DNS Server : N/A Prefix Delegation : N/A						
ADSL							
	ADSL Firmware Ver : FwVer:3.18.2.0_A_TC3088 HwVer:T14.F7_7.0 Line State : up Modulation : TU G.992.5(ADSL2PLUS) Annex Mode : ANNEX A/JULN						
			Downstream	Upstream			
			SNR Margin : 31.2 db	24.8 db			
			Line Attenuation : 20.0 db	9.9 db			
			Data Rate : 5605 kbps	812 kbps			

3. You will see web configurator. Choose **Interface Setup**

BILLION ADSL Modem/Router

Quick Start | **Interface Setup** | Advanced Setup | Access Management | Maintenance | Status | Help

Internet | **LAN** | Wireless | Advanced Wireless

ATM VC

Virtual Circuit: pvc 0

Status: Activated Deactivated

VPI: 0 (range: 0-255)

VCI: 100 (range: 1-65535)

QoS

ATM CoS: ubr

PCR: 0 cells/second

SCR: 0 cells/second

MBS: 0 cells

IPv4IPv6

IP Version: Pv4 Pv4/Pv6 IPv6

Encapsulation

PP: Dynamic IP Address
 Static IP Address
 PPPoA/PPPoE
 Bridge Mode

4. Enter your User Name is mac address@isp and Password is password then Click **SAVE**

PPPoE/PPPoA

Username: 00aa0012345@truehis

Password: *****

Encapsulation: PPPoE LLC

Bridge Interface: Activated Deactivated

Connection Setting

Connection: Always On (Recommended)
 Connect Manually

TCP MSS Option: TCP MSS (0 means use default) 0 bytes

IP Options

IP Common Options

Default Route: Yes No

Get IP Address: Static Dynamic

Static IP Address: 0.0.0.0

IP Subnet Mask: 0.0.0.0

Gateway: 0.0.0.0

NAT: Enable

Dynamic Route: RPT Direction None

TCP MTU Option: TCP MTU (0 means use default:1460) 0 bytes

IGMP Proxy: Enable Disable

IPv6 Options

DHCP IPv6 Mode: SLAAC DHCP

DHCP PD Enable: Enable Disable

MLD Proxy: Enable Disable

Federal Communication Commission Interference Statement

This equipment has been tested and found to comply with the limits for a Class B digital device, pursuant to Part 15 of the FCC Rules. These limits are designed to provide reasonable protection against harmful interference in a residential installation. This equipment generates, uses, and can radiate radio frequency energy and, if not installed and used in accordance with the instructions, may cause harmful interference to radio communications. However, there is no guarantee that interference will not occur in a particular installation. If this equipment does cause harmful interference to radio or television reception, which can be determined by turning the equipment off and on, the user is encouraged to try to correct the interference by one or more of the following measures:

- Reorient or relocate the receiving antenna.
- Increase the separation between the equipment and receiver.
- Connect the equipment into an outlet on a circuit different from that to which the receiver is connected.
- Consult the dealer or an experienced radio/TV technician for help.

FCC Caution

This device complies with Part 15 of the FCC Rules. Operation is subject to the following two conditions:

- (1) This device may not cause harmful interference
- (2) This device must accept any interference received, including interference that may cause undesired operation.

Any changes or modifications not expressly approved by the party responsible for compliance could void the user's authority to operate this equipment. . This device and its antenna(s) must not be co-located or operating in conjunction with any other antenna or transmitter.

Co-location statement

This device and its antenna(s) must not be co-located or operating in conjunction with any other antenna or transmitter.

FCC Radiation Exposure Statement

This equipment complies with FCC radiation exposure limits set forth for an uncontrolled environment. This equipment should be installed and operated with minimum distance 20cm between the radiator & your body.