

Bluetooth Access Point with Broadband Router

User's Guide

FCC Interference Statement

FEDERAL COMMUNICATIONS COMMISSION

This device complies with Part 15 of the FCC Rules. Operation is subject to the following two conditions:(1) this device may not cause harmful interference, and (2) this device must accept any interference received, including interference that may cause undesired operation.

NOTE

This equipment has been tested and found to comply with the limits for a Class B digital device, pursuant to Part 15 of the FCC Rules. These limits are designed to provide reasonable protection. This equipment generates, uses and can radiated radio frequency energy and, if not installed and used in accordance with the instructions, may cause harmful interference to radio communications. However, there is no guarantee that interference will not occur in a particular installation. If this equipment does cause harmful interference to radio or television reception, which can be determined by turning the equipment off and on, the user is encouraged to try to correct the interference by one or more of the following measures:

- Reorient or relocate the receiving antenna.
- Increase the separation between the equipment and receiver.
- Connect the equipment into an outlet on a circuit different from that to which the receiver is connected.
- Consult the dealer or an experienced radio/TV technician for help.

Changes or modifications not expressly approved by the party responsible for compliance could void the user's authority to operate the equipment.

FCC Radiation Exposure Statement

This equipment complies with FCC radiation exposure limits set forth for an uncontrolled environment. In order to avoid the possibility of exceeding the FCC radio frequency exposure limits, human proximity to the antenna shall not be less than 20cm (8 inches) during normal operation.

CE Declaration of Conformity

This equipment complies with the requirements relating to electromagnetic compatibility, EN 55022/A1 Class B, and EN 50082-1. This meets the essential protection requirements of the European Council Directive 89/336/EEC on the approximation of the laws of the member states relation to electromagnetic compatibility.

[Chapter 1 Introduction](#)

[Chapter 2 Function and Features](#)

[Chapter 3 Specifications](#)

[Chapter 4 Package Contents](#)

[Chapter 5 Install the Router](#)

[Chapter 6 Configuring the PC](#)

[Chapter 7Configuring Router](#)

[Chapter 8 Troubleshooting](#)

Chapter 1 Introduction

Congratulations on your purchase of the Bluetooth access point with broadband router. This Bluetooth access point with broadband router provides the ideal solution for connecting your wireless network to a high-speed broadband Internet connection or a 10/100 Fast Ethernet backbone. Configurable as a DHCP server for your existing network, the access point with broadband router acts as the only externally recognized Internet gateway on your local area network (LAN) and serves as an Internet NAT firewall to unwanted outside intruders.

This cutting-edge Bluetooth access point with broadband router eliminates the need to buy an additional hub or switch and extends the range of your wireless network. Now your entire wireless network can enjoy blazing broadband internet connections supported by a robust switched backbone. With the dual-function speed and power of the Bluetooth access point with broadband router, your network will take off at speeds faster than you ever imagined.

Devices of all types, from phones and handhelds to printers and even home electronics, such as TVs and stereos, are perfectly suited for PANs. They are spontaneous, or “ad hoc”. Unlike the other types of wireless networks, PANs

need NO infrastructure to giving an entirely new meaning to the term “universal remote”. PANs offer a myriad of possibilities for connecting to the internet, communicating with other Bluetooth devices, and collaborating peer-to-peer networking. Additionally it is easy to configure and operate for even non-technical users. Instructions for installing and configuring this product can be found in this manual. Before you install and use this product please read this manual carefully to fully utilize all the available features.

Chapter 2 Functions And Features

- Broadband modem supported
connects multiple computers to a broadband (cable or xDSL) modem or an Ethernet router to surf the Internet.
- DHCP server supported
all of the networked computers can retrieve TCP/IP settings automatically from this product.
- Piconet enabled. Up to 7 Bluetooth devices can simultaneously connect to the built in access point and connect to other LAN devices through a 10/100 Base-Ethernet at speed of up 723 kbps.
Web-based configuration provides a Friendly web-based management and interface. A built-in web server and java applet support easier configuration, allows remote management, and shows a status report.
- Access Control supported
allows you to assign different access right for different users.
- Virtual Server supported
enables you to expose WWW, FTP and other services on your LAN in order to be accessible to Internet users.
- User-Definable Application Sensing Tunnel
user can define the attributes needed to support the special applications requiring multiple connections, like Internet gaming, video conferencing, Internet telephony and so on. After these settings have been configured this product will sense the application type and open a multi-port tunnel for it.
- Extended wireless range. Low power and more sensitivity cover a distance up to 100 meters (power class 1)
- Compliant with Bluetooth Specification v1.1.
- Compliant with PAN/BNEP Specification version 1.0.
- Supports Bluetooth link level security.
- Supports Bluetooth authentication and access rights management.
- DHCP or Static IP-address support.
- User authentication using CHAP or PAP.

Chapter 3 Specification

Bluetooth

Wireless Interface	Compliant with Bluetooth Spec. Version 1.1
Bluetooth Protocol Stack Supported	L2CAP, BNEP, RFCOMM, SDP
Bluetooth Profiles Supported	GAP, PAN
Security Mode	Bluetooth security mode 1, 2, 3 and PAN service-level security
Frequency	2.4 GHz license-free ISM band
Range(open environment)	Up to 100 meters range (300ft)
Radio Receiver Sensitivity	< -84 dBm at 1e-3 BER
Maximum Clients per PicoNet	Up to 7 simultaneous active PAN users
Antenna attached	2.4 GHz external antenna x 1

Interface/Connectors

LED Indicators (3)	Power, Link/ACT(LAN 10Mbps), Speed (100Mbps), Air (Bluetooth Activity)
Push Button (1)	Default factory settings
WAN Port (1)	RJ-45 connector with UTP/STP Category 5
External antenna (1)	Dipole antenna

Networking

LAN Interface	10/100 Mbps Ethernet,RJ-45 socket
LAN Protocol	Compliant with IEEE802.3 and IEEE802.3u
Automatic Configuration	NAT, DHCP Server, DHCP Client, PPPOE
Remote Configuration	Built-in Web Server
Supported Tools	Remote gateway IP discovery

Electronic

Power Requirements	90V-240VAC, 50/60Hz, DC Adaptor, to 5 VDC at1000mA Typical: 170 mA/5V Maximum: 260 mA/5V Idle: 140 mA/5V
Power Consumption	
Certifications	FCC Class B, Part 15.247, Part 15.109, BQB,CE
Operating Temperature	0 ° C to 55 ° C
Humidity (non-condensing)	5% to 95% RH

Dimensions

Size	94 mm x 62 x 21 mm (WxDXH)
Weight	180 g

Chapter 4 Package contents

- One Bluetooth PAN Router unit
- One installation CD-ROM
- One quick start guide
- One power cord and power adapter
- One CAT-5 UTP Fast Ethernet cable (Straight Through Cable)

Chapter 5 Install the router

5.1. Panel Layout

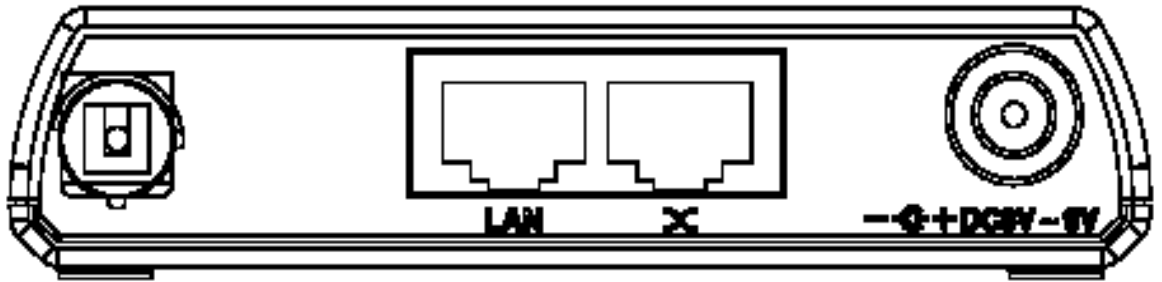


5.1.1. Rear Panel

Rear Panel

The LAN port is the segment connected to your xDSL or Cable modem and is linked to the Internet.

The LAN port section consists of 2 ports, **X** and **LAN (only one port can be used at one time)**.



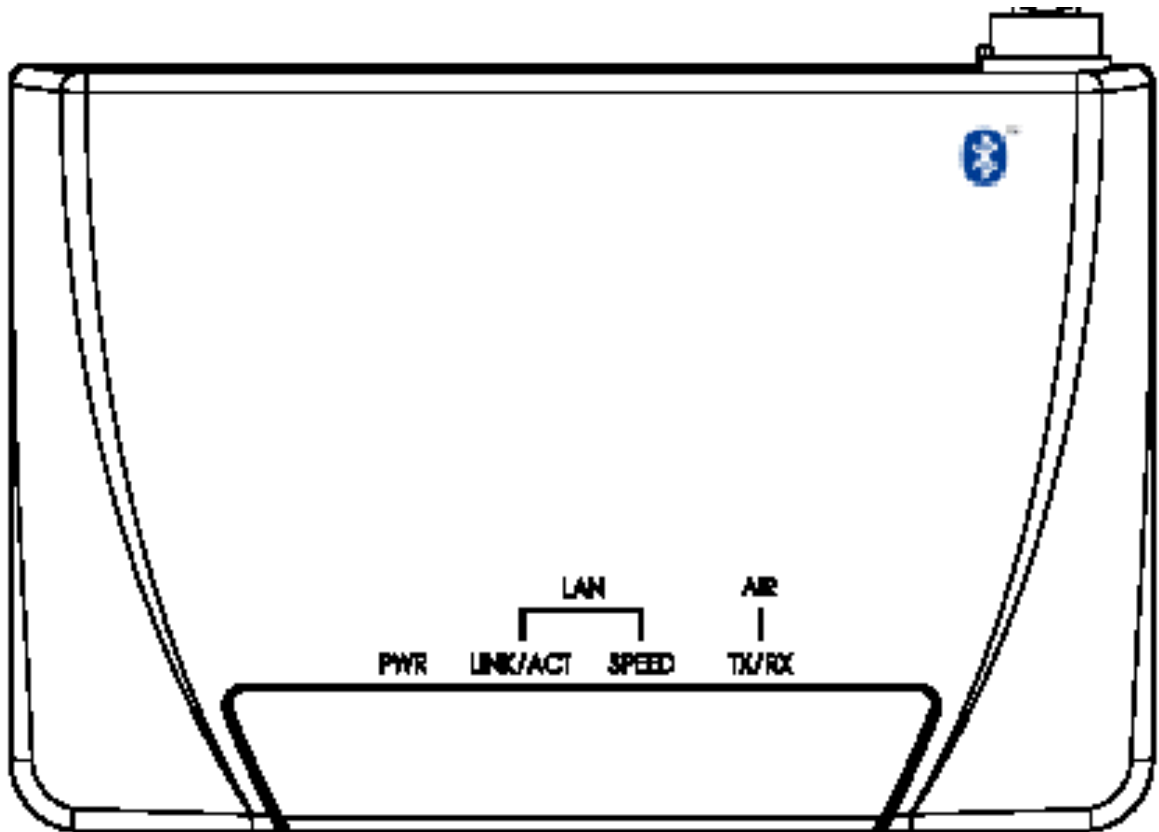
Depending on your Modem's port type (regular or uplink), the table shows you what WAN port to use with which cable.

Port	Straight Through Cable	Crossover Cable
X	Modem port is a regular port	Modem port is an Uplink port
LAN	Modem port is an Uplink port	Modem port is a regular port

Power inlet. This is where you connect the included power adapter. Please note that the included power adapter is DC 6V/1A.

Using wrong type of power adapter may damage to this product.

5.1.2. Front Panel



5.1.3. LED indicators

PWR LED indicators: Green. This LED indicates that the Router's power is on.

LAN indicators: Green This LED indicates that the Router's WAN Interface has been enabled.

AIR LED indicator: Green. This LED indicates Bluetooth wireless activity.

5.2. Installation Requirements

Hardware requirements

This product can be positioned at any convenient place in your office or house. No special wiring or cooling requirements are needed. However, you should comply with the following guidelines for optimal installation:

- Place this product on a flat horizontal plane.
- Keep this product away from any heating devices.
- Do not place this product in a dusty or wet environment.
- The recommended operational specifications of this product are:
Voltage/Current AC 100V ~ 230V
Temperature: 5°C ~ 55°C
Humidity: 10 % ~ 90 %

In addition, remember to turn off the power, remove the power cord from the outlet, and keep your hands dry when you install this product.

Software requirements

- One Windows 98 SE, Millennium, 2000, or XP PC equipped with TCP/IP Protocol, Internet Explorer 4.0 or Netscape Navigator 4.7 with Java VM included for web-based configuration, a CD-ROM Drive and an Ethernet Adapter with a UTP CAT 5 Network Cable
- Cable or DSL Modem with Ethernet Connection and Internet Access
- For Windows XP users, it is necessary to download JRE from Sun Microsystems (<http://www.sun.com>) or run windows update.
- Bluetooth application software must be compliant with PAN/BNEP Specification version 1.0.

Chapter 6 Configuring The PC

6.1. Overview

These instructions will help you configure each of your computers to communicate with the Bluetooth PAN Router. To do this, you will need to configure your PC's network settings to obtain an IP (or TCP/IP) address automatically. Computers use IP addresses to communicate with each other across a network or the Internet. You will need to know which operating system your computer is running, such as Windows 98, 2000, or XP. You can find out by clicking the **Start** button and then selecting the **Settings** option (If your **Start** menu does not have a **Settings** option, you're running Windows XP. You can select the **Control Panel** directly from the **Start** Menu). Then, click **Control Panel** and double-click the **System** icon. Click the **Cancel** button when done. Once you know which Windows operating system you are running, follow the directions below for your computer's operating system. If your PC is not configured with the TCP/IP protocol, you will need to do this for each computer you are connecting to the Router.

The only Bluetooth PAN profile in PC side provided is from IVT Inc. and Widcomm, so you need to follow the instructions of **IVT BlueSoleil** or **BTW** and **BTWCE** product to setup the *BT Network Adapter* for later configuration.

The next few pages will tell you, step by step, how to configure your TCP/IP settings based on the type of Windows operating system you are using. Once you've configured your computers, continue to "Chapter 6: Configuring The Router."

6.2. Configuring Windows 95, 98, and Millennium PCs

1. Click the **Start** button, click **Settings** and open the **Control Panel**. From there, find the **BT Network Adapter** connection and double-click the icon to open the Network screen.
2. Select the **Configuration** tab and highlight the **TCP/IP line** for the applicable Ethernet adapter. If the word **TCP/IP** appears by itself, select that line. (Note: If there is no TCP/IP line listed, refer to your Ethernet adapter's documentation to install TCP/IP.) Then click the **Properties** button.
3. Click the **IP Address** tab and select **Obtain an IP address automatically**.
4. Click the tab and verify that the Installed Gateway field is blank. Click the **OK** button.
5. Click the **OK** button again. Windows may ask you for the original Windows installation disk or additional files. Supply them by pointing to the correct file location, e.g., D:\Win98 (This assumes that "D" is the letter of your CD-ROM drive).
6. If Windows asks you to restart your PC, click the **Yes** button. If Windows does not ask you to restart, restart your computer anyway.

Repeat steps 1 - 5 for each PC on your network.

6.3. Configuring Windows 2000 PCs

1. Click the **Start** button, click **Settings** and open the **Control Panel**. From there, double-click the **Network and Dial-up Connections** icon. This will display the Network screen.
2. Select the **Local Area Connection** icon for the applicable Bluetooth Network adapter (usually it is the second Local Area Connection listed instead of the default adapter after you installed the BT driver). Double-click **Local Area Connection** and click the **Properties** button.
3. When the **Local Area Connection Status** screen appears, click the **Properties** button.
4. Select **Internet Protocol (TCP/IP)** and click the **Properties** button.
5. Select **Obtain an IP address automatically** and verify that **Obtain DNS server address automatically** is selected. Then, click the **OK** button and click the **OK** button on the subsequent screens to complete the PC's configuration.

Repeat steps 1-5 for each PC on your network.

6.4. Configuring Windows XP PCs

The following instructions assume you are running Windows XP's default interface. If you are using the Classic interface (where the icons and menus

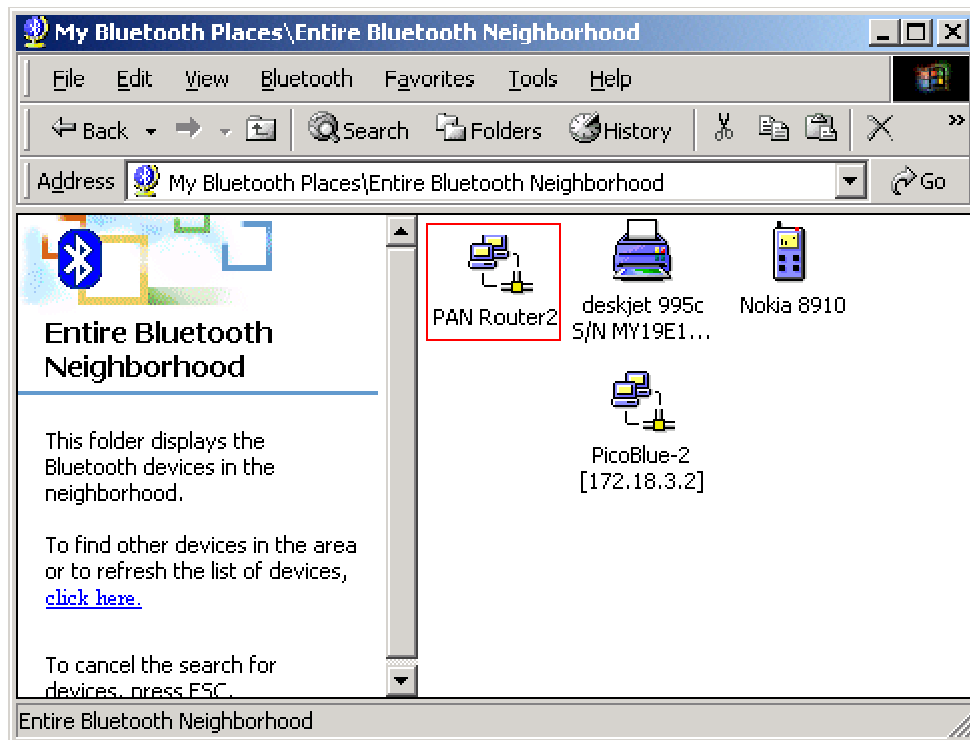
look like previous Windows versions), please follow the instructions for Windows 2000.

1. Click the **Start** button, open the **Control Panel**. Click the **Network and Internet Connections** icon. Then click the **Network Connections** icon to display the Network screen.
2. Select the **Local Area Connection** icon for the applicable Bluetooth Network adapter (usually it is the second Local Area Connection listed instead of the default adapter after you installed the BT driver). Double-click **Local Area Connection** and click the **Properties** button.
3. When the **Local Area Connection Status** screen appears, click the **Properties** button.
4. Select **Internet Protocol (TCP/IP)** and click the **Properties** button.
5. Select **Obtain an IP address automatically** and verify that **Obtain DNS server address automatically** is selected. Then, click the **OK** button and click the **OK** button on the subsequent screens to complete the PC's configuration.

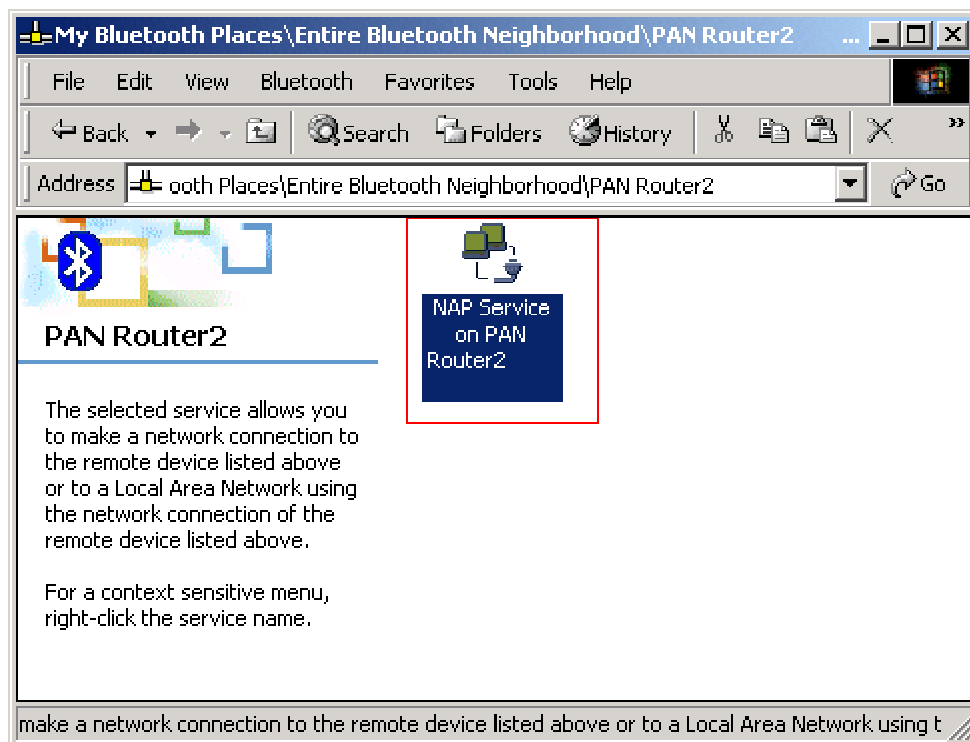
Repeat steps 1 - 5 for each PC on your network.

6.5. Configure Widcomm BTW

The Bluetooth Software makes it easy to join an existing personal network, hosted by another Bluetooth device (PocketPC, desktop, etc.). From the **My Bluetooth Places**, choose **Entire Bluetooth Neighborhood**, and select the Bluetooth device that you want to establish a PAN connection and double click the device icon.



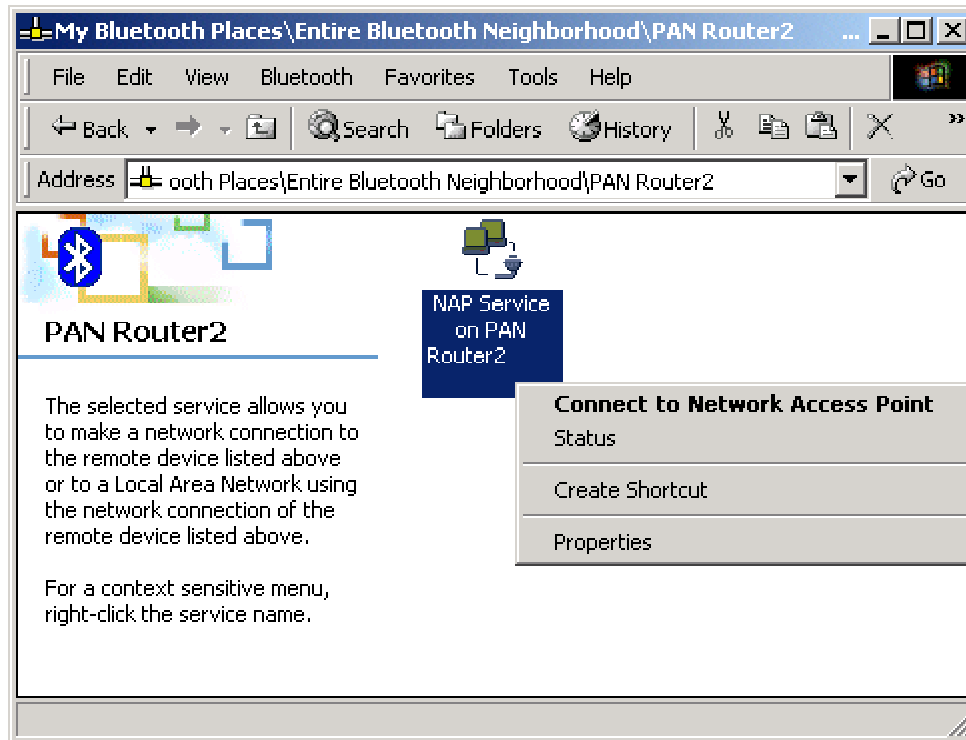
It will list out all the available services of this device. Select the NAP Service.



Right click the NAP Service and select **"Connect to Network Access Point"** and your PC will get an IP address from the Network Access Point.

At this moment, you might be prompted to enter the IP network settings. If this is the case, choose **"Obtain an IP address automatically"** from your Bluetooth Network TCP/IP setting.

After the host is selected, a connection will then be established between your PC and the host over the personal network.



6.6. Configure Widcomm BTWCE

Hosting a Personal Area Network

To host a personal network, go to the Bluetooth Manager, choose **New > Connect > Join a personal network > Next**. The following screen will be shown:



Choose **Host a personal network** and tap **Next**. Then the following screen be shown, which allows you to "bring in" one or more guests, if desired. This step is optional, since guests can join later on as long as the personal network is active (more details in the following section).



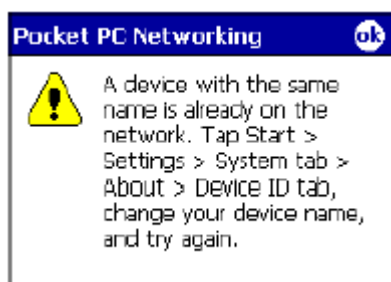
Adding devices to a personal network.

Joining a Personal Area Network

BTW-CE makes it easy to join an existing personal network, hosted by another Bluetooth device (PocketPC, desktop, etc.). From the Bluetooth Manager, choose **New -> Connect -> Join a personal network -> Next**, but choose **Join a personal network** this time. The Bluetooth Browser will be shown for you to select the device that is hosting the personal network. After selecting the host, choose **Next**. A connection will then be established between your PocketPC and the host over the personal network.

At this moment, you might be prompted to enter IP network settings. If this is the case, choose "**Use server-assigned IP address**" and tap **OK**.

The following warning may also be shown. As instructed, change the name of your device and tap **OK**.

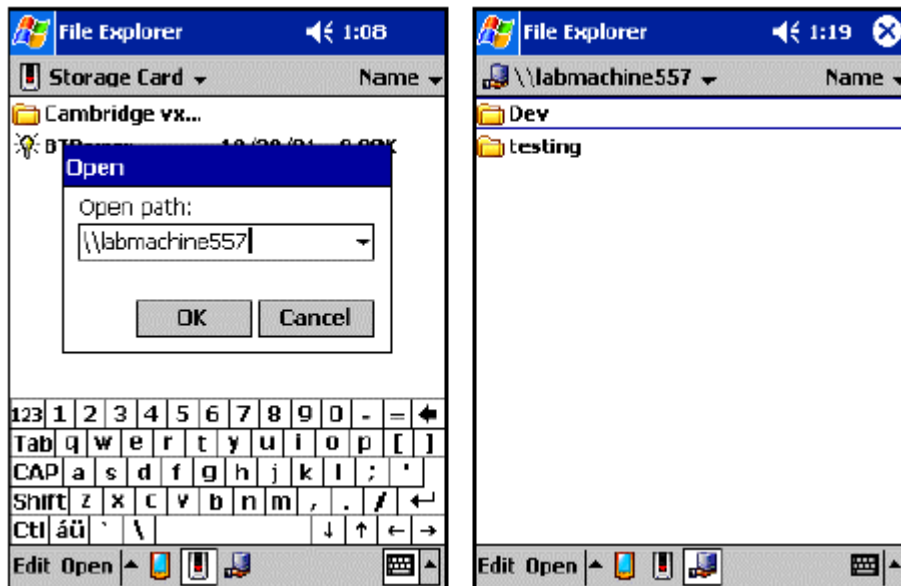


Since the network is established via Bluetooth, the network host's service availability, authorization and/or authentication security settings are in effect and may prevent you from joining the network.



PAN network settings.

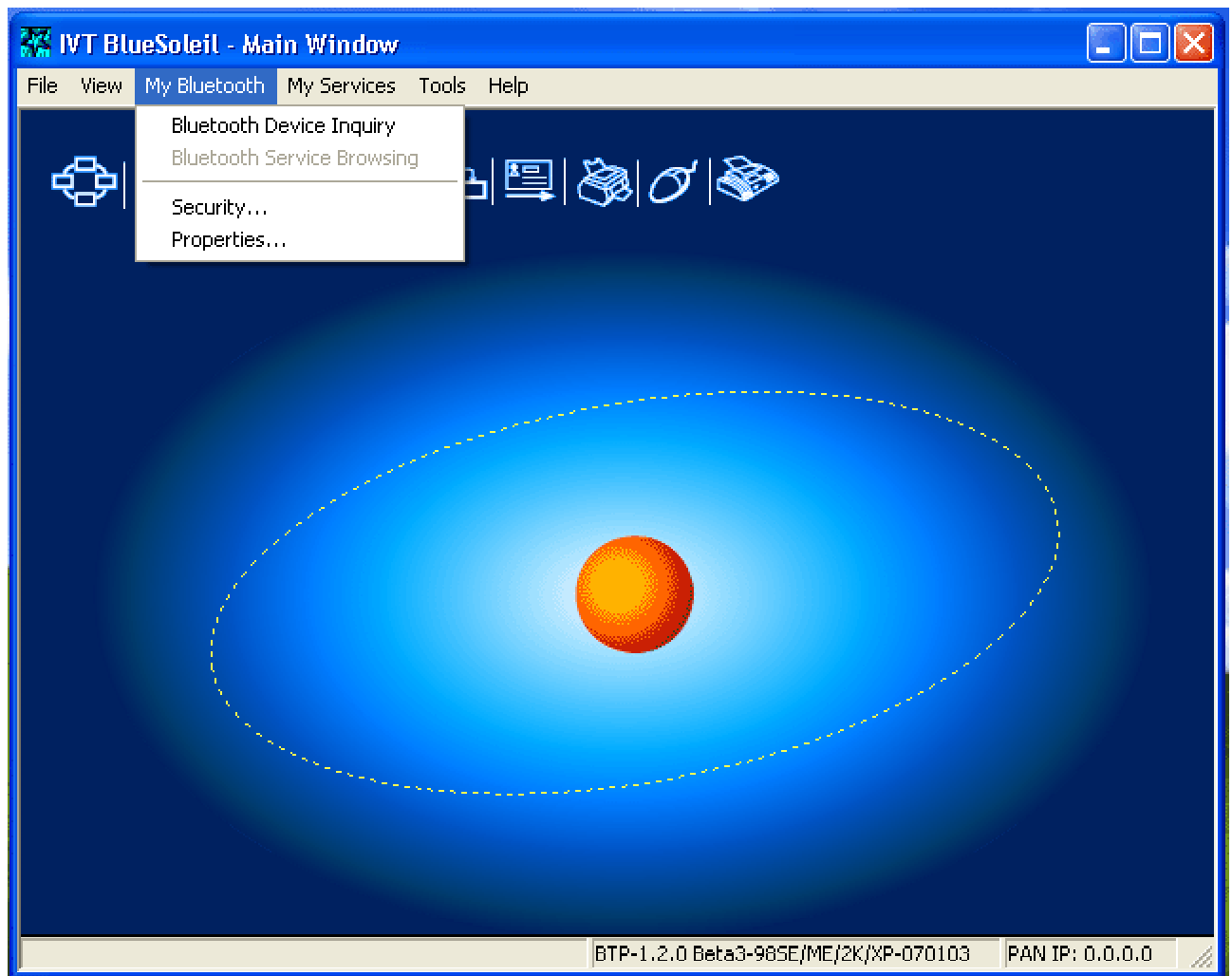
After joining the personal network, you can use any application that requires an underlying network connection. For instance, you can view a remote folder via the File Explorer by choosing **Open** and entering a remote, accessible device path.

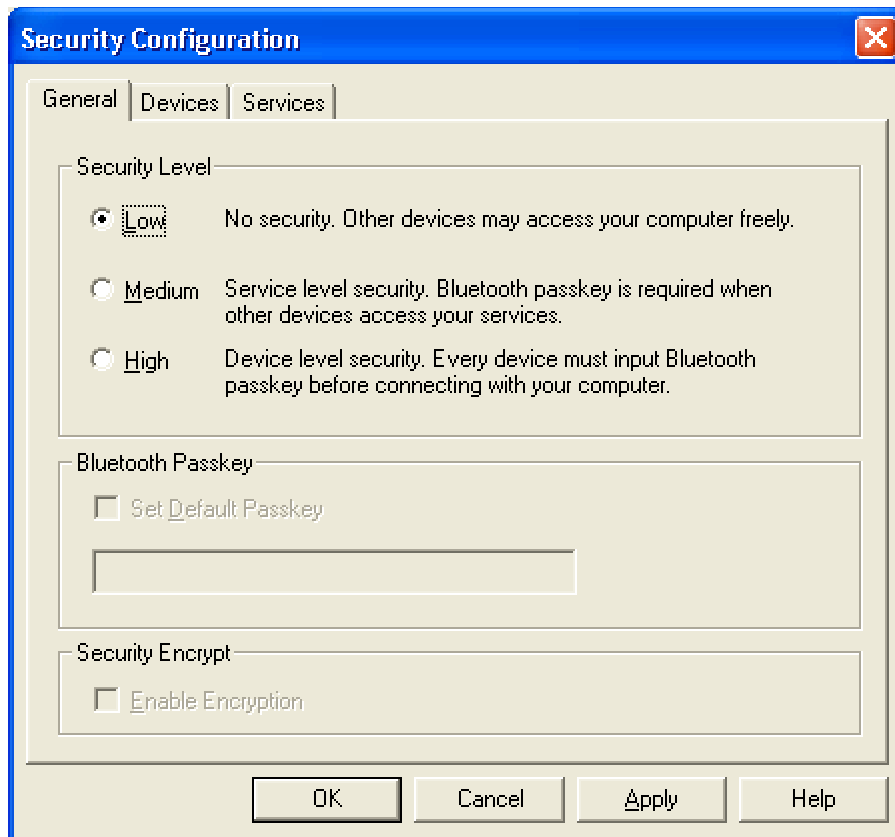


Browsing files on a remote device (via the PocketPC File Explorer) after joining a personal network.

6.7. Configure IVT BlueSoleil

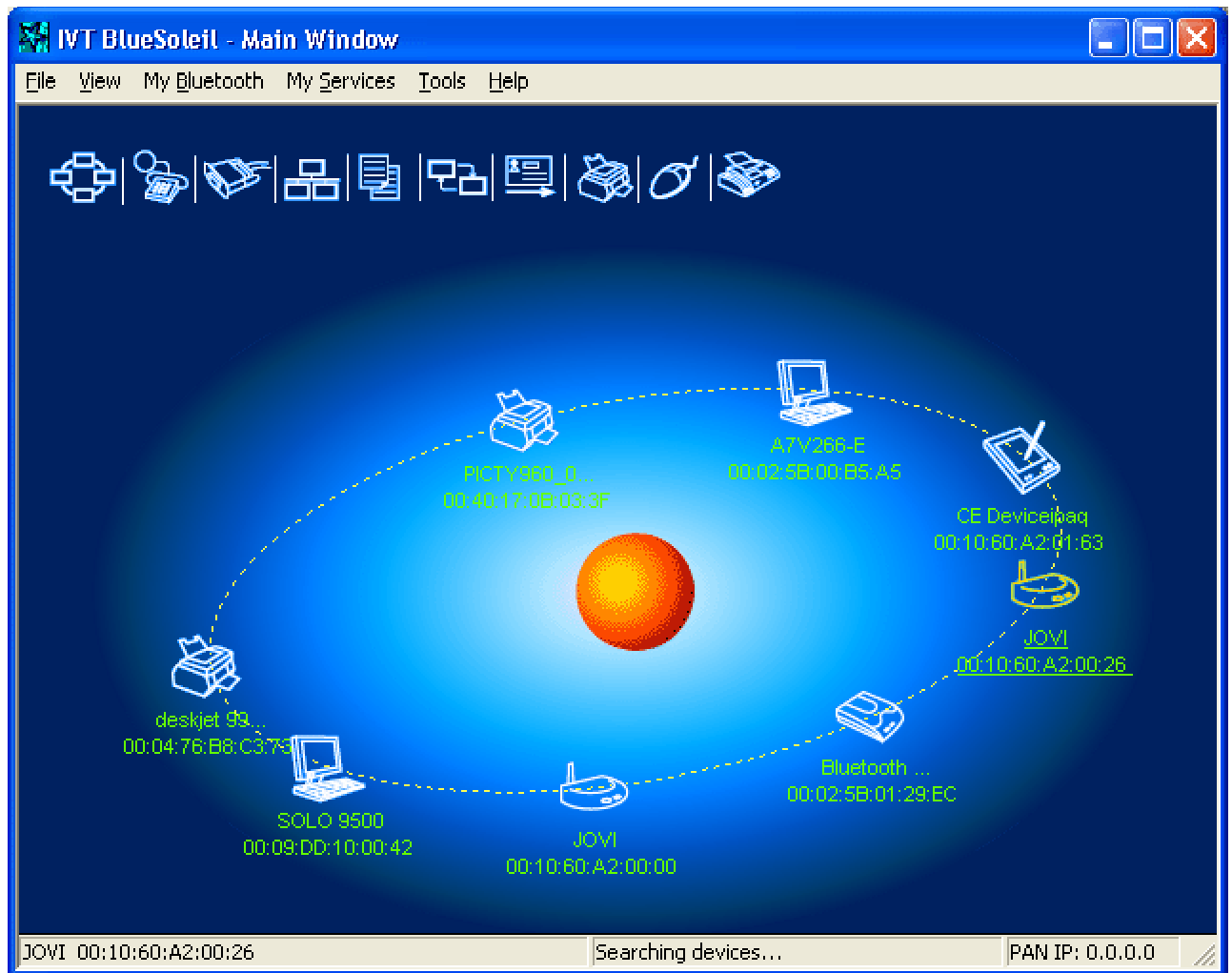
By now, the PCs (PAN Clients) can access LAN as if they are attached to LAN directly. Before you actually connect to the Bluetooth access point with broadband router, you have to change the security setting on IVT BlueSoleil product. Click on **My Bluetooth** -> **Security**, and panel will pop up. Select the **Low Security Level** option to cooperate the default no-security setting on Bluetooth PAN Router as shown in figure as blow.



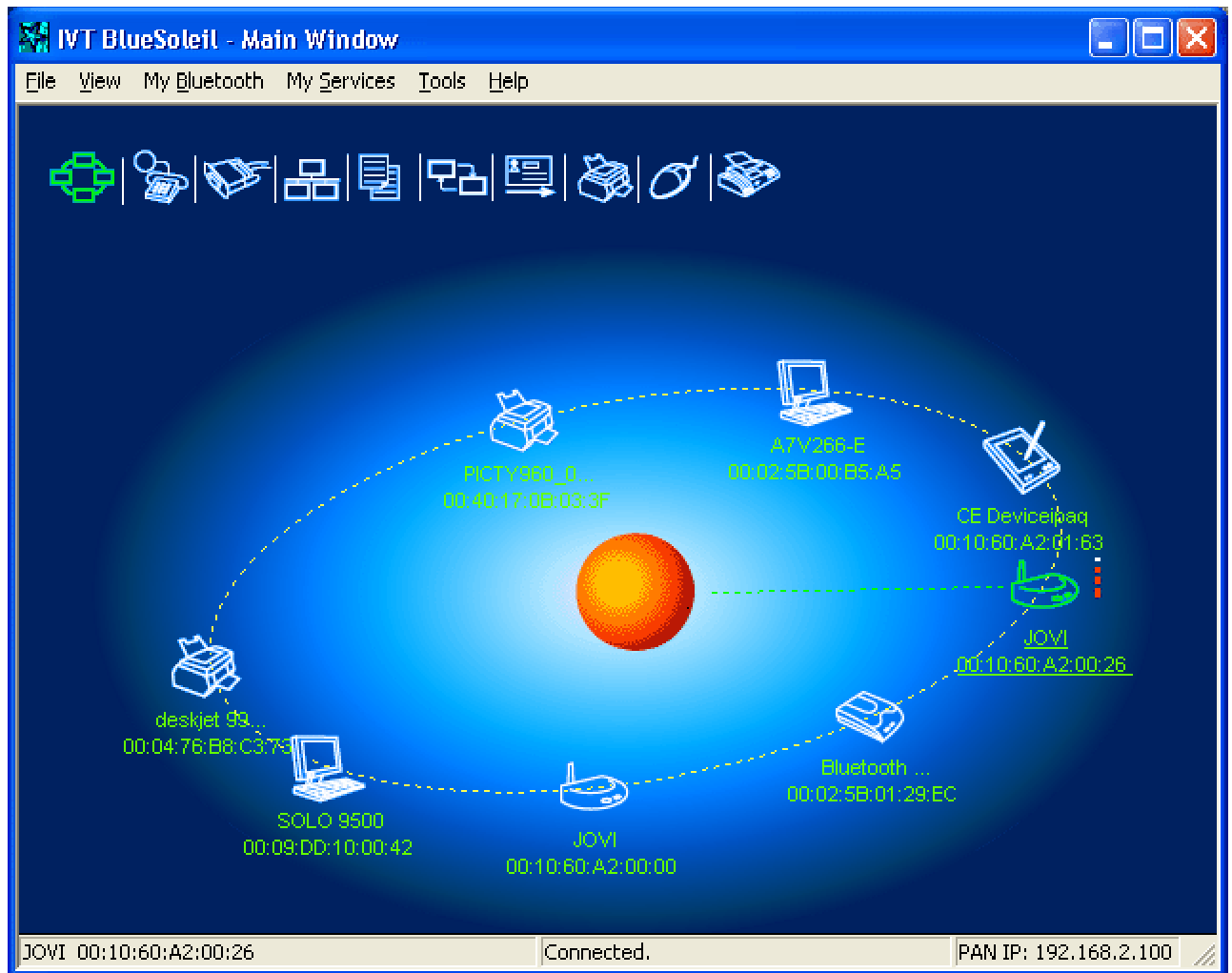


Now you can get access to PAN service in two steps:

1. In the BlueSoleil's Main Windows, click the *center ball*, and wait for a few seconds. After all device icons appear as shown in figure, click on the Bluetooth device name which indicates your Bluetooth access point with broadband router and point to PAN service icon.

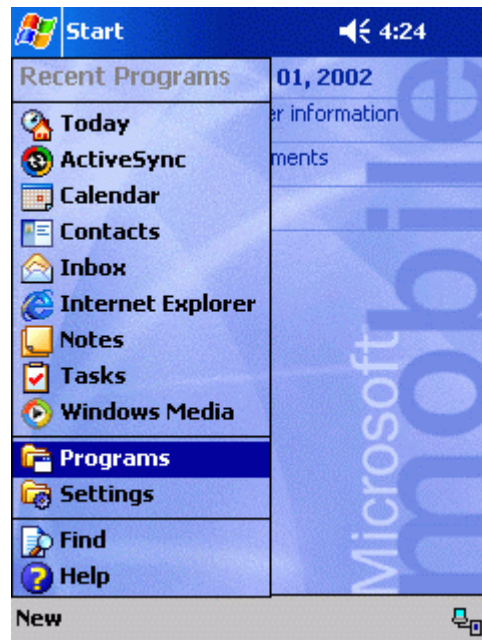
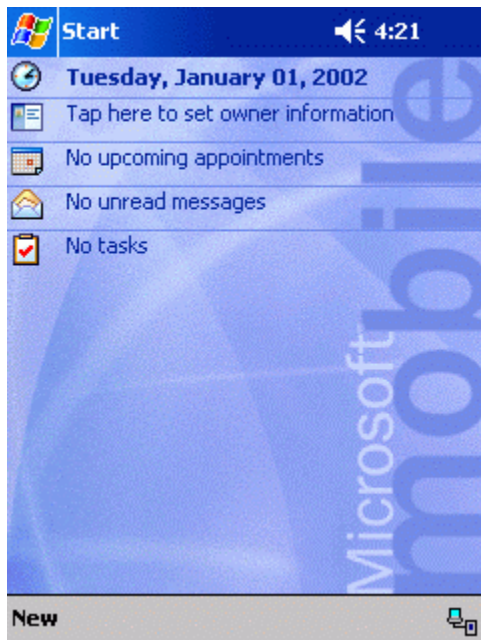


2. Right click the **PAN Service** icon. Choose **Connect** then the color of the **PAN Service** icon will turn red, meaning that the connection is established successfully. By default, you will get the LAN IP 192.168.2.100 after the connection is complete.



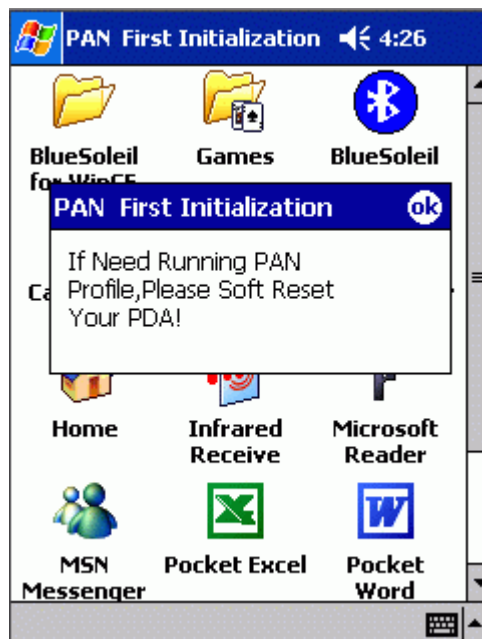
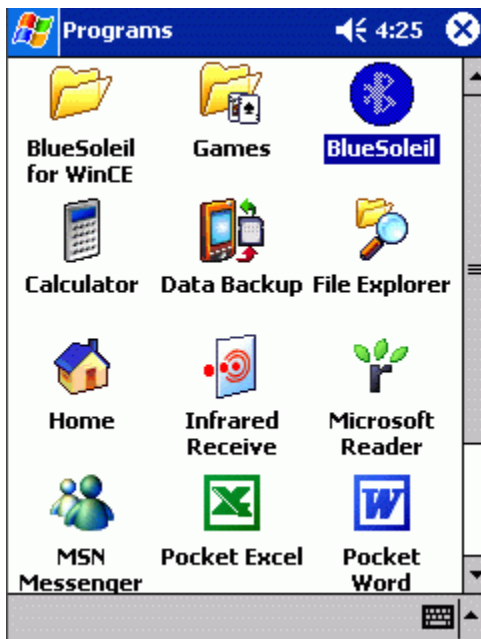
6.8. Configure IVT BlueSoleil CE

1. Click "Start".
2. Select "Programs".



3. Click "BlueSoleil" icon.

4. Then you get a message as below, asking you to Soft reset your PDA.

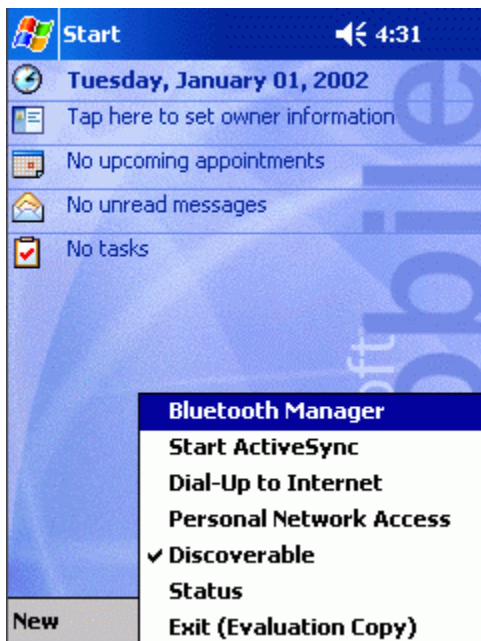


5. After reset your PDA you will find a "BlueSoleil" icon in list then click it.

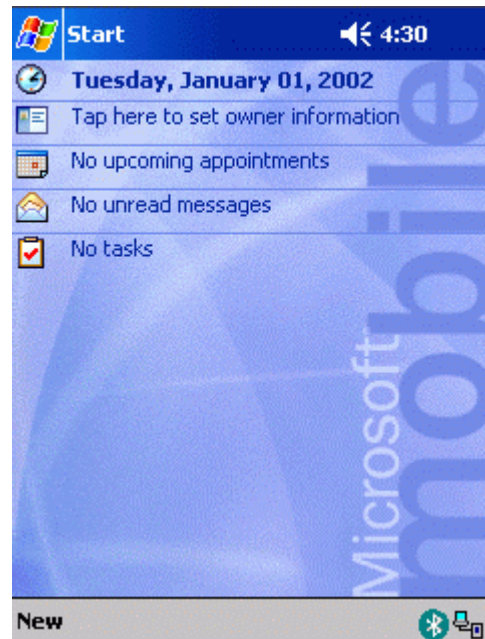
6. Then you will find this icon in status bar. Click on this icon.



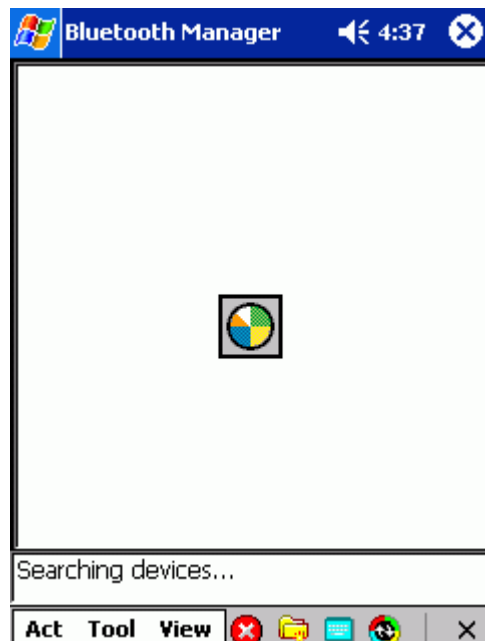
7. Select "**Bluetooth Manager**" item.



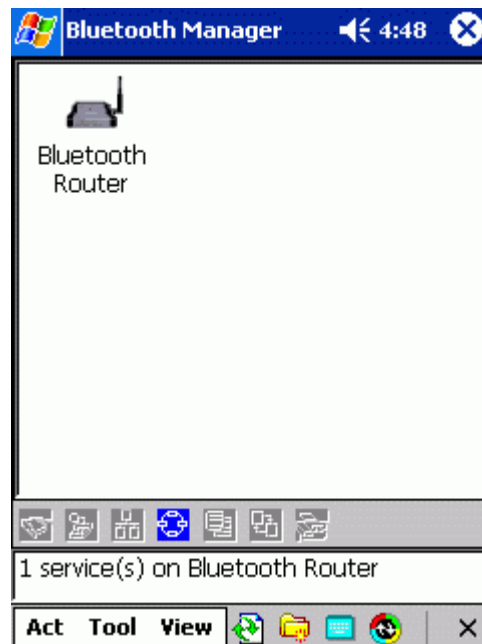
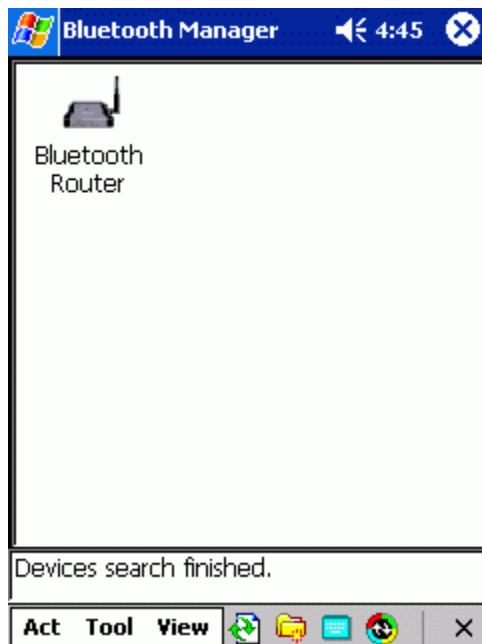
9. After search is finished, then you'll see a "**Bluetooth Router**" icon. Click it.



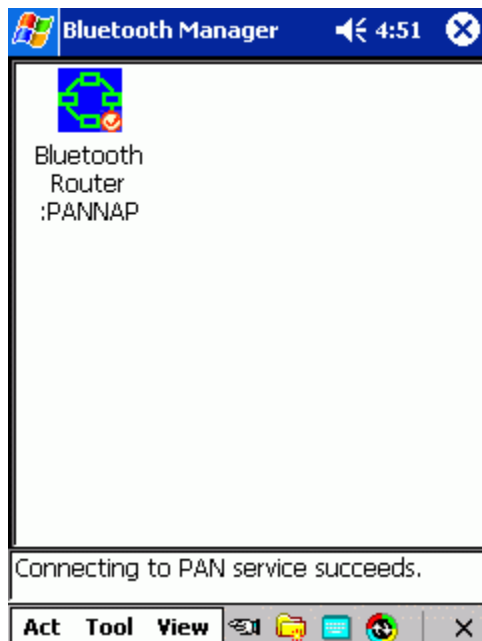
8. Now it automatically searches for devices...



10. One service of "**Bluetooth Router**" will be discovered, click the light icon.



11. Connection to PAN service is successful.



Chapter 7 Configuring Router

7.1. Network Settings and Software Installation

This chapter will show you how to configure the Bluetooth PAN to function in your network and gain access to the Internet through your Internet Service provider (ISP). Your ISP may require the use of a Host Name and Domain Name. Furthermore, you will need to set the WAN Configuration Type on the Router's Setup tab from the information given by your

ISP. **You will need this setup information from your ISP.** If you do not have this information, please contact your ISP before proceeding. The instructions from your ISP tell you how to set up your PC for Internet access. Since you are now using this Bluetooth PAN to share Internet access among several computers, you will use this setup information for detailed configuration.

***Please plug the LAN cable into the PAN bridge and power it on.**

***Please make sure your Bluetooth client is connected to this access point, and your browser proxy setting is disabled.**

7.1.1 Start-up and Log in

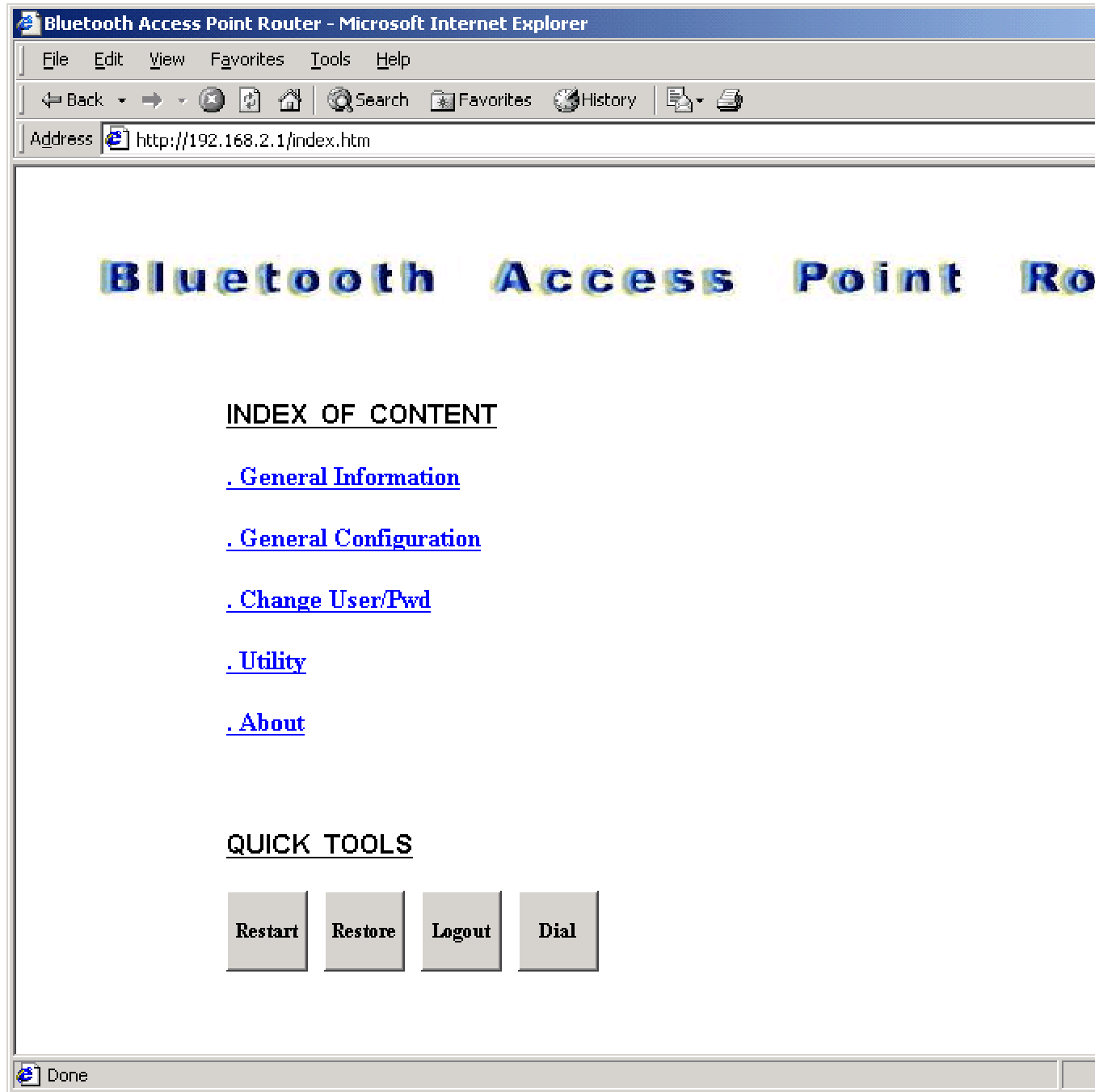
Activate your browser, and disable the proxy or add the IP address of this product into the exceptions. Then, type this product's IP address in the Location (for Netscape) or Address (for IE) field and press ENTER. For example: <http://192.168.2.1>. After the connection is established, you will see the web user interface of this product. There are two appearances of web user interface: for general users and for system administrator. Before you make any changes to the access information. Leave the Password field empty with "root" in the User field, and click the **Logon** button (you can configure the user/password later in the "**Change User/Pwd Page**").

Open your web browser, and enter **192.168.2.1** into the web browser's Address bar, then press the **Enter** key.

This product provides a Web based configuration scheme that is configurable by Netscape Communicator or Internet Explorer. This approach can be adopted in any MS Windows or Macintosh platform.

7.1.2 Login and Index page

The **Login** page will appear. Before you make any changes to the access information, leave the Password field empty with "root" in the User field, and click the **Logon** button (you can configure the user/password later in the "**Change User/Pwd Page**").



In the **Index** Page, there are five hyper links for diverse configurations. This Bluetooth PAN provides software-reset function which enables users to restart the device through wireless web configuration. You can click **Restart** to reset the device in any configuration pages which shows the **Restart** button.

If you'd like to logout of the web configuration (for security reasons), click the **Logout** button and the browser returns to the **Login** Page. In case you forget to leave the web configuration, the system will automatically cancel the logon process after 3-minutes. You will have to login again to finish uncompleted tasks.

7.1.3. General Information shows the real-time status for the Bluetooth wireless network.

Bluetooth Access Point Router - Microsoft Internet Explorer

File Edit View Favorites Tools Help

Back Forward Stop Home Search Favorites History Print

Address <http://192.168.2.1/status.htm>

Bluetooth Access Point Router

[Index](#)


> General Information

(Click on the Host icon to delete that PAN user)

Getway Information

Global IP(WAN)	0	0	0	0
System IP(LAN)	192	168	2	1
Gateway(LAN)	192	168	2	1
Netmask(LAN)	255	255	255	0
DNS	168	95	1	1
Op Mode	<input type="text" value="Routing Mode"/>			
BT Name	<input type="text" value="Bluetooth Router"/>			
BT Address	<input type="text" value="00:10:60:A2:00:38"/>			
WAN Type	<input type="text" value="PPPoE"/>			
Connectability	<input type="text" value="Enable"/>			
Security Mode	<input type="text" value="No Security"/>			

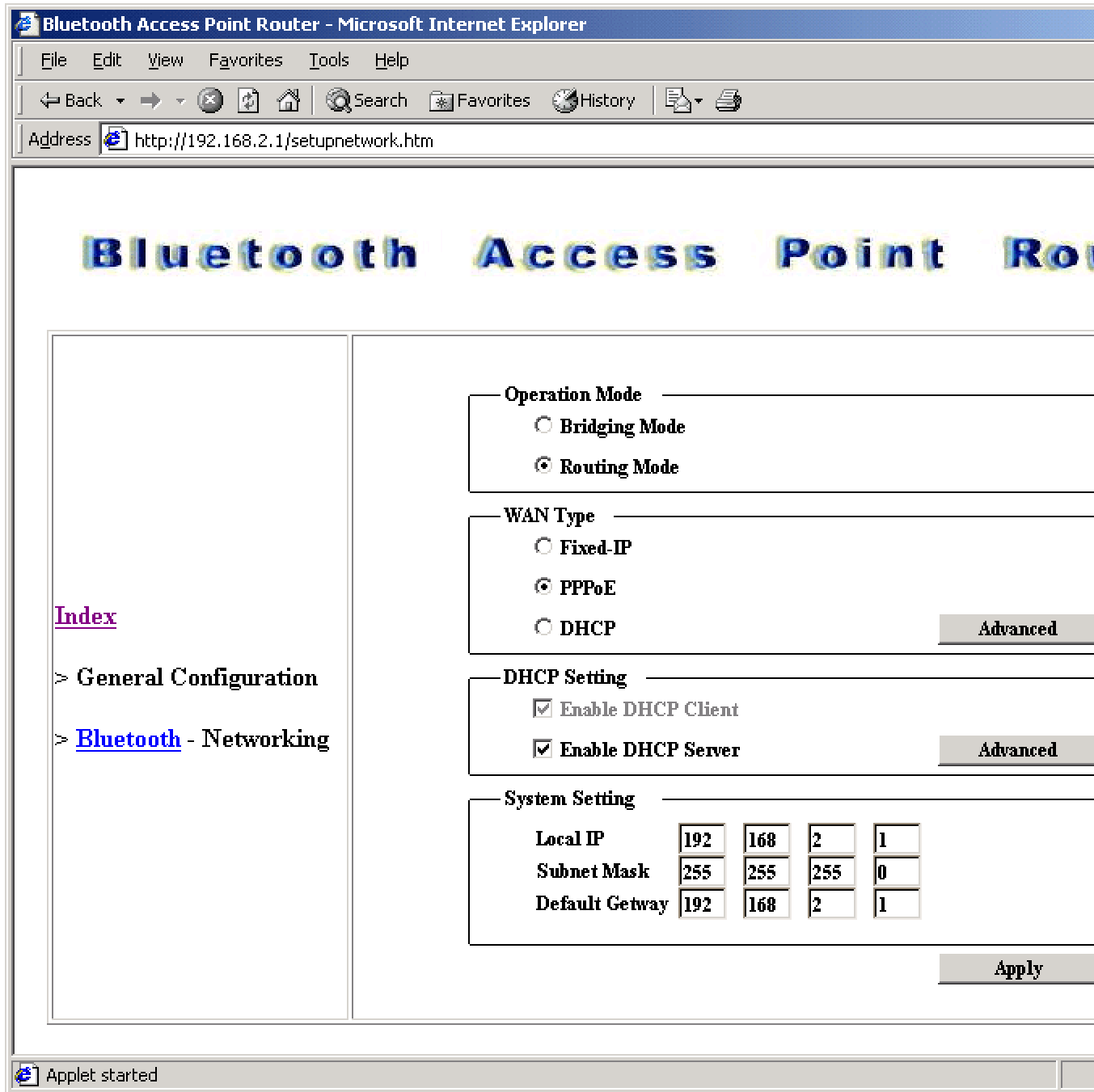
Host List

	00:02:5B:...
	SONY-PC...

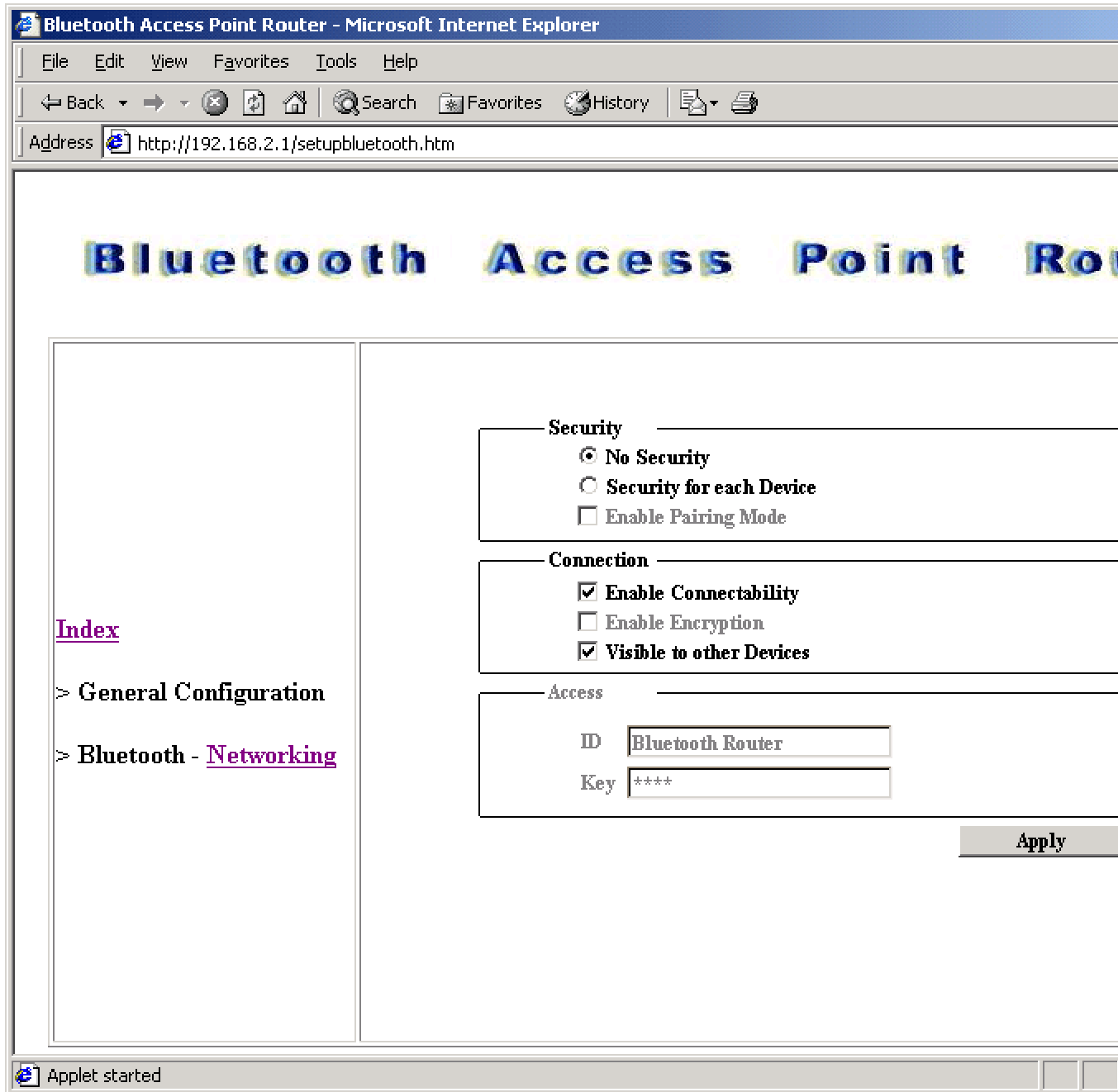
Applet started

7.1.4. General Configuration enables you to change the network settings and configure the Bluetooth connection.

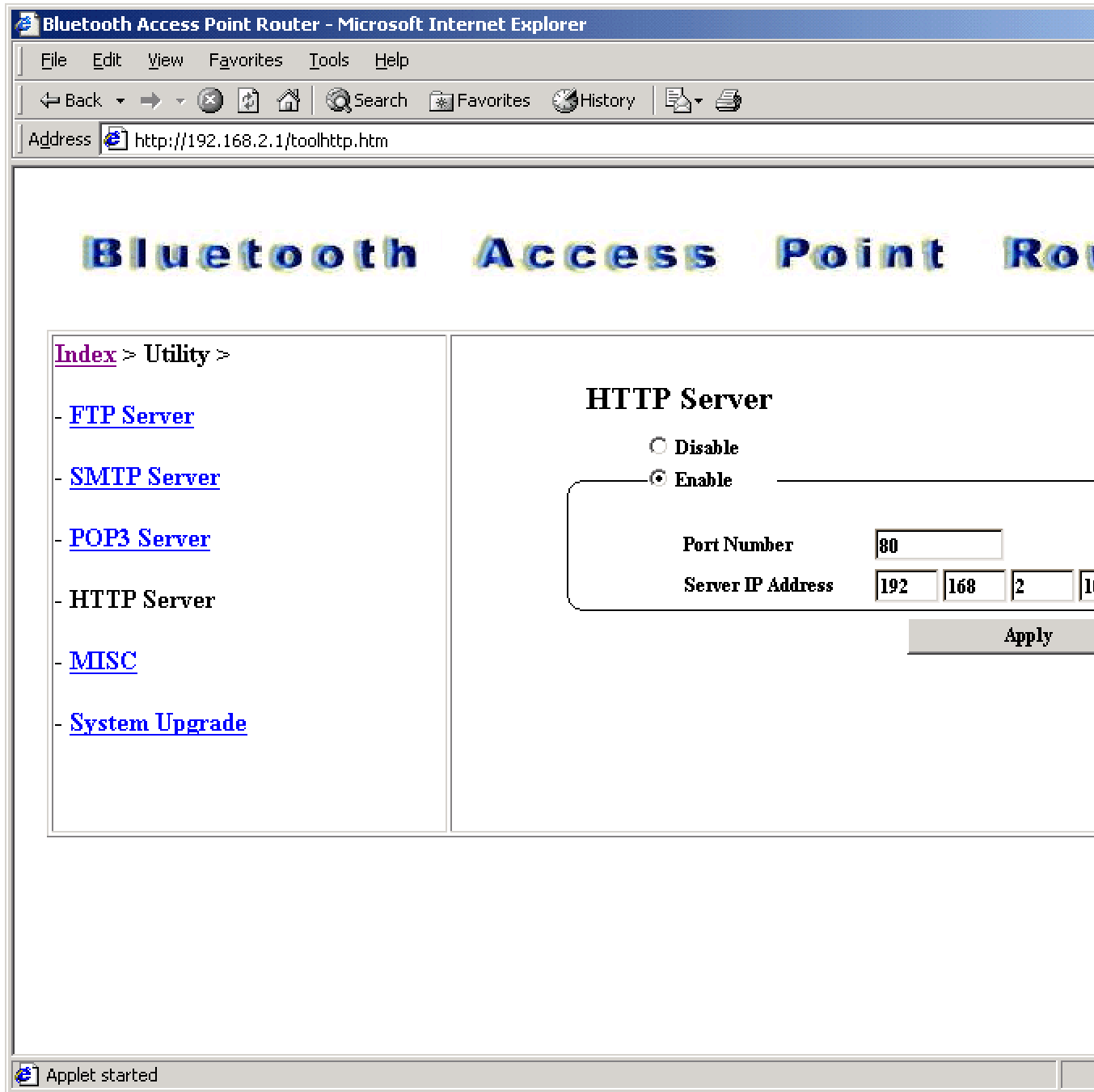
Below is the network settings page.



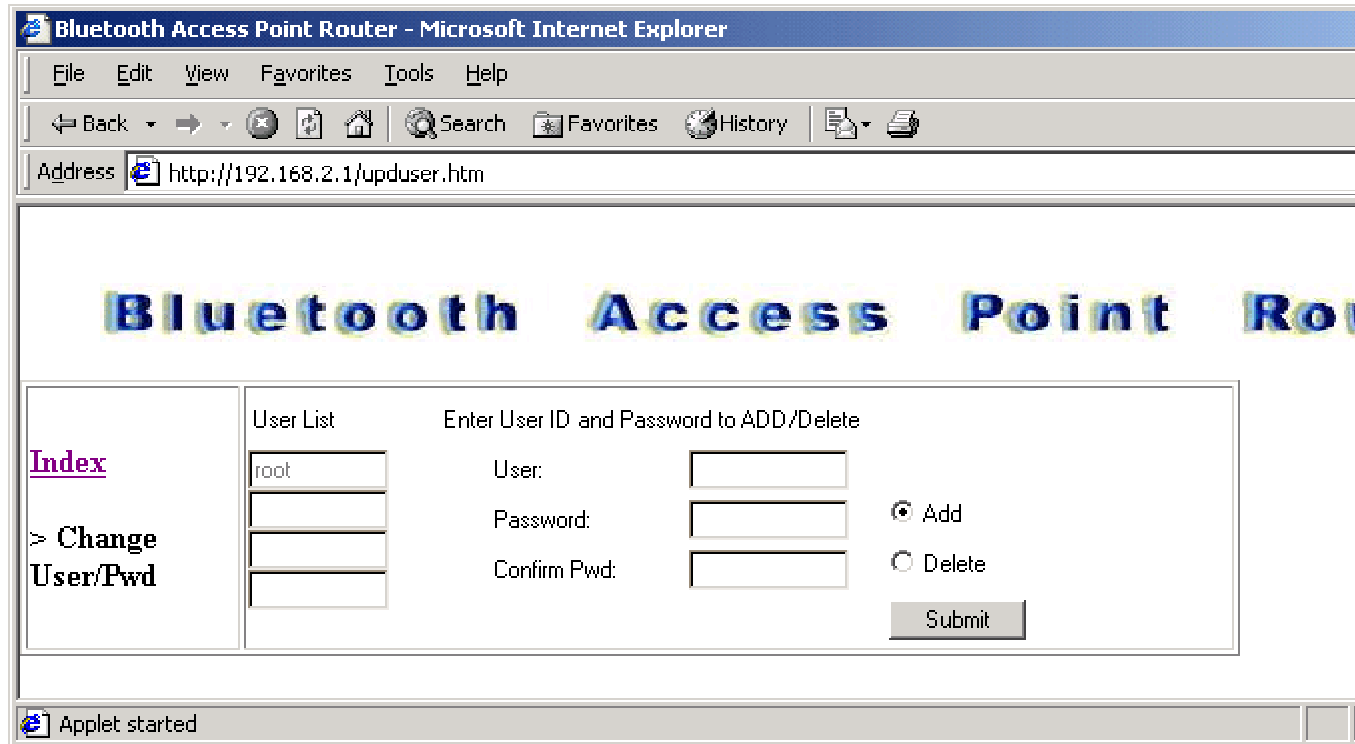
Below is the Bluetooth settings page.



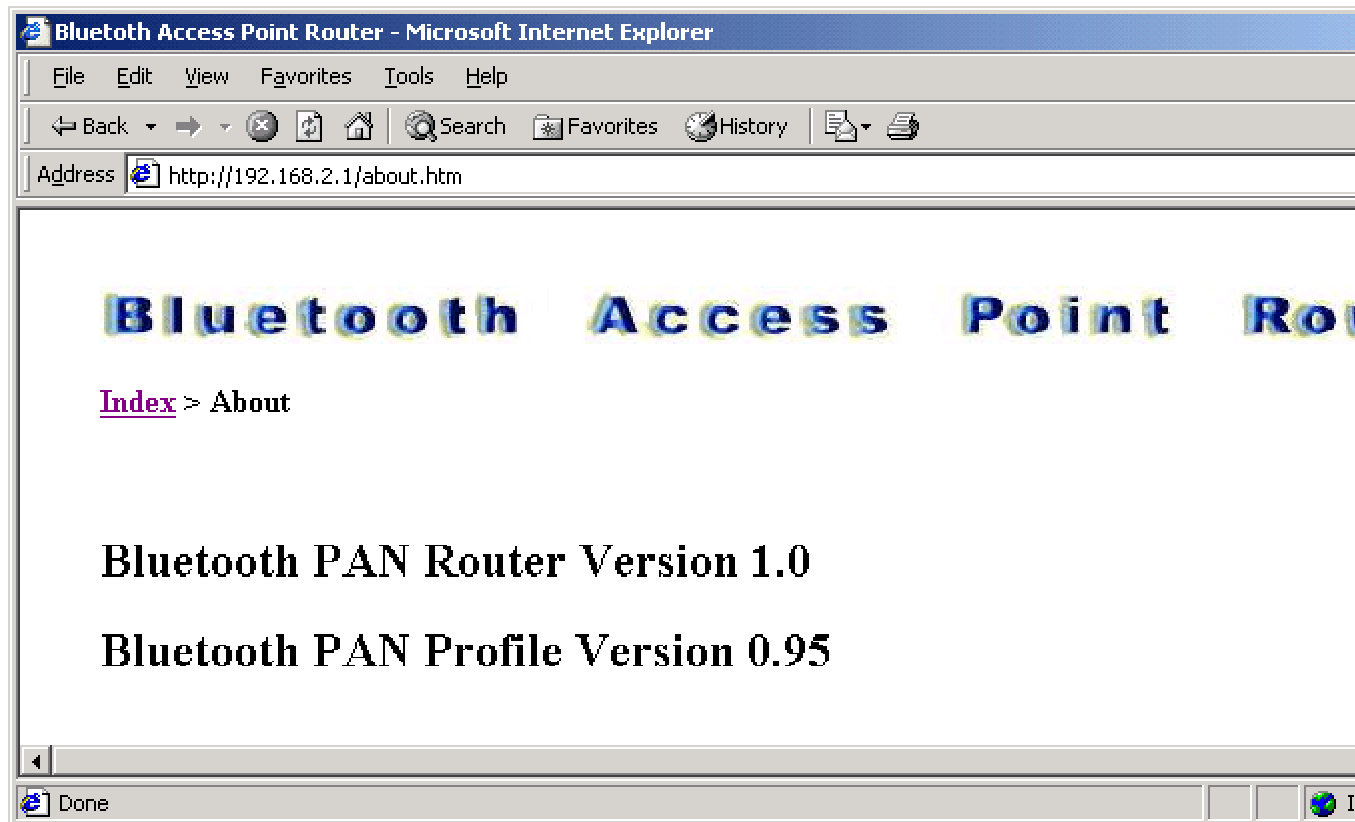
7.1.5. Utility provides four virtual servers and a firmware upgrade.



7.1.6. Change User/Pwd is where you can modify the web authentication password.

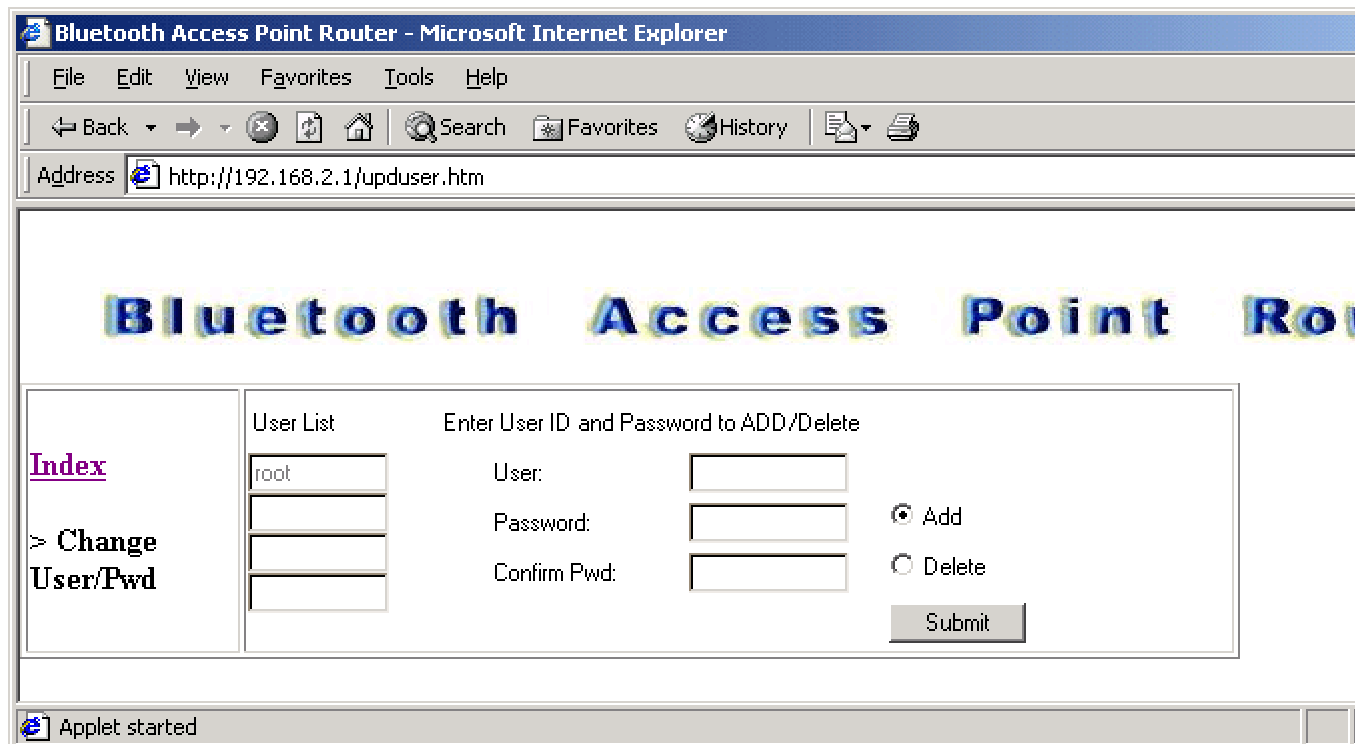


7.1.7. **About** provides product information and custom support



7.1.8. **Change User & Password**

In order to access the web configuration and prevent others from changing the import information, we strongly recommend you to change the user/password.



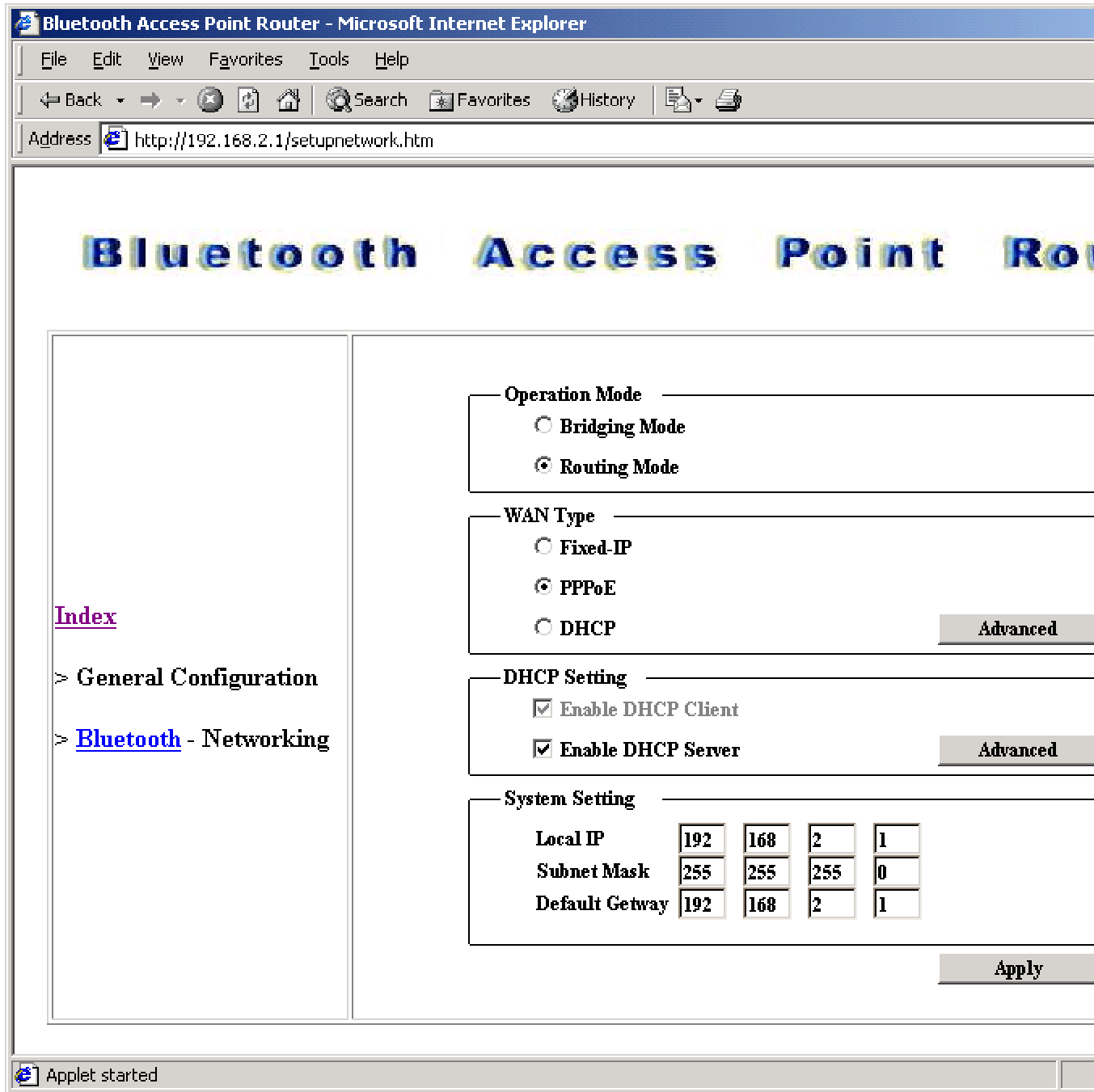
1. In the **Index** Page, click the **Change User/Pwd** link.
2. According to the leftmost User List, you can add 4 users at most who are able to access the web configuration by selecting **Add** option. Enter **User** (up to **32** characters), and **Password** (up to **16** characters).
3. If you would like to delete a specific user, enter the **User**, select **Delete**, and click **Submit**.

The system will indicate whether or not you entered the right settings for the page.

7.1.9. Routing Mode

By default, the Bluetooth access point with broadband router is set to the Routing mode (PPPoE) that enables NAT (Net Address Translation Protocol) function and performs a wireless portal for a secure sub-network. The following settings are required for basic routing network:

1. Click the **General Configuration** in the **Index** Page. By default, it shows the **Networking** Page.



7.2.0. Bridging Mode

If you are connecting to a local network and the device performs simply a wireless AP (Access Point), you can select the **Bridging Mode** as shown in figure as blow, At this moment, the device becomes one of other existing LAN devices. All routing functions are disabled except the **Enable DHCP Client** option.

*Be sure to enable DHCP client, or the system can **NOT** work as you did not properly set the LAN IP for the Bluetooth PAN Router in Bridging Mode*

1. LAN IP Address:

This product's IP address - The default address is 192.168.2.1 You can change it when needed.

2. WAN Type:

WAN connection type of your ISP - You can click **Change** to choose the correct type from the following four options:

A. Static IP Address: ISP assigns you a static IP address.

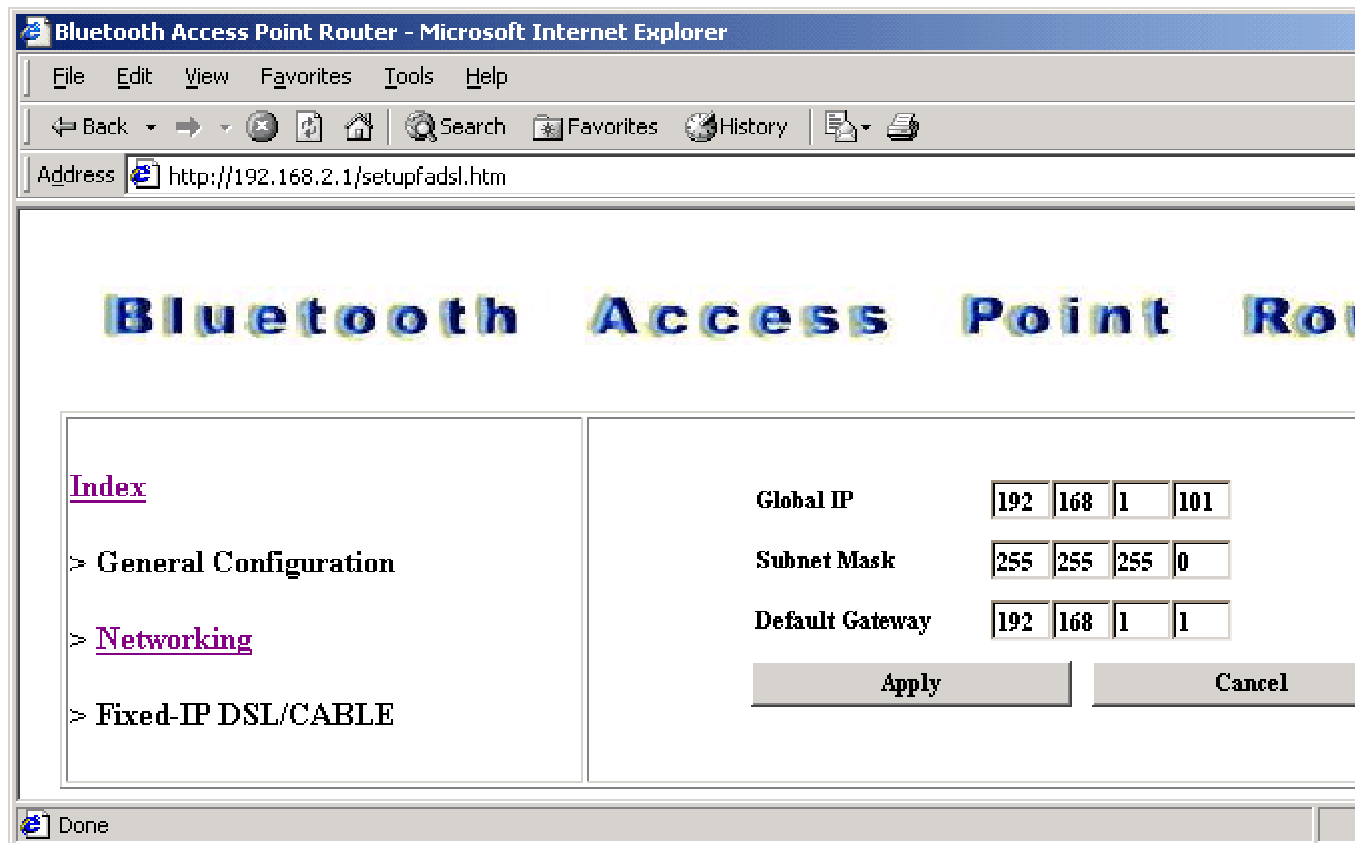
B. Dynamic IP Address: Obtain an IP address from ISP automatically.

C. PPP over Ethernet: Some ISPs require the use of PPPoE to connect to their services.

Static IP Address

When connecting through a Static IP connection, be sure to have

- 1) Your broadband - configured PC's fixed Internet IP Address,
- 2) Your broadband configured PC's Computer Name and Workgroup Name,
- 3) Your Subnet Mask,
- 4) Your Default Gateway, and
- 5) Your Primary DNS IP address.



Dynamic IP Address

When connecting through a Dynamic IP connection, be sure to have

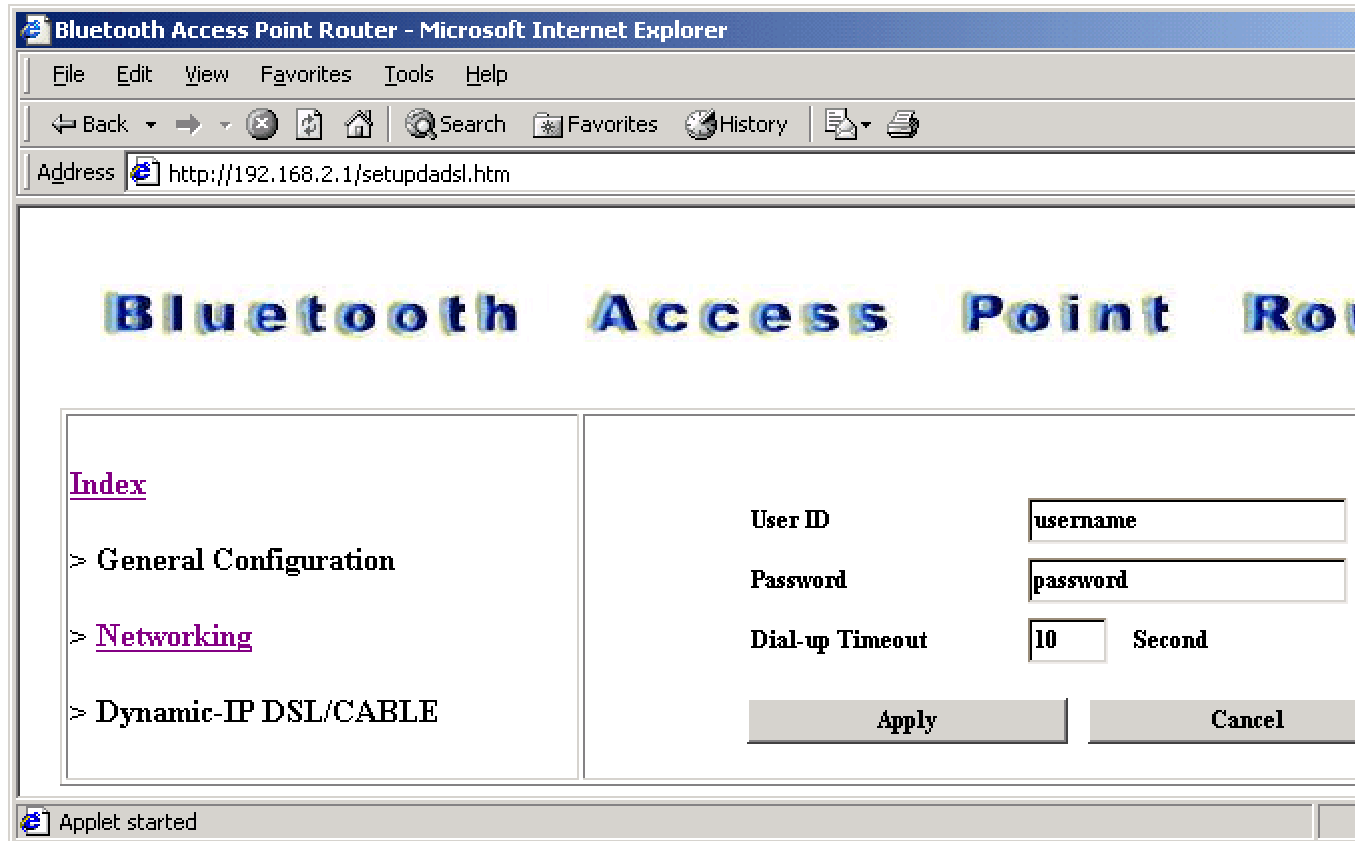
1. **Host Name** – optional, required by some ISPs, for example, @Home.

PPP over Ethernet

1. When connecting through a PPPoE connection, be sure to have **Your PPPoE User Name, and Your PPPoE Password.**

- 1) **PPPoE Account and Password:** the account and password your ISP assigned to you. If you don't want to change the password, keep it empty.
 - 2) **PPPoE Service Name:** optional. Input the service name if your ISP requires it.
 - 3) **Maximum Idle Time:** the time of no activity to disconnect your PPPoE session. Set it to 0 will disable this feature.
2. On the fourth block, enter the **Local IP** and **Subnet Mask**. This is the Router's IP Address and Subnet Mask as seen on the internal LAN. The default value is 192.168.2.1 for **IP Address** and 255.255.255.0 for **Subnet Mask**.

3. Enter the **Default Gateway** which is the same as **Local IP** in this device.
4. Click the **Apply** button to save the settings if you wish to configure other settings before restarting the system. The system will store all parameters and show the proper information to see whether it successfully writes into the registry memory. If you have finished all the settings, directly click the **Restart** button to re-boot the device.



*Be sure to enable DHCP client, or the system can **NOT** work as you did not properly set the LAN IP for the Bluetooth PAN Router in Bridging Mode.*

Chapter 8 Troubleshooting

Q.1: So far, which versions of Bluetooth software are supported by this access point?

A.1: So far, we know this access point can support

IVT BlueSoleil 1.08

IVT BlueSoleil for WinCE1.0

Widcomm BTW1.3.2.7

Widcomm BTW-CE1.3.1.46

Q.2: I'm using Windows XP. Why can't I log in web management page?

A.2: For Windows XP users, it is necessary to download JRE from Sun Microsystems (<http://www.sun.com>) or run windows update.

Q.3: Why can't I connect to Bluetooth AP?

A.3: Bluetooth AP are always displayed in My Bluetooth Places once they have been discovered, even if the remote device is out of range or not powered up. Verify that the remote member of the pair is within radio range and powered up, and then attempt the connection again.

Q.4 :Why can I connect to the access point, but not the internet?

A.4:

1.Connect to access point web manager page and check if the IP address you get from ISP server is correct or not, if the access point did not get correct IP from your ISP please plug the LAN cable into the PAN bridge and power it on. Try to get it again.