

FCC Caution:

1. The device complies with Part 15 of the FCC rules. Operation is subject to the following two conditions:
 - (1) This device may not cause harmful interference, and
 - (2) this device must accept any interference received, including interference that may cause undesired operation.
2. FCC RF Radiation Exposure Statement: The equipment complies with FCC RF radiation exposure limits set forth for an uncontrolled environment. This equipment should be installed and operated with a minimum distance of 20 centimeters between the radiator and your body.
3. This Transmitter must not be co-located or operating in conjunction with any other antenna or transmitter.
4. Changes or modifications to this unit not expressly approved by the party responsible for compliance could void the user authority to operate the equipment.

Bluetooth Application Note

Installing Bluetooth software for Windows

Network sharing setting for Windows

File transfer setting for Windows

Dial-up networking setting for Windows

FAX setting for Windows

Information Exchange setting for Windows

Information Synchronization setting for Windows

ActiveSync setting for Windows

Serial port setting for Windows

Installing Bluetooth software for WinCE

Network sharing setting for WinCE

File transfer setting for WinCE

Dial-up networking setting for WinCE

Serial port setting for WinCE

ActiveSync setting for WinCE

Installing Bluetooth on MAC O. S.

How to pair with my mobile phone

How to pair with Nokia 6310

How to pair with Nokia 8910

How to pair with Ericsson T39m

How to pair with Ericsson T68

How to sync with Ericsson T68 via XTNDConnectPC

Troubleshooting

1. Bluetooth software installation

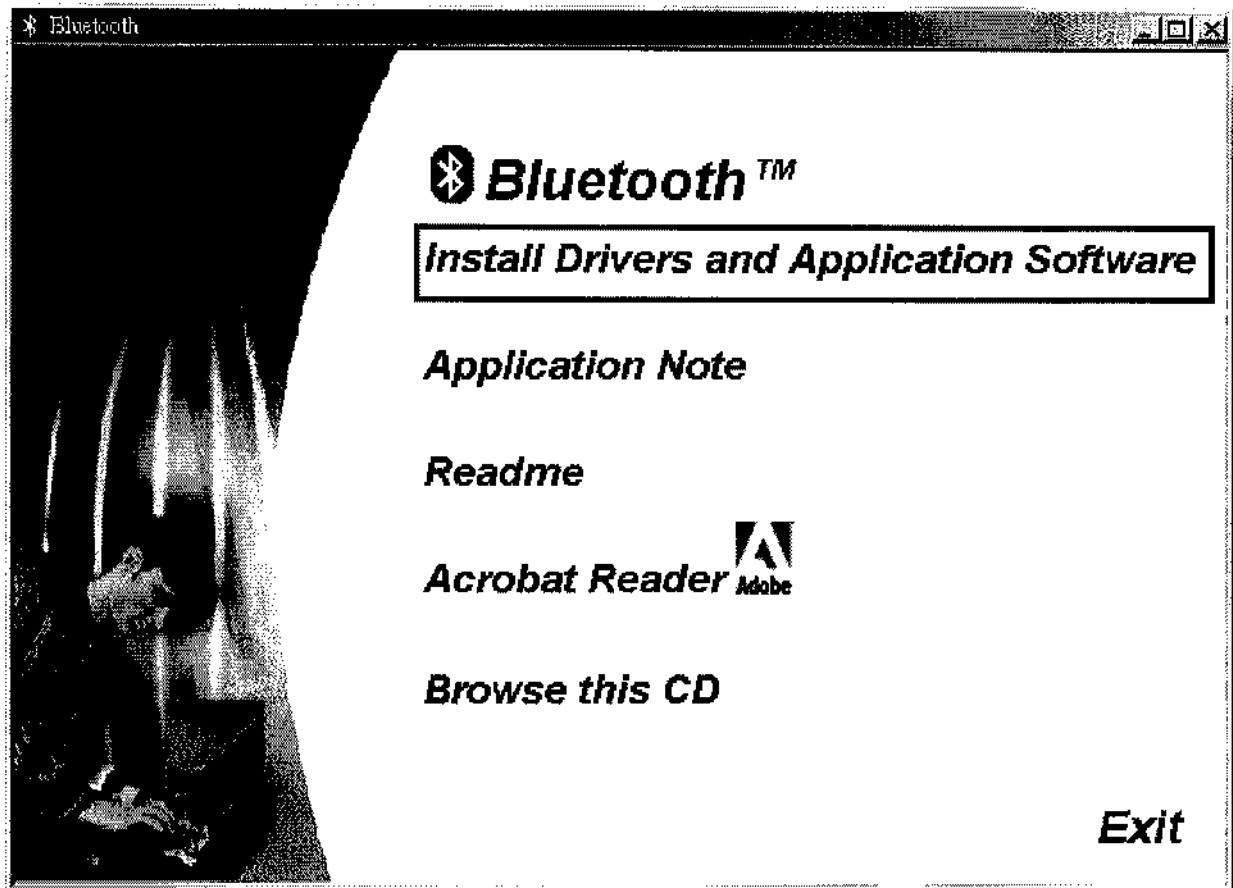
For CF Bluetooth card please install the driver before installing Bluetooth software, the driver can be located in BTDF of the driver CD.

For USB Bluetooth adapter please install Bluetooth software before inserting the USB adapter.

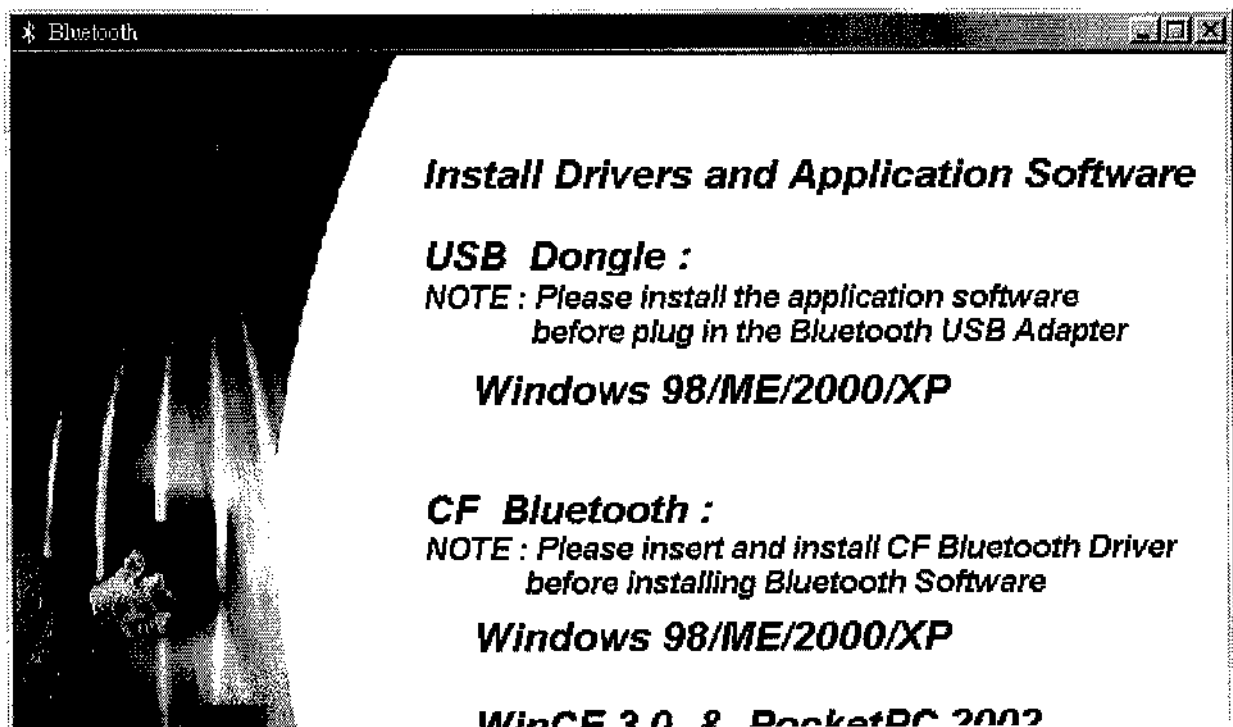
Installing Bluetooth software for Windows

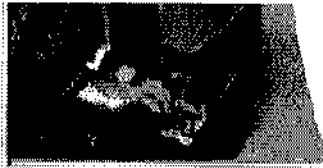
Place installation CD into PC and setup should launch automatically.

If setup does not launch, use Windows Explorer to navigate to the appropriate CD-ROM drive and run "Bsetup".



Please select your device and O.S..





Back Exit

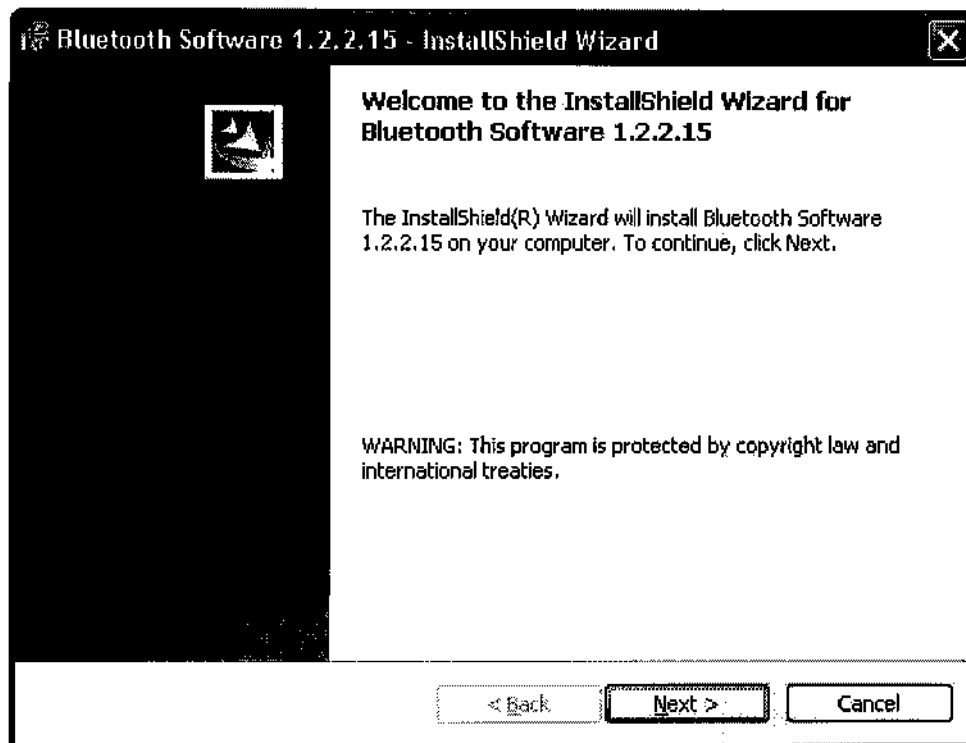
Complete these steps to install Bluetooth software:

Exit all applications.

InstallShield Wizard setup dialog box is displayed. If the setup program doesn't auto-run, manually start the setup program.

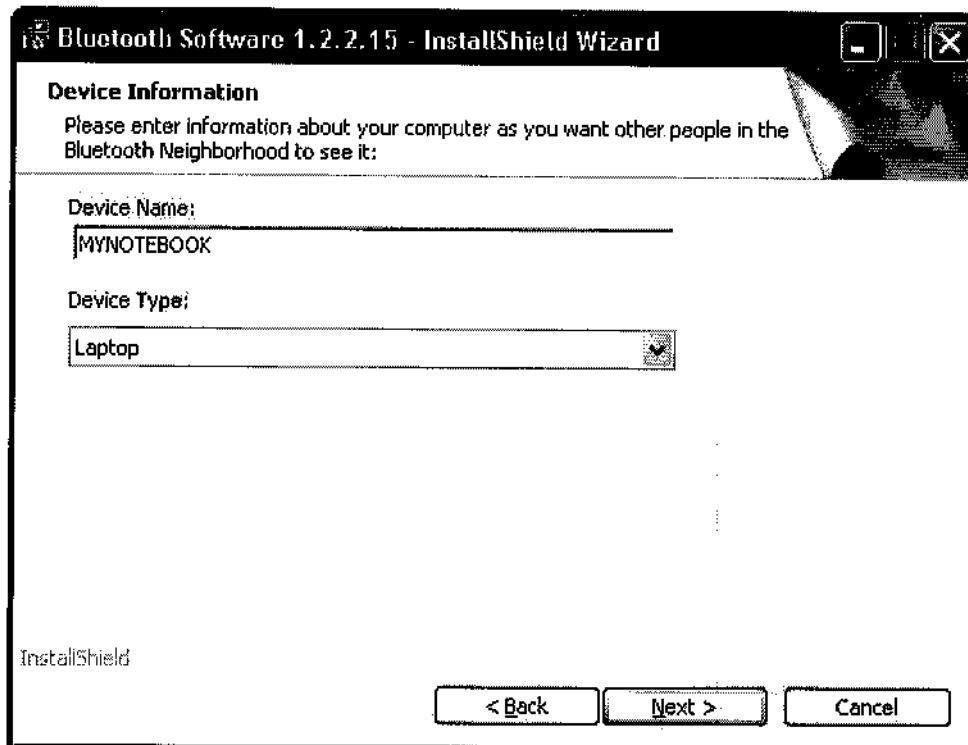
Follow the instructions on the screen:

On the *Welcome* screen, click the Next button.

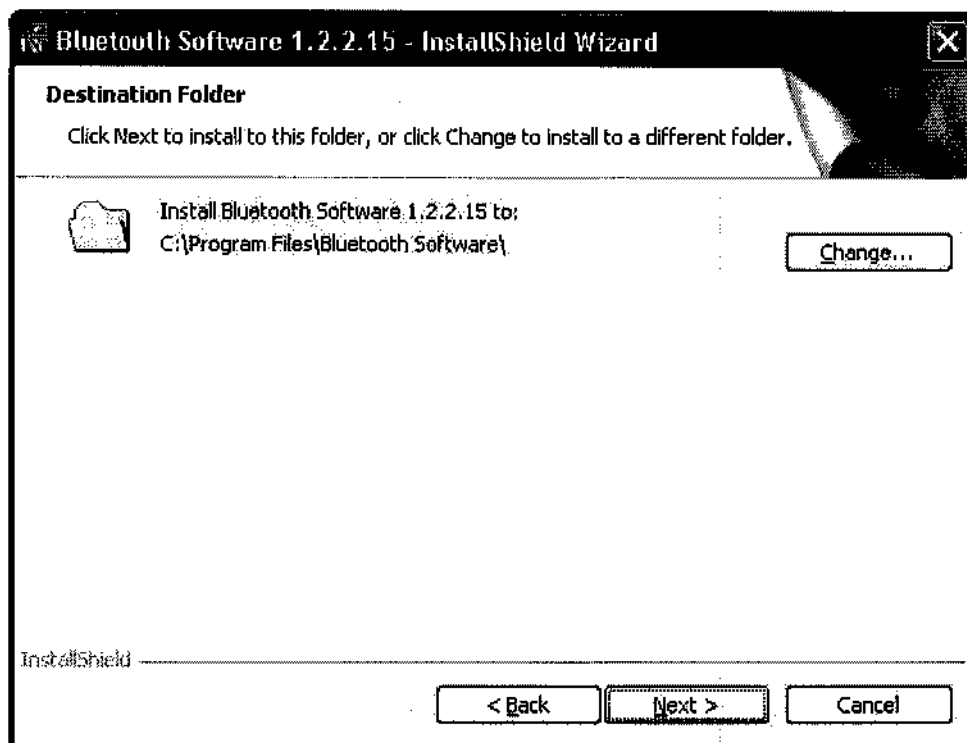


When the *License Agreement* screen is displayed, read the License Agreement, then click the radio button to the left of "I accept the terms in the license agreement" and click the Next button.

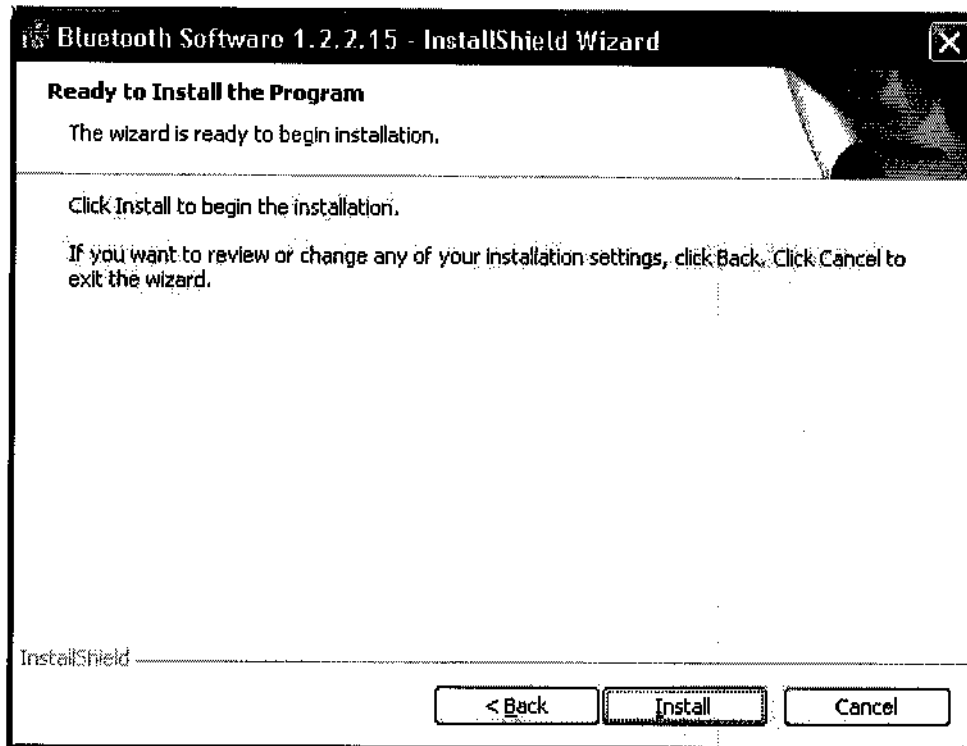
Choose the Device Type for your system, and click Next.



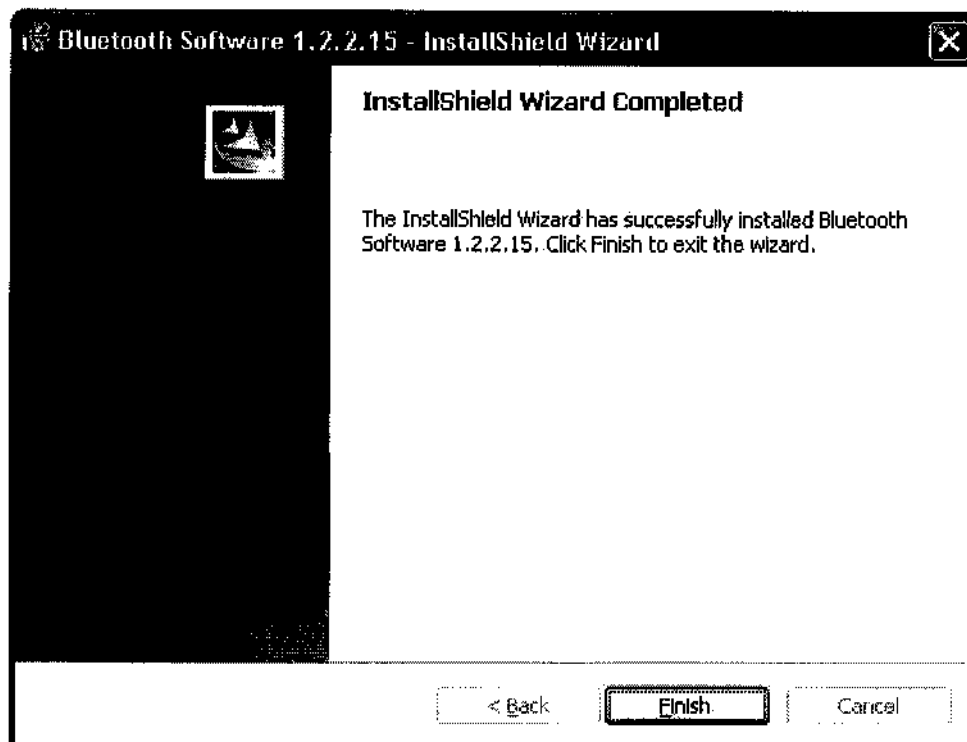
On the *Destination Folder* screen, click the Change button to browse to a new destination folder for the Bluetooth software. Otherwise, click the Next button to accept the default folder.



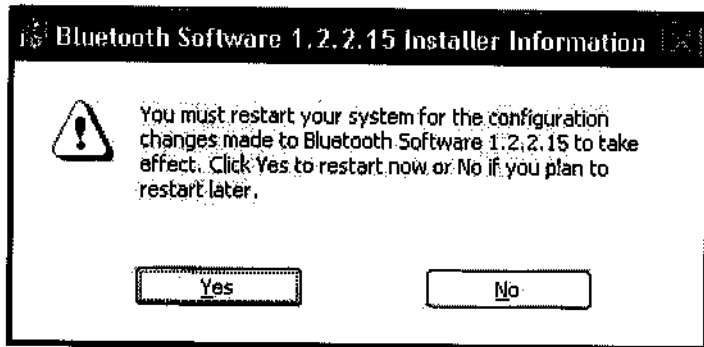
The system is ready to install the Bluetooth software. If you need to review or change any settings, click the "Back" button. Click the "Cancel" button to exit the Wizard. Otherwise, click the "Install" button.



When the installation is completed, click the "Finish" button on the *Completed* screen.



Click "Yes" to restart your computer. If you plan to restart later, click "No".

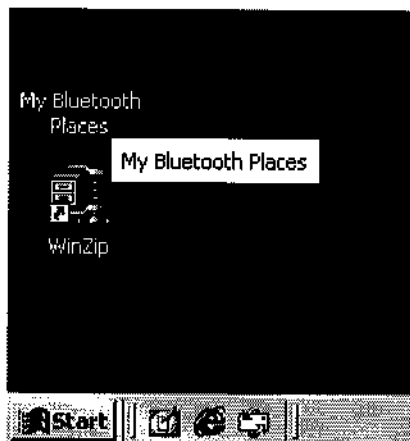


After reboot and Windows comes back up again, insert USB adapter into the PC's USB port and the system will install the driver for your device automatically.

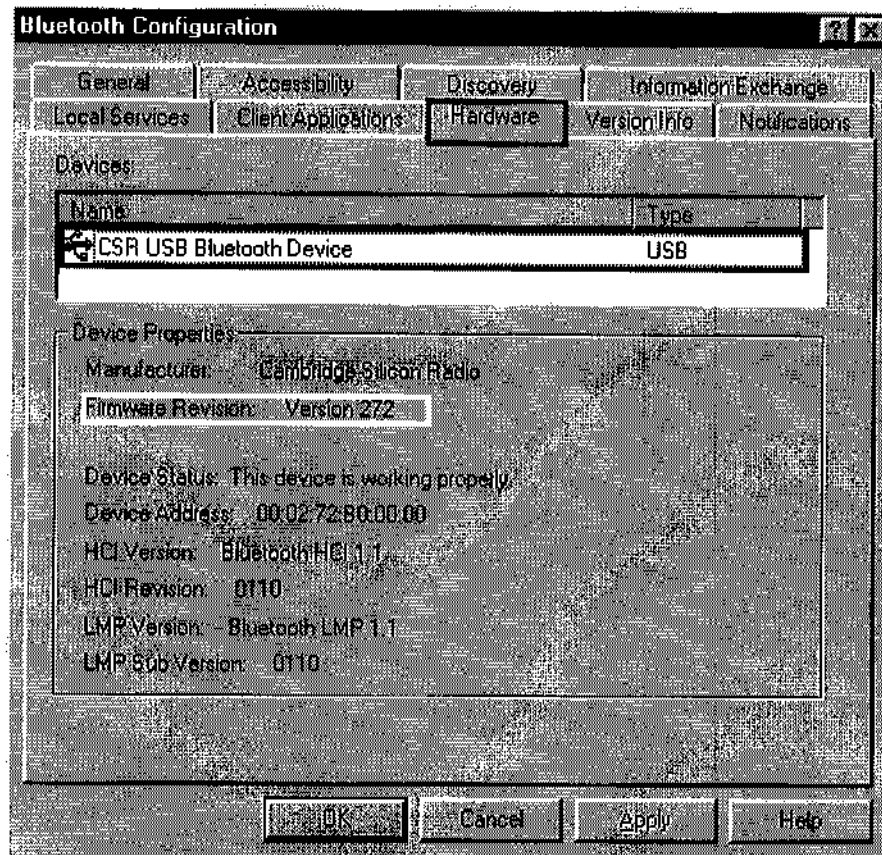
Do not reboot. Your device is now ready to be used.

To verify the installation was successful.

Right click the " My Bluetooth Place" icon and select "Setup" configuration.



Under the "Hardware" tab, verify the Bluetooth address is present along with the driver and firmware version info.



If such information is not present, please unplug then plug in the USB adapter to initiate the driver.

For CF Bluetooth card, please reboot the system with the CF Bluetooth card securely inserted in the PCMCIA slot.

Repeat the installation steps for other USB adapters or CF card on other PCs.

2. Network sharing setting for Windows

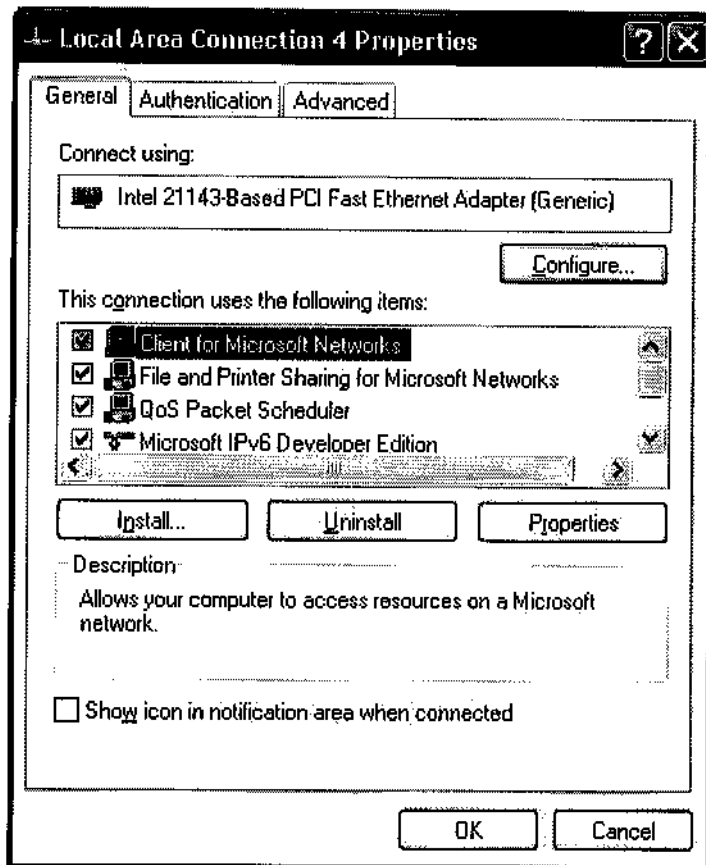
The Network Access service permits a Bluetooth enabled PC (client) to access the Internet via another Bluetooth enabled PC (Server) that already has Ethernet connection.

Windows network sharing setting

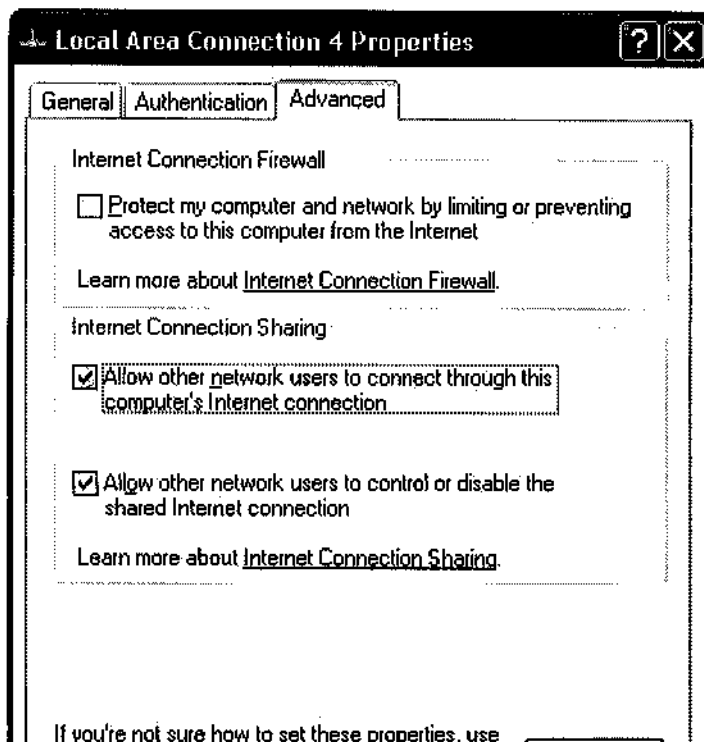
PC to PC (Windows 2000 or Windows XP)

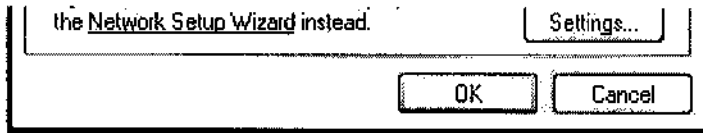
1. To enable Internet Connection Sharing on the server PC
2. Click on Start menu-->Settings -->Network and Dial-up Connections and find your Local Area Connection (LAN) that is connected to the Internet.

3. Right click the active LAN connection to open the "Properties" dialog box.

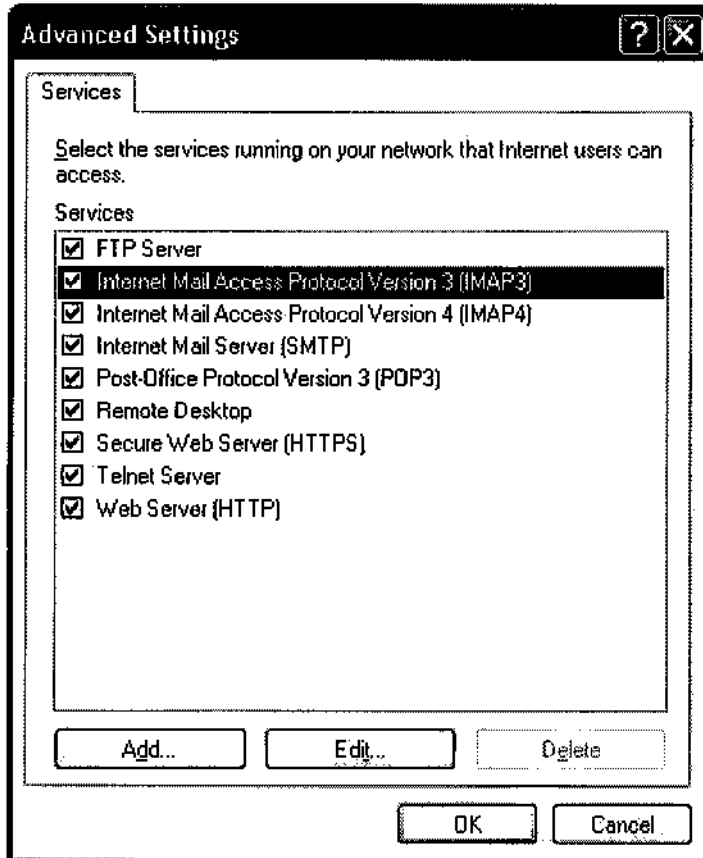


4. Click on "Advanced" tab and select the "Internet Connection Sharing", checkbox to enable Internet sharing.



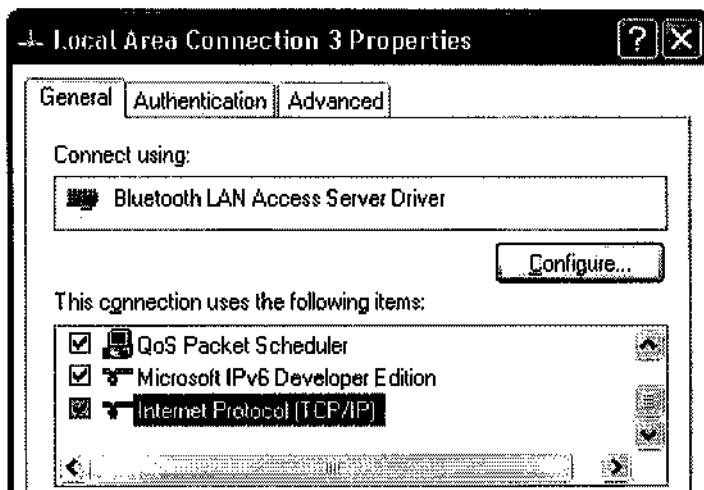


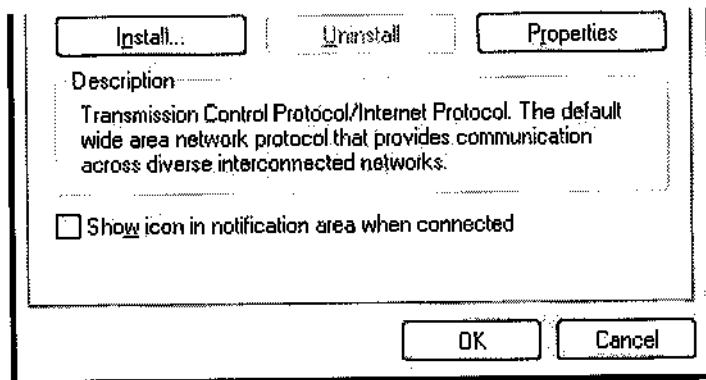
5. Click on "Settings..." button and select the services you wish to provide other Bluetooth devices. Click "OK" to save the changes.



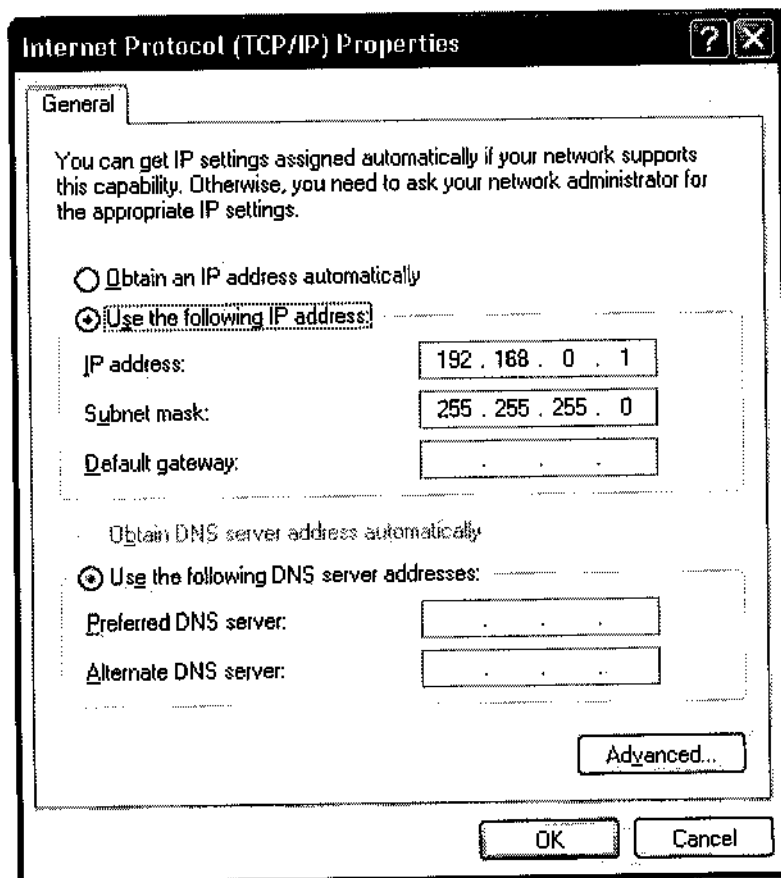
6. Go back to the "Network and Dial-up Connections" window, right click the "Bluetooth LAN Access Server Driver" and select "Properties"..

7. Under "General" tab, click on "Internet Protocol (TCP/IP)" and "Properties".





8. Under "General" tab, assign a virtual IP as shown in the picture below. Then click "OK" to save the changes.

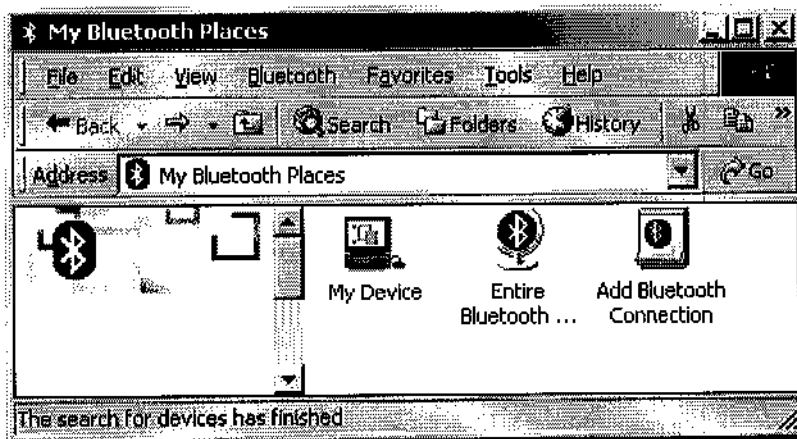


9. This allows the server PC to act as a DHCP server towards the client PCs.

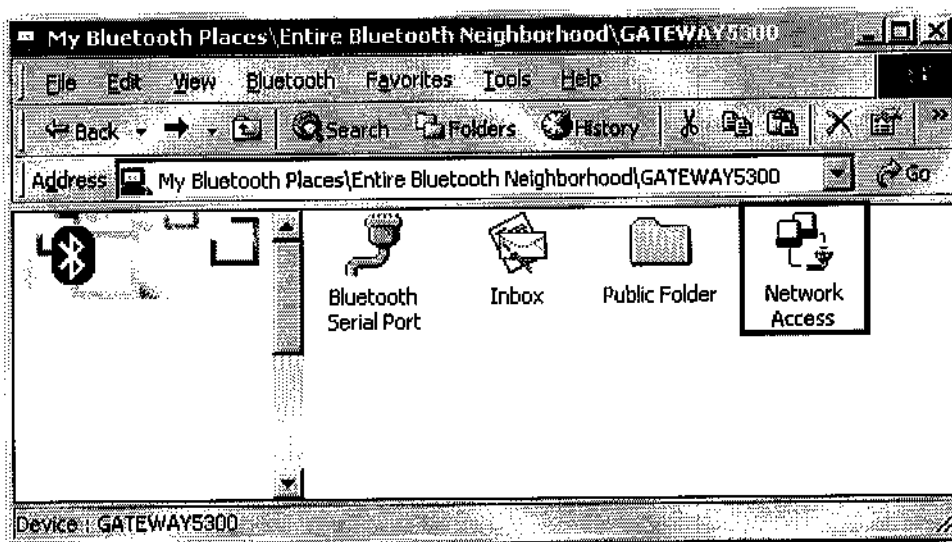
NOTE: For Win98SE and WinMe, please download and install WinRoute on the Server PC to allow DHCP service.

10. On the client PC, launch the Bluetooth software stack by clicking the "My Bluetooth Places" icon located on the desktop.

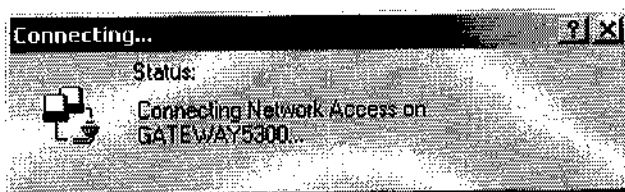
11. Double click the "Entire Bluetooth Neighborhood" icon to search for other Bluetooth devices nearby.



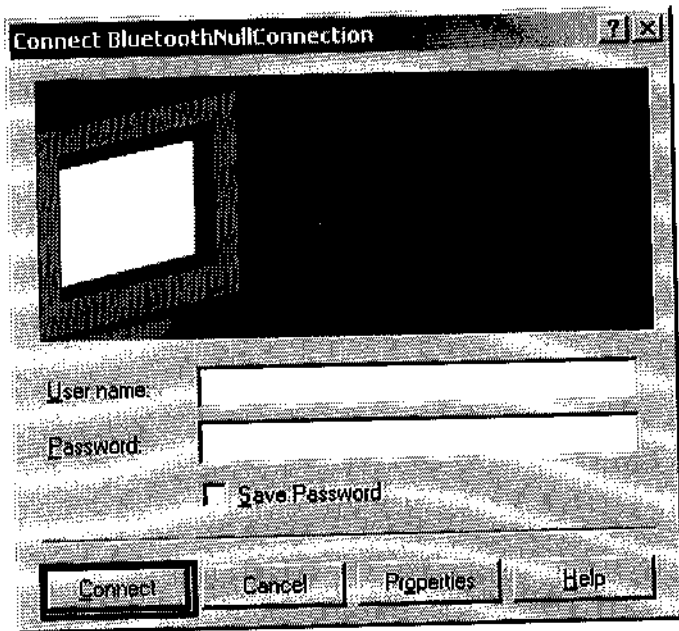
12. After searching is completed, locate the computer name of the server PC and double click it to discover the Bluetooth services it has to offer. (i.e. Bluetooth Serial Port, Dial-up Networking, File Transfer, Network Access, etc.).



13. Click on the "Network Access" icon to connect to the shared Internet connection on the server PC.



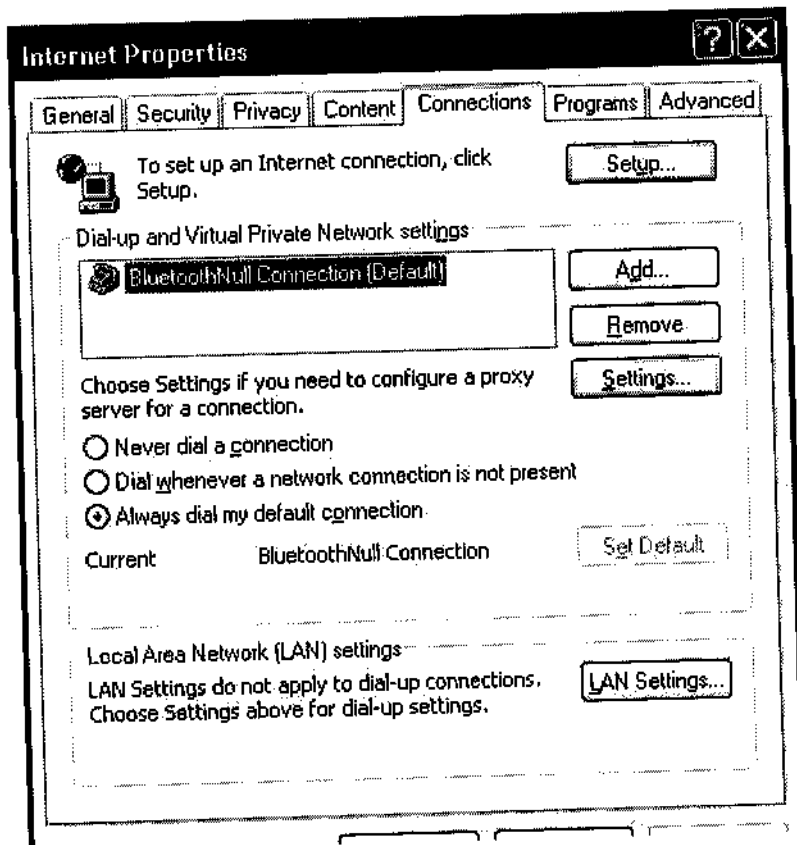
14. Click OK without entering any username or password. If one is already present, click OK anyway and it will still connect.



15. Now you can access the internet via Bluetooth.

Note: If your PC accesses the Internet via a proxy server, remember to configure the proxy setting of your browser program in the client PC. Consult your MIS personnel if you're not sure what to set.

1. To set up proxy, right click "Internet Explorer", select "Properties", select "Connections" tab. Select "BluetoothNull Connection" and click on "Settings...".



OK

Cancel

Apply

2. Select the "Proxy server" checkbox and enter the proxy address of you company and Port number.

The screenshot shows a dialog box titled "BluetoothNull Connection Settings" with a question mark and close button in the title bar. The dialog is divided into three sections: "Automatic configuration", "Proxy server", and "Dial-up settings".

- Automatic configuration:** Contains a text box for "Address" and two checkboxes: "Automatically detect settings" (unchecked) and "Use automatic configuration script" (unchecked).
- Proxy server:** Contains a checked checkbox "Use a proxy server for this connection (These settings will not apply to other connections)". Below it are text boxes for "Address" (containing "172.18.0.7") and "Port" (containing "80"), followed by an "Advanced..." button. A checkbox "Bypass proxy server for local addresses" is also present and unchecked.
- Dial-up settings:** Contains text boxes for "User name:", "Password:", and "Domain:". To the right of the "User name:" box is a "Properties" button, and to the right of the "Password:" box is an "Advanced" button.

At the bottom of the dialog are "OK" and "Cancel" buttons.

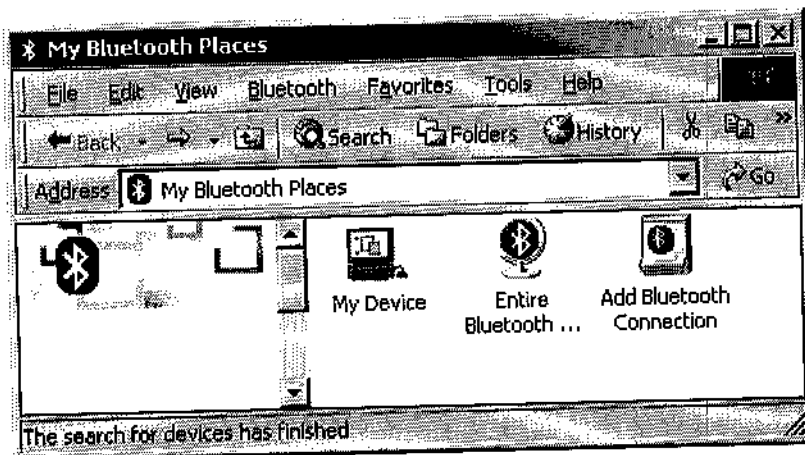
3. File transfer setting for Windows

The File Transfer service allows one Bluetooth device to perform file operations on the default File Transfer directory (and the folders and files it contains) of another Bluetooth device.

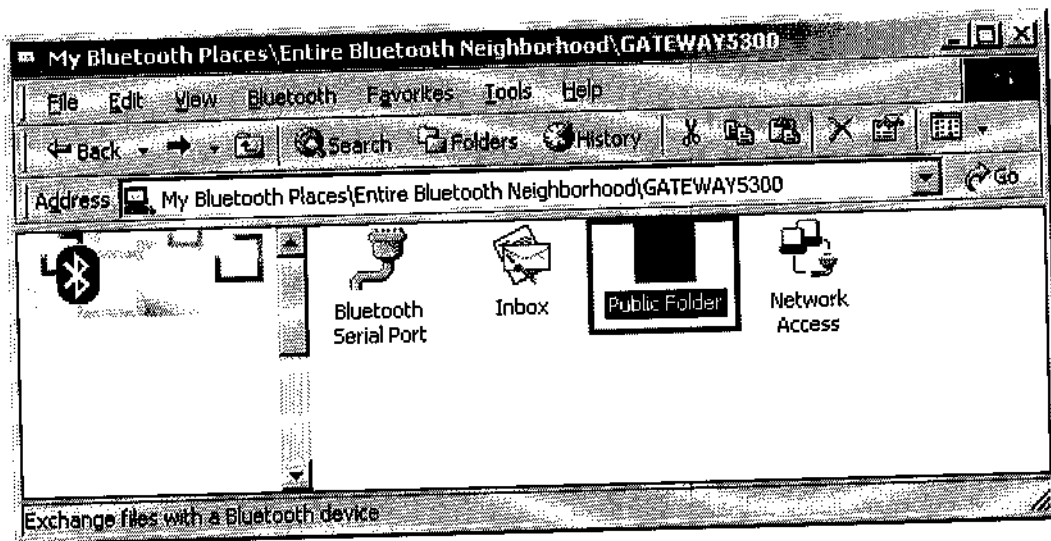
File transfer setting for Windows

PC to PC

1. After successful USB adapter setup on two PCs, launch the Bluetooth software stack on both PCs by clicking the "My Bluetooth Places" icon located on the desktop.
2. On one PC only, double click on "Entire Bluetooth Neighborhood" icon to search for other Bluetooth devices nearby.



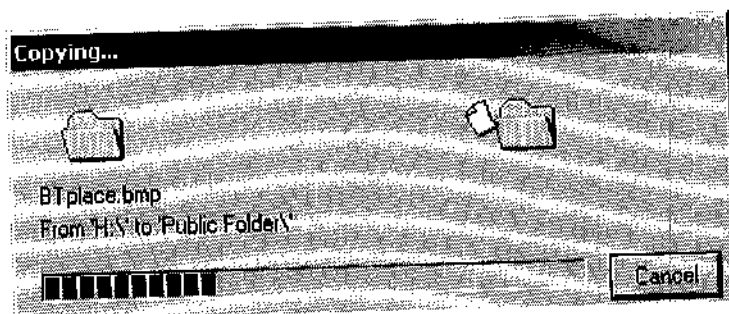
3. After searching is completed, locate the name of PC that you wish to transfer the file to and double click it to discover the Bluetooth services it has to offer (i.e. Bluetooth Serial Port, Dial-up Networking, File Transfer, Network Access, etc.).



4. Double click the "Public Folder" icon to open the Bluetooth shared folder on the other PC.

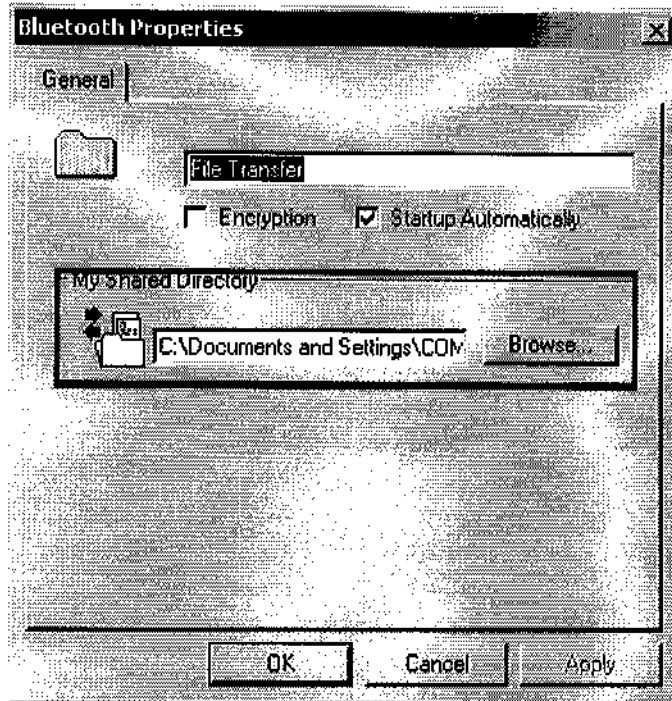
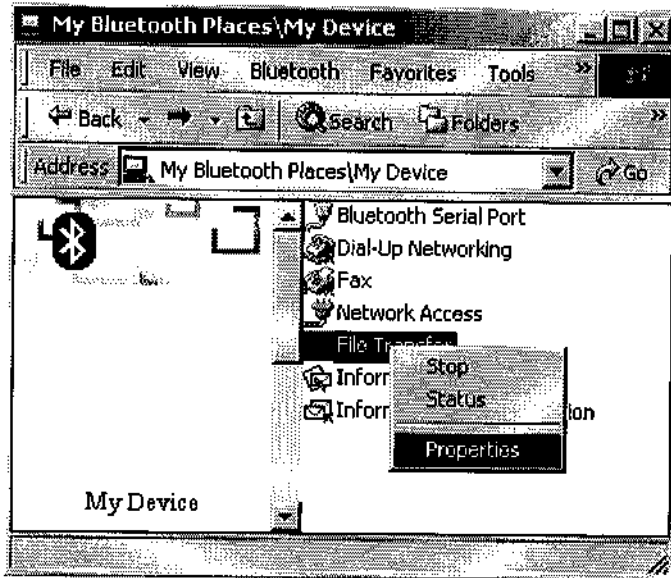
5. Locate the file you wish to transfer to that PC and drag it into the "Public Folder" window.

6. At this time, a window will pop up to indicate that a file transfer connection is being established, and then file transfer will begin.



Copied 173,892 bytes of 286,422 bytes.

7. The file will be opened once the transfer is completed, if the "Start Automatically" checkbox is selected.



4. Dial-up networking setting for Windows

The Dial-up Networking service permits a Bluetooth client to use a modem that is physically connected to a different Bluetooth device (the server). After the Bluetooth wireless connection is established the client can use the server's

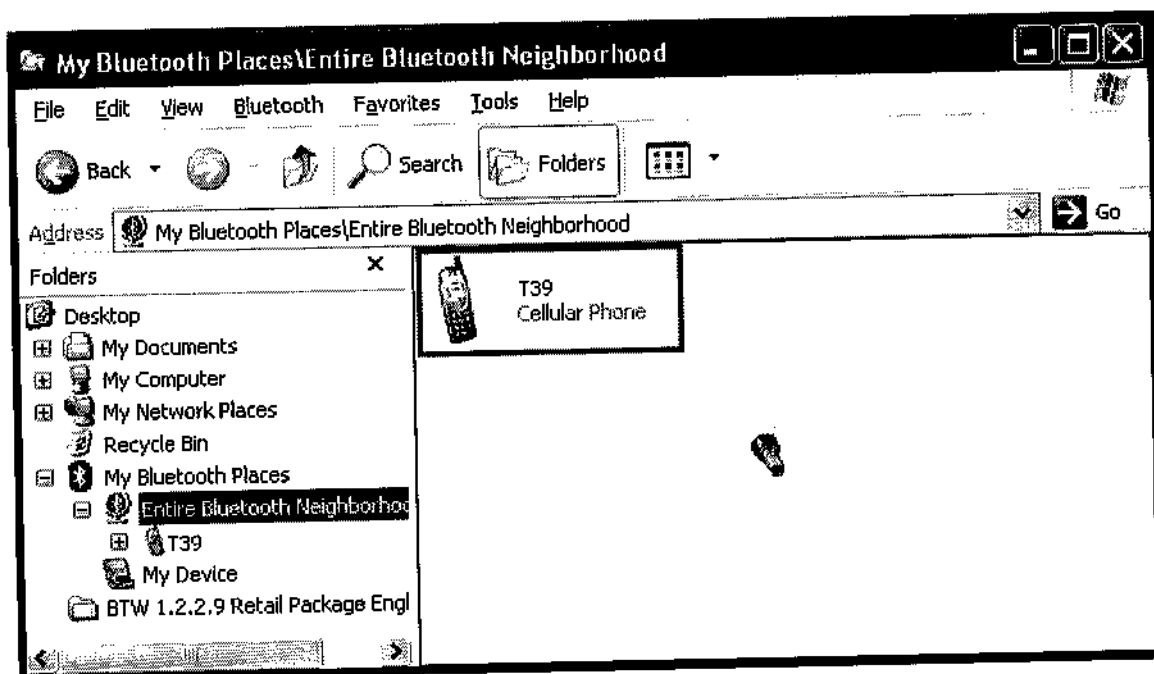
modem as if it were a local device on the client.

To establish a Dial-up Networking session.

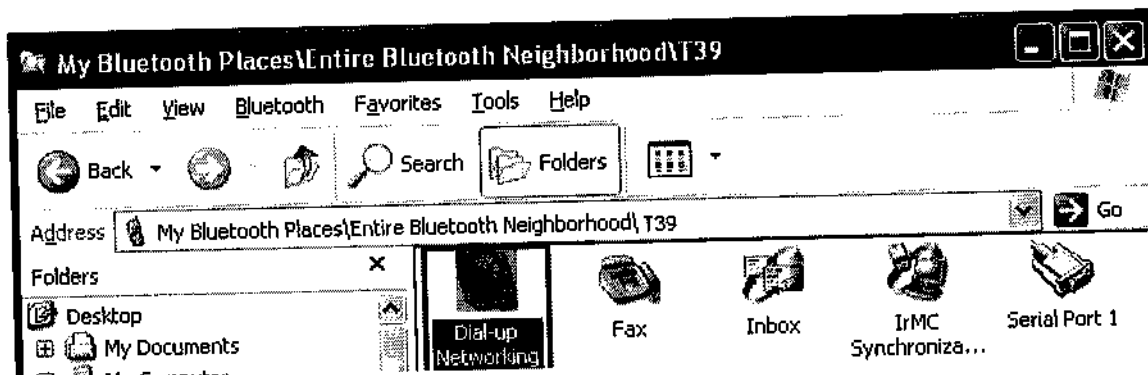
Dial-up networking setting for Windows

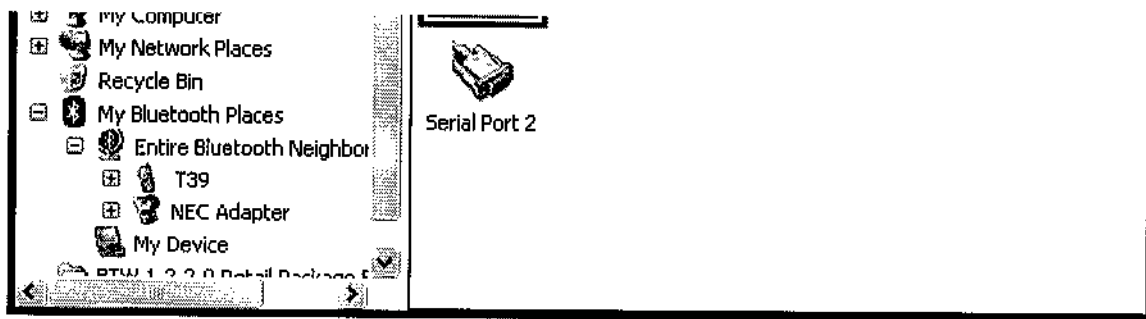
Connections are initiated from the client:

1. On the client, in the Folders pane of "My Bluetooth Places", select "Entire Bluetooth Neighborhood".
2. In the right pane of "Entire Bluetooth Neighborhood", right-click anywhere *except on a device name* and select Refresh from the pop-up menu.
3. In the Folders pane of "My Bluetooth Places", right-click the server that will provide the Dial-up Networking Service and select Discover Available Services from the pop-up menu to update the available services list. The available services will be displayed in the right pane of "My Bluetooth Places".



4. In the right pane of "My Bluetooth Places", double-click "Dial-up Networking".

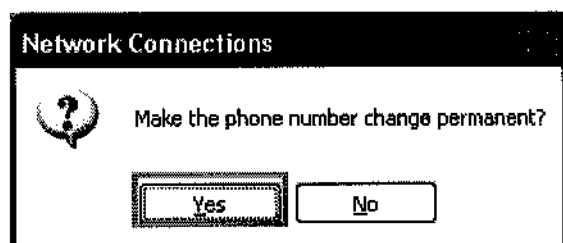
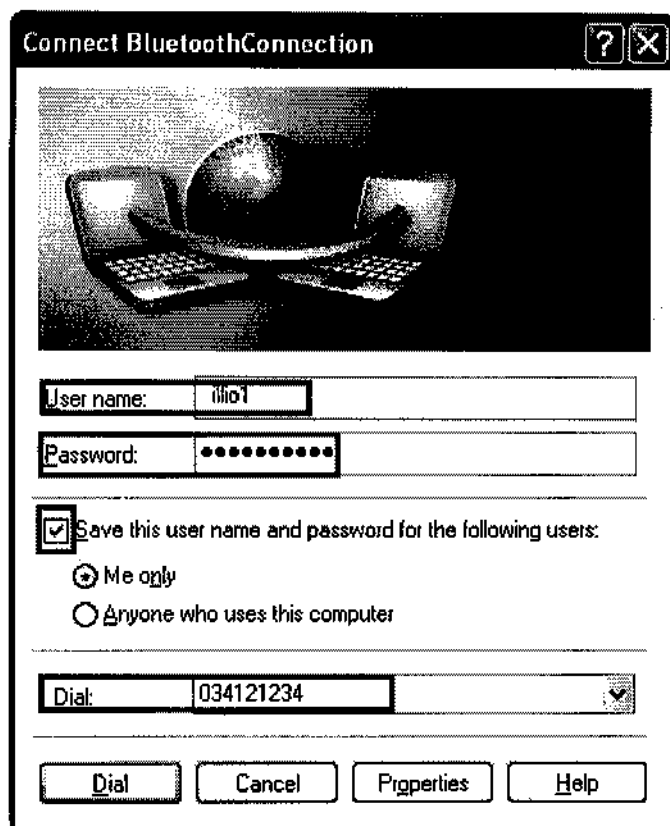




5. In the Connect To dialog box, type in your user name, password, and the phone number to be dialed, and then click the "Dial" button.

6. Select the "Save password" checkbox and the dialog box will not appear for subsequent connections to the same phone number. You can now open a web browser and connect to the Internet.

Note: When using the GPRS Dial up function, you do not have to type in the user name or password.





To close a Dial-up Networking connection

1. On the client, in the Folders pane of "My Bluetooth Places", select (highlight) the device that is providing the Dial-up Networking service.
2. In the right pane of "My Bluetooth Places", right-click "Dial-up Networking" and then select "Disconnect Dial-up Networking" from the pop-up menu.

5. FAX setting

The Fax service allows a Bluetooth client to wirelessly send a fax using a device that is physically attached to a Bluetooth server.

FAX setting for Windows

To send a Fax

Connections are initiated from the client:

1. On the client, in the Folders pane of "My Bluetooth Places", select "Entire Bluetooth Neighborhood".
2. In the right pane of "Entire Bluetooth Neighborhood", right-click anywhere except on a device name and select Refresh from the pop-up menu.
3. In the Folders pane of "My Bluetooth Places", right-click the server that will provide the Fax service and select "Discover Available Services" from the pop-up menu to update the available services list. The available services will be displayed in the right pane of "My Bluetooth Places".
4. In the right pane of "My Bluetooth Places", double-click Fax. After the Fax connection is established, open or create the document to be faxed and use the "Print or "Send to Fax Recipient" option available in most applications. The Fax connection closes automatically when the transmission is completed.

6. Information Exchange setting

The Information Exchange service provides a way to send and receive Microsoft Outlook items to and from another Bluetooth device, such as a Personal Digital Assistant or notebook computer.

The supported Outlook items are

* Business cards (*.vcf and *.vcd)

* Calendar entries (*.vcs)

* Notes (*.vnt)

* Messages (*.vmg)

There are three types of operations:

* Send—sends an object to another device.

* Receive—requests an object from another device.

* Exchange—sends a client object and receives a server object.

The default location of your business card and the location where received items are placed can be configured in the Bluetooth Configuration Panel.

To send, receive or exchange an object: on the client, in the Folders pane of "My Bluetooth Places", right-click the Inbox icon of the remote device and select an option from the pop-up menu.

Business cards are sent, received or exchanged without further intervention.

To send Calendar Items, Notes, and Messages, navigate to the folder that contains the item you want to send, select the item, and then click Open.

7. Information Synchronization setting

The Information Synchronization service is used to synchronize information (e.g., a Personal Information Manager database) between a Bluetooth client and a Bluetooth server. BTW supports synchronization with devices that support IrMC v1.1 and exchange the v2.1 vCard format.

The first time Information Synchronization is used with a new application it may take a few minutes to synchronize the database; the data from both devices

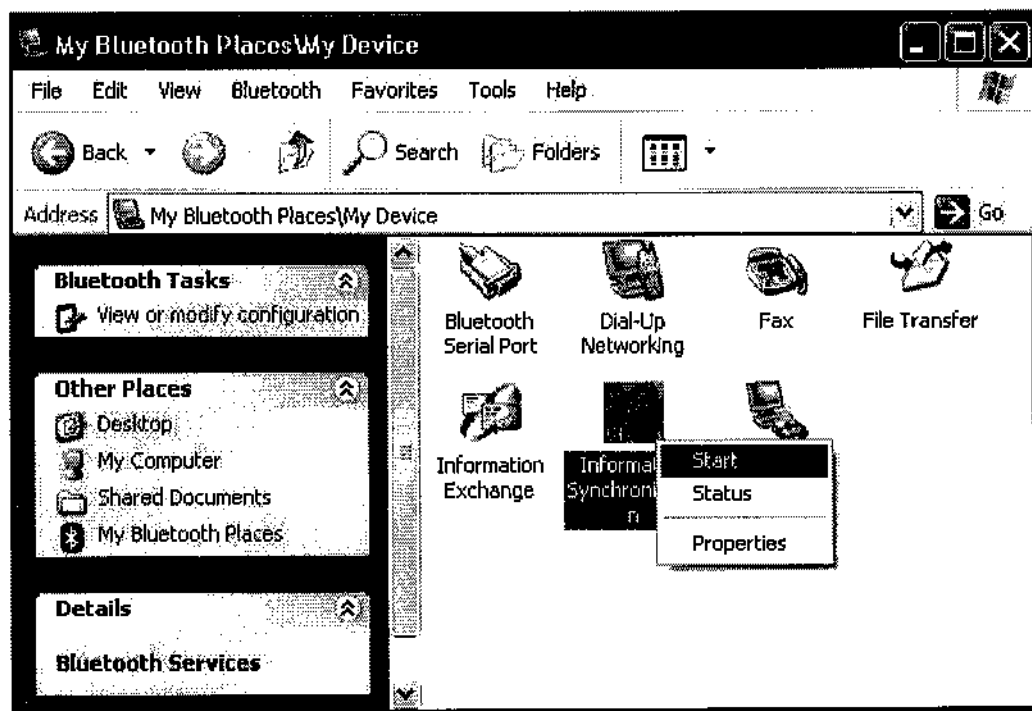
must be merged, duplicate entries deleted, and then the updated database copied back to both devices.

Subsequent uses of Information Synchronization, for the same application, are much faster—only the changes that have been made since the databases were last synchronized must be exchanged. Microsoft Outlook is the only Personal Information Manager supported in this release of BTW. Outlook permits duplicate entries, so all duplicates may not be exchanged in the synchronization process.

Only Outlook's default contacts folder is synchronized. Items in sub-folders are not synchronized. Items that are moved from the default folder to a sub-folder will appear to have been deleted the next synchronization takes place.

To use Information Synchronization

1. On the client, in the Folders pane of "My Bluetooth Places", select "Entire Bluetooth Neighborhood".
2. In the right pane of "Entire Bluetooth Neighborhood", right-click anywhere *except on a device name* and select Refresh from the pop-up menu.
3. In the Folders pane of "My Bluetooth Places", right-click the server you want to synchronize with and select "Discover Available Services" from the pop-up menu to update the available services list. The available services will be displayed in the right pane of "My Bluetooth Places".
4. In the right pane of "My Bluetooth Places", double-click "Information Synchronization" to start link.

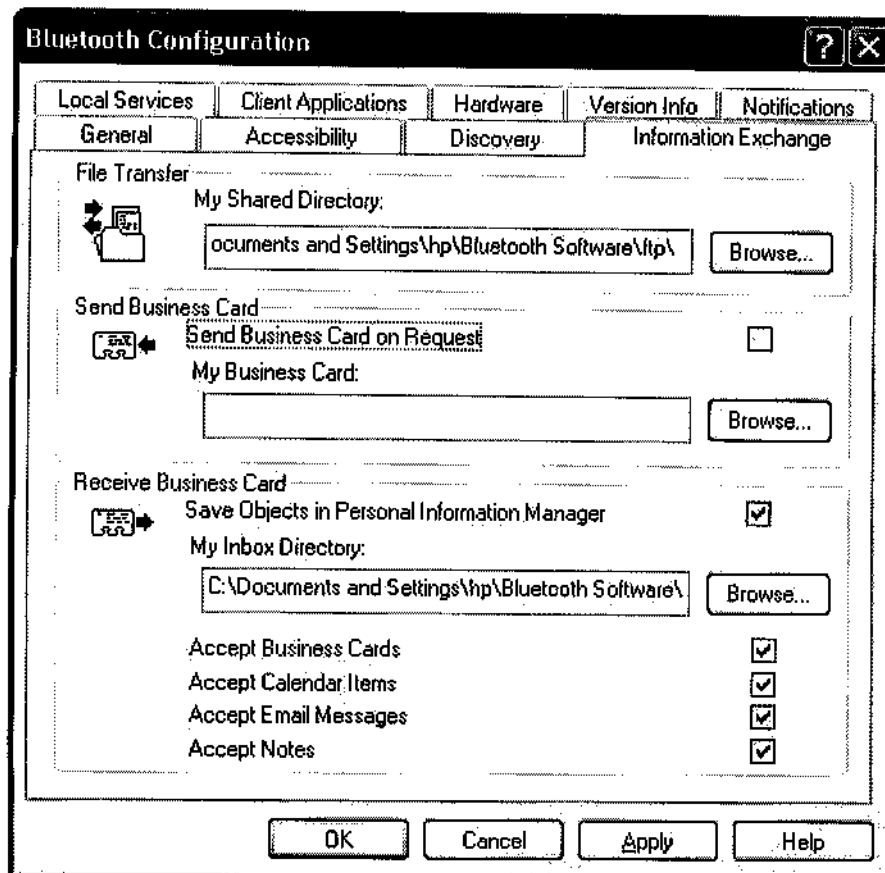
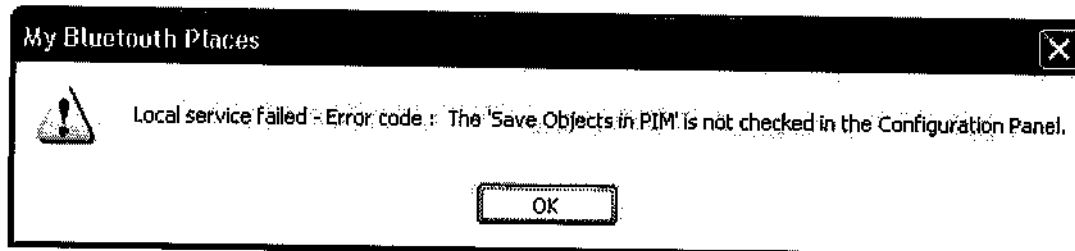


A dialog box displays synchronization progress and, when the process is

complete, indicates that synchronization has successfully completed.

The connection closes automatically when synchronization is completed.

Note: If an error message similar to the one below appears when you try to exchange business cards, please make sure a PIM is installed, e.g. Microsoft Outlook Exchange, and to select the "Save Objects in Personal Information Manager" option in "Bluetooth Configuration".



8. Serial port setting

The Bluetooth Serial Port service allows two Bluetooth devices to establish a wireless connection through virtual communications ports and then use that connection as if it were a hardwired serial cable between the devices.

To establish a Bluetooth serial port connection:

Connections are initiated from the client:

1. On the client, in the Folders pane of "My Bluetooth Places", select "Entire Bluetooth Neighborhood".
2. In the right pane of "Entire Bluetooth Neighborhood", right-click anywhere *except on a device name* and select "Refresh" from the pop-up menu.
3. In the Folders pane of "My Bluetooth Places", right-click the server you want to establish a connection with and select "Discover Available Services" from the popup menu to update the available services list. The available services will be displayed in the right pane of "My Bluetooth Places".
4. In the right pane of "My Bluetooth Places", double-click "Bluetooth Serial Port". A dialog box appears that contains the communications port number assigned to this connection by the client. The application that will use this connection must be configured to send data to this port.

Depending on the security configuration, the dialog box that provides communications port information may not appear until after Authentication and Authorization have been accomplished.

The application on the server must be configured to use the correct communications port.

To determine the communications port being used by the service:

- * On the server, in the Folders pane of "My Bluetooth Places", right-click "My Device" and select "Properties" from the pop-up menu
- * In the "Bluetooth Configuration Panel", select the "Local Services" tab.
- * Double-click the "Bluetooth Serial Port" service to display its "Service Properties" dialog box. The "Service Properties" dialog box shows the communications port the connection is using.

To close a Bluetooth serial port connection

Connections are normally closed from the client:

- * On the client, in the Folders pane of "My Bluetooth Places", select (highlight) the device that is providing the "Bluetooth Serial Port" service.
- * In the right pane of "My Bluetooth Places", right-click "Bluetooth Serial Port" and then select "Disconnect Bluetooth Serial Port" from the pop-up menu. Though not recommended, connections can also be closed from the server:
- * On the server, in the Folders pane of "My Bluetooth Places", select (highlight) "My Device".

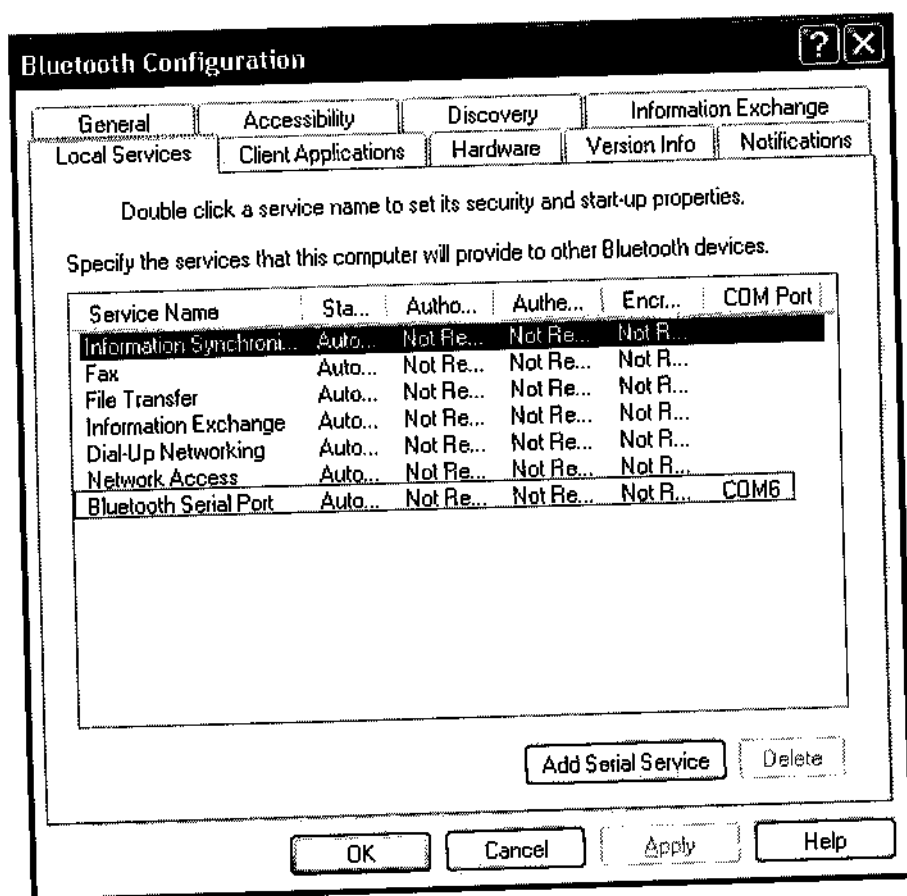
* In the right pane of "My Bluetooth Places", right-click "Bluetooth Serial Port" and then select Stop to close the service. The service must be re-started before it will be available to remote devices (right-click Bluetooth Serial Port and select Start from the pop-up menu).

9. ActiveSync setting

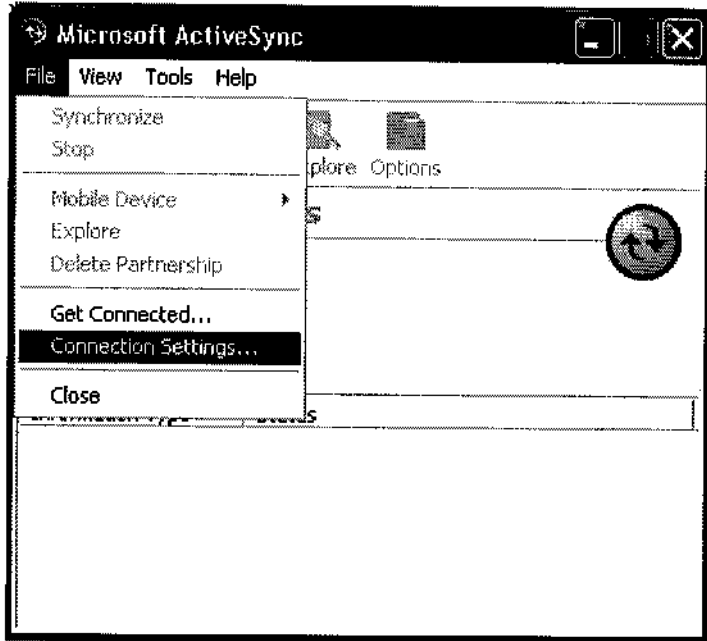
ActiveSync setting for Windows

1. Right-click on *Bluetooth Configuration* icon from the toolbar in the desktop window. Select *Setup* and then open *Configuration* window.

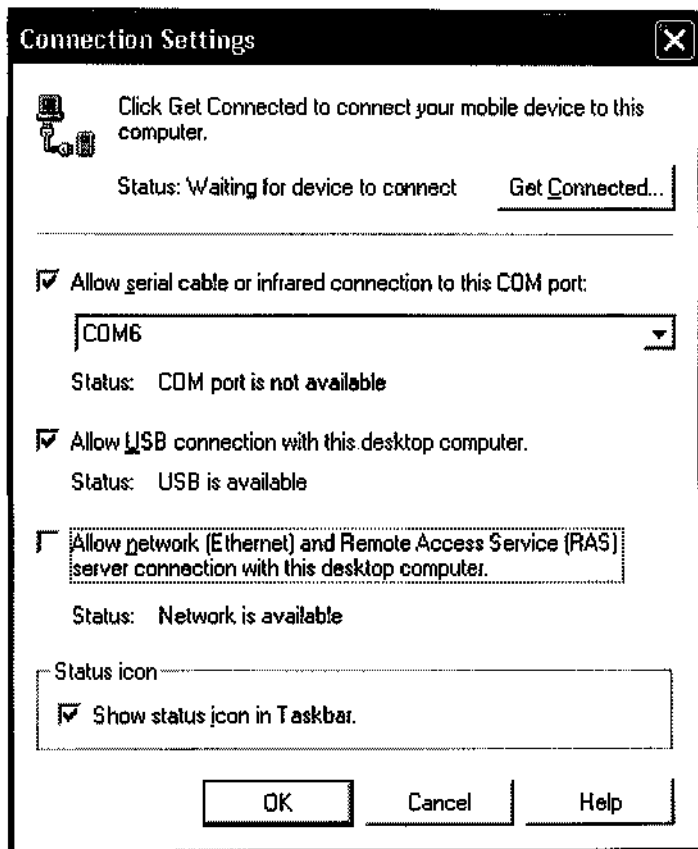
2. Select *Local Service* tab from the Bluetooth Configuration window. In the *Service Properties* window, please learn by heart the current COM port this computer uses, for example: COM 6, in order to identify this value with the configuration of Microsoft ActiveSync later.



3. In the *Microsoft ActiveSync* window, select *Connection Settings...* from drop-down list of File menu.



4. Choose the same COM port. (in this case, it is COM 6 that Bluetooth Serial port uses shown in the Step 2.)

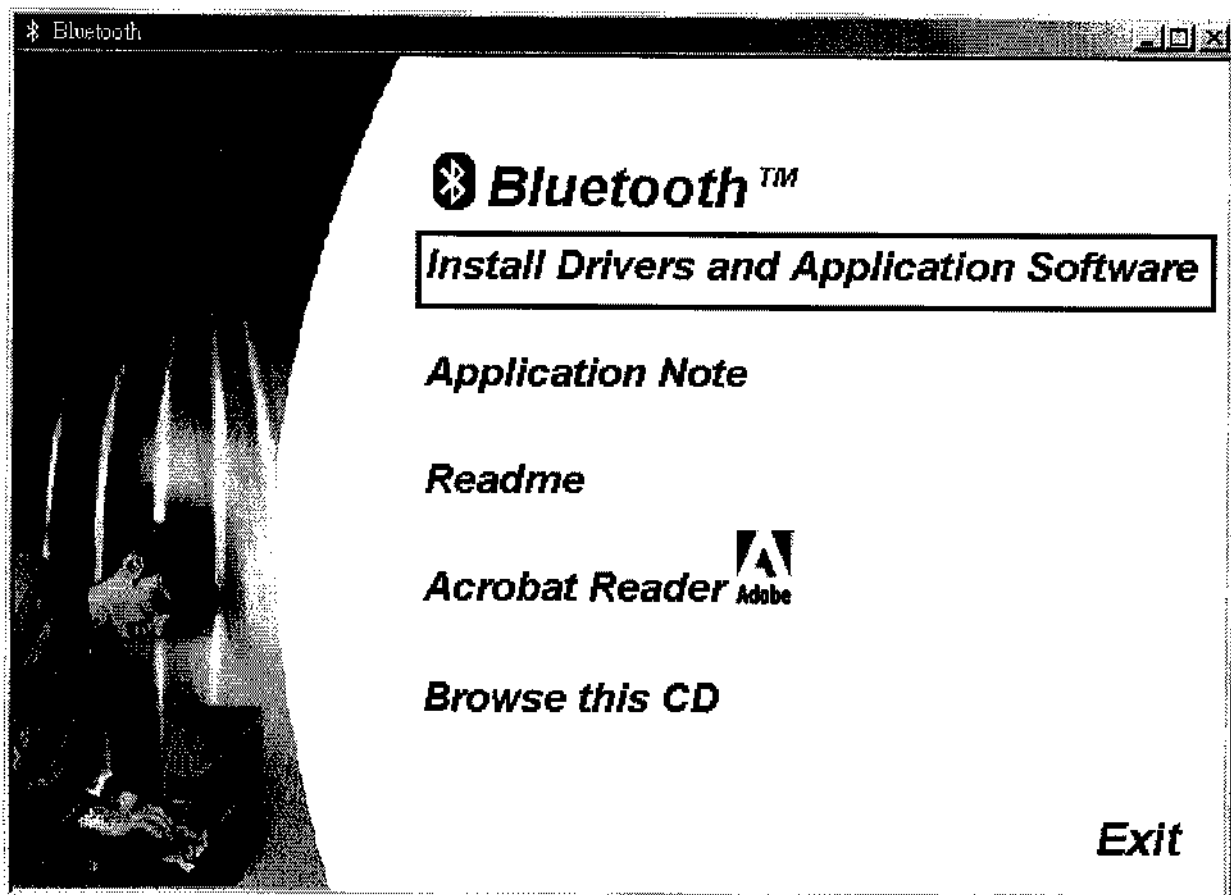


5. Please refer to the PDA ActiveSync Setting to complete the Bluetooth ActiveSync Configuration Process

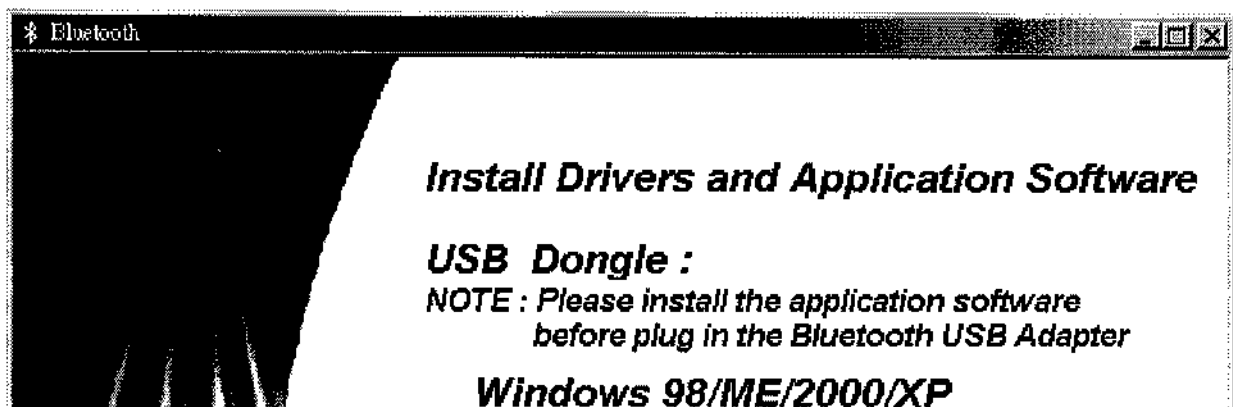
Installing Bluetooth software for WinCE

1. Make sure your PDA is connected with your PC, CF Bluetooth card securely sits in the PDA'S CF slot, and the installation disk in your PC's CD-ROM, the Setup program should launch automatically.

If Setup does not launch automatically, use Windows Explorer to navigate to the appropriate CD-ROM drive and double click on "bsetup".



2. Select "WinCE 3.0 & PocketPC2002" at Setup dialog box.





CF Bluetooth :

**NOTE : Please insert and install CF Bluetooth Driver
before installing Bluetooth Software**

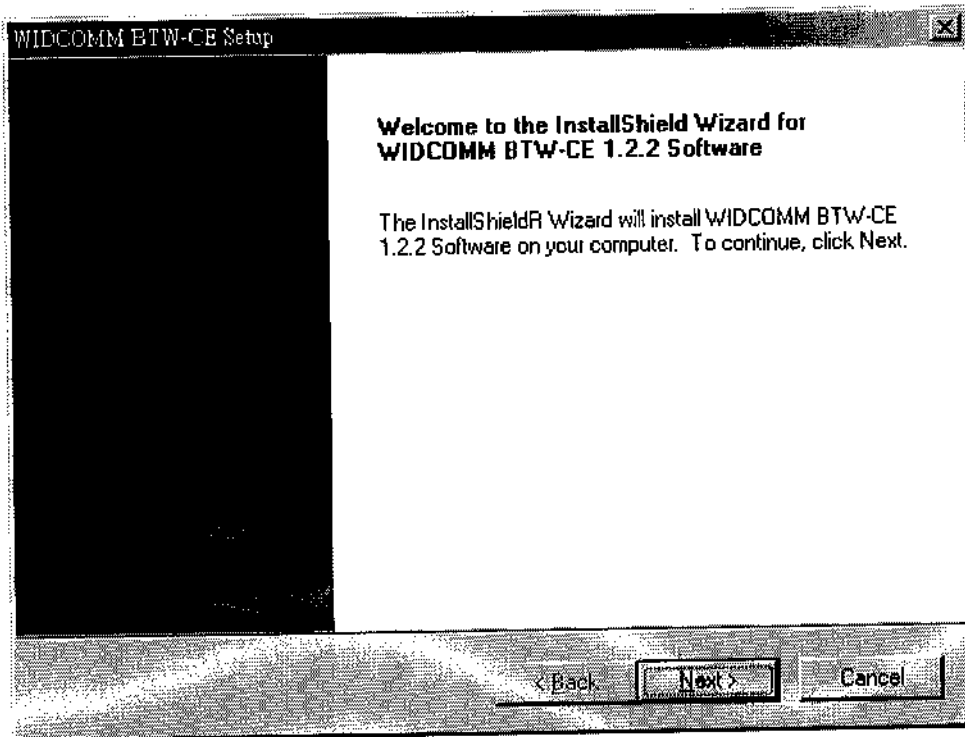
Windows 98/ME/2000/XP

WinCE 3.0 & PocketPC 2002

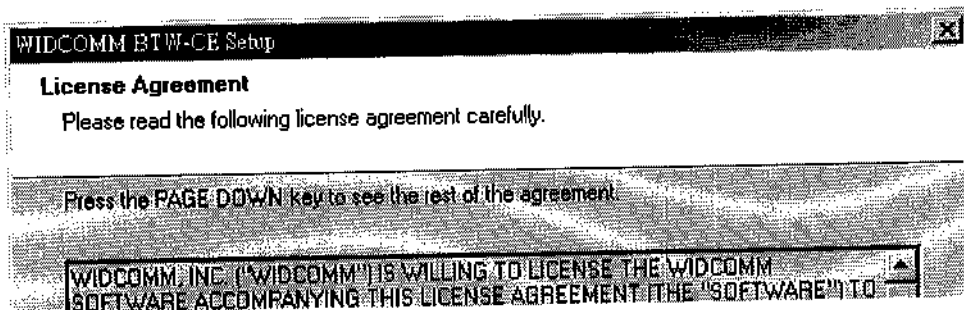
Back Exit

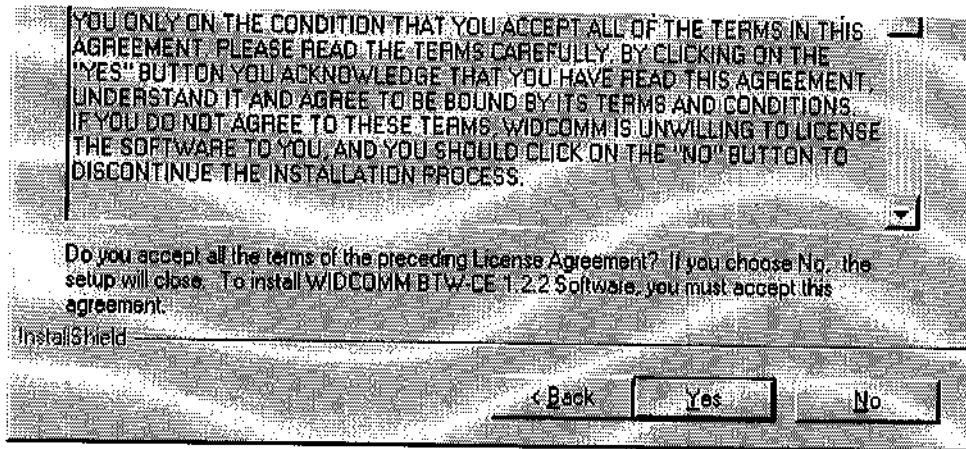
3. Follow the instructions on the screen:

a) On the *Welcome* screen, click the Next button.

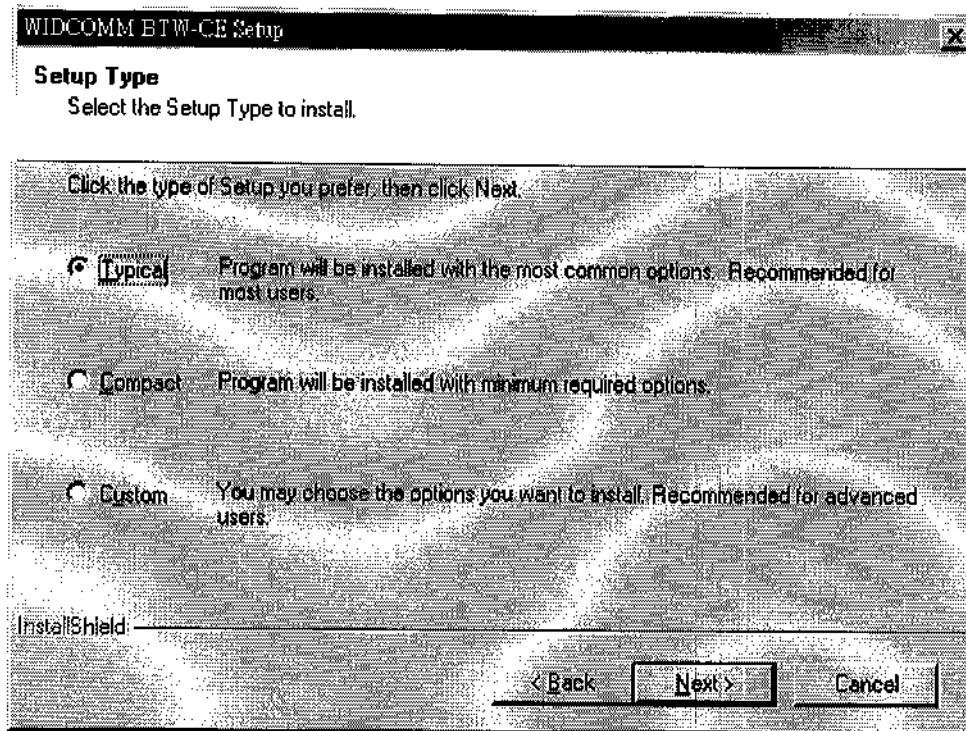


b) When the *License Agreement* screen is displayed, read the License Agreement, then click "Yes" to go to the next step.

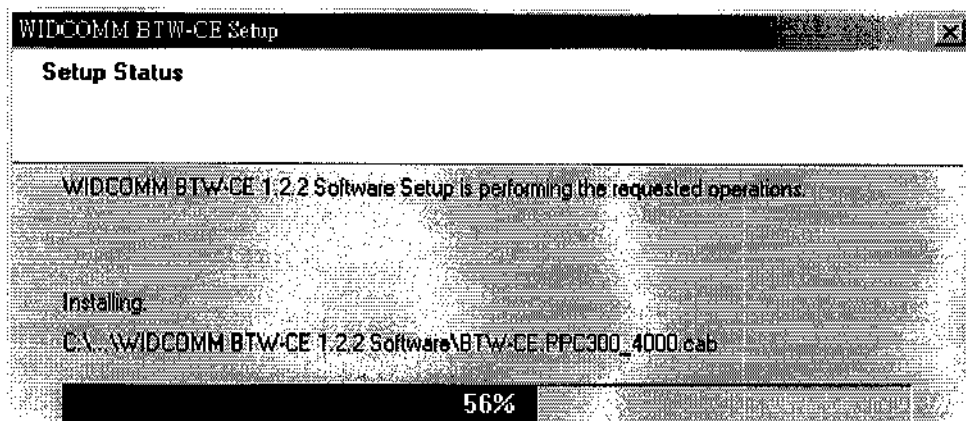


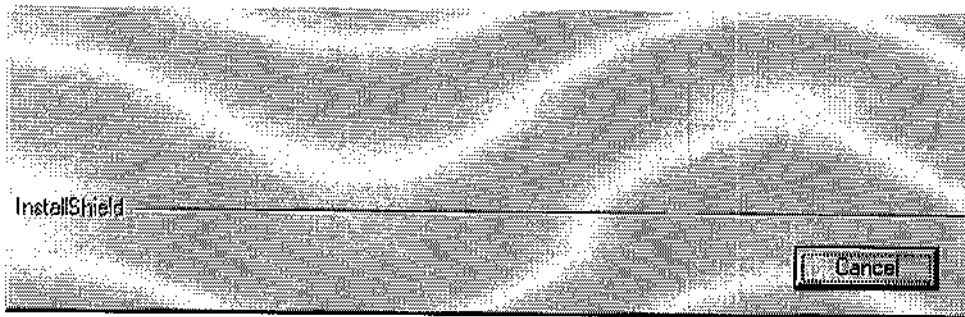


c) On the *Setup Type* screen, click "Typical" and click "Next" to accept the default setting.

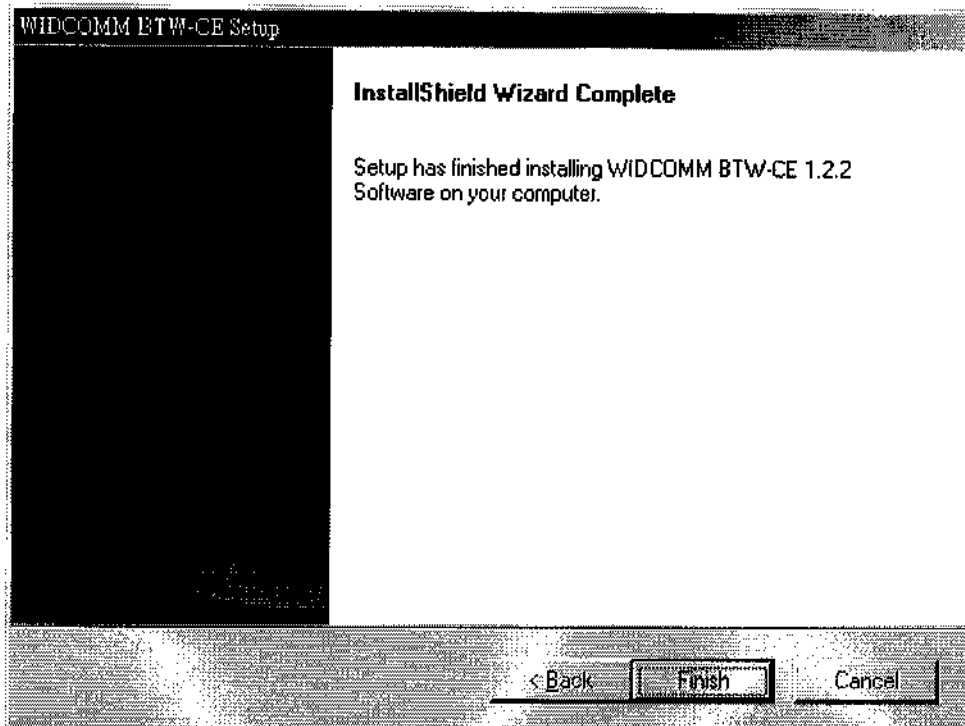


d) Then system will start installing all the necessary setup files.





e) When the installation is complete, click the "Finish" button on the *Completed* screen.



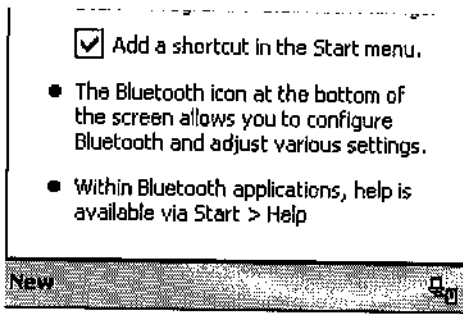
f) On the handheld (PDA) device:

Tap "Yes" to accept the default directory and install the software.

g) A Welcome screen will be shown with basic instructions to use BTW-CE .

h) Check off "Add a shortcut in the Start menu" in order to have access to the "Bluetooth Manager" from the Start menu





i) Perform a "soft reset to the handheld computer. Refer to your device's documentation for the exact procedure.

NOTE:

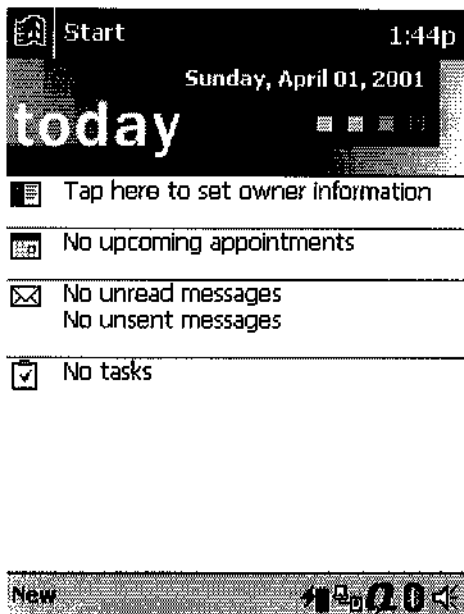
A soft reset leaves installed applications and stored data intact, and simply restarts the device.

A hard reset deletes ALL downloaded applications on the handheld. See the handheld computer's documentation for additional information.

Bluetooth Control Panel: Configuring BTW-CE

BTW-CE provides a Control Panel to adjust Bluetooth settings.

To access the Control Panel, tap the Bluetooth icon in the lower-right corner of the Today screen.



BTW-CE can have multiple saved configurations. Individual configuration sets are saved in profiles, which can be quickly loaded to meet the appropriate situation.

The Control Panel has seven tabs. All tabs are not visible on the screen at the same time; use the arrows to the right of the tab names to scroll back-and-forth and expose the different tabs.

There are seven tabs in the control panel:

* General

User profile selection

Bluetooth status (ON/OFF) indicator

Hardware power control (ON/OFF)

Shortcut to the Bluetooth Manager.

* Accessibility

Set the device name

The card's Bluetooth Device Address (Bd_Addr)

Determine which remote devices are allowed to connect

Determine whether this PocketPC can be seen by other remote devices.

* Service tabs—BTW-CE can provide four services. They are:

File Transfer—Sets the highest-level of directory on this PocketPC that the remote devices will have access to.

Information Exchange—Sets the default business card (Pocket Outlook contact entry)

Serial Port—Bluetooth serial port information

Dial-up Networking—configure the COM port, baud rate and flow control.

* About—there are no configurable options on this tab.

Software version information

Copyright information

Website and Technical Support links

There are three options on this screen:

* **Current Profile:** to change the active profile, tap the down-arrow in the "Current profile:" field and select the new profile from the drop-down list. The current profile will be saved, and the settings from the selected profile will be loaded. To add, delete, or rename a profile, tap.

* **Bluetooth Status:**

Integrated Bluetooth hardware.

External Bluetooth hardware (Compact Flash or PC expansion card)

* **Bluetooth Manager:**

Tapping on this shortcut starts the Bluetooth Manager.

When Bluetooth is OFF, no connections, incoming or outgoing, are possible.

When Bluetooth is ON, Bluetooth is always "Up" and battery drain is significantly greater than when Bluetooth is disabled. *To conserve battery power, do not enable Bluetooth when it is not being used.*



Bluetooth: General

Current profile



Bluetooth status

Bluetooth is ON

Remove the Bluetooth card to turn it off.

Use the **Bluetooth Manager** to set connections.



Accessibility page displays device information. You can modify your device name in here. This name will show on other Bluetooth devices.

All information on this tab is saved with the active profile, including the device name.

The options on the Accessibility tab are:

* **Device Identification:**

Name--the name of this device, as displayed to remote devices when the associated profile is active. To change the device name associated with this profile, highlight the name and enter the new name.

Address--the Bluetooth Device Address (Bd_Addr) of this device. This information is permanently associated with the Bluetooth hardware during the manufacturing process and cannot be changed.

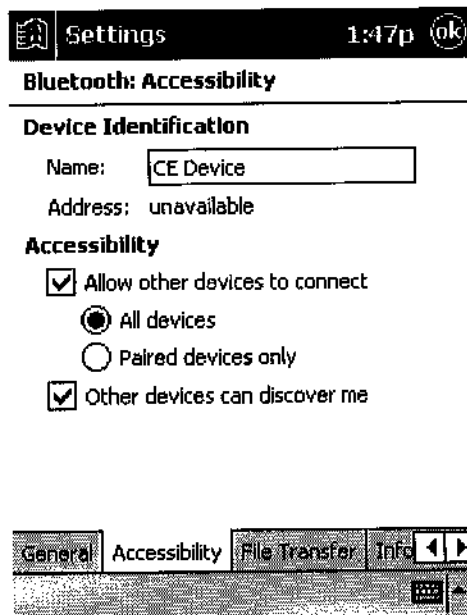
* Accessibility:

Allow other devices to connect, when this option is enabled, other devices are permitted to connect to this device. Two mutually exclusive sub-options provide additional refinement. They are:

*All devices--select this option to allow all devices to connect.

*Paired devices only--select this option to allow only devices that have a paired relationship.

Other devices can discover me, when this option is enabled, other Bluetooth devices can see and report this device. Even though remote devices cannot discover this device unless this option is checked, if a remote device has this device's Bluetooth Device Address, that device may still be able to connect to this device.

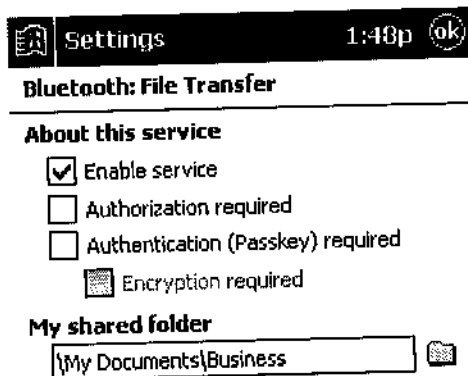


Click File Transfer page is displayed your CE device shared folder information, you can modify your CE device shared folder here.

The options on this tab only affect incoming File Transfer connections.

There is one additional configurable item: "My shared folder" which allows you to specify the default File Transfer directory, the highest level directory on this PocketPC that remote devices have access to.

To change the default File Transfer directory, tap folder navigate to the desired directory, and then tap the "OK" bottom.



Information Exchange page displays your business card. You can set your business card in here.

The Common Options on this tab only affect *incoming Information Exchange connections*.

There is one additional configurable item: "My business card (vCard) .

The "My business card" information comes from a selected record in the Contacts list of Pocket Outlook. Information from the selected record is sent to remote devices on request. It is also the contact information that is sent when you select "Send your business card to one or more recipients" while using Business Card Exchange.

The default selection is "none (no information).

To select a vCard, tap , choose a contact from the list, and then tap OK.

To discontinue sending contact information when it is requested, tap , choose "(none)" from the list, and then tap OK.

If you reach the contacts list by mistake, tap OK to return to the previous screen.

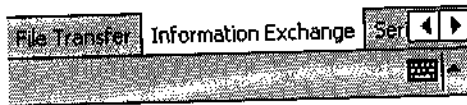
Bluetooth: Information Exchange

About this service

- Enable service
- Authorization required
- Authentication (Passkey) required
- Encryption required

My business card (vCard) [v]

(None)



Serial Port page displays your Serial Port setting.

The configurable options on this tab only affect *incoming Serial Port connections*.

All of the Common Options (see Section 2.3.1) are available.

There are two additional, non-configurable items:

* Inbound COM Port: the local communications port that is used for inbound serial connections.

* Outbound COM Port: the local communications port that is used for outbound serial connections.

The Inbound and Outbound COM ports are permanently assigned and cannot be changed.

Bluetooth: Serial Port

About this service

- Enable service
- Authorization required
- Authentication (Passkey) required
- Encryption required

Ports

Inbound COM Port:

5

Outbound COM Port:

5



Dial-Up Networking page displays your Dial-Up Networking setting. You can change your COM port, baud rate and Flow control here.

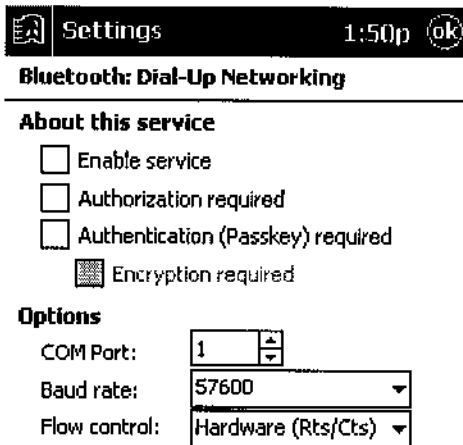
There are three additional items:

- * COM Port: select the communications port to be used.
- * Baud rate: tap the down-arrow and select a baud rate from the drop-down list. The options range from 1,200 to 115,200 baud, in nine steps.
- * Flow control: tap the down-arrow and select the type of flow control to be used from the drop-down list.

The options are:

Off

Hardware (Rts/Cts).



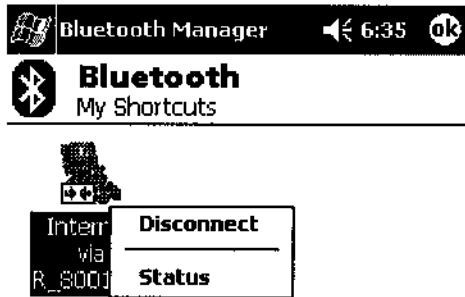
Connection Open—Context Sensitive Menu Options

From the My Connections screen, tap and hold a connection icon that is associated with an OPEN connection to access the context sensitive menu.

The Menu options are:

- * Disconnect—close the open connection

* Status—select this option to display the Connection Status screen (double-tap default).



Connection Status Screen

This screen displays:

The connection name

The remote device's name

The connection status: Connected/Not Connected

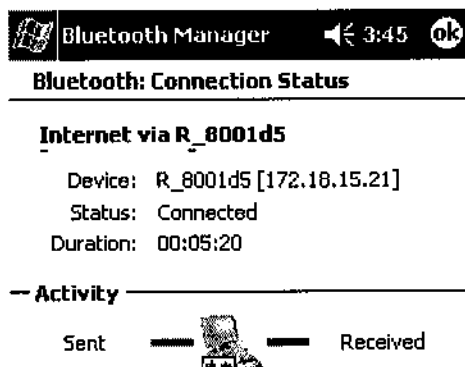
The length of time the connection has been active

Activity information:

The amount of data sent

The amount of data received.

A graphic signal strength indicator.

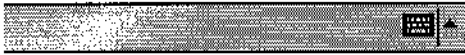


239 KB



32.3 KB

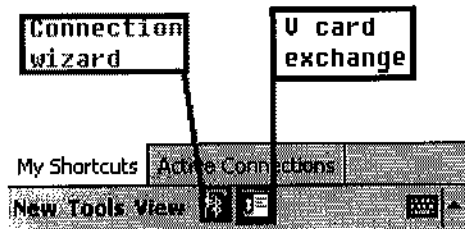
— Signal strength —



Network sharing setting for WinCE

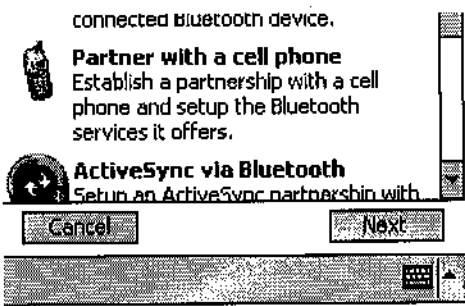
Explore Bluetooth device in your range

1. You can check all the available Bluetooth devices by using "Connection Wizard". To start "Connection wizard", please tap the "star B" icon at bottom bar of the "Bluetooth Manager".

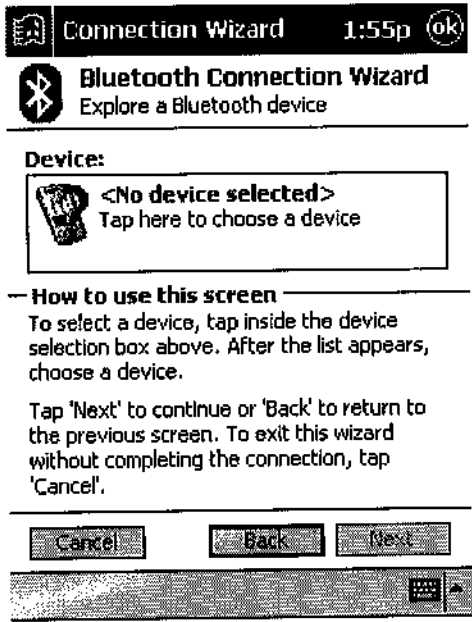


2. There are many connection types to choose from in the "Connection Wizard". The first connection type explores all available Bluetooth devices within the Bluetooth connectivity range. Other connection types explores specific services in the Bluetooth device, e.g. Dial-Up, Information Synchronization (ActiveSync), File transfer.. etc. Please click "Explore a Bluetooth device" then click "Next".



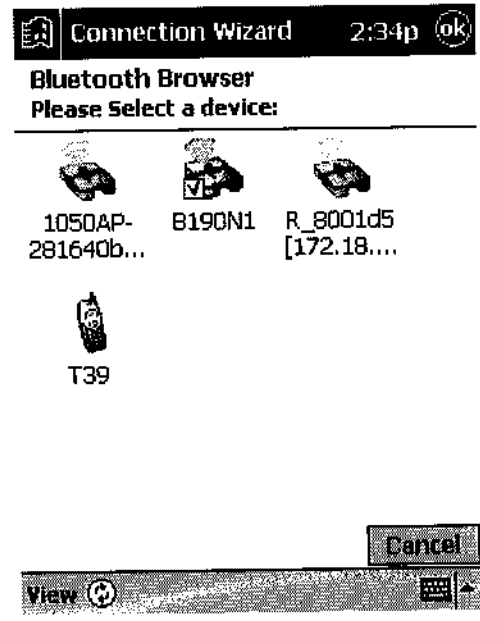


3. Follow the "Connection Wizard", tap the device selection box in the middle of the screen, it will jump to the next page.

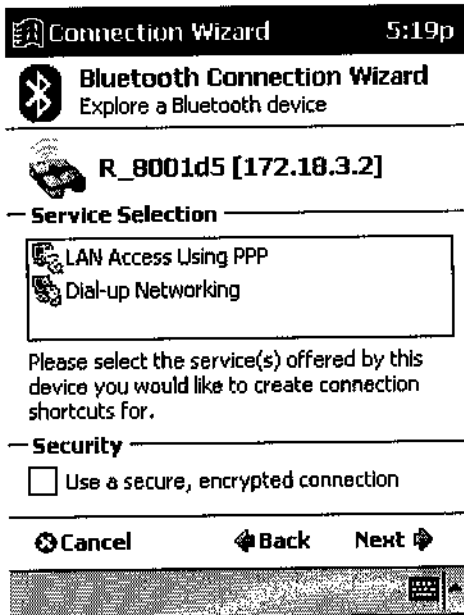


4. All the Bluetooth enabled devices within the discoverable range will be shown.

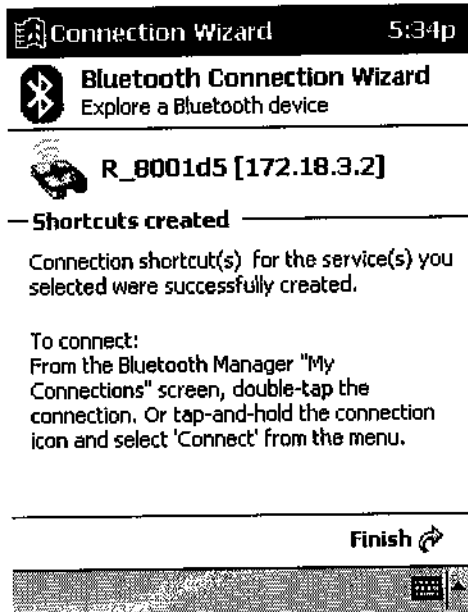
In this example we will select the access point icon "R_8001d5 [172.18...".



5. All the available services for this device are shown as below. Select the service that you'd like to use and create a connection shortcut for this device, then tap "Next" to the next step.



8. Tap "Finish" to create a shortcut to the Access Point on the Bluetooth manager.



9. If you want to use this service, double-tap the icon, or tap-and-hold the connection icon and select "Connect" from the menu. Then you can access the Internet.

Bluetooth

My Shortcuts



R_8001d5 T39: Dial-
[172.18.... up
LAN Acc... Networki...



Note: Consult the MIS personnel in your company for proxy setting if necessary.

For setting up the Proxy to surf the Internet via a Bluetooth Access Point:

1. Click on "Start" button, click "Settings", and "Connections" tab. Click on the "Connections" icon.
2. Change the "My network card connects to:" drop-down list to "Work", change the "When needed, automatically connect to Work using these settings:" drop-down list to "Work Settings", and click "Modify".

Connections

When needed, automatically connect to The Internet using these settings:
Internet Settings
Modify... Connect

When needed, automatically connect to Work using these settings:
Work Settings
Modify... Connect

My network card connects to:
Work

Connections Dialing Locations

3. Click on the "Proxy Settings" tab, and select both checkboxes, then enter the Proxy IP address obtained from your MIS personnel.

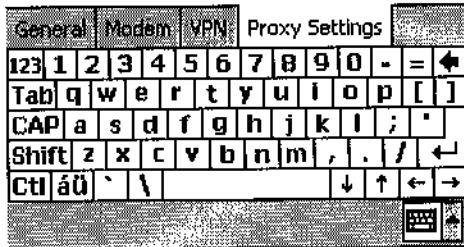
Work Settings

- This network connects to the Internet
 - This network uses a proxy server to connect to the Internet

Proxy server:

172.18.0.11

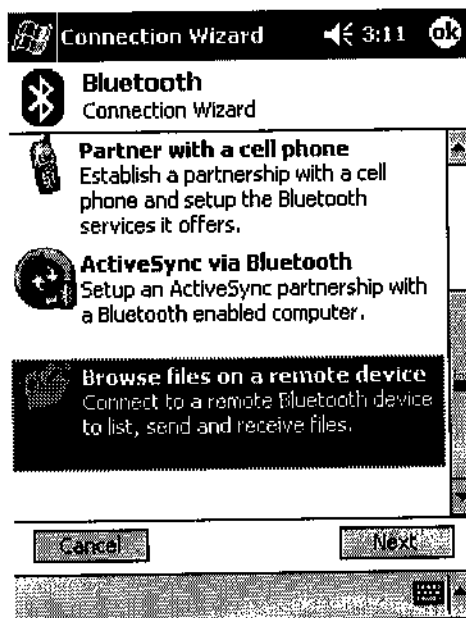
Advanced



File transfer setting for WinCE

File transfer service lets you transfer pictures, documents or music files to other Bluetooth devices. Starting file transfer by using "Connection wizard" from Bluetooth manager.

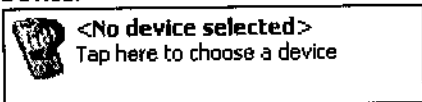
1. At "Connection wizard" , tap "Browse files on a remote device", then tap "Next".



2. Follow the instructions on the screen to the next step.

Bluetooth Connection Wizard
Browse files on a remote device

Device:



How to use this screen

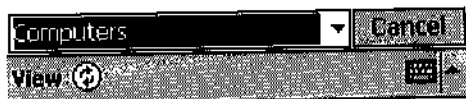
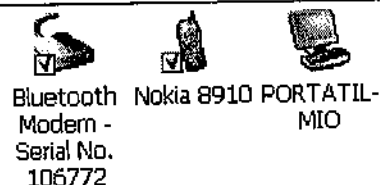
Tap the selection box above and choose a computer or handheld you would like to exchange files with.

Tap 'Next' to continue or 'Back' to return to the previous screen. To exit without completing the connection, tap 'Cancel'.



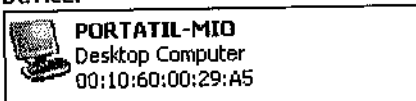
3. Then select a device, that you want to transfer the file(s) to.

Bluetooth Browser
Please Select a device:



Bluetooth Connection Wizard
Browse files on a remote device

Device:



How to use this screen

Tap the selection box above and choose a computer or handheld you would like to exchange files with.

Tap 'Next' to continue or 'Back' to return to the previous screen. To exit without completing the connection, tap 'Cancel'.



4. Follow the instructions to complete the connection setting, and now you can transfer files between the two devices.

Bluetooth Connection Wizard
Browse files on a remote device



Security Settings

Move the slider to set the security level for connections with this remote device.



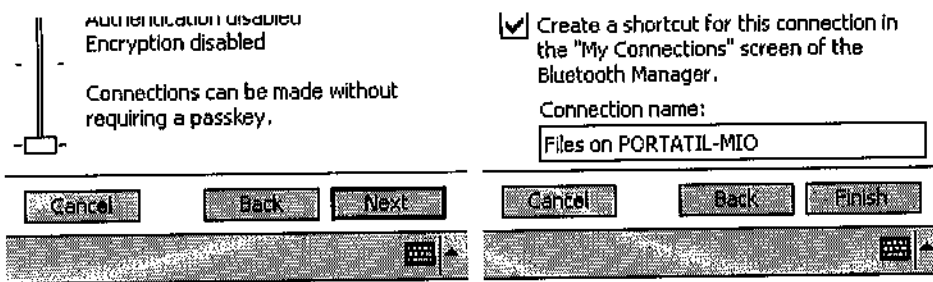
Bluetooth Connection Wizard
Browse files on a remote device



Ready to connect

You are now ready to connect to the selected device and start sending and receiving files! Tap 'Finish' to initiate the connection.

Shortcut creation



Change the Remote Device Folder

To move down in the directory structure of the remote device, tap the new folder in the main portion of the Bluetooth File Explorer window.

To move up in the directory structure of the remote device, tap the down-arrow to the right of the currently selected folder and select the new folder from the drop-down list.

File Menu

All of the following instructions in the subsections assume that there is an open File Transfer connection with a remote device.

Send a File to the Remote Device

To send a file to the remote device, from the File menu, tap Send a File... to display the Open screen.

The options on the Open screen are:

- * Folder—tap the down-arrow and select the folder that contains the file to be sent.
- * Type—the only option is “All Files (*. *)”
- * A list of files in the selected folder; tap the file to be sent
- * Cancel button—aborts the Send a File... operation.

The selected file is sent automatically when it is tapped, without further intervention, and the Bluetooth File Explorer main screen reappears.

Create a Folder on the Remote Device

To create a folder on the remote device, navigate to the folder in which the new folder will be placed, and then, from the File menu, tap Create a Folder. Enter a name for the new folder while the default name (New Folder) is highlighted.

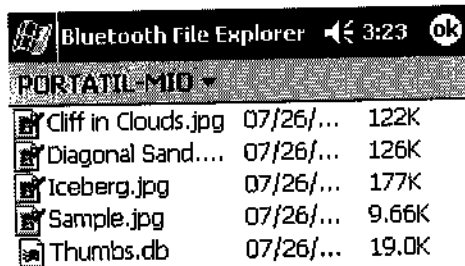
Get a File From the Remote Device

To get a file from the remote device:

1. Navigate to the folder on the remote device that contains the file
2. Tap the desired file to highlight it
3. From the File menu, tap Get.

The file is copied to the local folder listed in the Local Folder field near the top of the screen.

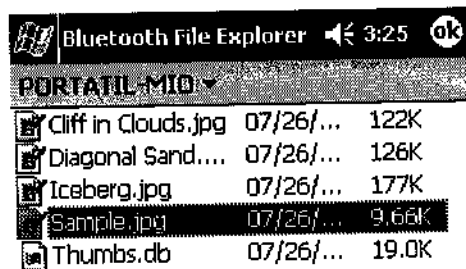
This operation can also be performed using the tap-and-hold technique: tap-and-hold the desired file and select Get from the pop-up menu.



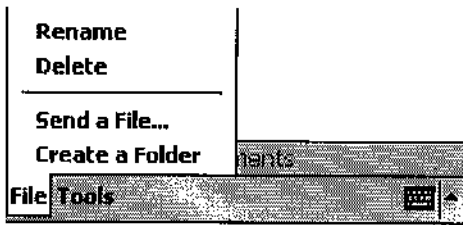
Delete a File on the Remote Device

To delete a file on the remote device: tap the file to be deleted to highlight it, then, from the File menu, tap delete. Tap OK in the confirmation dialog box.

This operation can also be performed using the tap-and-hold technique: tap-and-hold the desired file and select Delete from the pop-up menu. Tap OK in the confirmation dialog box.



Get



Dial-up networking setting for WinCE

Dial-up Networking allows you to connect to a remote computer that is connected to a phone line. Once connected, you can browse the Internet, check your email, etc.

The remote Bluetooth device that will provide the Dial-up Networking service must have access to a telephone system (either a physical or cellular connection).

Devices that might provide the Dial-up Networking service include:

- * Bluetooth-enabled cellular telephones
- * Bluetooth-enabled desktop computers that are attached to a telephone system
- * Bluetooth modems.

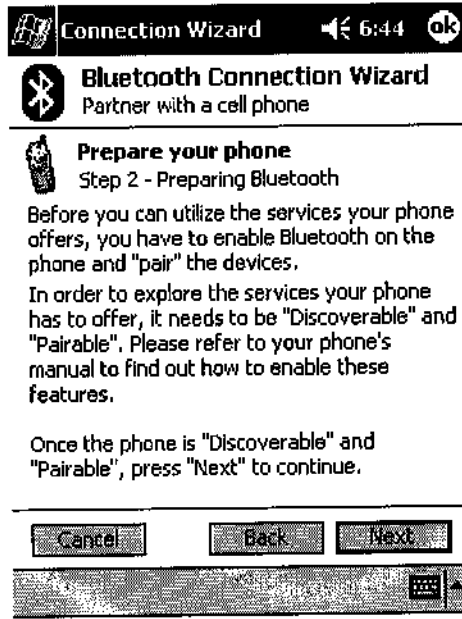
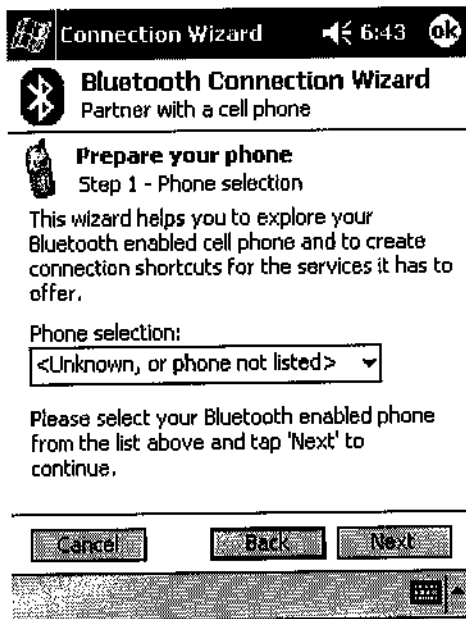
The remote computer to which you are connecting must also be attached to the phone system and capable of answering a call.

1. To begin dial-up networking setup for using a cell phone, please tap "Partner with a cell phone" from Bluetooth connection wizard, and click "Next".

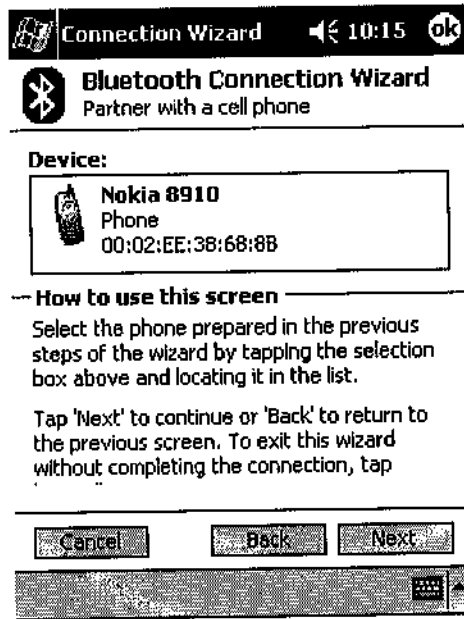
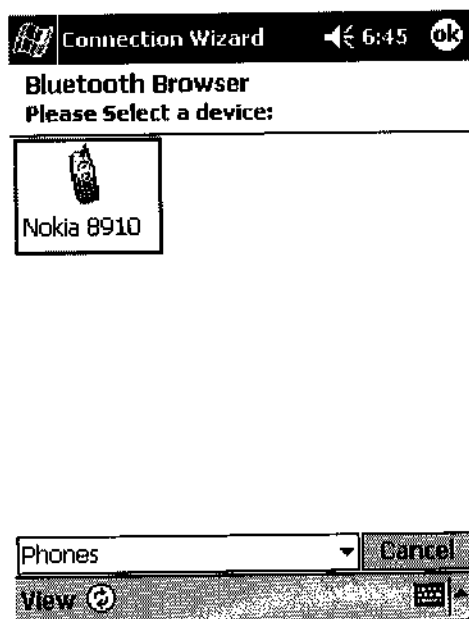
NOTE: For some mobile phones, e.g. Ericsson, we recommend you use the "Explore a Bluetooth device" option rather than the "Partner with a cell phone" option when pairing.



2. And prepare your cell phone in Bluetooth function enable mode, (To enable your cell phone's Bluetooth function, please refer to the user's guide of your cell phone) and tap "Next" to continue.



3. After searching, the Bluetooth manager will display the cell phones in range. Double-tap the cell phone icon that you wish to connect to and continue to the next step to pair with this cell phone.



4. Please key in a passkey when prompted, and key in the same passkey on the cell phone to complete the pairing process.

Bluetooth Connection Wizard
Partner with a cell phone



Passkey:

How to use this screen

Please enter a passkey, which will be used to authenticate the connection and to encrypt data transferred.

The passkey needs to be numbers only (no letters), as you will have to enter it again on your cell phone.

Check your phone after you hit 'Next' and re-enter the passkey when prompted.

Cancel Back Next



5. Tap "Finish" to complete this step.

Bluetooth Connection Wizard
Partner with a cell phone

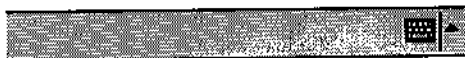


Shortcuts created

Connection shortcut(s) have been created for every supported service your phone offers.

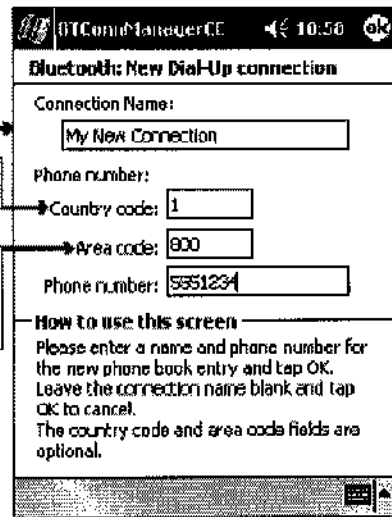
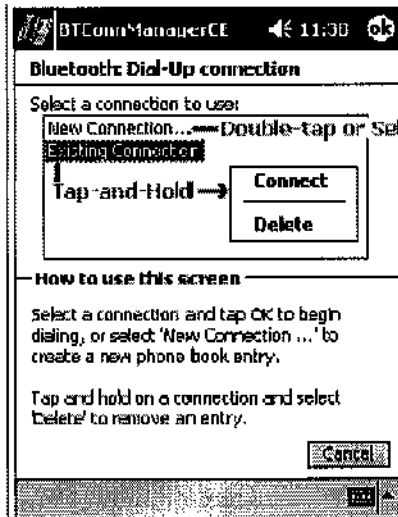
To connect:
From the Bluetooth Manager "My Connections" screen, double-tap the connection. Or tap-and-hold the connection icon and select 'Connect' from the menu.

Cancel Back Finish



Create a Bluetooth Dial-up connection

1. Create a connection to the device that will provide telephone access.
2. From the Bluetooth Manager, My Connections tab, tap-and-hold the Dial-up Networking connection shortcut, and then select Connect from the pop-up menu.
3. On the first Bluetooth: New Dial-up Connection screen, double-tap New Connection...



4. On the second Bluetooth: New Dial-up Connection screen:

- a) Enter a name for the connection
- b) If dialing outside of the default country setting, enter the country code
- c) If dialing outside of the default area code setting, enter the area code
- d) Enter the phone number to be dialed.

5. Tap OK

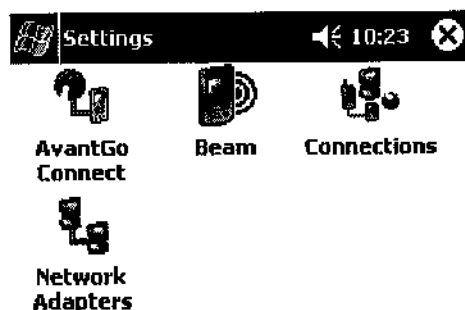
Please follow the Dial-Up connection procedures above to complete the Dial-Up settings.

Refer to the PocketPC documentation for assistance.

After the connection is active, open a web browser on the PocketPC.

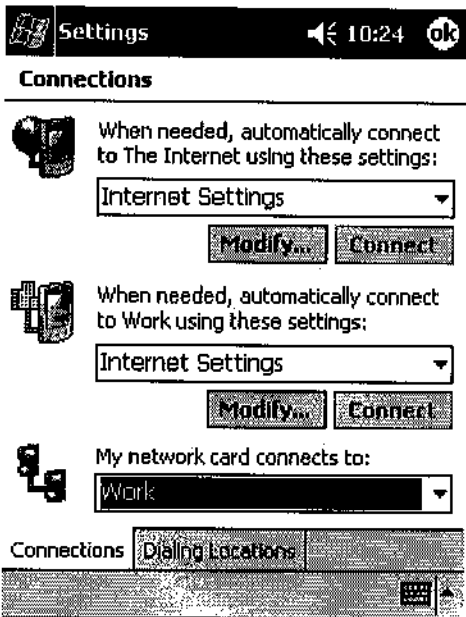
Alternatively, you could set up the connection the traditional way, if the above method did not work for you.

1. Click on "Start" button on the top of the menu bar.
2. Select "Settings", click on the "Connections" tab.

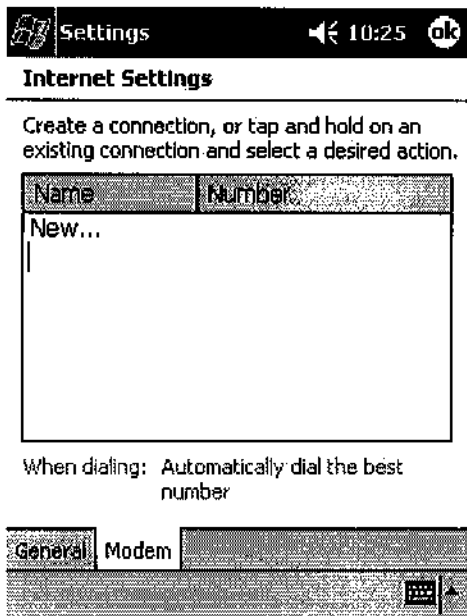




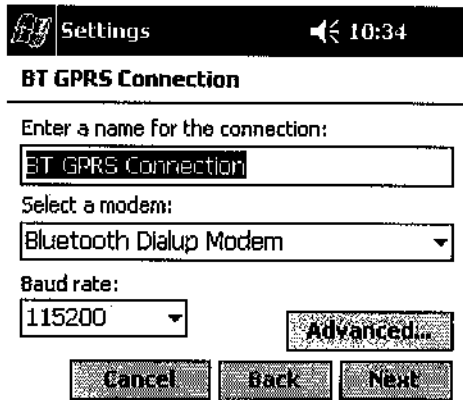
3. Click on the "Connections" icon. On the top "Internet Settings", click "Modify".



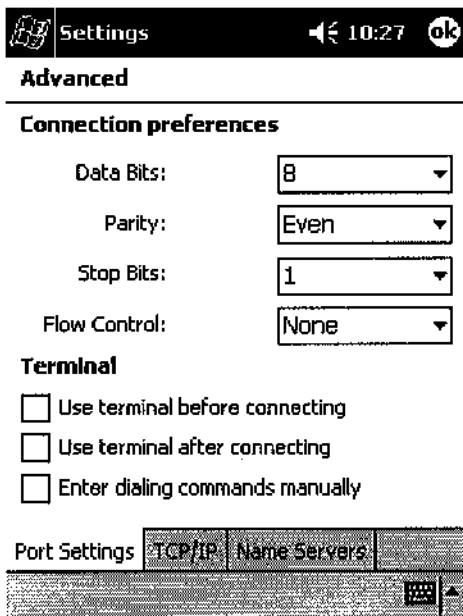
4. Click "New..." to start a new connection.



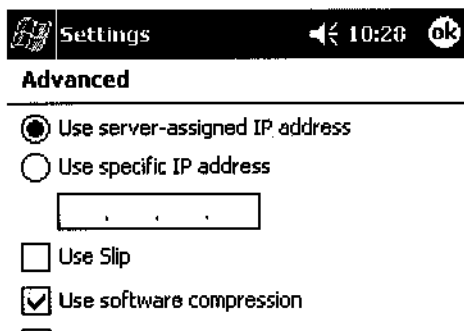
5. Give the new connection a name, select "Bluetooth Dialup Modem", and set the baud rate at "115200".



6. Click "Advanced...", change the "Parity" to "Even", "Stop Bits" to "1", and "Flow Control" to "None".



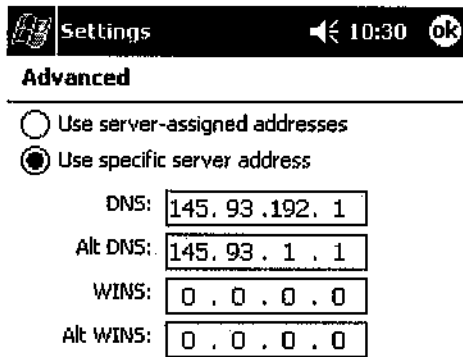
7. Click on the "TCP/IP" tab, and make sure both "Use software compression" and "Use IP header compression" checkboxes are selected.



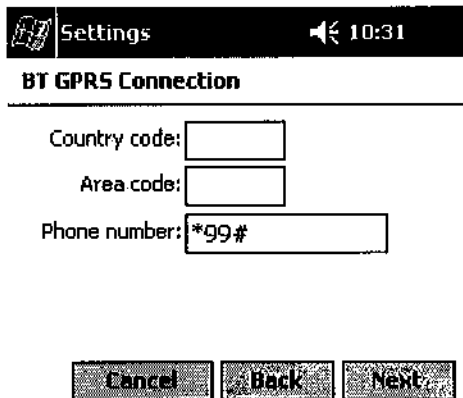
Use IP header compression



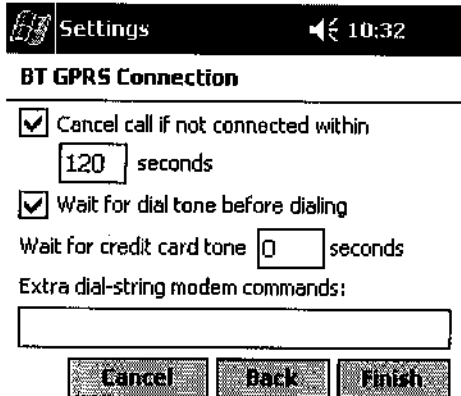
8. Click on the "Name Servers" tab. Some GPRS service may require you to enter the DNS addresses, please check with your GPRS ISP before making the changes. Otherwise, leave the radio button selected at "Use server-assigned addresses" and click "OK".



9. Click "Next", enter the phone number for your GPRS connection. Then click "Next".

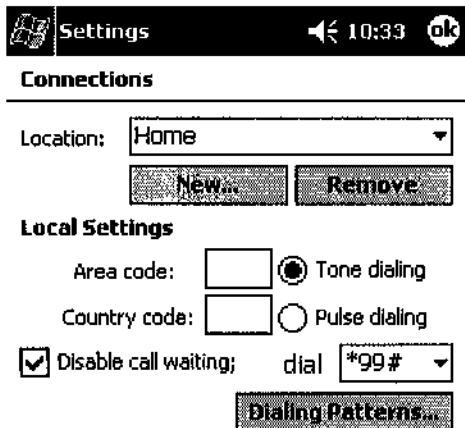


10. Leave the settings as it is in this page, and click "Finish".

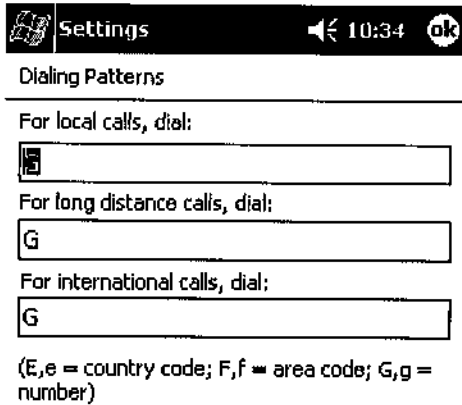


11. Click "OK", and in the Connections page, click on the "Dialing Locations" tab.

- Change the "Location:" to "Home".
- Delete the entries in "Area code:" and "Country code:".
- Select the "Disable call waiting;" checkbox.
- Enter the phone number of your GPRS service again. Then click on "Dialing Patterns...".



12. Change all entries to "G", assuming you are making a local GPRS phone call. Then click "OK".



The screenshot shows the 'Settings' application interface. At the top, there is a status bar with a signal strength indicator, the word 'Settings', a speaker icon, the time '10:34', and an 'ok' button. Below this is the 'Dialing Patterns' section. It contains three input fields: 'For local calls, dial:' with a small icon to its left and an empty field; 'For long distance calls, dial:' with the letter 'G' in the field; and 'For international calls, dial:' with the letter 'G' in the field. At the bottom of the screen, there is a note: '(E,e = country code; F,f = area code; G,g = number)'. There is also a small 'Edit' button with a keyboard icon on the right side of the screen.

13. Now you have set up a GPRS Bluetooth Connection. Click the "Connect" button and click "OK" without entering any user name or password, within a few seconds you should be connected to the Internet.

14. Open "Internet Explorer" and start surfing the net.

Serial port setting for WinCE

The use of a Bluetooth wireless serial port connection is identical to the use of a physical cable serial port connection between two devices.

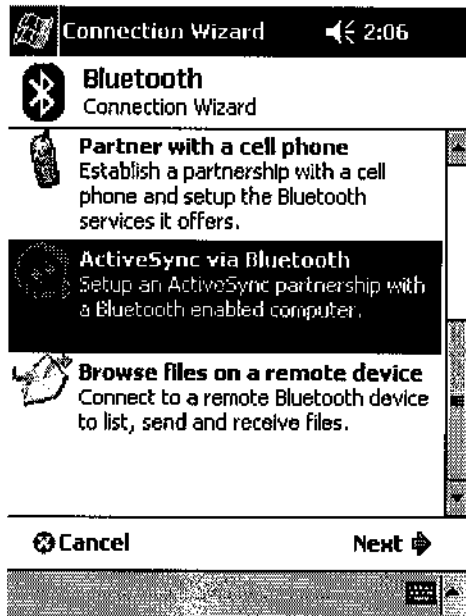
As with a physical connection, the application that will use the connection must be configured to use the correct serial port.

To determine the COM port assigned to the Bluetooth serial port:

1. From the Today Screen, tap the Bluetooth icon to open the Bluetooth Control Panel.
2. Use the scroll arrows at the bottom-right of the screen to expose the Serial Port tab, and then select the Serial Port tab. The Outbound COM Port is listed in the lower portion of the screen. Configure the application that will use the Bluetooth Serial Port to send data to this port.

ActiveSync setting for WinCE

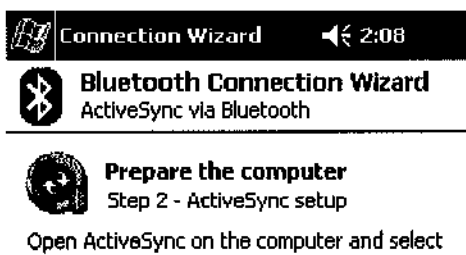
1. To establish the ActiveSync connection on a PDA, please tap "ActiveSync via Bluetooth" from the Bluetooth connection wizard, and click "Next".



2. Make sure your computer is capable of accessing your PDA, and determine which "COM" port number (For example "COM6") is used for incoming Bluetooth connections (refer to ActiveSync setting for Windows section). You will need this information later. Tap "Next" to next step.



3. Make sure your PC side's ActiveSync "Connection Settings" is using the right COM port, click "Next".

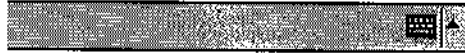


"Connection Settings..." from the "File" menu.

Note: If the "Get Connected" wizard appears, connect your handheld to the computer via the cradle or a cable once and try again.

In the Connection Settings screen, enable "Allow serial cable or Infrared connection to this COM port" and select the COM port assigned in Step 1.

Cancel Back Next




4. Tap screen and choose a device on the list.



Bluetooth Connection Wizard
ActiveSync via Bluetooth

Device:

 <No device selected>
Tap here to choose a device

How to use this screen

Select the computer prepared in the previous steps of the wizard by tapping the selection box above and locating it in the list.

Tap 'Next' to continue or 'Back' to return to the previous screen. To exit this wizard without completing the connection, tap

Cancel Back Next



5. Select a device you want to use.



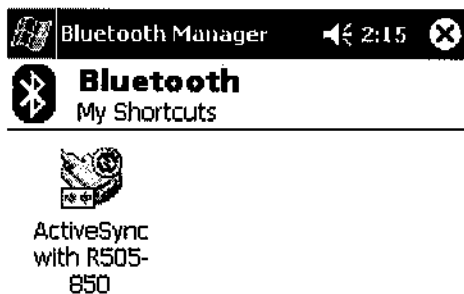
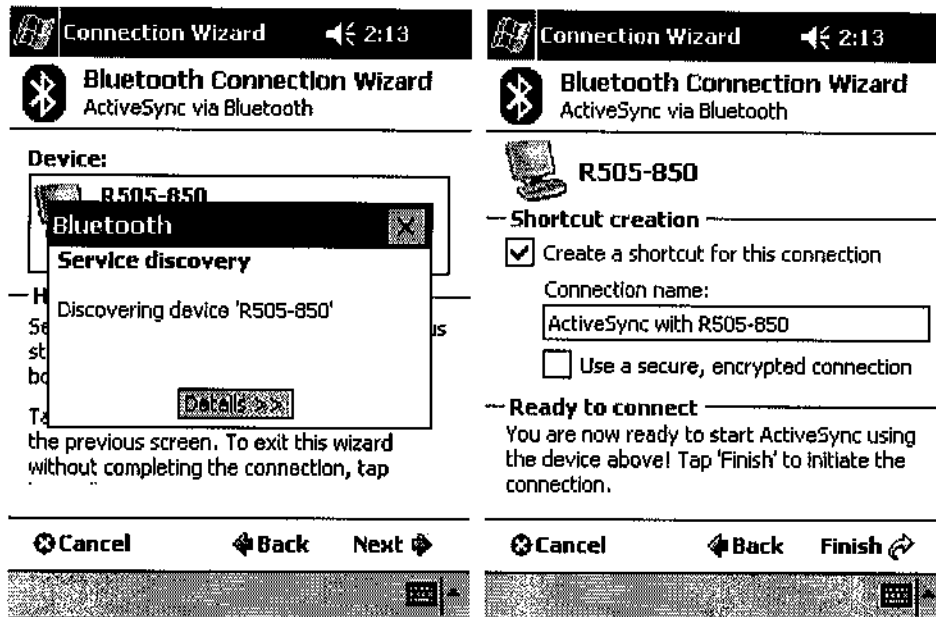
Bluetooth Browser
Please select a device:



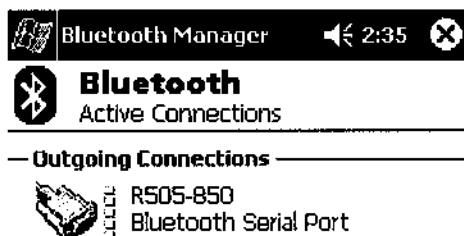
R505-850



6. Follow the instructions to create a shortcut for the Bluetooth ActiveSync connection.



7. After the shortcut is created, you can see your device is connected with your computer. You can tap "Active Connections" to check the signal strength.



— Incoming Connections —



Install Bluetooth on MAC O. S.

The system requirement for using this USB Bluetooth adapter on MAC O. S. ,

-Mac O. S. X 10.1.4 or greater

-One free USB port

-Download Bluetooth upgrade pack, "Technology Preview 2.1" from <http://www.apple.com/bluetooth/> and follow the instructions inside the upgrade pack.

How to pair with my mobile phone?

How to pair with Nokia 6310

(1). To activate Bluetooth on your Nokia 6310, press "Menu", select "Bluetooth" and "On".

(2). From your notebook or PDA, begin a Bluetooth device search. A mobile phone icon will show up in the right pane of the Bluetooth software window with the name of your Nokia 6310.

(3). Double click the mobile phone icon to discover the services it provides. You should see COM, Dial-up networking, Fax, or more, depending on the model of your Nokia mobile phone.

(4). From your Nokia 6310, select "Search for Bluetooth accessories", the phone starts searching for devices and accessories.

(5). Scroll to the device you want and press "Select".

(6). If devices have not been paired, the user is asked to enter the passcode of the desired device. (The Nokia Bluetooth Passcode is a 1 to 16 character-long numeric code of your choice)

- (7). A Passkey dialog box will pop up on your notebook or PDA, type in the same passkey you've entered on your mobile to complete pairing.
- (8). If pairing was successful, a "Paired with ***" message box will pop up on your mobile phone. You should also see a tick on the side of the mobile phone icon in your notebook or PDA.
- (9). You are now able to use the services of your mobile phone.

How to pair with Nokia 8910

- (1). To activate Bluetooth on your Nokia 8910, press "Menu", select "Bluetooth" and "On".
- (2). From your notebook or PDA, begin a Bluetooth device search for your Nokia 8910.
- (3). A mobile phone icon will show up in the right pane of the Bluetooth software window with the name of your Nokia 8910.
- (4). Double click the mobile phone icon to discover the services it provides. You should see COM, Dial-up networking, Fax, or more, depending on the model of your Nokia mobile phone.
- (5). From your notebook or PDA, double click on the service you wish to use and it will trigger a dialog box "Connect with ***?" on your mobile phone. (where *** is the name of your notebook or PDA)
- (6). Push the "Accept" button, and enter a passcode, e.g. 55 and push the OK button. (The Nokia Bluetooth Passcode is a 1 to 16 character-long numeric code of your choice)
- (7). A Passkey dialog box will pop up on your notebook or PDA, type in the same passkey you've entered on your mobile.
- (8). If pairing was successful, a "Paired with ***" message box will pop up on your mobile phone. You should also see a tick on the side of the mobile phone icon in your notebook or PDA.
- (9). You are now able to use the services of your mobile phone.

For further Bluetooth functions on your Nokia mobile phone, please refer to Nokia's User's Guide

How to pair with Ericsson T39m

- (1). On your mobile phone, push the "Menu" button, scroll to "Extras", "Yes", "Bluetooth", "Yes", "Discoverable", "Yes" to make your Ericsson mobile phone detectable by other Bluetooth devices.
- (2). "Discoverable for 3 minutes" message box will pop up.
- (3). From your notebook or PDA, begin a Bluetooth device search for your Ericsson T39.
- (4). A mobile phone icon will show up in the right pane of the Bluetooth software window with the name of your Ericsson T39.
- (5). Double click the mobile phone to discover the services it provides. You should see Serial Port, Dial-up Networking, Fax, and more, depending on the model of your mobile phone.
- (6). From your mobile phone, scroll to "Extras", "Yes", "Bluetooth", "Yes",

"Discover", "Yes". A list of discovered devices appears.

(7). You can now choose the Bluetooth device you wish to connect to, then select "Add to paired", the mobile phone will prompt you for a "Passkey". Type in a passkey, e.g. 55 and push "Yes".

(8). A Passkey dialog box will pop up on your notebook or PDA, type in the same passkey you've entered on your mobile. A "Pairing Succeeded" message box will pop up.

(9). On your mobile phone, enter a name for your notebook or PDA, or push the Yes button to accept the default Name tag.

(10). If the pairing process is successful, you should see a tick on the side of the mobile phone icon on your notebook or PDA.

(11). You should now be able to use the services of your mobile phone.

For further Bluetooth functions on your Ericsson mobile phone, please refer to Ericsson's User's Guide

How to pair with Ericsson T68

(1). On your mobile phone, scroll to "Connect", "Yes", "Bluetooth", "Yes", "Discoverable", "Yes" to make your Ericsson mobile phone detectable by other Bluetooth devices.

(2). "Discoverable for 3 minutes" message box will pop up.

(3). From your notebook or PDA, begin a Bluetooth device search for your Ericsson T68.

(4). A mobile phone icon will show up in the right pane of the Bluetooth software window with the name of your Ericsson T68.

(5). Double click the mobile phone to discover the services it provides. You should see Serial Port, Dial-up Networking, Fax, and more, depending on the model of your mobile phone.

(6). From your mobile phone, scroll to "Connect", "Yes", "Bluetooth", "Yes", "Discover", "Yes". A list of discovered devices appears.

(7). You can now choose the Bluetooth device you wish to connect to, then select "Add to paired", the mobile phone will prompt you for a "Passkey". Type in a passkey, e.g. 55 and push "Yes".

(8). A Passkey dialog box will pop up on your notebook or PDA, type in the same passkey you've entered on your mobile. A "Pairing Succeeded" message box will pop up.

(9). On your mobile phone, enter a name for your notebook or PDA, or push the Yes button to accept the default Name tag.

(10). If the pairing process is successful, you should see a tick on the side of the mobile phone icon on your notebook or PDA.

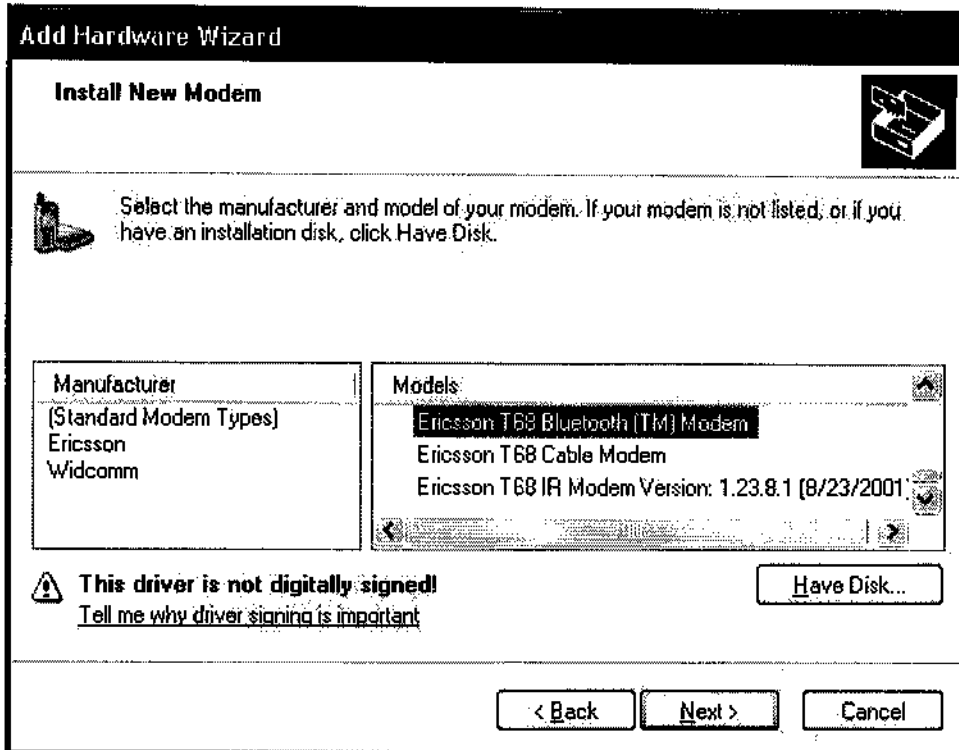
(11). You should now be able to use the services of your mobile phone.

For further Bluetooth functions on your Ericsson mobile phone, please refer to Ericsson's User's Guide

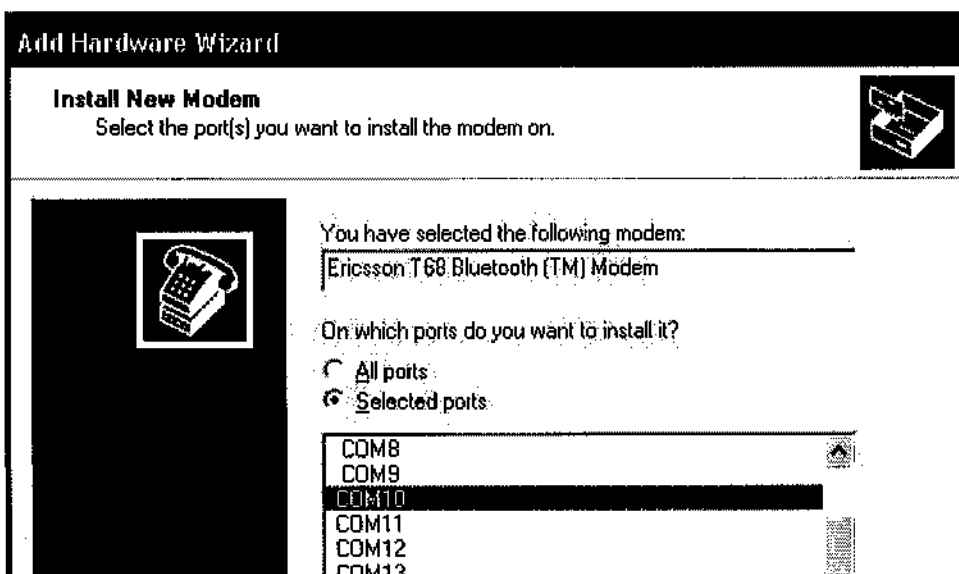
How to sync with Ericsson T68 via XTNDConnectPC

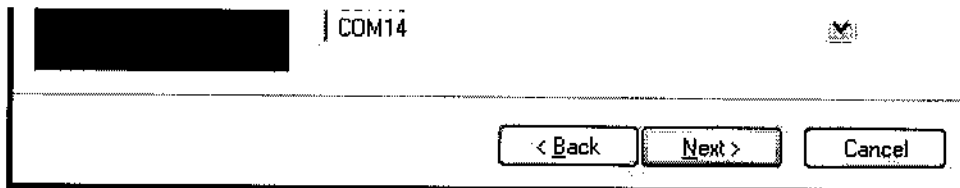
(A) Assign COM port

- (1) After you have installed Microsoft Outlook and XTNDConnectPC_R2A04_English, you would need to install a new modem to communicate with your mobile phone.
- (2) Go into Start->Settings->Control Panel->Phone and Modem Options, under "Modems" tab, click on "Add" , tick the "Do not detect my modem, I will choose from list" and click "Next" .
- (3) Choose Ericsson and Ericsson T68 Bluetooth (TM) Modem, then click "Next" .

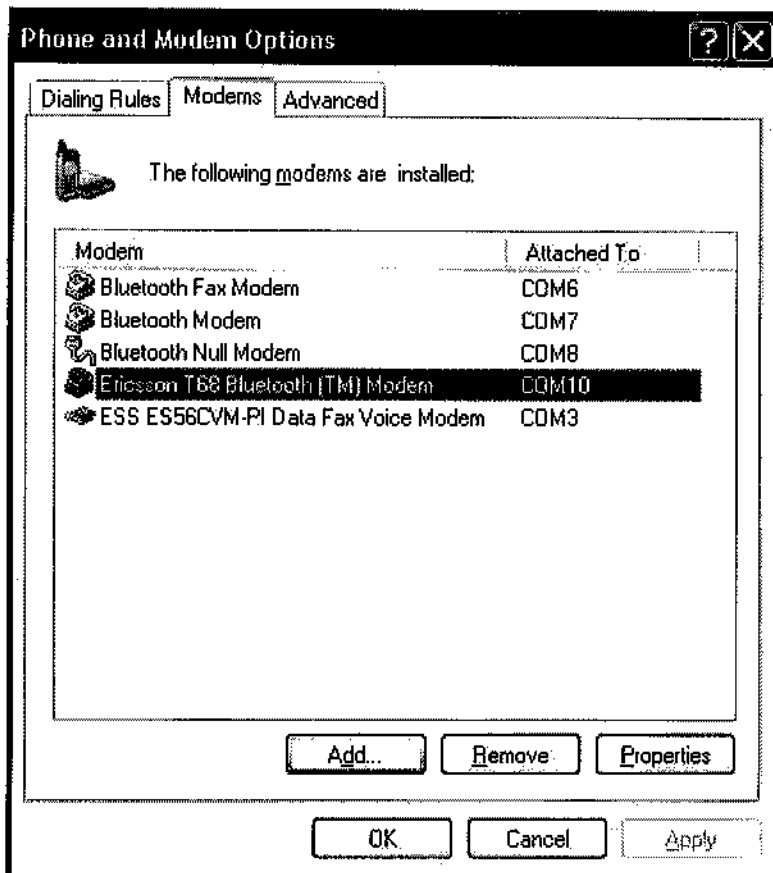


- (4) Select and assign a COM port (e.g COM10) to the newly added Modem. Click "Next" .



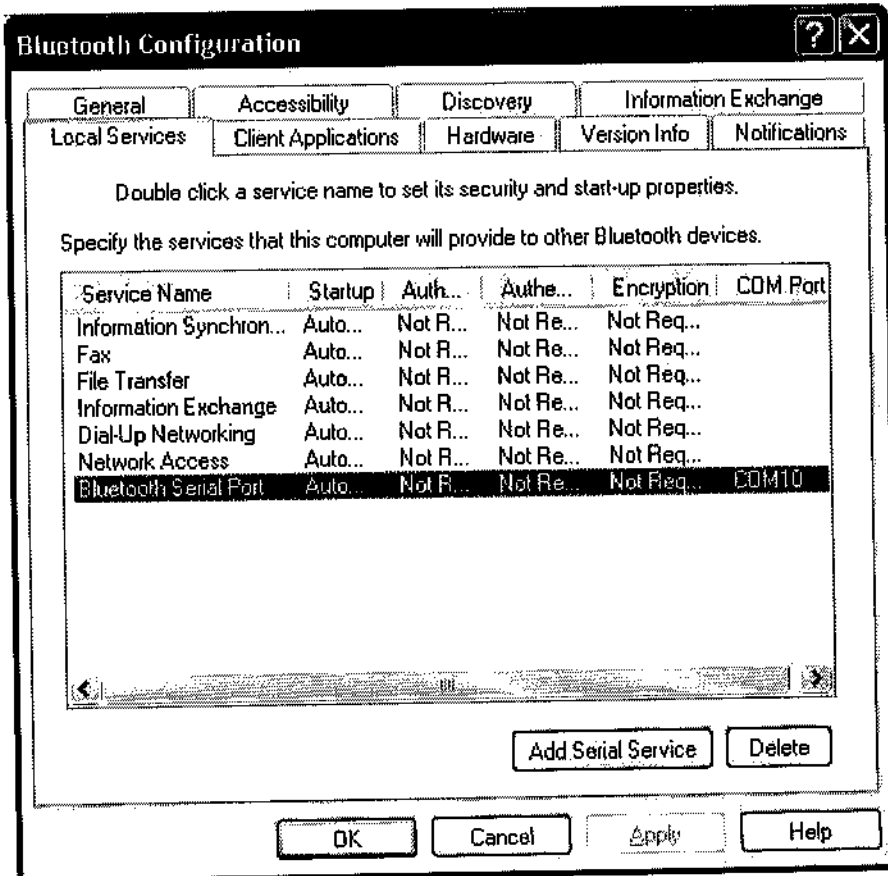


(5) Click "OK" to finish the set up process. Remember the port number as you will need it later.

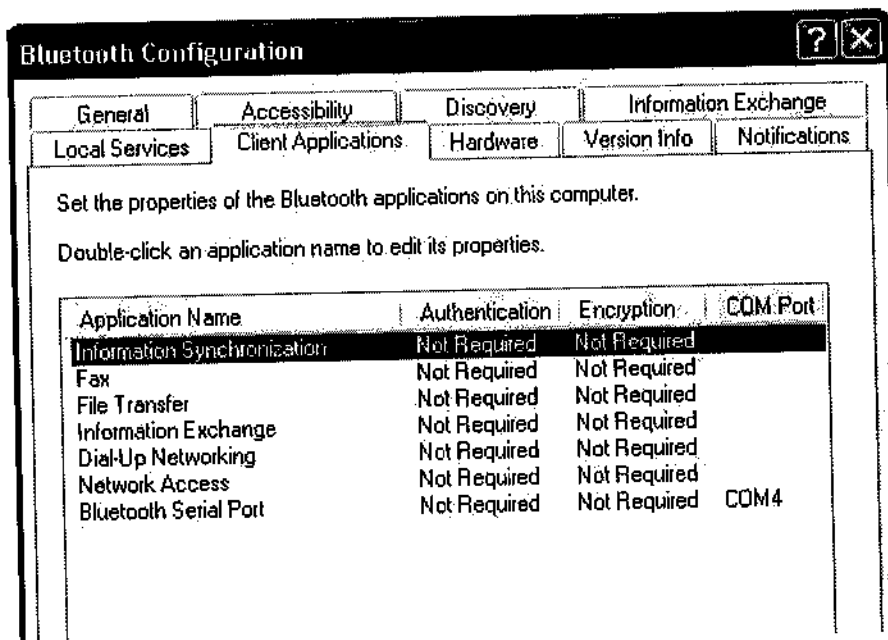


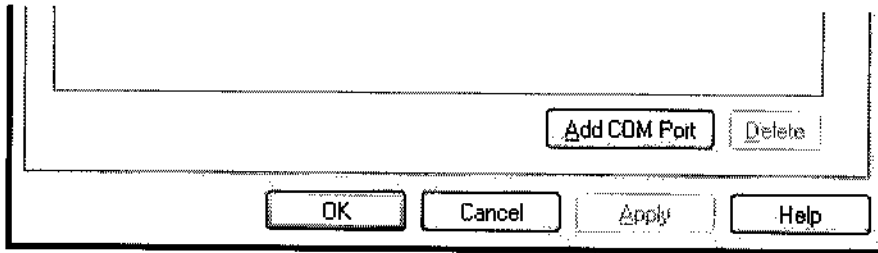
(B) Configure Bluetooth software

- (1) Check the COM ports used by the Bluetooth software are correct.
- (2) Go to Start->Settings->Control Panel->Bluetooth Configuration, on the "Local Services" tab, the COM port should be the one you've just assigned to your Ericsson phone (e.g. COM10).
- (3) To change the assigned COM port, double click the "Bluetooth Serial Port" and choose the correct one from the "COM Port:" drop down list.



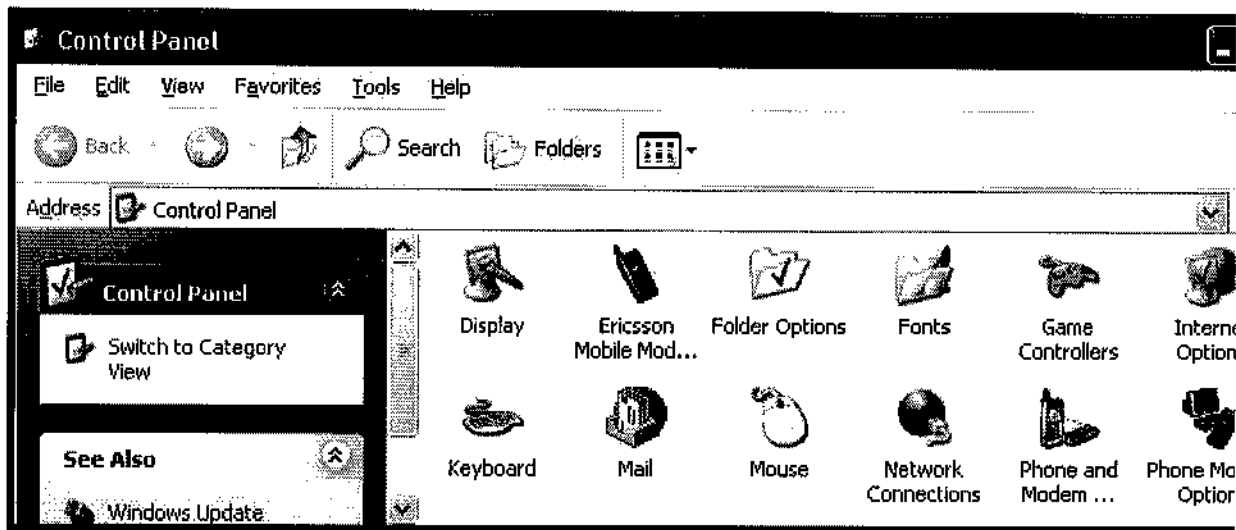
- (4) Check the COM port used by "Bluetooth Serial Port" in the "Client Applications" tab (e.g. COM4), remember this COM port too.
- (5) To change the assigned COM port, double click the "Bluetooth Serial Port" and choose the correct one from the "COM Port:" drop down list.



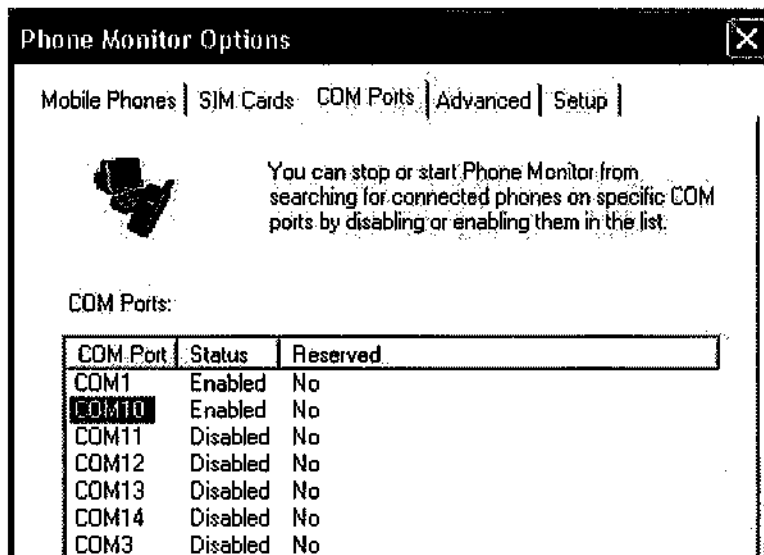


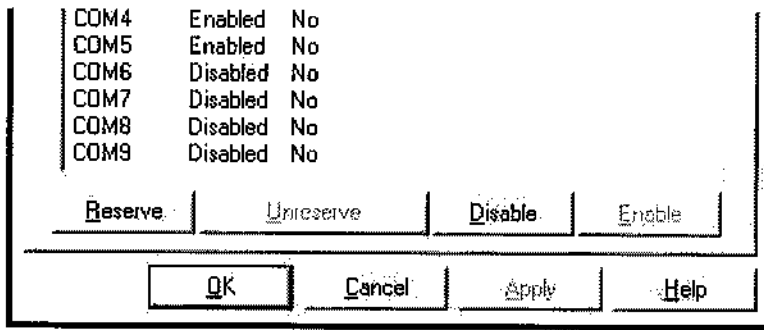
(C) Configure Ericsson' s Phone Monitor

- (1) Go to Start->Settings->Control Panel->Phone Monitor Options.



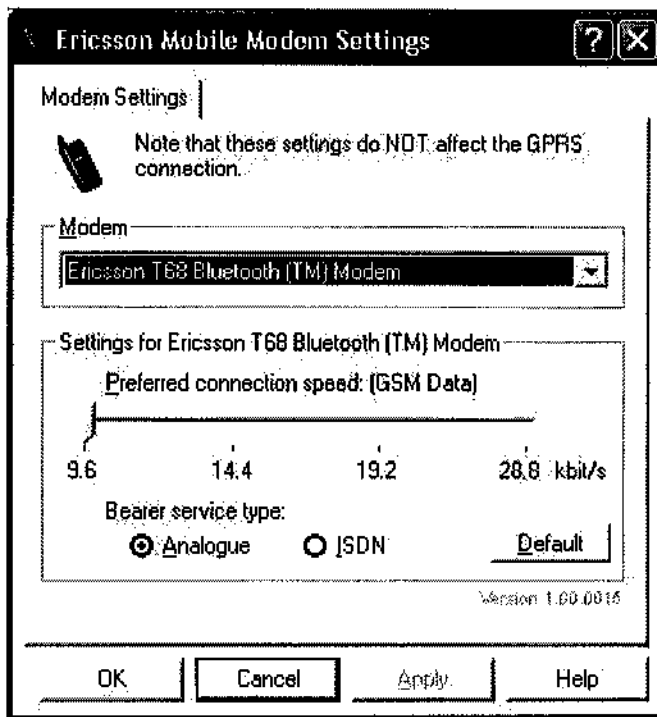
- (2) Enable the COM port you have just assign the Ericsson Bluetooth Modem (e.g. COM10). This COM port is the one that you want to use to communicate with your phone. Make sure the COM port used by "Bluetooth Serial Port" in the "Client Applications" tab (e.g. COM4) is enabled as well. Click "OK" when finished.





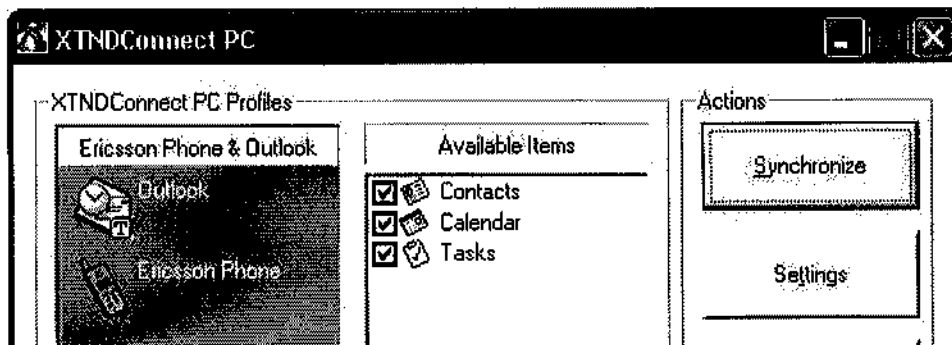
(D) Configure Ericsson's Mobile Modem Settings

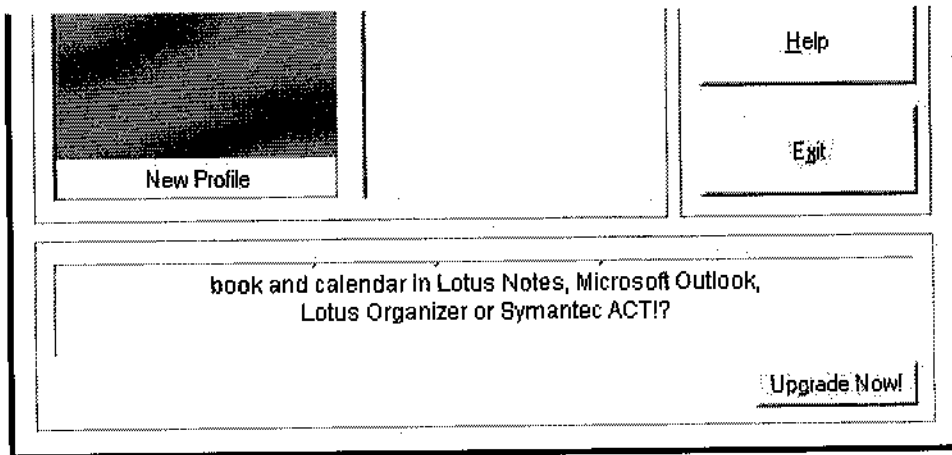
(1) Go to "Start->Settings->Control Panel->Ericsson Mobile Modem Settings", "Modem Settings" tab and make sure the "Modem" dropdown list has the correct modem highlighted.



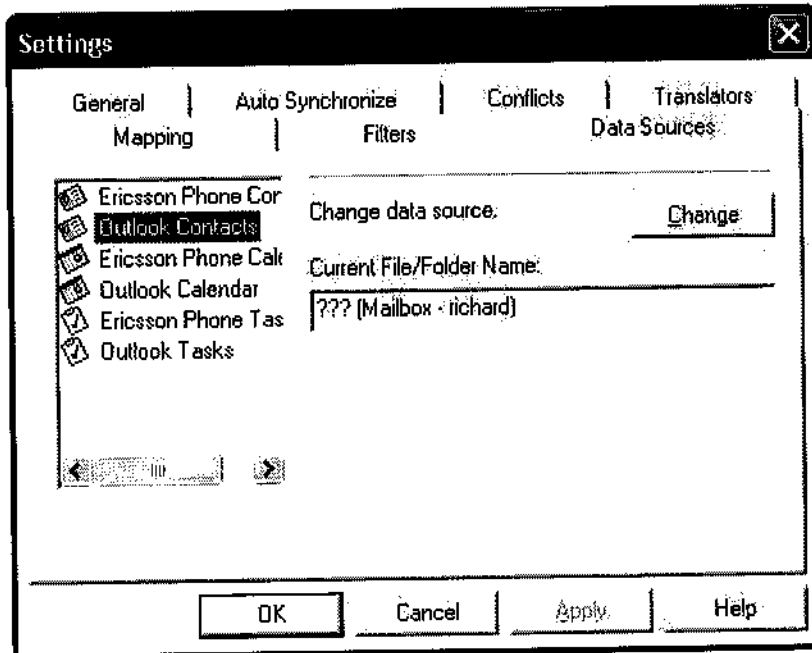
(E) Configure Ericsson's XTNDConnectPC

(1) Go to Start->Programs->XTNDConnectPC->Synchronize Ericsson Phone with Outlook.

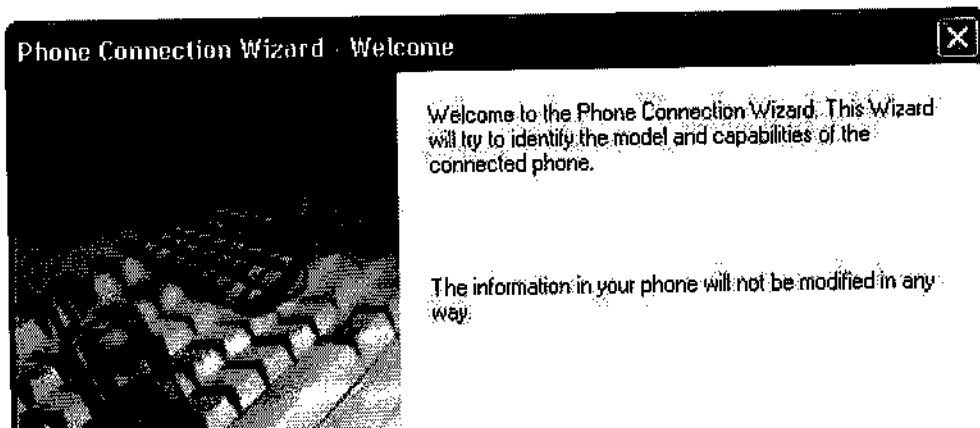




(2) Click on "Settings", "Data Sources" tab and assign data sources to "Outlook Contacts", "Outlook Calendar", and "Outlook Tasks". Then click "OK".

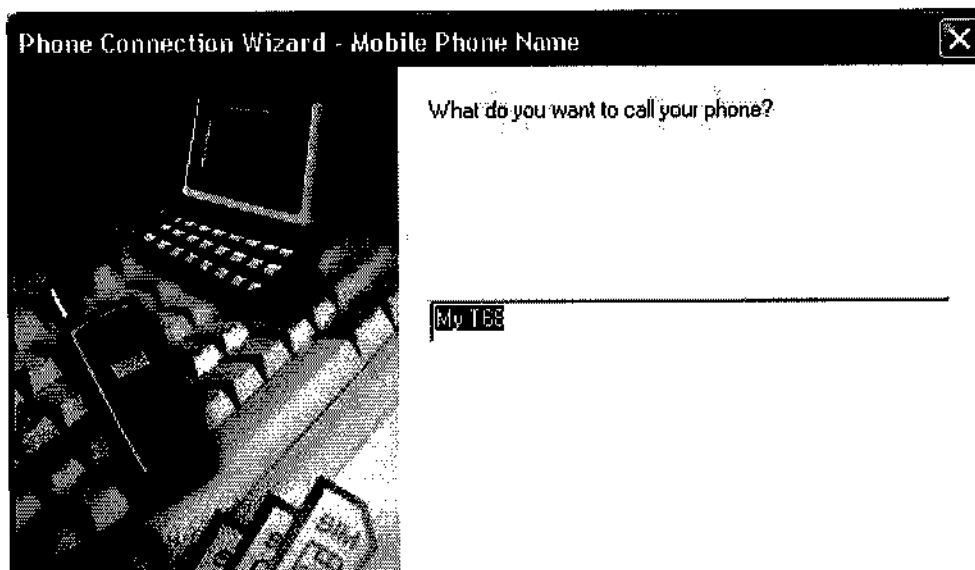
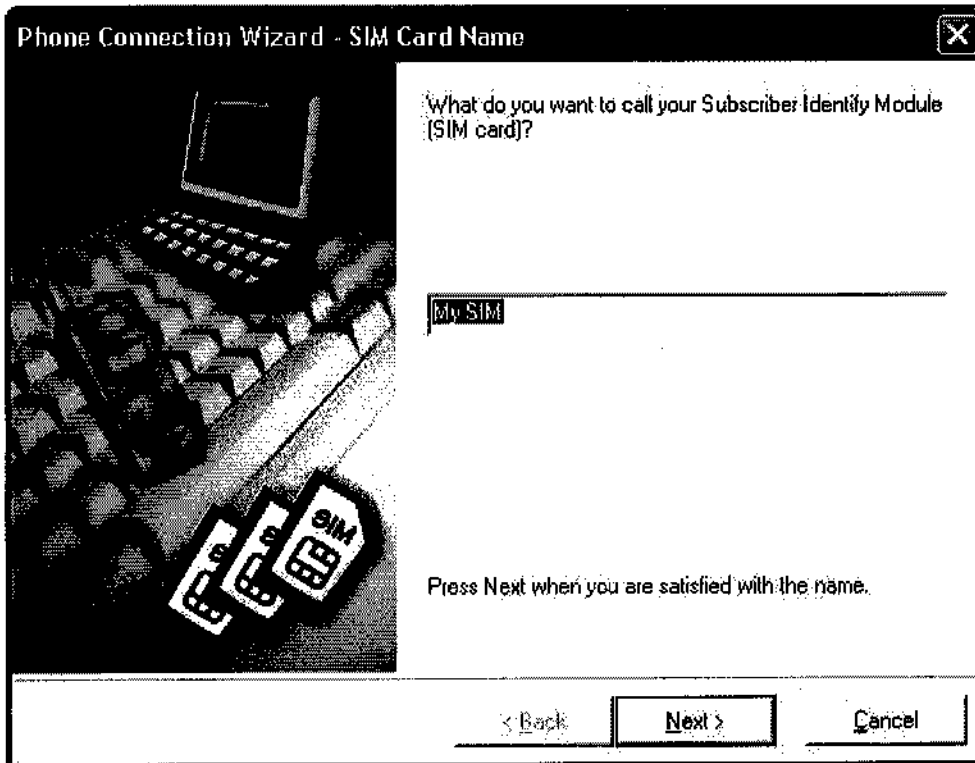


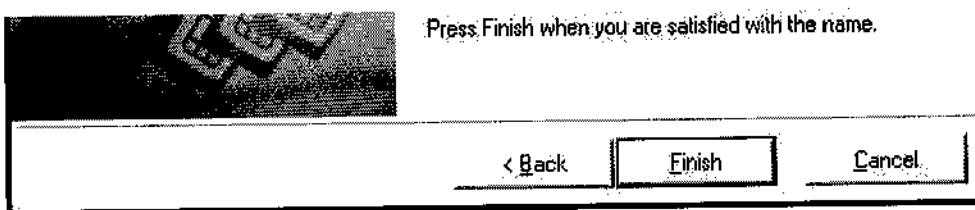
(2) With all the set up completed, reboot your system, the Phone Monitor should prompt you to enter some more information.





(3) Just follow the Wizard and when the set up process is completed, you should be able to synchronize your Ericsson T68 with your system.

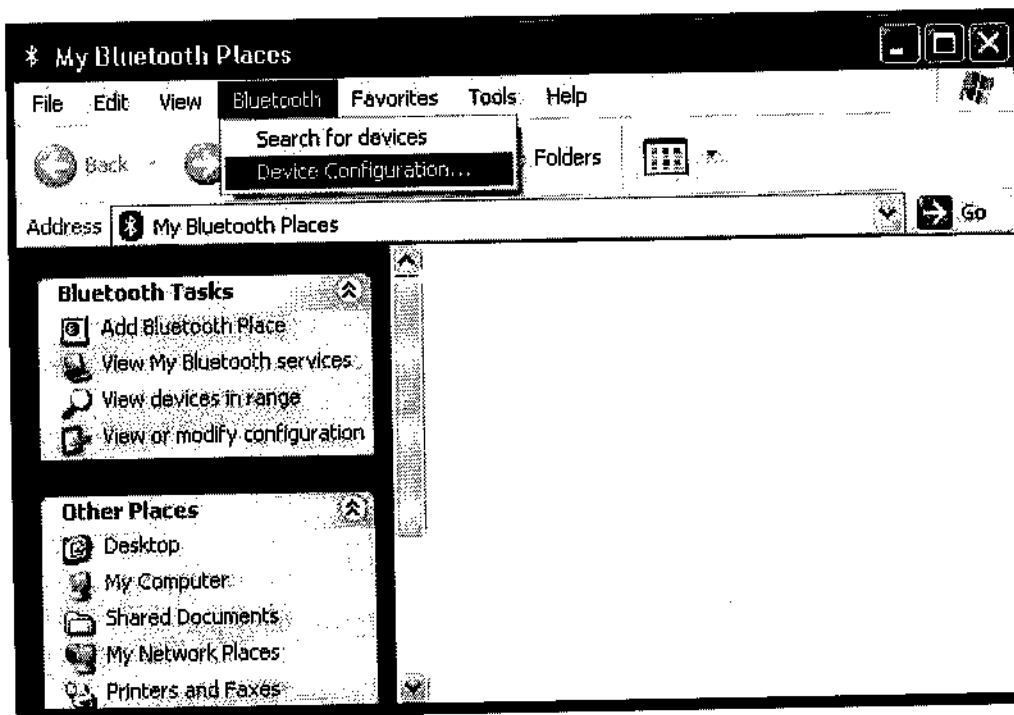




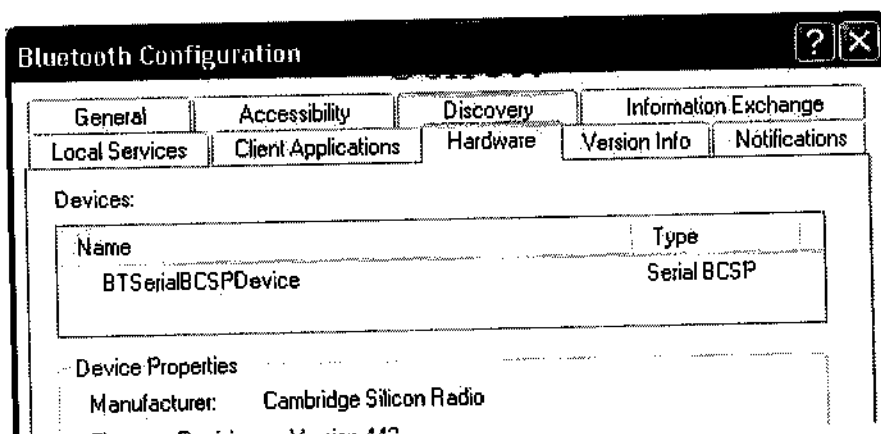
Troubleshooting

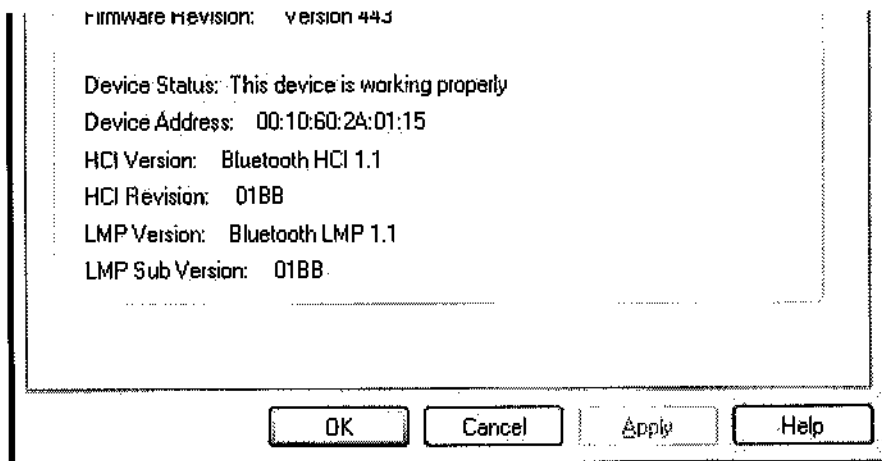
Q1.: Why couldn't my Bluetooth device find nearby Bluetooth devices?

A1.: (1) Please check that your Bluetooth device is enabled by opening the Bluetooth Configuration window.



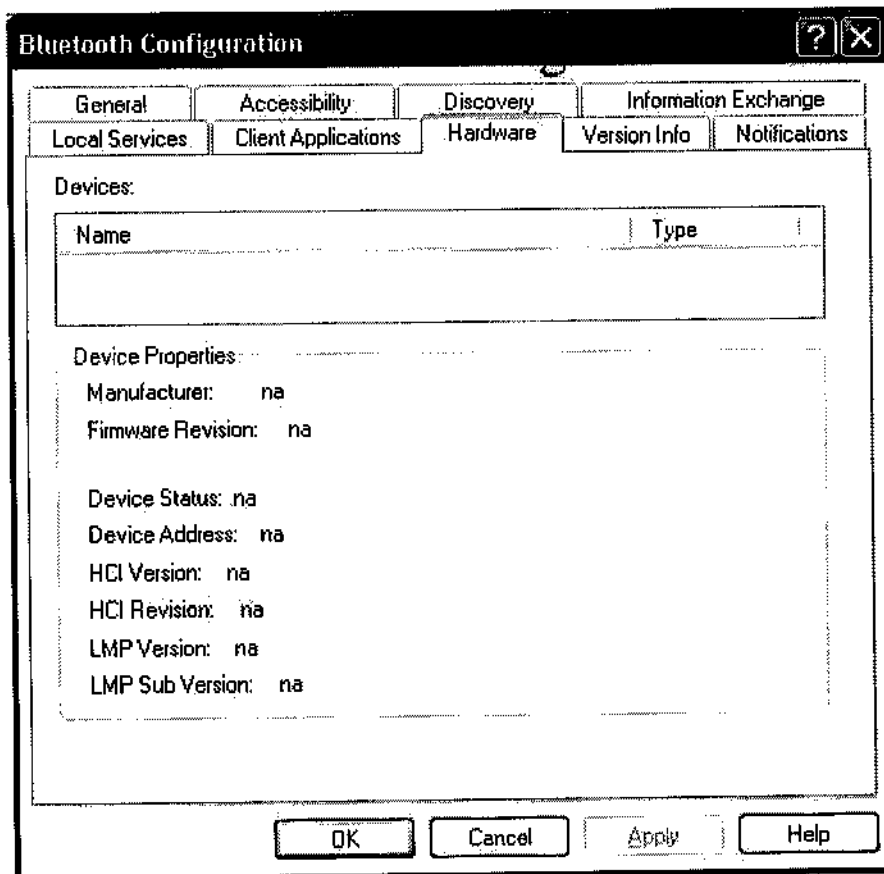
(2) If the Bluetooth device is enabled, you will see something of the following nature.





(3) Otherwise, for USB Bluetooth adapter, please unplug then plug in the USB Bluetooth adapter to enable the device.

For CF Bluetooth card, please reboot the system with the CF Bluetooth card securely inserted in the PCMCIA slot.



Q2.: The Bluetooth software for Windows is properly installed, but why doesn't my CF card work after I unplug then plug it in again?

A2.: CF Bluetooth card is not a plug-n-play device.

Please reboot the system with the CF Bluetooth card securely inserted in the PCMCIA slot to enable the driver again.

