

# 1.4

## Connection Status Screen

This screen displays:

The connection name

The remote device's name

The connection status: Connected/Not Connected

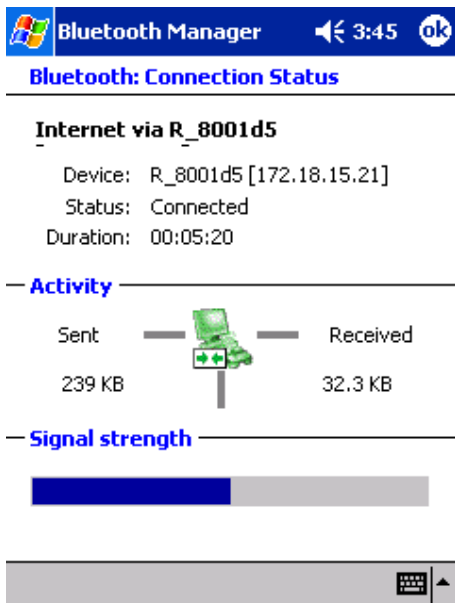
The length of time the connection has been active

Activity information:

The amount of data sent

The amount of data received.

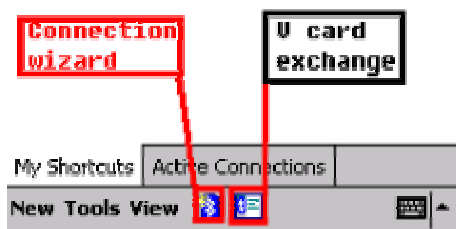
A graphic signal strength indicator.



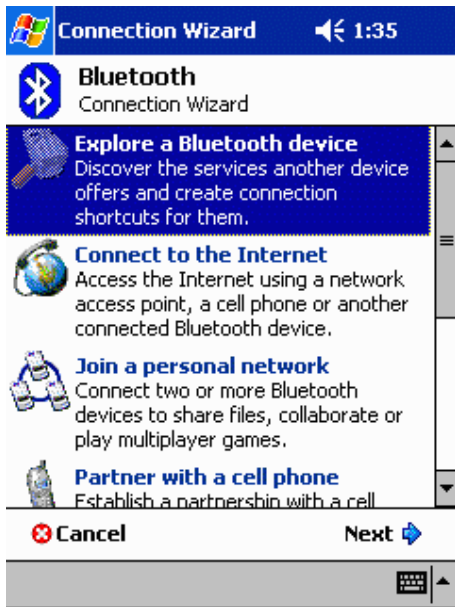
## Network sharing setting for WinCE

### Explore Bluetooth device in your range

1. You can check all the available Bluetooth devices by using "**Connection Wizard**". To start "**Connection wizard**", please tap the "**star B**" icon at bottom bar of the "**Bluetooth Manager**".



2. There are many connection types to choose from in the "**Connection Wizard**". The first connection type explores all available Bluetooth devices within the Bluetooth connectivity range. Other connection types explore specific services in the Bluetooth device, e.g. Dial-Up, Information Synchronization (ActiveSync), File transfer.. etc. Please click "**Explore a Bluetooth device**" then click "**Next**".

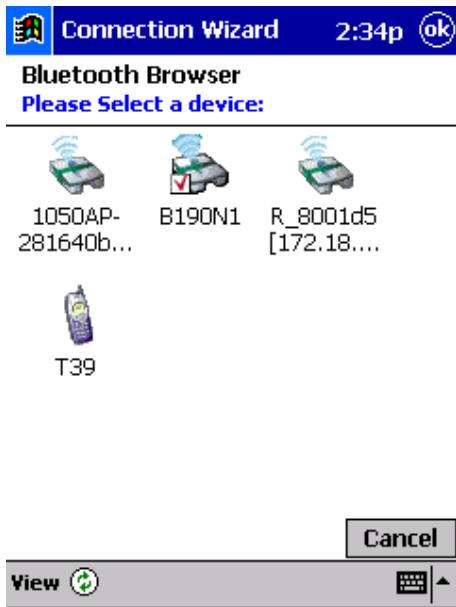


3. Follow the "**Connection Wizard**", tap the device selection box in the middle of the screen, it will jump to the next page.



4. All the Bluetooth enabled devices within the discoverable range will be shown.

In this example we will select the access point icon "**R\_8001d5[172.18...**".



5. All the available services for this device are shown as below. Select the service that you'd like to use and create a connection shortcut for this device, then tap **"Next"** to the next step.



8. Tap **"Finish"** to create a shortcut to the Access Point on the Bluetooth manager.



9. If you want to use this service, double-tap the icon, or tap-and-hold the connection icon and select "Connect" from the menu. Then you can access the Internet.



Note: Consult the MIS personnel in your company for proxy setting if necessary.  
For setting up the Proxy to surf the Internet via a Bluetooth Access Point:

1. Click on "Start" button, click "Settings", and "Connections" tab. Click on the "Connections" icon.
2. Change the "My network card connects to:" drop-down list to "Work", change the "When needed, automatically connect to Work using these settings:" drop-down list to "Work Settings", and click "Modify".

Connections

When needed, automatically connect to The Internet using these settings:

Internet Settings

Modify... Connect

When needed, automatically connect to Work using these settings:

Work Settings

Modify... Connect

My network card connects to:

Work

Connections | Dialing Locations

3. Click on the "Proxy Settings" tab, and select both checkboxes, then enter the Proxy IP address obtained from your MIS personnel.

Work Settings

- This network connects to the Internet
- This network uses a proxy server to connect to the Internet

Proxy server:

172.18.0.11

Advanced...

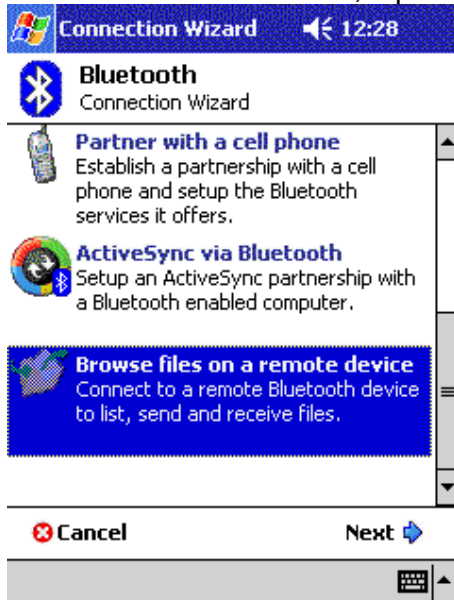
General | Modem | VPN | Proxy Settings

123	1	2	3	4	5	6	7	8	9	0	-	=	←	
Tab	q	w	e	r	t	y	u	i	o	p	[	]		
CAP	a	s	d	f	g	h	j	k	l	;	'			
Shift	z	x	c	v	b	n	m	,	.	/	←			
Ctl	á	ú	`	\							↓	↑	←	→

## File transfer setting for WinCE

File transfer service lets you transfer pictures, documents or music files to other Bluetooth devices. Starting file transfer by using "Connection wizard" from Bluetooth manager.

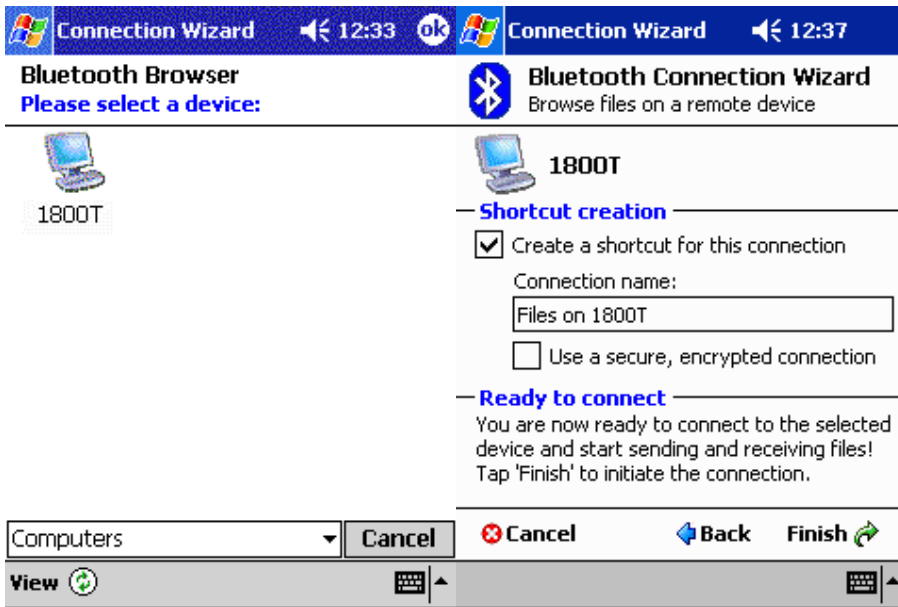
1. At "Connection wizard", tap "Browse files on a remote device", then tap "Next".



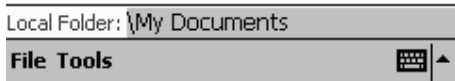
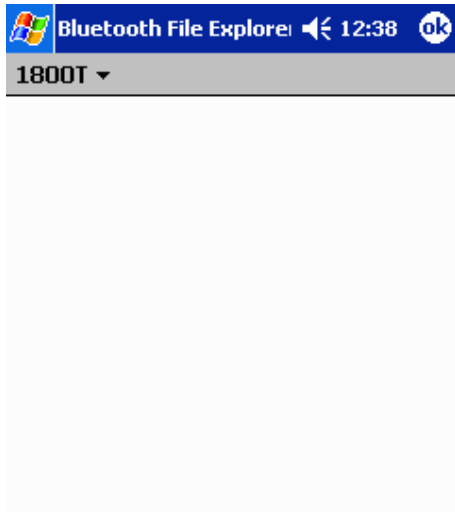
2. Follow the instructions on the screen to the next step.



3. Then select a device that you want to transfer the file(s) to.



4. Follow the instructions to complete the connection setting, and now you can transfer files between the two devices.



#### Change the Remote Device Folder

To move down in the directory structure of the remote device, tap the new folder in the main portion of the Bluetooth File Explorer window.

To move up in the directory structure of the remote device, tap the down-arrow to the right of the currently selected folder and select the new folder from the drop-down list.

#### File Menu

All of the following instructions in the subsections assume that there is an open File Transfer connection with a remote device.

#### Send a File to the Remote Device

To send a file to the remote device, from the File menu, tap Send a File to display the Open screen.



The options on the Open screen are:

- \* Folder-tap the down-arrow and select the folder that contains the file to be sent.
- \* Type-the only option is "All Files (\*.\*)"
- \* A list of files in the selected folder; tap the file to be sent
- \* Cancel button-aborts the Send a File operation.

The selected file is sent automatically when it is tapped, without further intervention, and the Bluetooth File Explorer main screen reappears.

Create a Folder on the Remote Device

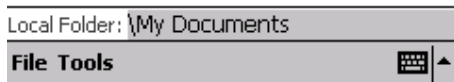
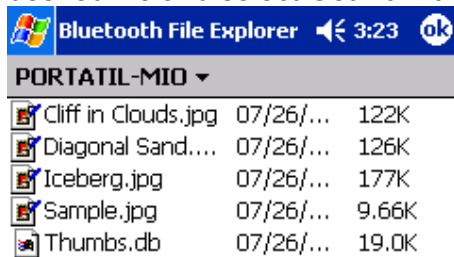
To create a folder on the remote device, navigate to the folder in which the new folder will be placed, and then, from the File menu, tap Create a Folder. Enter a name for the new folder while the default name (New Folder) is highlighted.

Get a File From the Remote Device

To get a file from the remote device:

1. Navigate to the folder on the remote device that contains the file
2. Tap the desired file to highlight it
3. From the File menu, tap Get.

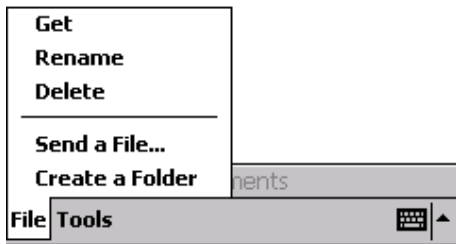
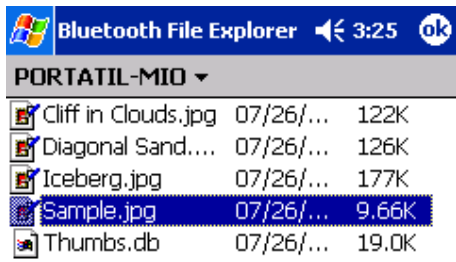
The file is copied to the local folder listed in the Local Folder field near the top of the screen. This operation can also be performed using the tap-and-hold technique: tap-and-hold the desired file and select Get from the pop-up menu.



Delete a File on the Remote Device

To delete a file on the remote device: tap the file to be deleted to highlight it, then, from the File menu, tap delete. Tap OK in the confirmation dialog box.

This operation can also be performed using the tap-and-hold technique: tap-and-hold the desired file and select Delete from the pop-up menu. Tap OK in the confirmation dialog box.



## Dial-up networking setting for WinCE

Dial-up Networking allows you to connect to a remote computer that is connected to a phone line. Once connected, you can browse the Internet, check your email, etc. The remote Bluetooth device that will provide the Dial-up Networking service must have access to a telephone system (either a physical or cellular connection).

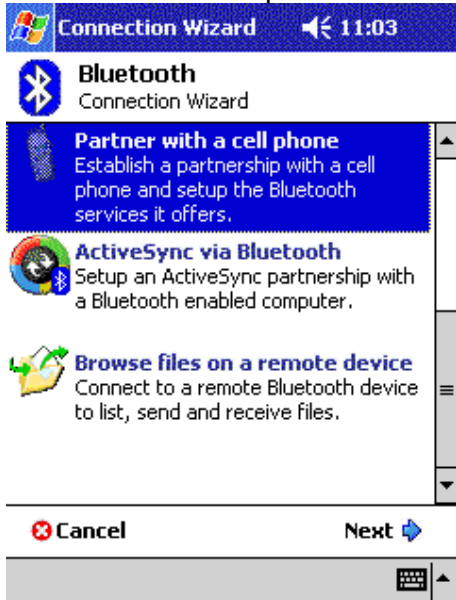
Devices that might provide the Dial-up Networking service include:

- \* Bluetooth-enabled cellular telephones
- \* Bluetooth-enabled desktop computers that are attached to a telephone system
- \* Bluetooth modems.

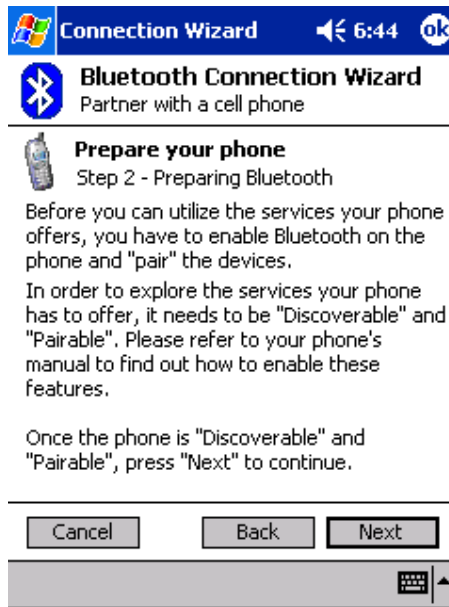
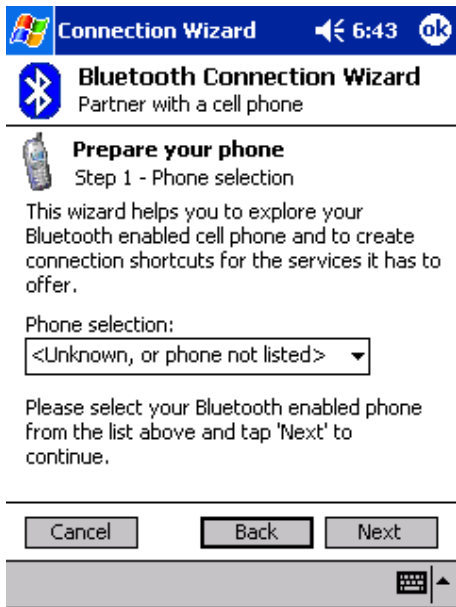
The remote computer to which you are connecting must also be attached to the phone system and capable of answering a call.

1. To begin dial-up networking setup for using a cell phone, please tap "Partner with a cell phone" from Bluetooth connection wizard, and click "Next".

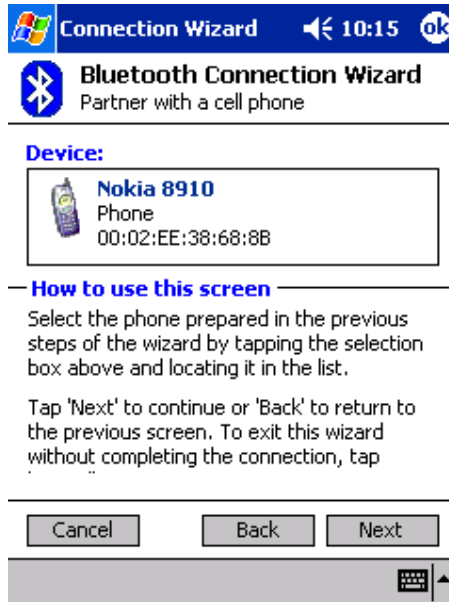
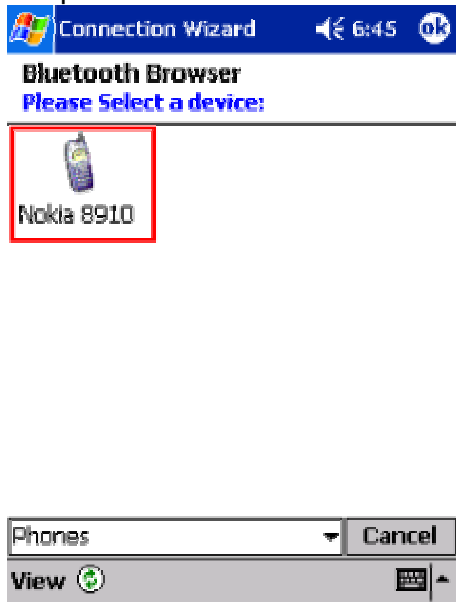
NOTE: For some mobile phones, e.g. Ericsson, we recommend you use the "Explore a Bluetooth device" option rather than the "Partner with a cell phone" option when pairing.



2. And prepare your cell phone in Bluetooth function enable mode, (To enable your cell phone's Bluetooth function, please refer to the user's guide of your cell phone ) and tap "Next" to continue.



3. After searching, the Bluetooth manager will display the cell phones in range. Double-tap the cell phone icon that you wish to connect to and continue to the next step to pair with this cell phone.



4. Please key in a passkey when prompted, and key in the same passkey on the cell phone to complete the pairing process.



### Bluetooth Connection Wizard

Partner with a cell phone



Nokia 8910

Passkey:

#### How to use this screen

Please enter a passkey, which will be used to authenticate the connection and to encrypt data transferred.

The passkey needs to be numbers only (no letters), as you will have to enter it again on your cell phone.

Check your phone after you hit 'Next' and re-enter the passkey when prompted.

Cancel Back Next

5. Tap "Finish" to complete this step.



### Bluetooth Connection Wizard

Partner with a cell phone



Nokia 8910

#### Shortcuts created

Connection shortcut(s) have been created for every supported service your phone offers.

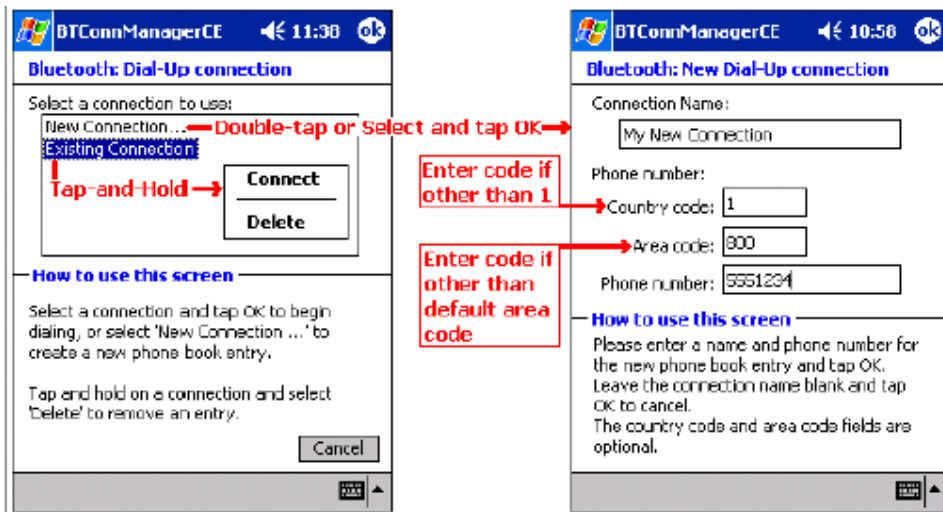
To connect:

From the Bluetooth Manager "My Connections" screen, double-tap the connection. Or tap-and-hold the connection icon and select 'Connect' from the menu.

Cancel Back Finish

## Create a Bluetooth Dial-up connection

1. Create a connection to the device that will provide telephone access.
2. From the Bluetooth Manager, My Connections tab, tap-and-hold the Dial-up Networking connection shortcut, and then select Connect from the pop-up menu.
3. On the first Bluetooth: New Dial-up Connection screen, double-tap New Connection.



4. On the second Bluetooth: New Dial-up Connection screen:
  - a) Enter a name for the connection
  - b) If dialing outside of the default country setting, enter the country code
  - c) If dialing outside of the default area code setting, enter the area code
  - d) Enter the phone number to be dialed.

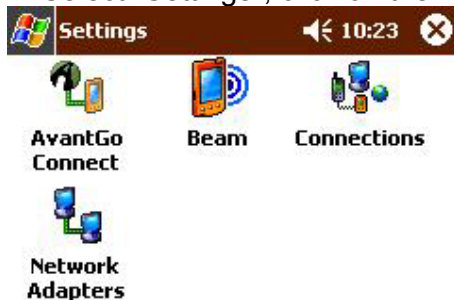
5. Tap OK

Please follow the Dial-Up connection procedures above to complete the Dial-Up settings. Refer to the PocketPC documentation for assistance.

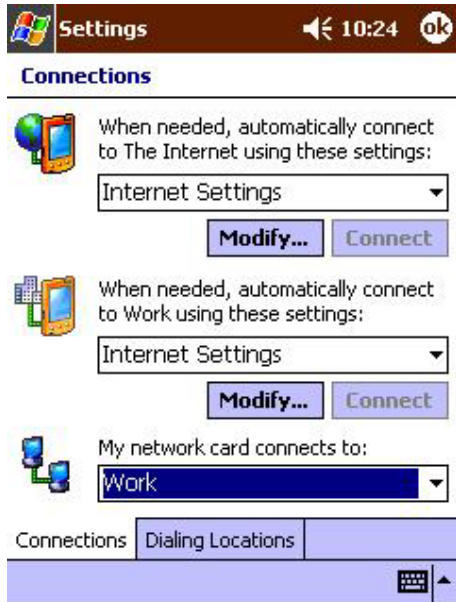
After the connection is active, open a web browser on the PocketPC.

Alternatively, you could set up the connection the traditional way, if the above method did not work for you.

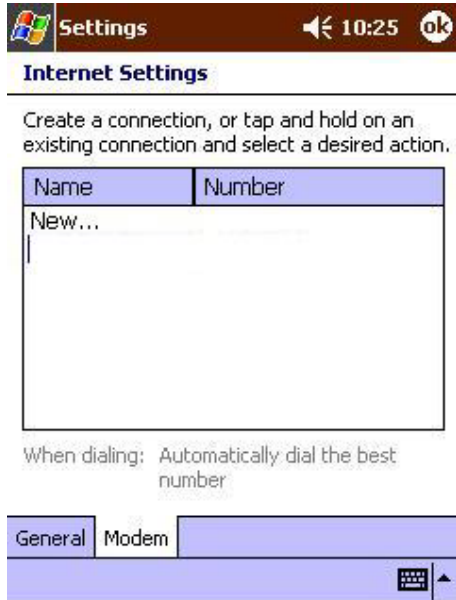
1. Click on "Start" button on the top of the menu bar.
2. Select "Settings", click on the "Connections" tab.



3. Click on the "Connections" icon. On the top "Internet Settings", click "Modify".



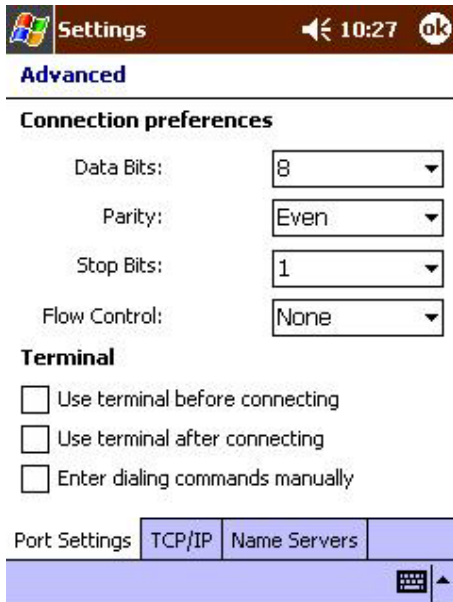
4. Click "New..." to start a new connection.



5. Give the new connection a name, select "Bluetooth Dialup Modem", and set the baud rate at "115200".



6. Click "Advanced...", change the "Parity" to "Even", "Stop Bits" to "1", and "Flow Control" to "None".



7. Click on the "TCP/IP" tab, and make sure both "Use software compression" and "Use IP header compression" checkboxes are selected.





**Advanced**

- Use server-assigned IP address
- Use specific IP address
- Use Slip
- Use software compression
- Use IP header compression



8. Click on the "Name Servers" tab. Some GPRS service may require you to enter the DNS addresses, please check with your GPRS ISP before making the changes. Otherwise, leave the radio button selected at "Use server-assigned addresses" and click "OK".



**Advanced**

- Use server-assigned addresses
- Use specific server address
  - DNS:
  - Alt DNS:
  - WINS:
  - Alt WINS:



9. Click "Next", enter the phone number for your GPRS connection. Then click "Next".

Settings 10:31

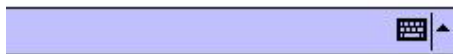
**BT GPRS Connection**

Country code:

Area code:

Phone number:

Cancel Back Next



10. Leave the settings as it is in this page, and click "Finish".

Settings 10:32

**BT GPRS Connection**

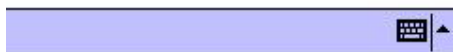
Cancel call if not connected within  seconds

Wait for dial tone before dialing

Wait for credit card tone  seconds

Extra dial-string modem commands:

Cancel Back Finish



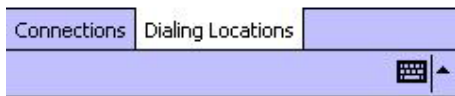
11. Click "OK", and in the Connections page, click on the "Dialing Locations" tab.

a) Change the "Location:" to "Home".

b) Delete the entries in "Area code:" and "Country code:".

c) Select the "Disable call waiting;" checkbox.

d) Enter the phone number of your GPRS service again. Then click on "Dialing Patterns...".



12. Change all entries to "G", assuming you are making a local GPRS phone call. Then click "OK".



13. Now you have set up a GPRS Bluetooth Connection. Click the "Connect" button and click "OK" without entering any user name or password, within a few seconds you should be connected to the Internet.

14. Open "Internet Explorer" and start surfing the net.

## **Serial port setting for WinCE**

The use of a Bluetooth wireless serial port connection is identical to the use of a physical cable serial port connection between two devices.

As with a physical connection, the application that will use the connection must be configured to use the correct serial port.

To determine the COM port assigned to the Bluetooth serial port:

1. From the Today Screen, tap the Bluetooth icon to open the Bluetooth Control Panel.
2. Use the scroll arrows at the bottom-right of the screen to expose the Serial Port tab, and then select the Serial Port tab. The Outbound COM Port is listed in the lower portion of the screen. Configure the application that will use the Bluetooth Serial Port to send data to this port.

## ActiveSync setting for WinCE

1. To establish the ActiveSync connection on a PDA, please tap "ActiveSync via Bluetooth" from the Bluetooth connection wizard, and click "Next".



2. Make sure your computer is capable of accessing your PDA, and determine which "COM" port number ( For example "COM6") is used for incoming Bluetooth connections (refer to ActiveSync setting for Windows section). You will need this information later. Tap "Next" to next step.



3. Make sure your PC side's ActiveSync "Connection Settings" is using the right COM port, click "Next".

## Bluetooth Connection Wizard

ActiveSync via Bluetooth



### Prepare the computer

Step 2 - ActiveSync setup

Open ActiveSync on the computer and select "Connection Settings..." from the "File" menu.

Note: If the "Get Connected" wizard appears, connect your handheld to the computer via the cradle or a cable once and try again.

In the Connection Settings screen, enable "Allow serial cable or infrared connection to this COM port" and select the COM port assigned in Step 1.

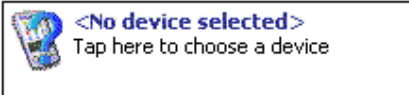
Cancel Back Next

4. Tap screen and choose a device on the list.

## Bluetooth Connection Wizard

ActiveSync via Bluetooth

### Device:



### How to use this screen

Select the computer prepared in the previous steps of the wizard by tapping the selection box above and locating it in the list.

Tap 'Next' to continue or 'Back' to return to the previous screen. To exit this wizard without completing the connection, tap 'Cancel'.

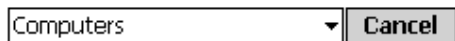
Cancel Back Next

5. Select a device you want to use.



### Bluetooth Browser

Please select a device:



6. Follow the instructions to create a shortcut for the Bluetooth ActiveSync connection.



### Bluetooth Connection Wizard

ActiveSync via Bluetooth



#### Shortcut creation

Create a shortcut for this connection

Connection name:

ActiveSync with 1800T

Use a secure, encrypted connection

#### Ready to connect

You are now ready to start ActiveSync using the device above! Tap 'Finish' to initiate the connection.



### Bluetooth Authentication

Device: 1800T

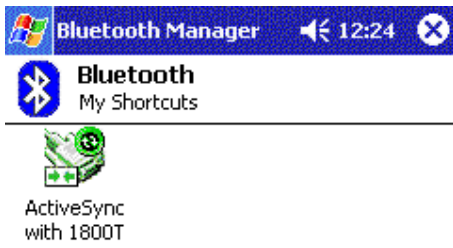
Passkey:

#### How to use this screen

The Bluetooth pairing procedure establishes a secret key that is used in all future connections to authenticate device identity and encrypt data.

Enter your passkey in the field above and tap OK to establish a paired relationship with this device.





7. After the shortcut is created, you can see your device is connected with your computer. You can tap "Active Connections" to check the signal strength.





## Hosting a Personal Area Network

To host a personal network, go to the Bluetooth Manager, choose New > Connect > Join a personal network > Next. The following screen will be shown:



Choose Host a personal network and tap Next. You will then be shown the following screen, which allows you to "bring in" one or more guests, if desired. This step is optional, since guests can join later on as long as the personal network is active (more details in the following section).



Adding devices to a personal network.

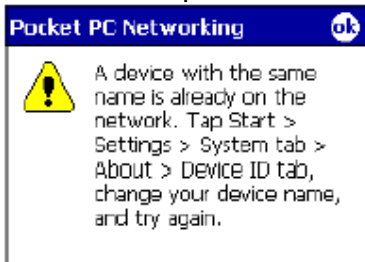
Joining a Personal Area Network

BTW-CE makes it easy to join an existing personal network, hosted by another Bluetooth device (PocketPC, desktop, etc.) From the Bluetooth Manager, choose New > Connect > Join a personal network > Next, but choose Join a personal network this time. The Bluetooth Browser will be shown for you to select the device that is hosting the personal

network. After selecting the host, choose Next. A connection will then be established between your PocketPC and the host over the personal network.

At this moment, you might be prompted to enter IP network settings ; if this is the case, choose "Use server-assigned IP address" and tap OK.

The following warning may also be shown to you. As instructed, change the name of your device and tap OK.

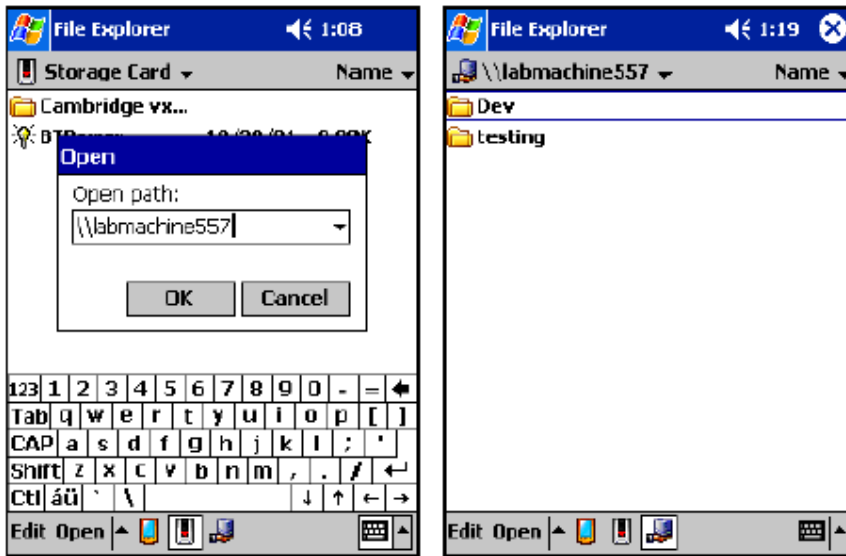


Since the network is established via Bluetooth, the network host's service availability, authorization and/or authentication security settings are in effect and may prevent you from joining the network.



PAN network settings.

After joining the personal network, you can use any application that requires an underlying network connection. For instance, you can view a remote folder via the File Explorer by choosing Open and entering a remote, accessible device path.



Browsing files on a remote device (via the PocketPC File Explorer) after joining a personal network.



## Chapter5

### How to pair with my mobile phone?

#### How to pair with Nokia 6310

- (1). To activate Bluetooth on your Nokia 6310, press "Menu", select "Bluetooth" and "On".
- (2). From your notebook or PDA, begin a Bluetooth device search. A mobile phone icon will show up in the right pane of the Bluetooth software window with the name of your Nokia 6310.
- (3). Double click the mobile phone icon to discover the services it provides. You should see COM, Dial-up networking, Fax, or more, depending on the model of your Nokia mobile phone.
- (4). From your Nokia 6310, select "Search for Bluetooth accessories", the phone starts searching for devices and accessories.
- (5). Scroll to the device you want and press "Select".
- (6). If devices have not been paired, the user is asked to enter the passcode of the desired device. (The Nokia Bluetooth Passcode is a 1 to 16 character-long numeric code of your choice)
- (7). A Passkey dialog box will pop up on your notebook or PDA, type in the same passkey you've entered on your mobile to complete pairing.
- (8). If pairing was successful, a "Paired with \*\*\*\*" message box will pop up on your mobile phone. You should also see a tick on the side of the mobile phone icon in your notebook or PDA.
- (9). You are now able to use the services of your mobile phone.

## How to pair with Nokia 8910

- (1). To activate Bluetooth on your Nokia 8910, press "Menu", select "Bluetooth" and "On".
  - (2). From your notebook or PDA, begin a Bluetooth device search for your Nokia 8910.
  - (3). A mobile phone icon will show up in the right pane of the Bluetooth software window with the name of your Nokia 8910.
  - (4). Double click the mobile phone icon to discover the services it provides. You should see COM, Dial-up networking, Fax, or more, depending on the model of your Nokia mobile phone.
  - (5). From your notebook or PDA, double click on the service you wish to use and it will trigger a dialog box "Connect with \*\*\*?" on your mobile phone. (where \*\*\* is the name of your notebook or PDA)
  - (6). Push the "Accept" button, and enter a passcode, e.g. 55 and push the OK button. (The Nokia Bluetooth Passcode is a 1 to 16 character-long numeric code of your choice)
  - (7). A Passkey dialog box will pop up on your notebook or PDA, type in the same passkey you've entered on your mobile.
  - (8). If pairing was successful, a "Paired with \*\*\*\*" message box will pop up on your mobile phone. You should also see a tick on the side of the mobile phone icon in your notebook or PDA.
  - (9). You are now able to use the services of your mobile phone.
- For further Bluetooth functions on your Nokia mobile phone, please refer to Nokia's User's Guide

## How to pair with Ericsson T39m

- (1). On your mobile phone, push the "Menu" button, scroll to "Extras", "Yes", "Bluetooth", "Yes", "Discoverable", "Yes" to make your Ericsson mobile phone detectable by other Bluetooth devices.
  - (2). "Discoverable for 3 minutes" message box will pop up.
  - (3). From your notebook or PDA, begin a Bluetooth device search for your Ericsson T39.
  - (4). A mobile phone icon will show up in the right pane of the Bluetooth software window with the name of your Ericsson T39.
  - (5). Double click the mobile phone to discover the services it provides. You should see Serial Port, Dial-up Networking, Fax, and more, depending on the model of your mobile phone.
  - (6). From your mobile phone, scroll to "Extras", "Yes", "Bluetooth", "Yes", "Discover", "Yes". A list of discovered devices appears.
  - (7). You can now choose the Bluetooth device you wish to connect to, then select "Add to paired", the mobile phone will prompt you for a "Passkey". Type in a passkey, e.g. 55 and push "Yes".
  - (8). A Passkey dialog box will pop up on your notebook or PDA, type in the same passkey you've entered on your mobile. A "Pairing Succeeded" message box will pop up.
  - (9). On your mobile phone, enter a name for your notebook or PDA, or push the Yes button to accept the default Name tag.
  - (10). If the pairing process is successful, you should see a tick on the side of the mobile phone icon on your notebook or PDA.
  - (11). You should now be able to use the services of your mobile phone.
- For further Bluetooth functions on your Ericsson mobile phone, please refer to Ericsson's User's Guide

## How to pair with Ericsson T68

- (1). On your mobile phone, scroll to "Connect", "Yes", "Bluetooth", "Yes", "Discoverable", "Yes" to make your Ericsson mobile phone detectable by other Bluetooth devices.
  - (2). "Discoverable for 3 minutes" message box will pop up.
  - (3). From your notebook or PDA, begin a Bluetooth device search for your Ericsson T68.
  - (4). A mobile phone icon will show up in the right pane of the Bluetooth software window with the name of your Ericsson T68.
  - (5). Double click the mobile phone to discover the services it provides. You should see Serial Port, Dial-up Networking, Fax, and more, depending on the model of your mobile phone.
  - (6). From your mobile phone, scroll to "Connect", "Yes", "Bluetooth", "Yes", "Discover", "Yes". A list of discovered devices appears.
  - (7). You can now choose the Bluetooth device you wish to connect to, then select "Add to paired", the mobile phone will prompt you for a "Passkey". Type in a passkey, e.g. 55 and push "Yes".
  - (8). A Passkey dialog box will pop up on your notebook or PDA, type in the same passkey you've entered on your mobile. A "Pairing Succeeded" message box will pop up.
  - (9). On your mobile phone, enter a name for your notebook or PDA, or push the Yes button to accept the default Name tag.
  - (10). If the pairing process is successful, you should see a tick on the side of the mobile phone icon on your notebook or PDA.
  - (11). You should now be able to use the services of your mobile phone.
- For further Bluetooth functions on your Ericsson mobile phone, please refer to Ericsson's User's Guide

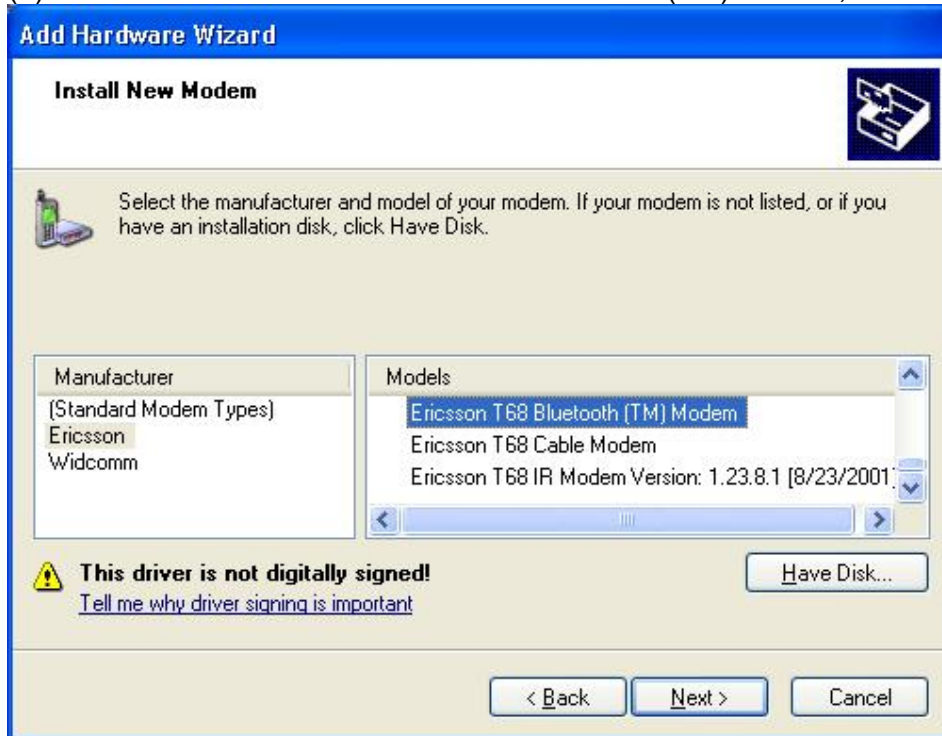
## How to sync with Ericsson T68 via XTNDConnectPC

(A) Assign COM port

(1) After you have installed Microsoft Outlook and XTNDConnectPC\_R2A04\_English, you would need to install a new modem to communicate with your mobile phone.

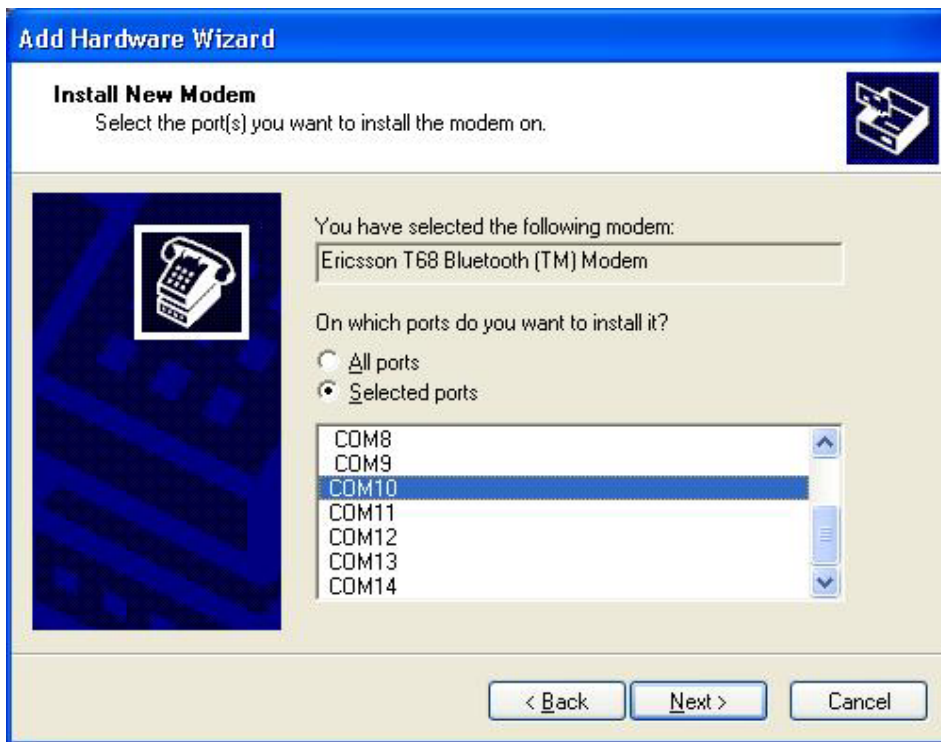
(2) Go into Start->Settings->Control Panel->Phone and Modem Options, under "Modems" tab, click on "Add", tick the "Do not detect my modem, I will choose from list" and click "Next".

(3) Choose Ericsson and Ericsson T68 Bluetooth (TM) Modem, then click "Next".

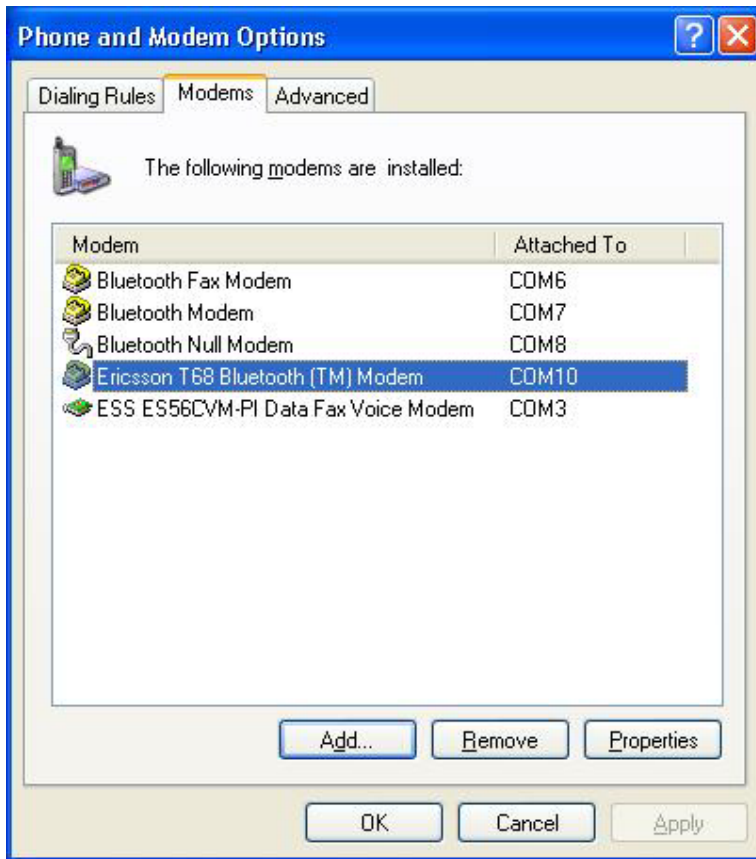


(4) Select and assign a COM port (e.g COM10) to the newly added Modem. Click "Next".



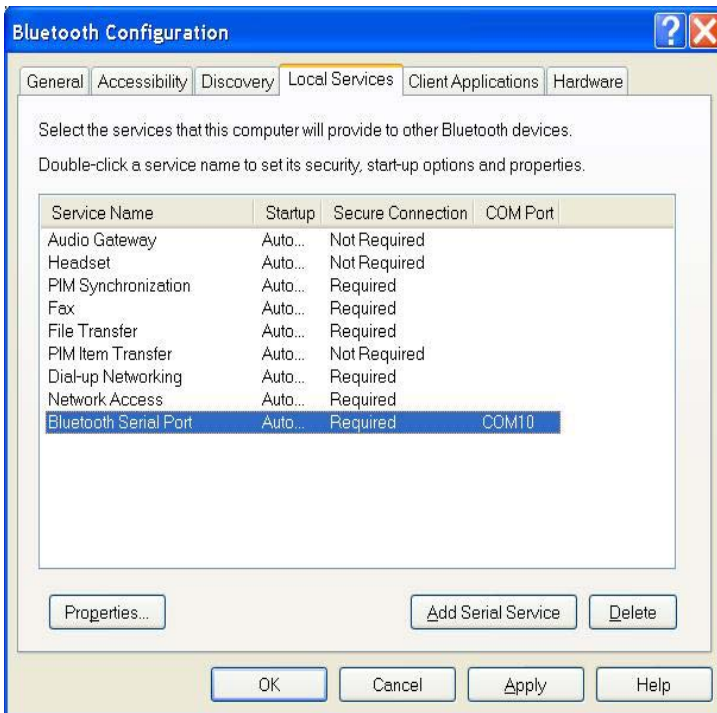


(5) Click "OK" to finish the set up process. Remember the port number as you will need it later.

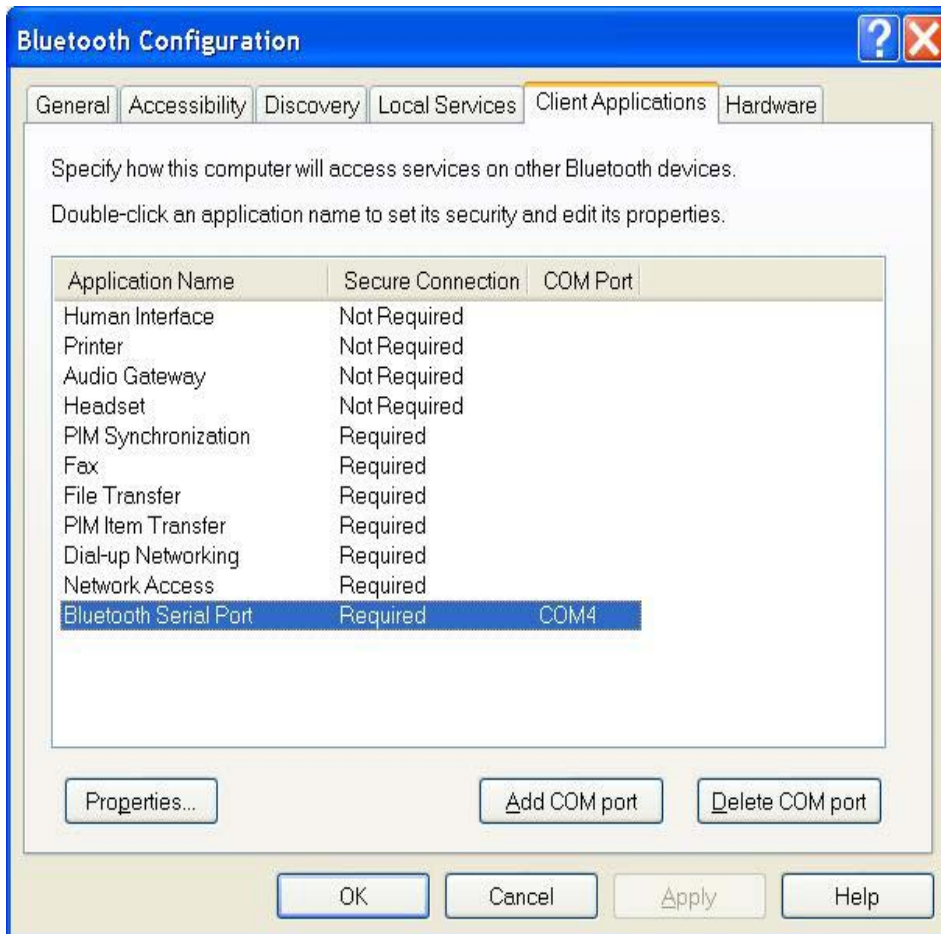


(B) Configure Bluetooth software

- (1) Check the COM ports used by the Bluetooth software are correct.
- (2) Go to Start->Settings->Control Panel->Bluetooth Configuration, on the "Local Services" tab, the COM port should be the one you have just assigned to your Ericsson phone (e.g. COM10).
- (3) To change the assigned COM port, double click the "Bluetooth Serial Port" and choose the correct one from the "COM Port:" drop down list.

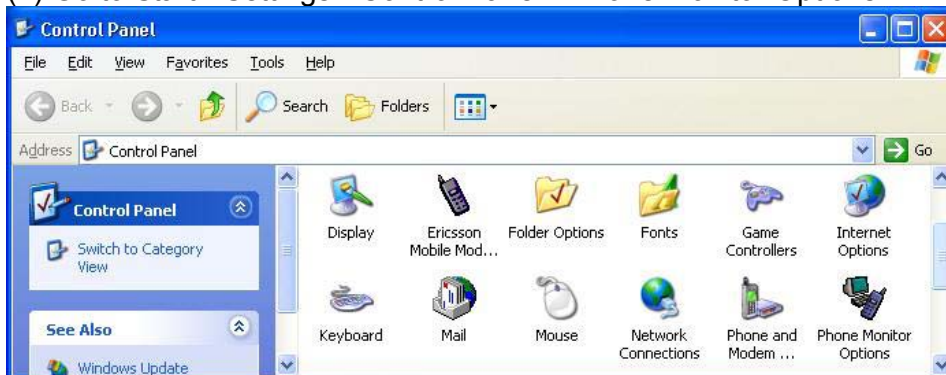


- (4) Check the COM port used by "Bluetooth Serial Port" in the "Client Applications" tab (e.g. COM4), remember this COM port too.
- (5) To change the assigned COM port, double click the "Bluetooth Serial Port" and choose the correct one from the "COM Port:" drop down list.

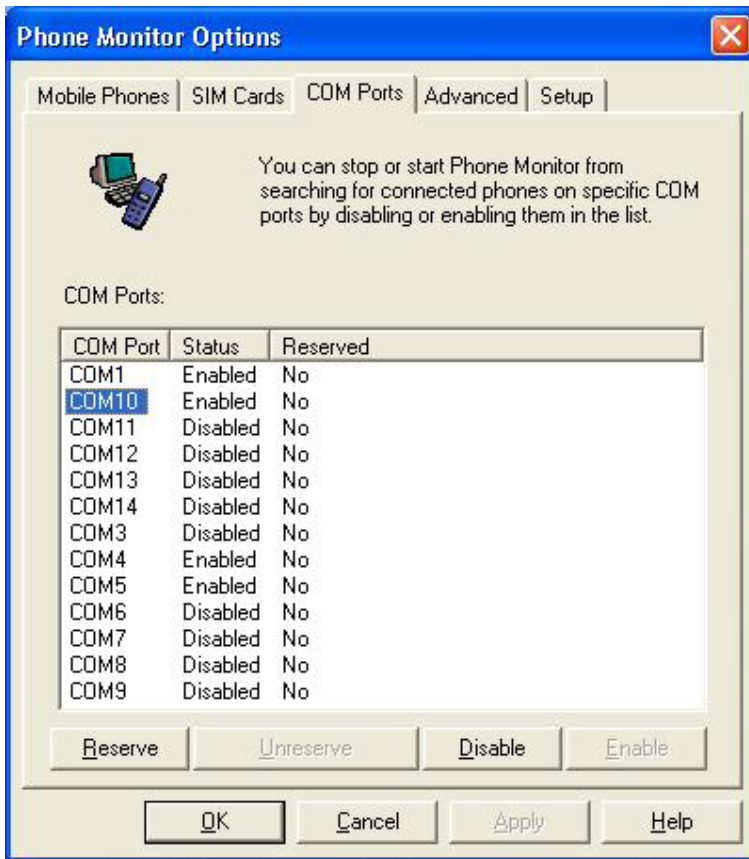


### (C) Configure Ericsson's Phone Monitor

(1) Go to Start->Settings->Control Panel->Phone Monitor Options.

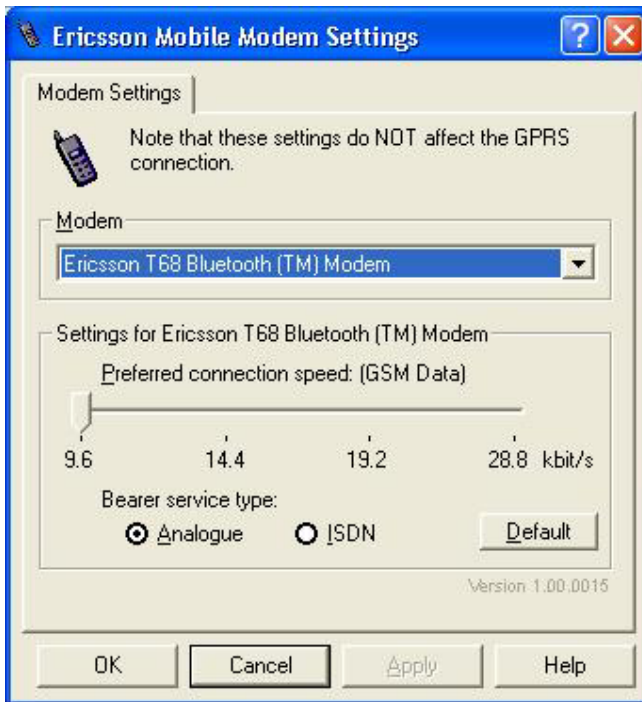


(2) Enable the COM port you have just assigned the Ericsson Bluetooth Modem (e.g. COM10). This COM port is the one that you want to use to communicate with your phone. Make sure the COM port used by "Bluetooth Serial Port" in the "Client Applications" tab (e.g. COM4) is enabled as well. Click "OK" when finished.



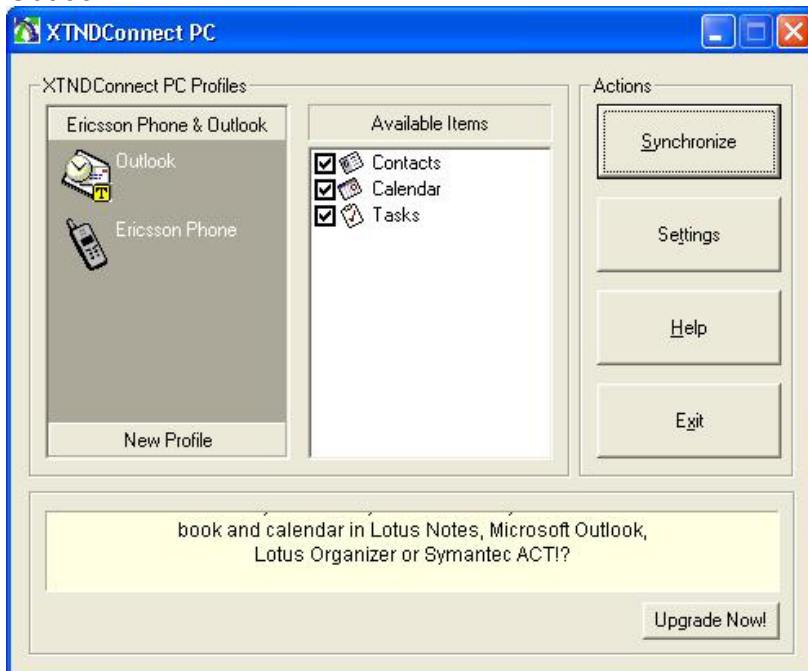
(D) Configure Ericsson's Mobile Modem Settings

(1) Go to "Start->Settings->Control Panel->Ericsson Mobile Modem Settings", "Modem Settings" tab and make sure the "Modem" dropdown list has the correct modem highlighted.

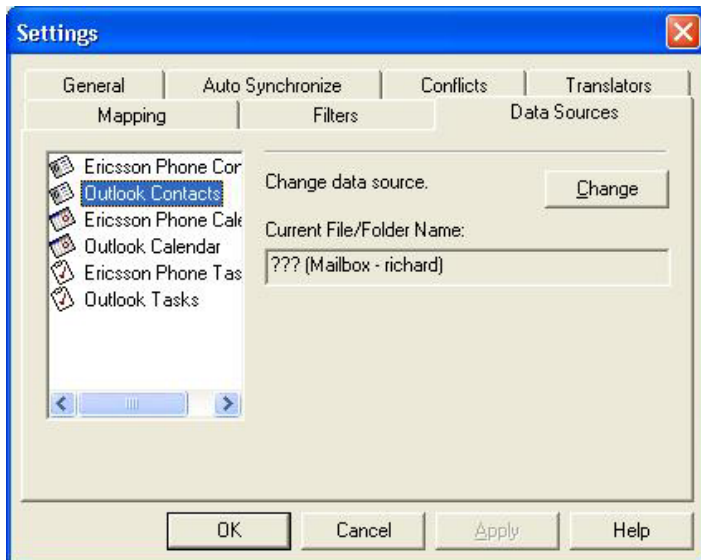


(E) Configure Ericsson's XTNDConnectPC

(1) Go to Start->Programs->XTNDConnectPC->Synchronize Ericsson Phone with Outlook.



(2) Click on "Settings", "Data Sources" tab and assign data sources to "Outlook Contacts", "Outlook Calendar", and "Outlook Tasks". Then click "OK".



(2) With all the set up completed, reboot your system, the Phone Monitor should prompt you to enter some more information.



(3) Just follow the Wizard and when the set up process is completed, you should be able to synchronize your Ericsson T68 with your system.



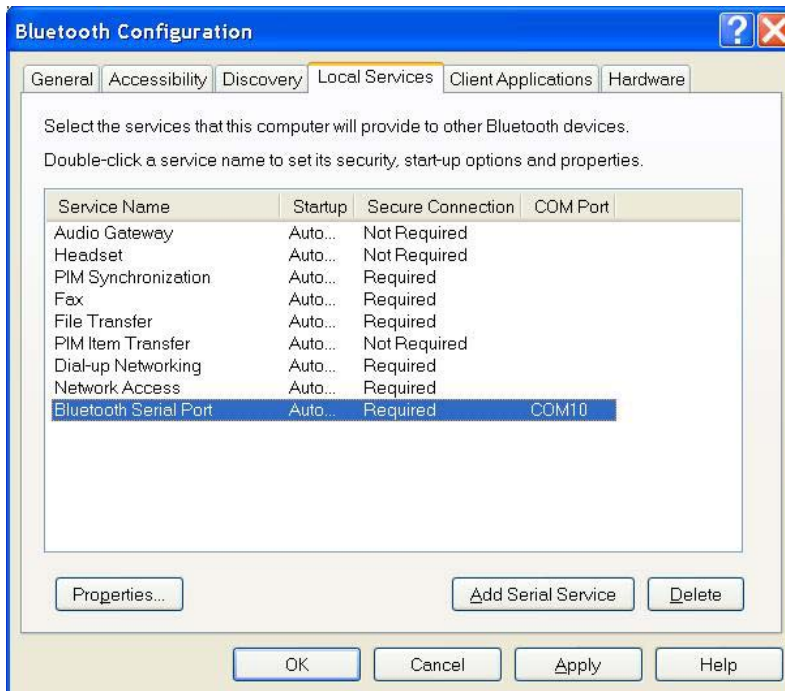


## How to sync with Nokia 7650 via Nokia PC Suite for 7650

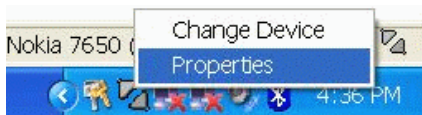
**Note:** Please make sure you are using Nokia PC Suite for 7650 and not other versions of PC Suite. You can download the program from [www.nokia.com/cda/1/0,1080,2015,00.html](http://www.nokia.com/cda/1/0,1080,2015,00.html)

(1) Install Nokia PC Suite for 7650.

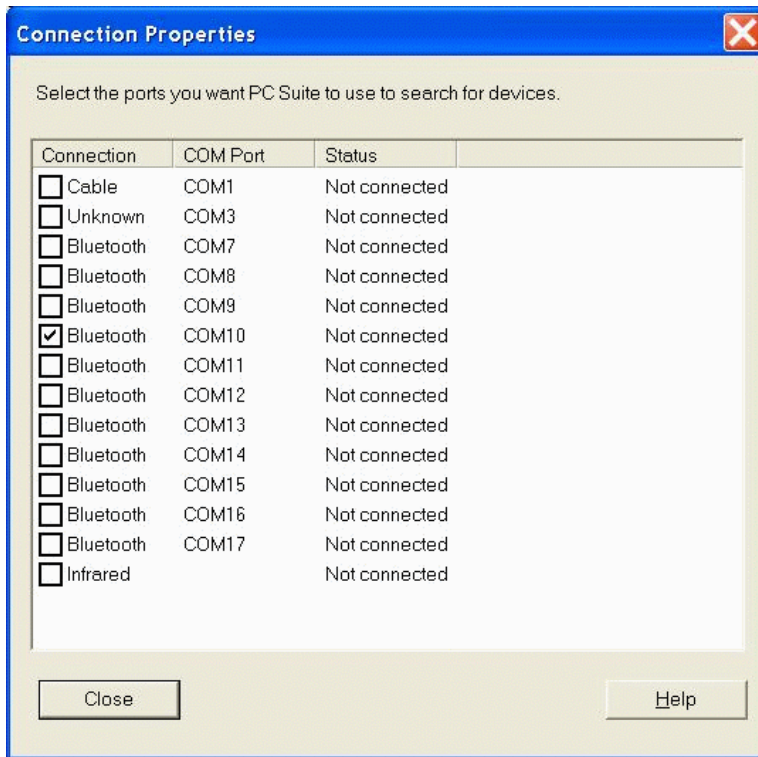
(2) Start up Bluetooth software, note the COM port used by your system (check the "Bluetooth Serial Port" under "Local Services" tab in "Bluetooth Configuration, e.g. COM10).



(3) Right click mRouter on the task bar and select Properties.



(4) Tick the COM port from step (2) then click "Close". If you are still unsure of which one to select, just tick every Bluetooth COM ports first.

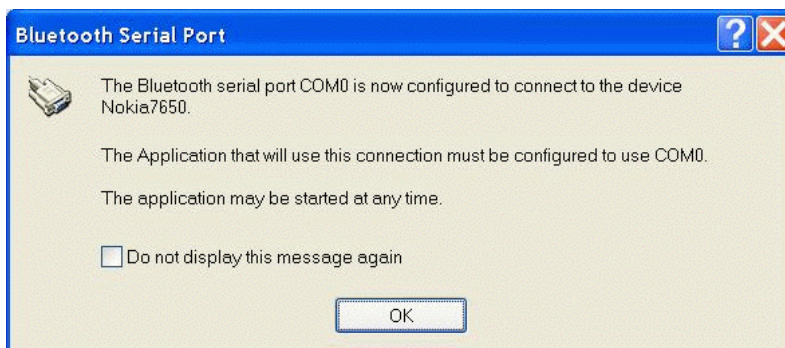


(5) Launch "PC Suite for Nokia 7650" from Start->Programs->PC Suite for Nokia 7650->PC Suite for Nokia 7650.

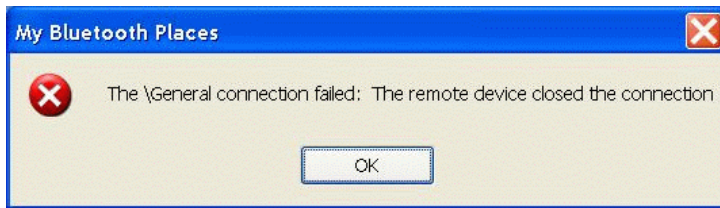
(5) Switch to the Bluetooth software, double click the "Bluetooth Serial Port On Nokia 7650" icon to establish serial connection with 7650.

(6) Key in the same passkey on both of your system and Nokia 7650 to complete the pairing process.

(7) Click "OK" when the following dialog box appears.



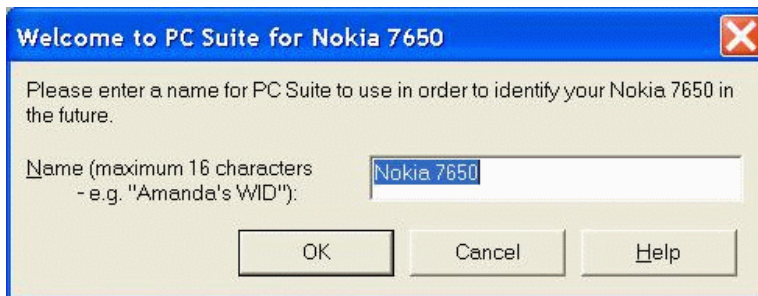
(8) Ignore the error message below and click "OK".



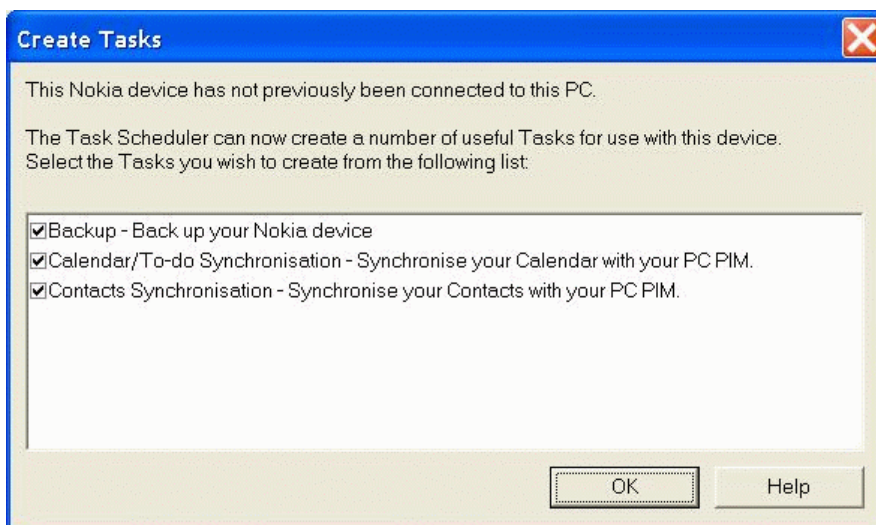
(9) "PC Suite for Nokia 7650" will now take over. Click "OK" when the dialog box below appears.



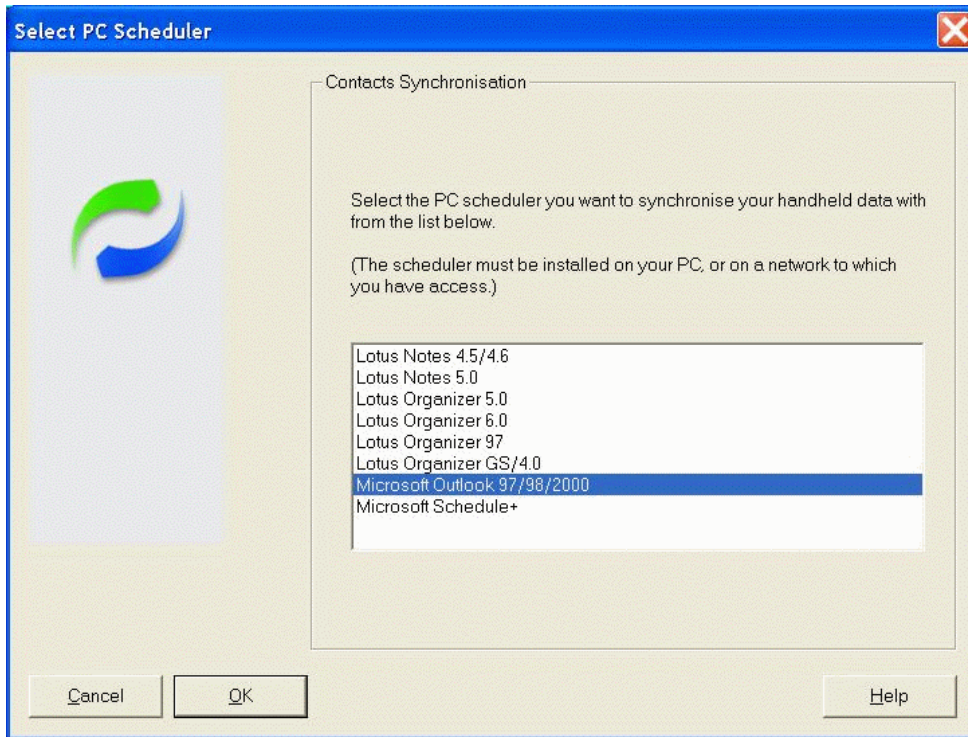
(10) Click "OK" when the dialog box below appears.



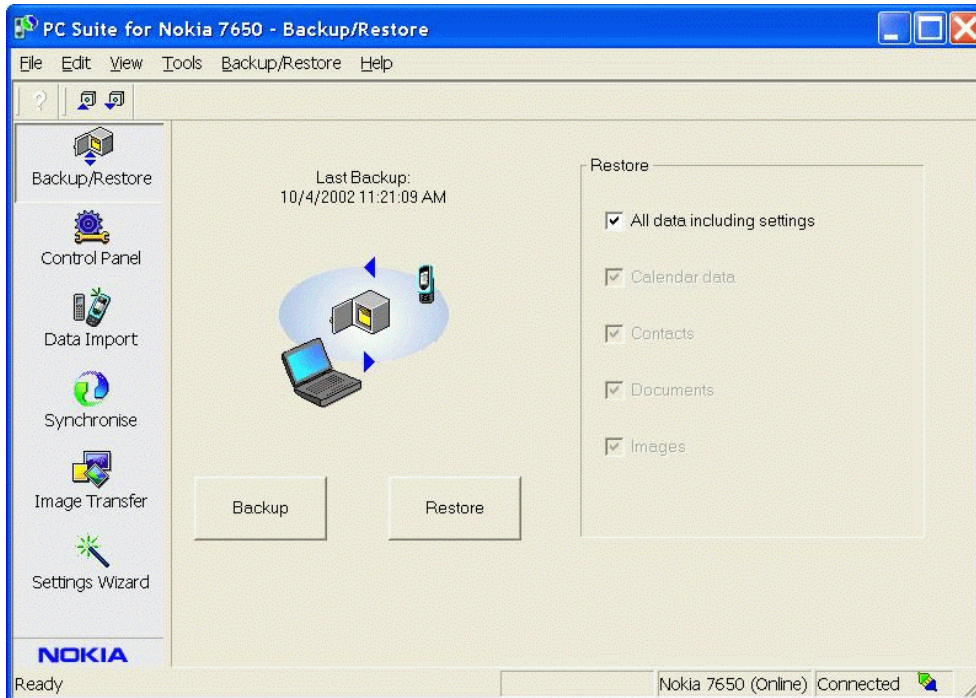
(10) Select the functions you wish to use with Nokia PC Suite.



(11) Select the program you wish to Synchronise with your system, in our case we use Microsoft Outlook 2000.

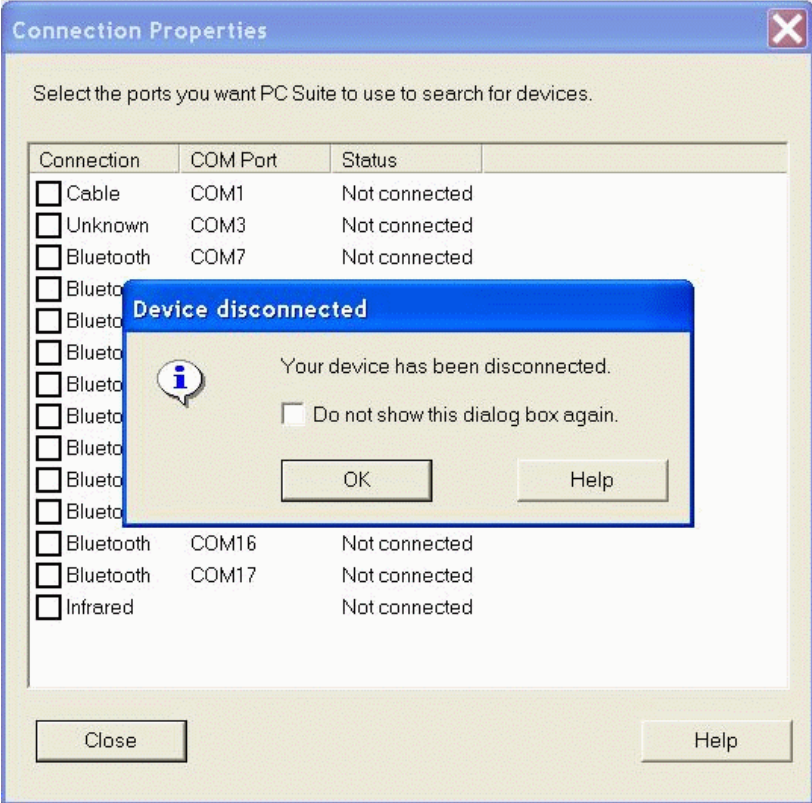


(9) Once connected, you should see the Connected icon on the right bottom corner.



(10) Now you are ready to configure, Synchronize your Nokia 7650 with your system.

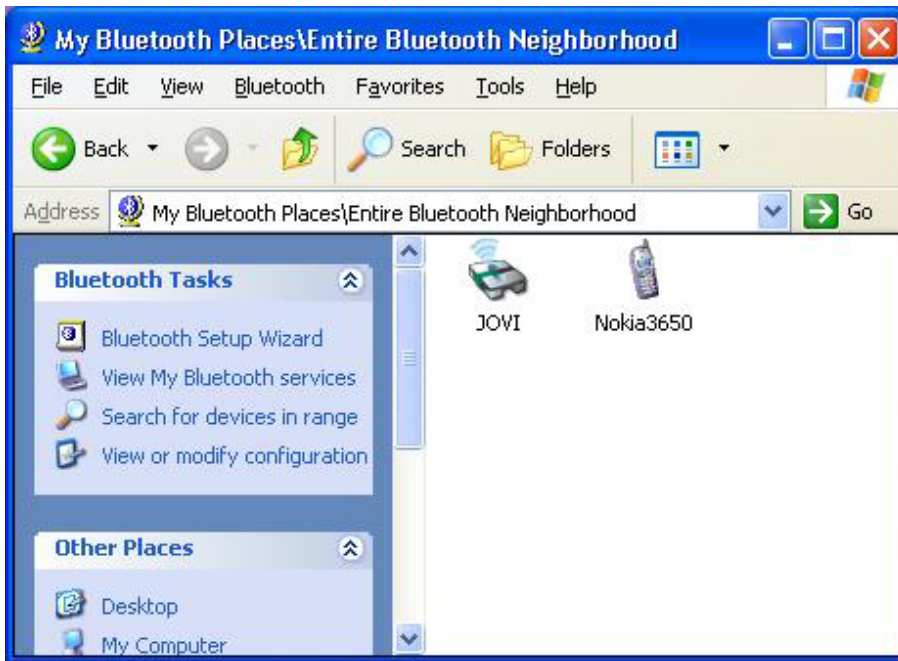
(11) To disconnect, uncheck the COM port in **"Connection Properties"**.



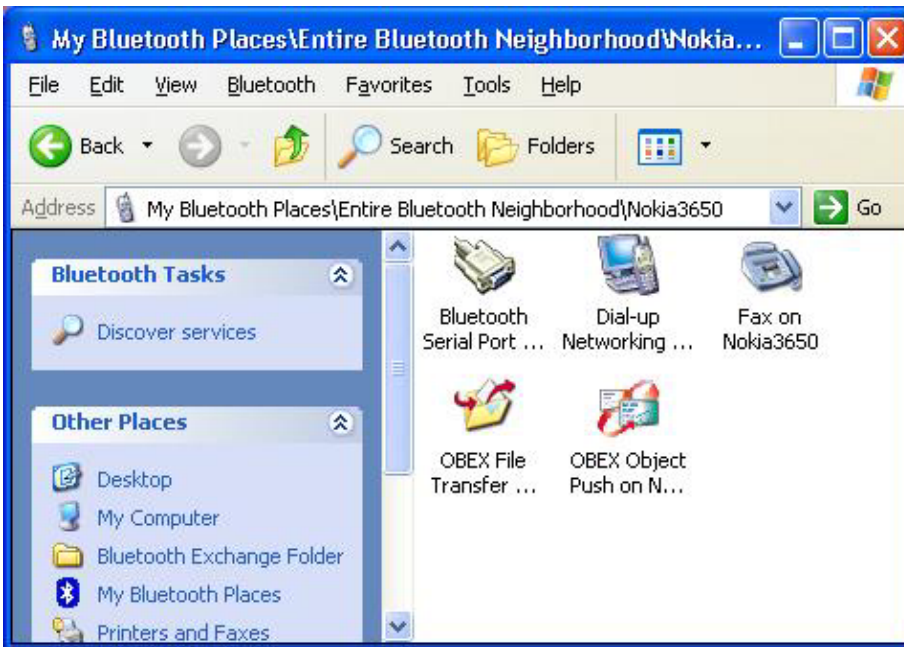
## How to establish Bluetooth connection with Nokia PC Suite for Nokia 3650

Please install Bluetooth software and Nokia PC Suite for Nokia 3650 before proceeding.

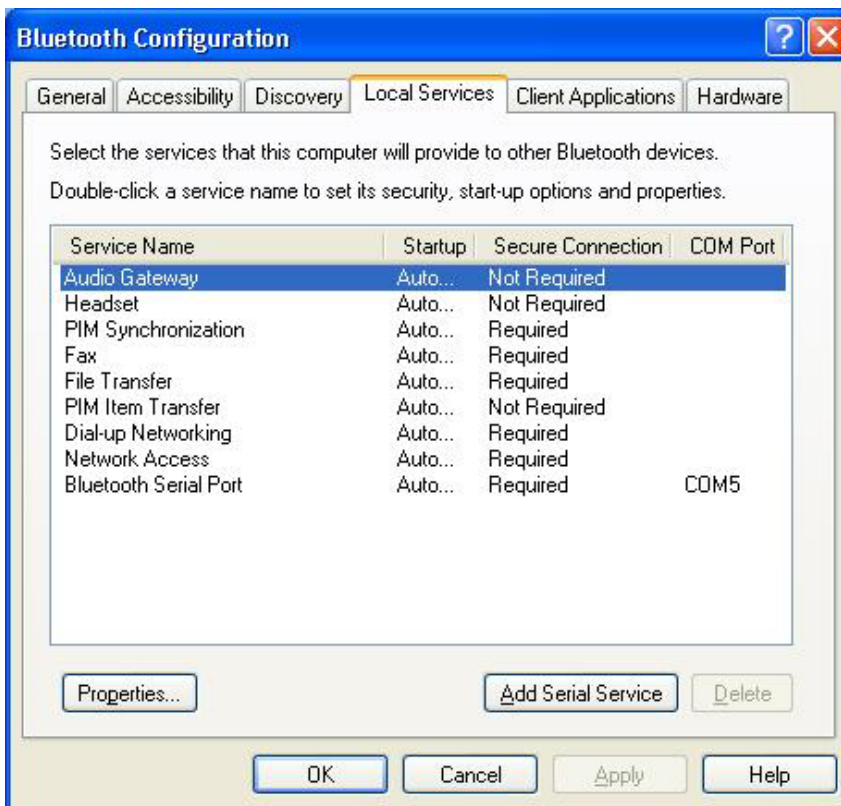
(1) Launch Bluetooth software program, click "Search for devices in range" in the left pane of "My Bluetooth Places" to find your Nokia 3650.



(2) Double click your Nokia 3650 to find the services it provides.



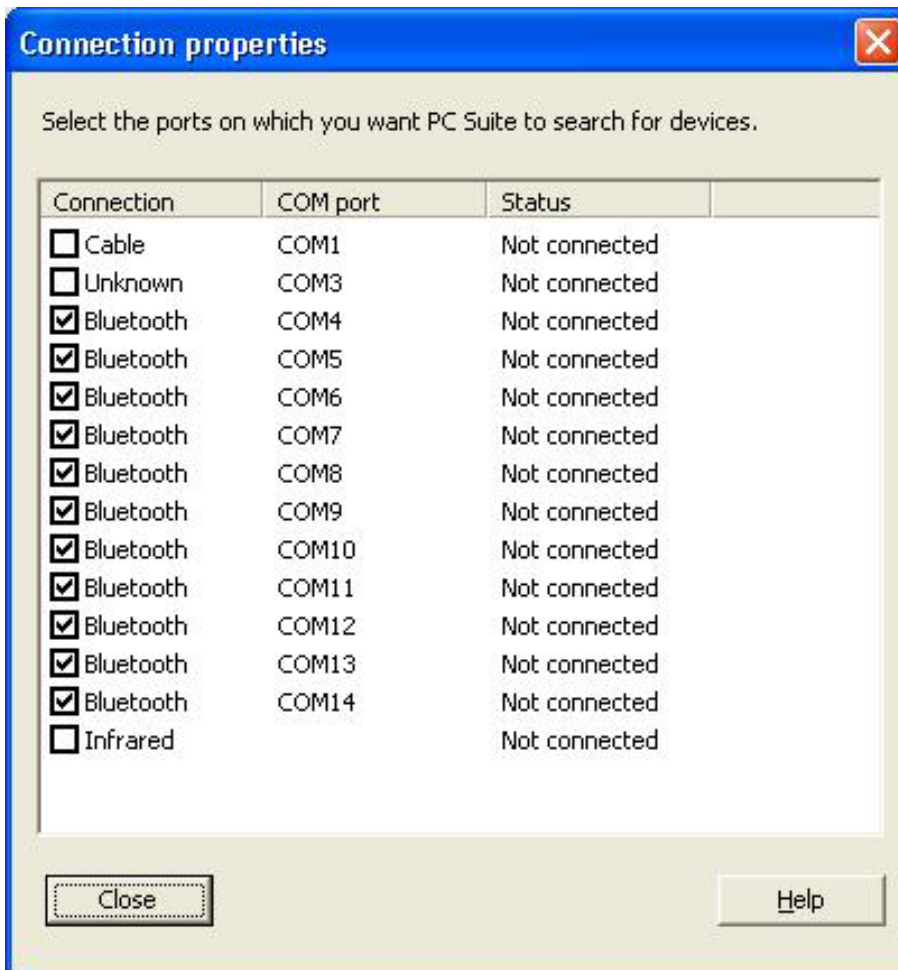
(3) Before proceeding, double check the Bluetooth Serial Port in use by the Bluetooth software by clicking Bluetooth-> Advanced Configuration on the menu bar in the "My Bluetooth Places" window. In this case, COM5 is being used as the Bluetooth Serial Port.



(4) On the task bar right click the mRouter icon and select "Properties".

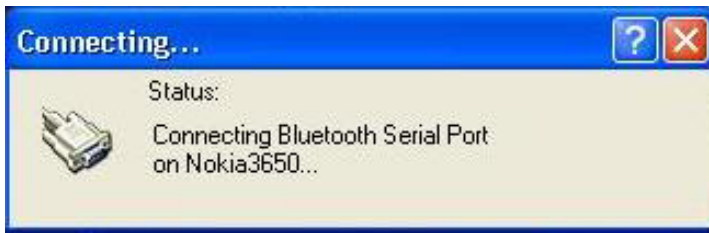


(5) Select COM5 as the port for PC Suite. If you're not sure select all ports as below.

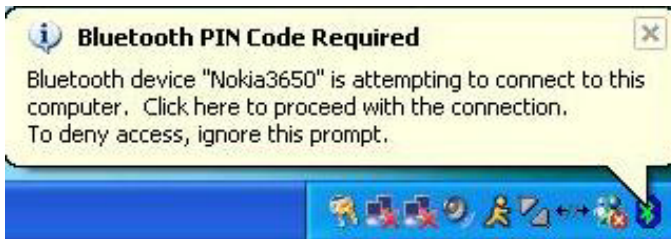


(6) Double click the "Bluetooth Serial Port on Nokia 3650" icon in "My Bluetooth Places" window to initiate a connection. Press "Yes" on your Nokia 3650 to accept the connection request from your system when the following window pops up.





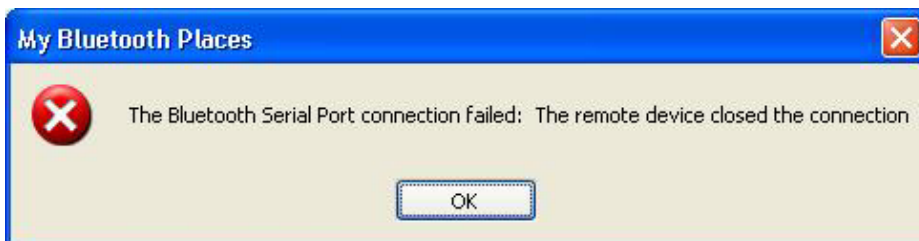
(7) Click the balloon and type in a PIN Code as required. Key-in the same PIN Code on your Nokia 3650.



(7) Click "OK" when the window below pops up.



(8) Ignore the error message below and click "OK" to continue.



(9) Check "Always allow this device to access this service" and click "OK" to continue.



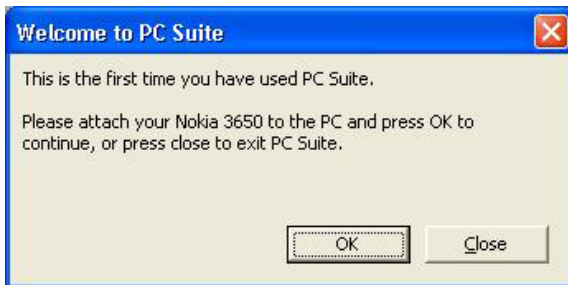
(10) Nokia PC Suite will now take over the connecting process.



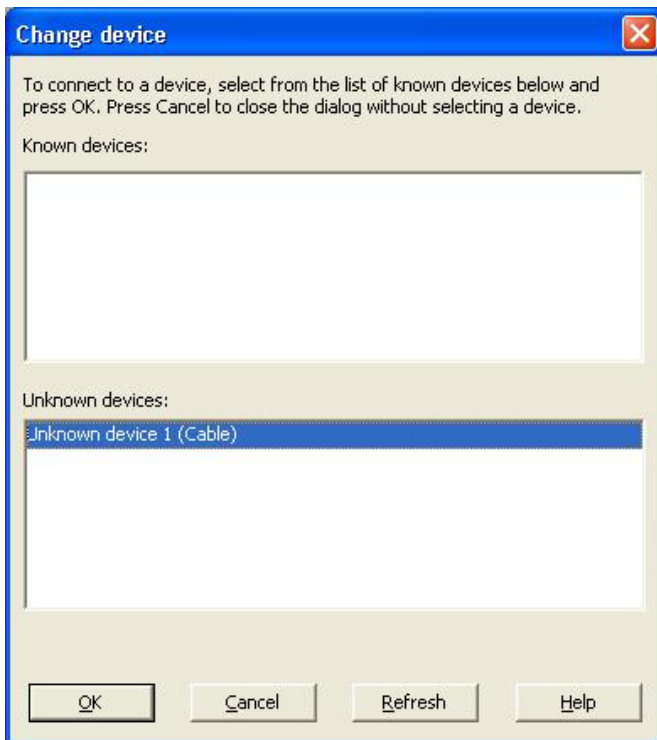
(11) Notice the change of icon once the connection is established.



(12) Launch Nokia PC Suite for 3650 by clicking the Start button-> PC Suite for Nokia 3650 -> PC Suite for Nokia 3650. The following window will pop up, click "OK" to continue.



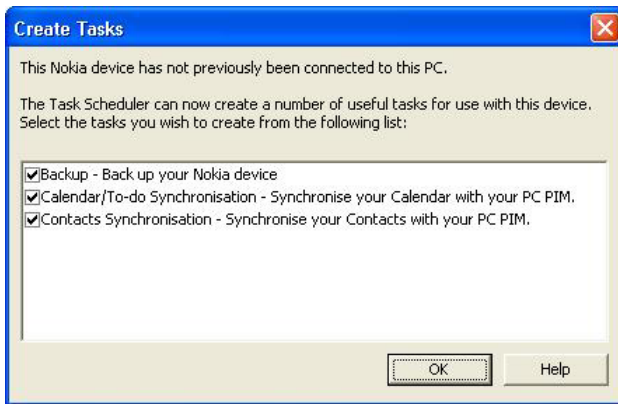
(13) Click "OK" to continue.



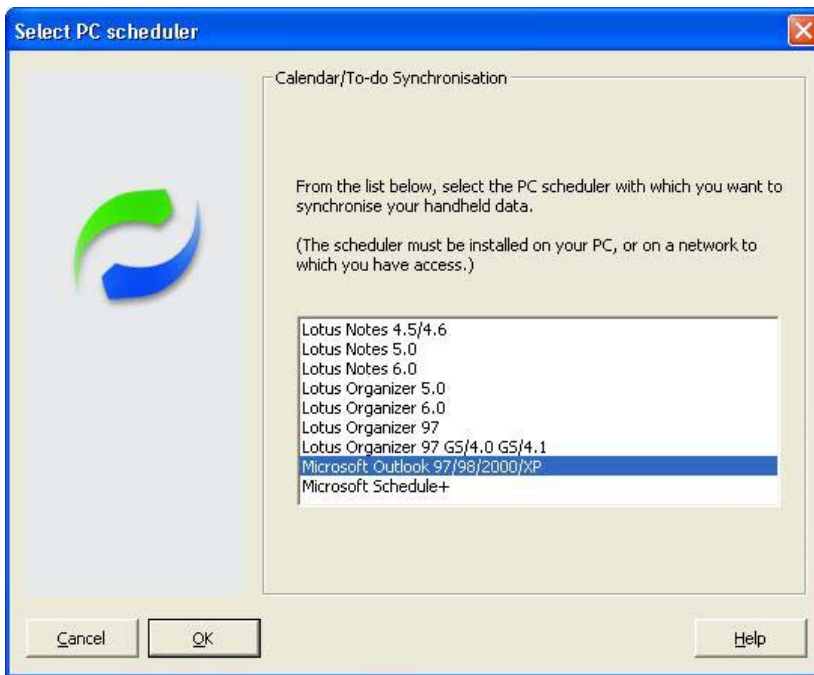
(14) Type the name of your preference, otherwise click "OK" to continue,



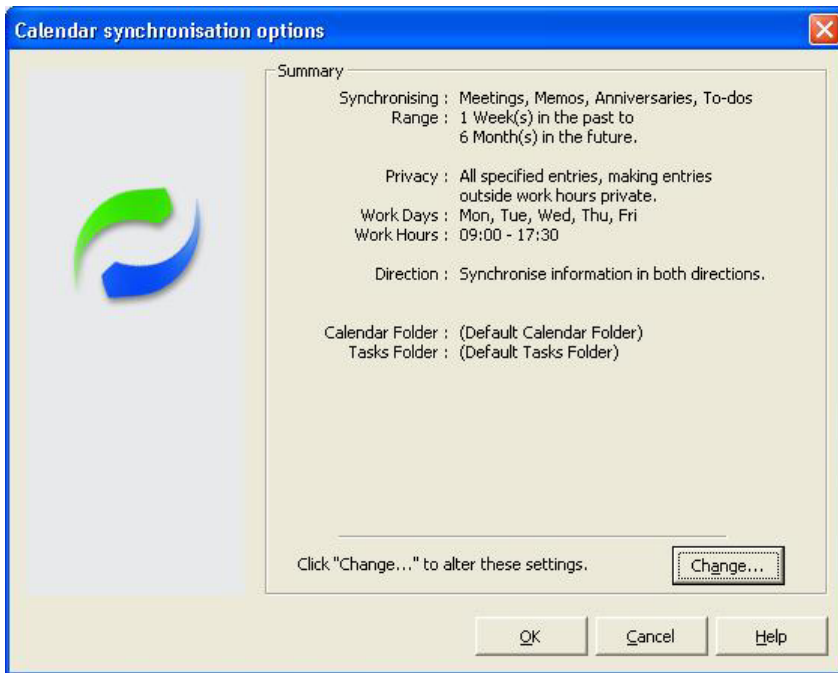
(15) Click "OK" to continue.



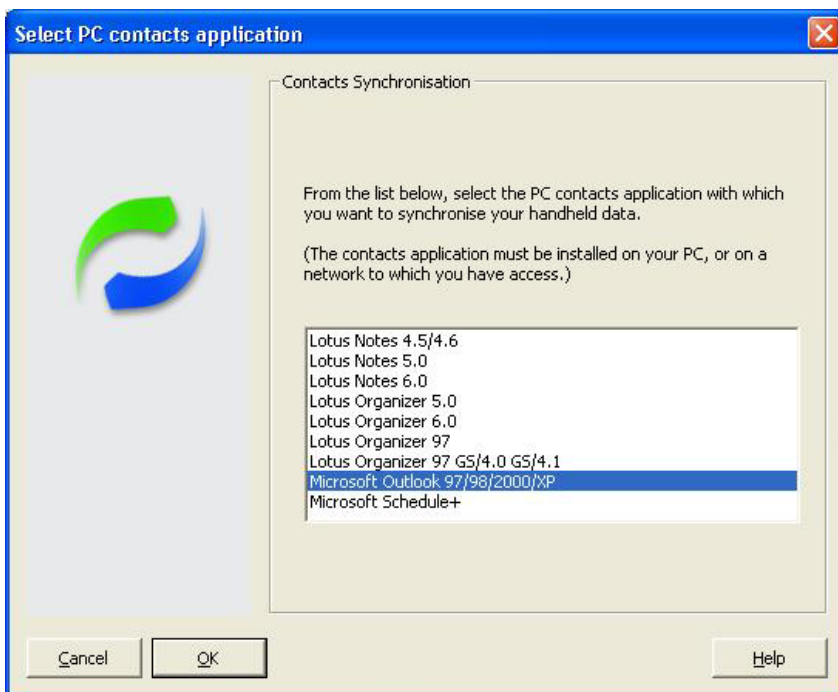
(16) Select the PC scheduler of your choice for Calendar synchronization and click "OK" to continue.



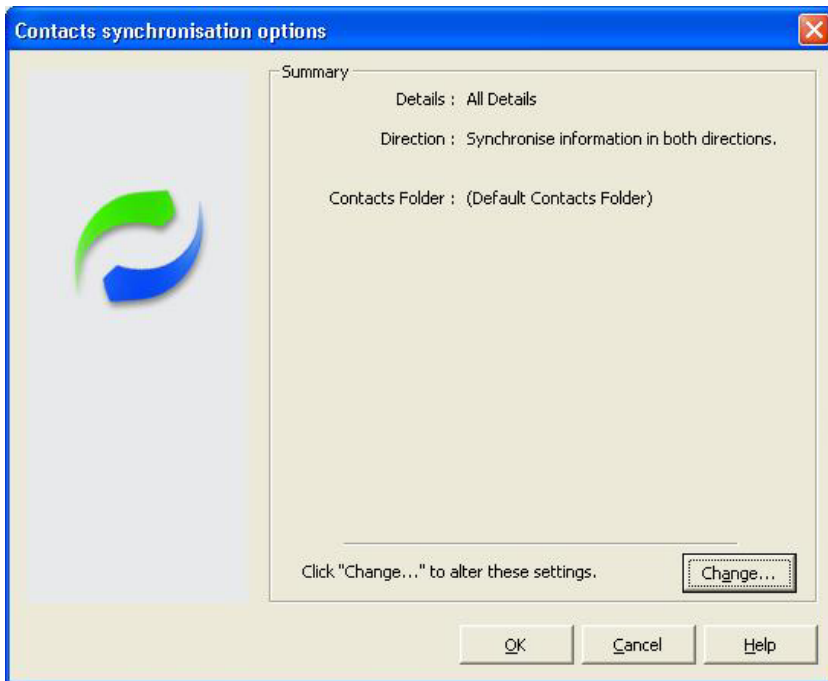
(17) Click "OK" to continue.



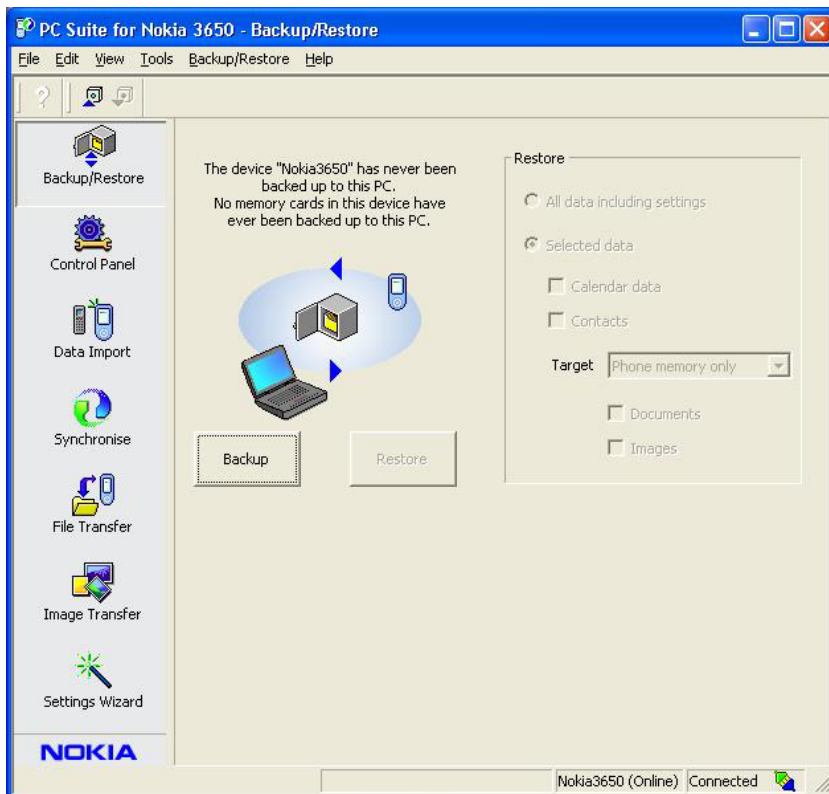
(18) Select the PC scheduler of your choice for Contacts synchronization and click "OK" to continue.



(19) Click "OK" to continue.



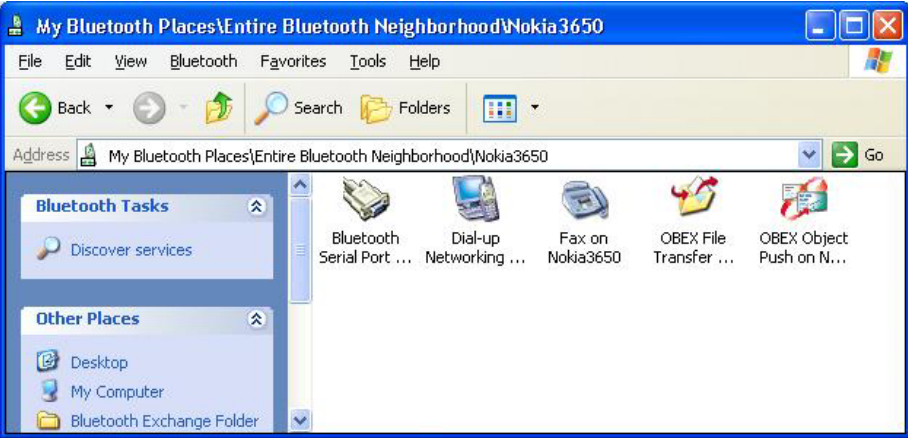
(20) Now you should be able to utilize Nokia PC Suite for 3650.



(21) Please note for some reason the "File Transfer" and "Image Transfer" function in Nokia PC Suite does not seem to work.

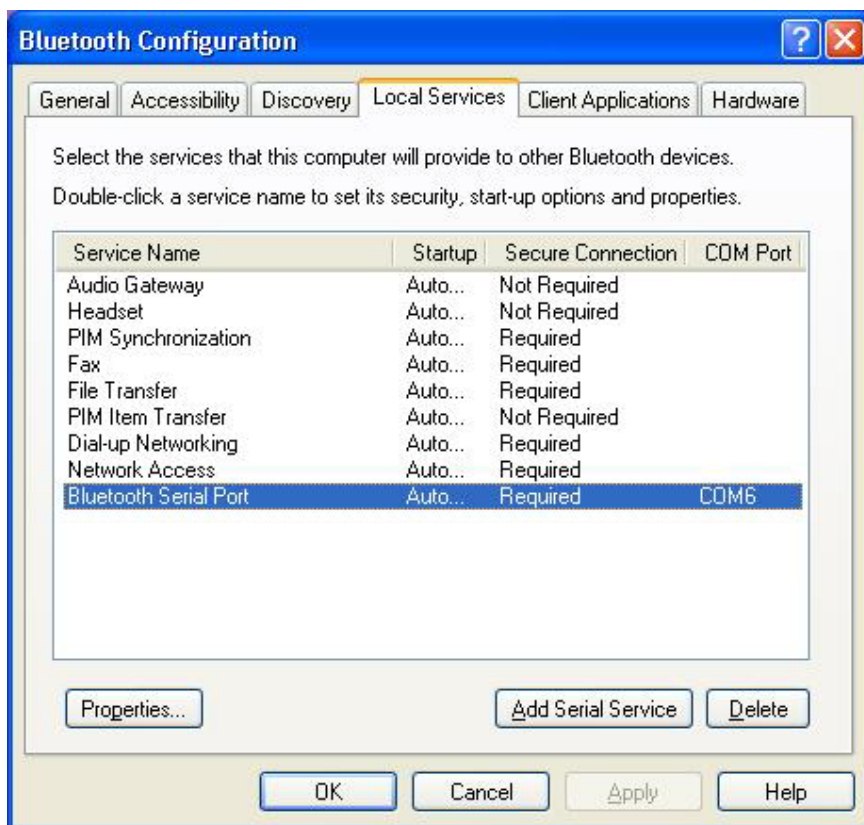


(22) You may have to use the "OBEX File Transfer on Nokia 3650" in "My Bluetooth Places" window to transfer files to your Nokia 3650.



## How to connect to Ericsson P800 via serial port

1. Enable the Bluetooth function on your Ericsson P800. Please refer to your P800 user manual if you're uncertain of how to do so.
2. Make sure both the Bluetooth software and Sony Ericsson's PCSuiteForP800 are installed.
3. Check the inbound Bluetooth Serial Port used by your system in Bluetooth (on menu bar)-> Advanced Configurations-> Local Services->Bluetooth Serial Port. (e.g. COM6 in this case)



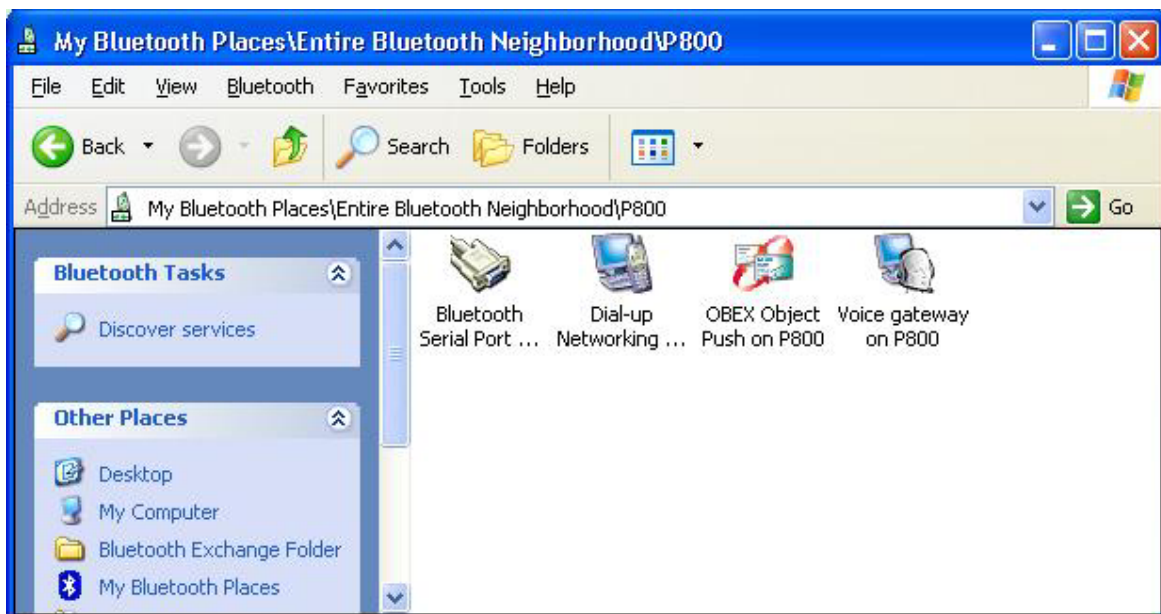
4. Double click the Phone Connection Link icon (double arrow) on the taskbar to bring out the following window, and tick the COM port used in step 3. We do recommend, however, to tick all the COM ports listed to make the process easier.







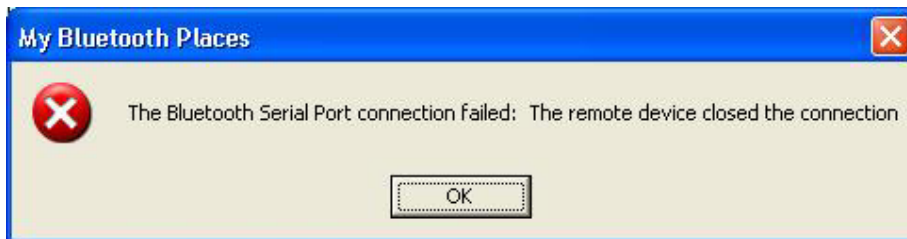
5. Double click the Bluetooth Serial Port icon in My Bluetooth Places of your P800.



6. The following dialog box will appear, ignore it and click OK to continue.



7. The following dialog box will appear, ignore it and click OK to continue.



8. When the balloon appears, click it to accept the request.



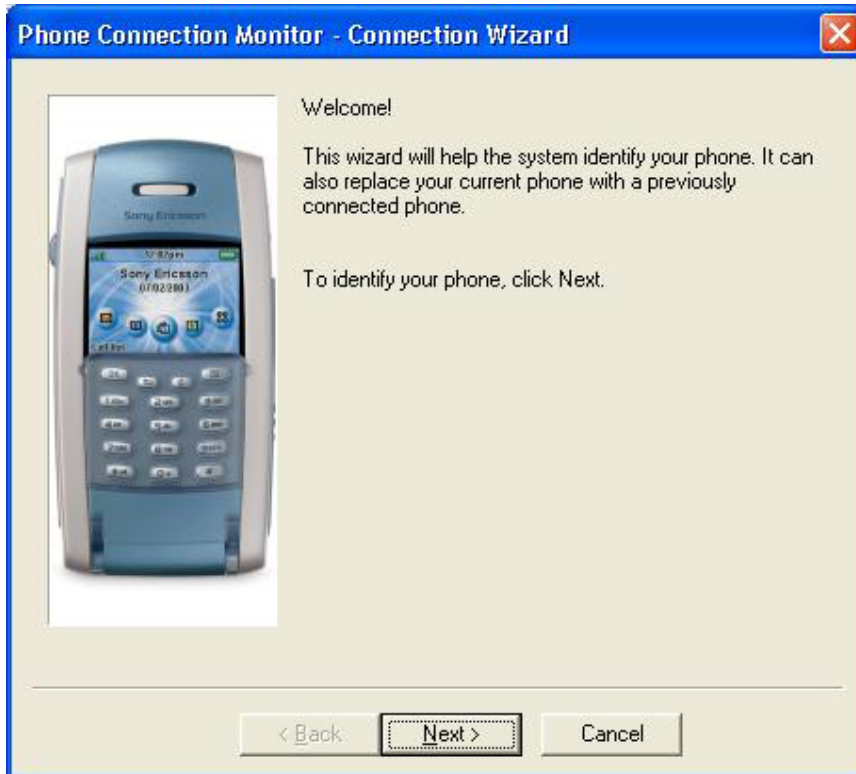
9. The following dialog box will appear, click OK to continue.



10. Your system and P800 is now connected.



11. The following dialog box will appear. Click Next to continue.



12. Click Next to continue.



13. Click Next to continue.

