

1.4

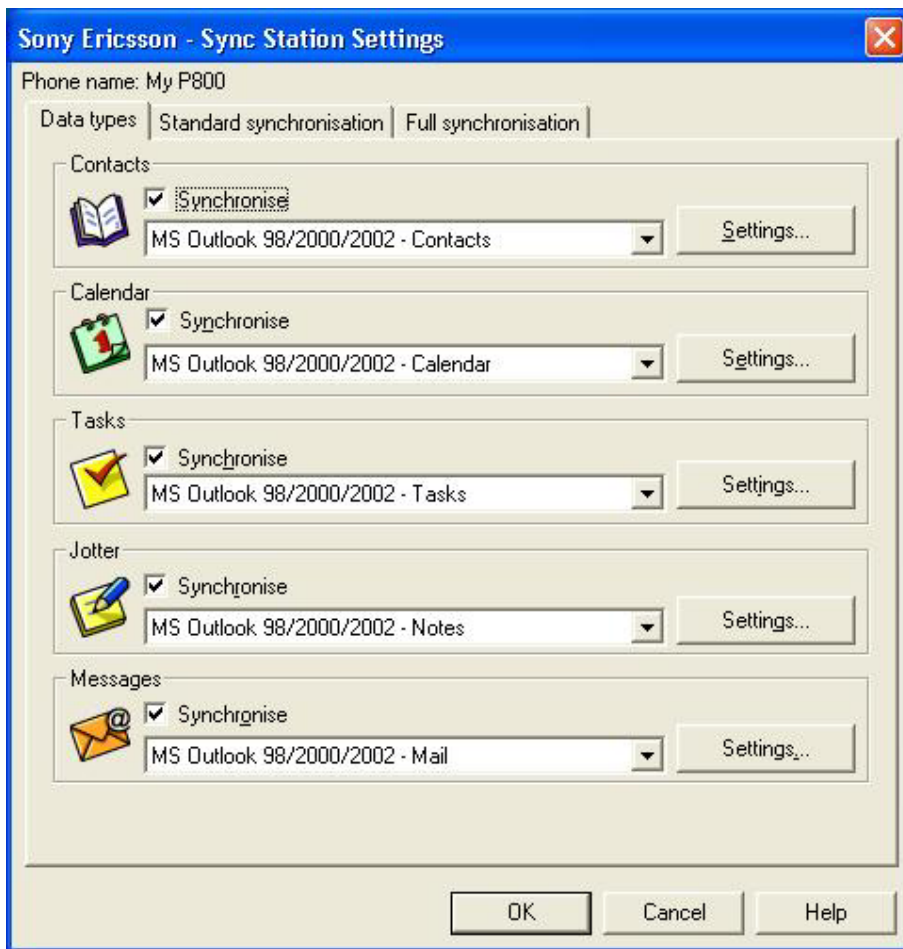
14. Click Finish to continue.



15. The following dialog box will appear. Click OK to continue.



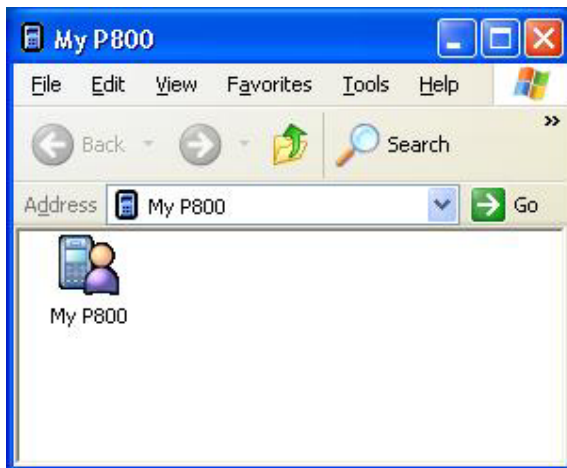
16. Select the program you wish to synchronize with and click OK to continue.



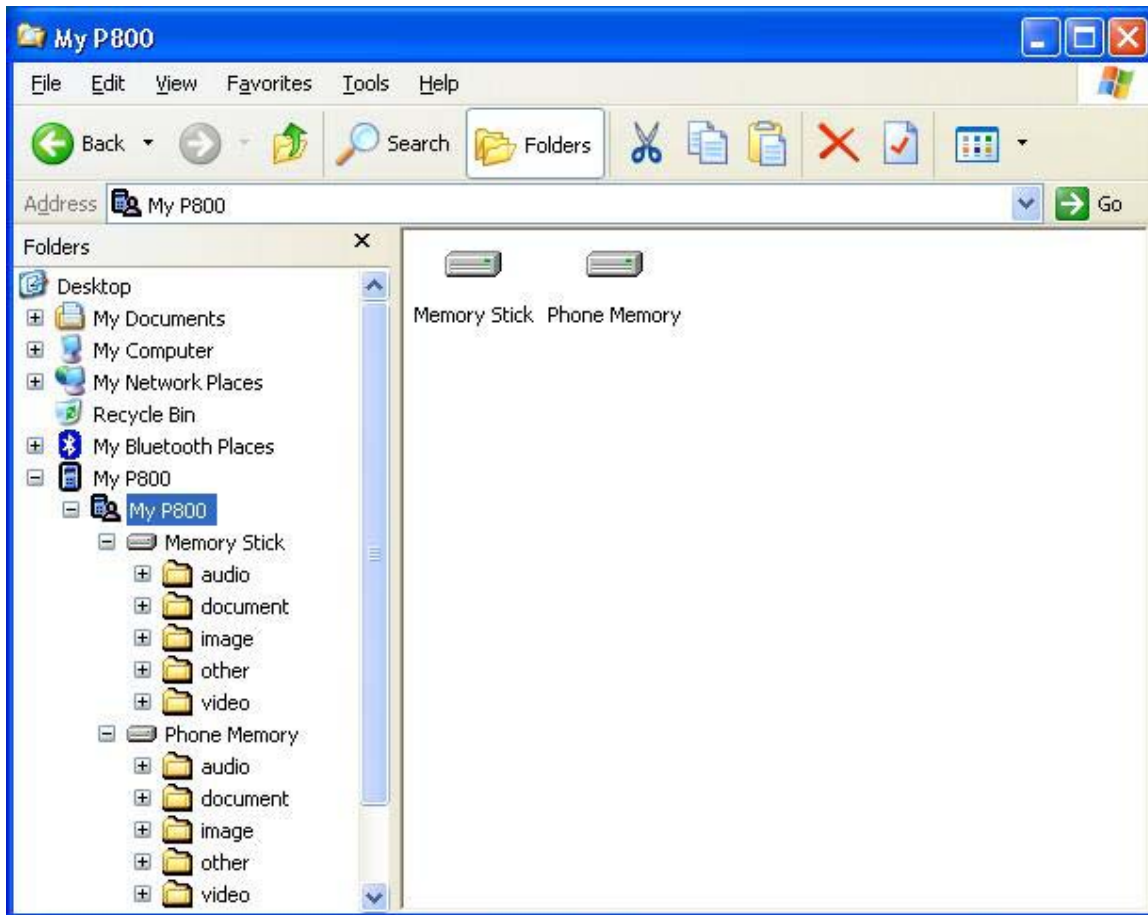
17. The program will start synchronizing your P800 and your system.



18. Launch My P800 on the Desktop.

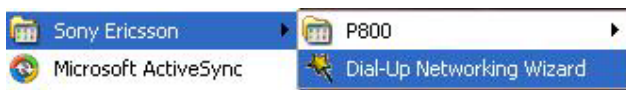


19. You can now access the Memory Stick or the Phone Memory of your P800.

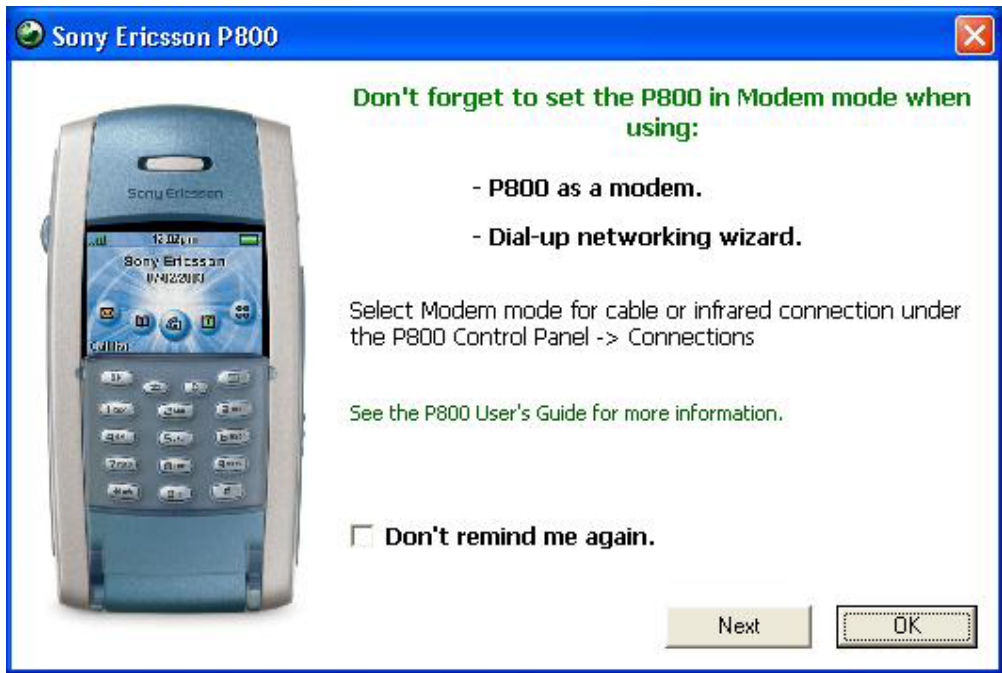


Bluetooth Dial-up via P800 to Internet

1. Click Start button->Programs->Sony Ericsson->Dial-Up Networking Wizard.



2. When the following dialog box appears, move over to your P800, go to Control Panel->Connections->cable, and select "Modem". Then click Next to continue.

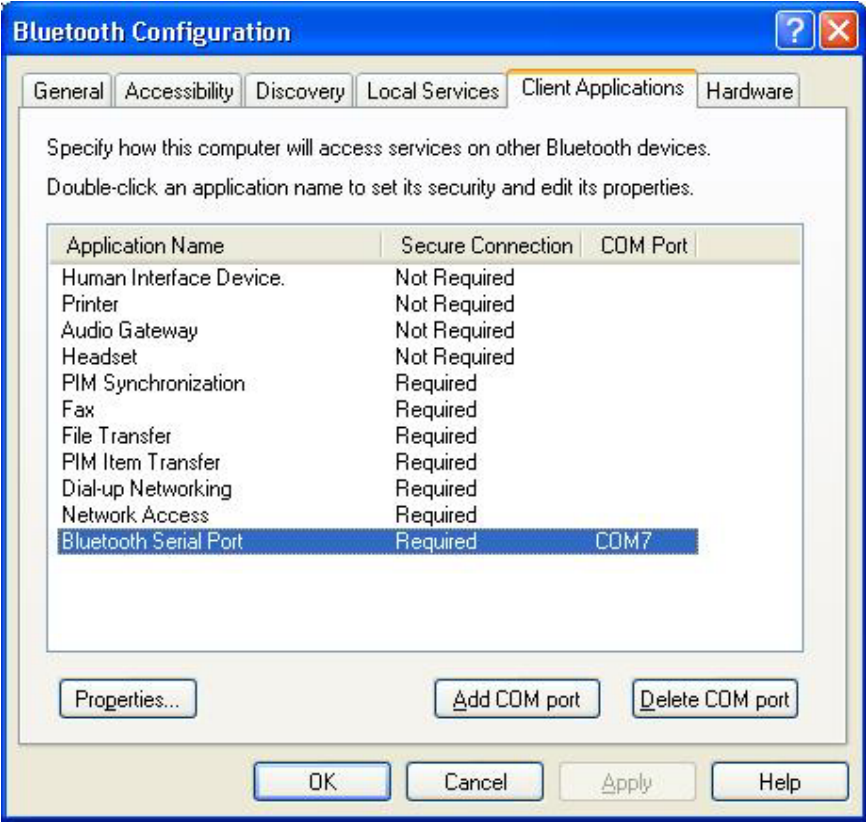


3. When the following dialog box appears, please do steps 4 to 6 before click Back then OK to continue to step 7.

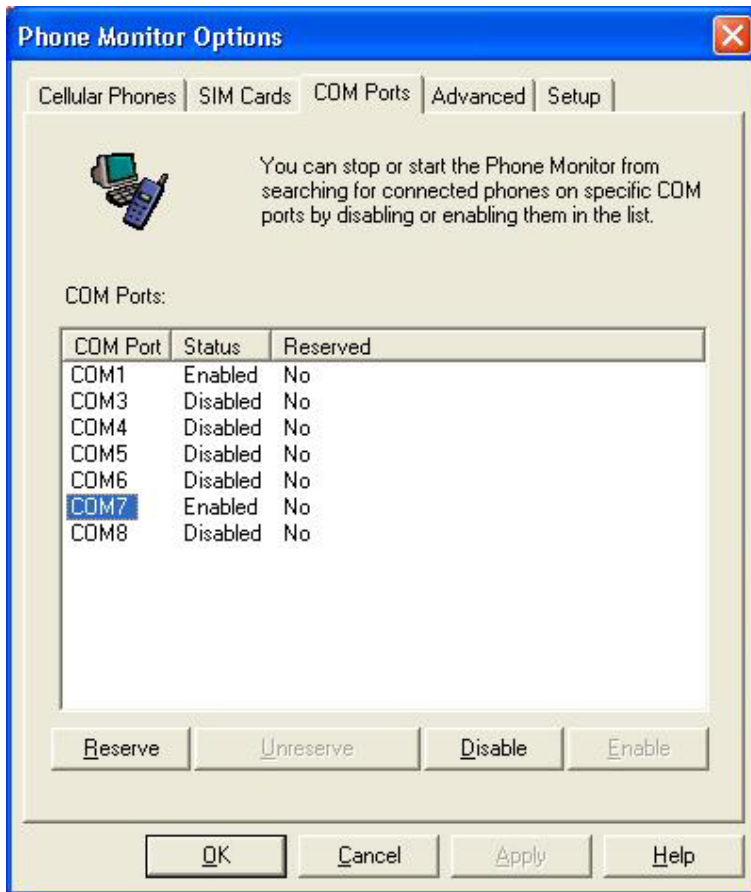


4. Double click the Phone Connection Link on the task bar to bring out the Link Properties window. Un-tick the COM port that was used for synchronization.

5. Check the outbound Bluetooth Serial Port used by your system in Bluetooth (on menu bar)-> Advanced Configurations-> Client Applications->Bluetooth Serial Port (e.g. COM7 in this case).



6. Enable the COM port used in step 5 in Start->Settings->Control Panel->Phone Monitor Options. (e.g. COM7 in this case) Then click OK to continue. We do recommend, however, to enable all the COM ports listed to make the process easier.



7. Click Accept on your P800, when asked that your system is trying to connect in order to transfer an entry.

Wizard will start searching for connected phones.

8. When your P800 appears in the Select Phone window, click OK to continue.



9. When the Phone Connection Wizard window appears, click Next to continue.



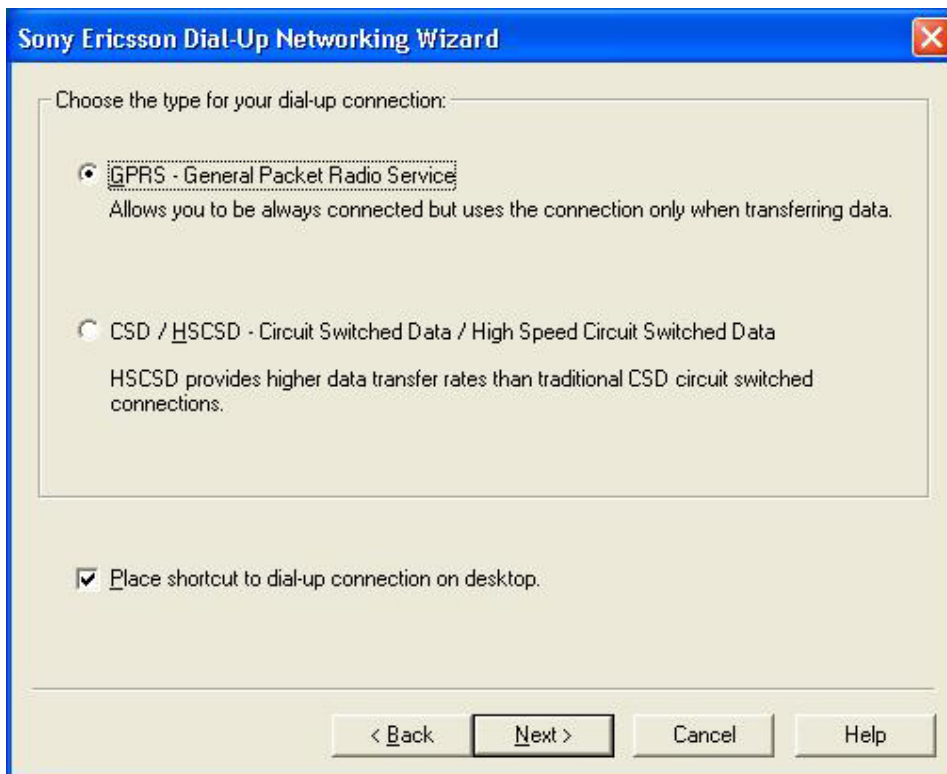
10. Click Finish to continue.



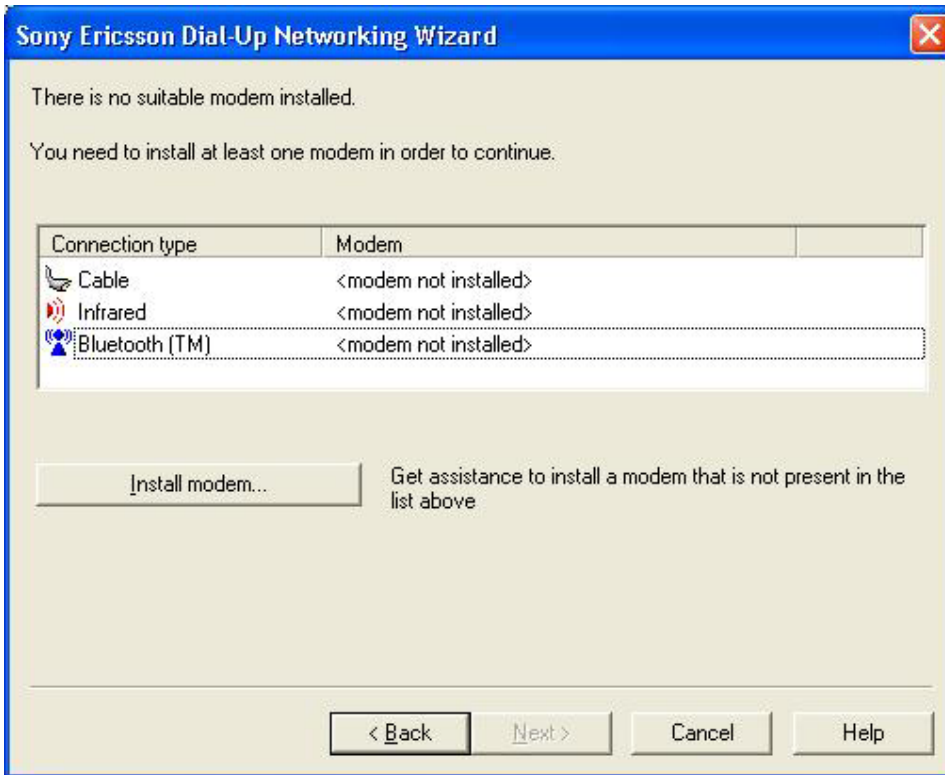
11. Sony Ericsson Dial-up Networking Wizard will appear, select BluetoothConnection and click Next to continue.



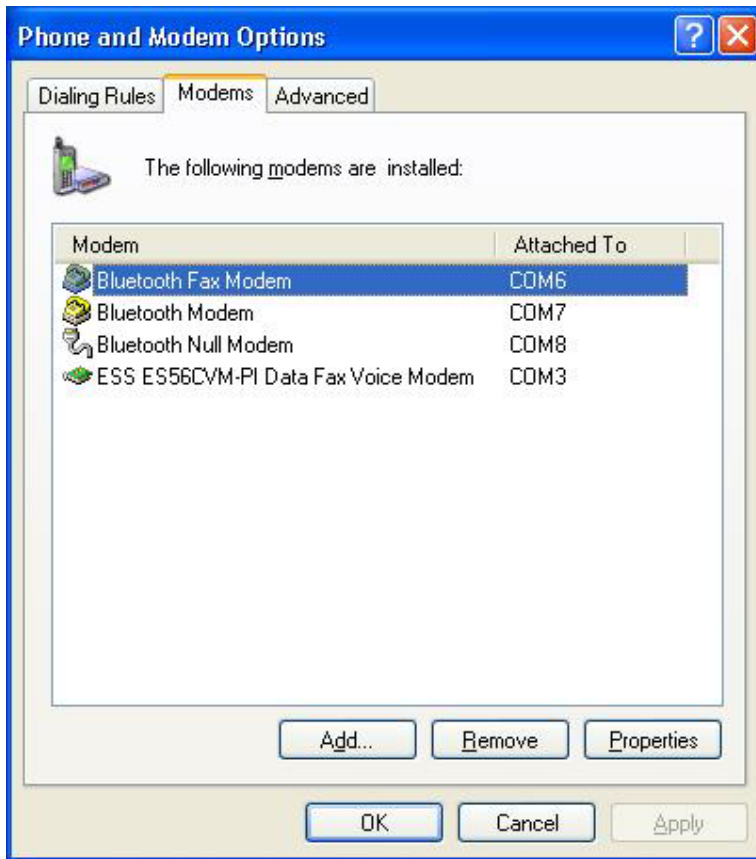
12. Choose the type for your dial-up connection, then click Next to continue.



13. When the following window appears, click the Install modem... button to install Ericsson Bluetooth modem.



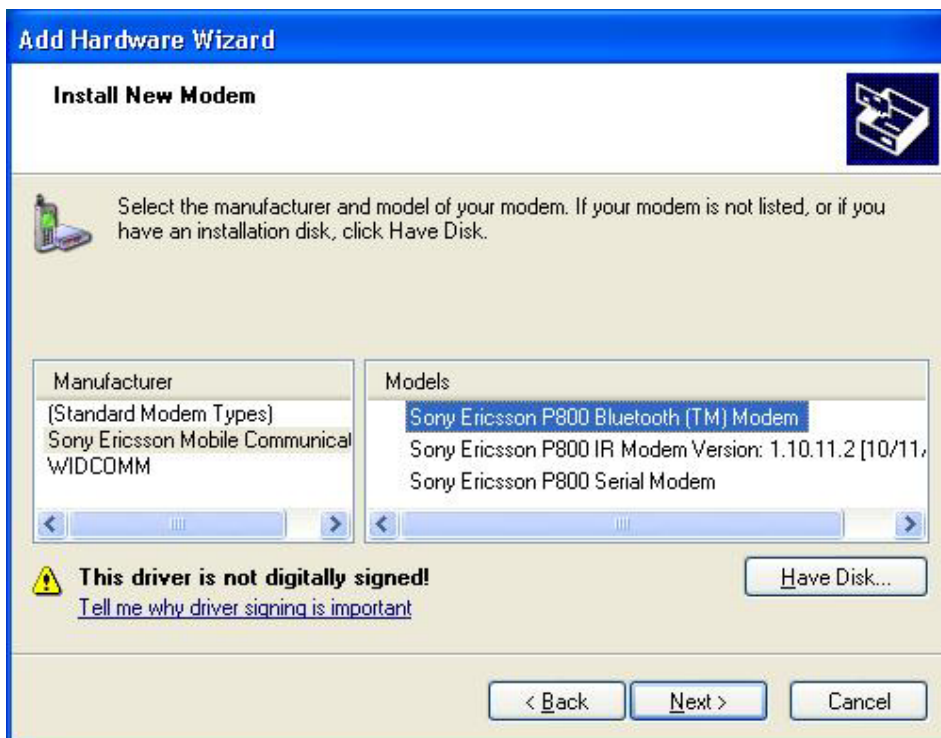
14. Click the Modem tab, and click Add... to continue.



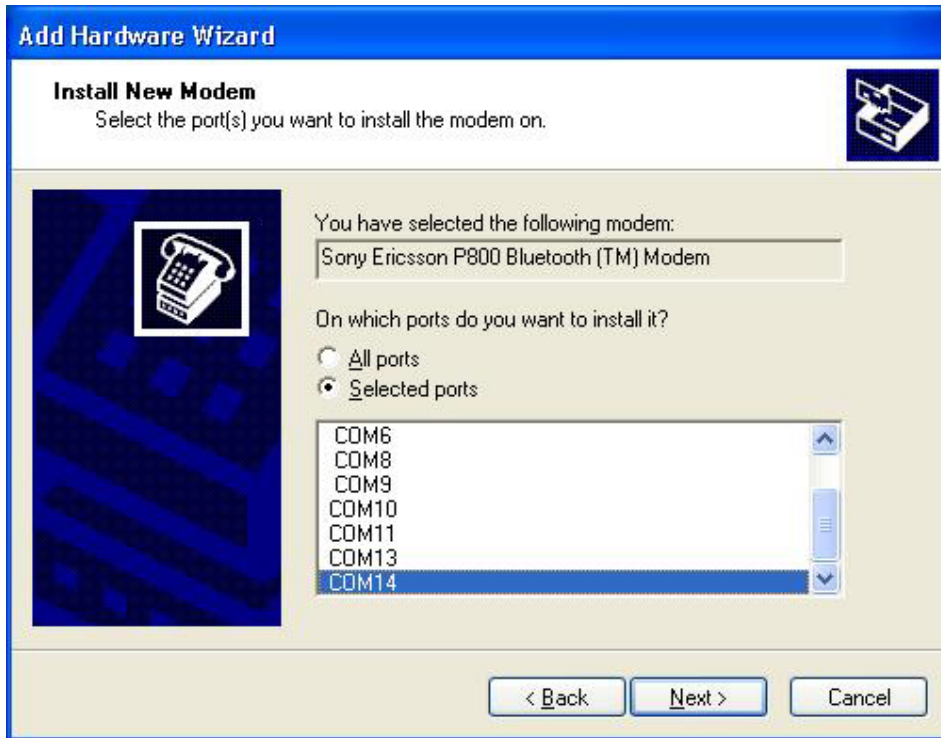
15. Click "Don't detect my modem; I will select it from a list", then click Next to continue.



16. Select Sony Ericsson Mobile Communications->Sony Ericsson P800 Bluetooth (TM) Modem, then click Next to continue.



17. Assign a COM port to the new Sony Ericsson P800 Bluetooth Modem.



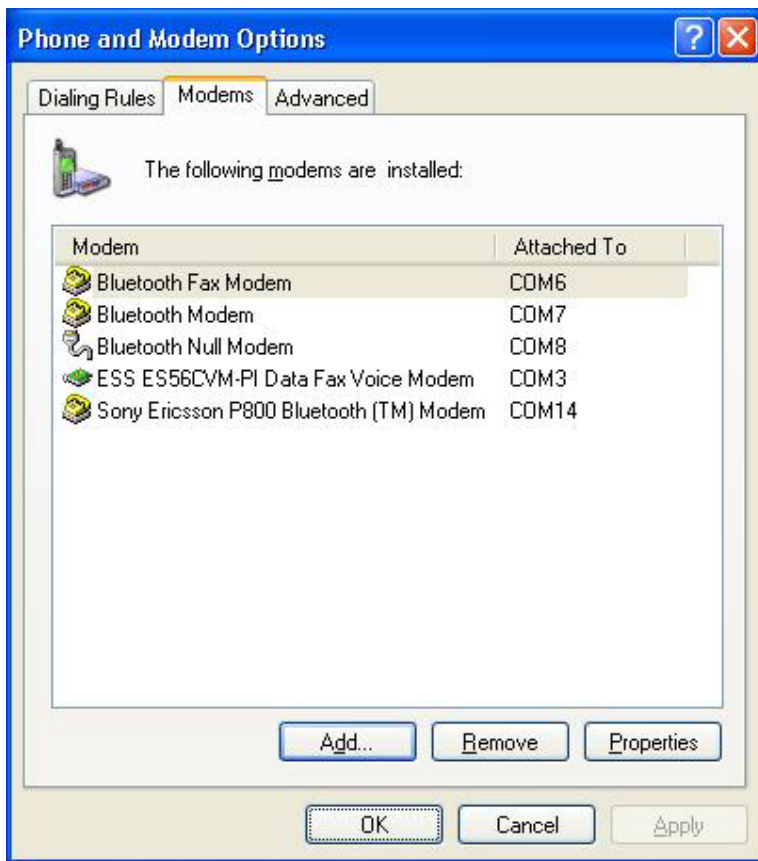
18. Click Continue Anyway to install the driver.



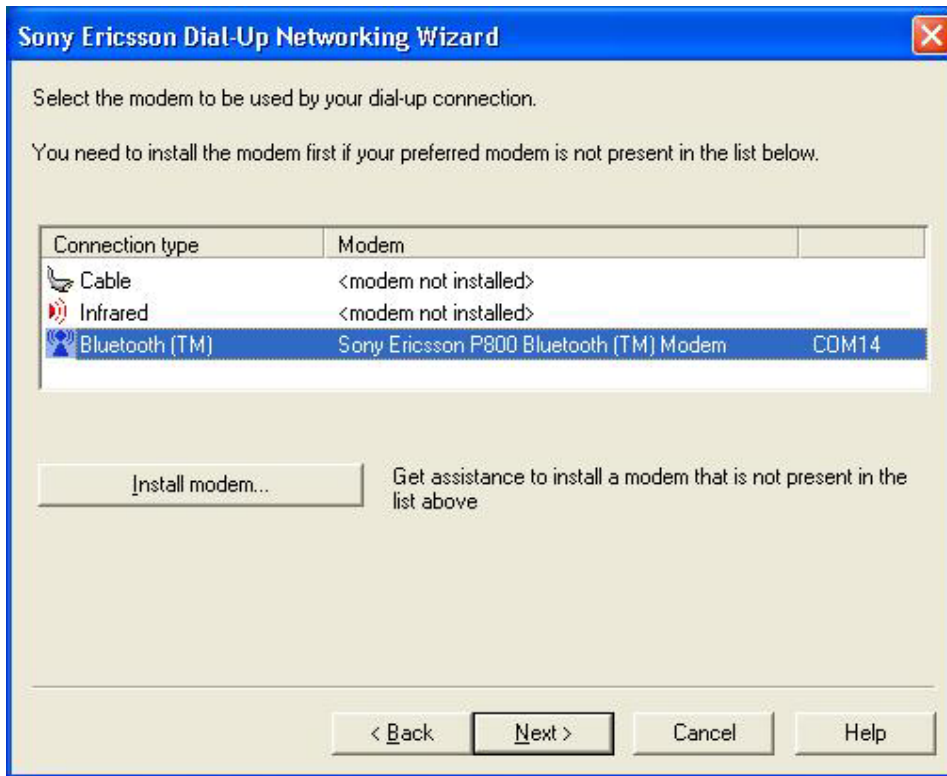
19. Click Finish to continue.



20. Click OK to continue.



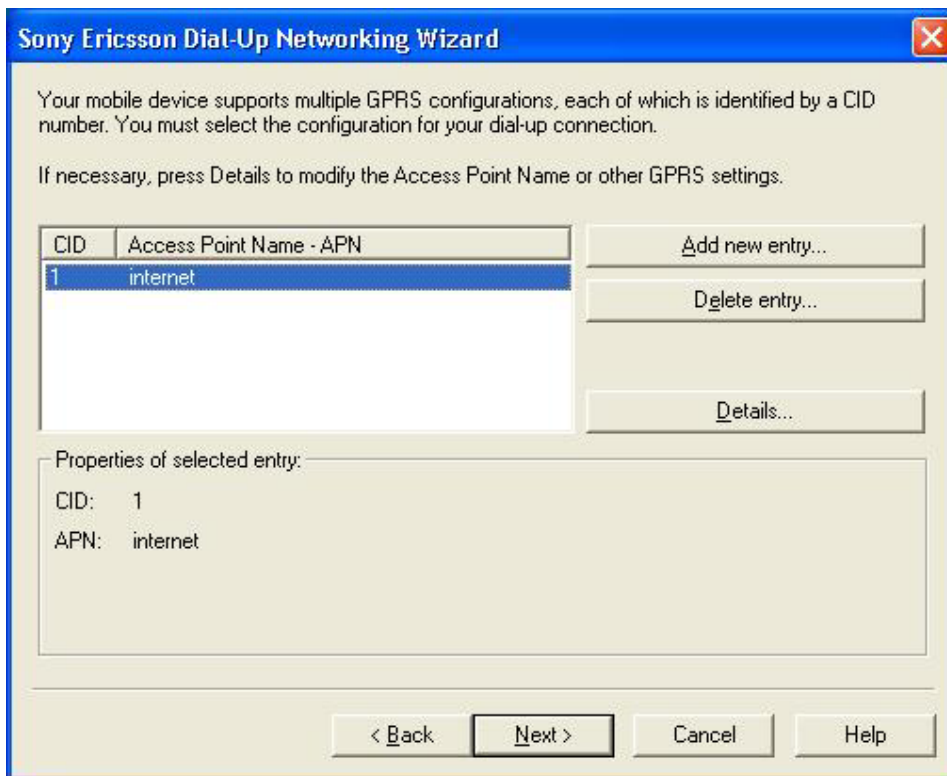
21. Click Next to continue.



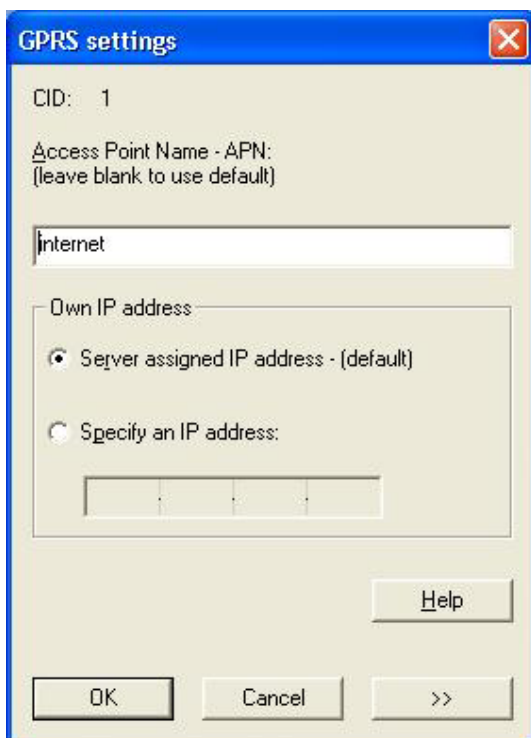
22. Wizard will start retrieving GPRS configurations from your P800.



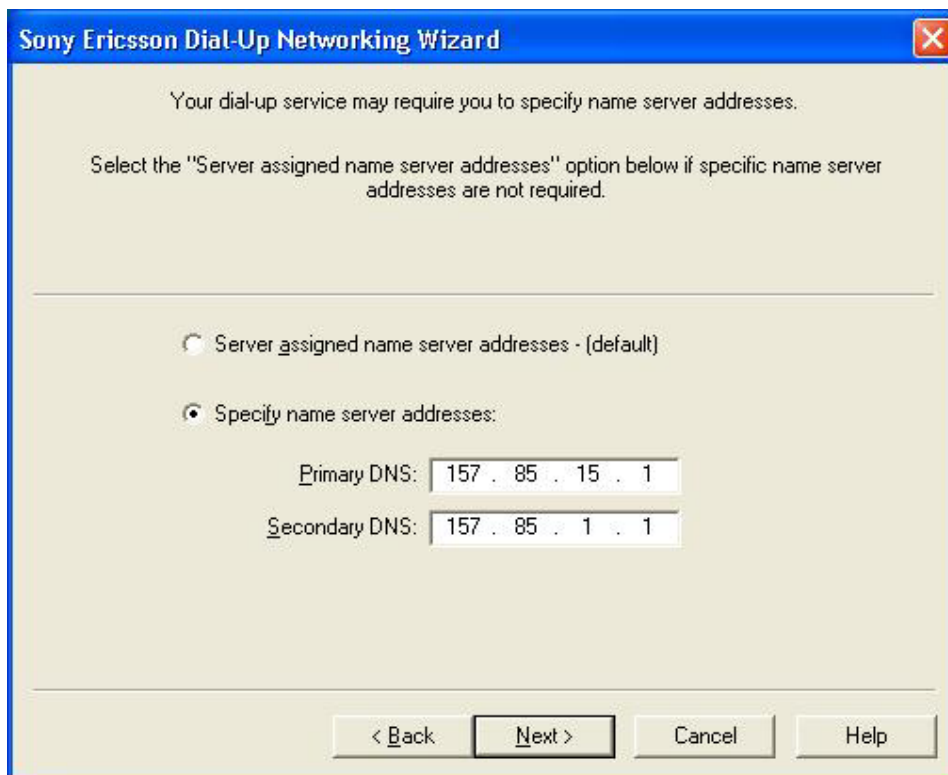
23. Check with your GPRS service provider for the correct APN value to enter, then click Next to continue.



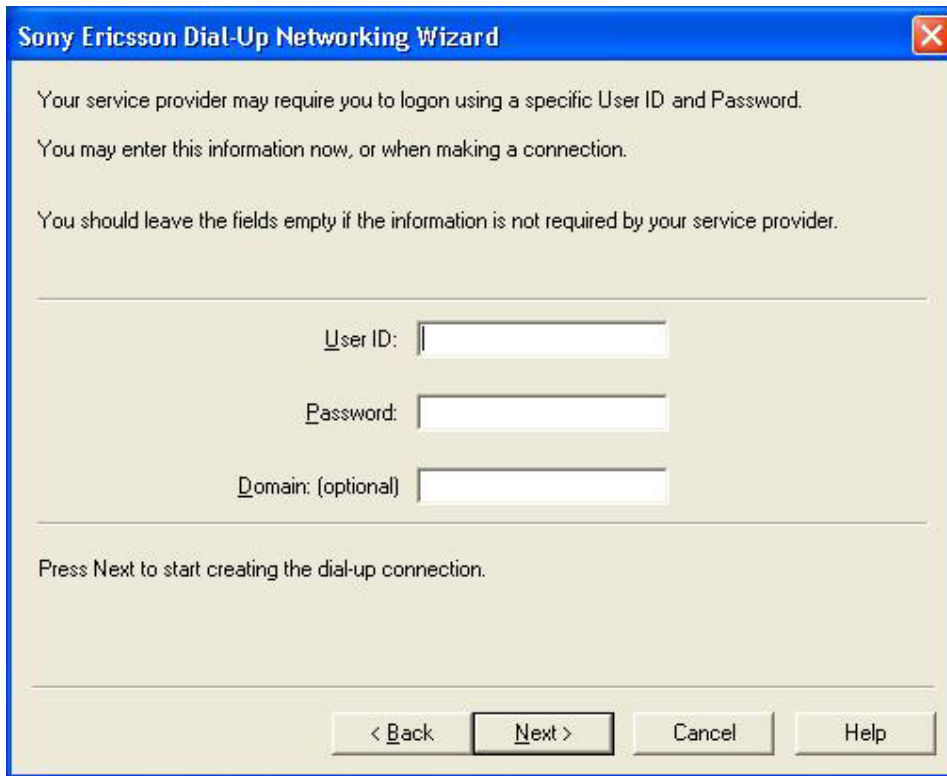
24. Make sure the APN has a correct value.



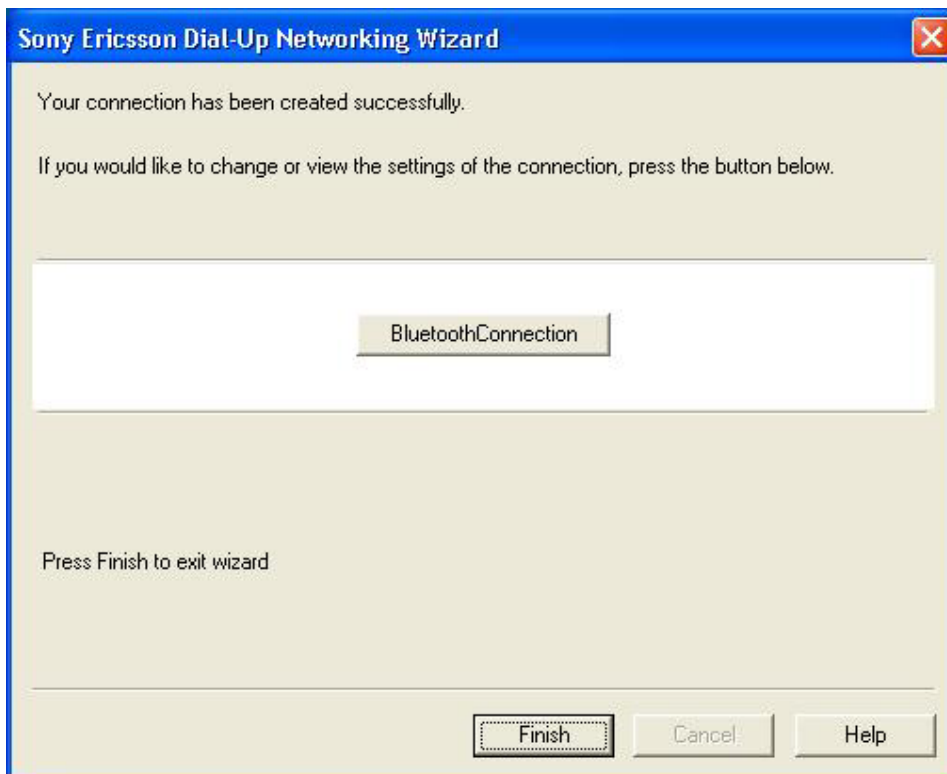
25. Check with your GPRS service provider if DNS is required. Then click Next to continue.



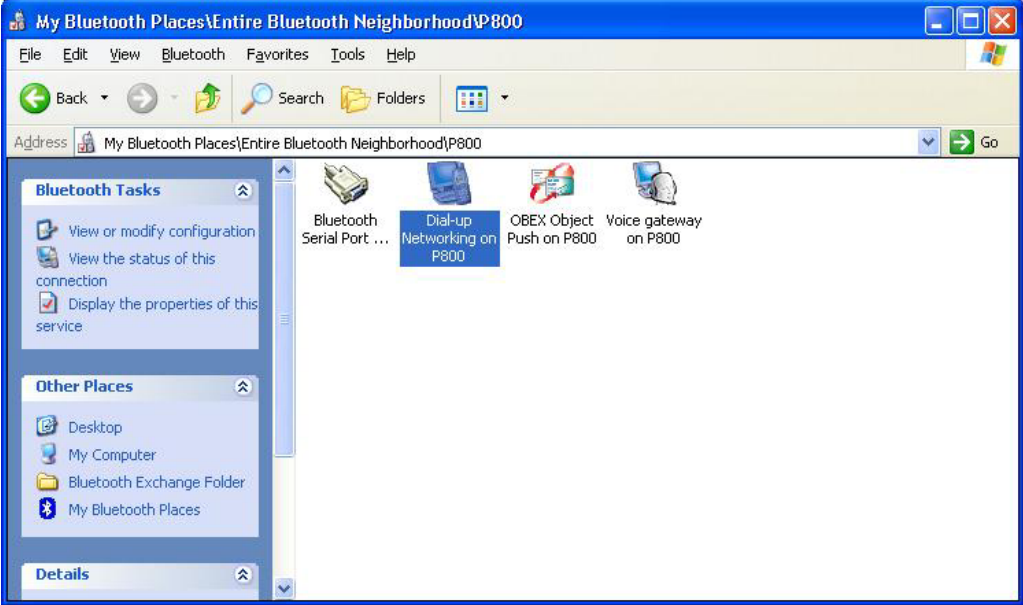
26. Check with your GPRS service provider if UserID and Password is required. Then click Next to continue.



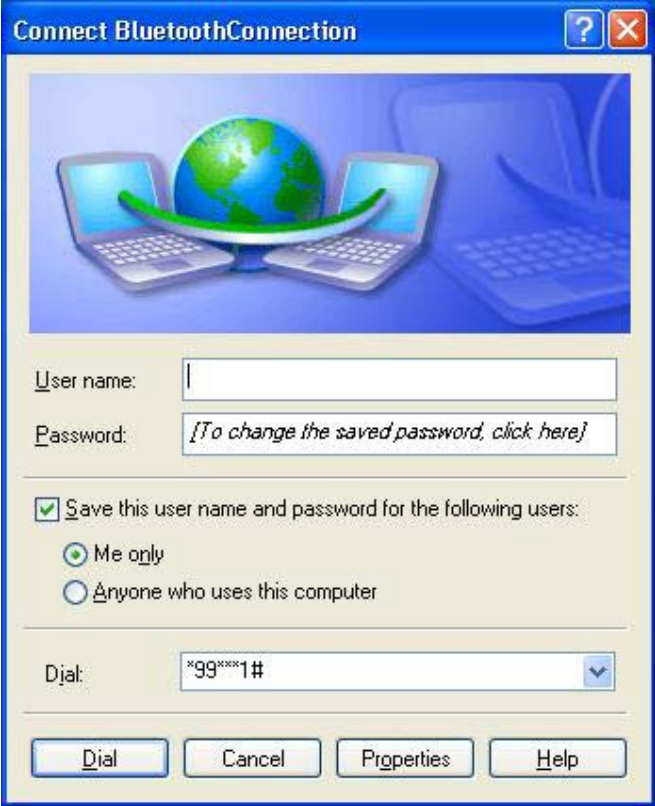
27. Click Finish to close the wizard.



28. In your Bluetooth software, double click the Dial-up Networking icon of your P800.



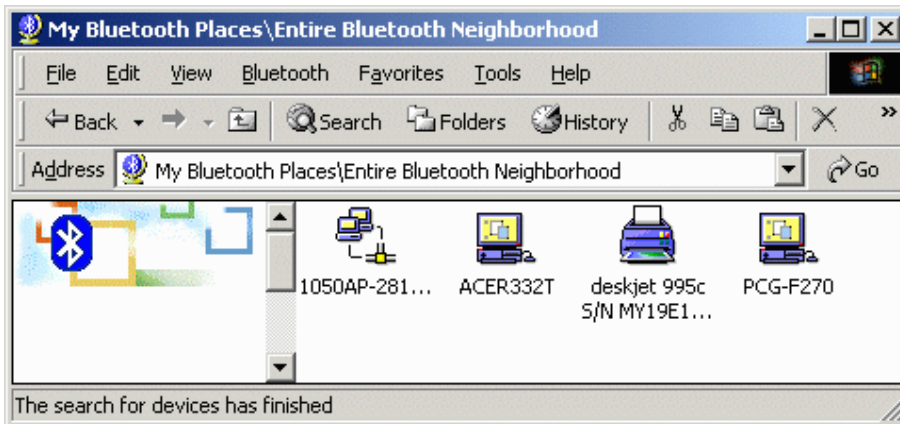
29. The number to dial will be entered automatically, click Dial to establish a GPRS connection.



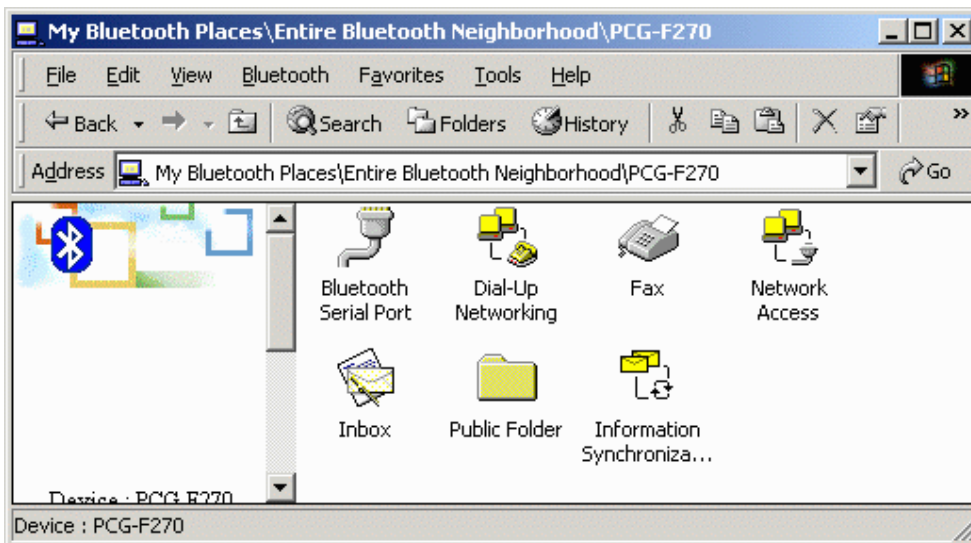
How to set up HyperTerminal for Bluetooth transfer

(1) Install Bluetooth Software on two separate notebooks or desktop PCs (referred to as server and client in the following document).

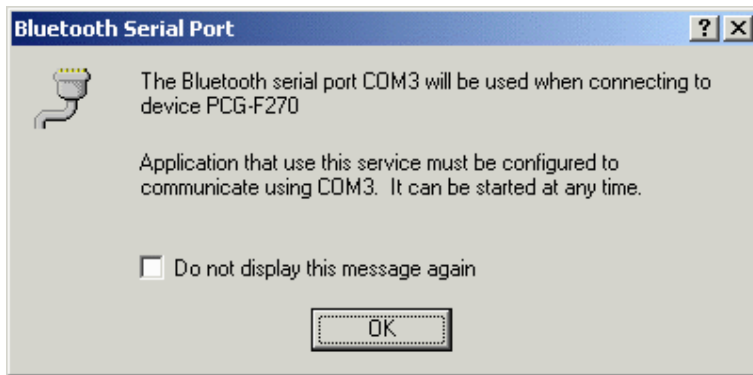
(2) With Bluetooth adapter inserted, do a "Search for devices" on client to find near by Bluetooth devices.



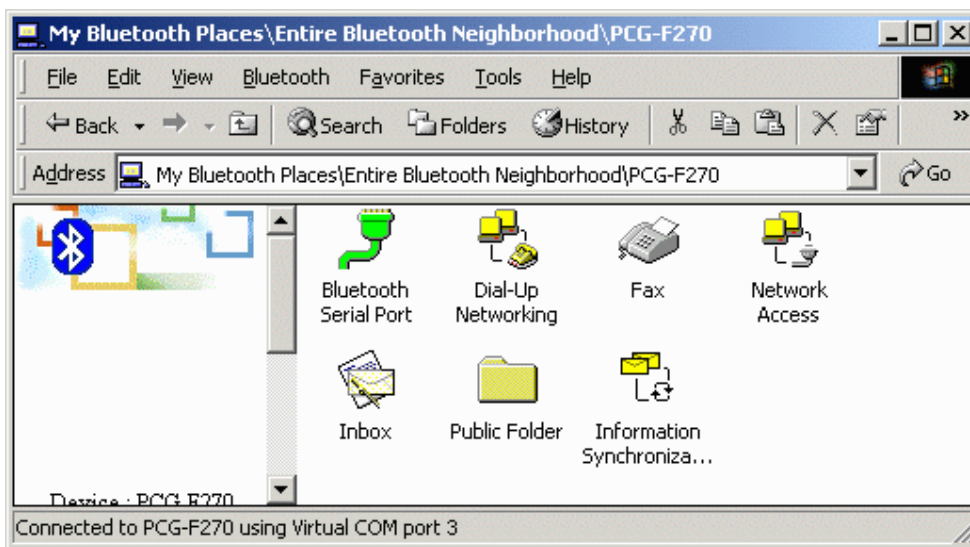
(3) Double click on the Bluetooth device you wish to connect to (e.g. PCG-F270, the server).



(4) Double click on "Bluetooth Serial Port"; take a note of the COM port used by this connection (e.g. COM3).



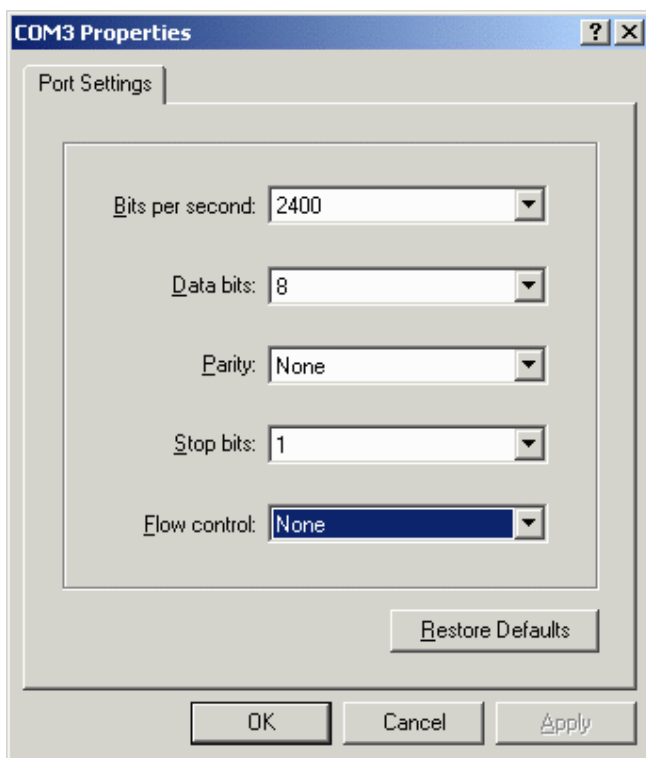
(5) The Bluetooth Serial connection should now be established.



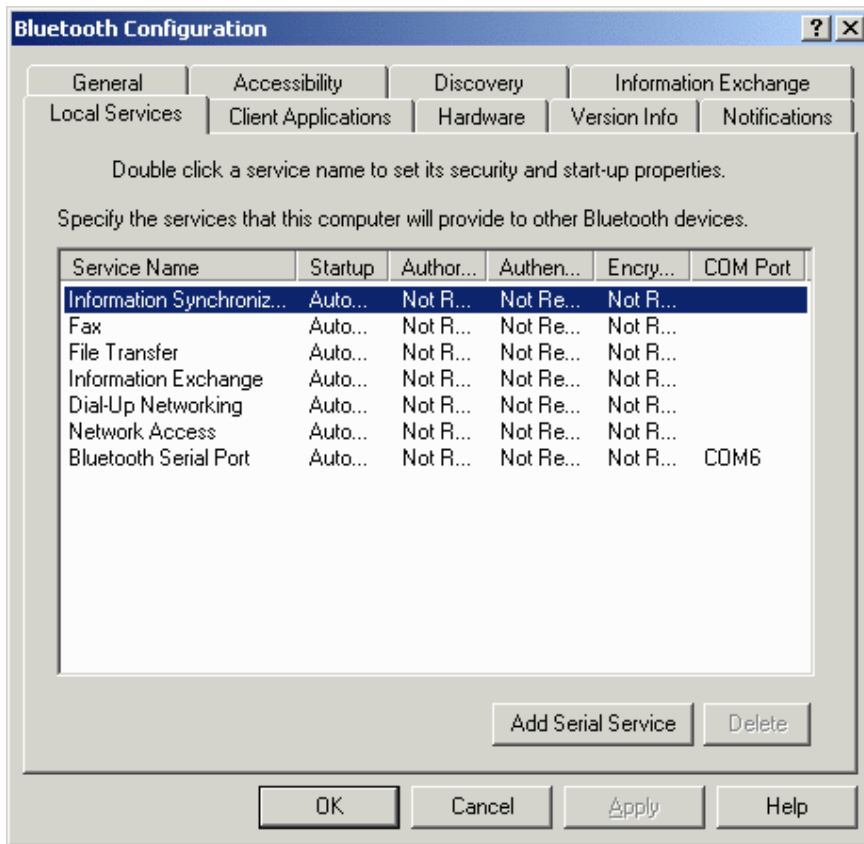
(6) On the **client** side, open HyperTerminal. Choose the COM port used by the Serial connection in step 4.



(7) Set the baud rate and other settings as required.



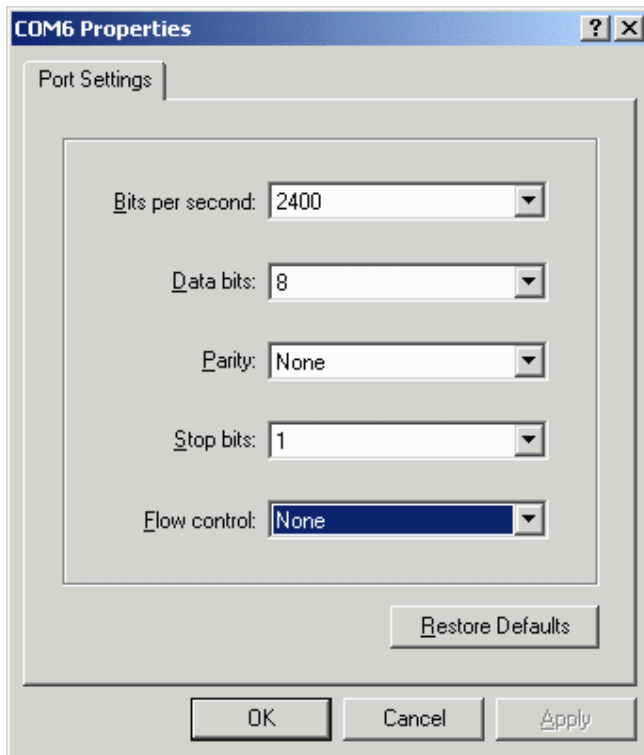
(8) On the **server** side, check the local COM port used by the system in the Bluetooth Configuration window (e.g. COM6).



(9) Open HyperTerminal, choose the COM port used by the system in step 8.

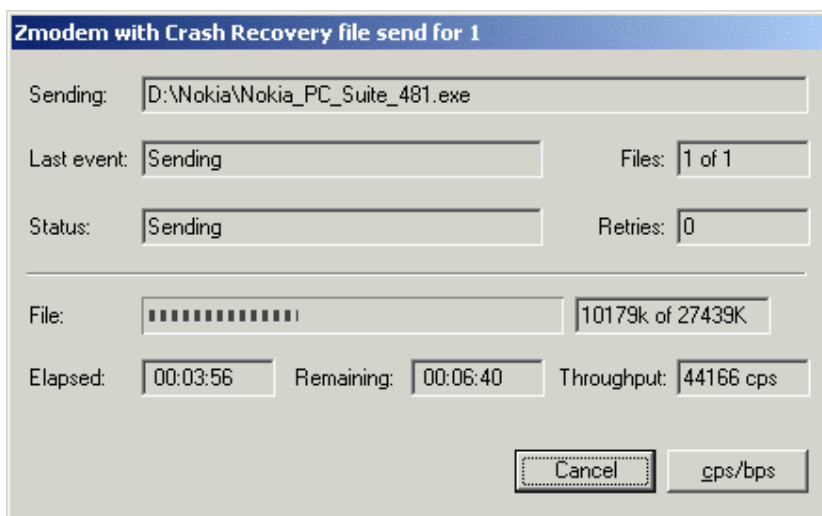


(10) Set the baud rate and other settings as required.

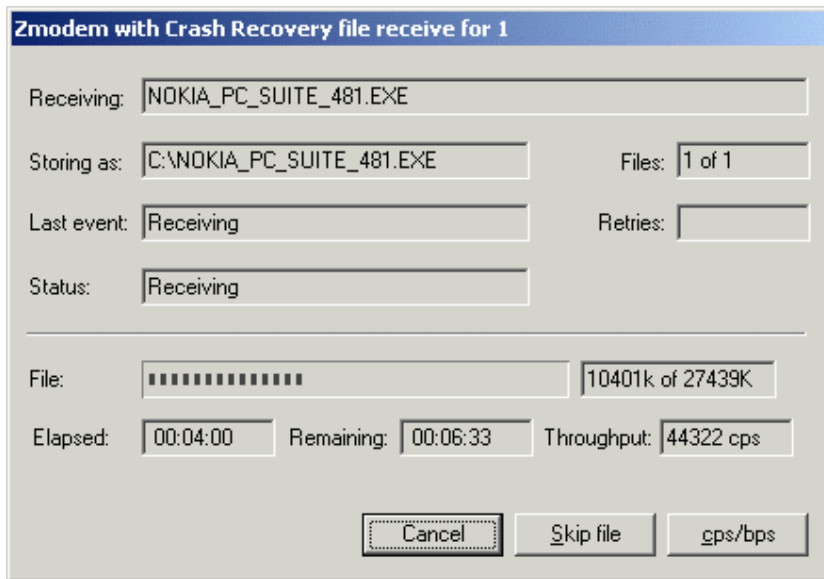


(11) The HyperTerminal connection should now be established. Type something on the client side and the same thing will appear on the server.

(12) To transfer files, select "Send File" from the menu bar of the client system, and select the file you wish to transfer.



Client window



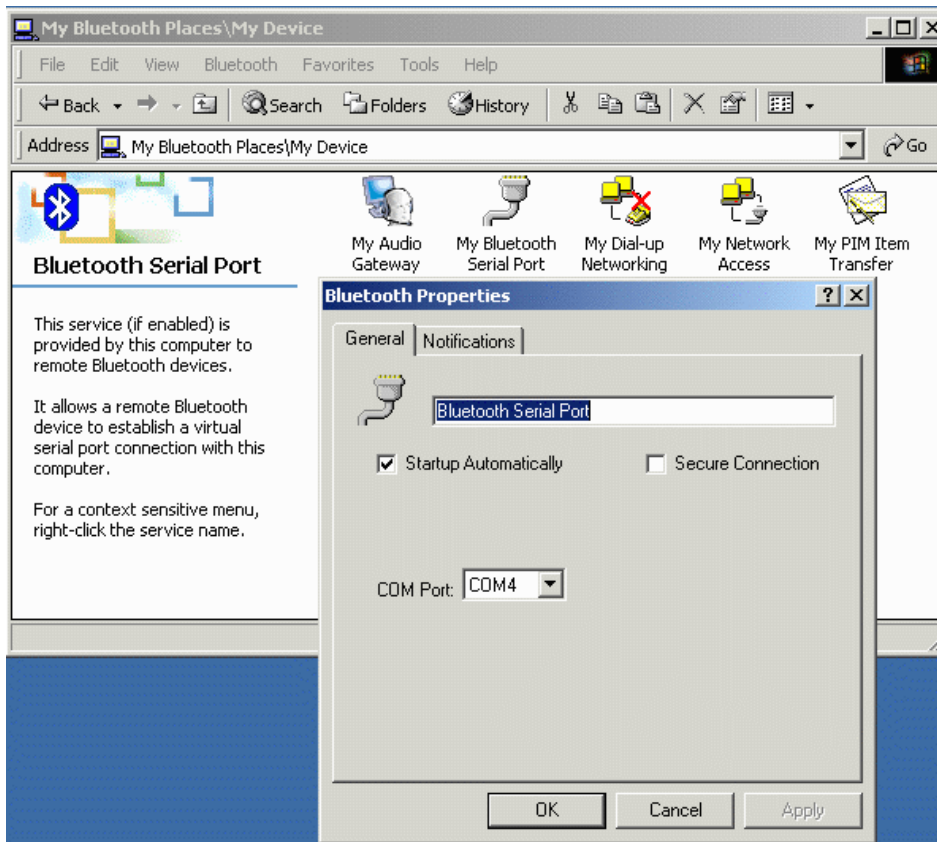
Server window

(13) The received file should be placed on the C: drive of the server system (default location).

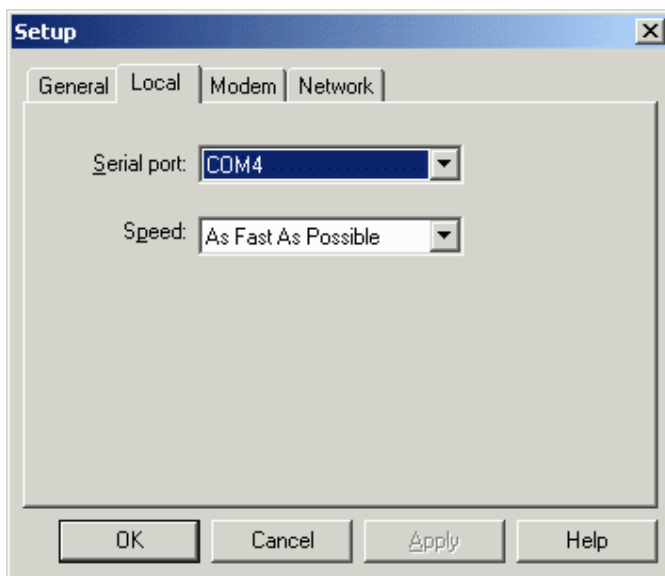
How to HotSync with Palm Bluetooth SDIO and Tungsten T

Please make sure you have installed Bluetooth software and Palm Desktop on your notebook or desktop PC before proceeding to the setup instructions below.

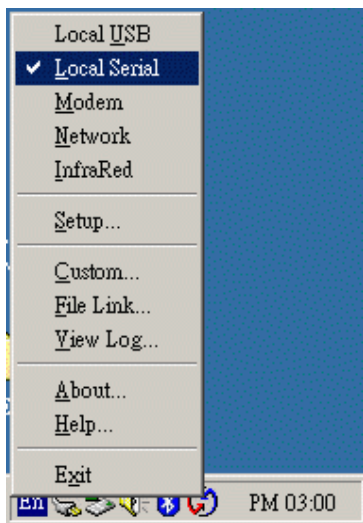
- (1) From the Palm main panel, tap the HotSync icon.
- (2) Tap HotSync and select "Connection Setup" from the menu bar.
- (3) Tap "New".
- (4) Give the new connection a name, e.g. BTConnection.
- (5) Change "Connect to:" to "PC".
- (6) Change "Via:" to "Bluetooth".
- (7) The "Device:" option will pop up, tap to find the Bluetooth system you wish to HotSync with.
- (8) Select the Bluetooth system you wish to HotSync with and tap OK.
- (9) Tap "Yes" when prompted with "Do you want to add *** to your trusted device list?".
- (10) Key in the same passkey on Palm and your notebook or desktop PC to complete the pairing process.
- (11) Tap "OK" and "Done" to return to the HotSync panel
- (12) Tap the dropdown menu to select the Bluetooth connection you have just created. E.g. BTConnection
- (13) From the notebook, find out the local COM port used by "Bluetooth Serial Port", e.g. COM4. (My Bluetooth Places->My Device, right click My Bluetooth Serial Port and select Properties)



(14) Change the COM port setting in Palm HotSync to match the COM port found in step 11, e.g. COM4.



(15) Change the connection type to "Local Serial" in the HotSync Manager.



(16) Tap the HotSync silk button on Palm, and the HotSync process should begin in a few seconds.

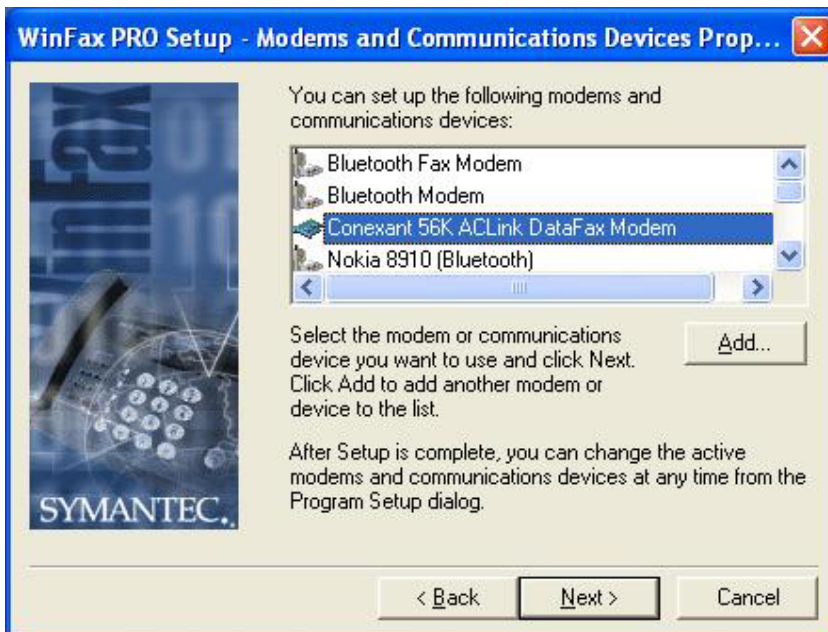
How to dial-up from Palm Tungsten T to my PC's modem to surf the Internet

- (1) Enable Bluetooth on your PC and make sure you can dial up to the ISP with your modem.
- (2) On your Palm, in the main panel, tap "Prefs", select "Communication", and select "Network".
- (3) Tap "New" button.
- (4) Key in a new name for "Service:", e.g. pcmodem.
- (5) Key in the "User Name:"
- (6) Key in the "Password:"
- (7) Tap on "Connection" and select "Edit Connections..." to create a new connection setup.
- (8) Tap "New" button.
- (9) Key in a new name for "Name:", e.g. btmodem
- (10) Tap on "Connect to:" and select "Modem"
- (11) Tap on "Via:" and select "Bluetooth"
- (12) Tap on "Device:", wait for your PC to be found
- (13) Select your PC and tap "OK"
- (14) Palm will ask you to add your PC to the trusted device list, tap "Yes"
- (15) Key in a numeric passkey, e.g. 1, and tap "OK"
- (16) Type in the same passkey on your PC, now the pairing process is complete
- (17) Make sure "Dialing:" is set at "Touch Tone"
- (18) Tap the "OK" button and "Done" to return to the Network page
- (19) Tap on "Connection:" and select the connection setup you've just created
- (20) Tap on "Phone:" and enter the phone number of your ISP
- (21) Tap the "Connect" button and the modem on your PC should start dialing
- (22) Once connected, launch a web browser and you should be surfing the Internet.

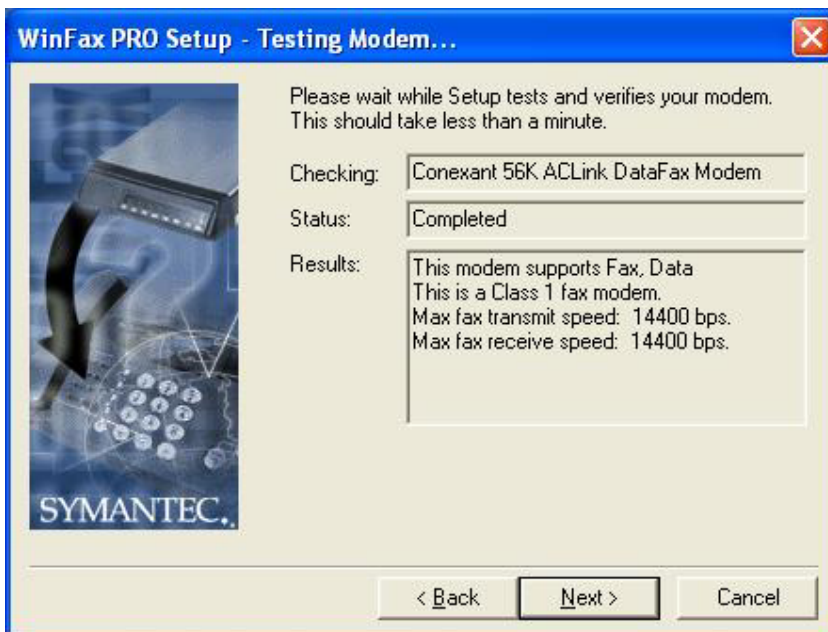
Sending FAX via mobile phone with WinFax Pro

NOTE: Please make sure you have subscribed to the FAX sending/receiving feature with your mobile service provider.

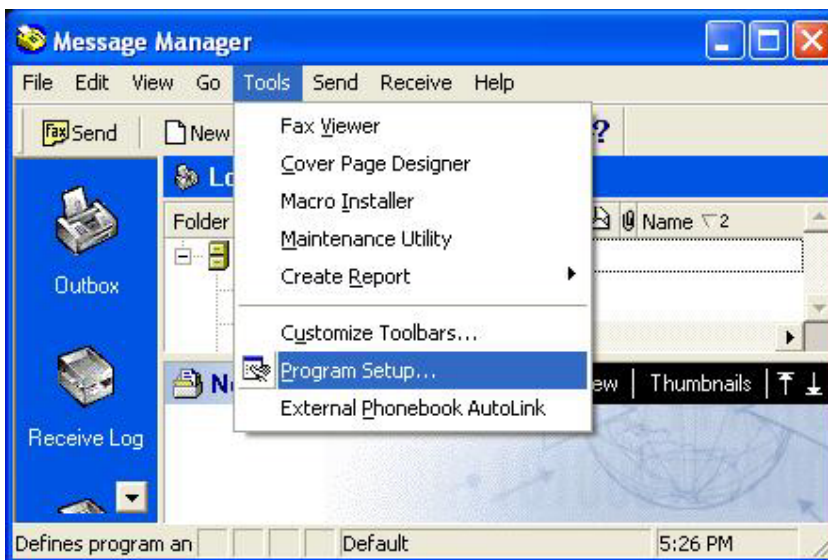
- (1) Please install WinFax Pro according to WinFax Pro's installation instructions.
- (2) Before installing WinFax Pro, Please make sure that your computer is connected with a physical Fax Modem.
- (3) After installing WinFax Pro, the following window will pop up, choose your physical modem at this stage. **Do NOT choose "Bluetooth Fax Modem"**.



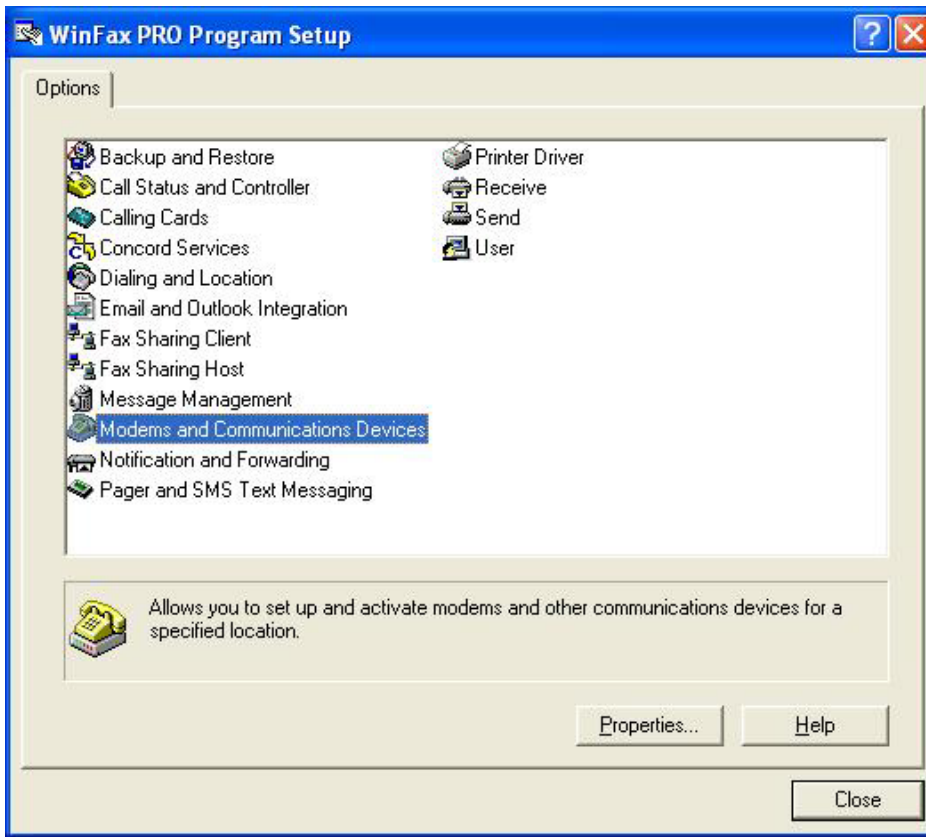
- (4) WinFax Pro will start testing the Fax Modem, once it's completed, click Next to continue.



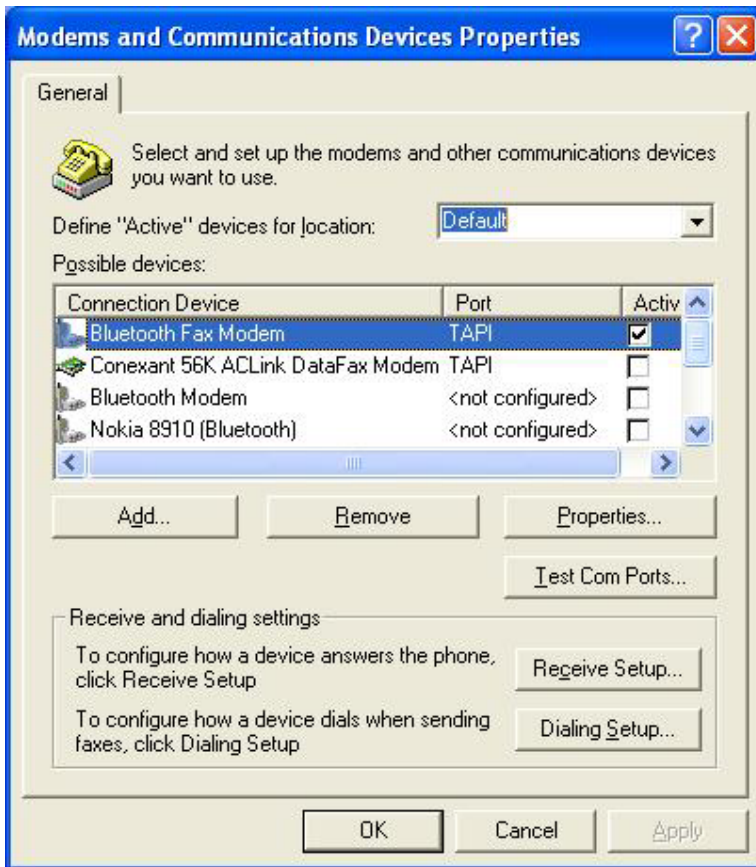
(5) After installation, launch WinFax Pro. Click on **Tools->Program Setup**.



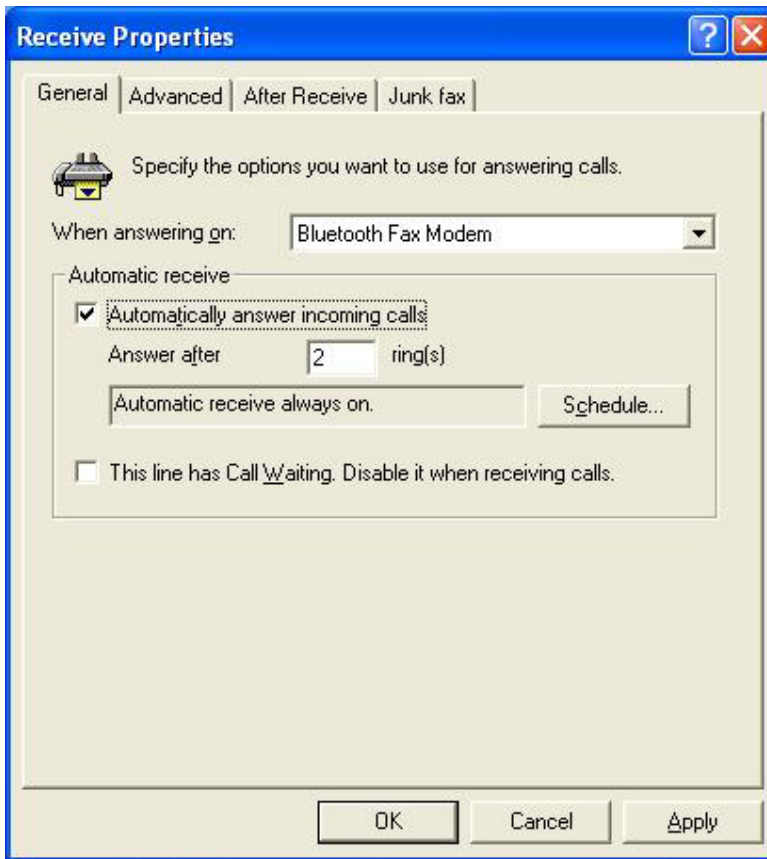
(6) Double click "Modems and Communications Devices".



(7) Tick the checkbox next to Bluetooth Fax Modem. Uncheck the checkbox next to your physical modem.



(8) Click the "Receive Setup" button, tick the "Automatically answer incoming calls" checkbox. Click "OK" to complete the process.



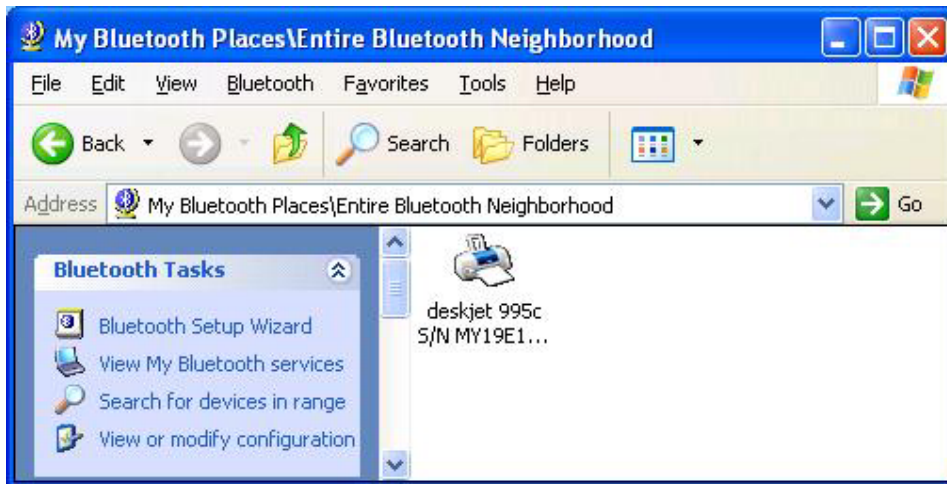
(9) Now create a new fax and click the "Send" button when done. You can now send faxes via your mobile phone.

Bluetooth Printing to HP DeskJet 995c

HCRP Connection

(1) Please update the HP DeskJet 995c firmware from HP's website, so that it is HCRP supported.

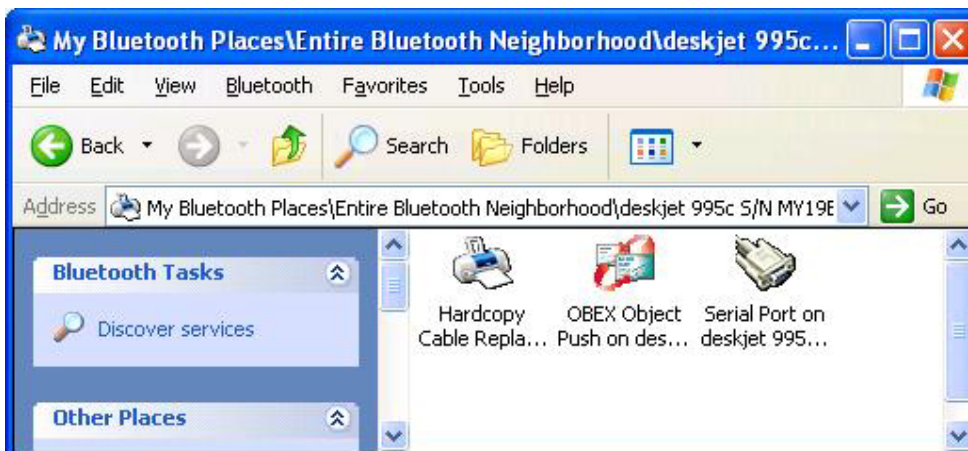
(2) Click "Search for devices in range", HP DeskJet 995c will appear in the right pane.



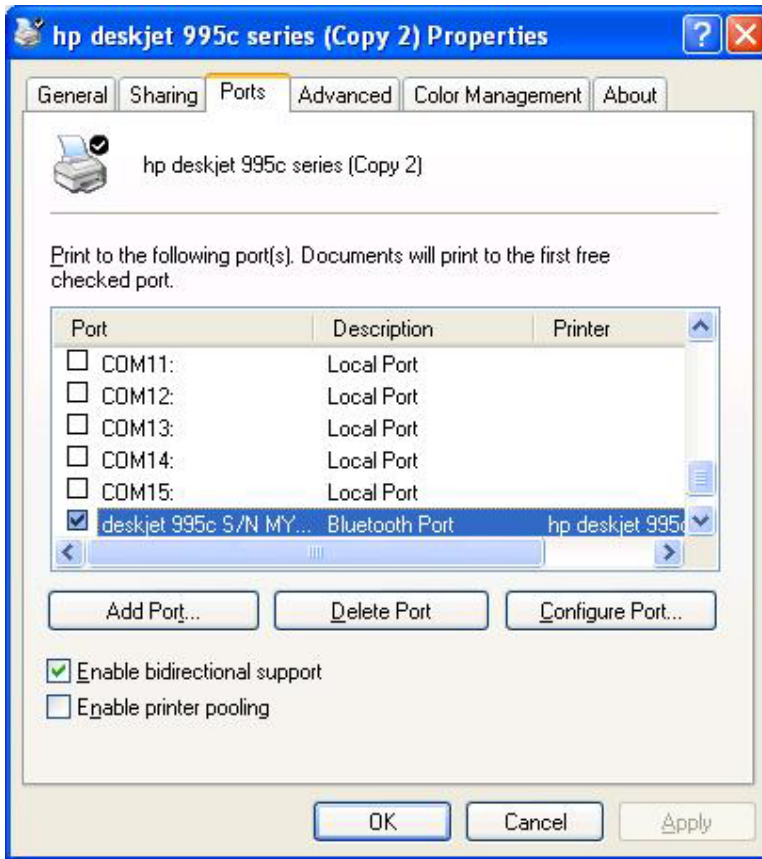
(3) Click to select the HP Deskjet 995c icon. Click "Bluetooth" on the menu bar, and select "Discover Available Services".



(4) Three services will appear.



(5) Double click the "Hardcopy Cable Replacement" icon, and select "Ports" tab. Make sure HP DeskJet 995c is connected to a Bluetooth Port.

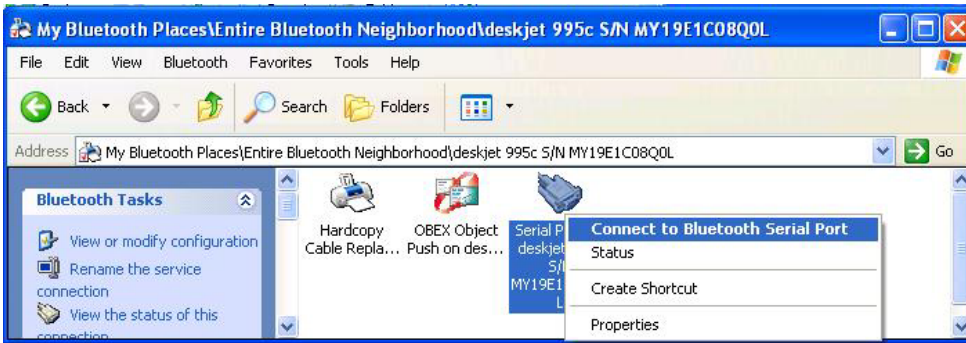


(6) You should now be able to wirelessly print a file to your HP DeskJet 995c.

SPP Connection

(1) If you don't want to update your HP DeskJet 995c to become HCRP supported, you could also connect and print via SPP connection.

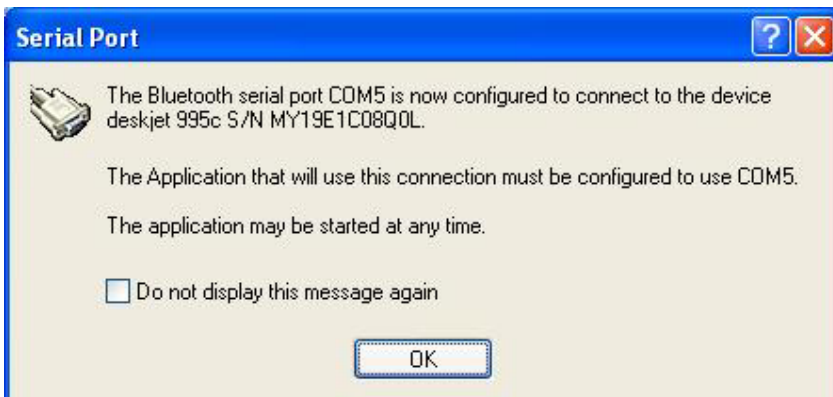
(2) Right click the "Serial Port" icon, select "Connect to Bluetooth Serial Port".



(3) A PIN Code Request dialog box will pop up, enter 0 as the default PIN Code for HP DeskJet 995c.



(4) HP DeskJet 995c is now connected with your Bluetooth enabled system. Click "OK" to continue.



(5) The Serial Port icon will change to green, indicates that the Bluetooth connection is on.



(6) You should now be able to wirelessly print a file to your HP DeskJet 995c.

6

Chapter 6

Application note for Mac O.S.

(A) Setting Up Your Computer for Bluetooth (manual based on Mac OS 10.1.4)

- (1) You need to set up your computer to use Apple Bluetooth Preview Release 2.1
- (2) Insert the Bluetooth USB Adapter into an open USB port on your computer.
- (3) Double-click "**Apple Bluetooth.pkg.**" Install the Apple Bluetooth Preview Release 2 software, then restart your computer.
- (4) Open the Bluetooth pane of System Preferences and click the Settings tab.



(5) Select **"Discoverable"** and **"Show Bluetooth status in the menu bar"**.

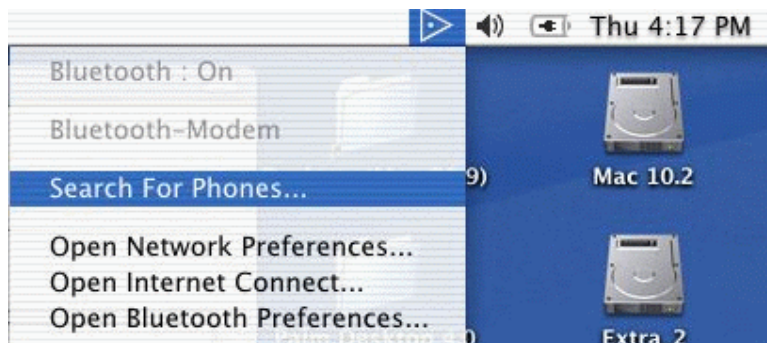


(B) Pairing Your Macintosh With a Bluetooth-Enabled Phone

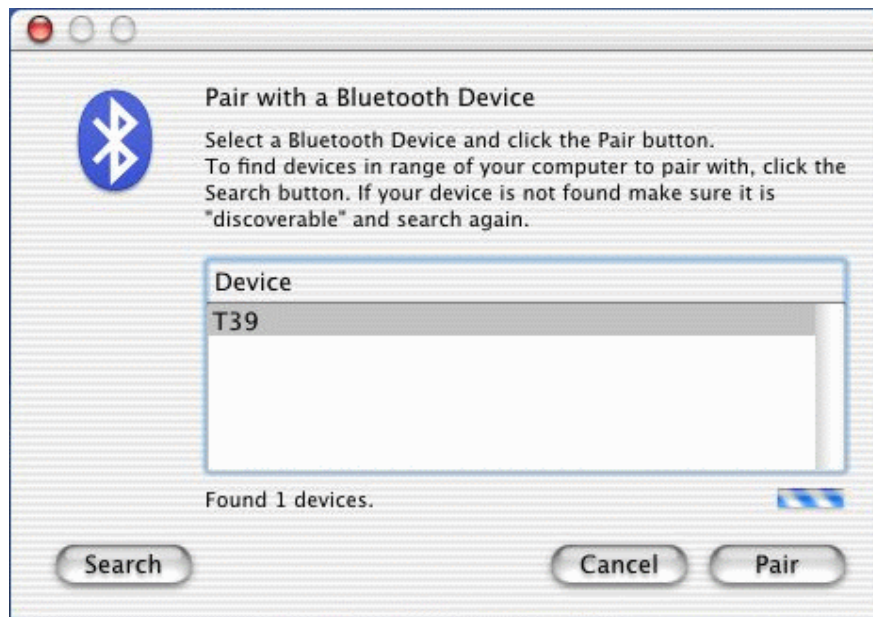
(1) Before you can connect to the Internet, you need to pair your computer with your Bluetooth-enabled phone.

(2) Make sure your Bluetooth-enabled phone is on and in "discoverable" mode. See the documentation that came with your phone.

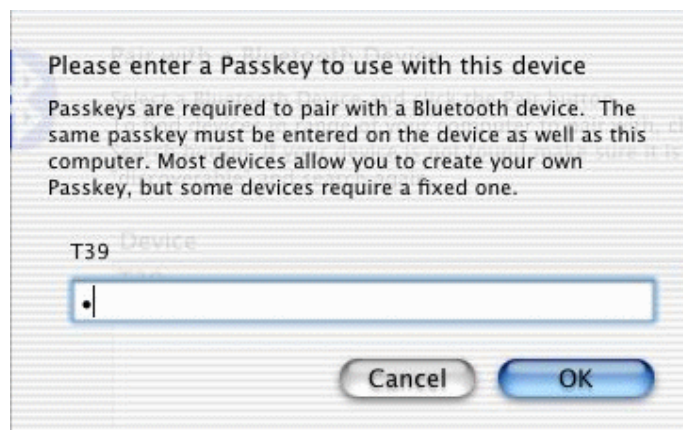
(3) Choose Search For Phones from the Bluetooth status menu in the menu bar.



(4) Select your phone in the "Pair with a Bluetooth Device" dialog box, then click Pair.



(5) Enter a passkey. Use any combination of numbers. When prompted, enter the same passkey on your phone.



(6) Your computer is now paired with your phone. The name of your phone is listed in the Bluetooth status menu in the menu bar. Apple Bluetooth software remembers the pairing with your phone, so you should only need to pair with your phone once.

(7) You can now use your phone to dial your Internet service provider (ISP) and connect to the Internet. Follow these instructions to set up your computer and connect to the Internet.

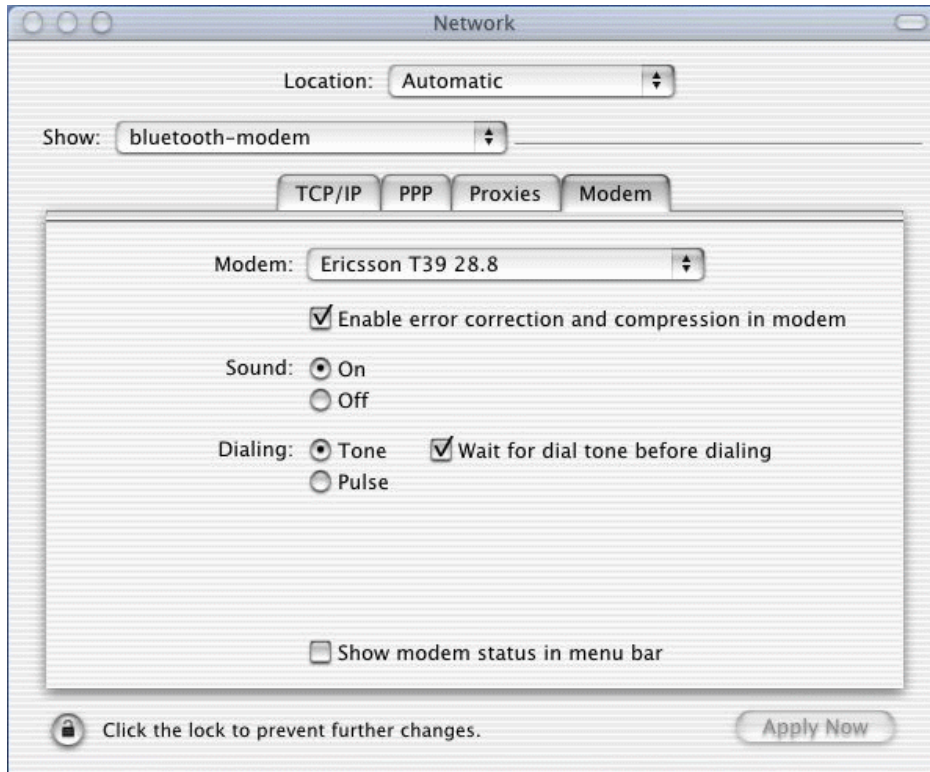
Note: To access the Internet, you must have an active mobile phone account capable of digital services and an account with an ISP (fees may apply).

(C) Connecting to the Internet With a Bluetooth-Enabled Phone

To set up your computer to connect to the Internet with a Bluetooth-enabled phone:

(1) Choose your phone from the Bluetooth status menu in the menu bar.

(2) Open the Network pane of System Preferences. Choose "**bluetooth modem**" from the Show pop-up menu.



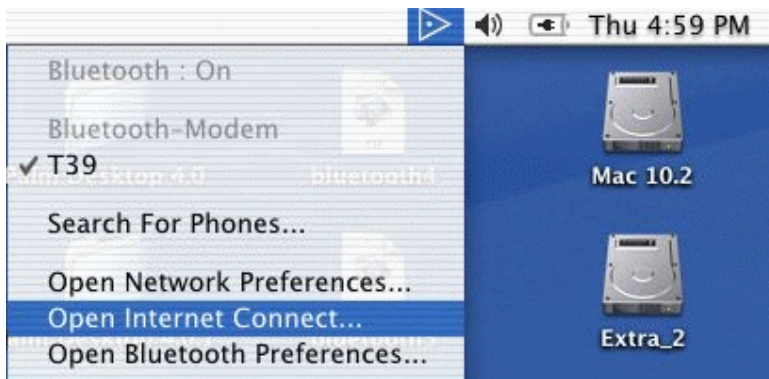
Note: Make sure the "bluetooth modem" port is turned on in the Network pane of System Preferences. To do this, choose Active Network Ports from the Show pop-up menu, and then select "bluetooth modem".

(3) Enter your ISP information in the TCP/IP and PPP tabs.

(4) Choose the model of your phone from the Modem pop-up menu in the Modem tab.

(D) To connect to the Internet:

(1) Choose Open Internet Connect from the Bluetooth status menu in the menu bar.



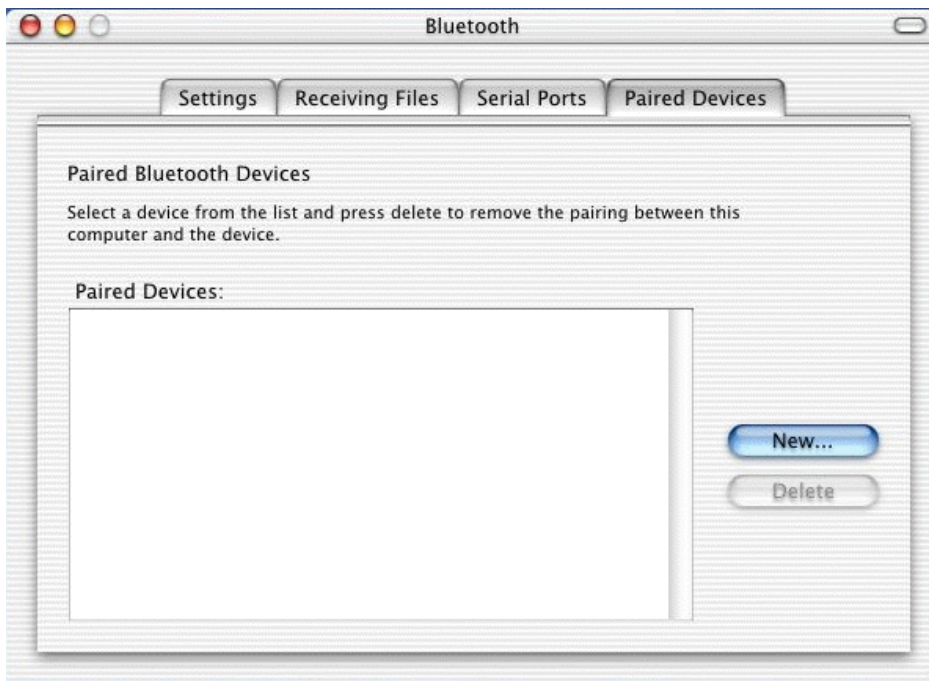
(2) Choose "bluetooth modem" from the Configuration pop-up menu then click Connect.



(E) Pairing Your Macintosh With Bluetooth-Enabled Devices

Apple Bluetooth Preview Release 2 also lets you pair with other Bluetooth-enabled devices like Palm Powered handheld devices and other Bluetooth-enabled computers. Once you have paired with the device, Bluetooth remembers its name and the type of services it provides. Make sure the devices you want to pair with are in discoverable mode. See the documentation that came with the device.

(1) Click the Paired Devices tab in the Bluetooth pane of System Preferences.



(2) Click New. Bluetooth searches for Bluetooth-enabled devices in range of your computer.

(3) Select the device you want to pair with and click Pair.

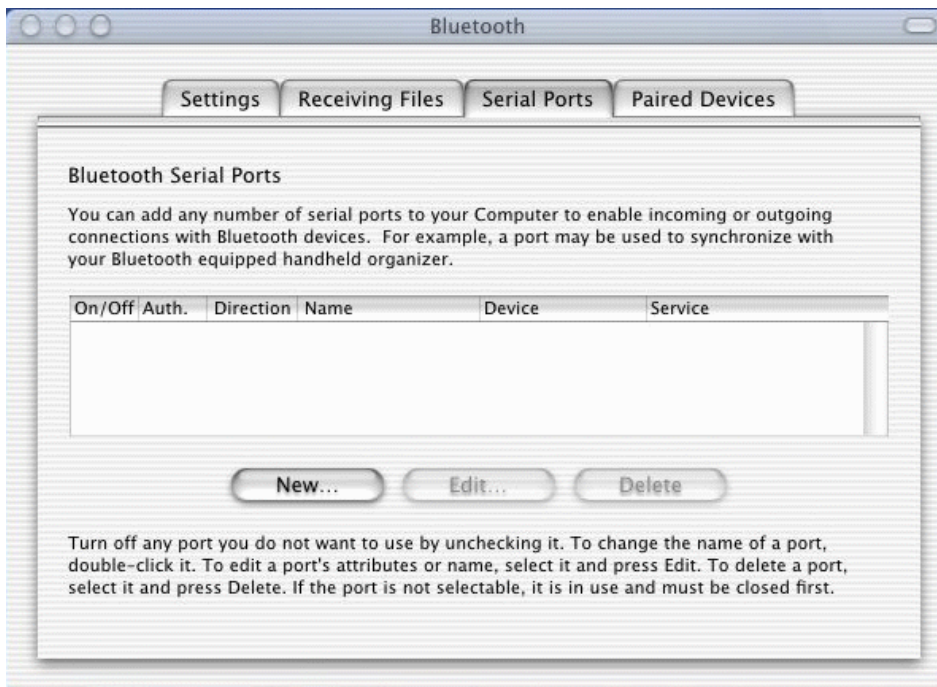
(4) Enter a passkey. Use any combination of numbers. If prompted, enter the same passkey on your Bluetooth-enabled device. Bluetooth remembers the name of the device. To delete the device from the list, select it and click Delete.

(F) Adding Serial Ports

Apple Bluetooth Preview Release 2 allows you to add any number of serial ports to your computer to enable incoming and outgoing connections with Bluetooth devices.

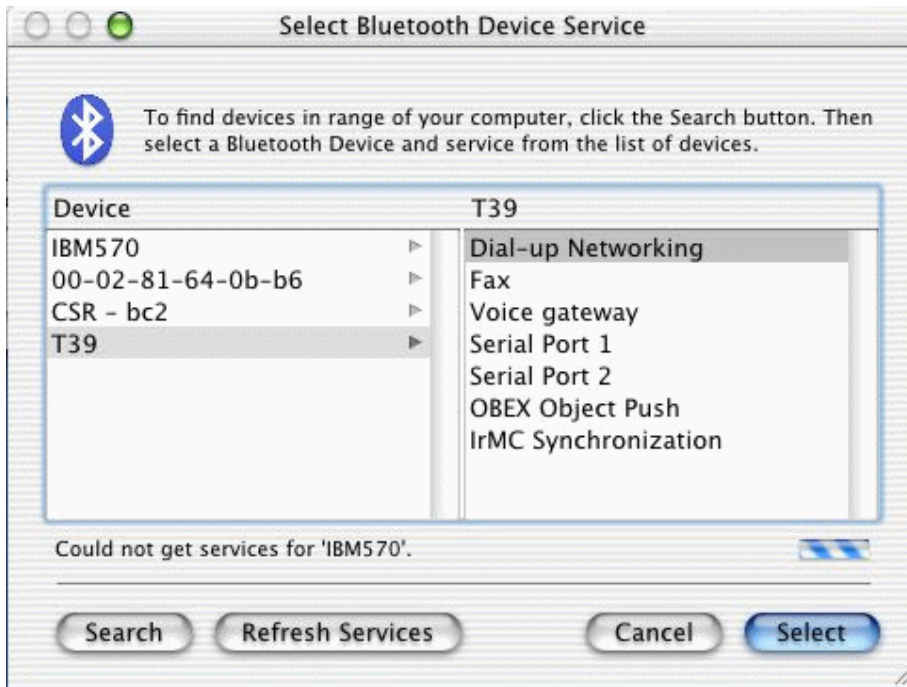
To add serial ports to your computer:

(1) Click New in the Serial Ports tab of the Bluetooth pane of System Preferences.



(2) Name the port and select options for it.





Note: If the port is an outgoing port, click *Select Device* and then select a device from the *Select Bluetooth Device Service* list or search for a device by clicking *Search*.

(G) Exchanging Files Between Bluetooth-Enabled Devices

You can use the Bluetooth File Exchange application to exchange files between Bluetooth enabled devices. The Bluetooth File Exchange application is located in the Bluetooth folder, in the Extras folder inside the Applications folder on your hard disk.

Make sure the devices you want to exchange files with are discoverable.

(1) Drag the file you want to exchange onto the Bluetooth File Exchange icon. It is located in the Bluetooth folder, in the Extras folder inside the Applications folder on your hard disk.

(2) Click *Search* in the *Send Files* dialog box to find the Bluetooth-enabled devices in range.

(3) Select the name of the device you want to send files to from the list, then click *Send*.

Note: If no devices are found, make sure they are in discoverable mode. To make your computer discoverable, select *Discoverable* in the *Settings* tab of the *Bluetooth* pane of *System Preferences*.

(4) If you are asked for a passkey, enter one and click *Respond*. If the device receiving the files is prompted for a passkey, enter the same passkey on the receiving device and click *Respond*.

(5) If the receiving device is prompted that it is preparing to receive a file, click Accept to receive the files. Depending on the options selected, it may ask to open the file. Click Open to open the file.

(H) Synchronizing a Bluetooth-Enabled Palm Powered Device

With a Computer Using Palm HotSync Manager

If you have a Bluetooth-enabled, Palm Powered device, you can synchronize data between the device and a Bluetooth-enabled Macintosh using Palm HotSyncR Manager.

Make sure you have Palm Desktop 4.0 installed on your computer. For the latest version of the Palm Desktop software, go to www.palm.com/macintosh

(AA) Setting up Your Computer to Synchronize With the Palm Powered Device

(1) Open HotSync Manager, located in the Palm folder in the Applications folder on your hard disk.

(2) Select “bluetooth-pda-sync-port” in the Connection Settings tab.

Note: Make sure Enabled is selected in the HotSync Controls tab.

(AB) Setting Up Your Palm Powered Device to Synchronize With Your Computer

The following setup procedure only needs to be done once. Depending on the device, the names and locations of some menus may be different. For precise instructions, see the documentation that came with your device.

(1) Open HotSync on your Palm Powered device.

(2) Choose Connection Setup from the Options menu.

(3) Click New to create a new connection and name the connection.

(4) Choose PC from the “Connect to” pop-up menu and choose Bluetooth from the Via pop-up menu.

(5) Tap to find Bluetooth-enabled devices and choose your device from the list. Click OK.

(6) Click OK, and then click Done.

(AC) Synchronizing Your Handheld Device With Your Computer

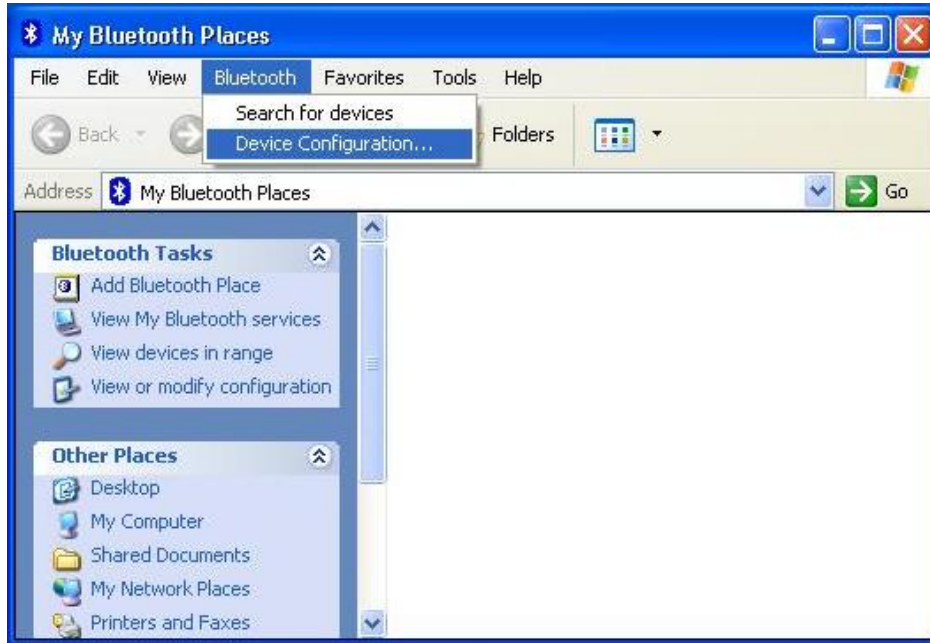
(1) Choose the Bluetooth connection from the Connections pop-up menu.

(2) Click the HotSync icon.

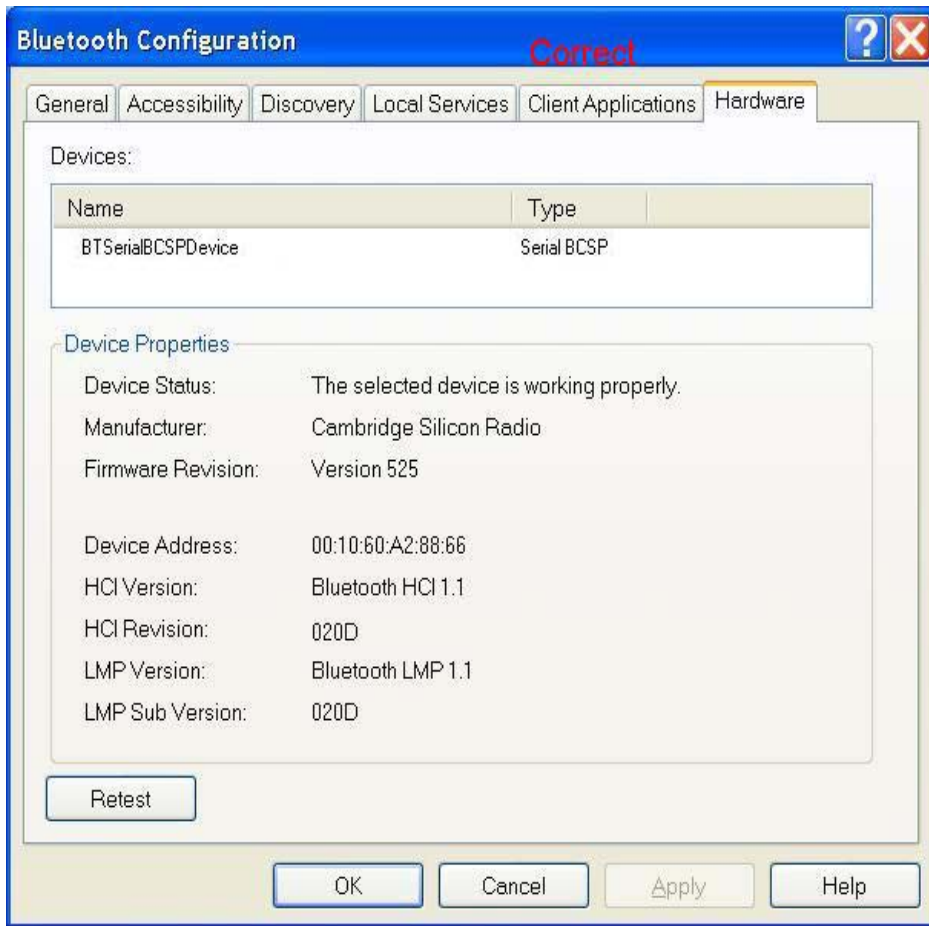
Troubleshooting

Q1: Why couldn't my Bluetooth device find any nearby Bluetooth devices?

A1: (1) Please check that your Bluetooth device is enabled by opening the Bluetooth Configuration window.

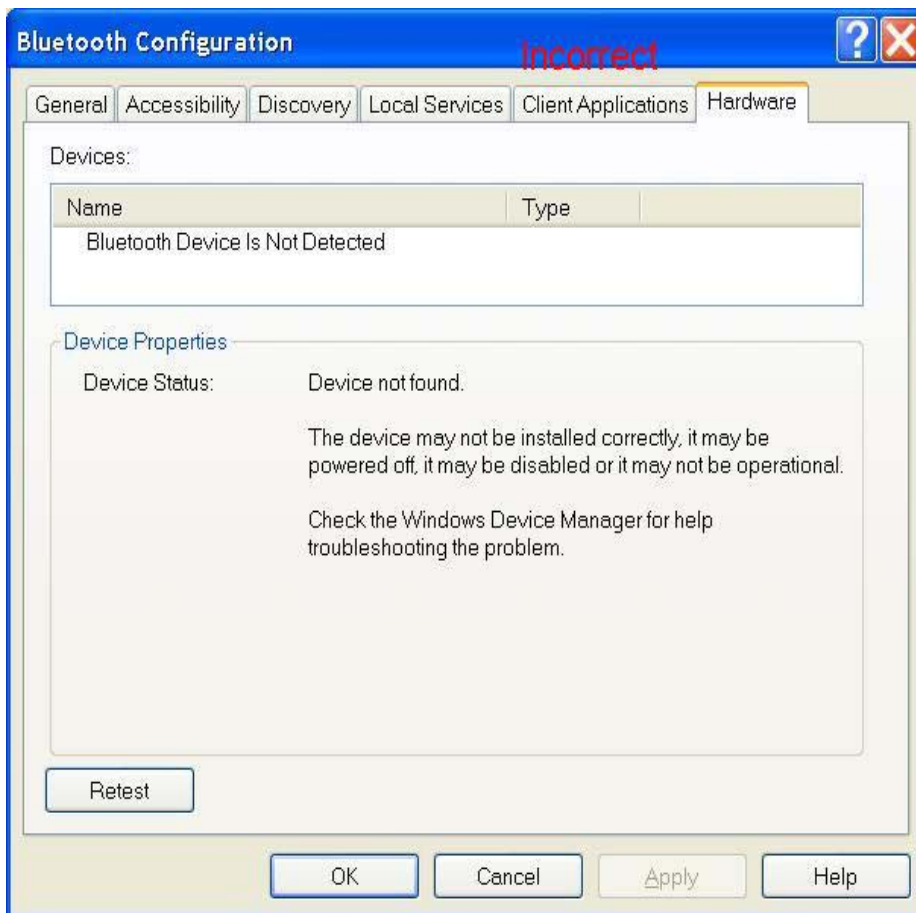


(2) If the Bluetooth device is enabled, you will see something of the following nature.



(3) Otherwise, for USB Bluetooth adapter, please unplug then plug in the USB Bluetooth adapter to enable the device.

For CF and PCMCIA Bluetooth card, please reboot the system with the CF/PCMCIA Bluetooth card securely inserted in the PCMCIA slot.



Q2: Why doesn't my CF/PCMCIA card work after I unplug and later plug-in again?

A2: CF/PCMCIA Bluetooth card is not a plug-n-play device.

Please reboot the system with the CF/PCMCIA Bluetooth card securely inserted in the PCMCIA slot to enable the driver again.

Q3: Why can't I transfer files from Nokia 7650 to my PC?

A3: If you are having trouble sending files from Nokia 7650 to your notebook or PC, follow the steps below:

(1) Execute "regedit" from the Run command (Start->Run)

(2) Locate the key:

HKEY_CURRENT_USER\Software\Widcomm\BTConfig\Services\0004, and locate the entry "Accept other".

(3) Set this key to 0x0000001.

If the "Accept other" key does not exist, simply create it with type DWORD and fill in the value.

Save and exit Regedit. Reboot if necessary, now you should be able to send files from Nokia 7650 to your notebook or PC.

Q4: How come some devices within the connection range may not show up in the list of devices found?

A4: Your device is configured to report only specific types or classes of devices (Bluetooth Configuration Panel > Discovery tab, on your device). The unlisted device is configured to be non-discoverable (Bluetooth Configuration Panel > Accessibility tab, on the un-listed device).

Q5: Cannot connect to a paired device.

A5: Paired devices are always displayed in My Bluetooth Places, even if the remote device is out of range or not powered up.

Verify that the remote member of the pair is within radio range, and powered up, and then attempt the connection again.

Q6: Cannot discover services on an un-paired remote device

A6: The remote device may not be powered up or may be out of range.

- Verify that the remote device is powered up.
- Verify that the remote device is in Connectable mode (Bluetooth Configuration Panel > Accessibility tab).
- Perform a Search for Devices to verify that the device is within range.

Q7: Dial-up networking service does not start.

A7: The Dial-up Networking service will not start unless a properly configured modem is attached to the server.

- Verify that the modem is usable as a local device on the computer to which it is attached. In the Bluetooth Configuration Panel→Local Services tab→ double-click the Dial-up Networking service→Click the down arrow in the Modem field and select the modem that will be used to dial out, click the **OK** button to close the Bluetooth Configuration Panel.

Q8: Determine the Bluetooth device address (BDA) of my hardware device.

A8: In the Bluetooth Configuration Panel, on the Hardware tab, in the Devices section, select the device you want to determine the address of. In the Device Properties section of the dialog box, the fourth entry, Device Address, is the BDA of the selected Bluetooth device.

Q9: Determine the version of the host controller interface (HCI)

A9: In the Bluetooth configuration panel, on the hardware tab, in the device properties Section, the fifth entry provides Bluetooth specification compliance information for the host controller interface.

The sixth entry contains the specification revision information for the host controller Interface, if appropriate.

Q10: Determine the version of the link manager protocol (IMP)

A10: In the Bluetooth configuration panel, on the hardware tab, in the device properties section, the seventh entry provides link manager protocol version number information.

The eighth entry contains the link manager protocol sub-version number information, if appropriate.

Q11: How to find information about the Bluetooth hardware attached to my computer?

A11: In the Bluetooth configuration panel, select the hardware tab.

Q12: Internet connection sharing does not work

A12: This occurs because Internet connection sharing was enabled when Bluetooth was installed (this is a Microsoft windows behavior and is considered proper operation).

To resolve the “problem”:

1. Disable sharing for the Ethernet adapter:

a) Windows control panel > network and dial-up connections

b) Right-click “local area connection,” select properties, and then select the Sharing tab.

c) Clear (uncheck) the box for “enable internet connection sharing for this “Connection” and click ok.

2. Re-enable sharing for the Ethernet adapter; repeat step 1.c.), and select (check) the sharing box.

If offered an option to select an adapter, select “Bluetooth network adapter” (this option will not appear unless more than one adapter is available.) If asked to reboot the computer, do so.

Q13: Test a network access connection.

A13: If the client is hardwired to the LAN, unplug the hardwired connection to ensure that the Test checks the wireless connection rather than the hardwired connection.

If the server has access to the Internet, open a browser on the client and connect to the World Wide Web.

You may also ping the server from the dos prompt.

Q14: Unknown port message when using a Bluetooth serial port.

A14: The “unknown port” error message usually means an attempt was made to connect a port that was in use. Additional Bluetooth serial ports can be added if they are required.

A15: Bluetooth headset doesn't always function under Win98.

Q15: Windows 98 cannot convert audio files with the extension m3u (e.g., myfile.m3u) into the pulse code modulation (pcm) audio format used by Bluetooth headsets; this is a limitation of windows 98.

Other versions of windows (2000, me and XP) can translate m3u audio files into the pcm format.

Possible solutions are:

- Upgrade to a newer version of Windows
- Use an m3u-to-mp3 conversion utility to convert the file(s) into a format that is supported by Windows 98. (Conversion utilities are available as freeware or shareware on the Internet.)

FCC Caution:

- 1. This Transmitter must not be co-located or operating in conjunction with any other antenna or transmitter.**
- 2. FCC RF Radiation Exposure Statement**
The equipment complies with FCC RF radiation exposure limits set forth for an uncontrolled environment.
- 3. Changes or modifications to this unit not expressly approved by the party responsible for compliance could void the user authority to operate the equipment.**