

3. From within a supported Personal Information Manager, select one or more items and then, from the PIM's File menu, select Send to Bluetooth.

Whether sent items are accepted by the remote device is determined by how the remote device's PIM Item Transfer service is configured.

Close a PIM Item Transfer Connection

This application closes the open connection automatically when its task is complete.

Configure PIM Item Transfer

The Bluetooth Configuration Panel > Client Applications > PIM Item Transfer > General tab provides options to configure:

- The application name; to change it, highlight the existing name and enter the new name.
- Enable or disable secure connection. To enable secure connection, place a checkmark in the box.
- How your business card is handled when it is requested by a remote device. The Send My Business Card options are:

Choose a business card as needed-each time a remote device requests your business card you must select a card from your PIM. If you ignore the request the remote device will receive a timeout notice.

Always send the same business card-when this option is selected a dialog appears that allows you to set a default business card, which will be sent automatically when requests are received.

Where to store received business cards. The Received Business Cards options are:

Microsoft Outlook

Outlook Express

Lotus Notes

NOTE: The selected Received Business Cards option does not influence the settings on other PIM-related property pages.

For example, even if the PIM Item Transfer *service* business card option

on this computer is configured to "Do Not Accept", the PIM Item Transfer *application* will still accept business cards that the application has specifically requested via its "Receive" or "Exchange" functions.

Email attachments. The only option is include or do not include attachments with email that is sent or received on this computer using this service.

7. PIM Synchronization setting

Overview

The PIM Synchronization Application is used to synchronize the Personal Information Manager (PIM) database of this computer with the PIM database of a remote Bluetooth device.

The supported PIMs are:

- Microsoft Outlook
- Microsoft Outlook Express
- Lotus Notes.

The supported data types are:

- Business cards
- Calendar items
- Email (with or without attachments)
- Notes.

Configure PIM Synchronization

The Bluetooth Configuration Panel > Client Applications > PIM Synchronization > General tab provides options to configure:

- The application name- to change it, highlight the existing name and enter the new name.
- Enable or disable secure connection. To enable secure connection, place a checkmark in the box.
- The PIM items to be synchronized and the PIM on this computer with which those items should be synced.

NOTE: If synchronization is enabled for a specific item type, but is not enabled for that item type on the remote device, synchronization *WILL NOT* take place for that item.

The data item types which can be synchronized are:

Business cards

Calendar items

Email (with or without attachments-see below)

Notes

Possible synchronization options for each of these data item types include:

Do Not Synchronize-this item type will not be synchronized

Synchronize Microsoft Outlook-this item type will be synced with its matching entry in Microsoft Outlook, regardless of the PIM that contains this

entry on the remote device. If a matching Outlook entry does not exist, it will be created

Synchronize Outlook-Express-this item type will be synced with its matching entry in Express, regardless of the PIM that contains this entry on

the remote device. If a matching Express entry does not exist, it will be created

Synchronize Lotus Notes-this item type will be synced with its matching entry in Lotus Notes, regardless of the PIM that contains this entry on the

remote device. If a matching Notes entry does not exist, it will be created.

NOTE: All choices are not available for all items. For example, Notes items can only be synchronized in Microsoft Outlook, therefore Lotus Notes and Outlook Express do not appear as options in the "Notes" item shortcut menu.

Personal Information Managers that are not installed on this computer do not appear as options in the shortcut menus.

Email attachments. The only option is include or do not include attachments with email that is sent or received on this computer using this service.

8. Serial port setting

The Bluetooth Serial Port service allows two Bluetooth devices to establish a wireless connection through virtual communications ports and then use that connection as if it were a hardwired serial cable between the devices.

To establish a Bluetooth serial port connection:

Connections are initiated from the client:

1. On the client, in the Folders pane of **"My Bluetooth Places"**, select **"Entire Bluetooth Neighborhood"**.
2. In the right pane of **"Entire Bluetooth Neighborhood"**, right-click anywhere *except on a device name* and select **"Refresh"** from the pop-up menu.
3. In the Folders pane of **"My Bluetooth Places"**, right-click the server you want to establish a connection with and select **"Discover Available Services"** from the popup menu to update the available services list. The available services will be displayed in the right pane of **"My Bluetooth Places"**.
4. In the right pane of **"My Bluetooth Places"**, double-click **"Bluetooth Serial Port"**. A dialog box appears that contains the communications port number assigned to this connection by the client. The application that will use this connection must be configured to send data to this port.

Depending on the security configuration, the dialog box that provides communications port information may not appear until after Authentication and Authorization have been accomplished.

The application on the server must be configured to use the correct communications port.

To determine the communications port being used by the service:

- * On the server, in the Folders pane of **"My Bluetooth Places"**, right-click **"My Device"** and select **"Properties"** from the pop-up menu
- * In the **"Bluetooth Configuration Panel"**, select the **"Local Services"** tab.
- * Double-click the **"Bluetooth Serial Port"** service to display its **"Service Properties"** dialog box. The **"Service Properties"** dialog box shows the communications port the connection is using.

To close a Bluetooth serial port connection

Connections are normally closed from the client:

* On the client, in the Folders pane of "**My Bluetooth Places**", select (highlight) the device that is providing the "**Bluetooth Serial Port**" service.

* In the right pane of "**My Bluetooth Places**", right-click "**Bluetooth Serial Port**" and then select "**Disconnect Bluetooth Serial Port**" from the pop-up menu. Though not recommended, connections can also be closed from the server:

* On the server, in the Folders pane of "**My Bluetooth Places**", select (highlight) "**My Device**".

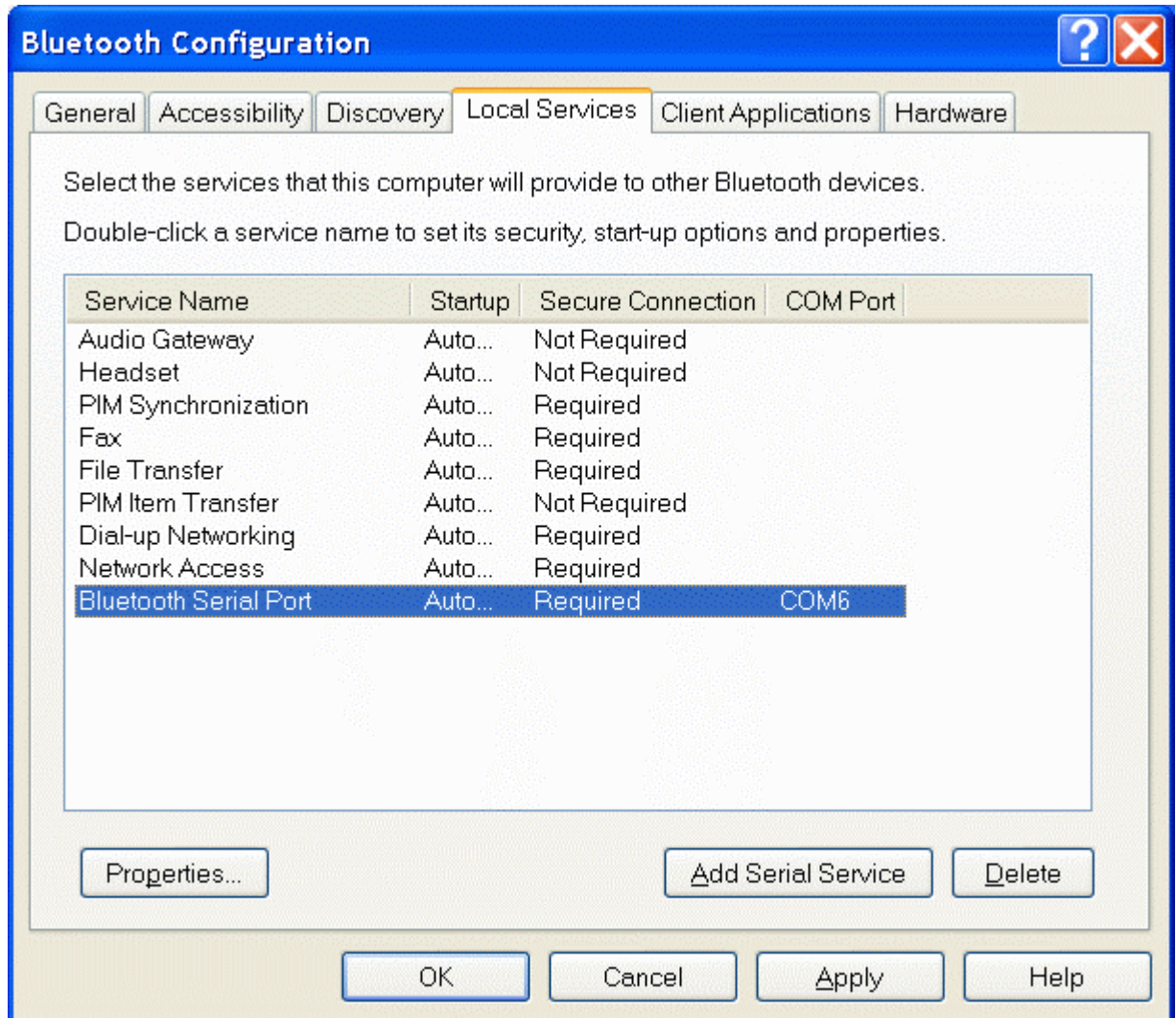
* In the right pane of "**My Bluetooth Places**", right-click "**Bluetooth Serial Port**" and then select Stop to close the service. The service must be re-started before it will be available to remote devices (right-click Bluetooth Serial Port and select Start from the pop-up menu).

9. ActiveSync setting

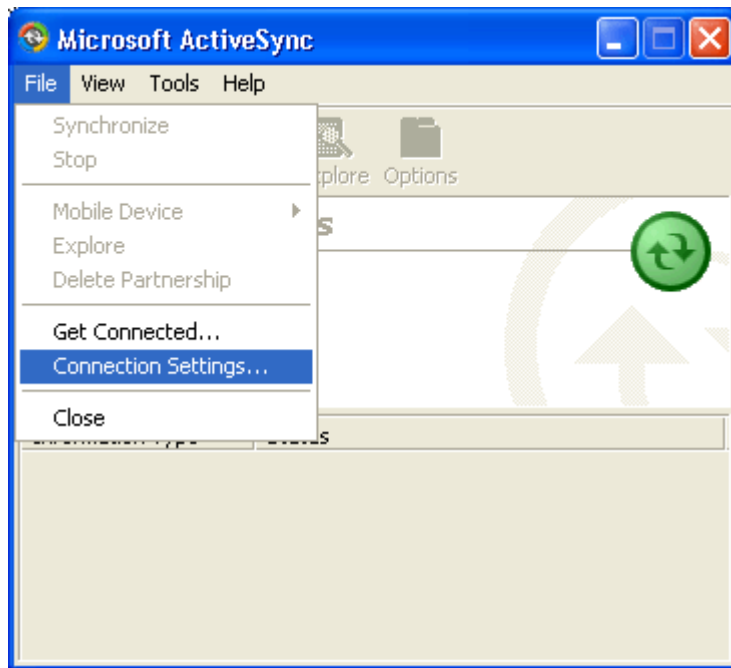
ActiveSync setting for Windows

1. Right-click on **Bluetooth Configuration** icon from the toolbar in the desktop window. Select **Setup** and then open **Configuration** window.

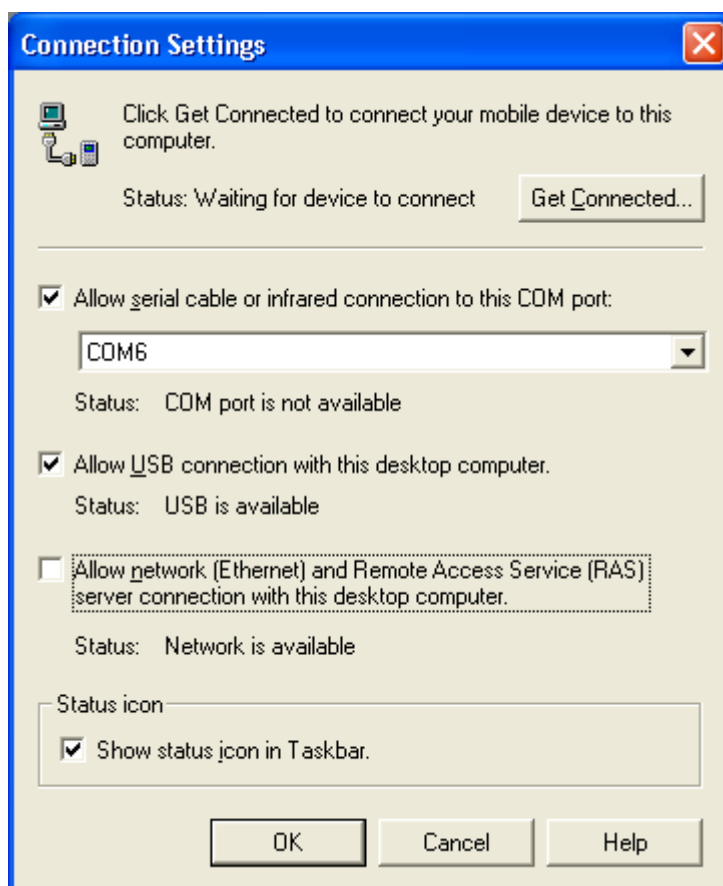
2. Select **Local Service** tab from the Bluetooth Configuration window. In the **Service Properties** window, please learn by heart the current COM port this computer uses, for example: COM 6, in order to identify this value with the configuration of Microsoft ActiveSync later.



3. In the *Microsoft ActiveSync* window, select **Connection Settings...** from drop-down list of File menu.



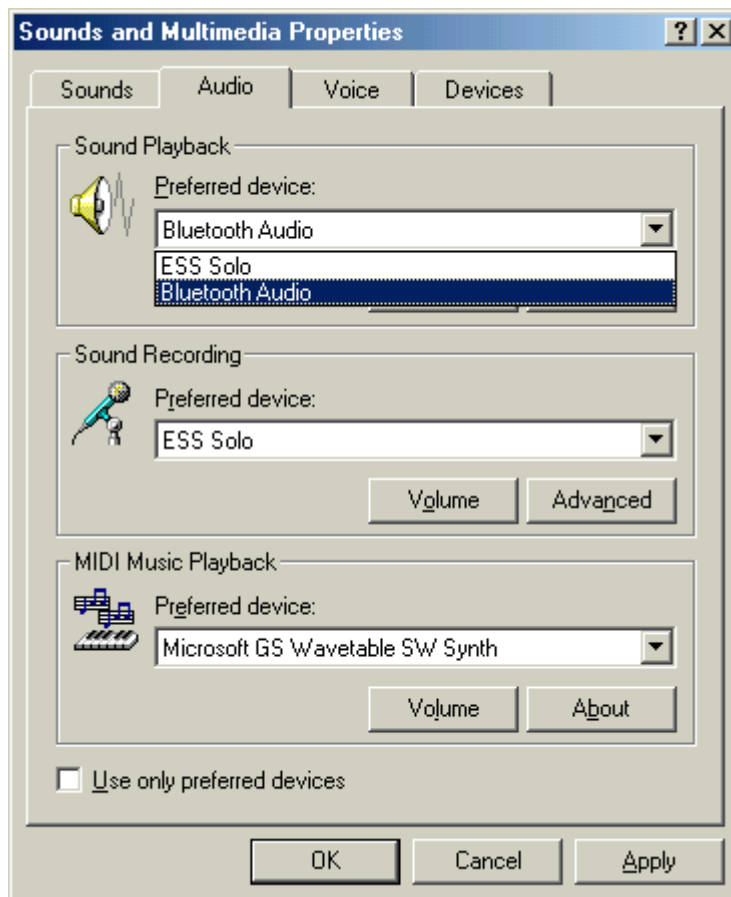
4. Choose the same COM port. (in this case, it is COM 6 that Bluetooth Serial port uses shown in the Step 2.)



5. Please refer to the PDA ActiveSync Setting to complete the Bluetooth ActiveSync Configuration Process

10. Audio Gateway setting for windows

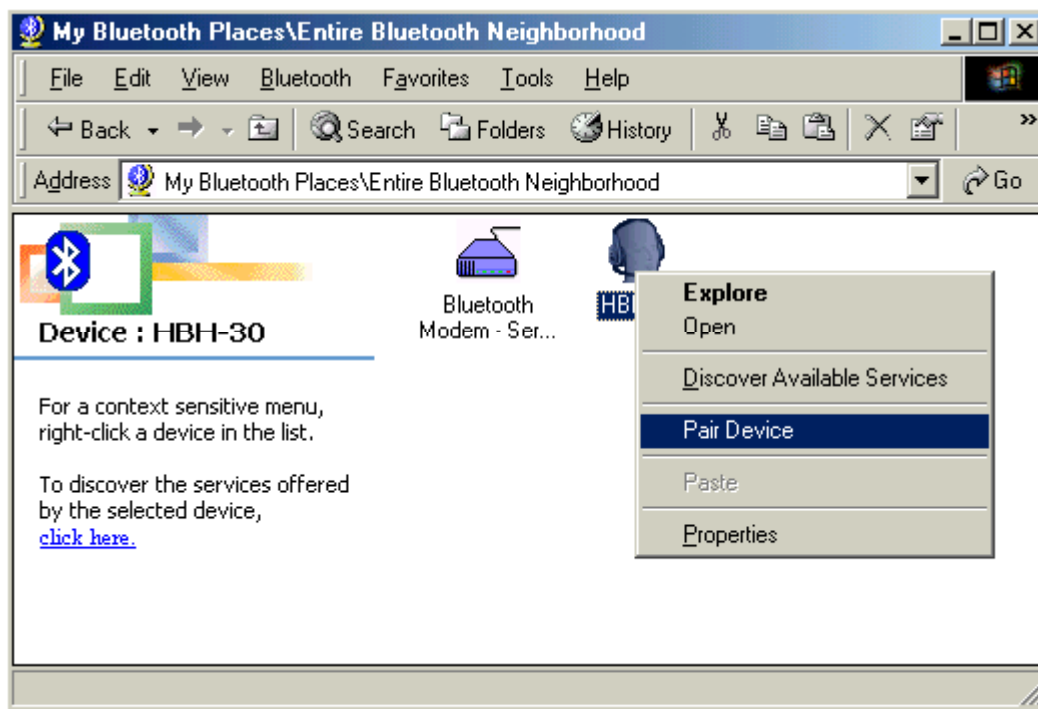
The Audio Gateway Application allows a remote Bluetooth device to use this computer's microphone and speakers as the remote device's audio input and output devices.



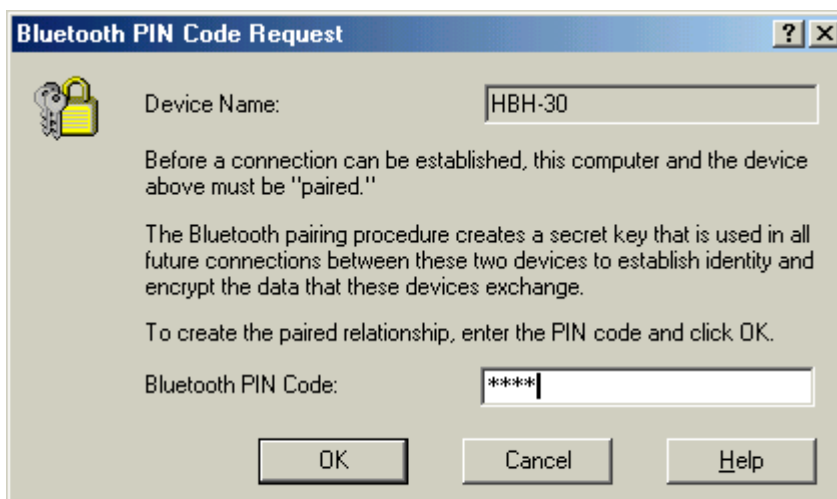
*Remember please switch your Audio device to "**Bluetooth Audio**" from control panel.

Open a connection to the Audio Gateway service that is provided by another Bluetooth device using one of these techniques:

- Windows system tray, Bluetooth icon
- From Bluetooth Explorer
- Using the Bluetooth Setup Wizard



From Bluetooth Explorer to connection your headset device.



Key in headset pair key or PIN code. (Refer to the Headset's user's manual for reference)

Close an audio gateway connection:

If the connection was established via the Bluetooth icon in the Windows system tray; click the Bluetooth icon, select Quick Connect, Audio Gateway and then select the device that is providing the service (active connections have a checkmark in front of them).

or

No matter how the connection was created, In My Bluetooth Places, right-click the service name and select Disconnect.

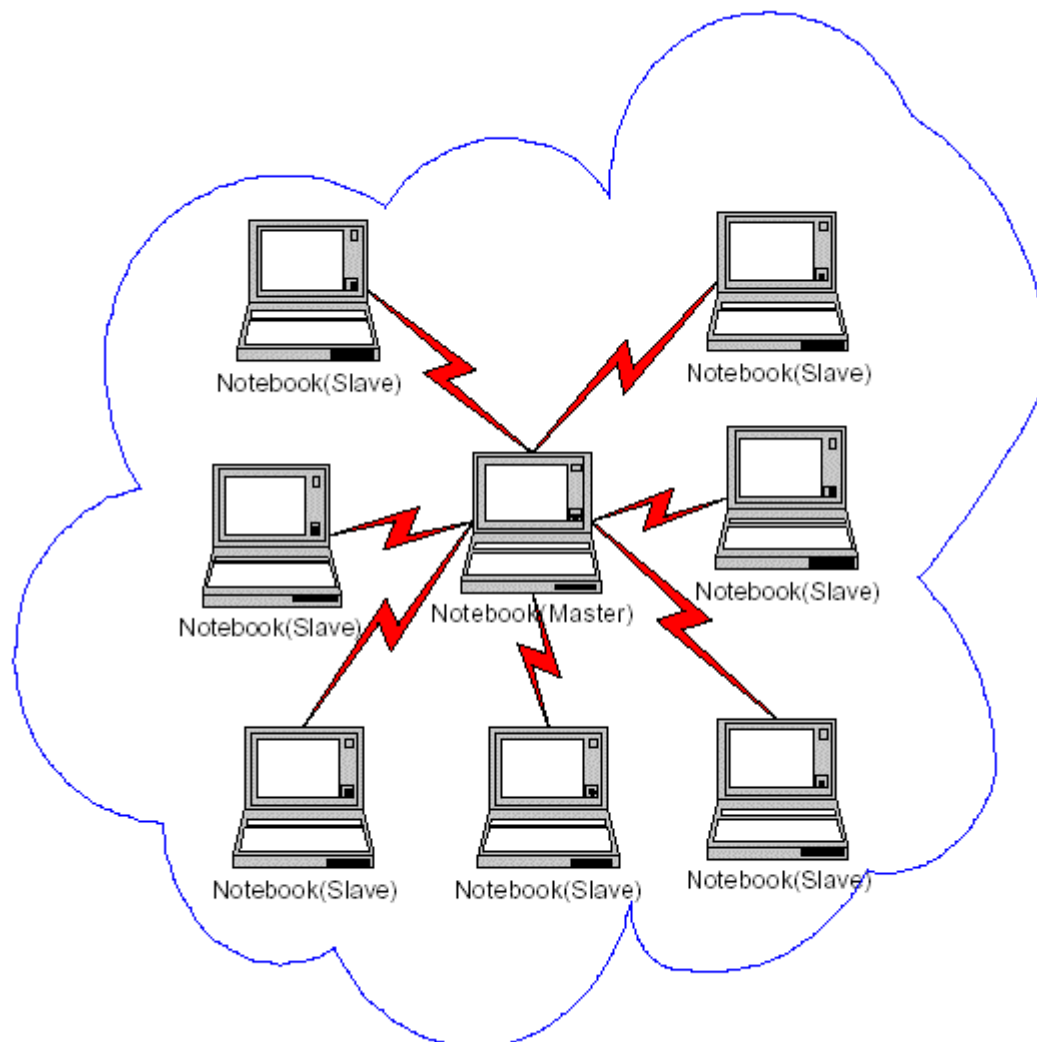
Configure

The **Bluetooth Configuration Panel > Client Applications > Audio Gateway > General** tab provides options to configure:

- The application name-- to change it, highlight the existing name and enter the new name.
- Enable or disable secure connection. To enable secure connection, place a checkmark in the box.

11. Personal area network setting for windows

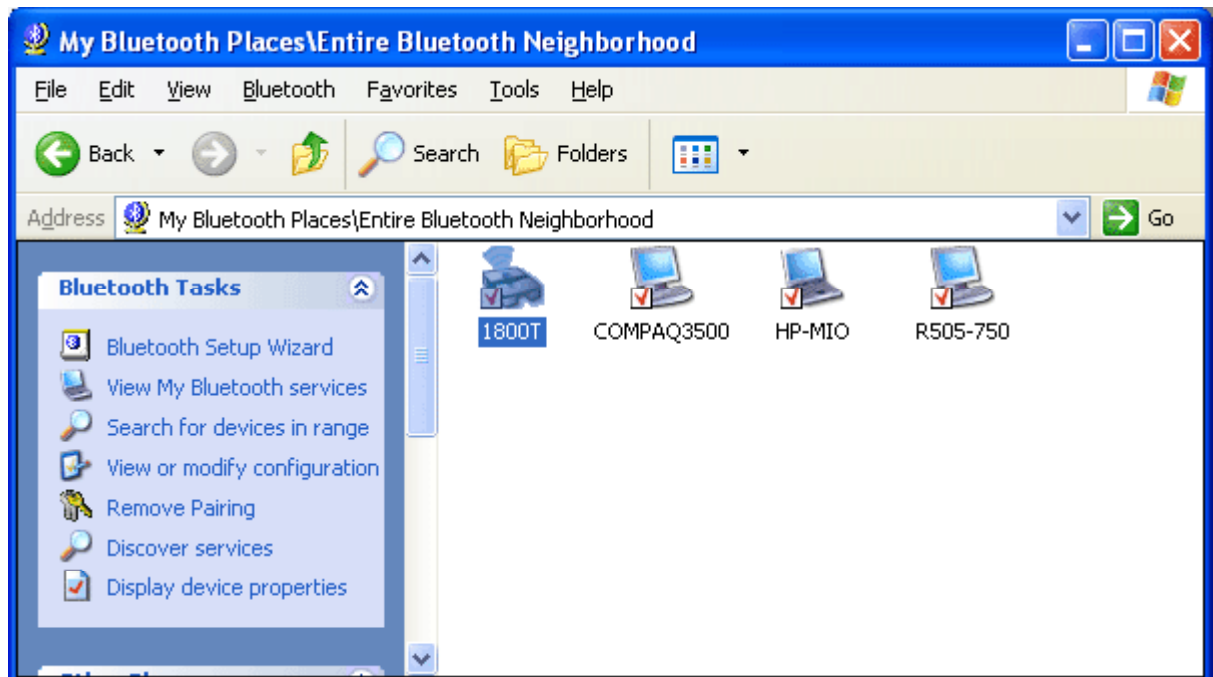
The Personal Area Networking (PAN) chapter will show you how two or more Bluetooth enabled devices can form an ad-hoc network and how the same mechanism can be used to access a remote network through a network access point.



How to setup an Ad-hoc Network

1. On the client, in the Folders pane of **"My Bluetooth Places"**, select **"Entire Bluetooth Neighborhood"**.

2. In the right pane of "**Entire Bluetooth Neighborhood**", right-click anywhere *except on a device name* and select Refresh from the pop-up menu.



3. In the right pane of "**My Bluetooth Places**", right-click the server that will provide the Networking Access Service and select Discover Available Services from the pop-up menu to update the available services list. The available services will be displayed in the right pane of "**My Bluetooth Places**".



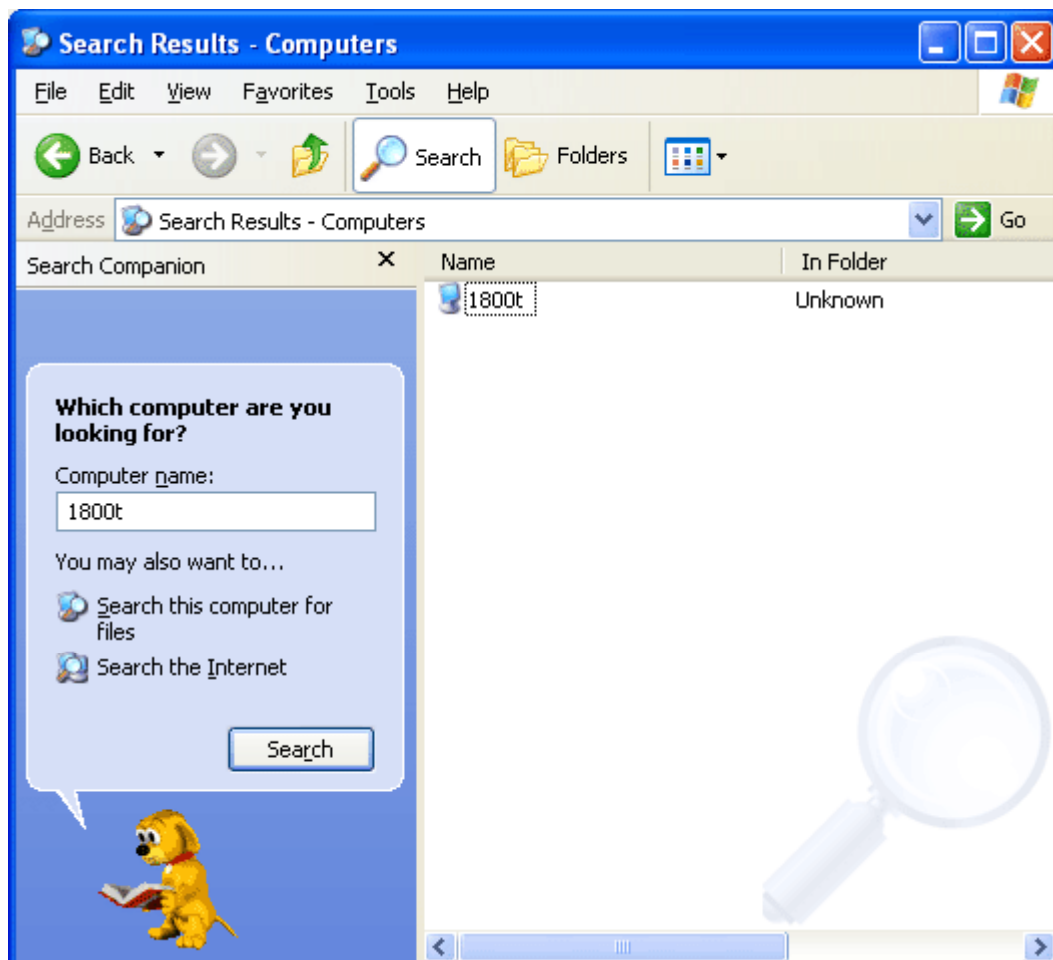
Double click Network Access to establish a PAN network.

If the system pops up a "**Bluetooth PIN Code Request**" window please key in

the same passkey or PIN code between the two devices.

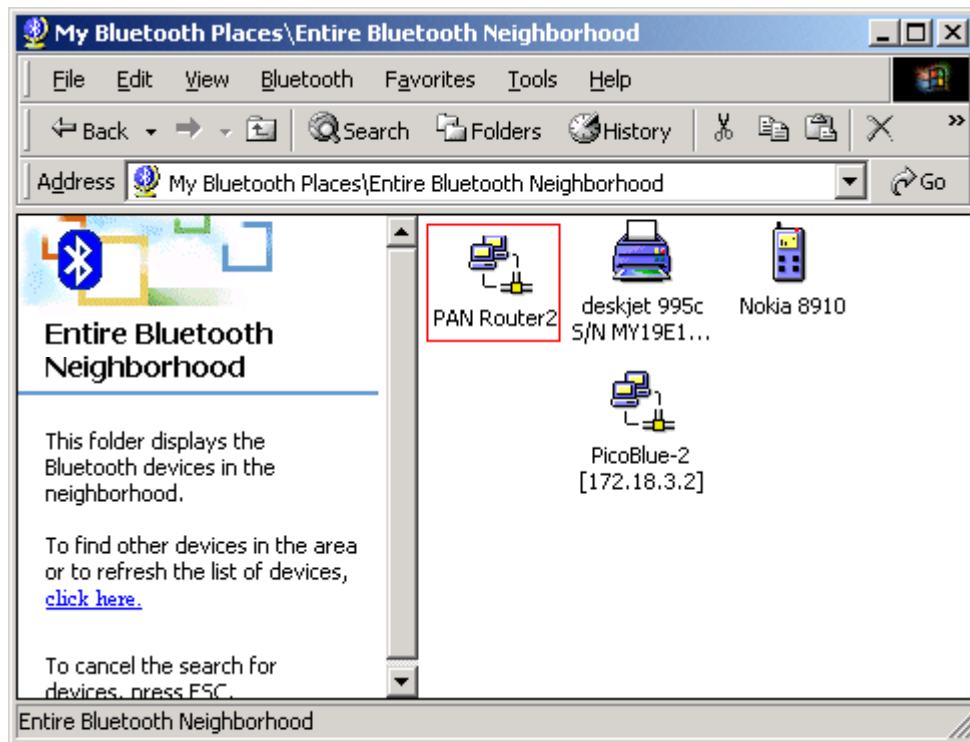


Once connected, you can check your Bluetooth PAN network neighborhood from the file explorer or by the "**Search Computers**" function.

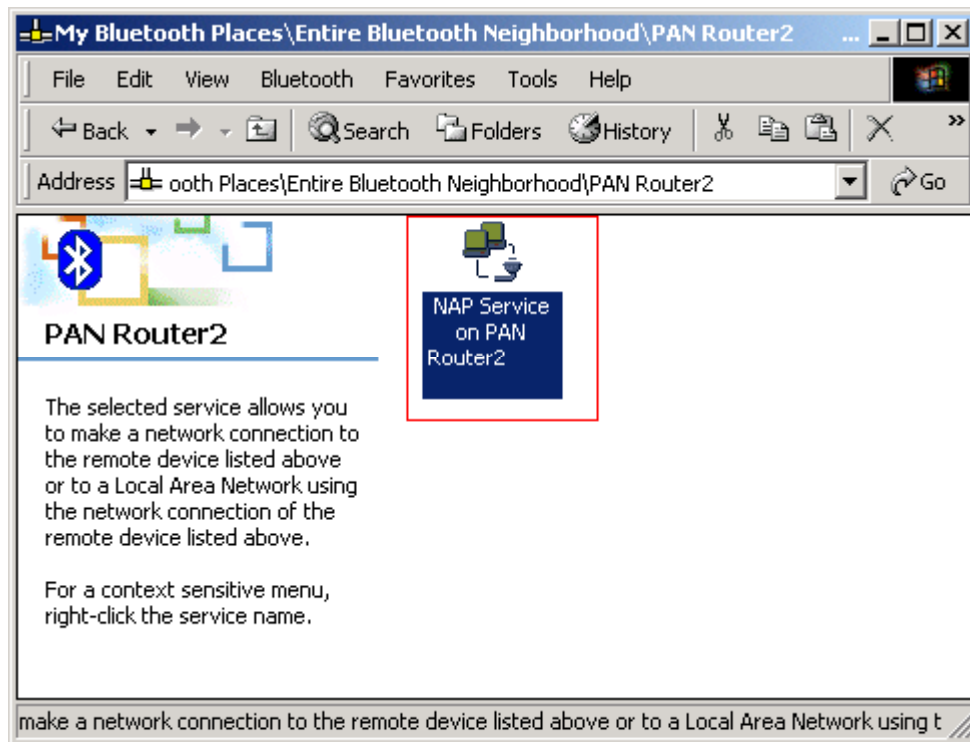


How to setup with Bluetooth Network Access Point

The Bluetooth Software makes it easy to join an existing personal network, hosted by another Bluetooth device (PocketPC, desktop, etc.) From the **My Bluetooth Places**, choose **Entire Bluetooth Neighborhood**, and select the Bluetooth device that you want to establish a PAN connection and double click the device icon.



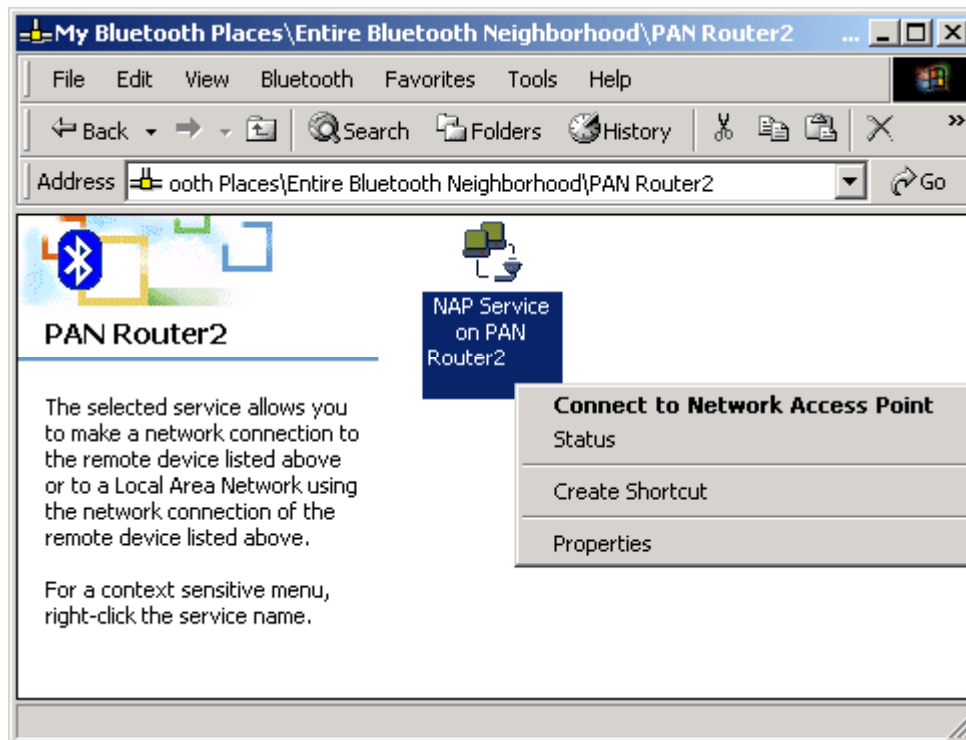
It will list out all the available services of this device, please select the NAP Service.



Right click the NAP Service and select "**Connect to Network Access Point**", your PC will get an IP address from the Network Access Point.

At this moment, you might be prompted to enter the IP network settings; if this is the case, choose "**Obtain an IP address automatically**" from your Bluetooth Network TCP/IP setting.

After selecting the host, a connection will then be established between your PC and the host over the personal network.



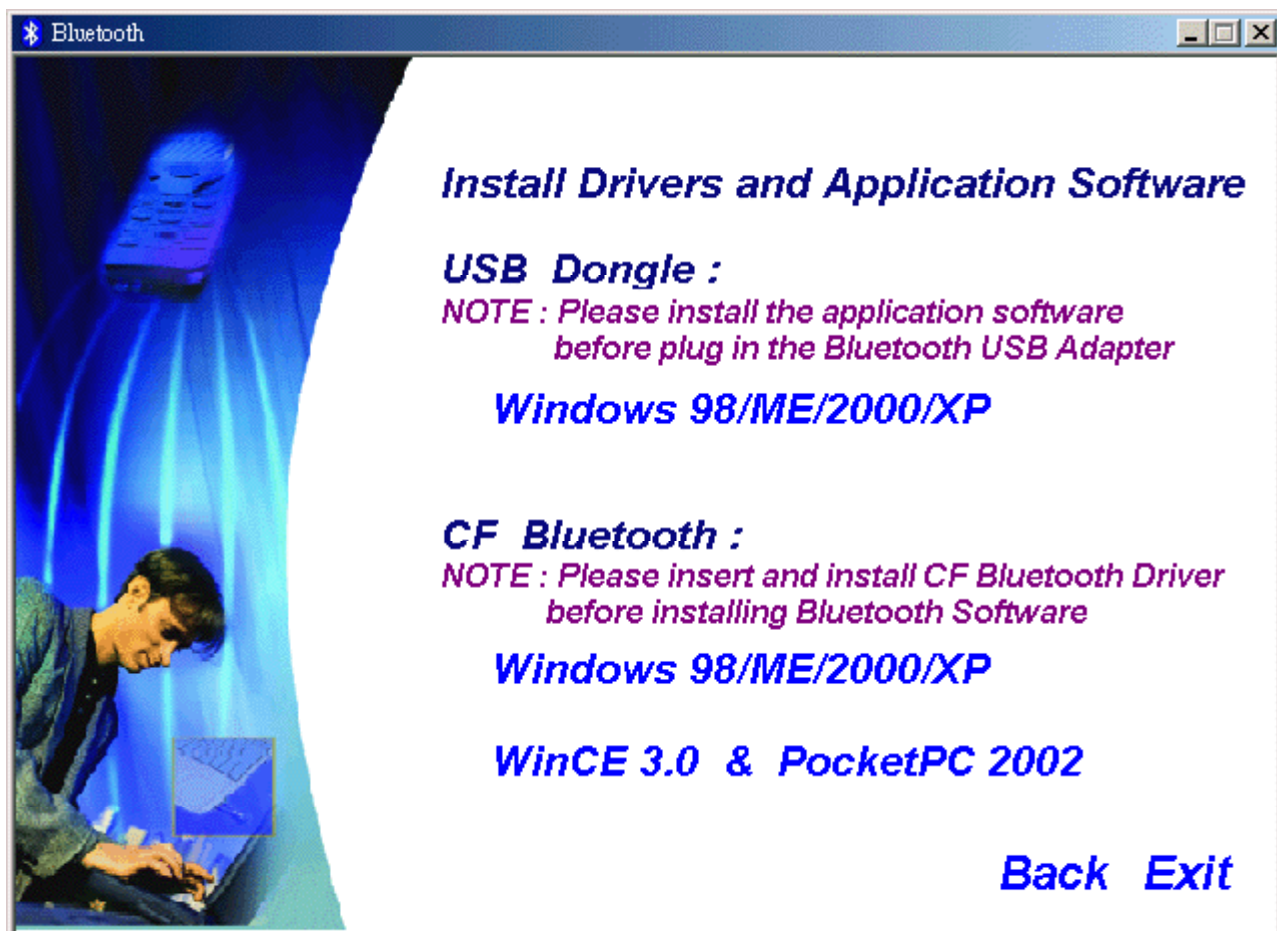
Installing Bluetooth software for WinCE

(1) Make sure your PDA is connected with your PC, **CF Bluetooth card securely sits in the PDA'S CF slot**, and the installation disk in your PC's CD-ROM, the Setup program should launch automatically.

If Setup does not launch automatically, use Windows Explorer to navigate to the appropriate CD-ROM drive and double click on "**bsetup**".

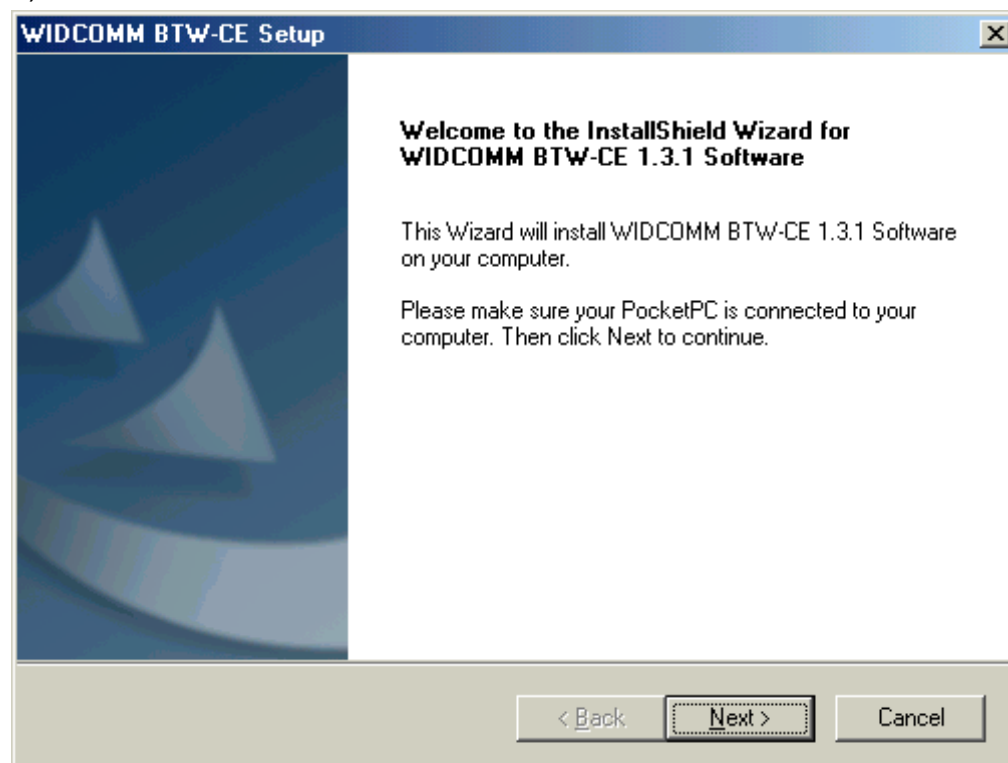


(2) Select "WinCE 3.0 & PocketPC2002" at Setup dialog box.

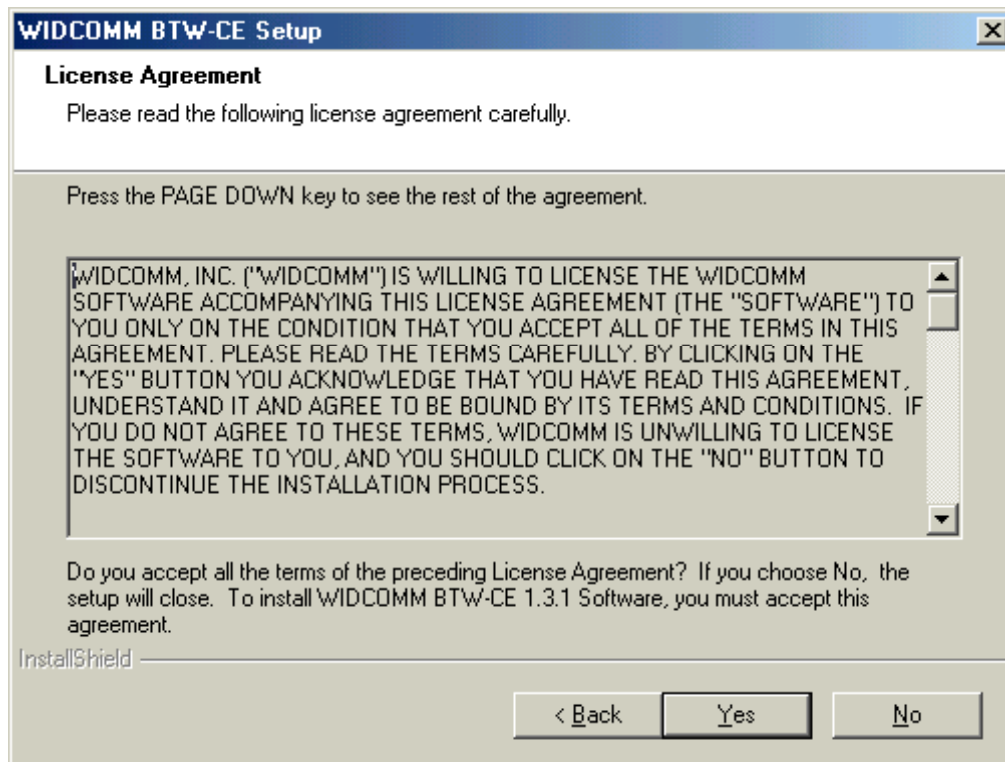


(3). Follow the instructions on the screen:

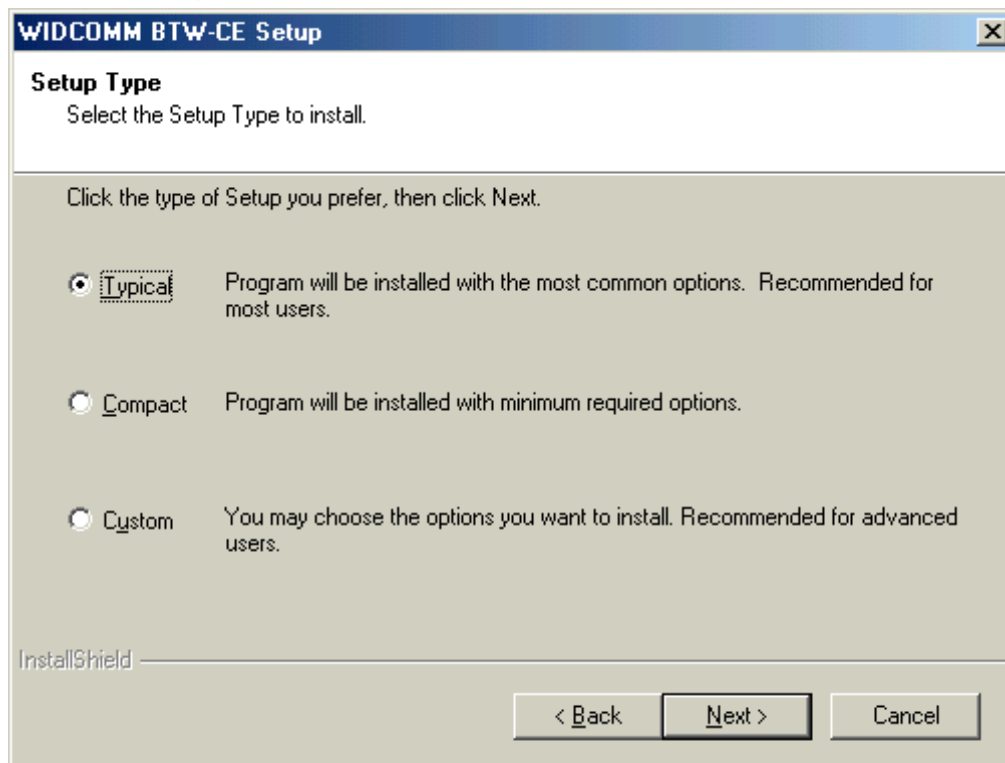
a) On the *Welcome* screen, click the **Next** button.



b) When the *License Agreement* screen is displayed, read the License Agreement, then click "**Yes**" to go to the next step.

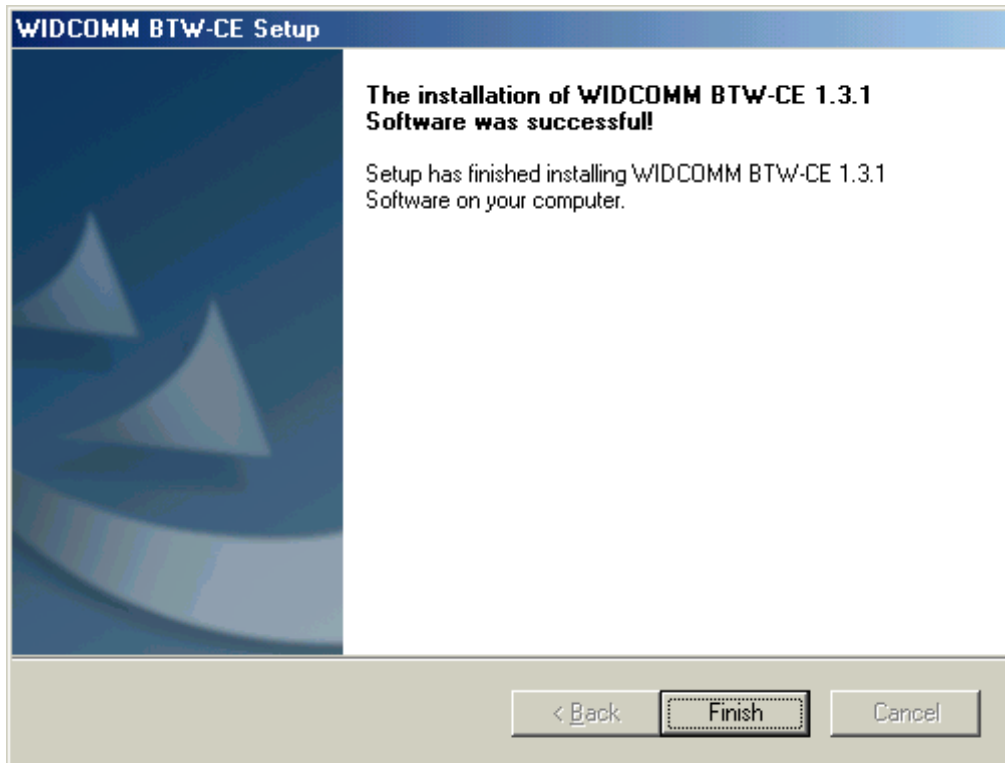


c) On the *Setup Type* screen, click "**Typical**" and click "**Next**" to accept the default setting.



d) Then system will start installing all the necessary setup files.

e) When the installation is complete, click the **"Finish"** button on the *Completed* screen.



f) On the handheld (PDA) device:

Tap **"Yes"** to accept the default directory and install the software.

g) A Welcome screen will be shown with basic instructions to use BTW-CE .

h) Check off **"Add a shortcut in the Start menu"** in order to have access to the **"Bluetooth Manager"** from the Start menu



i) Perform a **"soft"** reset to the handheld computer. Refer to your device's documentation for the exact procedure.

NOTE:

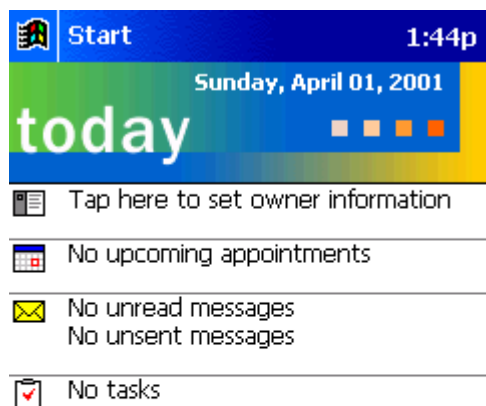
A soft reset leaves installed applications and stored data intact, and simply restarts the device.

A hard reset deletes ALL downloaded applications on the handheld. See the handheld computer's documentation for additional information.

Bluetooth Control Panel: Configuring BTW-CE

BTW-CE provides a Control Panel to adjust Bluetooth settings.

To access the Control Panel, tap the Bluetooth icon in the lower-right corner of the Today screen.



BTW-CE can have multiple saved configurations. Individual configuration sets are saved in profiles, which can be quickly loaded to meet the appropriate situation.

The Control Panel has seven tabs. All tabs are not visible on the screen at the same time; use the arrows to the right of the tab names to scroll back-and-forth and expose the different tabs.

There are seven tabs in the control panel:

* General

User profile selection

Bluetooth status (ON/OFF) indicator

Hardware power control (ON/OFF)

Shortcut to the Bluetooth Manager.

* Accessibility

Set the device name

The card's Bluetooth Device Address (Bd_Addr)

Determine which remote devices are allowed to connect

Determine whether this PocketPC can be seen by other remote devices.

* Service tabs-BTW-CE can provide four services. They are:

File Transfer-Sets the highest-level of directory on this PocketPC that the remote devices will have access to.

Information Exchange-Sets the default business card (Pocket Outlook contact entry)

Serial Port-Bluetooth serial port information

Dial-up Networking-configure the COM port, baud rate and flow control.

* About-there are no configurable options on this tab.

Software version information

Copyright information

Website and Technical Support links

There are three options on this screen:

* **Current Profile:** to change the active profile, tap the down-arrow in the "Current profile:" field and select the new profile from the drop-down list. The current profile will be saved, and the settings from the selected profile will be loaded. To add, delete, or rename a profile, tap.

* **Bluetooth Status:**

Integrated Bluetooth hardware.

External Bluetooth hardware (Compact Flash or PC expansion card)

* **Bluetooth Manager:**

Tapping on this shortcut starts the Bluetooth Manager.

When Bluetooth is OFF, no connections, incoming or outgoing, are possible.

When Bluetooth is ON, Bluetooth is always "Up" and battery drain is significantly greater than when Bluetooth is disabled. *To conserve battery power, do not enable Bluetooth when it is not being used.*

Bluetooth: General

Current profile

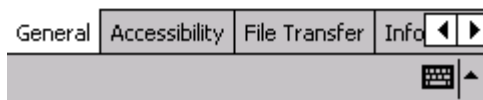
Default

Bluetooth status

Bluetooth is ON

Remove the Bluetooth card to turn it off.

Use the [Bluetooth Manager](#) to set connections.



Accessibility page displays device information. You can modify your device name in here. This name will show on other Bluetooth devices.

Bluetooth: Accessibility

Device Identification

Name: CE Device

Address: 00:10:60:29:00:0A

Accessibility

- Allow other devices to connect
 - All devices
 - Paired devices only
- Other devices can discover me



All information on this tab is saved with the active profile, including the device name.

The options on the Accessibility tab are:

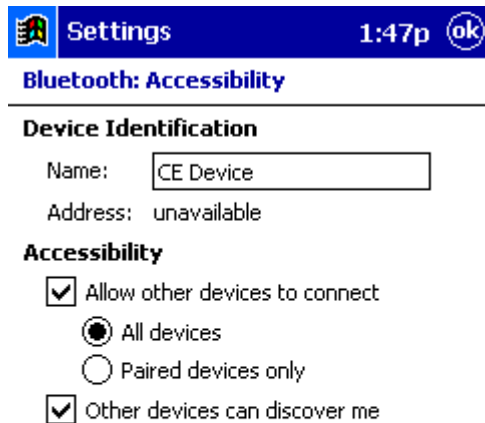
* Device Identification:

Name--the name of this device, as displayed to remote devices when the associated profile is active. To change the device name associated with this profile, highlight the name and enter the new name.

Address--the Bluetooth Device Address (Bd_Addr) of this device. This information is permanently associated with the Bluetooth hardware during the manufacturing process and cannot be changed.

* Accessibility:

Allow other devices to connect, when this option is enabled, other devices are permitted to connect to this device. Two mutually exclusive sub-options provide additional refinement. They are:



*All devices--select this option to allow all devices to connect.

*Paired devices only--select this option to allow only devices that have a paired relationship.

Other devices can discover me, when this option is enabled, other Bluetooth devices can see and report this device. Even though remote devices cannot discover this device unless this option is checked, if a remote device has this device's Bluetooth Device Address, that device may still be able to connect to this device.

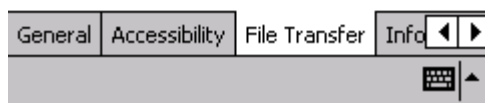
Bluetooth: File Transfer

About this service

- Enable service
- Authorization required
- Authentication (Passkey) required
- Encryption required

My shared folder

{My Documents}\Business



Click File Transfer page is displayed your CE device shared folder information, you can modify your CE device shared folder here. The options on this tab only affect incoming File Transfer connections. There is one additional configurable item: **"My shared folder"** which allows you to specify the default File Transfer directory, the highest level directory on this PocketPC that remote devices have access to. To change the default File Transfer directory, tap folder navigate to the desired directory, and then tap the **"OK"** bottom.

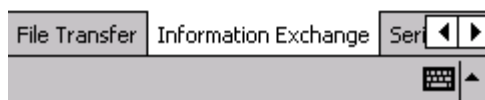
Bluetooth: Information Exchange

About this service

- Enable service
- Authorization required
- Authentication (Passkey) required
- Encryption required

My business card (vCard)

(None)



Information Exchange page displays your business card. You can set your business card in here.

The Common Options on this tab only affect *incoming Information Exchange connections*.

There is one additional configurable item: "**My business card (vCard)**".

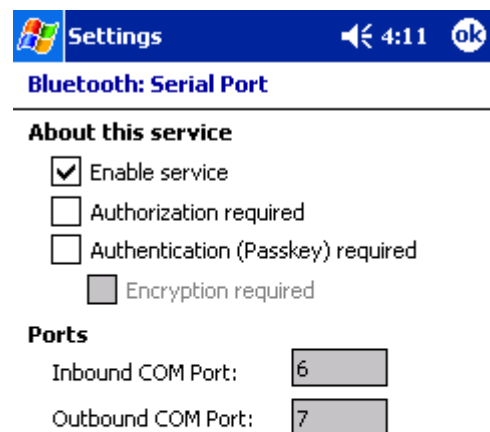
The "**My business card**" information comes from a selected record in the Contacts list of Pocket Outlook. Information from the selected record is sent to remote devices on request. It is also the contact information that is sent when you select "**Send your business card to one or more recipients**" while using Business Card Exchange.

The default selection is "**none**" (no information).

To select a vCard, tap , choose a contact from the list, and then tap OK.

To discontinue sending contact information when it is requested, tap , choose "**(none)**" from the list, and then tap OK.

If you reach the contacts list by mistake, tap OK to return to the previous screen.



Serial Port page displays your Serial Port setting.

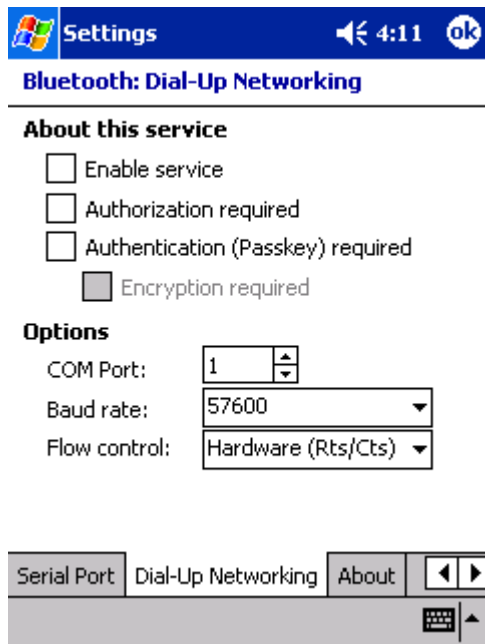
The configurable options on this tab only affect *incoming Serial Port connections*.

All of the Common Options (see Section 2.3.1) are available.

There are two additional, non-configurable items:

- * Inbound COM Port: the local communications port that is used for inbound serial connections.
- * Outbound COM Port: the local communications port that is used for outbound serial connections.

The Inbound and Outbound COM ports are permanently assigned and cannot be changed.



Dial-Up Networking page displays your Dial-Up Networking setting. You can change your COM port, baud rate and Flow control here.

There are three additional items:

- * COM Port: select the communications port to be used.
- * Baud rate: tap the down-arrow and select a baud rate from the drop-down list. The options range from 1,200 to 115,200 baud, in nine steps.
- * Flow control: tap the down-arrow and select the type of flow control to be used from the drop-down list.

The options are:

Off

Hardware (Rts/Cts).

Bluetooth: Dial-Up Networking

About this service

- Enable service
- Authorization required
- Authentication (Passkey) required
- Encryption required

Options

COM Port:

Baud rate:

Flow control:



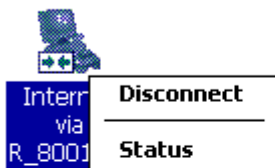
Connection Open-Context Sensitive Menu Options

From the My Connections screen, tap and hold a connection icon that is associated with an OPEN connection to access the context sensitive menu.

The Menu options are:

- * Disconnect-close the open connection
- * Status-select this option to display the Connection Status screen (double-tap default).

Bluetooth
My Shortcuts



Connection Status Screen

This screen displays:

The connection name

The remote device's name

The connection status: Connected/Not Connected

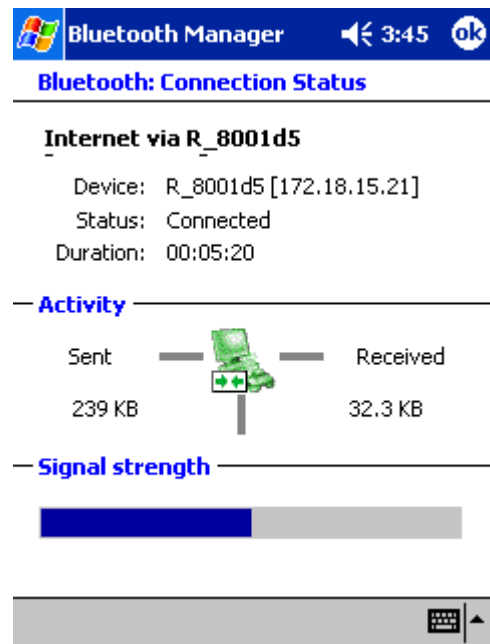
The length of time the connection has been active

Activity information:

The amount of data sent

The amount of data received.

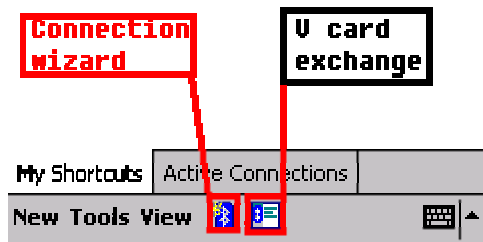
A graphic signal strength indicator.



Network sharing setting for WinCE

Explore Bluetooth device in your range

1. You can check all the available Bluetooth devices by using "**Connection Wizard**". To start "**Connection wizard**", please tap the "**star B**" icon at bottom bar of the "**Bluetooth Manager**".



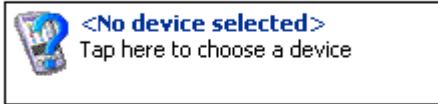
2. There are many connection types to choose from in the "**Connection Wizard**". The first connection type explores all available Bluetooth devices within the Bluetooth connectivity range. Other connection types explore specific services in the Bluetooth device, e.g. Dial-Up, Information Synchronization (ActiveSync), File transfer.. etc. Please click "**Explore a Bluetooth device**" then click "**Next**".



3. Follow the "**Connection Wizard**", tap the device selection box in the middle of the screen, it will jump to the next page.

Bluetooth Connection Wizard
Explore a Bluetooth device

Device:



How to use this screen

To select a device, tap inside the device selection box above. After the list appears, choose a device.

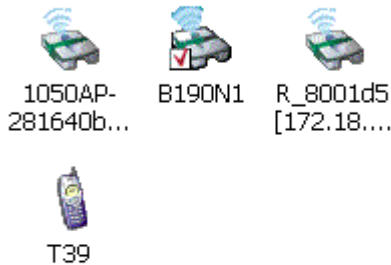
Tap 'Next' to continue or 'Back' to return to the previous screen. To exit this wizard without completing the connection, tap 'Cancel'.



4. All the Bluetooth enabled devices within the discoverable range will be shown.

In this example we will select the access point icon "R_8001d5[172.18...".

Bluetooth Browser
Please Select a device:



5. All the available services for this device are shown as below. Select the service that you'd like to use and create a connection shortcut for this device, then tap "Next" to the next step.



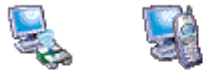
8. Tap "**Finish**" to create a shortcut to the Access Point on the Bluetooth manager.



9. If you want to use this service, double-tap the icon, or tap-and-hold the connection icon and select "**Connect**" from the menu. Then you can access the Internet.

Bluetooth

My Shortcuts



R_8001d5 T39: Dial-
[172.18.... up
LAN Acc... Networki...

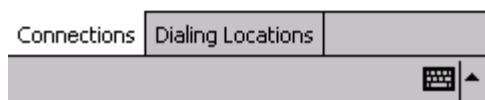
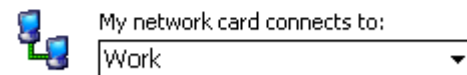
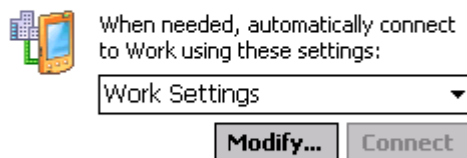


Note: Consult the MIS personnel in your company for proxy setting if necessary.

For setting up the Proxy to surf the Internet via a Bluetooth Access Point:

1. Click on "Start" button, click "Settings", and "Connections" tab. Click on the "Connections" icon.
2. Change the "My network card connects to:" drop-down list to "Work", change the "When needed, automatically connect to Work using these settings:" drop-down list to "Work Settings", and click "Modify".

Connections



3. Click on the "Proxy Settings" tab, and select both checkboxes, then enter the Proxy IP address obtained from your MIS personnel.