



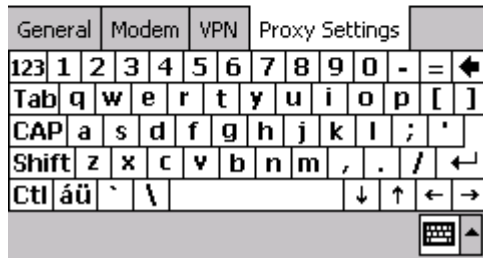
Work Settings

- This network connects to the Internet
 - This network uses a proxy server to connect to the Internet

Proxy server:

172.18.0.11

Advanced...




File transfer setting for WinCE

File transfer service lets you transfer pictures, documents or music files to other Bluetooth devices. Starting file transfer by using "**Connection wizard**" from Bluetooth manager.

1. At "**Connection wizard**", tap "**Browse files on a remote device**", then tap "**Next**".



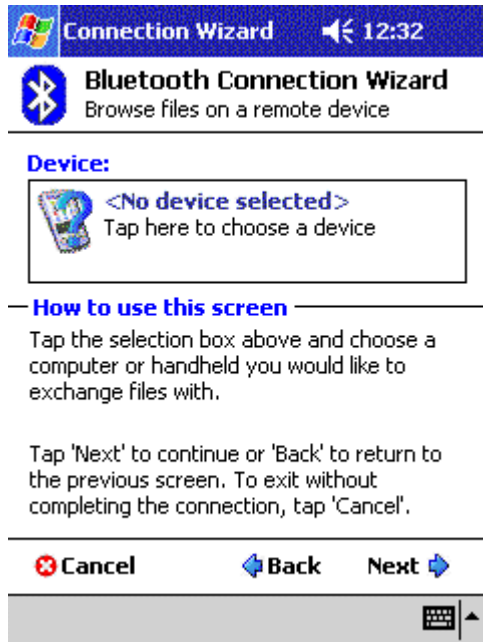
Bluetooth Connection Wizard

-  **Partner with a cell phone**
Establish a partnership with a cell phone and setup the Bluetooth services it offers.
-  **ActiveSync via Bluetooth**
Setup an ActiveSync partnership with a Bluetooth enabled computer.
-  **Browse files on a remote device**
Connect to a remote Bluetooth device to list, send and receive files.

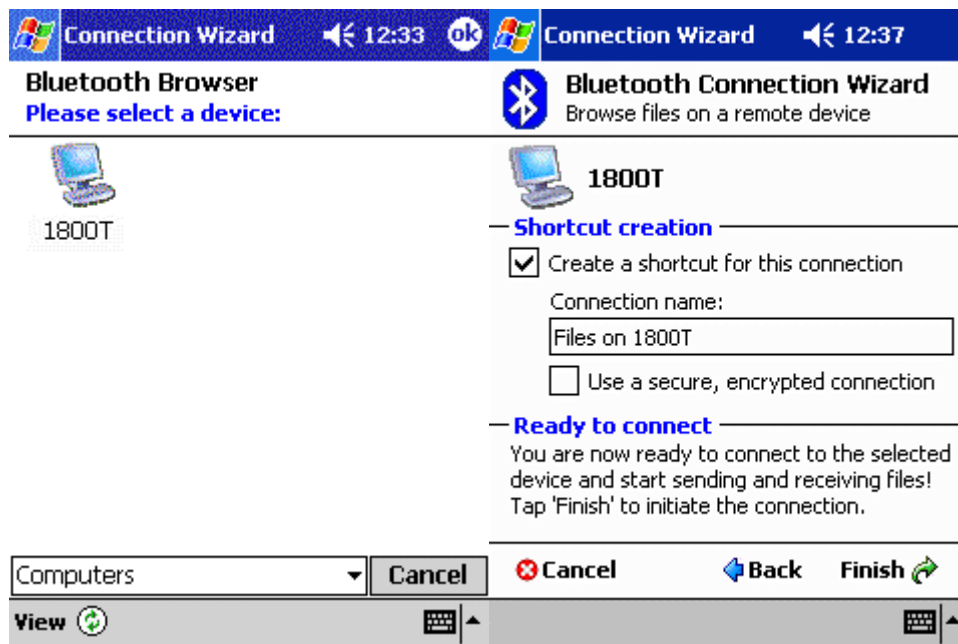
Cancel

Next

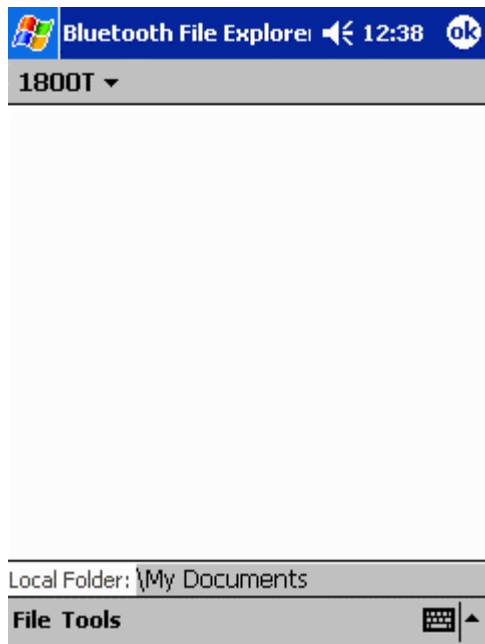
2. Follow the instructions on the screen to the next step.



3. Then select a device, that you went to transfer the file(s) to.



4. Follow the instructions to complete the connection setting, and now you can transfer files between the two devices.



Change the Remote Device Folder

To move down in the directory structure of the remote device, tap the new folder in the main portion of the Bluetooth File Explorer window.

To move up in the directory structure of the remote device, tap the down-arrow to the right of the currently selected folder and select the new folder from the drop-down list.

File Menu

All of the following instructions in the subsections assume that there is an open File Transfer connection with a remote device.

Send a File to the Remote Device

To send a file to the remote device, from the File menu, tap Send a File to display the Open screen.

The options on the Open screen are:

- * Folder-tap the down-arrow and select the folder that contains the file to be sent.
- * Type-the only option is "All Files (*. *)"
- * A list of files in the selected folder; tap the file to be sent
- * Cancel button-aborts the Send a File operation.

The selected file is sent automatically when it is tapped, without further intervention, and the Bluetooth File Explorer main screen reappears.

Create a Folder on the Remote Device

To create a folder on the remote device, navigate to the folder in which the new folder will be placed, and then, from the File menu, tap Create a Folder. Enter a name for the new folder while the default name (New Folder) is highlighted.

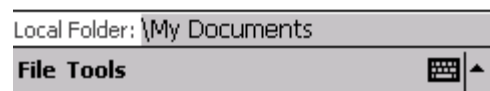
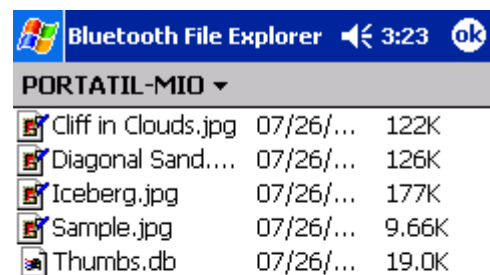
Get a File From the Remote Device

To get a file from the remote device:

1. Navigate to the folder on the remote device that contains the file
2. Tap the desired file to highlight it
3. From the File menu, tap Get.

The file is copied to the local folder listed in the Local Folder field near the top of the screen.

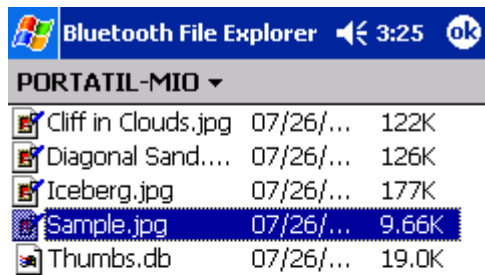
This operation can also be performed using the tap-and-hold technique: tap-and-hold the desired file and select Get from the pop-up menu.



Delete a File on the Remote Device

To delete a file on the remote device: tap the file to be deleted to highlight it, then, from the File menu, tap delete. Tap OK in the confirmation dialog box.

This operation can also be performed using the tap-and-hold technique: tap-and-hold the desired file and select Delete from the pop-up menu. Tap OK in the confirmation dialog box.



Dial-up networking setting for WinCE

Dial-up Networking allows you to connect to a remote computer that is connected to a phone line. Once connected, you can browse the Internet, check your email, etc.

The remote Bluetooth device that will provide the Dial-up Networking service must have access to a telephone system (either a physical or cellular connection).

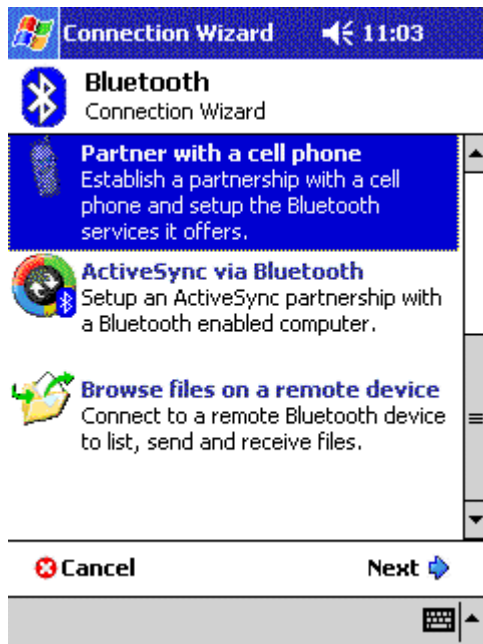
Devices that might provide the Dial-up Networking service include:

- * Bluetooth-enabled cellular telephones
- * Bluetooth-enabled desktop computers that are attached to a telephone system
- * Bluetooth modems.

The remote computer to which you are connecting must also be attached to the phone system and capable of answering a call.

1. To begin dial-up networking setup for using a cell phone, please tap **"Partner with a cell phone"** from Bluetooth connection wizard, and click **"Next"**.

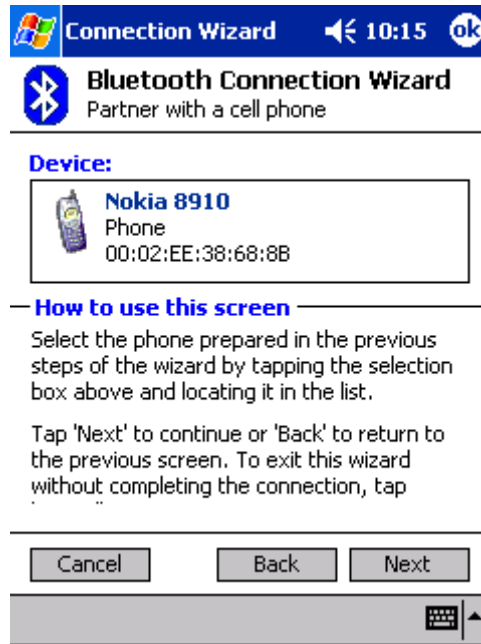
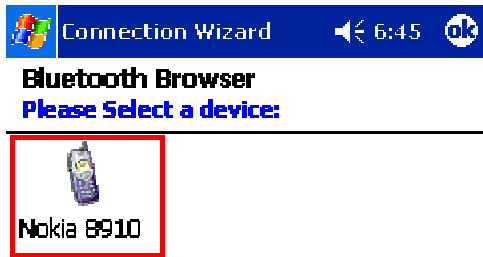
NOTE: For some mobile phones, e.g. Ericsson, we recommend you use the "Explore a Bluetooth device" option rather than the "Partner with a cell phone" option when pairing.



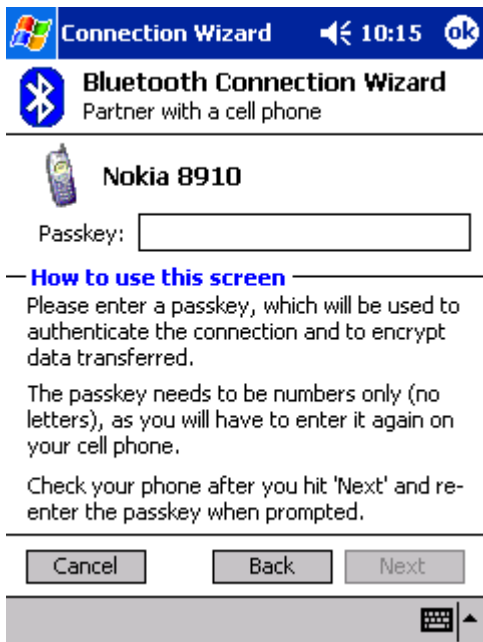
2. And prepare your cell phone in Bluetooth function enable mode, **(To enable your cell phone's Bluetooth function, please refer to the user's guide of your cell phone)** and tap "Next" to continue.



3. After searching, the Bluetooth manager will display the cell phones in range. Double-tap the cell phone icon that you wish to connect to and continue to the next step to pair with this cell phone.



4. Please key in a passkey when prompted, and key in the same passkey on the cell phone to complete the pairing process.

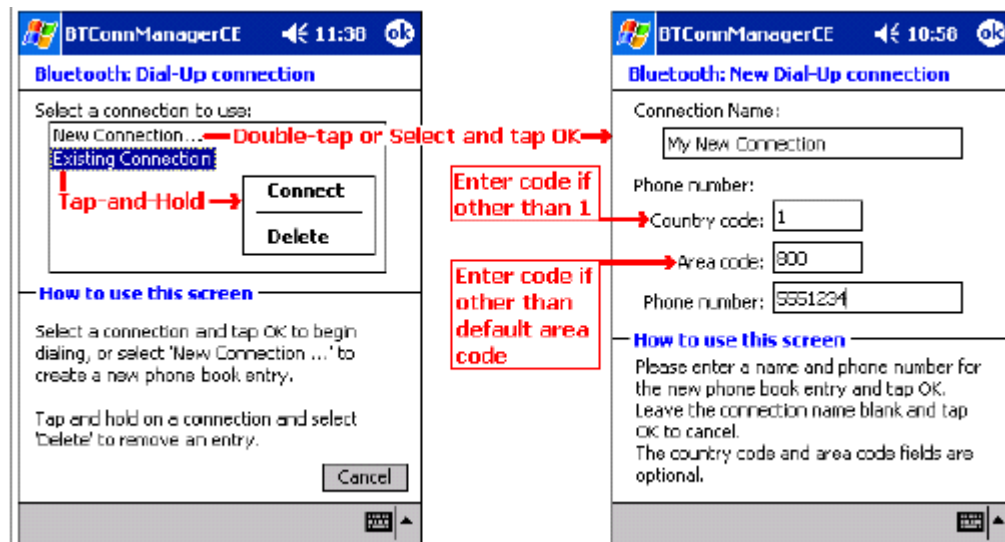


5. Tap "Finish" to complete this step.



Create a Bluetooth Dial-up connection

1. Create a connection to the device that will provide telephone access.
2. From the Bluetooth Manager, My Connections tab, tap-and-hold the Dial-up Networking connection shortcut, and then select Connect from the pop-up menu.
3. On the first Bluetooth: New Dial-up Connection screen, double-tap New Connection.



4. On the second Bluetooth: New Dial-up Connection screen:
 - a) Enter a name for the connection
 - b) If dialing outside of the default country setting, enter the country code
 - c) If dialing outside of the default area code setting, enter the area code
 - d) Enter the phone number to be dialed.

5. Tap OK

Please follow the Dial-Up connection procedures above to complete the Dial-Up settings.

Refer to the PocketPC documentation for assistance.

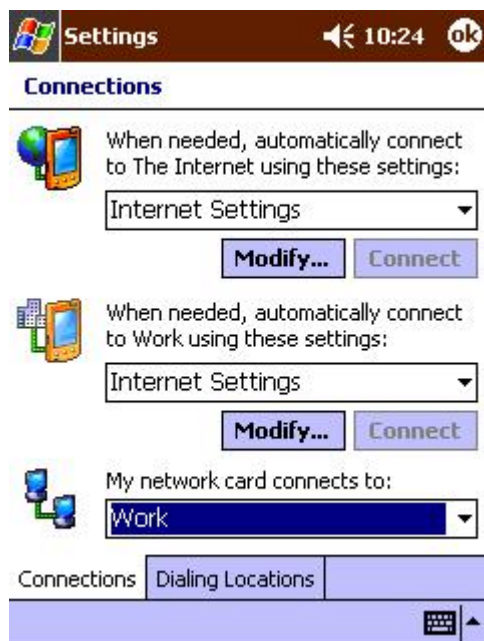
After the connection is active, open a web browser on the PocketPC.

Alternatively, you could set up the connection the traditional way, if the above method did not work for you.

1. Click on "Start" button on the top of the menu bar.
2. Select "Settings", click on the "Connections" tab.



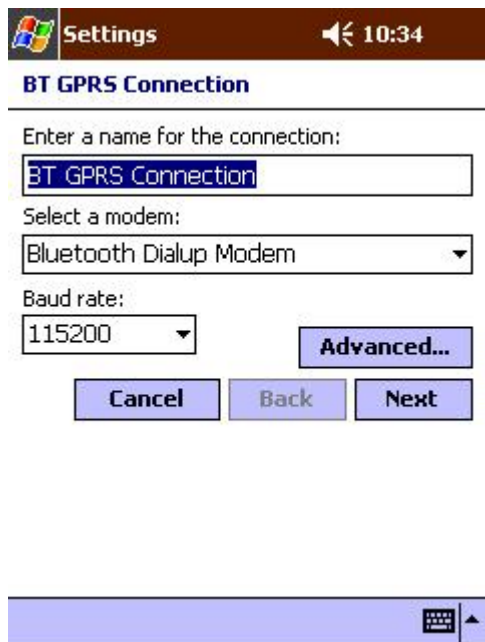
3. Click on the "Connections" icon. On the top "Internet Settings", click "Modify".



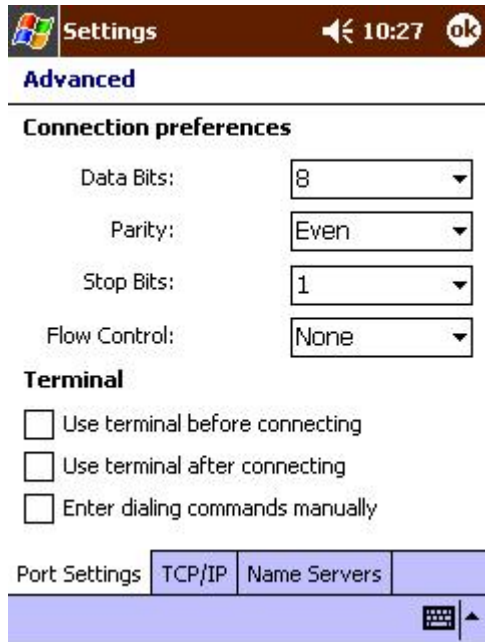
4. Click "New..." to start a new connection.



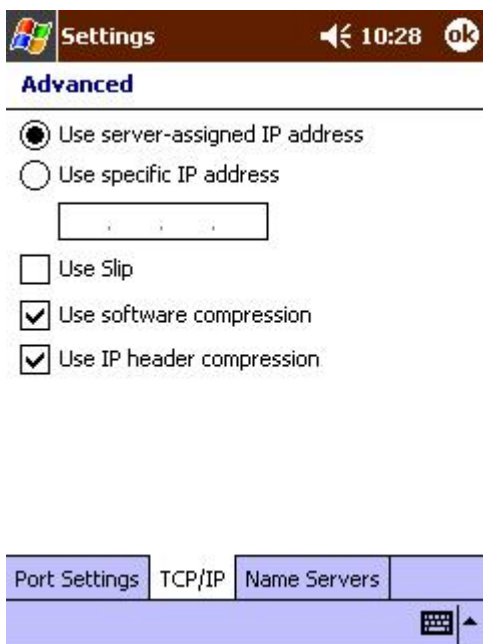
5. Give the new connection a name, select "Bluetooth Dialup Modem", and set the baud rate at "115200".



6. Click "Advanced...", change the "Parity" to "Even", "Stop Bits" to "1", and "Flow Control" to "None".



7. Click on the "TCP/IP" tab, and make sure both "Use software compression" and "Use IP header compression" checkboxes are selected.



8. Click on the "Name Servers" tab. **Some GPRS service may require you to enter the DNS addresses, please check with your GPRS ISP before making the changes.** Otherwise, leave the radio button selected at "Use server-assigned addresses" and click "OK".



Advanced

Use server-assigned addresses

Use specific server address

DNS:

Alt DNS:

WINS:

Alt WINS:



9. Click "Next", enter the phone number for your GPRS connection. Then click "Next".



BT GPRS Connection

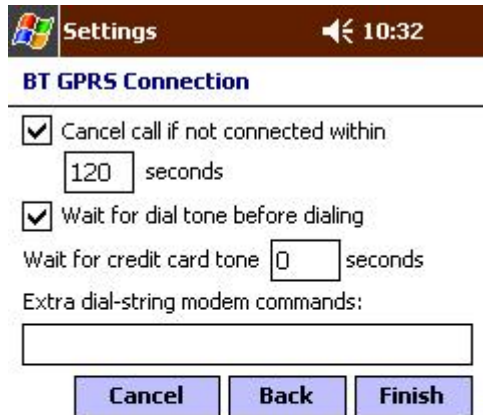
Country code:

Area code:

Phone number:



10. Leave the settings as it is in this page, and click "Finish".

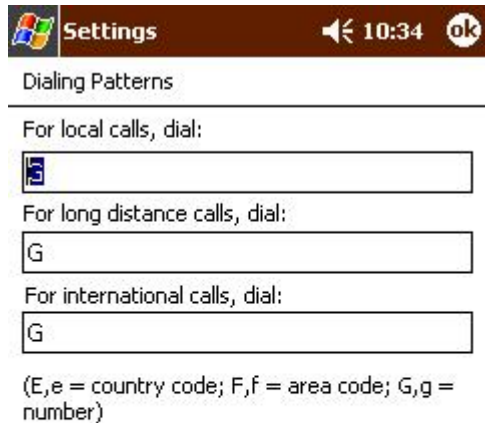


11. Click "OK", and in the Connections page, click on the "Dialing Locations" tab.

- a) Change the "Location:" to "Home".
- b) Delete the entries in "Area code:" and "Country code:".
- c) Select the "Disable call waiting;" checkbox.
- d) Enter the phone number of your GPRS service again. Then click on "Dialing Patterns..."



12. Change all entries to "G", assuming you are making a local GPRS phone call. Then click "OK".



13. Now you have set up a GPRS Bluetooth Connection. Click the "Connect" button and click "OK" without entering any user name or password, within a few seconds you should be connected to the Internet.

14. Open "Internet Explorer" and start surfing the net.

Serial port setting for WinCE

The use of a Bluetooth wireless serial port connection is identical to the use of a physical cable serial port connection between two devices.

As with a physical connection, the application that will use the connection must be configured to use the correct serial port.

To determine the COM port assigned to the Bluetooth serial port:

1. From the Today Screen, tap the Bluetooth icon to open the Bluetooth Control Panel.
2. Use the scroll arrows at the bottom-right of the screen to expose the Serial Port tab, and then select the Serial Port tab. The Outbound COM Port is listed in the lower portion of the screen. Configure the application that will use the Bluetooth Serial Port to send data to this port.

ActiveSync setting for WinCE

1. To establish the ActiveSync connection on a PDA, please tap "**ActiveSync via Bluetooth**" from the Bluetooth connection wizard, and click "**Next**".



2. Make sure your computer is capable of accessing your PDA, and determine which "COM" port number (For example "COM6") is used for incoming Bluetooth connections (refer to [ActiveSync setting for Windows](#) section). You will need this information later. Tap "Next" to next step.



3. Make sure your PC side's ActiveSync "Connection Settings" is using the right COM port, click "Next".

Connection Wizard 12:19

Bluetooth Connection Wizard
ActiveSync via Bluetooth



Prepare the computer

Step 2 - ActiveSync setup

Open ActiveSync on the computer and select "Connection Settings..." from the "File" menu.

Note: If the "Get Connected" wizard appears, connect your handheld to the computer via the cradle or a cable once and try again.

In the Connection Settings screen, enable "Allow serial cable or infrared connection to this COM port" and select the COM port assigned in Step 1.


Cancel Back Next

4. Tap screen and choose a device on the list.

Connection Wizard 12:20

Bluetooth Connection Wizard
ActiveSync via Bluetooth

Device:

 <No device selected>
Tap here to choose a device

How to use this screen

Select the computer prepared in the previous steps of the wizard by tapping the selection box above and locating it in the list.

Tap 'Next' to continue or 'Back' to return to the previous screen. To exit this wizard without completing the connection, tap 'Cancel'.

Cancel Back Next

5. Select a device you want to use.

Bluetooth Browser
Please select a device:



Computers Cancel

View View

6. Follow the instructions to create a shortcut for the Bluetooth ActiveSync connection.

Bluetooth Connection Wizard
ActiveSync via Bluetooth



1800T

Shortcut creation

Create a shortcut for this connection

Connection name:

ActiveSync with 1800T

Use a secure, encrypted connection

Ready to connect

You are now ready to start ActiveSync using the device above! Tap 'Finish' to initiate the connection.

Cancel Back Finish

Bluetooth
Authentication

Device: 1800T

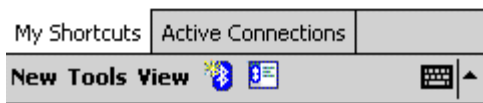
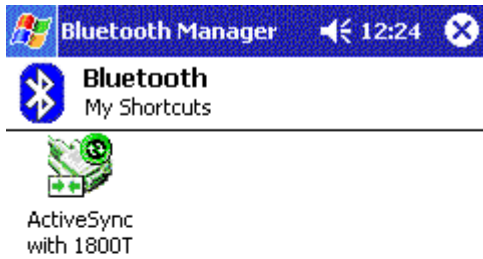
Passkey:

Cancel

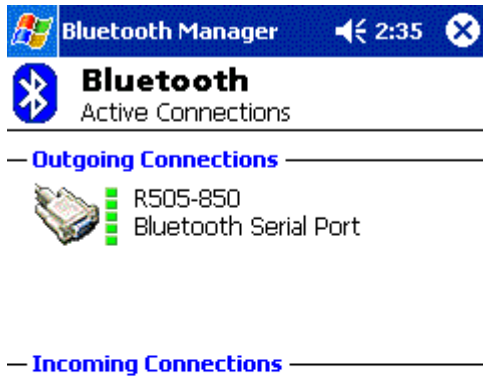
How to use this screen

The Bluetooth pairing procedure establishes a secret key that is used in all future connections to authenticate device identity and encrypt data.

Enter your passkey in the field above and tap OK to establish a paired relationship with this device.



7. After the shortcut is created, you can see your device is connected with your computer. You can tap "**Active Connections**" to check the signal strength.



Hosting a Personal Area Network

To host a personal network, go to the Bluetooth Manager, choose **New > Connect > Join a personal network > Next**. The following screen will be shown:



Choose **Host a personal network** and tap Next. You will then be shown the following screen, which allows you to "bring in" one or more guests, if desired. This step is optional, since guests can join later on as long as the personal network is active (more details in the following section).



Adding devices to a personal network.

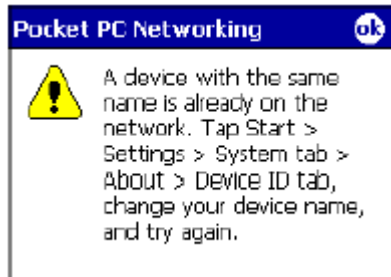
Joining a Personal Area Network

BTW-CE makes it easy to join an existing personal network, hosted by another Bluetooth device (PocketPC, desktop, etc.) From the Bluetooth Manager, choose **New > Connect > Join a personal network > Next**, but choose **Join a personal network** this time. The Bluetooth Browser will be shown for you to select the device that is hosting the personal network. After selecting the host,

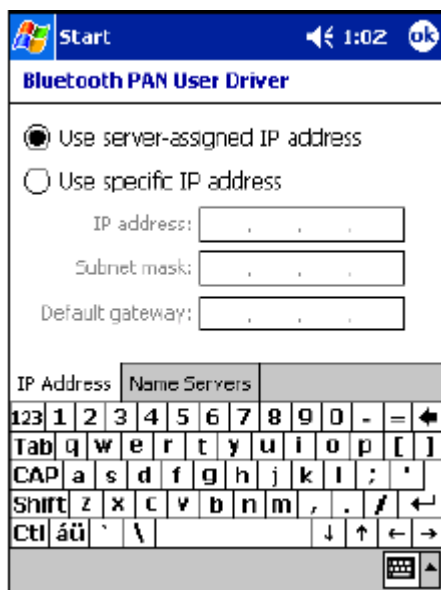
choose **Next**. A connection will then be established between your PocketPC and the host over the personal network.

At this moment, you might be prompted to enter IP network settings ; if this is the case, choose "**Use server-assigned IP address**" and tap **OK**.

The following warning may also be shown to you. As instructed, change the name of your device and tap OK.

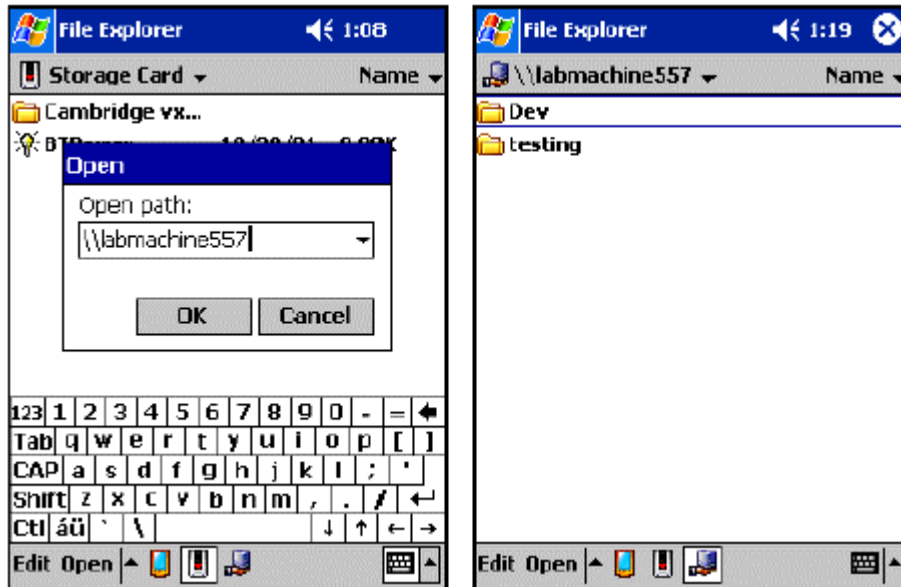


Since the network is established via Bluetooth, the network host's service availability, authorization and/or authentication security settings are in effect and may prevent you from joining the network.



PAN network settings.

After joining the personal network, you can use any application that requires an underlying network connection. For instance, you can view a remote folder via the File Explorer by choosing **Open** and entering a remote, accessible device path.



Browsing files on a remote device (via the PocketPC File Explorer) after joining a personal network.

Install Bluetooth on MAC O.S.

The system requirement for using this USB Bluetooth adapter on MAC O.S.:

- Mac O.S. X 10.1.4 or greater
- One free USB port
- If you are using Mac O.S. X prior to v.10.2, you will need to download Bluetooth upgrade pack, "Technology Preview 2.1" from Apple's website. "Technology Preview 2.1" can be found by visiting <http://www.apple.com/bluetooth/>, type Technology Preview 2.1 in the search block.

Setup instructions can be found inside the upgrade pack to enable Bluetooth services.

For Mac O.S. X 10.4

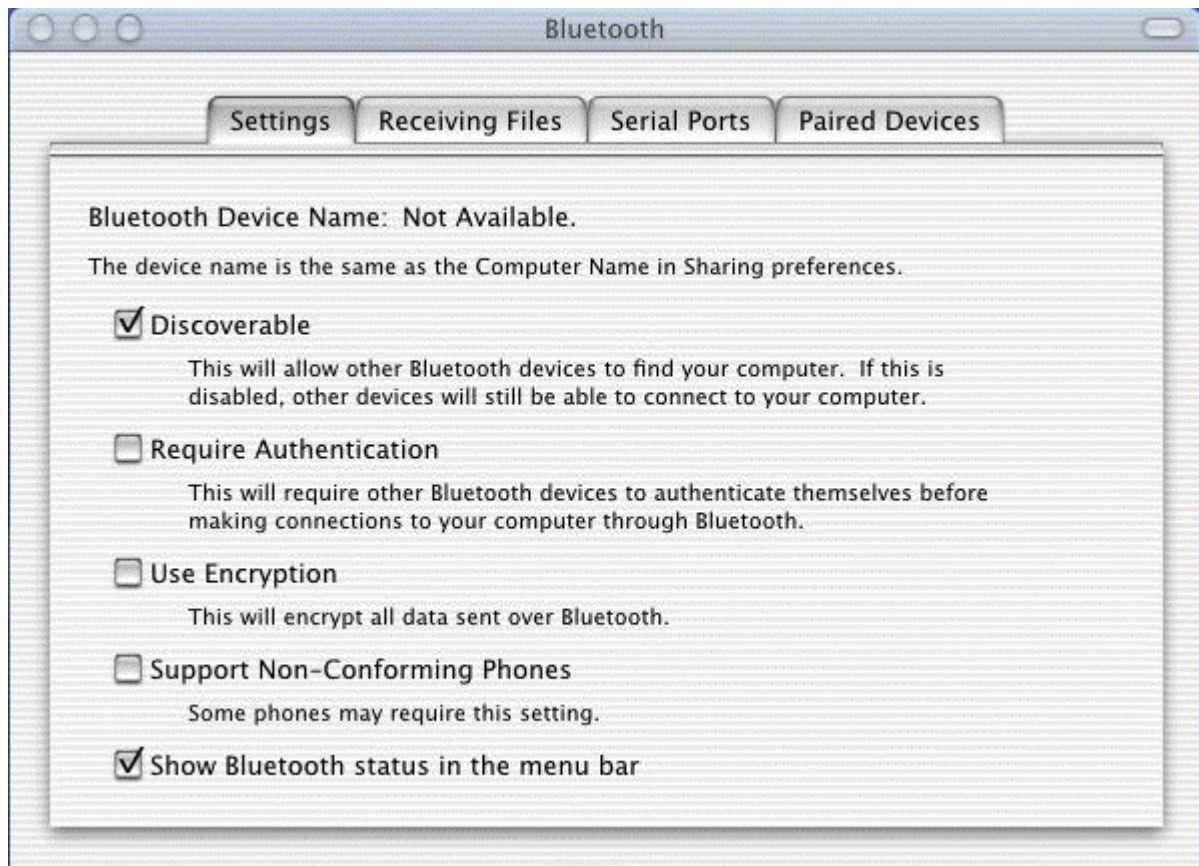
(A) Setting Up Your Computer for Bluetooth

- (1) You need to set up your computer to use Apple Bluetooth Preview Release 2.1
- (2) Insert the Bluetooth USB Adapter into an open USB port on your computer.
- (3) Double-click "Apple Bluetooth.pkg." Install the Apple Bluetooth Preview Release 2 software, then restart your computer.

(4) Open the Bluetooth pane of System Preferences and click the Settings tab.

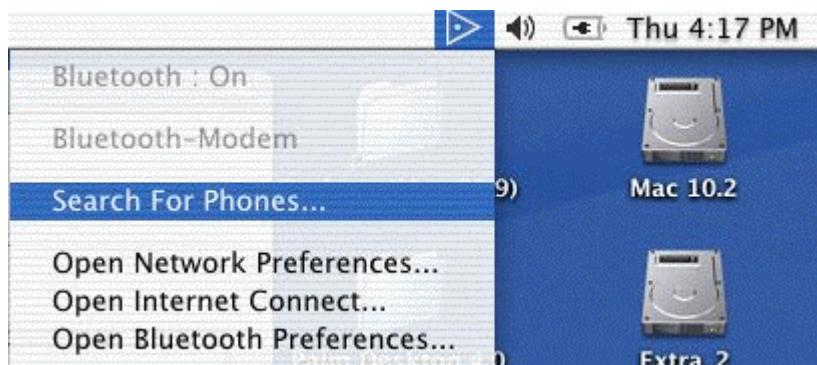


(5) Select "Discoverable" and "Show Bluetooth status in the menu bar".

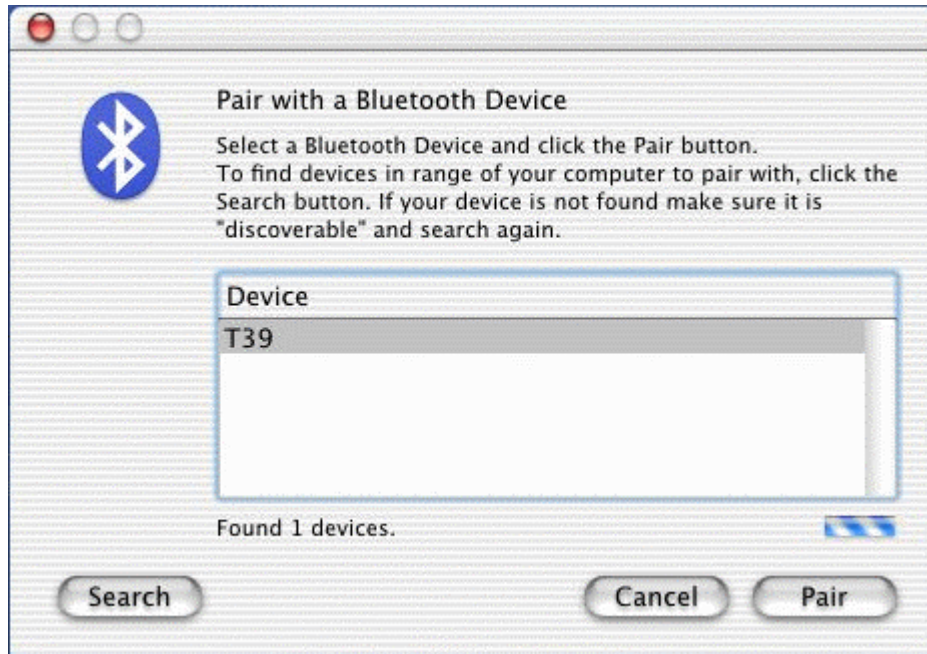


(B) Pairing Your Macintosh With a Bluetooth-Enabled Phone

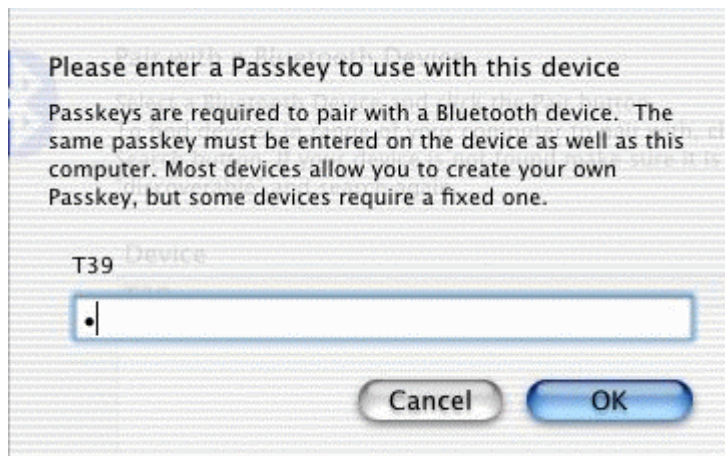
- (1) Before you can connect to the Internet, you need to pair your computer with your Bluetooth-enabled phone.
- (2) Make sure your Bluetooth-enabled phone is on and in “discoverable” mode. See the documentation that came with your phone.
- (3) Choose Search For Phones from the Bluetooth status menu in the menu bar.



- (4) Select your phone in the "Pair with a Bluetooth Device" dialog box, then click Pair.



(5) Enter a passkey. Use any combination of numbers. When prompted, enter the same passkey on your phone.



(6) Your computer is now paired with your phone. The name of your phone is listed in the Bluetooth status menu in the menu bar. Apple Bluetooth software remembers the pairing with your phone, so you should only need to pair with your phone once.

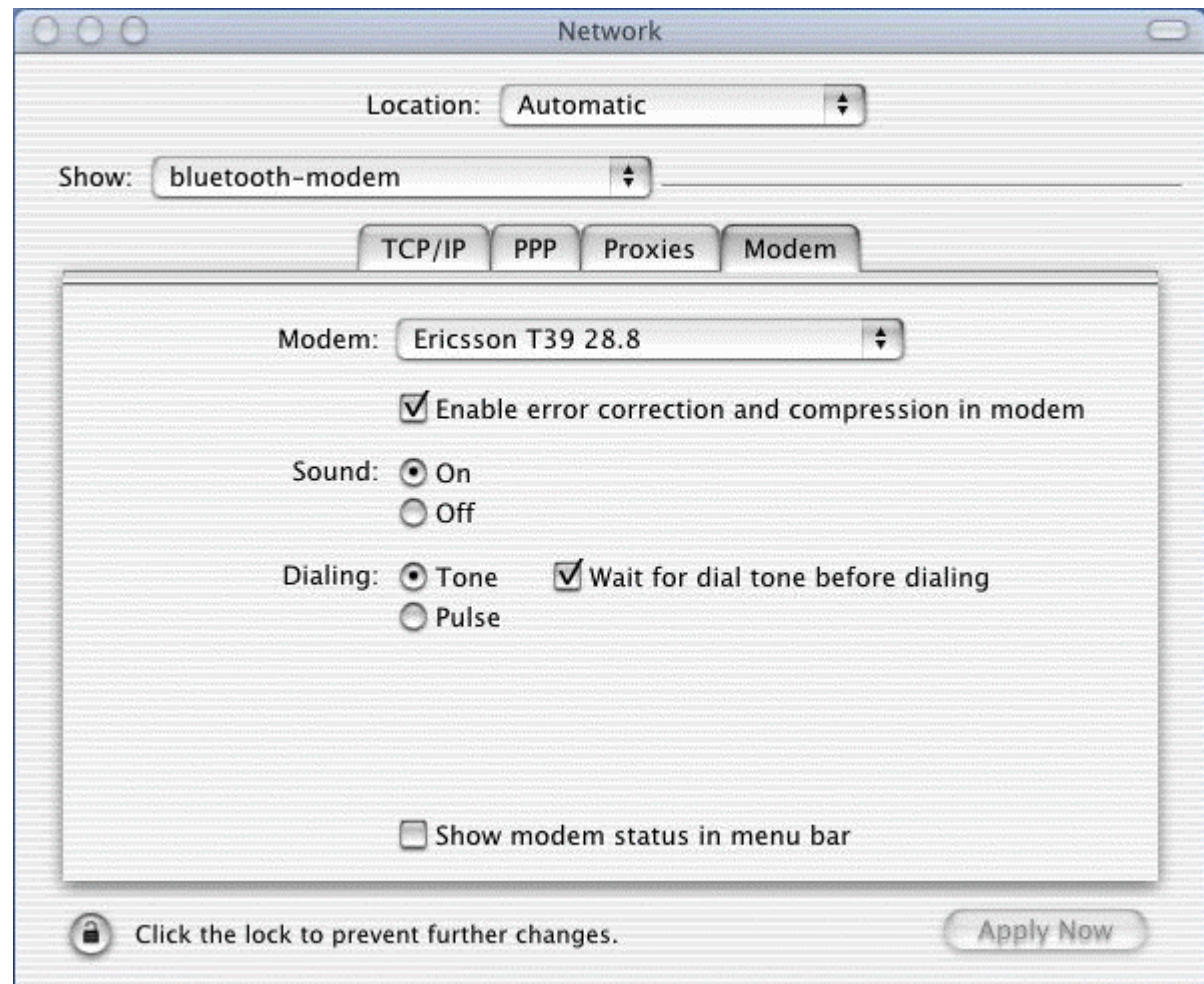
(7) You can now use your phone to dial your Internet service provider (ISP) and connect to the Internet. Follow these instructions to set up your computer and connect to the Internet.

Note: To access the Internet, you must have an active mobile phone account capable of digital services and an account with an ISP (fees may apply).

(C) Connecting to the Internet With a Bluetooth-Enabled Phone

To set up your computer to connect to the Internet with a Bluetooth-enabled phone:

- (1) Choose your phone from the Bluetooth status menu in the menu bar.
- (2) Open the Network pane of System Preferences. Choose "bluetooth modem" from the Show pop-up menu.

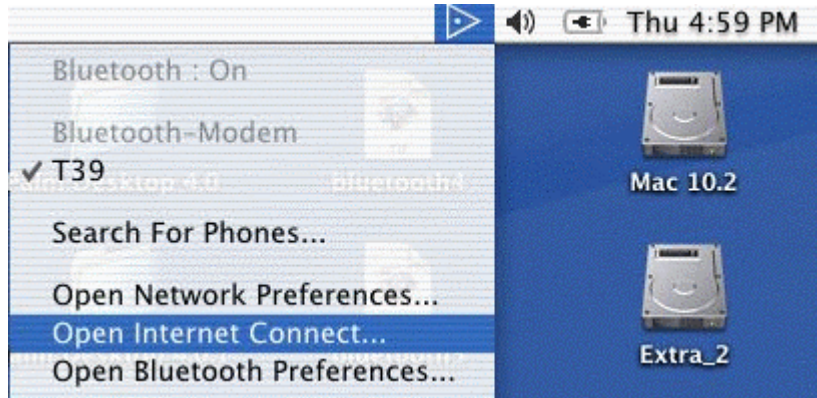


Note: Make sure the "bluetooth modem" port is turned on in the Network pane of System Preferences. To do this, choose Active Network Ports from the Show pop-up menu, then select "bluetooth modem".

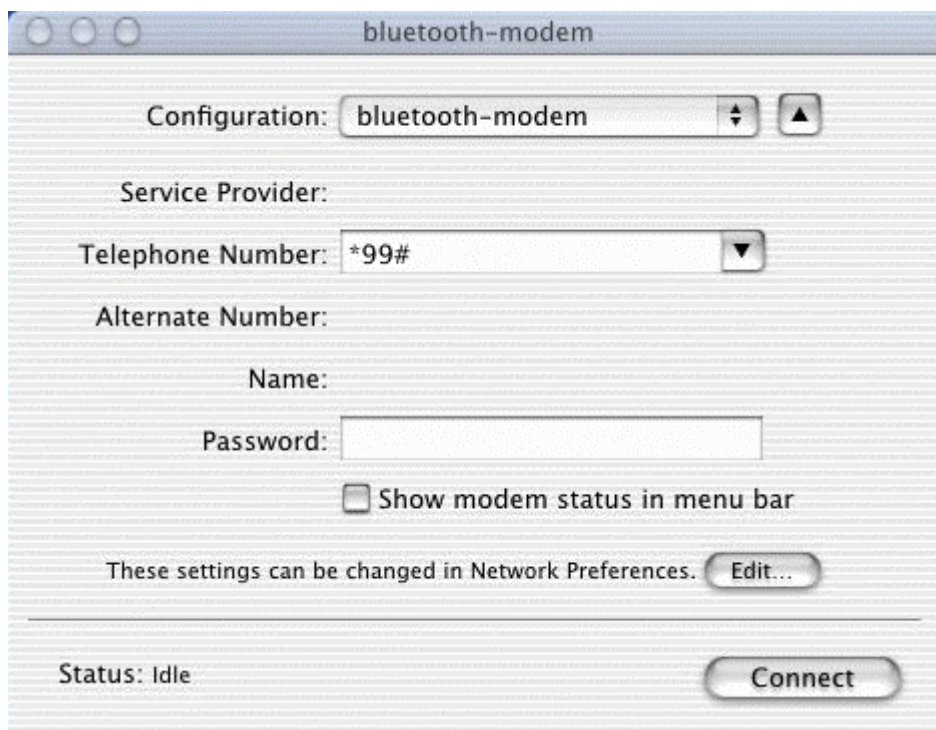
- (3) Enter your ISP information in the TCP/IP and PPP tabs.
- (4) Choose the model of your phone from the Modem pop-up menu in the Modem tab.

(D) To connect to the Internet:

- (1) Choose Open Internet Connect from the Bluetooth status menu in the menu bar.



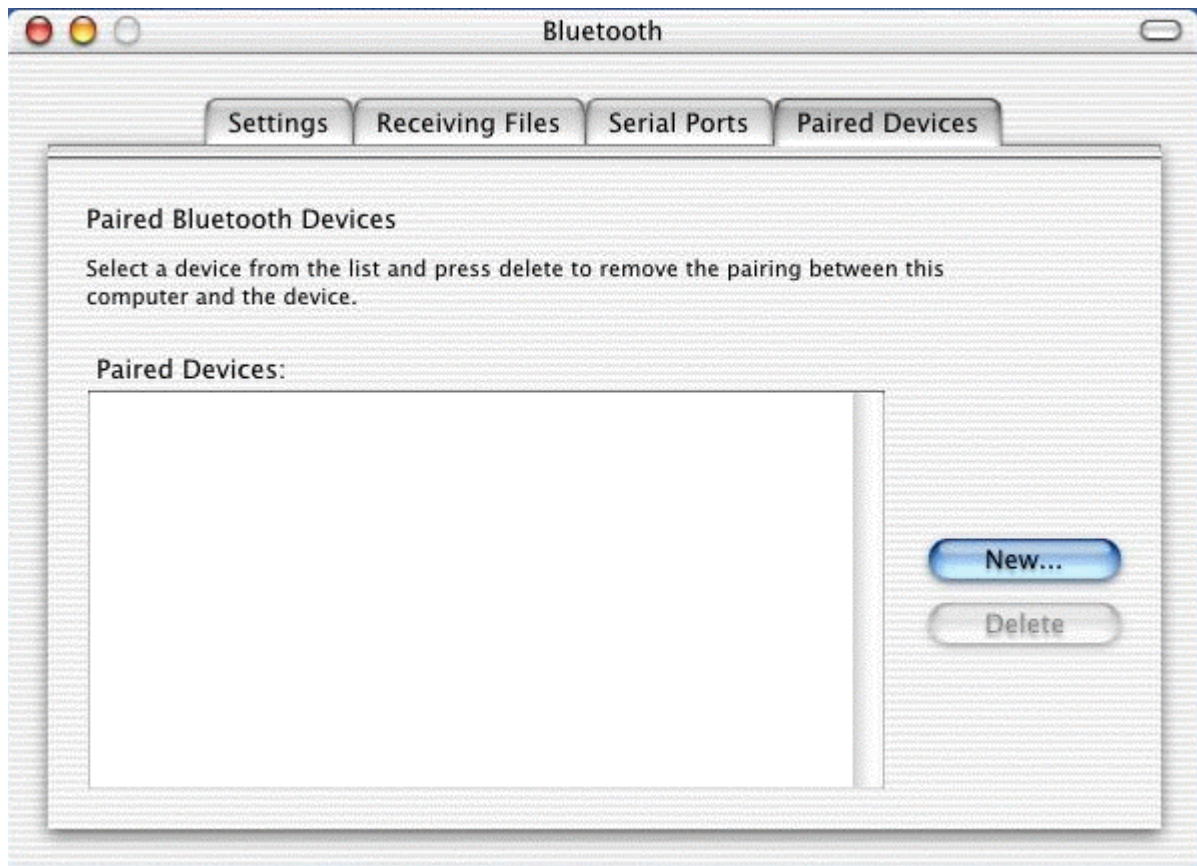
(2) Choose "bluetooth modem" from the Configuration pop-up menu then click Connect.



(E) Pairing Your Macintosh With Bluetooth-Enabled Devices

Apple Bluetooth Preview Release 2 also lets you pair with other Bluetooth-enabled devices like Palm Powered handheld devices and other Bluetooth-enabled computers. Once you have paired with the device, Bluetooth remembers its name and the type of services it provides. Make sure the devices you want to pair with are in discoverable mode. See the documentation that came with the device.

(1) Click the Paired Devices tab in the Bluetooth pane of System Preferences.



(2) Click New. Bluetooth searches for Bluetooth-enabled devices in range of your computer.

(3) Select the device you want to pair with and click Pair.

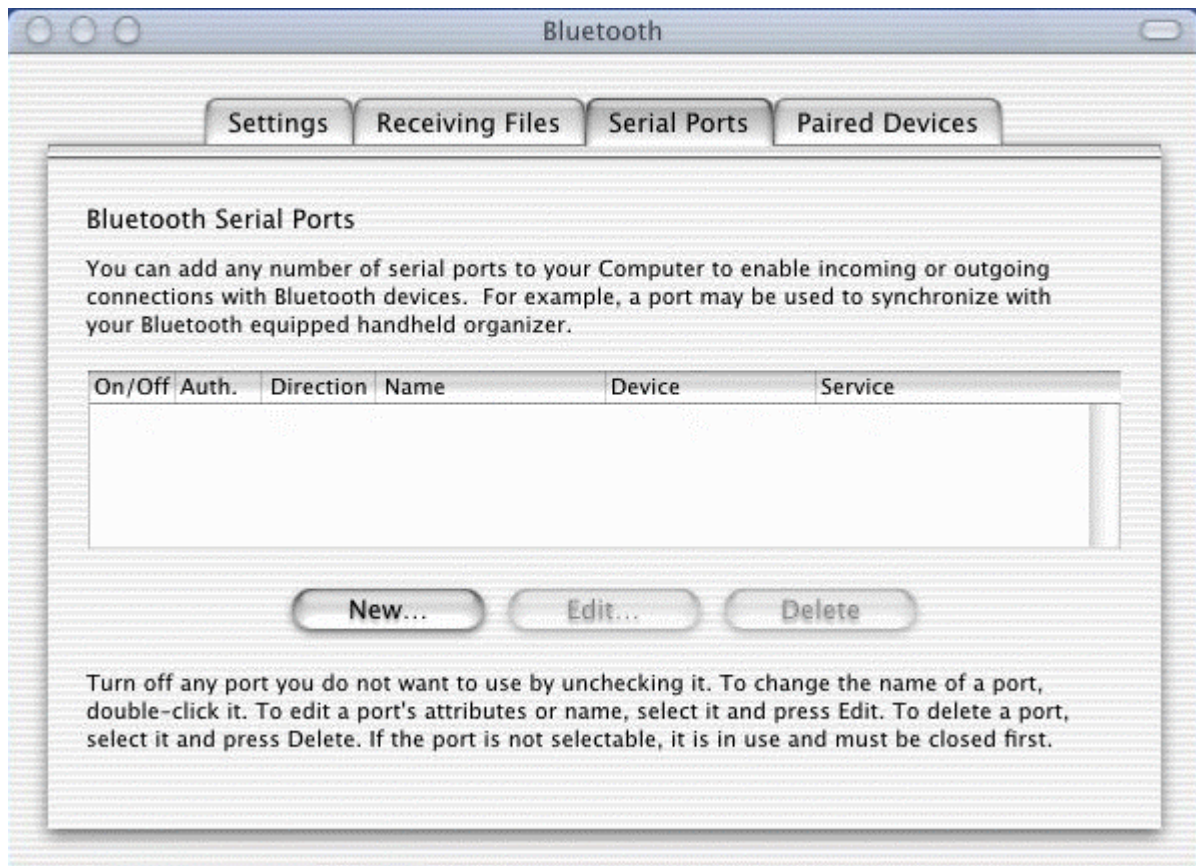
(4) Enter a passkey. Use any combination of numbers. If prompted, enter the same passkey on your Bluetooth-enabled device. Bluetooth remembers the name of the device. To delete the device from the list, select it and click Delete.

(F) Adding Serial Ports

Apple Bluetooth Preview Release 2 allows you to add any number of serial ports to your computer to enable incoming and outgoing connections with Bluetooth devices.

To add serial ports to your computer:

(1) Click New in the Serial Ports tab of the Bluetooth pane of System Preferences.



(2) Name the port and select options for it.





Note: If the port is an outgoing port, click Select Device and then select a device from the Select Bluetooth Device Service list or search for a device by clicking Search.

(g) Exchanging Files Between Bluetooth-Enabled Devices

You can use the Bluetooth File Exchange application to exchange files between Bluetooth enabled devices. The Bluetooth File Exchange application is located in the Bluetooth folder, in the Extras folder inside the Applications folder on your hard disk.

Make sure the devices you want to exchange files with are discoverable.

- (1) Drag the file you want to exchange onto the Bluetooth File Exchange icon. It is located in the Bluetooth folder, in the Extras folder inside the Applications folder on your hard disk.
- (2) Click Search in the Send Files dialog box to find the Bluetooth-enabled devices in range.
- (3) Select the name of the device you want to send files to from the list, then click Send.

Note: If no devices are found, make sure they are in discoverable mode. To make your computer discoverable, select Discoverable in the Settings tab of the Bluetooth pane of System Preferences.

- (4) If you are asked for a passkey, enter one and click Respond. If the device receiving the

files is prompted for a passkey, enter the same passkey on the receiving device and click Respond.

(5) If the receiving device is prompted that it is preparing to receive a file, click Accept to receive the files. Depending on the options selected, it may ask to open the file. Click Open to open the file.

(H) Synchronizing a Bluetooth-Enabled Palm Powered Device

With a Computer Using Palm HotSync Manager

If you have a Bluetooth-enabled, Palm Powered device, you can synchronize data between the device and a Bluetooth-enabled Macintosh using Palm HotSync[®] Manager.

Make sure you have Palm Desktop 4.0 installed on your computer. For the latest version of the Palm Desktop software, go to www.palm.com/macintosh

(AA) Setting Up Your Computer to Synchronize With the Palm Powered Device

(1) Open HotSync Manager, located in the Palm folder in the Applications folder on your hard disk.

(2) Select “bluetooth-pda-sync-port” in the Connection Settings tab.

Note: Make sure Enabled is selected in the HotSync Controls tab.

(AB) Setting Up Your Palm Powered Device to Synchronize With Your Computer

The following setup procedure only needs to be done once. Depending on the device, the names and locations of some menus may be different. For precise instructions, see the documentation that came with your device.

(1) Open HotSync on your Palm Powered device.

(2) Choose Connection Setup from the Options menu.

(3) Click New to create a new connection and name the connection.

(4) Choose PC from the “Connect to” pop-up menu and choose Bluetooth from the Via pop-up menu.

(5) Tap to find Bluetooth-enabled devices and choose your device from the list. Click OK.

(6) Click OK, and then click Done.

(AC) Synchronizing Your Handheld Device With Your Computer

(1) Choose the Bluetooth connection from the Connections pop-up menu.

(2) Click the HotSync icon.

How to pair with my mobile phone?

How to pair with Nokia 6310

(1). To activate Bluetooth on your Nokia 6310, press "**Menu**", select "**Bluetooth**" and "**On**".

(2). From your notebook or PDA, begin a Bluetooth device search. A mobile phone icon will show up in the right pane of the Bluetooth software window with the name of your Nokia 6310.

(3). Double click the mobile phone icon to discover the services it provides. You should see COM, Dial-up networking, Fax, or more, depending on the model of your Nokia mobile phone.

(4). From your Nokia 6310, select "**Search for Bluetooth accessories**", the phone starts searching for devices and accessories.

(5). Scroll to the device you want and press "**Select**".

(6). If devices have not been paired, the user is asked to enter the passcode of the desired device. (The Nokia Bluetooth Passcode is a 1 to 16 character-long numeric code of your choice)

(7). A Passkey dialog box will pop up on your notebook or PDA, type in the same passkey you've entered on your mobile to complete pairing.

(8). If pairing was successful, a "**Paired with ******" message box will pop up on your mobile phone. You should also see a tick on the side of the mobile phone icon in your notebook or PDA.

(9). You are now able to use the services of your mobile phone.

How to pair with Nokia 8910

(1). To activate Bluetooth on your Nokia 8910, press "**Menu**", select "**Bluetooth**" and "**On**".

(2). From your notebook or PDA, begin a Bluetooth device search for your Nokia 8910.

(3). A mobile phone icon will show up in the right pane of the Bluetooth software window with the name of your Nokia 8910.

- (4). Double click the mobile phone icon to discover the services it provides. You should see COM, Dial-up networking, Fax, or more, depending on the model of your Nokia mobile phone.
- (5). From your notebook or PDA, double click on the service you wish to use and it will trigger a dialog box "**Connect with ***?**" on your mobile phone. (where *** is the name of your notebook or PDA)
- (6). Push the "**Accept**" button, and enter a passcode, e.g. 55 and push the OK button. (The Nokia Bluetooth Passcode is a 1 to 16 character-long numeric code of your choice)
- (7). A Passkey dialog box will pop up on your notebook or PDA, type in the same passkey you've entered on your mobile.
- (8). If pairing was successful, a "**Paired with ******" message box will pop up on your mobile phone. You should also see a tick on the side of the mobile phone icon in your notebook or PDA.
- (9). You are now able to use the services of your mobile phone.
For further Bluetooth functions on your Nokia mobile phone, please refer to Nokia's User's Guide

How to pair with Ericsson T39m

- (1). On your mobile phone, push the "**Menu**" button, scroll to "**Extras**", "**Yes**", "**Bluetooth**", "**Yes**", "**Discoverable**", "**Yes**" to make your Ericsson mobile phone detectable by other Bluetooth devices.
- (2). "**Discoverable for 3 minutes**" message box will pop up.
- (3). From your notebook or PDA, begin a Bluetooth device search for your Ericsson T39.
- (4). A mobile phone icon will show up in the right pane of the Bluetooth software window with the name of your Ericsson T39.
- (5). Double click the mobile phone to discover the services it provides. You should see Serial Port, Dial-up Networking, Fax, and more, depending on the model of your mobile phone.
- (6). From your mobile phone, scroll to "**Extras**", "**Yes**", "**Bluetooth**", "**Yes**", "**Discover**", "**Yes**". A list of discovered devices appears.
- (7). You can now choose the Bluetooth device you wish to connect to, then select "**Add to paired**", the mobile phone will prompt you for a "**Passkey**". Type in a passkey, e.g. 55 and push "**Yes**".
- (8). A Passkey dialog box will pop up on your notebook or PDA, type in the same passkey you've entered on your mobile. A "**Pairing Succeeded**" message box will pop up.
- (9). On your mobile phone, enter a name for your notebook or PDA, or push