



**MOTOROLA**

**User's Guide  
For LS1000W**

**10" Digital Photo Frame  
with Slideshow**

***Warning***

*Use only the power adapter supplied with your product.*

## **Welcome...**

### **to your new Motorola Digital Photo Frame!**

Please retain your original dated sales receipt for your records. For warranty service of your Motorola product, you will need to provide a copy of your dated sales receipt to confirm warranty status. Registration is not required for warranty coverage.

For product-related questions, please call:

**1-888-331-3383 in US and Canada**

**0845 218 0890 in UK**

**(65) 68412668 in Singapore**

**On the Web: [www.motorola.com](http://www.motorola.com)**

---

***This User's Guide provides you with all the information you need to get the most from your digital photo frame.***

***Before you start using, you will need to set up your digital photo frame. Follow the simple instructions in "Getting started", on the next few pages.***

#### **IMPORTANT**

- Only use the supplied power adapter.

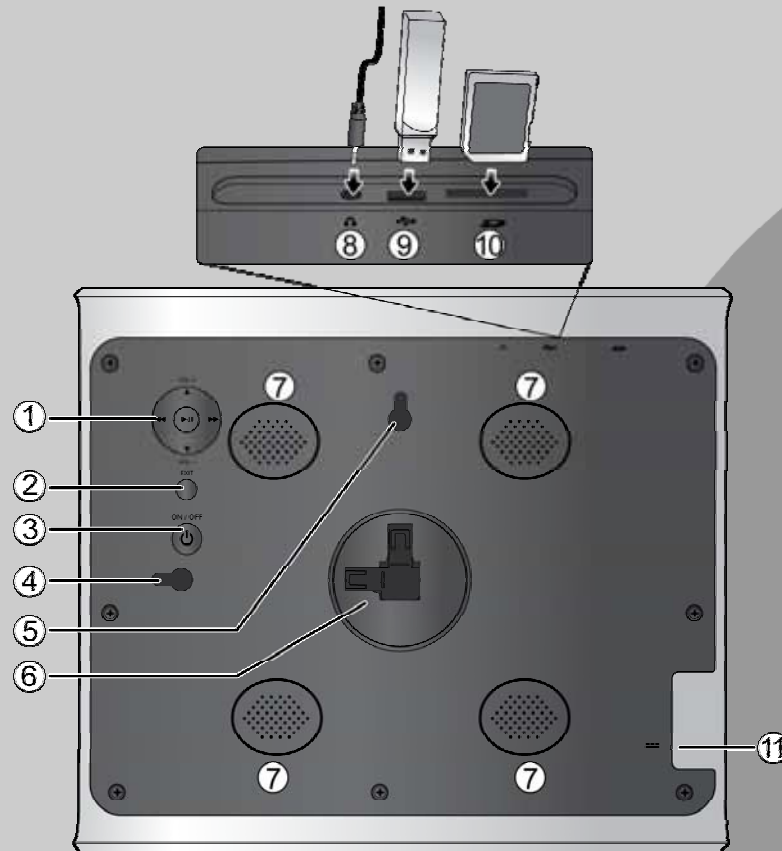
#### **Got everything?**

- 1 x Digital Photo Frame
- 1 x Stand
- 1 x Power adapter
- 1 x Remote control
- 1 x Quick Start Guide
- 1 x User's Guide

#### **Key features**

- 3 view modes: Clock/Calendar mode, slideshow mode and thumbnail mode
- 5 slideshow transition effects
- Date and Time settings
- Programmable On/Off Time
- Supports flash drive, SD, SDHC and MMC memory cards.

## Frame Overview



1. Navigation and ENTER buttons
2. EXIT button
3. ON/OFF button
4. Hanging slot (Portrait position)
5. Hanging slot (Landscape position)
6. Stand locking slot
7. Loudspeaker
8. Earphone jack  
for connecting to an earphone/headset or external speaker to play the audio.
9. USB port  
for inserting a USB flash drive that contains the photos or music you want to play.
10. Memory card slot  
for inserting an SD/SDHC, MMC, MS, MS PRO or xD memory card that contains the photos or music you want to play.
11. Power jack



## Table of Contents

<b>1. Getting started</b> .....	<b>5</b>		
1.1 Installing the stand .....	6		
1.1.1 Landscape position .....	6		
1.1.2 Portrait position .....	7		
1.2 Connecting to power .....	8		
1.3 Inserting a memory card or a USB flash drive .....	8		
1.4 Replacing the remote control battery.....	9		
<b>2. Using the photo frame</b> .....	<b>10</b>		
2.1 Using the control buttons .....	10		
2.2 Using the remote control .....	13		
<b>3. Using the menus</b> .....	<b>15</b>		
3.1 Using the Main Menu .....	15		
3.2 Using the Photo menu.....	16		
3.2.1 Copying one or all photos .....	17		
3.2.2 Deleting one or all photos .....	17		
3.2.3 Auto rotation .....	18		
3.3 Using the Music menu.....	19		
3.3.1 Copying one or all music files .....	19		
3.3.2 Deleting one or all music files .....	20		
3.4 Using the Calendar menu .....	20		
3.5 Using the Wi-Fi menu.....	21		
3.5.1 Step 1: Setting up Wi-Fi connection .....	21		
3.5.2 Step 2: Configuring your accounts .....	25		
3.5.2.1 Configuring your Picasa account.....	25		
3.5.2.2 Configuring your Flickr account.....	26		
3.5.2.3 Configuring your Frame Channel			
account.....	26		
3.5.2.4 Configuring RSS .....	27		
3.5.2.5 Configuring your email account.....	28		
3.5.3 Step 3: Using web services.....	29		
3.5.3.1 Using Picasa.....	29		
3.5.3.2 Using Flickr.....	29		
3.5.3.3 Using Frame Channel .....	30		
3.5.3.4 Using RSS .....	30		
3.5.3.5 Using WEB Radio .....	31		
3.5.3.6 Using Email.....	33		
3.5.3.6.1 Adding your contacts to the			
Welcome list .....	33		
3.5.3.6.2 Receiving photo emails .....	33		
3.5.3.6.3 Viewing received photo			
emails on inbox.....	34		
3.5.3.6.4 Sending a photo by email.....	35		
3.5.3.6.5 Editing or deleting the contacts			
in the Welcome list.....	36		
3.6 Using the Settings menu .....	37		
3.6.1 Setting an alarm .....	40		
3.6.2 Enabling auto on/off .....	41		
<b>4. General information</b> .....	<b>42</b>		
<b>5. Technical specifications</b> .....	<b>49</b>		
<b>6. Appendix</b> .....	<b>51</b>		

## 1. Getting started

### **WARNING**

- *Do not place your digital photo frame in the bathroom or other humid areas.*
- *Do not place your digital photo frame near sources of heat and extreme temperatures, such as fluorescent lighting, microwave ovens, heating appliances and direct sunlight.*
- *Do not disassemble your digital photo frame; there are no user-serviceable parts inside.*
- *If the LCD screen breaks, do not touch the glass or liquid. Contact Motorola customer support for assistance.*
- *Use only the power adapter supplied with your digital photo frame.*

### **Compatible photo format**

Your digital photo frame can only display photos that are in JPEG format. Other photo formats may not be detected or displayed correctly.

The photos will be displayed in alphabetical order.

### **Care and maintenance**

Wipe the frame and the LCD screen gently with a soft, clean, dry cloth.

To remove fingerprints on the LCD screen, wipe gently with a soft, lint-free cloth. Do not use cleaning solutions unless they are designed specifically for LCD screens.

### **IMPORTANT**

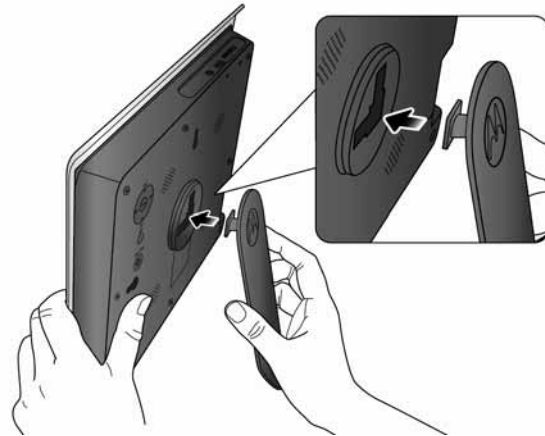
*Always switch off and disconnect the power adapter before cleaning the digital photo frame.*

## 1.1 Installing the stand

### 1.1.1 Landscape position

To place the photo frame in landscape position, follow the steps below to install the stand.

1. Hold the photo frame in landscape position.
2. Attach the stand to the stand locking slot on the back of the photo frame.



3. Insert the stand into the stand locking slot as illustrated, until the stand is secured to the photo frame.



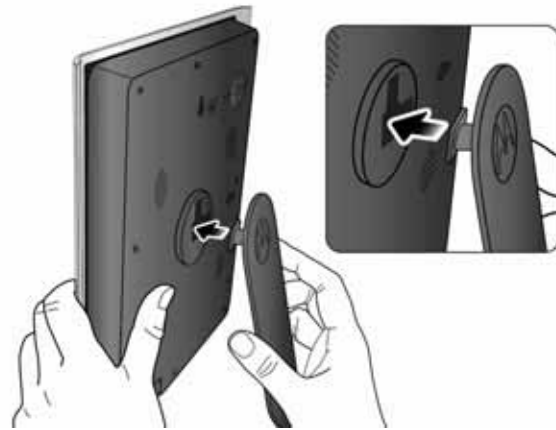
#### **WARNING**

- Do not rotate the stand during the installation. Otherwise, the photo frame will be damaged.
- Once the installation is complete, place the photo frame on a stable surface to avoid any possible movement.

## 1.1.2 Portrait position

To place the photo frame in portrait position, follow the steps below to install the stand.

1. Hold the photo frame in portrait position.
2. Attach the stand to the stand locking slot on the back of the photo frame.



3. Insert the stand into the stand locking slot as illustrated, until the stand is secured to the photo frame.



### **WARNING**

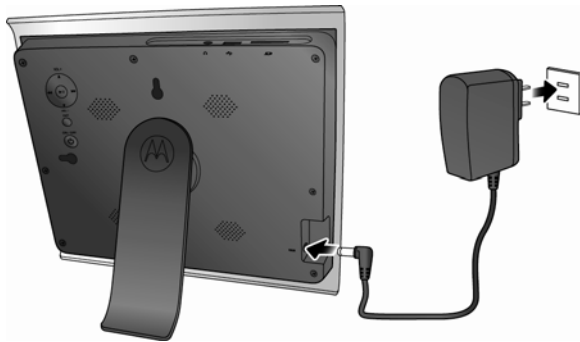
- Do not rotate the stand during the installation. Otherwise, the photo frame will be damaged.
- Once the installation is complete, place the photo frame on a stable surface to avoid any possible movement.



## 1.2 Connecting to power

Follow the steps below to connect the photo frame to a power outlet to turn on the power.

1. Plug one end of the AC power adapter to the power jack on the back of the photo frame.
2. Plug the other end into a power outlet. The power of the photo frame will be turned on.



3. Place the photo frame in landscape or portrait position on a stable surface.

### **NOTE**

Available plug types may vary depending on where you purchased this photo frame.

## 1.3 Inserting a memory card or a USB flash drive

The photo frame is preloaded with some photos in the internal memory. On the top of the photo frame, you can also insert a memory card or a USB flash drive containing the content you want to show on this unit.

### **NOTE**

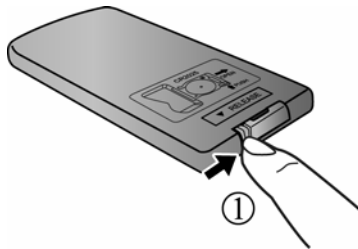
- After you insert a photo loaded memory card or USB flash drive and connect the photo frame to power, the photo frame will automatically start to display photos in slideshow mode.
- The memory card slot and USB port both support hot-swap function.
- The memory card slot accepts these types of memory cards: SD/SDHC or MMC.
- You can play audio and image files on the photo frame. The supported audio file format is MP3 (\*.mp3). The supported image file format is JPEG (\*.jpg).
- Video files are not supported on this photo frame.



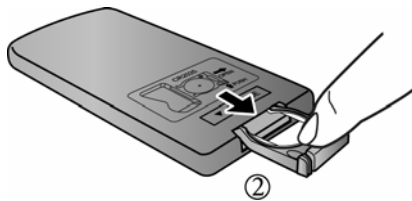
## 1.4 Replacing the remote control battery

The supplied remote control comes installed with a CR2025 lithium battery. When you need to replace the battery, follow the steps below.

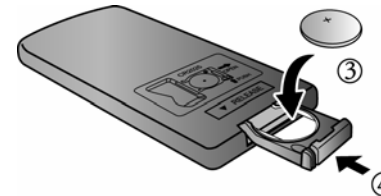
1. Slide the locking tab to the right.



2. Pull out the battery holder.



3. Insert the new battery into the battery holder. The battery must be placed with the positive pole facing upwards in the illustrated position.



4. Slide the battery holder into the remote control.

### **WARNING**

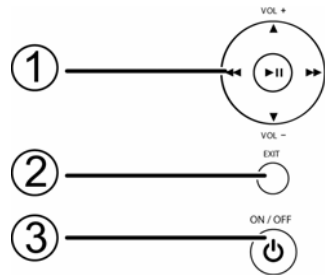
- *Protect the battery from overheating or excessive moisture.*
- *Failure to replace the battery in the correct manner may result in damage to the battery.*
- *Use only the approved specified batteries.*
- *Properly recycle or dispose of used batteries according to local guidelines and regulations.*
- *Do not throw batteries into fire. This may result in an explosion.*
- *If the battery is completely drained or the remote control is not in use for a long time, remove the battery to prevent leakage.*

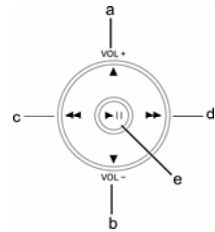
## 2. Using the photo frame

To operate the photo frame, you can:

- Use the control buttons on the back of the photo frame
- Or*
- Use the supplied remote control

### 2.1 Using the control buttons



No.	Description
1	<p><b>Navigation and ENTER buttons</b></p>  <p>a. <b>UP/VOL +</b>: moves up/increases the volume.  b. <b>DOWN/VOL -</b>: moves down/decreases the volume.  c. <b>RIGHT</b>: moves right.  d. <b>LEFT</b>: moves left.  e. <b>ENTER</b>: Enters/confirms the selection, or starts/pauses the playback.</p>
2	<p><b>EXIT button</b></p> <ul style="list-style-type: none"> <li>• Returns to the Main Menu.</li> <li>• Goes back to the previous page.</li> <li>• Stops the playback.</li> </ul>
3	<p><b>ON/OFF button</b></p> <ul style="list-style-type: none"> <li>• Turns on the screen backlight.</li> <li>• Turns off the screen backlight to enter Standby mode.</li> </ul>



When using the Main Menu	
Button	Function
UP/VOL+	Selects <b>Internal Memory, USB or Memory Card</b> .
DOWN/VOL-	Selects <b>Internal Memory, USB or Memory Card</b> .
LEFT	Selects <b>Photo, Music, Calendar, Wi-Fi or Settings</b> menu.
RIGHT	Selects <b>Photo, Music, Calendar, Wi-Fi or Settings</b> menu.
ENTER	Enters sub-pages of <b>Photo, Music, Calendar, Wi-Fi or Settings</b> menu.

When browsing photos in thumbnail view	
Button	Function
UP/VOL+	Moves up.
DOWN/VOL-	Moves down.
LEFT	Moves left.
RIGHT	Moves right.
ENTER	Displays the currently selected photo in Single Photo view.
EXIT	Goes back to the previous page.

When playing a slideshow	
Button	Function
ENTER	Starts/pauses the playback.
EXIT	Goes back to the previous page.

When using the Music menu	
Before playing music / When music is paused	
Button	Function
UP/VOL+	Selects the previous track.
DOWN/VOL-	Selects the next track.
LEFT	Selects the previous track.
RIGHT	Selects the next track.
When playing music	
Button	Function
UP/VOL+	Increases the volume.
DOWN/VOL-	Decreases the volume.
LEFT	Selects the previous track.
RIGHT	Selects the next track.



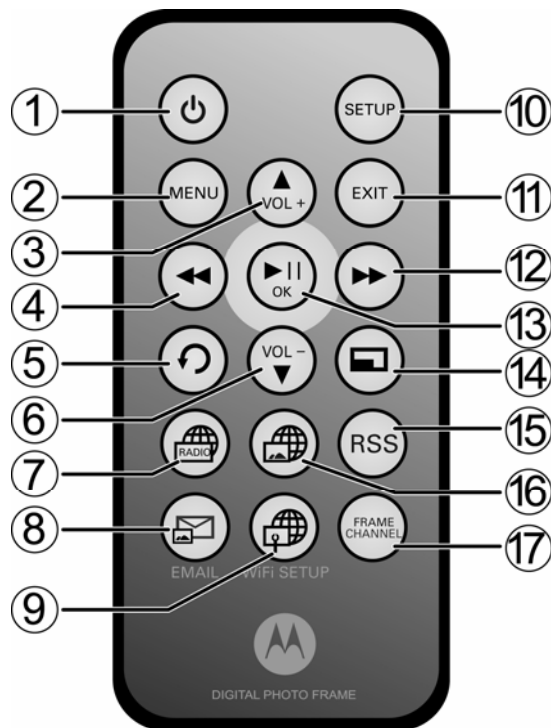
When using the Calendar menu	
Button	Function
LEFT	Selects <b>Photo, Music, Calendar, Wi-Fi</b> or <b>Settings</b> menu.
RIGHT	Selects <b>Photo, Music, Calendar, Wi-Fi</b> or <b>Settings</b> menu.
ENTER	Enters Calendar full screen mode when the <b>Calendar</b> menu is selected.
EXIT	Goes back to the previous page.

When using the Wi-Fi menu	
Button	Function
UP/VOL+	Moves up to select an item.
DOWN/VOL-	Moves down to select an item.
LEFT	Selects <b>Wi-Fi List, Wi-Fi Setup</b> or <b>Account Cfg.</b>
RIGHT	Selects <b>Wi-Fi List, Wi-Fi Setup</b> or <b>Account Cfg.</b>
ENTER	Enters the sub-page of <b>Wi-Fi List, Wi-Fi Setup</b> or <b>Account Cfg.</b>
EXIT	Goes back to the previous page.

When using the Settings menu	
Button	Function
UP/VOL+	Moves up to the previous sub-menu in <b>Settings</b> .
DOWN/VOL-	Moves down to the next sub-menu in <b>Settings</b> .
LEFT	Selects <b>Photo, Music, Calendar, Wi-Fi</b> or <b>Settings</b> menu.
RIGHT	Selects <b>Photo, Music, Calendar, Wi-Fi</b> or <b>Settings</b> menu.
ENTER	<ul style="list-style-type: none"> <li>• Enters sub-menus in <b>Settings</b>.</li> <li>• Enters/confirms the selection.</li> </ul>
EXIT	<ul style="list-style-type: none"> <li>• Quits sub-menus in <b>Settings</b>.</li> <li>• Goes back to the previous page.</li> </ul>

## 2.2 Using the remote control

The following table describes the buttons and their functions that are available on the supplied remote control.



No.	Description
1	<b>ON/OFF</b> <ul style="list-style-type: none"> <li>Turns on the screen backlight.</li> <li>Turns off the screen backlight to enter Standby mode.</li> </ul>
2	<b>MENU</b> <ul style="list-style-type: none"> <li>You can press this button to activate or deactivate <b>Copy One, Copy All, Delete One or Delete All</b> options in <b>Photo Viewer</b> and <b>Music Player</b>.</li> <li>Displays the <b>Add to favorites</b> option when using the <b>WEB Radio</b> menu in <b>Wi-Fi List</b>.</li> <li>Displays the <b>Send Mail</b> option when using the <b>Email</b> menu in <b>Wi-Fi List</b>.</li> </ul>
3	<b>UP/VOL +</b> Moves up or increases the volume.
4	<b>LEFT/PREVIOUS</b> Moves left or selects the previous item.
5	<b>ROTATE</b> You can press this button repeatedly to rotate the selected photo counterclockwise each time by 90 degrees.
6	<b>DOWN/VOL -</b> Moves down or decreases the volume.



No.	Description
7	<b>WEB Radio</b> You can press this shortcut key to access <b>WEB Radio</b> in <b>Wi-Fi List</b> to listen to radio stations on the web, when a Wi-Fi connection has been set up.
8	<b>EMAIL</b> You can press this shortcut key to access <b>Email</b> in <b>Wi-Fi List</b> to operate photo emails, when a Wi-Fi connection has been set up.
9	<b>WiFi SETUP</b> You can press this button to set up a Wi-Fi connection.
10	<b>SETUP</b> You can press this button to access the <b>Settings</b> menu.
11	<b>EXIT</b> Goes back to the previous page.
12	<b>RIGHT/NEXT</b> Moves right or selects the next item.
13	<b>ENTER (OK/PLAY/PAUSE)</b> Enters and confirms the selection, or starts/pauses the playback.
14	<b>ZOOM</b> Zooms in the photo by a factor of 2x, 4x, 8x and 16x.

15	<b>RSS</b> You can press this shortcut key to access RSS reader, when a Wi-Fi connection has been set up.
16	<b>PICASA</b> You can press this shortcut key to access Picasa web album service, when a Wi-Fi connection has been set up and your account has been configured.
17	<b>FRAME CHANNEL</b> You can press this shortcut key to access Frame Channel service, when a Wi-Fi connection has been set up and your account has been configured.

## 3. Using the menus

### 3.1 Using the Main Menu

After turning on the power of the photo frame, photos will play in slideshow mode automatically.

- If a memory card has been inserted, photos in the card will play in slideshow mode automatically.
- If no memory card is inserted, photos in the built-in memory will play in slideshow mode automatically.

To exit slideshow mode and return to the **Main Menu**, press the **EXIT** button on the back of the photo frame.



#### **NOTE**

To check the available space in Internal Memory, USB or Memory Card, select **Internal Memory**, **USB** or **Memory Card** and check the amount of free space shown on the bottom right corner.

In the **Main Menu**, you can:

- Press the **LEFT** or **RIGHT** button to select the **Photo**, **Music**, **Calendar**, **Wi-Fi** or **Settings** menu.
- Press the **UP/VOL +** or **DOWN/VOL -** button to select a device, including **Internal Memory**, **USB** or **Memory Card**.

## 3.2 Using the Photo menu

1. In the **Main Menu**, press the **LEFT** or **RIGHT** button to select the **Photo** menu.
2. Press the **UP/VOL+** or **DOWN/VOL-** button to select a device.
3. Press the **ENTER** button to enter **Photo Viewer**, which displays your photos in thumbnail view. In **Photo Viewer**, both photos and folders may display, depending on the content stored in your device.



- To browse or select a photo, use the **UP/VOL+**, **DOWN/VOL-**, **LEFT** and **RIGHT** buttons.
- To play photos in full screen single photo mode, press the **ENTER** button. Press the **ENTER** button again to start running slideshow.
- To make photos play with background music in slideshow mode, go to the **Settings** menu to set **Music slideshow** to **On**. (This function is only available when you have music files in the internal memory or inserted memory card/USB flash drive.)
- To switch to the previous or next photo in slideshow mode, press the **LEFT** or **RIGHT** button.
- To control the slideshow music volume, press the **UP/VOL+** or **DOWN/VOL-** button.
- To rotate a photo, press the **ROTATE** button on your remote control.
- To zoom in a photo, press the **ZOOM** button on your remote control.



### 3.2.1 Copying one or all photos

#### NOTE

- To copy photos from your memory card or USB to the internal memory, please insert your memory card or USB flash drive first.
  - Please use the supplied remote control for this operation.
1. In **Photo Viewer**, press the **MENU** button on the remote control. **Copy One**, **Copy All**, **Delete One** and **Delete All** options will appear on the screen.



2. Press the **LEFT** or **RIGHT** button to select **Copy One** or **Copy All**, and then press the **ENTER** button.

3. Press the **UP/VOL +** or **DOWN/VOL -** button to select **Yes**, and then press the **ENTER** button.
4. Press the **UP/VOL +** or **DOWN/VOL -** button to select the destination (**USB**, **Memory Card** or **Internal Memory**), and then press the **ENTER** button to confirm.

### 3.2.2 Deleting one or all photos

#### NOTE

*Please use the supplied remote control for this operation.*

1. In **Photo Viewer**, press the **MENU** button on the remote control. **Copy One**, **Copy All**, **Delete One** and **Delete All** options will appear on the screen.
2. Press the **LEFT** or **RIGHT** button to select **Delete One** or **Delete All**, and then press the **ENTER** button.
3. Press the **UP/VOL +** or **DOWN/VOL -** button to select **Yes**, and then press the **ENTER** button to confirm.



### 3.2.3 Auto rotation

The photo frame has a built-in tilt sensor that allows the photo frame to determine its own orientation relative to gravity and thereby automatically switch from displaying photos in portrait view to displaying photos in landscape view.



### 3.3 Using the Music menu

1. In the **Main Menu**, press the **LEFT** or **RIGHT** button to select the **Music** menu.
2. Press the **UP/VOL+** or **DOWN/VOL-** button to select a device.
3. Press the **ENTER** button to enter **Music Player**.



- To select the previous track, press the **UP/VOL+** or **LEFT** button.
- To select the next track, press the **DOWN/VOL-** or **RIGHT** button.
- To play the selected track, press the **ENTER** button.
- During music playing, volume bar shows on top right corner. To increase or decrease the volume, press the **UP/VOL+** or **DOWN/VOL-** button.

#### 3.3.1 Copying one or all music files

##### NOTE

- To copy music files from your memory card or USB to the internal memory, please insert your memory card or USB flash drive first.
- Please use the supplied remote control for this operation.

1. In **Music Player**, press the **MENU** button on the remote control. **Copy One**, **Copy All**, **Delete One** and **Delete All** options will appear on the screen.



2. Press the **LEFT** or **RIGHT** button to select **Copy One** or **Copy All**, and then press the **ENTER** button.
3. Press the **UP/VOL+** or **DOWN/VOL-** button to

select **Yes**, and then press the **ENTER** button.

4. Press the **UP/VOL+** or **DOWN/VOL-** button to select the destination (**USB, Memory Card** or **Internal Memory**), and then press the **ENTER** button to confirm.

### 3.3.2 Deleting one or all music files

#### **NOTE**

*Please use the supplied remote control for this operation.*

1. In **Music Player**, press the **MENU** button on the remote control. **Copy One, Copy All, Delete One** and **Delete All** options will appear on the screen.
2. Press the **LEFT** or **RIGHT** button to select **Delete One** or **Delete All**, and then press the **ENTER** button.
3. Press the **UP/VOL+** or **DOWN/VOL-** button to select **Yes**, and then press the **ENTER** button to confirm.

## 3.4 Using the Calendar menu

1. In the **Main Menu**, press the **LEFT** or **RIGHT** button to select the **Calendar** menu.
2. Press the **ENTER** button to enter the **Calendar** preview screen, and then press the **ENTER** button again to enter full screen mode in the **Calendar** menu. The slideshow automatically starts.



3. In full screen calendar mode, you can press the **ENTER** button to display one specific still photo or enter slideshow mode. To switch to next or previous photo, press the **RIGHT** or **LEFT** button.

#### **NOTE**

*If you have set the alarm, an alarm icon will show on the Calendar screen. For details about alarm settings, refer to "3.6.1 Setting an alarm".*

## 3.5 Using the Wi-Fi menu

To enjoy the provided web services, such as Picasa, Flickr and Frame Channel from the photo frame, you need to sign up an account for the web service you want to use on the Internet. Then, follow the steps below to set up Wi-Fi connection and make required account configurations, so you can use the web services in **Wi-Fi List**.

### 3.5.1 Step 1: Setting up Wi-Fi connection

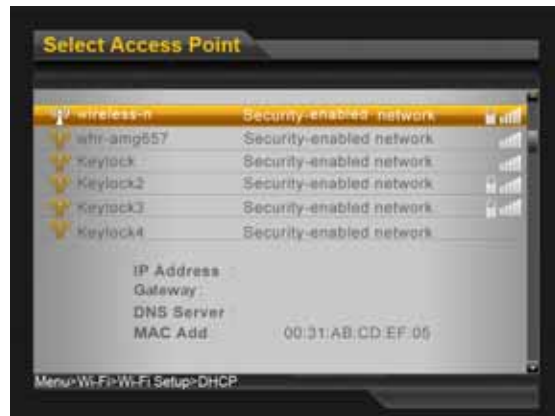
1. In the **Main Menu**, press the **LEFT** or **RIGHT** button to select the **Wi-Fi** menu, and then press the **ENTER** button.
2. Press the **RIGHT** and then the **ENTER** button to enter **Wi-Fi Setup** to search for an access point (AP) or use a static IP address.

If you are using automatic IP network:

- a. Choose **DHCP** for automatic connection in the **Wi-Fi Setup** menu.



- b. The **Select Access Point** screen appears and shows access points that are available nearby.



- c. Use the **UP/VOL +** or **DOWN/VOL -** button to select an access point, and then press the **ENTER** button.

- d. To connect to a security-enabled access point, you will be prompted to enter the password in the **Keyboard** screen that appears. (If you want to connect to a security-disabled network, skip Step d and e.)




- e. Enter the password. When finished, select **Done**, and then press the **ENTER** button.  
For details about how to use the keyboard, see the tips below.

### TIPS

*How to use the keyboard:*

- To select a value, press the **UP/VOL +**, **DOWN/VOL -**, **LEFT** and **RIGHT** buttons.
- To enter a value, press the **ENTER** button.

- To switch between uppercase and lowercase letters or switch to other symbols, use the control buttons to select **Shift**, and then press the **ENTER** button.
  - To cancel your last input, use the control buttons to select **Backspace**, and then press the **ENTER** button.
  - To enter a space, use the control buttons to select **Space**, and then press the **ENTER** button.
  - To go to the next field or move among fields, use the control buttons to select **Done**, and then press the **ENTER** button.
- f. Once the connection is established, the “Your connection was successful” message appears, and the  icon appears on the top right corner. Press the **EXIT** button to return to the **Wi-Fi** menu.

**If you are using static IP connection:**

- a. Choose **Static IP Address** in the **Wi-Fi Setup** menu.




- b. The **Choose AP** screen appears. Use the keyboard to enter your IP address, subnet mask, gateway and DNS server.



For details about how to use the keyboard, see the tips below.

### **TIPS**

*How to use the keyboard:*

- To select a value, press the **UP/VOL +**, **DOWN/VOL -**, **LEFT** and **RIGHT** buttons.
  - To move the cursor, use the control buttons to select **Next** or **Prev**, and then press the **ENTER** button.
  - To go to the next field or move among fields, use the control buttons to select **Done**, and then press the **ENTER** button.
- c. When finished, select **Done**, and then press the **ENTER** button.
- d. Once the connection is established, the “Your connection was successful” message appears, and the  icon appears on the top right corner. Press the **EXIT** button to return to the **Wi-Fi** menu.



## 3.5.2 Step 2: Configuring your accounts

### 3.5.2.1 Configuring your Picasa account

#### **NOTE**

*Before making the following configurations, you need to sign up for a Picasa account on the Internet first.*

1. Press the **LEFT** or **RIGHT** button to select **Account Cfg** from the **Wi-Fi** menu, and then press the **ENTER** button.
2. Press the **ENTER** button to select **Picasa**.
3. In the **Keyboard** screen that appears, enter your account in the **Account** field.



4. Use the control buttons to select **Done**, and then press the **ENTER** button to move to the next field.
5. Continue to enter your password in the **Password** field.
6. Use the control buttons to select **Done**, and then press the **ENTER** button to complete.
7. Now you will be able to use **Picasa** in the **Wi-Fi List**.

### 3.5.2.2 Configuring your Flickr account

#### **NOTE**

Before making the following configurations, you need to sign up for a Flickr account on the Internet first.

1. Press the **LEFT** or **RIGHT** button to select **Account Cfg** from the **Wi-Fi** menu, and then press the **ENTER** button.
2. Press the **DOWN/VOL—** button to move to **Flickr**, and then press the **ENTER** button.
3. In the **Keyboard** screen that appears, enter your Flickr account (full email address) in the **Email Adr:** field.



4. When finished, use the control buttons to select **Done**, and then press the **ENTER** button to complete.
5. Now you will be able to use **Flickr** in the **Wi-Fi List**.

### 3.5.2.3 Configuring your Frame Channel account

#### **NOTE**

Before making the following configurations, you need to sign up for a Frame Channel account on the Internet first.

1. Press the **LEFT** or **RIGHT** button to select **Account Cfg** from the **Wi-Fi** menu, and then press the **ENTER** button.
2. Press the **DOWN/VOL—** button to move to **Frame Channel**, and then press the **ENTER** button.
3. In the **Keyboard** screen that appears, enter your account in the **Account** field.





4. Use the control buttons to select **Done**, and then press the **ENTER** button to move to the next field.
5. Continue to enter the 4-digit PIN code you set for your Frame Channel account in the **PIN** field.

#### **NOTE**

*A 4-digit PIN code is different from a Frame Channel password. The PIN code is a unique identifier that Frame Channel uses to create your Frame Channel slideshow and send it to your photo frame. The Password is what you use to log into the [www.framechannel.com](http://www.framechannel.com) web site.*

6. Use the control buttons to select **Done**, and then press the **ENTER** button to complete.
7. Now you will be able to use **Frame Channel** in the **Wi-Fi List**.

### **3.5.2.4 Configuring RSS**

RSS (Really Simple Syndication) is a method used to publish frequently updated web site content, such as news headlines, blog entries or podcasts. An RSS document (called a “feed”) contains a summary of content from an associated web site or the full text. When you subscribe to an RSS feed, you will receive an update once the publisher releases new content. You can view RSS feeds that you have subscribed to with the provided RSS Feed Viewer in the **Wi-Fi List**.

1. Press the **LEFT** or **RIGHT** button to select **Account Cfg** from the **Wi-Fi** menu, and then press the **ENTER** button.
2. Press the **DOWN/VOL —** button to move to **RSS**, and then press the **ENTER** button.

3. The **Keyboard** screen appears and shows the web address of the default RSS channel. You can clear the web address by using the **Backspace** key, and then enter the web address of another RSS channel you want to subscribe to.



4. Use the control buttons to select **Done**, and then press the **ENTER** button to complete.

### 3.5.2.5 Configuring your email account

1. Press the **LEFT** or **RIGHT** button to select **Account Cfg** from the **Wi-Fi** menu, and then press the **ENTER** button.
2. Press the **DOWN/VOL—** button to move to **Mail Config**, and then press the **ENTER** button.

3. In the **Mail Config** screen that appears, use the keyboard to enter your POP server, POP port, SSL, SMTP server, SMTP port, email account and password in the fields.



4. Use the control buttons to select **Done**, and then press the **ENTER** button to complete.

For examples about email server settings, refer to the table below.

Free email provider	POP server	POP port	SSL	SMTP server	SMTP port
Gmail	pop.gmail.com	995	1	smtp.gmail.com	465
Yahoo	pop.mail.yahoo.com	110	0	smtp.mail.yahoo.com	25

## 3.5.3 Step 3: Using web services

### 3.5.3.1 Using Picasa

1. Press the **LEFT** or **RIGHT** button to select **Wi-Fi List** from the **Wi-Fi** menu, and then press the **ENTER** button.
2. Press the **ENTER** button to enter **Picasa**. The screen will display web albums that you have created on your Picasa account.
3. Press the **UP/VOL +**, **DOWN/VOL -**, **LEFT** and **RIGHT** buttons to select an album if you have multiple ones.
4. Press the **ENTER** button to enter the selected album.
  - To play photos in full screen single photo mode, press the **ENTER** button.
  - To start running slideshow, press the **ENTER** button again.
5. To quit, press the **EXIT** button.

#### **NOTE**

To copy a photo, select the photo in thumbnail mode and press the **MENU** button on the remote control. When the **Copy One** option appears, press the **ENTER** button to select **YES**, use the **UP/VOL +** or **DOWN/VOL -** button to select the destination (Internal Memory, USB or Memory Card), and then press the **ENTER** button to proceed.

### 3.5.3.2 Using Flickr

1. Press the **LEFT** or **RIGHT** button to select **Wi-Fi List** from the **Wi-Fi** menu, and then press the **ENTER** button.
2. Press the **DOWN/VOL -** button to select **Flickr**, and then press the **ENTER** button. The screen will display public web albums that you have created on your Flickr account.
3. Press the **UP/VOL +**, **DOWN/VOL -**, **LEFT** and **RIGHT** buttons to select an album if you have multiple ones.
4. Press the **ENTER** button to enter the selected album.
  - To play photos in full screen single photo mode, press the **ENTER** button.
  - To start running slideshow, press the **ENTER** button again.
5. To quit, press the **EXIT** button.

#### **NOTE**

To copy a photo, select the photo in thumbnail mode and press the **MENU** button on the remote control. When the **Copy One** option appears, press the **ENTER** button to select **YES**, use the **UP/VOL +** or **DOWN/VOL -** button to select the destination (Internal Memory, USB or Memory Card), and then press the **ENTER** button to proceed.

### 3.5.3.3 Using Frame Channel

1. Press the **LEFT** or **RIGHT** button to select **Wi-Fi List** from the **Wi-Fi** menu, and then press the **ENTER** button.
2. Press the **DOWN/VOL—** button to select **Frame Channel**, and then press the **ENTER** button. The screen will display web photos that you have uploaded on your Frame Channel account.
  - To play photos in full screen single photo mode, press the **ENTER** button.
  - To start running slideshow, press the **ENTER** button again.
3. To quit, press the **EXIT** button.

#### **NOTE**

*To copy a photo, select the photo in thumbnail mode and press the **MENU** button on the remote control. When the **Copy One** option appears, press the **ENTER** button to select **YES**, use the **UP/VOL+** or **DOWN/VOL—** button to select the destination (Internal Memory, USB or Memory Card), and then press the **ENTER** button to proceed.*

### 3.5.3.4 Using RSS

1. Press the **LEFT** or **RIGHT** button to select **Wi-Fi List** from the **Wi-Fi** menu, and then press the **ENTER** button.
2. Press the **DOWN/VOL—** button to select **RSS**, and then press the **ENTER** button. The screen will display the most recently updated RSS feeds.



3. Press the **UP/VOL+** or **DOWN/VOL—** button to select a RSS feed.
4. Press the **ENTER** button to view the selected RSS feed.
5. To quit, press the **EXIT** button.

### 3.5.3.5 Using WEB Radio

#### **NOTE**

*Please use the supplied remote control for this operation.*

1. Press the **LEFT** or **RIGHT** button to select **Wi-Fi List** from the **Wi-Fi** menu, and then press the **ENTER** button.
2. Press the **DOWN/VOL—** button to select **WEB Radio**, and then press the **ENTER** button.
3. Press the **UP/VOL+** or **DOWN/VOL—** button to select the category of radio channels you want to listen to, and then press the **ENTER** button.
4. Press the **UP/VOL+** or **DOWN/VOL—** button to select a radio program you want to listen to, and then press the **ENTER** button.
5. In the list that appears, press the **UP/VOL+** or **DOWN/VOL—** button to select a program entry.
  - To play the selected program entry, press the **ENTER** button to proceed with streaming. To stop the playback, press the **ENTER** button again.
  - When the program entry plays, you can press the **UP/VOL+** or **DOWN/VOL—** button to adjust the volume.

- To add the selected program entry to the **Favorites** list, press the **MENU** button on the remote control. When **Add to favorites** appears, the selected program entry has been added to the **Favorites** list.



6. To quit, press the **EXIT** button.

7. If you have added radio program entries to the **Favorites** list, the **WEB Radio** screen will show **Favorites**, **Search** and **Delete One** options when you access **WEB Radio** next time.



- **Favorites:**  
In this option, you can press the **UP/VOL+** or **DOWN/VOL-** button to select a program entry, and then press the **ENTER** button to start streaming and playback.

#### **NOTE**

*To play another program entry in the **Favorites** list, you need to stop the current program playback first by pressing the **ENTER** button. Use **UP/VOL+** or **DOWN/VOL-** button to select another program entry, and then press the **ENTER** button to start streaming and playback.*

- **Search:**  
In this option, you can press the **UP/VOL+** or **DOWN/VOL-** button to search for all radio programs that are available for playback.
- **Delete One:**  
In this option, you can press the **UP/VOL+** or **DOWN/VOL-** button to select the radio program entry to be removed from the **Favorites** list, and then press the **ENTER** button to delete it.



### 3.5.3.6 Using Email


1. Press the **LEFT** or **RIGHT** button to select **Wi-Fi List** from the **Wi-Fi** menu, and then press the **ENTER** button.
2. Press the **DOWN/VOL—** button to select **Email**, and then press the **ENTER** button.

#### 3.5.3.6.1 Adding your contacts to the Welcome list

To prevent from receiving junk mail, the photo frame only receives photo emails from the contacts that have been added to the Welcome list. Therefore, you need to add your contacts to the Welcome list, before you can receive photo emails from them.

1. In **Email**, press the **LEFT** or **RIGHT** button to select **Welcome list**, and then press the **ENTER** button.
2. Select **Add** and then press the **ENTER** button.
3. In the **Add** screen that appears, enter the name and email address of the contact to be added.
4. When finished, use the control buttons to select **Done**, and then press the **ENTER** button to complete.
5. Once you have added your contacts to the **Welcome list**, you will be able to receive photo emails from these contacts.

#### 3.5.3.6.2 Receiving photo emails

1. Press the  button on the remote control to access **Email** in **Wi-Fi List**.  
The “Checking email” message appears and the photo frame starts checking for new photo emails.
2. If you have received a new photo email, the “Downloading E-mail images .....” message appears.



3. Then, the following screen appears, asking whether you want to play photo(s) received in this email in slideshow mode.



4. The photos received from the email will be downloaded to your internal memory automatically. You can also check them in **Photo Viewer** in the **Photo** menu.

### 3.5.3.6.3 Viewing received photo emails on inbox

1. In **Email**, press the **LEFT** or **RIGHT** button to select **Inbox**, and then press the **ENTER** button.
2. You can press the **UP/VOL+** or **DOWN/VOL-** button to browse photo emails received from different contacts, and then press the **ENTER** button to view photo emails received from the selected contact.



3. To quit, press the **EXIT** button.

#### **NOTE**

*Inbox only receives the emails that contain photos in your email box.*

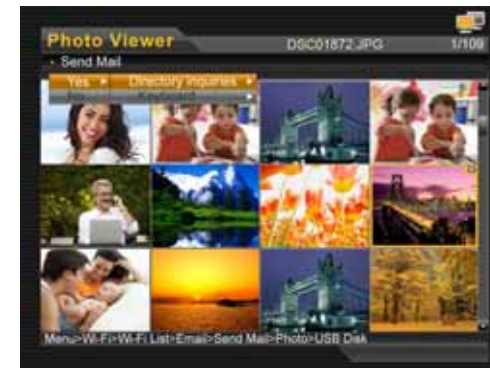
### 3.5.3.6.4 Sending a photo by email

#### **NOTE**

*Please use the supplied remote control for this operation.*

1. In **Email**, press the **LEFT** or **RIGHT** button to select **Send Mail**, and then press the **ENTER** button.
2. Select the source of the photo you want to send (**Internal Memory**, **USB** or **Memory Card**), and then press the **ENTER** button.
3. Press the **UP/VOL+**, **DOWN/VOL-**, **LEFT** and **RIGHT** buttons to select a photo you want to send.
4. Press the **MENU** button on the remote control.
5. When the **Send Mail** option appears, press the **ENTER** button.

6. Select **Yes** and then press the **ENTER** button to continue.



- To look for history of email addresses sent before, select **Directory inquiries**, use the **UP/VOL+** or **DOWN/VOL-** button to select an email address, and then press the **ENTER** button.
  - To enter the email address directly, select **Keyboard**, and then press the **ENTER** button.
7. Once you have entered an email address, press the **ENTER** button to proceed. The “Sending photo mail...” message appears.
  8. When the photo has been sent successfully, the “Send success” message appears.



---

**NOTE**

*If the photo is not sent successfully, the “Send fail” message appears on the screen. Please verify the email address you entered.*

**3.5.3.6.5 Editing or deleting the contacts in the Welcome list**

1. In **Email**, press the **LEFT** or **RIGHT** button to select **Welcome list**, and then press the **ENTER** button.

**Deleting a contact:**

- a. Press the **LEFT** or **RIGHT** button to select **Delete**.
- b. Press the **UP/VOL+** or **DOWN/VOL-** button to select the contact you want to remove from the list.
- c. Press the **ENTER** button to delete the selected contact.

**Editing a contact:**

- a. Press the **LEFT** or **RIGHT** button to select **Edit**.
  - b. Press the **UP/VOL+** or **DOWN/VOL-** button to select the contact you want to edit.
  - c. Use the keyboard to edit the selected contact.
  - d. Use the control buttons to select **Done**, and then press the **ENTER** button to complete.
2. To quit, press the **EXIT** button.

## 3.6 Using the Settings menu

1. In the **Main Menu**, press the **LEFT** or **RIGHT** button to select the **Settings** menu.
2. Press the **ENTER** button to enter the **Settings** menu.
  - To move among sub-menus under **Settings**, press the **UP/VOL+** or **DOWN/VOL-** button.
  - To apply the settings you have selected, press the **ENTER** button.
  - To go back to the previous page, press the **EXIT** button.



You can control all function settings of the photo frame from the **Settings** menu. Refer to the table below for more information.

Sub-menu	Option	Description/Function
Slideshow frequency	5 seconds	Selects the speed of slideshow.
	10 seconds	
	30 seconds	
	1 minute	
	1 hour	
Transition effect	1 day	Selects the transition effect to be applied in slideshow.
	No effect	
	Random	
	Fade out	
	Fade in	
	Left to Right	
	Horizontal open	
	Horizontal close	



Sub-menu	Option	Description/Function	Languages	English	Selects an OSD (On-screen display) language.
Date & Time setting	Year	Allows you to set up the date and time.		French	
	Month			German	
	Day			Italian	
	Hour			Spanish	
	Minute			Portuguese	
	Time Format			Dutch	
Alarm setting	Alarm on/off	Activates/deactivates the alarm clock function.		Russian	
	Alarm hour	Sets the alarm hour.		Swedish	
	Alarm minute	Sets the alarm minute.		Danish	
	Volume	Sets the alarm volume level.		Finnish	
	Tone	Selects the type of alarm tones: Beep or MP3.		Norwegian	
	Day	Allows you to set the alarm recurring everyday or on weekdays.		Polish	
				Hungarian	
				Hebrew	
			Turkish		
			Greek		



Sub-menu	Option	Description/Function
On/Off schedule	Auto On/Off	Enables/disables the Auto power on/power off options.
	Auto on hour	Powers on the photo frame automatically according to the time length you set.
	Auto on minute	
	Auto off hour	Powers off the photo frame automatically according to the time length you set.
	Auto off minute	
Display	Brightness	Sets the level of brightness.
	Contrast	Sets the level of contrast.
Photo view options	Original	Displays photos in their original aspect ratio.
	Fit to screen	Optimizes photos to fit the whole screen.
Music slideshow	On	Turns on background music in slideshow mode.
	Off	Turns off background music in slideshow mode.

Copy option	Original size	Use the original file size when copying photos or music.
	Reduce size	Use the reduced file size when copying photos or music.
Default settings	EXIT	Cancels the task.
	OK	Resets to system default settings.
Clear internal memory	EXIT	Cancels the task.
	OK	Formats the internal memory. <b>WARNING:</b> <i>This option will delete all the photo and music files stored on the internal memory.</i>



### 3.6.1 Setting an alarm

1. In the **Main Menu**, press the **LEFT** or **RIGHT** button to select the **Settings** menu.
2. Press the **ENTER** button to enter the **Settings** menu.
3. Press the **DOWN/VOL—** button to select **Alarm setting**, and then press the **ENTER** button.
4. Press the **LEFT** or **RIGHT** button to set the alarm to **On**.
5. Continue to adjust the alarm hour, minute, volume, tone and Day.

In the **Day** option, you can select **Everyday** or **Weekday**. When **Everyday** is selected, alarm repeats everyday, including Saturday and Sunday. When **Weekday** is selected, alarm repeats from Monday to Friday.

#### **NOTE**

- *When the alarm goes on, you can press the **EXIT** button to stop the alarm or press the **ENTER (OK/PLAY/PAUSE)** button to activate the snooze function.*
- *If you choose **MP3** in the **Tone** option, music stored in the built-in memory will be used as the alarm tone.*
- *If no music file is available in the memory, **Beep** tone will be used as the alarm tone.*



### 3.6.2 Enabling auto on/off

The photo frame comes with the Programmable On/Off Time feature, making it possible to power on and off automatically according to the time you set.

1. In the **Main Menu**, press the **LEFT** or **RIGHT** button to select the **Settings** menu.
2. Press the **ENTER** button to enter the **Settings** menu.
3. Press the **DOWN/VOL—** button to select **On/Off schedule**, and then press the **ENTER** button.
4. Press the **LEFT** or **RIGHT** button to select **On**.
5. Continue to set the Auto on/off time.
  - To move among entries, press the **UP/VOL+** or **DOWN/VOL—** button.
  - To adjust the time, press the **LEFT** or **RIGHT** button.

#### **NOTE**

*When the photo frame has been powered off automatically, you can press any control buttons or any buttons on the remote control to resume the system at any time. Once it reaches the scheduled Off time, the photo frame will power off automatically still.*



## 4. General information

### If your product is not working properly...

1. Read this User's Guide or the Quick Start Guide.
2. Visit our website:  
[www.motorola.com](http://www.motorola.com)
3. Contact Customer Service:
  - 1-888-331-3383 in US and Canada
  - 0845 218 0890 in UK
  - (65) 68412668 in Singapore

### Consumer Products and Accessories purchased in the United States, Canada, UK and Singapore.

#### What Does this Warranty Cover?

Subject to the exclusions and limitations contained below, Binatone Electronics International LTD. warrants the Motorola branded consumer products that it manufactures ("Products") and the Motorola branded or certified accessories sold for use with these Products that it manufactures ("Accessories") to be free from defects in materials and workmanship under normal consumer usage for the period(s) outlined below. This limited warranty is a consumer's exclusive remedy, and only applies as follows to new Motorola branded Products and Accessories manufactured by Binatone Electronics International LTD., and purchased by consumers in the United States or Canada, which are accompanied by this written warranty:

#### Who is covered?

This warranty covers only the first consumer purchaser, and is not transferable.



---

**What will BINATONE ELECTRONICS INTERNATIONAL LTD. do?**

BINATONE ELECTRONICS INTERNATIONAL LTD., at its sole option, will at no charge repair, replace or refund the purchase price of any Products or Accessories that does not conform to this warranty. Binatone Electronics International LTD. may use functionally equivalent reconditioned/ refurbished/ pre-owned or new Products, Accessories or parts in such repair or replacement and any Products, Accessories or parts removed or being replaced under this warranty become the property of Binatone Electronics International LTD.

**What Other Limitations Are There?**

ANY IMPLIED WARRANTIES OR CONDITIONS IRRESPECTIVE OF WHETHER THEY ARE IMPOSED BY LAW OR OTHERWISE, INCLUDING WITHOUT LIMITATION THE IMPLIED WARRANTIES OF MERCHANTABILITY AND FITNESS FOR A PARTICULAR PURPOSE, SHALL BE LIMITED TO THE DURATION OF THIS LIMITED WARRANTY, OTHERWISE THE REPAIR, REPLACEMENT, OR REFUND AS PROVIDED UNDER THIS EXPRESS LIMITED WARRANTY IS THE EXCLUSIVE REMEDY OF THE CONSUMER, AND IS PROVIDED IN LIEU OF ALL WARRANTIES AND MOTOROLA AND BINATONE ELECTRONICS INTERNATIONAL LTD. MAKES NO OTHER WARRANTIES OR CONDITIONS, EXPRESS OF IMPLIED. IN NO EVENT SHALL MOTOROLA OR BINATONE ELECTRONICS

INTERNATIONAL LTD. BE LIABLE, WHETHER UNDER THIS LIMITED WARRANTY OR IN CONTRACT OR TORT (INCLUDING NEGLIGENCE OR STRICT PRODUCT LIABILITY) OR OTHERWISE FOR DAMAGES OR CLAIMS IN EXCESS OF THE PURCHASE PRICE OF THE PRODUCT OR ACCESSORY, OR FOR ANY INDIRECT, INCIDENTAL, SPECIAL OR CONSEQUENTIAL DAMAGES OF ANY KIND, OR LOSS OF REVENUE, SAVINGS OR PROFITS, LOSS OF BUSINESS, LOSS OF PROGRAMS DATA INFORMATION (WHETHER CONFIDENTIAL PROPRIETARY OR PERSONAL IN NATURE OR OTHERWISE) OR OTHER FINANCIAL LOSS ARISING OUT OF OR IN CONNECTION WITH THE ABILITY OR INABILITY TO USE THE PRODUCTS OR ACCESSORIES AND BINATONE ELECTRONICS INTERNATIONAL LTD. SHALL UNDER NO CIRCUMSTANCES BE LIABLE FOR ANY CLAIMS OR DEMANDS MADE BY ANY THIRD PARTY OR MADE BY YOU ON BEHALF OF ANY THIRD PARTY TO THE FULL EXTENT THESE DAMAGES OR CLAIMS MAY BE DISCLAIMED BY LAW.

Some states, countries or jurisdictions do not allow the limitation or exclusion of incidental or consequential damages, or limitation on the length of an implied warranty, so the above limitations or exclusions may not apply to you in such states, countries or jurisdictions. This warranty gives you specific legal rights, and you may also have other rights that vary from state to state or from one country/jurisdiction to another.



Products or Accessories Covered	Length of Coverage
<b>Consumer Products</b>	<b>One (1) year</b> from the date of purchase by the first consumer purchaser of the product.
<b>Consumer Accessories</b>	<b>Ninety (90) days</b> from the date of purchase by the first consumer purchaser of the accessory.
<b>Consumer Products and Accessories that are Repaired or Replaced</b>	<b>The balance of the original warranty or for ninety (90) days</b> from the date returned to the consumer, whichever is longer.

**Exclusions**

**Normal Wear and Tear.** Periodic maintenance, repair and replacement of parts due to normal wear and tear are excluded from coverage.

**Abuse & Misuse.** Defects or damage that result from: (a) improper or unreasonable use, operation, storage, misuse or abuse, accident or neglect or other external cause, such as physical damage (cracks, scratches, etc.) to the surface of the product resulting from misuse; (b) your failure to follow or operation outside the usage parameters stated in the user instructions that came with the Products or Accessories; (c) contact with liquid, water, rain, extreme humidity or heavy perspiration, sand, dirt or the like, extreme heat, or food; (d) use of the Products or Accessories for commercial purposes or subjecting the Product or Accessory to abnormal usage or conditions; or (e) other acts or omissions which are not the fault or neglect of Motorola or Binatone Electronics International LTD., are excluded from coverage.

**Use of Non-Motorola branded Products and Accessories.** Defects or damage that result from the use of Non-Motorola branded or certified Products or Accessories or other peripheral equipment are excluded from coverage.

**Unauthorized Service or Modification.** Defects or damages resulting from service, testing, adjustment, installation, maintenance, alteration, or modification in any way by someone other than Motorola, Binatone Electronics International LTD. or its authorized service centers, are excluded from coverage.



**Altered Products.** Products or Accessories with (a) serial numbers or date tags that have been removed, altered or obliterated; (b) broken seals or that show evidence of tampering; (c) mismatched board serial numbers; or (d) nonconforming or non-Motorola branded housings, or parts, are excluded from coverage.

**Communication Services.** Defects, damages, or the failure of Products or Accessories due to any communication service or signal you may subscribe to or use with the Products or Accessories is excluded from coverage.

#### **How to Obtain Warranty Service or Other Information?**

To obtain service or information, please call:  
1-888-331-3383 in US and Canada  
0845 218 0890 in UK  
(65) 68412668 in Singapore

You will receive instructions on how to ship the Products or Accessories, the shipment of which shall be at your own risk and expense, to a BINATONE ELECTRONICS INTERNATIONAL LTD. Authorized Repair Center. To obtain service, you must include: (a) a copy of your receipt, bill of sale or other comparable proof of purchase of the Products or Accessories showing the date of purchase; (b) a written description of the problem; and, most importantly; (c) your address and telephone number.

These terms and conditions constitute the complete warranty agreement between you and BINATONE ELECTRONICS INTERNATIONAL LTD. regarding the Products or Accessories purchased by you, and supersede any prior agreement or representations, including representations made in any literature publications or promotional materials issued by BINATONE ELECTRONICS INTERNATIONAL LTD. or representations made by any agent employee or staff of BINATONE ELECTRONICS INTERNATIONAL LTD., that may have been made in connection with the said purchase.

## Compliance Information

### Declaration of Conformity



This product is in compliance with the essential requirements and other relevant provisions of Directive 2004/108/EC and 1999/5/EC:

European Standard ETSI EN 300 328 V1.7.1 (2006-10), EN 301 489-1 V1.8.1 (2008-04), EN 301 489-17 V1.3.2 (2008-04), EN55022:2006 Class B, EN61000-3-2:2006, EN61000-3-3:1995/A1:2001/A2:2005 and EN55024:1998/A1:2001/A2:2003 (IEC 61000-4-2:Edition 1.2:2001-04, IEC 61000-4-3:Edition 2.1:2002-09, IEC 61000-4-4:Second edition:2004-07, IEC 61000-4-5:Edition 1.1:2001-04, IEC 61000-4-6:Edition 2.1:2004-11, IEC 61000-4-8:Edition 1.1:2001-03, IEC 61000-4-11:Second Edition:2004-03) and Australian Standard AS/NZS CISPR 22:2006 Class B.



RADIO TEST REPORT

Report No.: ER930424



## CE RADIO TEST REPORT

according to

ETSI EN 300 328 V1.7.1 (2006-10)

<b>Equipment</b>	: Digital Photo Frame
<b>Model No.</b>	: LS1000W
<b>Reference Number</b>	: MP-9695
<b>Brand Name</b>	: Motorola
<b>Filing Type</b>	: New Application
<b>Applicant</b>	: Binatone Electronics International Ltd. Floor 23A, 9 Des Voeux Road West, Hong Kong
<b>Manufacturer</b>	: Qisda (Suzhou) Co., Ltd. No. 169, Zhujiang Road, New District, Suzhou, Jiangsu 215129, P.R. China  Qisda Czech s.r.o. Turanka 114, 62700 Brno Slatina, Czech Republic  Qisda Czech s.r.o. Turanka 98B, 62700 Brno Slatina, Czech Republic  Qisda Mexicana S.A. De C.V. Calle Venustiano Carranza, No. 88 Col. Plutarco Elias Calles, 21376 Mexicali B.C. Mexico C.P. MEXICO  Qisda Optronics (Suzhou) Co., Ltd. No. 169, Zhujiang Road, New District, Suzhou, Jiangsu 215129, P.R. China  Qisda Corporation 157, Shan-Ying Road, Gueishan, Taoyuan 333, Taiwan
<b>Received Date</b>	: Mar. 24, 2009
<b>Final Test Date</b>	: Mar. 30, 2009

### Statement

**Test result included is only for the 802.11b/g of the product.**

The test result in this report refers exclusively to the presented test model / sample.

Without written approval of SPORTON International Inc., the test report shall not be reproduced except in full.

The measurements and test results shown in this test report were made in accordance with the procedures and found in compliance with the limit given in ETSI EN 300 328 V1.7.1 (2006-10).

The test equipment used to perform the test is calibrated and traceable to NML/ROC.

**SPORTON International Inc.**

6F, No. 106, Sec. 1, Hsin Tai Wu Rd., Hsi Chih, Taipei Hsien, Taiwan, R.O.C.

SPORTON International Inc.  
Report Format version: a

## CE EMF ASSESSMENT REPORT

according to  
EN 50385:2002

Equipment : Digital Photo Frame  
 Model No. : LS1000W  
 Reference Number : MP-9695  
 Brand Name : Motorola  
 Filing Type : New Application  
 Applicant : Binatone Electronics International Ltd.  
 Floor 23A, 9 Des Voeux Road West, Hong Kong  
 Manufacturer : Qisda (Suzhou) Co., Ltd.  
 No. 169, Zhujiang Road, New District, Suzhou, Jiangsu 215129,  
 P.R. China  
 Qisda Czech s.r.o  
 Turanka 114, 62700 Brno Slatina, Czech Republic  
 Qisda Czech s.r.o  
 Tufanka 98B, 62700 Brno Slatina, Czech Republic  
 Qisda Mexicana S.A. De C.V.  
 Calzada Venustiano Carranza, No. 88 Col. Plutarco Elias Calles,  
 21376 Mexocalli, B.C. Mexico C.P. MEXICO  
 Qisda Optronics (Suzhou) Co., Ltd.  
 No. 169, Zhujiang Road, New District, Suzhou, Jiangsu 215129,  
 P.R. China  
 Qisda Corporation  
 157, Shan-Ying Road, Gueishan, Taoyuan 333, Taiwan  
 Received Date : Mar. 24, 2009  
 Final Test Date : Mar. 30, 2009

### Statement

The assessment result in this report refers exclusively to the presented assessment model / sample.  
 Without written approval of SPORTON International Inc., the assessment report shall not be reproduced  
 except in full. The assessment result shown in this report were made in accordance with the procedures and  
 found in compliance with EN 50385:2002. Sporton International as requested by the applicant to evaluate  
 the human exposure to electromagnetic fields (EMF) essential requirements of the product sample received  
 on Mar. 24, 2009 would like to declare that this sample has been evaluated and found to be in compliance  
 with this standard(s).

  
 Sam Lee / Supervisor

## CE EMC TEST REPORT



according to

EN 301 489-1 V1.8.1 (2008-04)  
 EN 301 489-17 V1.3.2 (2008-04)

Equipment : Digital Photo Frame  
 Model No. : LS1000W  
 Reference Number : MP-9695  
 Brand Name : Motorola  
 Filing Type : New Application  
 Applicant : Binatone Electronics International Ltd.  
 Floor 23A, 9 Des Voeux Road West, Hong Kong  
 Manufacturer : Qisda (Suzhou) Co., Ltd.  
 No. 169, Zhujiang Road, New District, Suzhou, Jiangsu 215129,  
 P.R. China  
 Qisda Czech s.r.o  
 Turanka 114, 62700 Brno Slatina, Czech Republic  
 Qisda Czech s.r.o  
 Tufanka 98B, 62700 Brno Slatina, Czech Republic  
 Qisda Mexicana S.A. De C.V.  
 Calzada Venustiano Carranza, No. 88 Col. Plutarco Elias Calles,  
 21376 Mexocalli, B.C. Mexico C.P. MEXICO  
 Qisda Optronics (Suzhou) Co., Ltd.  
 No. 169, Zhujiang Road, New District, Suzhou, Jiangsu 215129,  
 P.R. China  
 Qisda Corporation  
 157, Shan-Ying Road, Gueishan, Taoyuan 333, Taiwan  
 Received Date : Mar. 31, 2009  
 Final Test Date : Apr. 02, 2009

### Statement

The test result in this report refers exclusively to the presented test model / sample.  
 Without written approval of SPORTON International Inc., the test report shall not be reproduced except in full.  
 The test equipment used to perform the test is calibrated and traceable to NML/ROC.

**SPORTON International Inc.**

6F, No. 106, Sec. 1, Hsin Tai Wu Rd., Hsi Chih, Taipei Hsien, Taiwan, R.O.C.



### FCC Statement

This device complies with Part 15 Subpart B of the FCC Rules. Operation is subject to the following two conditions: (1) this device may not cause harmful interference, and (2) this device must accept any interference received, including interference that may cause undesired operation.

This equipment has been tested and found to comply with the limits for a Class B digital device, pursuant to Part 15 Subpart B of the FCC Rules. These limits are designed to provide reasonable protection against harmful interference in a residential installation. This equipment generates, uses, and can radiate radio frequency energy, and if not installed and used in accordance with the instructions, may cause harmful interference to radio communications. However, there is no guarantee that interference will not occur in a particular installation. If this equipment does cause harmful interference to radio or television reception, which can be determined by turning the equipment off and on, the user is encouraged to try to correct the interference by one or more of the following measures:

- Reorient or relocate the receiving antenna.
- Increase the separation between the equipment and receiver.
- Connect the equipment into an outlet on a circuit different from that to which the receiver is connected.
- Consult the dealer or an experienced radio/TV technician for help.

### WARNING

*You are cautioned that changes or modifications not expressly approved by the party responsible for compliance could void your authority to operate the equipment.*

### IMPORTANT NOTE:

#### Radiation Exposure Statement:

This equipment complies with FCC radiation exposure limits set forth for an uncontrolled environment. End users must follow the specific operating instructions for satisfying RF exposure compliance. To maintain compliance with FCC RF exposure compliance requirements, please follow operation instruction as documented in this manual. This equipment complies with FCC / IC RSS-102 radiation exposure limits set forth for an uncontrolled environment. This equipment should be installed and operated with minimum distance 20cm between the radiator & your body.

#### For Canada

- This Class B digital apparatus complies with Canadian ICES-003.
- Cet appareil numérique de la classe B est conforme à la norme NMB-003 du Canada.

### WEEE Directive



Produced after 13 August 2005. Waste electrical should not be disposed of with household waste. Please recycle where facilities exist. Check with your local authority or retailer for recycling advice.



## 5. Technical specifications

<b>Screen size</b>	10.4" diagonal TFT LCD
<b>Aspect ratio</b>	4:3
<b>Panel resolution</b>	800 (H) x 600 (V) pixels
<b>Internal memory size</b>	512MB
<b>Brightness</b>	300 cd/m <sup>2</sup>
<b>Contrast ratio</b>	500:1
<b>Viewing angle in landscape and portrait positions (Top/Bottom/Left/Right)</b>	50° / 60° / 75° / 75°
<b>Supported memory card types</b>	SD, SDHC, MMC
<b>USB Host</b>	Supported
<b>Loudspeakers</b>	0.5W x 2
<b>Power adapter</b>	<ul style="list-style-type: none"> <li>AC input: 100-240V; 50/60 Hz; 0.6A</li> <li>DC output: 9.0V, 2A</li> </ul>
<b>Supported image file format</b>	JPEG (*.jpg)
<b>Supported audio file format</b>	MP3 (*.mp3)
<b>Auto rotation</b>	Built-in tilt sensor

<b>Wi-Fi module</b>	802.11b/g 2.4GHz WLAN Chipset: Atheros AR2524 MAC/BB + UBEC UW2453 RFIC
<b>Supported web services</b>	Picasa, Flickr, Frame Channel, RSS, WEB Radio, Email

### **NOTE**

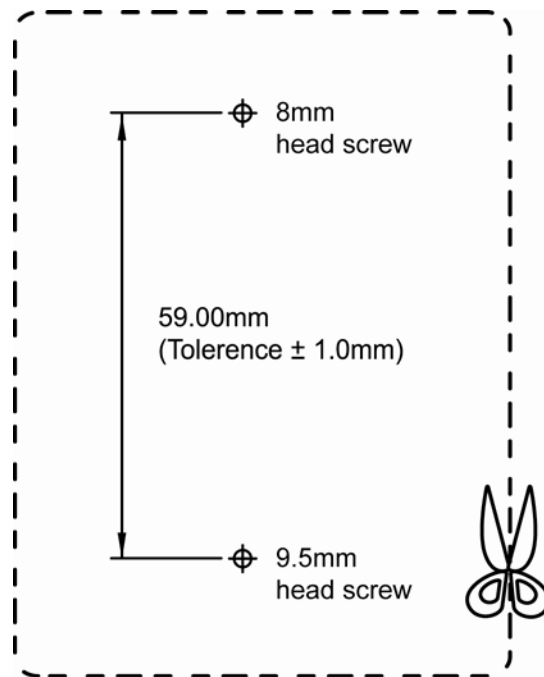
*Specifications are subject to change without prior notice.*



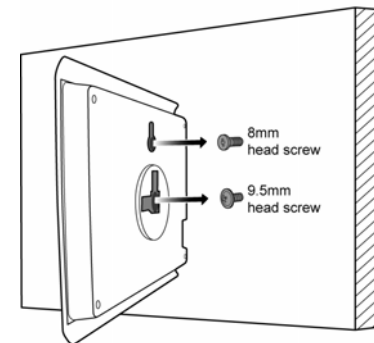
## 6. Appendix

### Landscape wall mounting

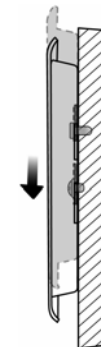
1. Cut the illustration below and drill holes in the wall exactly as illustrated.



2. Insert 8mm and 9.5mm head screws (to be purchased separately) into the holes and tighten the screws. Then, align your photo frame with the screws.



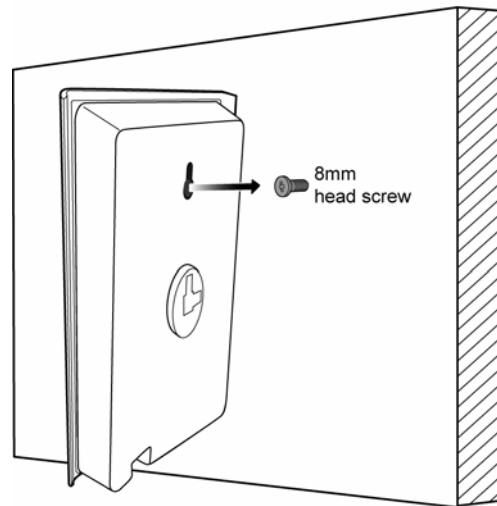
3. Mount your photo frame in landscape position on the wall.



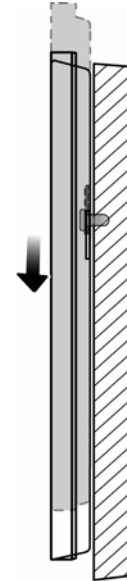


### Portrait wall mounting

1. Drill a hole in the wall and insert an 8mm head screw (to be purchased separately) into the hole.
2. Align your photo frame with the screw.



3. Mount your photo frame in portrait position on the wall.







**MOTOROLA**

Manufactured, distributed or sold by Binatone Electronics International LTD., official licensee for this product.

MOTOROLA and the Stylized M Logo, and other Motorola trademarks and trade dress are owned by Motorola, Inc. and are used under license from Motorola, Inc. MOTOROLA and the Stylized M Logo are registered in the US Patent & Trademark Office. All other product or service names are the property of their respective owners.

© Motorola, Inc. 2009. All rights reserved.



Version 1.0

Printed in China