

TROUBLESHOOTING

Troubleshooting for your Heater

Trouble	Probable Cause	Solution
<ul style="list-style-type: none"> Heater Does Not Turn On. 	<ul style="list-style-type: none"> Manual user reset is activated. Not plugged in properly. Electrical outlet does not hold plug in securely. Thermostat set too low. Obstruction causing the heater not to operate. Circuit breaker trips. 	<ul style="list-style-type: none"> Follow reset instructions listed in this manual. Ensure plug is properly inserted. Make sure electrical outlet and circuit breaker are working. Have outlet replaced by a licensed electrician. Press the Mode Button to select the highest temperature setting. Unplug the heater and remove all obstructions. Position your heater 36 inches away from all objects. Make sure no other high wattage appliances are operating on the same circuit and reset breaker if needed.
<ul style="list-style-type: none"> Not Enough Heat. 	<ul style="list-style-type: none"> Heater is in reduced heat setting. Thermostat set too low. 	<ul style="list-style-type: none"> Change setting to Max Heat. Press the Mode Button to select the highest temperature setting.
<ul style="list-style-type: none"> Heater Cycles ON and OFF Frequently. 	<ul style="list-style-type: none"> The thermostat automatically turns the heater on and off to maintain selected comfort level. Every 5-10 minute the heater turns on and runs for three minutes. 	<ul style="list-style-type: none"> To make this occur less frequently press the Mode Button to select the highest setting. This is normal operation to ensure the heater is maintaining the room temp accurately.

Troubleshooting for your Heater

Trouble	Probable Cause	Solution
<ul style="list-style-type: none"> Fan Speed Doesn't Change. 	<ul style="list-style-type: none"> Heat settings control the heat output of the heater and not the fan speed. Fan runs at the same speed on all settings. 	<ul style="list-style-type: none"> Run heater in Max Heat for maximum heat output.
<ul style="list-style-type: none"> Unexpected Noise. 	<ul style="list-style-type: none"> You may hear a popping or crackling sound as the heater heats up. This is normal and safe operation. Once the heater heats up, the crackling sound will go away. 	<ul style="list-style-type: none"> If the noise persists call Bionaire at 1-800-253-2764.
<ul style="list-style-type: none"> Unexpected Smell. 	<ul style="list-style-type: none"> There may be an odor or vapor coming from the heater the first time you use it or after prolonged or seasonal storage. 	<ul style="list-style-type: none"> This is normal and is the result of dust or other debris accumulating on the heating element. Make sure the heater is in a well ventilated area and continue running until the odor or vapor goes away.

WARRANTY INFORMATION

1 YEAR LIMITED WARRANTY

Sunbeam Products, Inc. doing business as Jarden Consumer Solutions or if in Canada, Sunbeam Corporation (Canada) Limited doing business as Jarden Consumer Solutions (collectively "JCS") warrants that for a period of one year from the date of purchase, this product will be free from defects in material and workmanship. JCS, at its option, will repair or replace this product or any component of the product found to be defective during the warranty period. Replacement will be made with a new or remanufactured product or component. If the product is no longer available, replacement may be made with a similar product of equal or greater value. This is your exclusive warranty. Do NOT attempt to repair or adjust any electrical or mechanical functions on this product. Doing so will void this warranty.

This warranty is valid for the original retail purchaser from the date of initial retail purchase and is not transferable. Keep the original sales receipt. Proof of purchase is required to obtain warranty performance. JCS dealers, service centers, or retail stores selling JCS products do not have the right to alter, modify or any way change the terms and conditions of this warranty.

This warranty does not cover normal wear of parts or damage resulting from any of the following: negligent use or misuse of the product, use on improper voltage or current, use contrary to the operating instructions, disassembly, repair or alteration by anyone other than JCS or an authorized JCS service center. Further, the warranty does not cover: Acts of God, such as fire, flood, hurricanes and tornadoes.

What are the limits on JCS's Liability?

JCS shall not be liable for any incidental or consequential damages caused by the breach of any express, implied or statutory warranty or condition.

Except to the extent prohibited by applicable law, any implied warranty or condition of merchantability or fitness for a particular purpose is limited in duration to the duration of the above warranty.

JCS disclaims all other warranties, conditions or representations, express, implied, statutory or otherwise.

JCS shall not be liable for any damages of any kind resulting from the purchase, use or misuse of, or inability to use the product including incidental, special, consequential or similar damages or loss of profits, or for any breach of contract, fundamental or otherwise, or for any claim brought against purchaser by any other party.

Some provinces, states or jurisdictions do not allow the exclusion or limitation of incidental or consequential damages or limitations on how long an implied warranty lasts, so the above limitations or exclusion may not apply to you.

This warranty gives you specific legal rights, and you may also have other rights that vary from province to province, state to state or jurisdiction to jurisdiction.

How to Obtain Warranty Service

In the U.S.A.

If you have any questions regarding this warranty or would like to obtain warranty service, please call 1-800-253-2764 and a convenient service center address will be provided to you.

In Canada

If you have any questions regarding this warranty or would like to obtain warranty service, please call 1-800-253-2764 and a convenient service center address will be provided to you.

In the U.S.A., this warranty is offered by Sunbeam Products, Inc. doing business as Jarden Consumer Solutions located in Boca Raton, Florida 33431. In Canada, this warranty is offered by Sunbeam Corporation (Canada) Limited doing business as Jarden Consumer Solutions, located at 20 B Hereford Street, Brampton, Ontario L6Y 0M1. If you have any other problem or claim in connection with this product, please write our Consumer Service Department. **PLEASE DO NOT RETURN THIS PRODUCT TO ANY OF THESE ADDRESSES OR TO THE PLACE OF PURCHASE.**

BIONAIRE®

GO ONLINE NOW to

<http://www.bionaire.com/BIACLG201>

to receive a **FREE GIFT OR PROMO CODE***.

It's our "thanks" to you for being a Bionaire® brand customer.

-You will also get access to special sale items & promotions on a full assortment of Bionaire® branded products.

HURRY & SIGN UP TODAY!

**While supplies last; subject to availability.*

BIONAIRE®

pure indoor living



**BIONAIRE®
SILENT WHOLE
ROOM HEATER**

MODEL: BH3950

Instruction Manual

Read instructions before operating. Retain for future reference.

Questions? Comments? Call 1-800-253-2764 in North America.

© 2012 Sunbeam Products, Inc. doing business as Jarden Consumer Solutions. All Rights Reserved. Distributed by Sunbeam Products, Inc. doing business as Jarden Consumer Solutions, Boca Raton, Florida 33431.

156149

BH3950_12EM1

Printed In China
GCDS-BI023783-AB

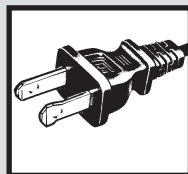
PLEASE READ AND SAVE THESE IMPORTANT SAFETY INSTRUCTIONS

When using electrical appliances, basic safety precautions should always be followed to reduce the risk of fire, electric shock, and injury to persons, including the following:

1. Read all instructions before using this heater.
2. This heater is hot when in use. To avoid burns, do not let bare skin touch hot surfaces. If provided, use handles when moving this heater. Keep combustible materials, such as furniture, pillows, bedding, papers, clothes, and curtains at least 3 feet (0.9 m) from the front of the heater and keep them away from the sides and rear.
3. Extreme caution is necessary when any heater is used by or near children or invalids and whenever the heater is left operating and unattended.
4. Always unplug heater when not in use.
5. Do not operate any heater with a damaged cord or plug or after the heater malfunctions, has been dropped or damaged in any manner. Discard heater, or return to authorized service facility for examination and/or repair.
6. Do not use outdoors.
7. This heater is not intended for use in bathrooms, laundry areas and similar indoor locations. Never locate heater where it may fall into a bathtub or other water container.
8. Do not run cord under carpeting. Do not cover cord with throw rugs, runners, or similar coverings. Do not route cord under furniture or appliances. Arrange cord away from traffic area and where it will not be tripped over.
9. To disconnect heater, turn controls to off, then remove plug from outlet.
10. Do not insert or allow foreign objects to enter any ventilation or exhaust opening as this may cause an electric shock or fire, or damage the heater.

11. To prevent a possible fire, do not block air intakes or exhaust in any manner. Do not use on soft surfaces, like a bed, where openings may become blocked.
 12. A heater has hot and arcing or sparking parts inside. Do not use it in areas where gasoline, paint, or flammable liquids are used or stored.
 13. Use this heater only as described in this manual. Any other use not recommended by the manufacturer may cause fire, electric shock, or injury to persons.
 14. Always plug heaters directly into a wall outlet/receptacle. Never use with an extension cord or relocatable power tap (outlet/power strip).
 15. When unplugging, be sure to pull by the plug and not the cord.
 16. If the heater will not operate, see specific instructions on Auto Safety Shut-off.
 17. DO NOT attempt to repair or adjust any electrical or mechanical functions on this unit. Doing so will void your warranty. The inside of the unit contains no user serviceable parts. All servicing should be performed by qualified personnel only.
 18. Discontinue use if plug or outlet is hot. It is recommended that the outlet be replaced if plug or outlet is hot to touch.
 19. The heater must not be located immediately below a socket-outlet. Do not use this heater in the immediate surroundings of a bath, a shower or a swimming pool.
- NOTE: THIS UNIT IS FOR FLOOR USE ONLY.**

SAVE THESE INSTRUCTIONS



THIS APPLIANCE HAS A POLARIZED PLUG (one blade is wider than the other). To reduce the risk of electric shock, this plug is intended to fit in a polarized outlet only one way. If the plug does not fit fully in the outlet, reverse the plug. If it still does not fit, contact a qualified electrician to install the proper outlet.

DO NOT ATTEMPT TO MODIFY THIS PLUG OR DEFEAT THIS SAFETY FEATURE IN ANY WAY.

FEATURES - OPERATIONS

NOTE:

- There may be an odor coming from the heater the first time you use it. This is normal during the break-in period. Make sure the heater is in a well ventilated area and continue running it until the smell goes away.
- You may hear a popping or crackling sound as the heater heats up. This is normal and safe operation. Once the heater heats up, the crackling sound will go away.

TECHNICAL SPECIFICATIONS

Wattage:
1500W/ (+ 5% - 10%)
Working Voltage:
120V AC/60 HZ

AUTO SAFETY SHUT-OFF

This heater is equipped with a patented, technologically-advanced, safety system that automatically shuts off the current to the heater when a potential overheat temperature is reached. The heater can only resume operation when you reset it.

TO RESET THE HEATER

If your heater shuts down, follow these steps:

1. Turn Power (button A) to OFF (O) and Thermostat to High (fully clockwise).
2. Unplug the heater and wait 30 minutes.
3. Plug in the heater, turn the power ON, and turn the Heat level button (B) to High (II).
4. Your heater should now be operating properly.

TIP-OVER SHUT-OFF

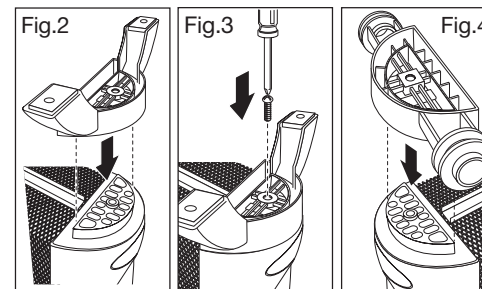
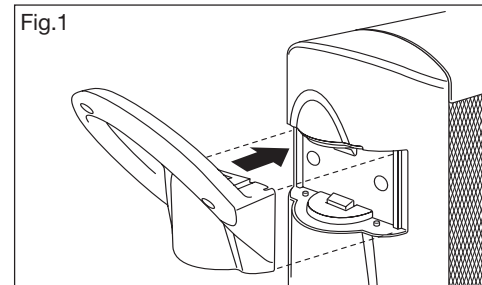
If the heater is knocked over, it will instantly shut off. To resume operation, simply place the heater in an upright position and turn ON the heater.

ASSEMBLY INSTRUCTIONS

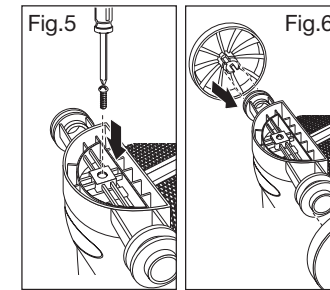
Handle / Wheel / Front Foot Assembly

There are two wheels, one wheel mounting bracket, one front foot, two screws, and a handle packed within the box that you will need to attach to the heater (Please refer to Figs. 1-6). NOTE: Wheel assembly must go on the back and stand assembly must go on the front.

1. Push the handle into the front housing of the heater (as shown in Fig. 1). The handle will snap into place and is not meant to be taken apart after it is attached to the heater.
2. Turn the heater upside down.
3. Place the foot onto the bottom of the FRONT of the heater (same side as control panel and as shown in Fig. 2). Secure the foot with one of the provided screws (as shown in Fig. 3).
4. Place the wheel mounting bracket onto the bottom of the back of the heater (as shown in fig. 4), (same side as the power cord). Secure the wheel mounting bracket with the second screw provided (as shown in Fig. 5).



FEATURES - OPERATIONS



5. Using force, insert the wheel into one of the holes on each side of the mounting bracket (as shown in Fig. 6). They will snap into place and are not meant to be taken apart after assembly.

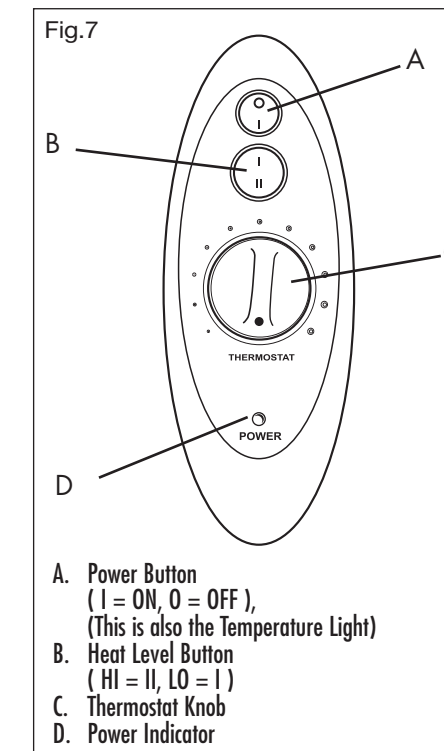
NOTE: This unit should not be operated without the feet properly secured on the bottom of the heater.

PRE-OPERATING INSTRUCTIONS

1. Carefully remove your heater from the box.
2. Make sure the heater is OFF before plugging the heater into the outlet.
3. Place the heater on a firm, level surface.
4. Avoid overloading your circuit by not using other high wattage appliances in the same outlet. At 1500 Watts, this unit draws 12.5 Amps.

OPERATING INSTRUCTIONS

1. Turn Power ON (button A). Depress (I).
2. Turn Thermostat knob (C) fully clockwise.
3. Depress Heat Level button to high (II), and allow the heater to warm up.
4. When the desired comfort level is reached, lower the Thermostat until the heater stops and the temperature light turns off.



- A. Power Button (I = ON, O = OFF), (This is also the Temperature Light)
- B. Heat Level Button (HI = II, LO = I)
- C. Thermostat Knob
- D. Power Indicator

5. The system now maintains the selected comfort level by automatically turning the heater ON and OFF.

NOTE: The Temperature light cycles ON and OFF with the heater element as it maintains the programmed temperature. To prevent the heater from cycling, raise the thermostat setting.

CLEANING / MAINTENANCE

CLEANING/MAINTENANCE

Always unplug the heater before cleaning. And allow to cool.

- Lightly run a vacuum cleaner nozzle over the heater grill to remove any dust or dirt that may have accumulated.
- Carefully wipe the heater with a soft, damp cloth. Please be very cautious near the heating elements.
- NEVER use abrasive or flammable solvents to clean the heater.
- After cleaning, be sure to completely dry the heater with a cloth or towel.
- Store your heater in a cool, dry location.

TROUBLESHOOTING

If your heater fails to operate or if there is no heat:

- Make sure the power button is ON. Depress (I) on button A.
- Check the thermostat setting; it might be set too low. Turn the thermostat knob clockwise until the heater restarts.
- If the unit is still not producing enough heat, make sure the Heat Level button is on the high setting (II is depressed).
- Be patient. Give the heater time to heat up.
- Check for obstructions. If you find an obstruction, turn OFF and UNPLUG the heater. Carefully remove the obstruction and follow the reset instructions.
- Make sure the electrical outlet and circuit breaker are working.

Please DO NOT attempt to open or repair the heater. Please see the Warranty for Service Instructions or call our Consumer Services Department at 1-800-253-2764.

If you have any questions regarding your product or would like to learn more about other Bionaire® products, please contact our Consumer Service Department at 1-800-253-2764 or visit our website at www.bionaire.com.