

Maintenance and Cleaning

Daily Maintenance

When the NESS L300 Plus System is not in use:

1. If appropriate, reapply the covers to the hydrogel electrodes. Do not let the hydrogel dry out.
2. Store the cloth electrodes where they can air dry.
3. Allow the FS Cuffs to air dry.
4. Check each component for wear or damage.
5. Replace any components or electrodes that appear old, worn, or damaged.
6. Fully charge the L300 Plus Control Unit, Thigh RF Stim Unit, and L300 RF Stim Unit batteries.

Charging the Batteries

When a NESS L300 Plus System component has a low battery, the L300 Plus Control Unit will beep and the component indicator light will FLASH YELLOW. See Figure 9-1.

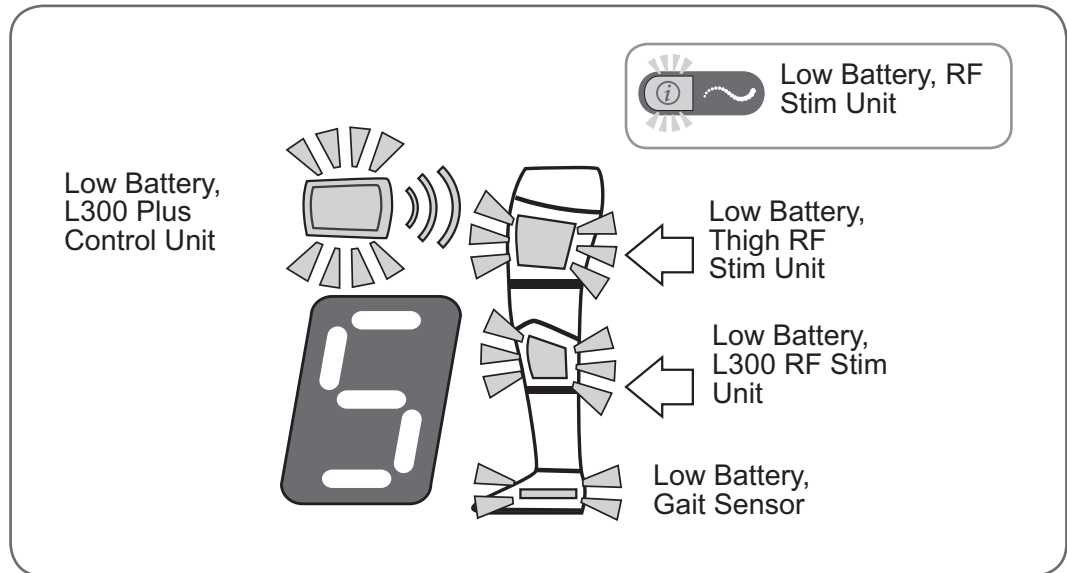


Figure 9-1: Low battery FLASHING YELLOW indicators.

When an RF Stim Unit battery charge level is low, the RF Stim Unit status light will also FLASH YELLOW. See inset in Figure 9-1.

When the Intelli-Sense Gait Sensor battery charge level is low, the L300 Plus Control Unit low-battery audio alert will become more persistent as the battery weakens.

To charge the batteries in the L300 Plus Control Unit, L300 RF Stim Unit, and Thigh RF Stim Unit:

1. Select an appropriate blade. See Figure 9-2. Then slide the blade into the charger.

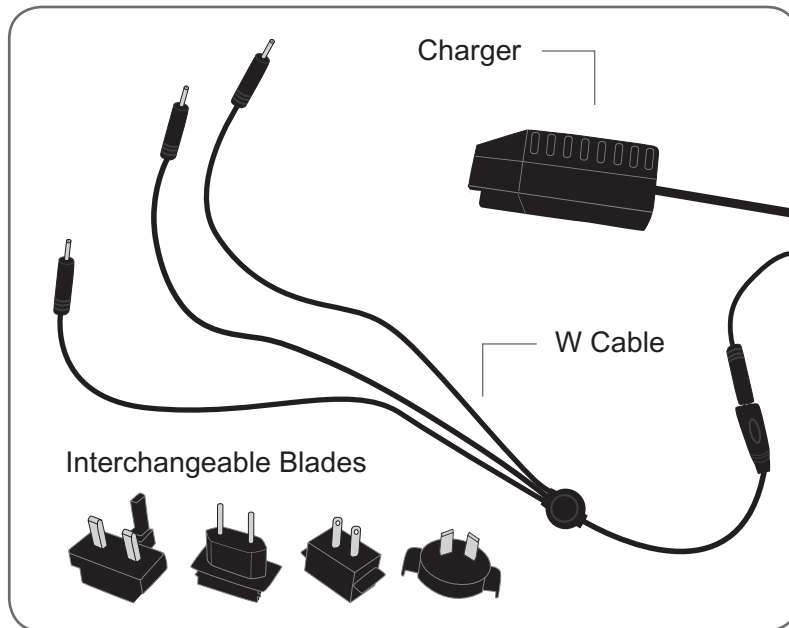


Figure 9-2: System charger set.



WARNING: Use only the charger included in your NESS L300 Plus System Kit or NESS L300 Plus System Upgrade Kit. Use of any other charger could damage the system.

2. Open the flexible covers over the charging ports. See Figure 9-3.

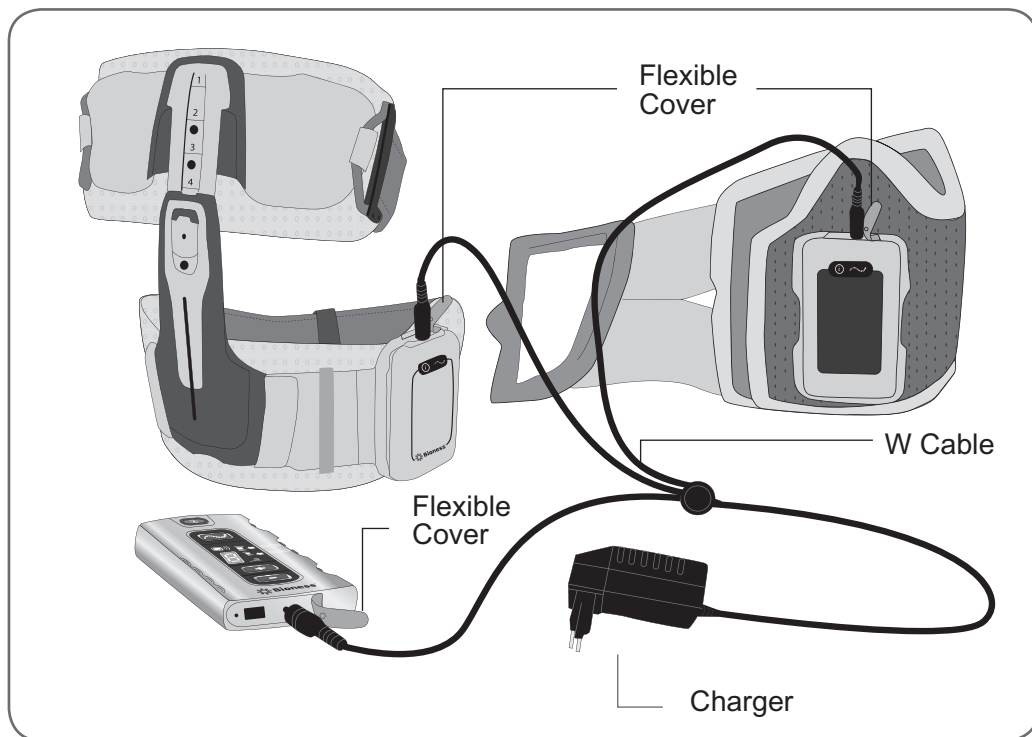






Figure 9-3: Charging setup.

3. Connect the W cable to the charging ports. See Figure 9-3
4. Plug the charger into a wall socket.
5. Verify that the  rotating GREEN circle appears in the L300 Plus Control Unit digital display. See Table 9-1.
6. Verify that the  status light on both RF Stim Units is ALTERNATELY FLASHING YELLOW and GREEN. See Table 9-2.

7. Allow the charging process to continue until:

- A  horizontal GREEN line appears in the L300 Plus Control Unit digital display. See Table 9-1.
- The  status light on both RF Stim Units is solid GREEN. See Table 9-2.

The charging process should last approximately three hours, but the L300 Plus Control Unit can take up to six hours to charge.

Note: Keep the L300 Plus Control Unit and RF Stim Units connected to the system charger set until ready for use.




Display	Description	Definition
	ROTATING GREEN Circle	L300 Plus Control Unit Charging
	Horizontal GREEN Line	L300 Plus Control Unit Fully Charged
	Letter "E" FLASHES while Charging	Charging Error

Table 9-1: L300 Plus Control Unit charging displays and definitions.

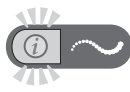

	Status Light ALTERNATELY FLASHES YELLOW and GREEN	Battery Charging
	Status Light SOLID GREEN	Battery Fully Charged

Table 9-2: RF Stim Unit charging displays and definitions.

Note: If the L300 Plus Control Unit battery is completely discharged, a “b” (for boot) will flash for a few seconds in the L300 Plus Control Unit digital display when charging is started.

Note: It is possible to charge the L300 Plus Control Unit and RF Stim Units separately, but Bioness recommends that they be charged at the same time.



CAUTION: The batteries must be charged before first use, daily, and after extended storage.



CAUTION: The Intelli-Sense Gait Sensor battery is not rechargeable.



CAUTION: Remove the L300 FS Cuff and Thigh FS Cuff before charging the RF Stim Unit batteries.



CAUTION: Do not use the RF Stim Units or the L300 Plus Control Unit while charging.

Battery Replacement

The battery in the Intelli-Sense Gait Sensor is not rechargeable. It may need to be replaced approximately every six months.

When the Intelli-Sense Gait Sensor battery charge level is low, the indicator on the L300 Plus Control Unit will begin to FLASH YELLOW. The alert will begin approximately two weeks before the Intelli-Sense Gait Sensor completely loses its charge. The L300 Plus Control Unit will also emit an audio alert.

To replace the Intelli-Sense Gait Sensor battery (Lithium coin cell, CR2430):

1. Using a Phillips screwdriver, unscrew the two screws from the battery cover. See Figure 9-4.

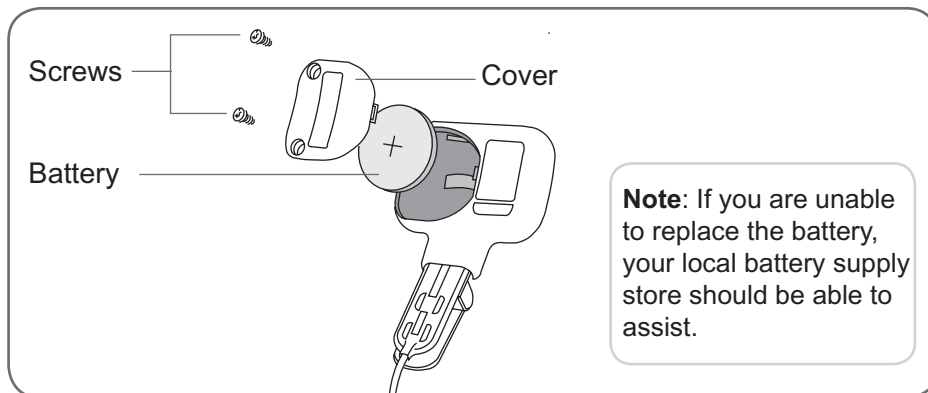


Figure 9-4: Replacing the Intelli-Sense Gait Sensor battery.

2. Slide the cover out.
3. Note the “+” orientation of the old battery.



Remove the old battery, and properly dispose of it according to your local environmental regulations.

4. Insert the new battery. The “+” should face outward.
5. Slide the cover back into place.
6. Tighten the screws.
7. Press the pressure sensor to activate the sensor.



CAUTION: Use only a battery supplied by Bioness.

The battery in the L300 Plus Control Unit is a rechargeable AAA NiMH battery. It should be replaced approximately every two years.

To replace the L300 Plus Control Unit battery (AAA NiMH 1.2 V):

1. Remove the screw from the battery cover on the back of the L300 Plus Control Unit. See Figure 9-5. (The screw is under a small label. Gently peel off the end of the label. Reapply the label after the battery is replaced.)
2. Remove the battery cover.
3. Note the "+/-" orientation of the old battery.

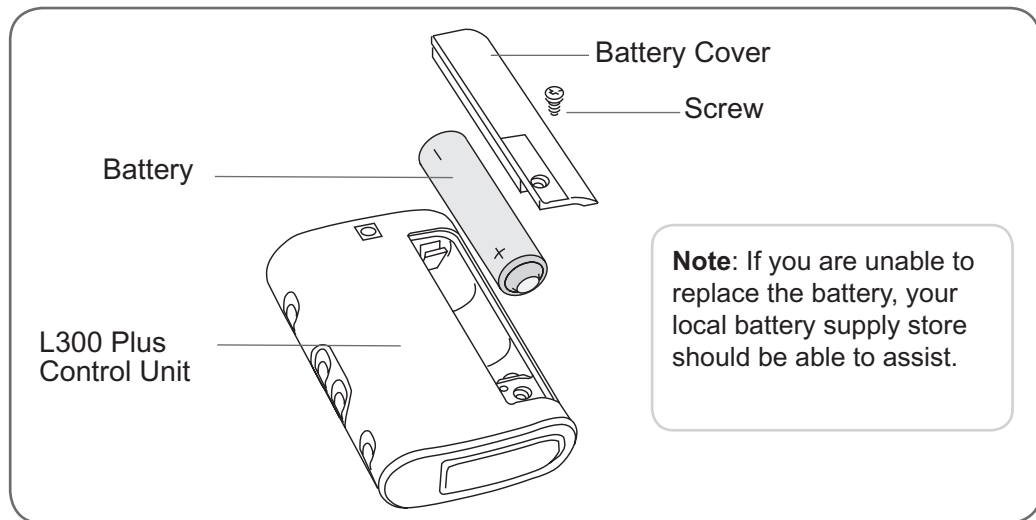


Figure 9-5: Replacing the L300 Plus Control Unit battery.

4. Insert the new rechargeable battery in the proper "+/-" orientation.
5. Slide the cover into place.



Remove the old battery, and properly dispose of it according to your local environmental regulations.

6. Tighten the screw.
7. Fully charge the new battery before use.



CAUTION: Use of a non-rechargeable AAA battery can damage the L300 Plus Control Unit.



CAUTION: Use only a battery supplied by Bioness.

The RF Stim Units have a rechargeable battery that can only be replaced by a Bioness authorized representative. If the battery needs to be replaced, contact the **Bioness Client Relations Department at (800) 211-9136, Option 3.**