

EUT:VGA CARD

FCC ID:I27MM-VL01A

BIOSTAR GROUP

USER'S MANUAL

FEDERAL COMMUNICATIONS COMMISSION

This device complies with Part 15 of the FCC Rules. Operation is subject to the following two conditions: (1) this device may not cause harmful interference, and (2) this device must accept any interference received, including interference that may cause undesired operation.

NOTE

This equipment has been tested and found to comply with the limits for a Class B digital device, pursuant to Part 15 of the FCC Rules. These limits are designed to provide reasonable protection. This equipment generates, uses and can radiate radio frequency energy and, if not installed and used in accordance with the instructions, may cause harmful interference to radio communications. However, there is no guarantee that interference will not occur in a particular installation. If this equipment does cause harmful interference to radio or television reception, which can be determined by turning the equipment off and on, the user is encouraged to try to correct the interference by one or more of the following measures:

- Reorient or relocate the receiving antenna.
- Increase the separation between the equipment and receiver.
- Connect the equipment into an outlet on a circuit different from that to which the receiver is connected.
- Consult the dealer or an experienced radio/TV technician for help.

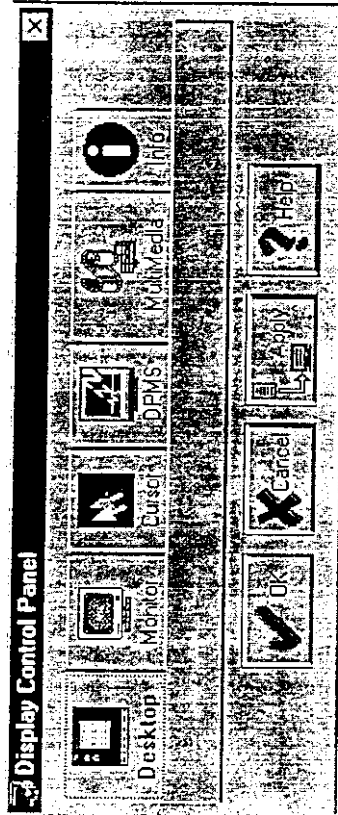
Shielded interface cables must be used in order to comply with emission limits.

Changes or modifications not expressly approved by the party responsible for compliance could void the user's authority to operate the equipment.

Chapter 0: Quick Installation for Win95 and Win98 (for advanced user)

About StarMedia:

The StarMedia Display Utility is an integrated set of utilities which you can use to configure and adjust your graphics display card for optimal usage under Microsoft Windows 95, Windows for Workgroup and Windows 98. The StarMedia features monitor Plug & Play support, on-the-fly resolution switching, on-the-fly refresh rate changing, monitor centering, custom cursor color, multi media playback programs and support localized language.



Desktop: Configures the desktop size, color-depth, font size and refresh rates. You can change the desktop settings without restarting Windows.

Monitor: Detects your monitor and displays the resolutions and refresh rates which your monitor supports. The monitor centering facility let you adjust the screen position.

Cursor: Lets you choose your favorite cursor color.

DPMS: Configures your monitor for power-saving purpose.

Multimedia: Lets you launch the CD player, Media player and Active Movie programs.

Info: Displays the desktop settings, BIOS and driver version and the memory installed on your VGA card.

For detail information about StarMedia, please refer to chapter 2.

Installation for Win95 & Win98:

Launch Windows, insert CD into CD-ROM drive, run MSSETUP.EXE and then click the Windows 95 or Windows 98 button, if you install from diskette, insert the "Windows 95 & Windows 98" diskette into drive A (or B), run A:\SETUP or B:\SETUP. The SETUP program will detect the Windows version, language, and copy the driver and StarMedia utility into your system. For detail installation information, please refer to chapter 3.

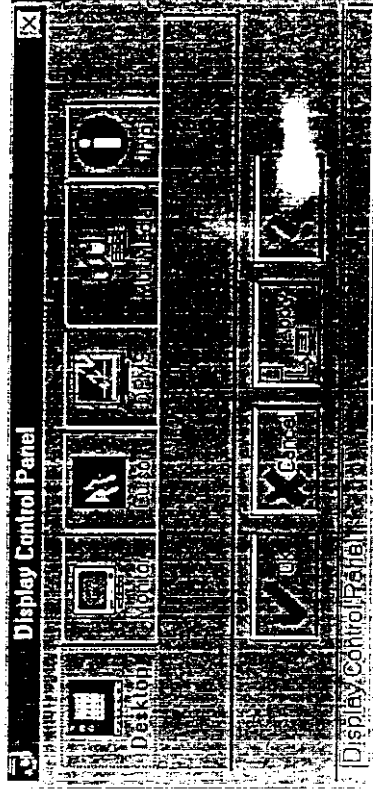
How to Launch StarMedia

After install the drivers for Windows 95 and 98 and restarting the Windows, a icon will display at the bottom of your screen. **Left Click(on Windows 95)** or **Right Click(on Windows 98)** this icon, and then select the 'Display Control Panel' menu item, or double click the 'Display Control Panel' icon on the new installed program group, the 'Display Control Panel' program will be opened.

Chapter 1: StarMedia Display Utility

StarMedia Introduction

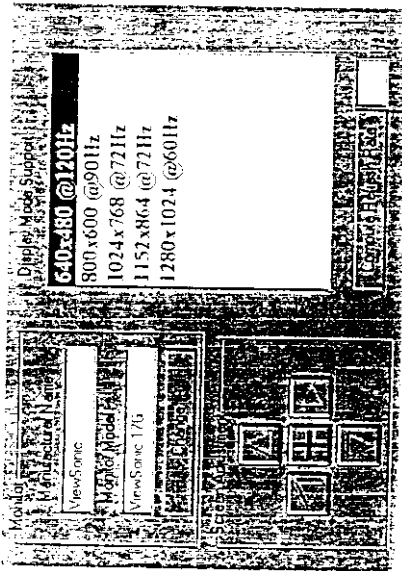
The StarMedia Display Utility, is an integrated set of utilities which you can use to configure and adjust your graphics display card for optimal usage under Microsoft Windows 95, Windows for Workgroup and Windows 98. The StarMedia features monitor Plug & Play support, on-the-fly resolution switching, on-the-fly refresh rate changing, monitor centering, custom cursor color and a variety of other productivity enhancing features.



StarMedia Operational Guide

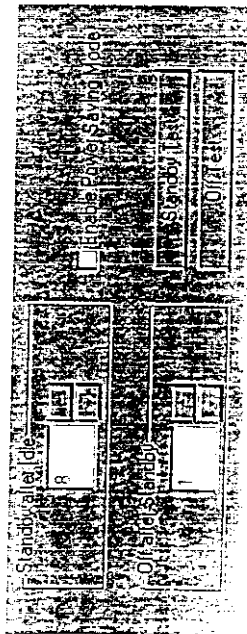
Desktop

The Desktop dialog (for a SiS 6326 VGA card installed on Windows 95 platform, if a different card is installed, e.g. an ET6000 card, then the window will be displayed as ET6000 Setup, but the contents on the window are almost the same.) allows you to configure your desktop size, color depth, font size and refresh rate.



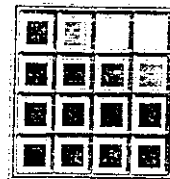
DPMS

The DPMS group shows the current power management settings. Inactivity time-out values are shown for Standby and Off. Display Power management services work in conjunction with EPA Energy Star compliant monitors. The DPMS screen allows you to enable, configure and test these services.



Cursor

The Cursor dialog allows you to change the cursor color. There are 16 cursor colors you can choose.



Multimedia

The Multimedia page shows 3 buttons which will launch Microsoft(TM) CD player, Media player and Active Movie respectively. Sometimes some of the buttons will be grayed when the specific program(s) is not installed on your computer.

CD Player:

CD music playback.

This control lets you play audio compact disc.

It has functions such as playing a CD, pausing and resuming a CD, playing tracks in random order & playing multiple discs.

Media Player:

Video and audio files playback.

This control lets you play audio, video and animation files. It has functions such as playing a multimedia file, rewinding & fast-forwarding a multimedia file.

Active Movie:

Movie and video and audio files playback. This control lets you play a MPEG file, a video CD(DAT file) and Quick Time(QT file) and movie file(MOV file).

