

**Earn BISSELL Rewards!**

Register your product today!

See details on Back page

 **LIFT-Off<sup>®</sup>**  
**MULTI CYCLONIC**  
**pet**

**USER'S GUIDE**  
**89Q9/18Z6 SERIES**

- 2** Thank You
- 3** Safety instructions
- 4** Product view
- 5** Assembly
- 6-9** Operations
- 10-15** Maintenance and care
- 16-17** Troubleshooting
- 17** Replacement parts
- 18** Accessories
- 19** Warranty
- 20** Product registration
- 20** Consumer services



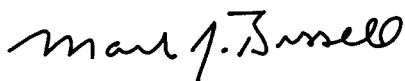
# Thanks for buying a BISSELL Lift-Off® Multi Cyclonic Vacuum

We're glad you purchased a BISSELL vacuum. Everything we know about floor care went into the design and construction of this complete, high-tech home cleaning system.

Your BISSELL vacuum is well made, and we back it with a limited three year warranty. We also stand behind it with a knowledgeable, dedicated Consumer Services department, so, should you ever have a problem, you'll receive fast, considerate assistance.

My great-grandfather invented the floor sweeper in 1876. Today, BISSELL is a global leader in the design, manufacture, and service of high quality homecare products like your BISSELL upright vacuum.

Thanks again, from all of us at BISSELL.



Mark J. Bissell  
Chairman & CEO

## DETACHABLE INNOVATION

### Complete Line of BISSELL Lift-Off® Products



Lift-Off®  
Steam Mop



Lift-Off®  
Deep Cleaner



Lift-Off®  
Multi Cyclonic  
Vacuum



Lift-Off®  
Floors & More  
Cordless Stick Vacuum

For more information visit [www.bissell.com](http://www.bissell.com)

# IMPORTANT SAFETY INSTRUCTIONS

When using an electrical appliance, basic precautions should be observed, including the following:

## READ ALL INSTRUCTIONS BEFORE USING YOUR UPRIGHT VACUUM.

Always connect to a polarized outlet (left slot is wider than right). Unplug from outlet when not in use and before conducting maintenance.

### **WARNING: To reduce the risk of fire, electric shock, or injury:**

- Do not modify the polarized plug to fit a non-polarized outlet or extension cord.
- Do not leave vacuum cleaner unattended when it is plugged in.
- Unplug from outlet when not in use and before servicing.
- Unplug before attaching the TurboBrush.
- Do not use outdoors or on wet surfaces.
- Do not allow children to operate vacuum cleaner or use as a toy.
- Close attention is necessary when used by or near children.
- Do not use for any purpose other than described in this user's guide.
- Use only manufacturer's recommended attachments.
- Do not use with damaged cord or plug.
- If appliance is not working as it should, has been dropped, damaged, left outdoors, or dropped into water, have it repaired at an authorized service center.
- Do not pull or carry by cord, use cord as a handle, close a door on cord, or pull cord around sharp edges or corners. Do not run appliance over cord. Keep cord away from heated surfaces.
- Do not unplug by pulling on cord. To unplug, grasp the plug, not the cord.
- Do not handle vacuum cleaner or plug with wet hands.
- Do not put any object into openings. Do not use with any opening blocked; keep openings free of dust, lint, hair, and anything that may reduce air flow.

- Keep hair, loose clothing, fingers, and all parts of body away from openings and moving parts.
- Turn off all controls before plugging or unplugging vacuum cleaner.
- Use extra care when cleaning stairs.
- Do not pick up flammable materials (lighter fluid, gasoline, kerosene, etc.) or use in the presence of explosive liquids or vapors.
- Do not pick up toxic material (chlorine bleach, ammonia, drain cleaner, etc.).
- Do not use vacuum cleaner in an enclosed space filled with vapors given off by oil base paint, paint thinner, some moth proofing substances, flammable dust, or other explosive or toxic vapors.
- Do not pick up hard or sharp objects such as glass, nails, screws, coins, etc.
- Do not pick up anything that is burning or smoking, such as cigarettes, matches, or hot ashes.
- Do not use without filters in place.
- Use only on dry, indoor surfaces.
- Keep appliance on a level surface.
- Do not carry the vacuum cleaner while it is running.

## SAVE THESE INSTRUCTIONS FOR FUTURE USE

## THIS APPLIANCE HAS A POLARIZED PLUG.

To reduce the risk of electric shock, this appliance has a polarized plug (one blade is wider than the other). This plug will fit in a polarized outlet only one way. If the plug does not fit fully in the outlet, reverse the plug. If it still does not fit, contact a qualified electrician to install a proper outlet. Do not change the plug in any way.

This model is for household use only.

## Product view



### **WARNING:**

Do not plug in your vacuum cleaner until you are familiar with all instructions and operating procedures.

Febreze® and related trademarks are owned by The Procter & Gamble Company, Cincinnati, Ohio and used under license by BISSELL, Inc.

## Assembly

The only tool you'll need to assemble your vacuum cleaner is a Phillips head screwdriver.

### Attach handle to vacuum

1. Locate the vacuum handle and remove the screw packet taped to the base of the handle.
2. Stand the vacuum upright and slide the base of the handle firmly into the grooves at the top of the vacuum body.
3. Check to be sure the handle is fitted to the vacuum body. If there is a gap in front, continue to push firmly until the handle is flush.
4. Insert the two screws from the screw packet into the existing holes. Tighten securely with a screwdriver.

### Attach vacuum hose and tools

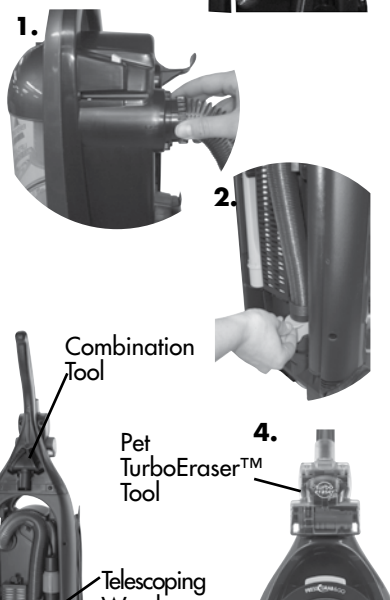
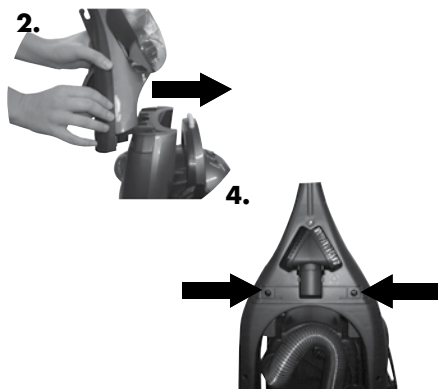
1. Line up the tabs on the base of the Twist n' Snap hose with corresponding notches.
2. Slide the end of the hose grip onto the hose grip base. Place the hose into the hose clip.

**NOTE: The powerfoot will not operate effectively unless the hose is firmly attached to the base.**

3. Snap the telescoping extension wand, crevice tool, and combination tool into storage clips as shown.
4. The Pet TurboEraser Tool snaps on to the holder on the front of the handle. Place the Pet TurboEraser Tool in the holder by hooking the bottom onto the tab and pushing the top of the Pet TurboEraser Tool into place.

## **WARNING:**

Plastic film can be dangerous. To avoid danger of suffocation, keep away from babies and children.



Crevice Tool

Pet TurboEraser™ Tool

Telescoping Wand

# Operations

## Power switch/brush switch

The power switch is located just below the handle on the front of the detachable canister. Push the rocker switch "ON" (I) to vacuum, and "OFF" (O) when cleaning is complete.

The brush switch is located just below the handle on the front of the detachable canister next to the power switch. This switch turns the rotating brush on and off. The brush switch should be in the "ON" (I) position for normal carpet cleaning. It is recommended to turn the brush switch "OFF" (O) for bare floor cleaning or other delicate surfaces.

**Note:** Your BISSELL Lift-Off Multi Cyclonic Pet vacuum is equipped with a special internal switch that turns the rotating brush off whenever the unit is in the Upright position.

## Handle position

- 1. Upright-** For storage and above floor cleaning with special tools.
- 2. Normal Cleaning-** Press handle release pedal once. Use for most household floor cleaning tasks.

## Height adjustment

There are seven height settings available for various floor surfaces. Turn the dial on the foot of the cleaner to the desired setting.

**Lowest setting** – for low pile carpet or bare floors. To pick up debris it may be necessary to move up one setting.

**Medium settings** – for medium pile carpet.

**High setting** – for high pile and most shag/frieze carpet.

**Note:** For optimal carpet cleaning performance, adjust to the lowest practical setting. If your cleaner is difficult to push, adjust to the next higher setting.

If the dial is difficult to turn, tilt the cleaner back slightly to take the weight off of the foot while turning.

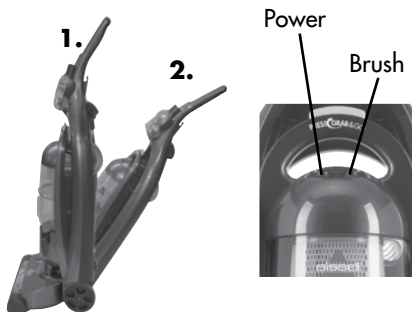


## **CAUTION:**

Before using your vacuum, make sure that the dirt container is in locked position and that all filters (pre-motor and post-motor) are in place. Do not operate your vacuum without these filters.

## *Tip:*

Your vacuum features a quick-release cord wrap. To remove the power cord quickly and easily, rotate the upper cord wrap towards floor, and slip power cord off from upper cord wrap.



## **ATTENTION:**

Some frieze carpets have long delicate fibers or threads that may be damaged by the rotating brush during vacuuming. It is recommended the rotating brush be turned OFF when cleaning this type of carpet.

## *Tip:*

Before cleaning under low furniture, check area first for objects that might harm the unit or block the vacuum hose.



# Operations

## Special tools

Your vacuum is not only a powerful floor vacuum cleaner, it's also a versatile stairs and above floor vacuum when you select one of the special tools.

**Note: The tools can be used with the vacuum in the upright position or with the removable canister.**

1. Remove the vacuum hose by grasping the hose grip and lifting to separate from the hose grip base.
2. Attach tools by firmly pushing onto vacuum hose or telescoping extension wand.

### a. Combination dusting brush/upholstery tool:

Two types of cleaning tools are included in one attachment. Rotate for desired tool.

- Use brush side to dust furniture, blinds, books, lamps, shelves, and baseboards.
- Use upholstery side for curtains, draperies, cushions, fabrics.

### b. Crevice tool:

Use in tight narrow spaces.

### c. Telescoping extension wand:

Use with desired attachment for a longer reach. To extend the wand, twist the collar to "Unlock" position and push away from you. Twist the collar to the "Lock" position to lock into place. To retract, twist to unlock, pull toward you and twist to relock.

### d. Pet TurboEraser Tool:

Use for removing dirt and pet hair from stairs, upholstery, area rugs, and other small areas. Pull towards you in a raking motion.

**Note: The Pet TurboEraser Tool is designed to remove pet hair from upholstered or carpeted surfaces. It should not be used on pets.**

### e. Stair cleaning tool (select models only):

Use for stairs, area rugs, and other small carpeted areas. This tool can also be used for bare floors.

**Note: The stair cleaning tool does not store on board.**



## CAUTION:

Always place vacuum cleaner on floor in its fully upright position and make sure it is locked into place before removing canister or when using tools. Placing the vacuum in its full upright position automatically stops the rotating brush.



## NOTICE:

While vacuuming, certain carpets and low humidity conditions may generate small static discharges. The discharges are entirely harmless and are not associated in any way with the main power supply.

# Operations

## **Special tools continued**

### **f. Deluxe bare floor tool (select models):**

Use for bare floors. Swivel head turns to get into tight spaces and fits under cabinets.

**Note: The deluxe bare floor tool does not store on board.**

**All items may not be included with your model. More tools may be available; to order please refer to page 18.**

### **g. Shoulder Strap (select models only):**

**The Shoulder Strap may be used while cleaning with the Removable Canister.**

1. To attach the shoulder strap, wrap the ends attached to the bottom of the strap securely around the canister handle as shown. To obtain maximum strength, overlap the loose ends completely and press securely in place.
2. The plastic buckle must be positioned on top of the canister handle.
3. The length of the strap may be adjusted as required for comfort.

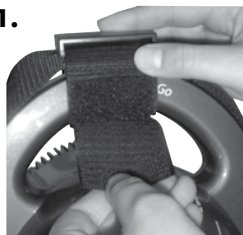
### **h. Pet Contour Tool® (select models only):**

Use to reach into corners and edges on stairs as well as armrests and other curved surfaces. The tool can be flipped to use in any direction.

f.

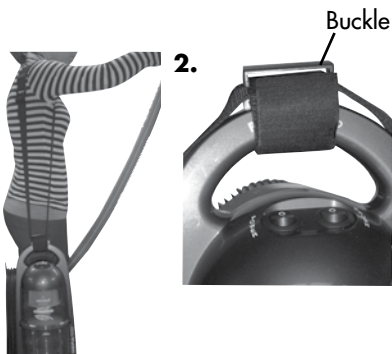


1.



## **CAUTION:**

To reduce the risk of the shoulder strap coming loose in operation follow these instructions.



h.



## **CAUTION:**

To do not press the release button while using the carrying handle to transport the vacuum cleaner. The canister could detach causing the rest of the vacuum to fall.



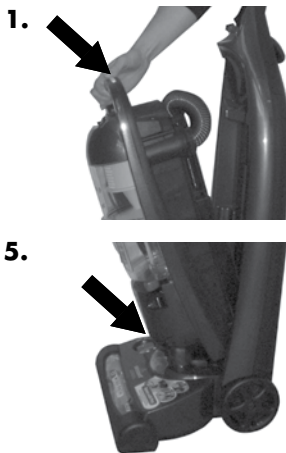
# Operations

## Cleaning with the Removable canister

The removable canister feature makes it possible to easily take the powerful cleaning action of your BISSELL Lift-Off Multi Cyclonic Pet to stairways and other hard-to-reach areas of your home.

Before removing the canister, your vacuum must be in its fully upright position. You do not need to turn off the power first.

1. Press the release button at the top of the canister handle and lift the canister to remove.
2. Remove the vacuum hose from the hose grip base at the back of the canister.
3. Attach the desired tool(s) to the hose grip at the end of the vacuum hose.
4. When you're done, remove the tool(s) and reconnect the hose to the hose grip base.
5. Return the canister to the powerfoot by aligning the "feet" on the front with the bumps on the foot of the upright vacuum. Push the canister toward the vacuum frame until it "clicks" into place.



## Power cord storage

When you are done using your vacuum, return it to the upright position and store the power cord.

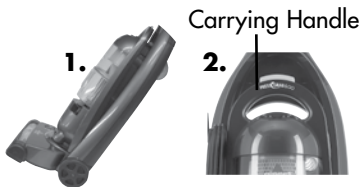
1. Turn vacuum cleaner off (O).
2. Unplug power cord by grasping the polarized plug (NOT the cord) and disconnect from outlet.
3. Loop power cord around cord wraps on side of the canister.
4. Clip molded plug to power cord to secure.

## Transporting Cleaner

1. To move your vacuum cleaner from room to room, put the handle in the upright position, tilt the cleaner back on its rear wheels and push forward.
2. The cleaner can also be moved by using the carrying handle on the removable canister.

**⚠ CAUTION:**

While the vacuum is in use, warm air is emitted through the post-motor filter on the back of the canister. The bottom of the canister may also become warm. When using the shoulder strap, to avoid discomfort, position the canister so that these parts are not directed towards or touching your body.



# Maintenance and care

**To maintain maximum cleaning performance, the following maintenance steps must be performed:**

1. Empty the dirt container when the dirt reaches the "Full" line.
2. Check the pre-motor filter at least once a month and clean and replace as needed.
3. Check and replace the post-motor filter as needed.

**NOTE: More frequent filter cleaning may be necessary if you are vacuuming new carpet, fine dust or have allergy concerns.**

**Follow the instructions on the following pages to perform these simple maintenance steps.**

## Empty Dirt Container

**The dirt container needs to be emptied when the dirt reaches the "Full" line on the front of the container.**

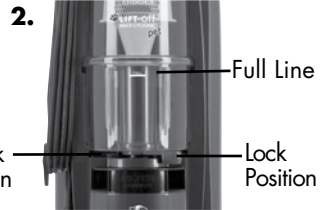
1. Unplug cleaner from electrical outlet.
2. Slide the Lock 'n Seal lever to the "Unlock" position.
3. Grasp handle and pull the dirt container straight out to remove from vacuum.
4. Empty dirt into garbage container.
5. Put the dirt container back in the vacuum and slide the lever to the "Lock" position.

**The dirt container may be washed in warm water with a mild detergent. Make sure it is completely dry before replacing.**

**NOTE: Emptying the dirt container after every use will help prevent over filling and ensure that the vacuum is ready to go the next time you clean.**

## **WARNING:**

To reduce the risk of electric shock, turn power switch OFF and disconnect polarized plug from electrical outlet before performing maintenance or troubleshooting checks.

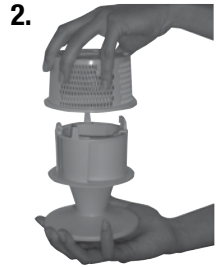


# Maintenance and care

## Cleaning the secondary cyclone

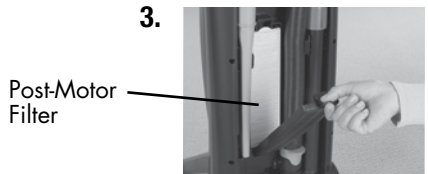
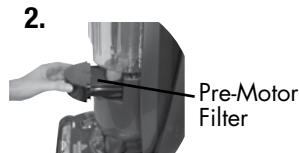
Unplug the cleaner from electrical outlet.

1. The secondary cyclone can be reached by removing the dirt container, reaching underneath the upper tank and turning the rim of the frame to unlock. Pull straight down to remove.
2. The cyclone and screen may be separated for cleaning. Simply pull up on the screen to separate.
3. The upper tank may also be wiped clean with a damp cloth.



## Cleaning the pre-motor and post-motor filters

1. Unplug the vacuum from electrical outlet.
2. The pre-motor filter protects the motor from dirt particles. It is located in the slide out tray underneath the dirt container. If the filter becomes dirty, pull out the tray, lift out the filter and clean. This filter may be hand washed in cold water with mild detergent. Rinse well and air dry thoroughly before replacing.
3. The post-motor filter assists in the filtration process to return clean air to the room. It is located behind the door on the back of the cleaner. If the filter becomes dirty, open the door, remove the filter and replace.



**NOTE: The post-motor filter is a white, pleated filter. This filter is not washable and must be replaced when it becomes dirty.**

### *Tip:*

Select models include a Febreze® post-motor filter. This Febreze® filter is compatible with all BISSELL Lift-Off MultiCyclonic vacuums. For ordering information, please refer to the Replacement parts information on page 17.

**⚠ WARNING:**  
Do not operate cleaner with damp or wet filters or without all filters in place.

# Maintenance and care

## Rotating brush and drive belt maintenance

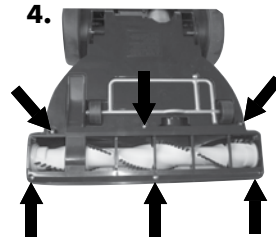
**Check your vacuum cleaner's rotating floor brush and drive belt regularly for debris, wear or damage. Debris can wrap around the brush and hamper its ability to effectively clean your carpet.**

1. Unplug cleaner from electrical outlet.
2. Remove detachable canister from vacuum cleaner
3. Recline handle and turn vacuum cleaner over so bottom side is up.
4. Remove the six screws as shown with a Phillips head screwdriver. Lift the brush cover off.
5. Lift the rotating floor brush to remove. Clean strings, hair and other debris from the brush, paying special attention to the brush ends.
6. Check air passageway for obstructions. Remove any debris from this area.
7. Clean debris from the motor pulley and drive belt areas.
8. Check drive belt carefully for wear, cuts or stressed areas. If any damage is present, discard old drive belt and replace.



### CAUTION:

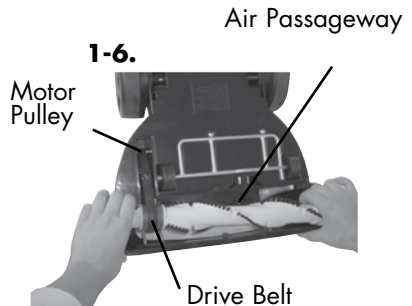
To reduce the risk of injury from moving parts, turn off vacuum cleaner and disconnect power plug from electrical outlet.



## Replace drive belt

1. Unplug the vacuum from electrical outlet.
2. With rotating floor brush removed from vacuum cleaner (Steps 1-8 of check rotating floor brush and drive belt), grasp old drive belt and remove from motor pulley. Discard the old drive belt.
3. Place new drive belt over motor pulley and loop other end over rotating floor brush in the space between the bristles.

**NOTE: It is important that you use only genuine BISSELL replacement belts. Generic belts may not meet the exacting specifications required to keep your vacuum operating at its peak performance. The use of unbranded belts could lead to early failure of the vacuum and could void your warranty.**



# Maintenance and care

## **Replace drive belt continued**

4. Pull the rotating floor brush firmly into position, stretching the drive belt, and place ends of rotating floor brush down into the slots on sides as shown. Alignment of brush ends in slots is necessary to fully insert the brush.
5. Turn rotating floor brush by hand several times in the direction of motor pulley. If properly installed, drive belt will center itself on rotating brush crown.
6. Reposition brush cover and screw back into place.

## **Replace light bulb**

1. Unplug cleaner from electrical outlet.
2. Remove detachable canister and recline handle of vacuum.
3. Using a screwdriver, remove the one screw as shown and lift off the lens.
4. Remove the bulb from the socket by grasping bulb and pulling straight out. Install the new bulb by pushing it gently into the socket until the bulb snaps into place.
5. Reposition lens and secure with the one screw.

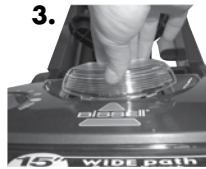
## **Maintaining Pet TurboEraser™ Tool**

**The Pet TurboEraser should be checked regularly for clogs or debris wrapping around the brush.**

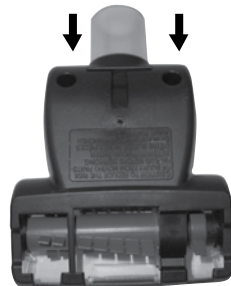
1. Unplug the vacuum from electrical outlet.
2. If a clog is present or debris is visible, unscrew the two screws on the back of the Pet TurboEraser to remove the faceplate and clear any obstructions.
3. To clean debris from the brush, remove the brush from the drive belt and clean debris.
4. Reposition the drive belt on the brush. Place ends of brush in slots on sides. Reposition faceplate and secure with two screws.

### **⚠ WARNING:**

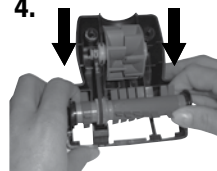
To reduce the risk of electric shock, turn power switch OFF and disconnect polarized plug from electrical outlet before performing maintenance or troubleshooting checks.



2.



4.



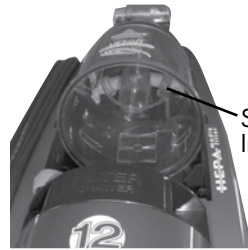
# Maintenance and care

## Cleaning clogs

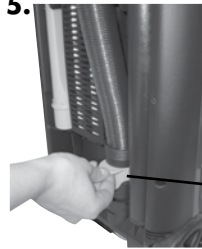
**Low suction or poor pickup may be due to a clog in the vacuum cleaner. If you notice a change in the sound of the motor or a reduction in the spinning action, check for clogs.**

1. Unplug cleaner from electrical outlet.
2. Empty dirt container.
3. Check upper tank for build up or clogs.
4. Remove the secondary cyclone and check the suction inlet for a clog.
5. Grasp the hose grip and lift to separate from the suction opening. Check for a clog in the base or the hose.
6. Release the Twist n' Snap hose from the vacuum by turning to the left. Straighten the hose and unclog with a long, narrow object such as a broomstick.
7. If the low suction persists, follow the instructions for checking the rotating brush on page 12 and inspect the air passageway for obstructions.

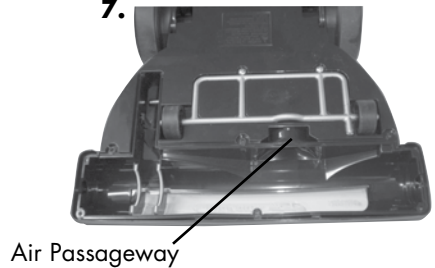
4.



5.



7.



# Maintenance and care

## Thermal protector

**An internal thermal protector has been designed into your cleaner to protect it from overheating. When the thermal protector activates, the main vacuum motor will stop operating. If this happens, proceed as follows:**

1. Turn the cleaner OFF (O) and unplug from electrical outlet.
2. Check the secondary cyclone area, pre-motor filter and post-motor filter for dirt accumulation.
3. Refer to the "Clearing Clogs" section on page 14.
4. When the motor cools for approximately 30 minutes, the thermal protector automatically resets and cleaning may continue. If the thermal protector continues to activate after following the above steps, your cleaner may need servicing. Call BISSELL Consumer Services, or visit the website.

**Note: The thermal protector controls the main vacuum motor only, not the brush motor. If the thermal protector activates, the brush will continue to operate normally; however, there will be no suction.**



## **CAUTION:**

To reduce the risk of injury from moving parts, turn off vacuum cleaner and disconnect power plug from electrical outlet.

# Troubleshooting

## Vacuum cleaner won't turn on

### Possible causes

1. Power cord not plugged in
2. Blown fuse/tripped breaker
3. Thermal protector activated

## No power at rotating floor brush

### Possible causes

1. Canister is not securely seated
2. Brush switch turned to "OFF"
3. Vacuum is in upright position

## Vacuum cleaner won't pick up dirt

### Possible causes

1. Incorrect height adjustment
2. Hose not attached to suction opening
3. Crack or hole in hose
4. Broken or worn drive belt
5. Rotating floor brush bristles worn
6. Rotating floor brush jammed
7. Clog in vacuum
8. Dirt container full
9. Dirt container or secondary cyclone not installed properly
10. Filters are dirty

## Vacuum cleaner is difficult to push

### Possible causes

1. Incorrect height adjustment

## Visible dirt escaping from cleaner

### Possible causes

1. Dirt container full
2. Filters or secondary cyclone missing or installed incorrectly
3. Dirt container installed incorrectly

### Remedies

1. Check electrical plug
2. Check/replace fuse or reset breaker
3. Allow cleaner to cool for 30 minutes, see page 15

### Remedies

1. Remove canister and replace, making sure that it "clicks" into place
2. Make sure brush switch is in "ON" position
3. Recline vacuum to operate brush

### Remedies

1. Adjust powerfoot to correct height setting
2. Grasp quick reach handle and firmly push hose wand onto the suction opening
3. Check hose and replace if needed
4. Replace drive belt, see pages 12-13
5. Replace brush
6. Remove brush and clean debris from brush ends
7. Follow instructions on page 14 for clearing dogs
8. Empty dirt container
9. Position correctly and lock in place
10. Check and clean pre-motor and post-motor filters, see page 11

### Remedies

1. Adjust powerfoot to correct height setting

### Remedies

1. Empty dirt container
2. Check secondary cyclone, pre-motor and post-motor filters for correct installation
3. Pull out and re-insert dirt container correctly



# Troubleshooting

Other maintenance or service not included in the manual should be performed by an authorized service representative.

Thank you for selecting a BISSELL product.

**Please do not return this product to the store.**

For any questions or concerns, BISSELL is happy to be of service. Contact us directly at 1-800-237-7691.

## Replacement parts - BISSELL vacuum

Item	Part No.	Part Name
1	3200	Style 8 Drive Belt (2-Pack)
2	203-1297	Standard Headlight Bulb
3	203-2073	Twist 'n Snap Hose
4	203-2085	Brush Roll - Grey (other colors also available)
5	3290	Style 8 Pre-Motor Filter
6	3091	Style 8 Post-Motor Filter
7	203-8093	Febreze® Style 8 & 14 Post-Motor Filter (available for all models)
8	203-2445	Secondary Cyclone
9	203-2444	Screen

\*Not all parts are included with every model.

1



2



3



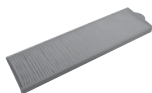
4



5



6/7



8



9



# Accessories parts - BISSELL vacuum

These items are available for purchase as accessories for your BISSELL Lift-Off® Multi cyclonic Pet: To purchase call 1-800-237-7691 or visit [www.bissell.com](http://www.bissell.com).

Item	Part No.	Part Name
1	203-1063	Crevice Tool
2	203-1399	Pet TurboBrush® Tool
3	203-1099	Dusting Brush/Upholstery Tool
4	203-6624	Stair Cleaning Tool (Available on Select Models)
5	203-6625	Telescoping Extension Wand
6	203-2081	Deluxe Bare Floor Tool (Available on Select Models)
7	203-5542	Shoulder Strap (Available on Select Models)
8	98Q1-A	Shedaway® Pet Grooming Vacuum Attachment (Available on Select Models)
9	203-1368	Pet Contour Tool®
10	203-7529	Pet TurboEraser™ Tool

1



2



3



4



5



6



7



8



9



10



# Warranty - BISSELL Lift-Off® Multi Cyclonic Vacuum

This warranty gives you specific legal rights, and you may also have other rights which may vary from state to state. If you need additional instruction regarding this warranty or have questions regarding what it may cover, please contact BISSELL Consumer Services by E-mail, telephone, or regular mail as described below.

## Limited Three Year Warranty

Subject to the \*EXCEPTIONS AND EXCLUSIONS identified below, upon receipt of the product BISSELL will repair or replace (with new or remanufactured components or products), at BISSELL's option, free of charge from the date of purchase by the original purchaser, for three years any defective or malfunctioning part.

See information below on "If your BISSELL product should require service".

This warranty applies to product used for personal, and not commercial or rental service. This warranty does not apply to fans or routine maintenance components such as filters, belts, or brushes. Damage or malfunction caused by negligence, abuse, neglect, unauthorized repair, or any other use not in accordance with the User's Guide is not covered.

## If your BISSELL product should require service:

Contact BISSELL Consumer Services to locate a BISSELL Authorized Service Center in your area.

If you need information about repairs or replacement parts, or if you have questions about your warranty, contact BISSELL Consumer Services.

### Website or E-mail:

[www.bissell.com](http://www.bissell.com)

Use the "Customer Support" tab.

### Or Call:

BISSELL Consumer Services

1-800-237-7691

Monday – Friday 8 am - 10 pm ET

Saturday 9 am - 8 pm. ET

### Or Write:

BISSELL Homecare, Inc.

PO Box 3606

Grand Rapids, MI 49501

ATTN: Consumer Services

BISSELL IS NOT LIABLE FOR INCIDENTAL OR CONSEQUENTIAL DAMAGES OF ANY NATURE ASSOCIATED WITH THE USE OF THIS PRODUCT. BISSELL'S LIABILITY WILL NOT EXCEED THE PURCHASE PRICE OF THE PRODUCT.

**Some states do not allow the exclusion or limitation of incidental or consequential damages, so the above limitation or exclusion may not apply to you.**

### \*EXCEPTIONS AND EXCLUSIONS FROM THE TERMS OF THE LIMITED WARRANTY

THIS WARRANTY IS EXCLUSIVE AND IN LIEU OF ANY OTHER WARRANTIES EITHER ORAL OR WRITTEN. ANY IMPLIED WARRANTIES WHICH MAY ARISE BY OPERATION OF LAW, INCLUDING THE IMPLIED WARRANTIES OF MERCHANTABILITY AND FITNESS FOR A PARTICULAR PURPOSE, ARE LIMITED TO THE THREE YEAR DURATION FROM THE DATE OF PURCHASE AS DESCRIBED ABOVE.

Some states do not allow limitations on how long an implied warranty last so the above limitation may not apply to you.

## Don't forget to register your product!

Registering is quick, easy and offers you benefits over the lifetime of your product. You'll receive:

### **BISSELL Rewards Points**

Automatically earn points for discounts and free shipping on future purchases.

### **Faster Service**

Supplying your information now saves you time should you need to contact us with questions regarding your product.

### **Product Support Reminders and Alerts**

We'll contact you with any important product maintenance reminders and alerts.

### **Special Promotions**

Optional: Register your email to receive notice of offers, contests, cleaning tips and more!

**Visit [www.bissell.com/registration](http://www.bissell.com/registration) now!**

## BISSELL consumer services

For information about repairs or replacement parts, or questions about your warranty, call:

### **BISSELL Consumer Services**

**1-800-237-7691**

Monday – Friday 8 am - 10 pm ET

Saturday 9 am - 8 pm ET

Or write:

BISSELL Homecare, Inc.

PO Box 3606

Grand Rapids MI 49501

ATTN: Consumer Services

Or visit the BISSELL website - **[www.bissell.com](http://www.bissell.com)**

When contacting BISSELL, have model number of cleaner available.

Please record your Model Number: \_\_\_\_\_

Please record your Purchase Date: \_\_\_\_\_

**NOTE: Please keep your original sales receipt. It provides proof of purchase date in the event of a warranty claim. See Warranty on page 19 for details.**



©2013 BISSELL Homecare, Inc.  
Grand Rapids, Michigan  
All rights reserved. Printed in Korea  
Part Number 110-4526  
Rev 09/13  
Visit our website at:  
[www.bissell.com](http://www.bissell.com)