



Earn BISSELL Rewards!

Register your
product today!
See details on
back page

LITTLEgreen® PROHEAT®

USER'S GUIDE
50Y6 SERIES

- 2 Thank You
- 3 Safety Instructions
- 4 Product View
- 5 Assembly
- 5-7 Operations
- 8 Maintenance and care
- 9 Troubleshooting
- 10 Replacement Parts
- 10 Accessories
- 11 Warranty
- 12 Product Registration
- 12 Consumer Services



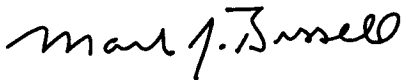
Thanks for buying a BISSELL Deep Cleaner

Everything we know about floor care went into the design and construction of this complete, high-tech home cleaning system.

Your deep cleaner is well made, and we back it with a limited one-year warranty. We also stand behind it with a knowledgeable, dedicated Consumer Services department, so, should you ever have a problem, you'll receive fast, considerate assistance.

My great-grandfather invented the floor sweeper in 1876. Today, BISSELL is a global leader in the design, manufacture, and service of high quality homeware products like your deep cleaner.

Thanks again, from all of us at BISSELL.



Mark J. Bissell
Chairman, President & CEO

IMPORTANT SAFETY INSTRUCTIONS

When using an electrical appliance, basic precautions should be observed, including the following:

Read all instructions before using your DEEP CLEANER

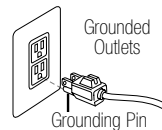
⚠ WARNING: To reduce the risk of fire, electric shock, or injury:

- Use only BISSELL cleaning products intended for use in this appliance.
- Do not use for any purpose other than described in this User's Guide.
- Use only manufacturer's recommended attachments.
- Do not expose to rain, store indoors.
- Do not handle Little Green® PROheat® plug or appliance with wet hands.
- Do not leave Little Green® PROheat® when it is plugged in.
- Do not put any object into appliance openings or use with blocked openings. Keep free of dust, lint, hair, and anything that may reduce air flow.
- Do not expose hair, loose clothing, fingers or body parts to openings or moving parts.
- Keep appliance on a level surface.
- Be extra careful when cleaning stairs.
- Do not allow to be used as a toy. Close attention is necessary when used by or near children.
- Do not carry the appliance while in use.
- Never spray at people or animals.
- Do not pick up hot or burning objects.
- Do not pick up flammable or combustible materials (lighter fluid, gasoline, kerosene, etc.) or use in the presence of explosive liquids or vapor.
- Do not pick up toxic material (chlorine bleach, ammonia, drain cleaner, gasoline, etc.).
- Do not use appliance in an enclosed space filled with vapors given off by oil based thinner, some moth proofing substances, flammable dust, or other explosive or toxic vapors.
- Do not pull or carry by cord, use cord as a handle, close door on cord, pull cord around sharp corners or edges, run appliance over cord, or expose cord to heated surfaces.
- Do not use with damaged cord or plug.
- Turn off all controls before unplugging.
- Unplug before attaching TurboBrush.
- Unplug from outlet when not in use and before conducting maintenance and troubleshooting.

- Do not use Little Green® PROheat® if it is not working as it should, has been dropped, damaged, left outdoors or dropped into water. Have it repaired at an Authorized Service Center.
- Unplug by grasping the plug, not the cord. Do not unplug by pulling the cord
- Always connect to a properly grounded outlet; see grounding instructions
- Do not modify the 3-prong grounded plug.

SAVE THESE INSTRUCTIONS GROUNDING INSTRUCTIONS

This appliance must be connected to a grounded wiring system. If it should malfunction or break down, grounding provides a safe path of least resistance for electrical current, reducing the risk of electrical shock. The cord for this appliance has an equipment-grounding conductor and a grounding plug. It must only be plugged into an outlet that is properly installed and grounded in accordance with all local codes and ordinances.

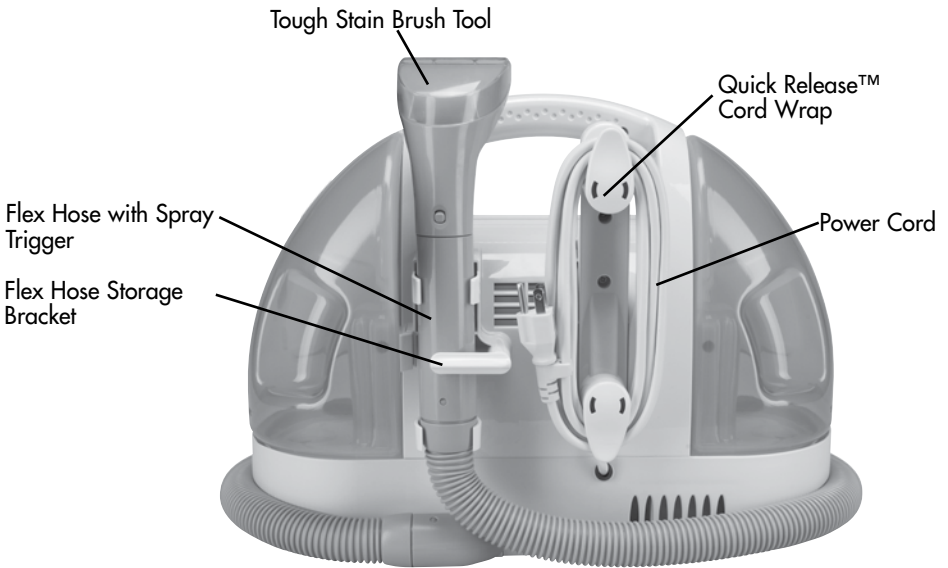
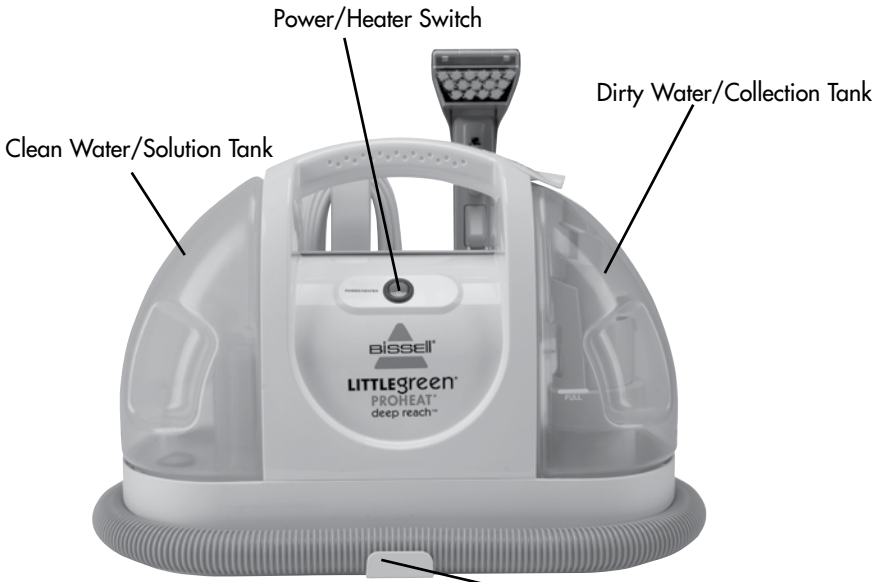


⚠ WARNING:

Improper connection of the equipment-grounding conductor can result in a risk of electrical shock. Check with a qualified electrician or service person if you aren't sure if the outlet is properly grounded. **DO NOT MODIFY THE PLUG.** If it will not fit the outlet, have a proper outlet installed by a qualified electrician. This appliance is designed for use on a nominal 120-volt circuit, and has a grounding attachment plug that looks like the plug in the drawing above. Make certain that the appliance is connected to an outlet having the same configuration as the plug. No plug adapter should be used with this appliance.

This model is for household use only.

Product view



Assembly

Assembling your Little Green PROheat is a simple process. The only thing you will need to assemble your cleaner is a Phillips head screwdriver.

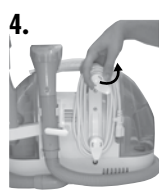
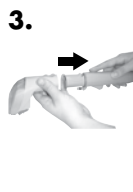
1. Slide the back plate of the flex hose clip into the opening on the front of the unit. You will hear a "snap" when it is locked in place.
2. Take the flex hose storage bracket and slide the lower plate into the opening on the back of unit. Make sure the screw holes line up.
3. Insert screw and tighten with a screwdriver.
4. Wrap the flex hose around unit and place hose grip into bracket. Turn bracket latch clockwise to lock in place.



Operations

Getting ready

1. To fill the clean water/solution tank.
 - A. Remove the tank by lifting it straight up and then away from the unit.
 - B. Unscrew the black cap at the bottom of the clean/solution tank.
 - C. Using a standard liquid measuring cup (or cap on BISSELL 2X Compact cleaning formula), measure 4oz. of formula (2 caps full) and pour into tank. Then fill with hot tap water to the WATER fill line. Replace and tighten the black cap. **DO NOT BOIL OR MICROWAVE WATER.**
 - D. Replace the clean/solution tank by lining up the vertical guides on the left side of the unit with the indentations on the clean/solution tank and gently slide it down into position.
2. Unwrap vacuum flex hose completely from onboard hose storage.
3. Attach your selected cleaning tool to the hose unit by pressing tool firmly until the button lock snaps into hole. Make certain the tool is securely attached.
4. Twist the quick release cord wrap clockwise to unwrap the power cord.
5. Plug into proper outlet.



WARNING:

Do not use this product while on any type of ladder. Do not place the product in a place where it will be stepped on or kicked while in use. Do not place the product on an elevated surface where it may be pulled off the surface while in use.

Operations

Pre-treating

Cleaning effectiveness will be enhanced if you pre-treat heavily stained or highly-soiled areas. Here's how to do it:

1. Hold the cleaning tool just above the surface of the carpet or upholstery to be cleaned. Press the trigger to release a spray of cleaning solution directly onto the soiled area.
2. Wait 3-5 minutes before cleaning.



WARNING:

Use only BISSELL 2X compact formulas in your cleaner. Use of cleaning formulas which contain lemon or pine oil may damage this appliance and void the warranty. Chemical spot cleaners or solvent-based soil removers also should not be used. These products may react with the plastic materials used in your cleaner, causing cracking or pitting.

Cleaning with your Little Green PROheat

1. Turn the power/heater to the ON position. Wait 30 seconds before use to allow the heater to reach the proper temperature.
2. Hold the tool approximately 1" above the soiled surface. Press the spray trigger to apply the cleaning solution to the soiled area. Raise the tool slightly to check for spray.
3. Using the brush on the tool, gently scrub the area to be cleaned.
4. For thorough cleaning, spray additional solution while the brush and suction are in contact with the surface.
5. Apply downward pressure on the tool and pull it toward you. The suction will remove the dirt and cleaning solution. Continue until no more dirt can be removed.
6. As a final step, use "drying strokes" (by not pressing the spray trigger) to remove as much liquid/moisture as possible. Repeat this step as often as necessary.

1.

Power/Heater Switch



WARNING:

Do not use an extension cord with this product. The use of an extension cord may result in a severe electrical shock, particularly if the extension cord does not have an electrical rating higher than that of the product, OR if the extension cord does not have a three-prong grounding plug and if the extension cord is not plugged into a circuit box with a ground fault circuit interrupter. Safety precautions such as keeping all connections off the ground and dry will not eliminate the danger.

Operations

Deep Reach tool attachment

select models only

1. Follow instructions 1-4 on page 5 "Getting ready".
2. Set tool on stain and press the trigger to spray solution onto the area to be cleaned.
3. Slowly move the tool back and forth over the soiled surface, keeping the tool in contact with the carpet.
4. Release trigger and move tool slowly over the soiled area to suction up water and dirt.
5. Continue to clean the area, working in small sections, until no more dirt can be removed.
6. Remove tool from hose when finished. Clean under warm water before storing.

IMPORTANT:

Check the manufacturer's tag before cleaning upholstery. "W" or "WS" on the tag means you can use your Little Green. If tag is coded with an "S" (with diagonal strike-through), or says "Dry Clean Only," do not proceed. If manufacturer's tag is missing or not coded, check with your furniture dealer.

Tip:

Deep cleaning stairs and high-traffic areas on a regular basis can prolong carpet life.

Tip:

Check upholstery stuffing before cleaning. Colored stuffing may bleed through the fabric when it becomes wet.

3.



5.



6.



Tip:

If you would like to store an extra tool on-board, visit BISSELL.com or call Consumer Services at 1-800-237-7691 to purchase a tool clip holder.

Maintenance and care

After Cleaning

1. Turn power switch to OFF position.
2. Unplug power cord from outlet.
3. Empty and rinse the dirty/collection tank after each use, OR when dirty water reaches the indicated maximum fill line. To remove the tank, lift up the dirty/collection Tank retainer lever and remove the tank from the unit.
4. Carry the dirty/collection tank to a toilet or sink to empty.
5. Rinse tank thoroughly.
6. Disconnect the cleaning tool from the spray trigger by pushing down on button lock and pulling straight off (**DO NOT twist tools to remove them**).
7. Once removed from the spray trigger, all tools can be cleaned by rinsing under clean running water.
8. Check spray nozzle for accumulated dirt or debris. If necessary, clean with soft bristle brush.



Tip:

If a significant amount of water and solution remains in the clean tank, your unit can be stored with liquid in the clean tank.

Machine storage

1. Wipe all surfaces with a soft cloth.
2. Wrap power cord around the cord wrap on the back of the unit.
3. Wrap flex hose around the base of the unit and secure the spray trigger.
4. Store unit in protected, dry area, at room temperature (40° to 110°F).

⚠ WARNING:

Keep spray away from face. Failure to do so may result in personal injury.

Troubleshooting

Reduced spray or no spray

Possible Causes

1. Tank release latch is not closed properly
2. Spray nozzle clogged
3. Clean water/solution tank empty
4. Clean water/solution tank insert clogged
5. Pump needs priming

Remedies

1. Lift up the tank release latch and press down firmly to make sure it is in place
2. Clean spray nozzle
3. Check/refill tank
4. Clean insert at bottom of clean water/solution tank
5. Gently lift clean water/solution tank while depressing the spray trigger OR gently squeeze clean tank while depressing spray trigger

Deep cleaner won't pick up cleaning solution

Possible Causes

1. Poor tool position
2. Dirty water/collection tank is full
3. Tool brush worn
4. Excess solution in vacuum flex hose
5. Incorrect Cleaning Formula

Remedies

1. Reposition tool on surface, follow recommended cleaning procedures
2. Empty dirty water/collection tank
3. Replace with new brush
4. Lift tool and point upwards to allow water in hose to flow into the dirty water/collection tank
5. Use BISSELL 2X compact formulas only

Other maintenance or service not included in the manual should be performed by an authorized service representative.

Thank you for selecting a BISSELL product.

Please do not return this product to the store.

For any questions or concerns, BISSELL is happy to be of service. Contact us directly at 1-800-237-7691.

Replacement parts

Item	Part No.	Part Name
1	203-5008	Clean Water/Solution Tank (includes cap and insert assembly)
2	203-7158	Clean Water/Solution Tank (white)
3	203-5009	Collection/Dirty Water Tank (includes the airstack and float assembly)
4	203-7144	Collection/Dirty Water Tank (white)
5	203-5011	Quick Release™ Cord Wrap Clip
6	203-5013	Flex Hose Clip
7	203-5014	Cap & Insert Assembly

1&2



3&4



5



6



7



Accessories -

Item	Part No.	Part Name
1	203-6653	4" Upholstery/Carpet Tool
2	203-6654	6" Upholstery/Carpet Tool
3	203-6872	Spraying Crevice Tool - Dusk
4	314-9162	3" Tough Stain Tool- Dusk
5	203-6652	TurboBrush - Dusk
6	203-7569	Deep Reach® Tool
7	203-5012	Tool Clip
8	79B9	BISSELL 2X Little Green® Formula 32 oz.
9	79B9-1	BISSELL 2X Little Green® Formula 16 oz.
10	74R7	BISSELL 2X Pet Stain & Odor Removal Formula 32 oz.
11	74R7-1	BISSELL 2X Pet Stain & Odor Removal Formula 16 oz.

1



2



3



4



5



6



7



8



9



10



11



Earn Rewards Points!

To qualify you for discounts, rebates, and other BISSELL perks.
Visit www.bissell.com/rewards to learn more.

Warranty - BISSELL Little Green® PROheat®

This warranty gives you specific legal rights, and you may also have other rights which may vary from state to state. If you need additional instruction regarding this warranty or have questions regarding what it may cover, please contact BISSELL Consumer Services by E-mail, telephone, or regular mail as described below.

Limited One Year Warranty

Subject to the *EXCEPTIONS AND EXCLUSIONS identified below, upon receipt of the product BISSELL Homecare, Inc. will repair or replace (with new or remanufactured components or products), at BISSELL's option, free of charge from the date of purchase by the original purchaser, for one year any defective or malfunctioning part.

See information below on "If your BISSELL product should require service".

This warranty applies to product used for personal, and not commercial or rental service. This warranty does not apply to fans or routine maintenance components such as filters, belts, or brushes. Damage or malfunction caused by negligence, abuse, neglect, unauthorized repair, or any other use not in accordance with the User's Guide is not covered.

If your BISSELL product should require service:

Contact BISSELL Consumer Services to locate a BISSELL Authorized Service Center in your area.

If you need information about repairs or replacement parts, or if you have questions about your warranty, contact BISSELL Consumer Services.

Website or E-mail:

www.bissell.com

Or Call:

BISSELL Consumer Services

1-800-237-7691

Monday - Friday 8 a.m. - 10 p.m. ET

Saturday 9 a.m. - 8 p.m. ET

Or Write:

BISSELL Homecare, Inc.

PO Box 3606

Grand Rapids, MI 49501

ATTN: Consumer Services

BISSELL HOMECARE, INC. IS NOT LIABLE FOR INCIDENTAL OR CONSEQUENTIAL DAMAGES OF ANY NATURE ASSOCIATED WITH THE USE OF THIS PRODUCT. BISSELL'S LIABILITY WILL NOT EXCEED THE PURCHASE PRICE OF THE PRODUCT.

Some states do not allow the exclusion or limitation of incidental or consequential damages, so the above limitation or exclusion may not apply to you.

*EXCEPTIONS AND EXCLUSIONS FROM THE TERMS OF THE LIMITED WARRANTY

THIS WARRANTY IS EXCLUSIVE AND IN LIEU OF ANY OTHER WARRANTIES EITHER ORAL OR WRITTEN. ANY IMPLIED WARRANTIES WHICH MAY ARISE BY OPERATION OF LAW, INCLUDING THE IMPLIED WARRANTIES OF MERCHANTABILITY AND FITNESS FOR A PARTICULAR PURPOSE, ARE LIMITED TO THE ONE YEAR DURATION FROM THE DATE OF PURCHASE AS DESCRIBED ABOVE.

Some states do not allow limitations on how long an implied warranty last so the above limitation may not apply to you.

NOTE: Please keep your original sales receipt. It provides proof of date of purchase in the event of a warranty claim.



Don't forget to register your product!

Registering is quick, easy and offers you benefits over the lifetime of your product. You'll receive:

BISSELL Rewards Points

Automatically earn points for discounts and free shipping on future purchases.

Faster Service

Supplying your information now saves you time should you need to contact us with questions regarding your product.

Product Support Reminders and Alerts

We'll contact you with any important product maintenance reminders and alerts.

Special Promotions

Optional: Register your email to receive notice of offers, contests, cleaning tips and more!

Visit www.bissell.com/registration now!



BISSELL consumer services

For information about repairs or replacement parts, or questions about your warranty, call:

BISSELL Consumer Services

1-800-237-7691

Monday - Friday 8 a.m. — 10 p.m. ET

Saturday 9 a.m. — 8 p.m. ET

Or write:

BISSELL Homecare, Inc.

PO Box 3606

Grand Rapids MI 49501

ATTN: Consumer Services

Or visit the BISSELL website - **www.bissell.com**

When contacting BISSELL, have model number of cleaner available.

Please record your Model Number: _____

Please record your Purchase Date: _____

NOTE: Please keep your original sales receipt. It provides proof of purchase date in the event of a warranty claim. See Warranty on page 11 for details.



©2011 BISSELL Homecare, Inc.
Grand Rapids, Michigan
All rights reserved. Printed in China
Part Number 120-4327
Rev 4/11
Visit our website at:
www.bissell.com

