

PowerWash™ Powerbrush



USER'S GUIDE 1622 SERIES 220-240V

3 Safety Instructions

4 Product View

5 Assembly

5-6 Special Features

6-8 Operation

8-9 Maintenance and Care

9-10 Troubleshooting

10 Consumer Services

11 Replacement Parts

12 Warranty



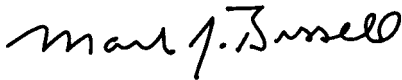
Thank you for buying a BISSELL deep cleaner

We're glad you purchased a BISSELL deep cleaner. Everything we know about floor care went into the design and construction of this complete, high-tech home cleaning system. By purchasing this product you are helping BISSELL with our commitment to reducing our impact on the environment through an expanding range of sustainable design efforts.

Your deep cleaner is well made, and we back it with a limited one-year warranty. We also stand behind it with a knowledgeable, dedicated Consumer Services department, so, should you ever have a problem, you'll receive fast, considerate assistance.

My great-grandfather invented the floor sweeper in 1876. Today, BISSELL is a global leader in the design, manufacture, and service of high quality homecare products like your deep cleaner.

Thanks again, from all of us at BISSELL.



Mark J. Bissell
President and Chief Executive Officer

IMPORTANT SAFETY INSTRUCTIONS

When using an electrical appliance, basic precautions should be observed, including the following:

READ ALL INSTRUCTIONS BEFORE USING YOUR UPRIGHT DEEP CLEANER.

Always connect to a properly Earthed outlet. Unplug from outlet when not in use and before conducting maintenance or troubleshooting.

 **WARNING:** To reduce the risk of fire, electric shock, or injury:

- Use indoors only
- Do not immerse
- Use only on surfaces moistened by cleaning process
- Do not leave machine when it is plugged in
- Do not service machine when it is plugged in
- If the supply cord is damaged, it must be replaced by the manufacturer or its service agent in order to avoid a hazard
- Do not use machine if it has been dropped, damaged, left outdoors or dropped into water
- Do not expose to rain, store indoors
- Do not pull or carry by cord, use cord as a handle, close door on cord, pull cord around sharp corners or edges, run appliance over cord, or expose cord to heated surfaces
- Do not carry the appliance while in use
- Do not unplug by pulling on cord; unplug by grasping plug not the cord
- Do not handle plug or appliance with wet hands
- Do not put any object into appliance openings, use with blocked opening or restrict air flow
- Do not expose hair, loose clothing, fingers or body parts to openings or moving parts
- Do not pick up hot or burning objects
- Do not pick up flammable or combustible materials (lighter fluid, petrol, kerosene, etc.) or use in the presence of explosive liquids or vapours
- Do not use appliance in an enclosed space filled with vapours given off by oil base paint, paint thinner, some moth proofing substances, flammable dust, or other explosive or toxic vapours

- Remove plug from electrical outlet before cleaning or maintaining the appliance
- Not intended for use by young children or infirm persons without supervision
- Young children should be supervised to ensure that they do not play with the appliance
- Do not pick up toxic material (chlorine bleach, ammonia, drain cleaner, petrol, etc.)
- Do not modify the Earthed plug
- Do not allow to be used as a toy
- Do not use for any purpose other than described in this User's Guide
- Use only manufacturer's recommended attachments
- Use only cleaning products formulated by BISSELL for use in this appliance to prevent internal component damage
- Keep openings free of dust, lint, hair, etc.
- Keep appliance on a level surface
- Turn off all controls before unplugging
- Be extra careful when cleaning stairs
- Pay close attention when working around children

SAVE THESE INSTRUCTIONS.

THIS MODEL IS FOR HOUSEHOLD USE ONLY.

 **WARNING:** This appliance must be Earthed.

IMPORTANT FOR OPERATION ON A 220-240 VOLT A.C. 50/60 Hz POWER SUPPLY ONLY.

If your appliance is fitted with a nonrewireable BS 1363 plug it must not be used unless a 13 amp (ASTA approved to BS 1362) fuse is fitted in the carrier contained in the plug. Spares may be obtained from your BISSELL supplier. If for any reason the plug is cut off, it must be disposed of, as it is an electric shock hazard should it be inserted into a 13 amp socket.

Product view



WARNING:

To reduce the risk of fire and electric shock due to internal component damage, use only BISSELL cleaning fluids intended for use with the deep cleaner. Non-BISSELL cleaning solutions may harm the machine and void the warranty.

Cleaning fluid

Keep plenty of genuine BISSELL Fiber Cleansing Formula™ on hand so you can clean and protect whenever it fits your schedule. Always use genuine BISSELL deep cleaning formulas. Non-BISSELL cleaning solutions may harm the machine and will void the warranty.



48 oz. BISSELL Fiber Cleansing Formula™ with Scotchgard™ Protector

item # 710E



48 oz. BISSELL Multi-Allergen Removal™ Formula™ with Scotchgard™ Protector

item # 720E



48 oz. BISSELL Pet Odor and Soil Removal™ Formula™ with Scotchgard™ Protector

item # 730E



48 oz. BISSELL Natural Orange Extract Formula™ with Scotchgard™ Protector

item # 740E



48 oz. BISSELL Lavender Essence Formula™ with Scotchgard™ Protector

item # 750E

How to use this guide

This user's guide has been designed to help you get the maximum satisfaction from your BISSELL deep cleaner. You'll find assembly and operating instructions, safety precautions, as well as maintenance and troubleshooting instructions. Please read this user's guide thoroughly before assembling your deep cleaner.

Your deep cleaner comes in three easy to assemble components:

- Handle assembly
- Upper body assembly
- Lower body assembly

Three Phillips head screws are also included and can be found taped to handle assembly.

Assembly

The only tool you will need to assemble your cleaner is a Phillips head screwdriver.

1. Slide upper body assembly onto lower body and secure with two screws.
2. Slide handle assembly down into upper body until it will go no further and secure with screw.

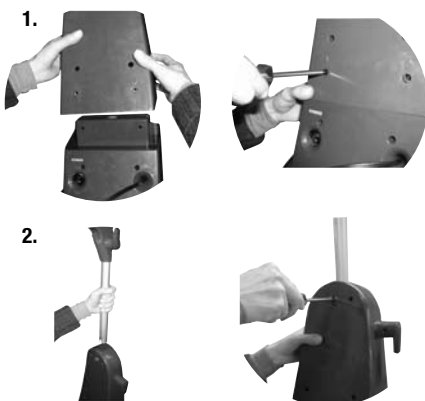


WARNING:

Do not plug in your cleaner until you have completely assembled it per the following instructions and are familiar with all instructions and operating procedures.

Tip:

Deep cleaning carpeting regularly can reduce dust and allergens in your home.



Special features of your BISSELL deep cleaner

Your BISSELL deep cleaner is a home cleaning system that uses a combination of hand hot tap water, BISSELL advanced cleaning formula, brush agitation and suction to safely clean carpets.

DirtLifter™ PowerBrush

The DirtLifter PowerBrush is designed to enhance cleaning performance. The bristle pattern safely lifts out the deep down dirt while gently grooming carpet fibers. The floating suspension self-adjusts to all carpet heights. When the power is ON (I) and the machine is in the upright position, your carpet is protected because the brushes are lifted up off the carpet.



WARNING:

To reduce the risk of fire, use only BISSELL advanced deep cleaning formula for full size machines in your deep cleaner. Use of cleaning formulas that contain lemon or pine oil may damage this appliance and void the warranty. Chemical spot cleaners or solvent-based soil removers should not be used. These products may react with the plastic materials used in your deep cleaner causing cracking or pitting.

Special features of your BISSELL deep cleaner

Measuring cup

Your deep cleaner is equipped with a measuring cup for adding the proper amount of formula to the 2-in-1 water tank. For convenience the measuring cup is built into the lid of the 2-in-1 water tank.

2-in-1 water tank

Our 2-in-1 water tank system is designed with a heavy duty bladder inside for clean water. As you clean, the clean water in the bladder will empty and mix with the cleaning formula. Dirty water pulled out of your carpets will collect around the outside of the bladder so that clean and dirty water are always kept separate. This allows the user to maximize tank space, yet only carry one tank to and from the sink for emptying and filling.



ATTENTION:

Some Berber carpets have a tendency to fuzz with wear. Repeated strokes in the same area with an ordinary vacuum or deep cleaner may aggravate this condition.

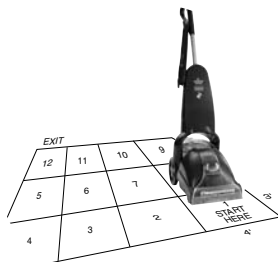
Operation

Before you clean

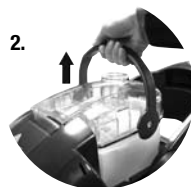
1. Plan activities to give your carpet time to dry.
2. **Move furniture** to another area if cleaning an entire room (optional).
3. **Vacuum area** with a dry vacuum cleaner before deep cleaning.
4. Plan your cleaning route to leave an exit path. It is best to begin cleaning in the corner farthest from your exit.

Fill the 2-in-1 water tank

1. With your foot, press the handle release lever on the back of the machine and lay handle down to access the tank.
2. Remove the tank from the base of the machine by lifting the tank carry handle.



Handle Release Lever



Operation

Fill the 2-in-1 water tank (continued)

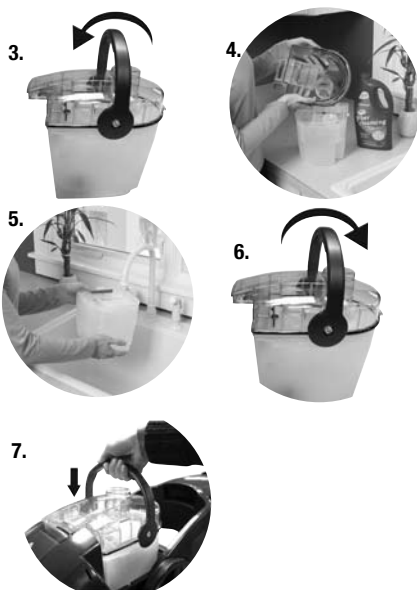
3. Carry like a bucket to the sink. Rotate the handle forward to unlatch the lid. Remove lid, turn over and locate built in measuring cup.
4. Fill formula to the indicated fill line on the built in measuring cup and pour into mouth of the bladder.
5. Fill up the bladder with clean hand hot tap water. ***Do not boil or microwave water as it can destroy the bladder.**
6. Replace the top of the tank by matching the lid and tank edges. Handle must be in the forward position in order to replace lid. Rotate the handle to the carrying position to latch the lid.

Note: Remember to secure the lid and test to make sure it is secure before picking up the tank.

7. Place tank into machine base, seating firmly in place. Rotate tank handle back into latched position. Bring machine handle back into upright position.

Carpet cleaning strokes

1. Plug the deep cleaner into a proper outlet and turn the power switch ON (I). The switch is located on the back of the unit.
2. With your foot, press the handle release lever on the back of the lower body of unit.
3. While pressing the spray trigger, make one slow forward wet pass and another back. Let the BISSELL advanced deep cleaning formula and DirtLifter PowerBrush do the work for you. **Caution: Do not over wet.**
4. Release the spray trigger and make one slow forward and backward pass over the same area to remove any residual dirty water and aid in drying.
5. Repeat cleaning passes until solution being pulled up appears clean. Continue passes without pressing the spray trigger until you can't see any more water being suctioned up.



Tip: Thorough vacuuming before deep cleaning will prevent early clogging of the lint trap.

WARNING:
To reduce the risk of fire and electric shock due to internal component damage, use only BISSELL cleaning fluids intended for use with the deep cleaner. Non-BISSELL cleaning solutions may harm the machine and void the warranty.

Operation

Empty the 2-in-1 water tank/clean removable nozzle

1. Turn power switch OFF (O). Remove the 2-in-1 water tank from the base using the tank carry handle. Carry the tank like a bucket to a utility sink or outside where you will dispose of the collection water. Remove the top of the tank by rotating the handle forward to unlatch lid and lifting lid off tank.
2. Empty collection water from bottom of tank.
3. After each use, remove and rinse the lint screen located on the tank lid.
4. If nozzle needs to be rinsed, remove by grasping handle at top and pulling forward. Clean removable nozzle by rinsing under running water.
5. When finished replace nozzle by slightly raising front of machine to line up slots on the base of the machine with the hooks on nozzle. Attach at base first and then click nozzle into place.
NOTE: If nozzle is not attached properly, loss of suction will occur.
6. To continue carpet cleaning refer back to page 7, beginning with "Fill the 2-in-1 water tank".

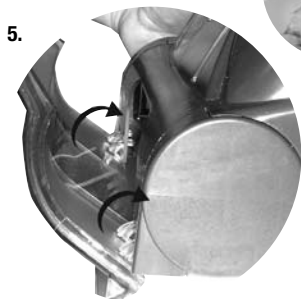
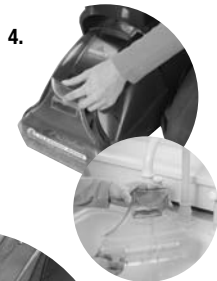
If cleaning is complete, refer to the "Maintenance and care" section on below.

Maintenance and care

Machine care

For best results, a few simple steps can assure your machine is well maintained after your cleaning is complete.

1. Turn power switch OFF (O). Unplug the machine and wrap the power cord.
2. After emptying the 2-in-1 water tank, rinse it out at a faucet with running hand hot tap water, taking care to clean underneath and around the heavy duty bladder. Clean out red lint screen. Removable nozzle may be rinsed if necessary.
3. Replace the 2-in-1 water tank on the machine.
4. Any loose hair or debris can be pulled from the brush roll if desired and thrown away.
5. Wipe the machine's exterior with a soft cloth.
6. After carpet is dry, vacuum again to remove hair and fuzz.



Maintenance and care

Machine storage

Put the unit away in a closet or basement for the next use. Store cleaner in a protected, dry area. Since this product uses water, it must not be stored where there is a danger of freezing. Freezing will damage internal components and void the warranty.

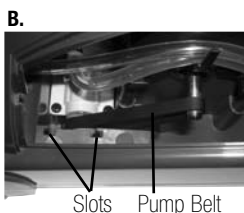
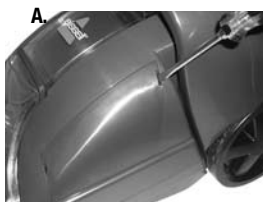
WARNING:
To reduce the risk of fire, electric shock or injury, unplug from the outlet before servicing.

Troubleshooting

Reduced Spray OR No Spray

Possible cause

1. Bladder may be empty
2. 2-in-1 water tank may not be seated properly.
3. Pump may have lost prime.
4. The pump belt may be broken.



Remedies

1. Turn power switch OFF (O); Refill bladder with clean hand hot tap water.
2. Turn power switch OFF (O); remove tank and reseal tank.
3. Turn power switch OFF (O); after 1 minute turn ON (I) and depress spray trigger.
4. Turn power switch OFF (O) and unplug from the outlet. To check if a pump belt has broken, you will need a flat head screwdriver.

A. Insert the blade end into the slot of the belt access door to release. Examine the belt for breakage. You should be able to see the pump belt looped around the motor shaft. If it is broken or missing, please refer to Replacement Parts on page 11 before calling BISSELL Consumer Services. Complete installation instructions will accompany the replacement belt.

B. When replacing belt access door be sure to line up slots of belt access door with slots in machine, slide door into place and snap shut.

DirtLifter PowerBrush Does Not Turn

Possible cause

1. The brush belt or pump belt is off or broken.

Remedies

1. Refer to Remedy 4 above to check if brush belt or pump belt is broken.

Cleaner Not Picking Up Solution

Possible cause

1. Removable nozzle may not be properly attached.
2. 2-in-1 water tank lid is not properly installed.

Remedies

1. Make sure nozzle is on correctly by slightly raising front of machine to line up slots on the base of the machine with the hooks on nozzle. Attach at base first and then click nozzle into place.
2. Re-install lid; refer to the image on page 7.

Troubleshooting

Cleaner Not Picking Up Solution

Possible cause

3. 2-in-1 water tank is not properly seated.
4. 2-in-1 water tank has picked up maximum dirty water.
5. The lint screen may be clogged

Remedies

3. Tank must be firmly seated to function; remove and reseat tank.
4. Empty tank and refill, refer to the Operation section.
5. Clean out lint screen. Refer to page 8.

Other maintenance or service not included in the manual should be performed by an authorized service representative.

Thank you for selecting a BISSELL product.

Please do not return this product to the store

BISSELL Consumer Services

If your BISSELL product should require service:

In the UK, Australia or New Zealand, call BISSELL Consumer Services at the numbers below and we will give you the location of a BISSELL Authorized Service Center in your area. For all other countries, contact your local in country distributor for questions, service, or repair.

If you have questions about your warranty or need replacement parts please contact the numbers below.

For UK inquiries:

Monday - Thursday 9 am — 5 pm
Friday 9 am — 4 pm

BISSELL Homecare (Overseas) Inc.

The Boat Yard
105 Straight Road
Old Windsor
Berkshire, SL4 2SE
United Kingdom
Telephone: 0870-225-0109

For New Zealand inquiries:

Monday - Friday 9 am — 5 pm

Parex Industries Ltd.

103 Central Park Drive
Henderson
Auckland
New Zealand
Telephone: 0800-247-735

Or visit the BISSELL website - www.bissell.com

When contacting BISSELL, have model number of unit available.

Please record your Model Number: _____

Please record your Purchase Date: _____

Note: Please keep your original sales receipt. It provides proof of date of purchase in the event of a warranty claim. See Warranty on page 12 for details.

Please do not return this product to the store.

For Australian inquiries:

Monday - Friday 9 am — 5 pm

BISSELL AUSTRALIA PTY LIMITED

Unit 35
15 Ricketts Road
Mount Waverley, Victoria 3149
Australia
Telephone: 1-800-811-183

For all other inquiries:

Monday - Friday 8 am — 4 pm

BISSELL Homecare, Inc.

PO Box 1888
Grand Rapids, MI 49501 USA
Telephone: 01-616-453-4451
Fax: 01-616-453-1383

Replacement parts

Below is a list of common replacement parts. While not all of these parts may have come with your specific machine, all are available to you for purchase, if desired.

Item	Part No.	Part Name
1	203-0104	Tank Assembly Complete
2	203-0102	Tank Base
3	203-0124	Removable Nozzle
4	215-0628	Replacement Pump Belt (with instructions)
5	015-0621	Replacement Brush Belt (with instructions)
6	203-0105	Lint Screen

1



2



3



4



5



6



Cleaning Formula: Refer to bottom of page 4 of this guide for a full selection of cleaning formula available for purchase.

Warranty - BISSELL PowerWash Powerbrush

This warranty gives you specific legal rights, and you may also have other rights which may vary from country to country. If you need additional instruction regarding this warranty or have questions regarding what it may cover, please contact BISSELL Consumer Services by telephone, or regular post as described below, or contact your local in country distributor.

Limited One Year Warranty

Subject to the *EXCEPTIONS AND EXCLUSIONS identified below, BISSELL Homecare, Inc., will replace (with new or remanufactured components), at BISSELL's option, free of charge from the date of purchase by the original purchaser, for one year any defective or malfunctioning part do to manufacturers defect.

This warranty applies to product used for personal, and not commercial or rental service. This warranty does not apply to fans or routine maintenance components such as filters, belts, or brushes. Damage or malfunction caused by negligence, abuse, or use not in accordance with the User's Guide is not covered.

For UK inquiries:

Monday - Thursday 9 am — 5 pm
Friday 9 am — 4 pm

BISSELL Homecare (Overseas) Inc.

The Boat Yard
105 Straight Road
Old Windsor
Berkshire, SL4 2SE
United Kingdom
Telephone: 0870-225-0109

For Australian inquiries:

Monday - Friday 9 am — 5 pm

BISSELL AUSTRALIA PTY LIMITED

Unit 35
15 Ricketts Road
Mount Waverley, Victoria 3149
Australia
Telephone: 1-800-811-183

For New Zealand inquiries:

Monday - Friday 9 am — 5 pm

Parex Industries Ltd.

103 Central Park Drive
Henderson
Auckland
New Zealand
Telephone: 0800-247-735

For all other inquiries:

Monday - Friday 8 am — 4 pm

BISSELL Homecare, Inc.

PO Box 1888
Grand Rapids, MI 49501 USA
Telephone: 01-616-453-4451
Fax: 01-616-453-1383

BISSELL HOMECARE INC. IS NOT LIABLE FOR INCIDENTAL OR CONSEQUENTIAL DAMAGES OF ANY NATURE ASSOCIATED WITH THE USE OF THIS PRODUCT. BISSELL'S LIABILITY WILL NOT EXCEED THE PURCHASE PRICE OF THE PRODUCT.

*EXCEPTIONS AND EXCLUSIONS FROM THE TERMS OF THE LIMITED WARRANTY

THIS WARRANTY IS EXCLUSIVE AND IN LIEU OF ANY OTHER WARRANTIES EITHER ORAL OR WRITTEN. ANY IMPLIED WARRANTIES WHICH MAY ARISE BY OPERATION OF LAW, INCLUDING THE IMPLIED WARRANTIES OF MERCHANTABILITY AND FITNESS FOR A PARTICULAR PURPOSE, ARE LIMITED TO THE ONE YEAR DURATION FROM THE DATE OF PURCHASE AS DESCRIBED ABOVE.



©2008 BISSELL Homecare, Inc
Grand Rapids, Michigan
All rights reserved. Printed in China
Part Number 120-4040
Rev 5/08
Visit our website at: www.bissell.com
Scotchgard is a trademark of 3M

