

PowerForce™

USER'S GUIDE
3525/3530/3537/46E5/71Y7 SERIES



3 Safety Instructions

4 Product View

5 Assembly

6-9 Operations

7-10 Maintenance and Care

10-11 Troubleshooting

11 Replacement Parts

12 Consumer Services

12 Warranty



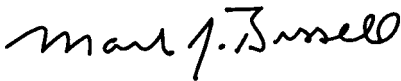
Thank you for buying a BISSELL PowerForce™

We're glad you purchased a BISSELL PowerForce Vacuum. Everything we know about floor care went into the design and construction of this powerful, high-tech home vacuuming system.

Your BISSELL PowerForce is well made, and we back it with a limited one year warranty. We also stand behind it with a knowledgeable, dedicated Consumer Services Department, so, should you ever have a problem, you'll receive fast, considerate assistance.

My great-grandfather invented the floor sweeper in 1876. Today, BISSELL is a global leader in the design, manufacture, and service of high quality homecare products like your BISSELL PowerForce.

Thanks again, from all of us at BISSELL.



Mark J. Bissell

President and Chief Executive Officer

IMPORTANT SAFETY INSTRUCTIONS

When using an electrical appliance, basic precautions should be observed, including the following:

READ ALL INSTRUCTIONS BEFORE USING YOUR UPRIGHT VACUUM.

Always connect to a polarized outlet (left slot is wider than right). Unplug from outlet when not in use and before conducting maintenance.

WARNING: To reduce the risk of fire, electric shock, or injury:

- Do not modify the polarized plug to fit a non-polarized outlet or extension cord.
- Do not leave vacuum cleaner unattended when it is plugged in.
- Unplug from outlet when not in use and before servicing.
- Do not use outdoors or on wet surfaces.
- Do not allow children to operate vacuum cleaner or use as a toy.
- Close attention is necessary when used by or near children.
- Do not use for any purpose other than described in this User's Guide.
- Use only manufacturer's recommended attachments.
- Do not use with damaged cord or plug.
- If appliance is not working as it should, has been dropped, damaged, left outdoors, or dropped into water, have it repaired at an authorized service center.
- Do not pull or carry by cord, use cord as a handle, close a door on cord, or pull cord around sharp edges or corners. Do not run appliance over cord. Keep cord away from heated surfaces.
- Do not unplug by pulling on cord. To unplug, grasp the plug, not the cord.
- Do not handle vacuum cleaner or plug with wet hands.
- Do not put any object into openings. Do not use with any opening blocked; keep openings free of dust, lint, hair, and anything that may reduce air flow.

- Keep hair, loose clothing, fingers, and all parts of body away from openings and moving parts.
- Turn off all controls before plugging or unplugging vacuum cleaner.
- Use extra care when cleaning stairs.
- Do not pick up flammable materials (lighter fluid, gasoline, kerosene, etc.) or use in the presence of explosive liquids or vapors.
- Do not pick up toxic material (chlorine bleach, ammonia, drain cleaner, etc.).
- Do not use vacuum cleaner in an enclosed space filled with vapors given off by oil base paint, paint thinner, some moth proofing substances, flammable dust, or other explosive or toxic vapors.
- Do not pick up hard or sharp objects such as glass, nails, screws, coins, etc.
- Do not pick up anything that is burning or smoking, such as cigarettes, matches, or hot ashes.
- Do not use without filters in place.
- Use only on dry, indoor surfaces.
- Keep appliance on a level surface.
- Do not carry the vacuum cleaner while it is running.

SAVE THESE INSTRUCTIONS FOR FUTURE USE.

THIS APPLIANCE HAS A POLARIZED PLUG.

To reduce the risk of electric shock, this appliance has a polarized plug (one blade is wider than the other). This plug will fit in a polarized outlet only one way. If the plug does not fit fully in the outlet, reverse the plug. If it still does not fit, contact a qualified electrician to install a proper outlet. Do not change the plug in any way.

This model is for household use only.

Product view



⚠ CAUTION:
 Do not plug in your vacuum cleaner until you are familiar with all instructions and operating procedures.



Made from 100% post consumer recycled content

How to use this guide

This User's Guide has been designed to help you get the utmost satisfaction from your BISSELL PowerForce. You'll find assembly and operating instructions, safety precautions, as well as maintenance and troubleshooting instructions. Please read this Guide thoroughly before assembling your vacuum cleaner.

Pay particular attention to the product diagram, assembly instructions, and part names. Locate and organize all parts before assembly. Following this User's Guide will greatly enhance your ability to get the most performance from your BISSELL PowerForce for many years.

Assembly

The only tool you'll need to assemble your vacuum cleaner is a Phillips screwdriver.

Attach handle to vacuum

1. Stand the vacuum upright and slide the base of the handle firmly into the grooves at the top of the vacuum body.
2. Check to be sure the handle is fitted to the vacuum body. If there is a gap in front, continue to push firmly until the handle is flush.
3. Insert one screw from the assembly packet into the existing hole in the back of the handle. Tighten securely with a screwdriver.

Attach vacuum hose and tools

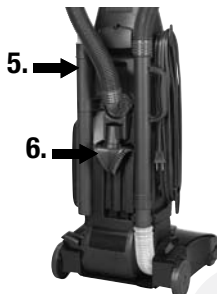
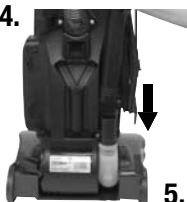
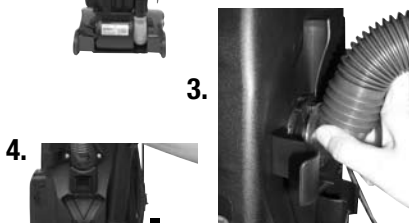
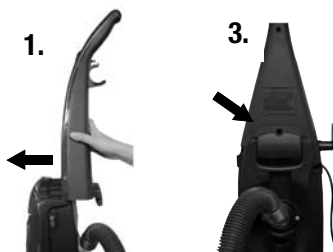
1. Position the hose collar on the back of the vacuum as shown.
2. Attach the hose collar with two screws from the assembly packet. Tighten securely with a screwdriver.
3. Line up the tabs on the base of the Twist 'n Snap Hose with the corresponding tab notches on the hose collar as shown. Turn the Twist 'n Snap Hose to the left to lock the hose into place.
4. Grasping the Quick Reach™ Handle, slide the end of the hose wand onto the suction intake opening. Snap the hose into the hose clip.

NOTE: The powerfoot will not operate effectively unless the hose wand is firmly attached to the suction intake opening.

5. Place the crevice tool inside the extension wand and slide them into the storage clip as shown.
6. Snap the combination upholstery/dusting brush tool into the storage clip as shown.



WARNING:
Plastic film can be dangerous. To avoid danger of suffocation, keep away from babies and children.



Operation

Handle position

Press the handle release pedal with your foot to place your BISSELL PowerForce into one of three cleaning positions.

1. **Upright**- For storage and above floor cleaning with special tools.
2. **Normal Cleaning**- Press handle release pedal once. Use for most household floor cleaning tasks.
3. **Low Cleaning**- With the vacuum in normal cleaning position press handle release pedal again. Use for reaching under low furniture such as tables, chairs and beds.

Powerfoot height adjustment

The powerfoot/rotating floor brush on your BISSELL PowerForce can be adjusted to clean several floor surfaces.

NOTE: For optimal cleaning performance, adjust to the lowest practical setting. If your cleaner is difficult to push, adjust to the next higher setting.

1. Place handle in upright position.
2. Turn height adjustment knob to desired setting.
Lowest Setting - For bare floors.
Medium Settings - For short and medium pile carpets.
Highest Setting - For plush pile or Berber carpet.
3. Place the handle into the normal cleaning position and the powerfoot will adjust to the setting chosen.

NOTE: You may also adjust the setting while in the normal cleaning position.

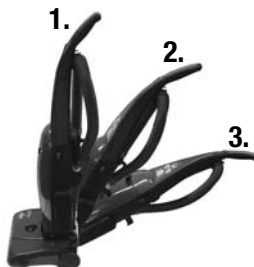
Special tools

Your BISSELL PowerForce is not only a powerful carpet and rug vacuum cleaner, it's also a versatile above floor vacuum cleaner when you select one of the special tools.

1. Raise handle to upright position.
2. Grasp the quick reach handle and lift up to separate from suction intake opening.
3. Attach tools by firmly pushing onto hose wand or extension wand.

Tip:

Before cleaning under low furniture, check area first for objects that might harm the unit or block the vacuum hose.



CAUTION:

The rotating floor brush continues to rotate while tools are in use. To reduce the risk of injury from moving parts, always move the vacuum cleaner with the carrying handle at the back of the cleaner. Always place vacuum cleaner on floor with handle in upright position when using tools. Never place your fingers under the vacuum cleaner when it is running. Never place powerfoot on furniture or uneven surfaces. Do not place vacuum cleaner close enough to objects to pull them into rotating brush.



Tip:

Hair, string and small objects can block the vacuum hose or tools. Check them occasionally for obstructions. See Troubleshooting Guide for instructions.

Operation

Special tools

Combination upholstery/dusting brush tool:
Two types of cleaning tools are included in one attachment: rotate for desired tool.

- Use brush side to dust furniture, blinds, books, lamps, shelves.
- Use upholstery side for curtains, draperies, cushions, fabrics.

Crevice Tool: Use in tight narrow spaces.

Extension Wand: Use with desired attachments for a longer reach.

NOTE: When using the hose for above floor cleaning, make sure the powerfoot does not tilt forward.

Power cord

When you are done using your BISSELL PowerForce, return it to the upright position and store the power cord.

1. Turn vacuum cleaner OFF.
2. Unplug power cord by grasping the polarized plug (NOT the cord) and disconnect from outlet.
3. Loop power cord around cord wraps on side of vacuum cleaner.
4. Clip molded plug to power cord to secure.



Tip:

Your BISSELL PowerForce features a Quick Release™ Cord Wrap. To remove the power cord quickly and easily, rotate the upper cord wrap toward floor, and slip power cord from upper and lower cord wrap.



WARNING:

To reduce the risk of electric shock, turn power switch OFF and disconnect polarized plug from electrical outlet before performing maintenance or troubleshooting checks.

Maintenance and care

To maintain maximum performance from your BISSELL PowerForce, perform these simple maintenance checks.

Bag change indicator (select models)

Select BISSELL PowerForce models are equipped with a bag change indicator. This indicator monitors the airflow through the dust bag and turns red to indicate a reduction or blockage. The following conditions may cause it to become completely red.

1. Dust bag is full; change the bag.
2. Dust bag is clogged with fine materials; change the bag.
3. Clog in the vacuum; clear the clog.

Tip:

Vacuuming new carpet or fine powders may clog the dust bag causing the bag change indicator to turn red even though the dust bag does not appear to be full. Change the dust bag to restore maximum performance.



Bag Change Indicator

Maintenance and care

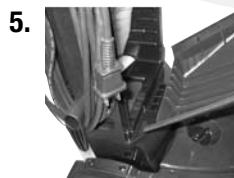
Replace dust bag

Never reuse a dust bag.

Use only **BISSELL Style 7 Dust Bags** in your **BISSELL PowerForce Style 7 EnviroFresh Micro Filtration Dust Bags (# 30861) Style 7 Dust Bags (# 32120)**.

1. Unplug cleaner from electrical outlet.
2. Pull the bag door outward to open. Set bag door aside.
3. Grasp dust bag collar, and pull collar from connector tube. Discard used dust bag.
4. Grasp new dust bag collar and push firmly onto connector tube. Tuck in dust bag.
5. Replace bag door by placing tab on bottom of door into opening as shown. Press top of door to snap securely shut.

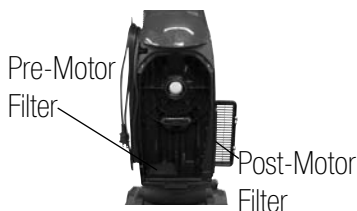
NOTE: Vacuum will not suction while the bag door is removed.



Cleaning pre-motor & post-motor filters

Use only **BISSELL Replacement Filters** in your **BISSELL PowerForce**.

1. Unplug cleaner from electrical outlet.
2. The pre-motor filter, located in the bottom of the bag compartment, protects the motor from dirt particles. If filter becomes dirty, lift out filter and clean.
3. The post-motor filter assists in the filtration process to return clean air to the room. To remove this filter, open the door on the side of the cleaner. Grasp filter and pull it straight out.
4. The filters may be hand washed in cold water with mild detergent, then air dried.
5. Reposition filters when completely dry.



WARNING:

Do not operate cleaner with damp or wet filters or without all filters in place.



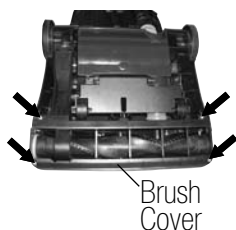
WARNING:

To reduce the risk of injury from moving parts, turn off vacuum cleaner and disconnect Power Plug from electrical outlet.

Check rotating floor brush and drive belt

You should check your vacuum cleaner's rotating floor brush and drive belt regularly for wear or damage. You should also clean the brush and brush ends of string, hair, and carpet fibers. These can wrap around the brush and hamper its ability to effectively clean your carpet. Also remove any debris that has accumulated under the brush cover.

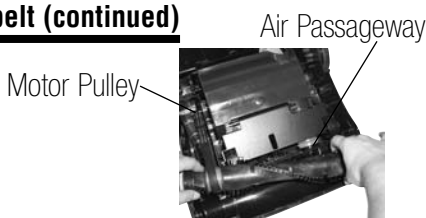
1. Unplug cleaner from electrical outlet.
2. Place handle in low position and turn vacuum cleaner over so bottom side is up.
3. Remove the four screws as shown with a Phillips head screwdriver. Lift the brush cover off.
4. Grasp rotating floor brush at both ends and lift.



Maintenance and care

Check rotating floor brush and drive belt (continued)

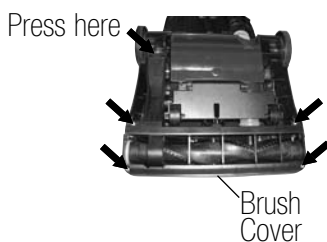
1. Clean strings, hair and other debris from rotating floor brush, paying particular attention to brush ends.
2. Clean strings, hair and other debris from motor pulley and drive belt areas.
3. Check drive belt carefully for wear, cuts or stressed areas. Replace if worn.
4. Check air passageway for obstructions. Remove debris from this area.



Replace drive belt

Use only **BISSELL Style 7 Replacement Belts (#32074)** in your **BISSELL PowerForce**.

1. Unplug cleaner from electrical outlet.
2. With rotating floor brush removed from vacuum cleaner (Steps 1-4 of Check rotating floor brush and drive belt), grasp old drive belt and remove from motor pulley. Discard old drive belt.
3. Place new drive belt over motor pulley and stretch other end over rotating floor brush in the space between the bristles.
4. Place ends of rotating floor brush down into slots on sides as shown.
5. Turn rotating floor brush by hand several times in direction of motor pulley. If properly installed, drive belt will center itself.
6. Reposition brush cover and four screws. Tighten screws securely. Make sure end of brush cover is snapped into place.



Replace light bulb (select models)

Select models are equipped with a headlight. Use only **BISSELL Replacement Bulbs** in your **BISSELL PowerForce**.

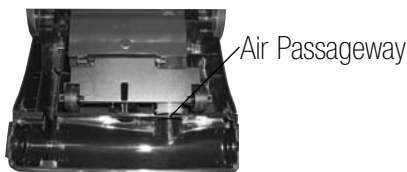
1. Unplug cleaner from electrical outlet.
2. Insert a flat screwdriver or coin into the slot on the right of the lens and gently push inner latch to the left as shown to remove the lens.
3. Remove the bulb from the socket by grasping bulb and pulling straight out. Install the new bulb by pushing it gently into the socket until the bulb snaps into place.
4. Reposition lens, by inserting tab on left side and then pushing the right side back into place.

Maintenance and care

Clearing clog

The Hose on the back of the vacuum cleaner that carries the dirt from the powerfoot to the dust bag can sometimes become clogged. If you notice a change in the sound of the vacuum motor, check for clogs.

1. Unplug cleaner from electrical outlet.
2. Pull the bag door outward to open and set aside. Remove the dust bag to check the suction Inlet for a clog.
3. Grasp the quick reach handle and lift up to separate from the suction intake opening. Check for a clog in the base, the wand or the hose.
4. Release the hose from the vacuum by turning to the right. Straighten the hose and unclog with a long, narrow object.
5. If the clog persists, turn the vacuum cleaner OFF and unplug it. Remove the brush cover. Check the air passageway for obstructions. Remove debris from this area. Reposition brush cover and four screws. Tighten screws securely. Make sure end of brush cover is snapped into place.



 **WARNING:**
To reduce the risk of electric shock, turn power OFF and disconnect polarized plug from electrical outlet before performing maintenance or troubleshooting.

Troubleshooting

Vacuum cleaner won't turn

Possible causes

1. Power cord not firmly plugged in
2. Blown fuse/tripped breaker

Vacuum cleaner won't pick up dirt

Possible causes

1. Incorrect height adjustment
2. Hose not attached to suction opening
3. Twist 'n Snap hose not securely attached
4. Dust bag is full
5. Rotating floor brush bristles worn
6. Rotating floor brush jammed
7. Clog in vacuum

Remedies

1. Check electrical plug
2. Check/replace fuse or reset breaker.

Remedies

1. Adjust powerfoot to correct height setting
2. Grasp hose grip and firmly push onto the base
3. Make sure Twist 'n Snap hose is snapped into position
4. Replace with new dust bag
5. Replace brush
6. Remove brush and clean debris from brush ends
7. Follow instructions for clearing clogs

Troubleshooting

Tools won't pick up dirt

Possible causes

1. Crack or hole in hose
2. Vacuum hose, wand or tools clogged

Remedies

1. Replace hose
2. Follow instructions for cleaning clogs

Vacuum cleaner difficult to push

Possible causes

1. Incorrect height adjustment
2. Rotating floor brush not rotating

Remedies

1. Turn floor surface selector to next highest setting
2. Check drive belt and brush

Other maintenance or service not included in the manual should be performed by an authorized service representative.

Thank you for selecting a BISSELL product.

If you should happen to need assistance during assembly or operation, call 1 800 263-2535.

Please do not return this product to the store.

**For any questions or concerns, BISSELL is happy to be of service.
Contact us directly at 1 800 263-2535.**

Replacement Parts - BISSELL PowerForce

Replacement parts are available through BISSELL Consumer Services, an authorized BISSELL Service Centre or by visiting our website. Below is a list of common replacement parts. While not all of these parts may have come with your specific model, they are available for purchase if desired.

Item	Part No.	Part Name	1/2	3	4
1	30861	Style 7 EnviroFresh Micro Filtration Dust Bag (3-Pack)			
2	32120	Style 7 Dust Bags (3-Pack)			
3	32074	Style 7 Drive Belt (2-Pack)			
4	203-1297	Light Bulb (select models only)			
5	203-1056	Crevice Tool		6	
6	203-1059	Combination Upholstery / Dusting Brush			7
7	203-1068	Extension Wand			
8	203-1127	Twist n' Snap Vacuum		Hose	
9	203-1129	Hose Collar			10
10	203-5624	Brush Roll			
11	203-5576	Pre-Motor Filter		12	
12	203-1009	Style 7 Post-Motor Filter			

BISSELL Consumer Services

For information about repairs or replacement parts, or questions about your warranty, call or write:

BISSELL Consumer Services

1-800-263-2535

Monday - Friday 8 a.m. — 10 p.m. ET

Saturday 9 a.m. — 8 p.m. ET

Or visit the BISSELL website

www.bissell.ca

BISSELL Canada Corporation

Box 1003

Niagara Falls, ON L2E 6W2

ATTN: Consumer Services

When contacting BISSELL, have model number of unit available.

Please record your Model Number: _____

Please record your Purchase Date: _____

NOTE: Please keep your original sales receipt. It is your warranty.

Warranty

If you need additional instruction regarding this warranty or have questions regarding what it may cover, please contact BISSELL Consumer Services by E-mail, telephone, or regular mail as described below.

Limited One Year Warranty

Subject to the *EXCEPTIONS AND EXCLUSIONS identified below, upon receipt of the product BISSELL Canada Corporation will repair or replace (with new or remanufactured components or products), at BISSELL's option, free of charge from the date of purchase by the original purchaser, for one year any defective or malfunctioning part.

See information below on "If your BISSELL product should require service".

This warranty applies to product used for personal, and not commercial or rental service. This warranty does not apply to fans or routine maintenance components such as filters, belts, or brushes. Damage or malfunction caused by negligence, abuse, neglect, unauthorized repair, or any other use not in accordance with the User's Guide is not covered.

If your BISSELL product should require service:

Call BISSELL Consumer Services at the number listed below or visit the BISSELL website – **www.bissell.ca** to locate a BISSELL Authorized Service Centre in your area. If there are no authorized BISSELL Service Centres in your area, a BISSELL Representative at **canada.custhelp@bissell.ca** or at the phone number below will issue you a Return Authorization Number and a pre-paid mailing label to return the unit to BISSELL for warranty repair.

The machine should be returned with a photocopy of your proof of purchase. (Your dated sales receipt is your warranty – do not send original.) If you need information about repairs or replacement parts, or if you have questions about your warranty, contact BISSELL Consumer Services.

Website or E-mail:

www.bissell.ca

Use the "Customer Services" tab.

Or Call:

BISSELL Consumer Services

1-800-263-2535

Monday - Friday 8 a.m. - 10 p.m. ET

Saturday 9 a.m. - 8 p.m. ET

Or write:

BISSELL Canada Corporation

Box 1003

Niagara Falls, ON L2E 6W2

ATTN: Consumer Services

BISSELL CANADA CORPORATION IS NOT LIABLE FOR INCIDENTAL OR CONSEQUENTIAL DAMAGES OF ANY NATURE ASSOCIATED WITH THE USE OF THIS PRODUCT. BISSELL'S LIABILITY WILL NOT EXCEED THE PURCHASE PRICE OF THE PRODUCT.

*EXCEPTIONS AND EXCLUSIONS FROM THE TERMS OF THE LIMITED WARRANTY

THIS WARRANTY IS EXCLUSIVE AND IN LIEU OF ANY OTHER WARRANTIES EITHER ORAL OR WRITTEN. ANY IMPLIED WARRANTIES WHICH MAY ARISE BY OPERATION OF LAW, INCLUDING THE IMPLIED WARRANTIES OF MERCHANTABILITY AND FITNESS FOR A PARTICULAR PURPOSE, ARE LIMITED TO THE ONE YEAR DURATION FROM THE DATE OF PURCHASE AS DESCRIBED ABOVE.

NOTE: Please keep your original sales receipt, it is your warranty.



©2008 BISSELL Homecare, Inc.
BISSELL Canada Corporation
Niagara Falls, ON L2E 6W2
All rights reserved. Printed in China
Part Number 110-4090
Rev 11/08
Visit our website at:
www.bissell.ca

1 800 263-2535

