

Earn BISSELL Rewards!

Register your product today!

See details on back page

POWERforce® HELIX™

USER'S GUIDE

12B1, 1240, 68C7 SERIES

POWERforce® HELIX™ turbo

- 2 Thank You
- 3 Safety Instructions
- 4-5 Product View
- 6 Assembly
- 7-8 Operations
- 9-12 Maintenance and Care
- 13 Troubleshooting
- 14 Replacement Parts
- 15 Warranty
- 16 Product Registration
- 16 Consumer Care



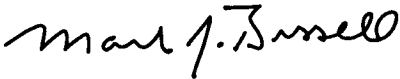
Thanks for buying a BISSELL vacuum

We're glad you purchased a BISSELL vacuum. Everything we know about floor care went into the design and construction of this powerful, high-tech home vacuuming system.

Your BISSELL vacuum is well made, and we back it with a limited one year warranty. We also stand behind it with a knowledgeable, dedicated Consumer Care Department, so, should you ever have a problem, you'll receive fast, considerate assistance.

My great-grandfather invented the floor sweeper in 1876. Today, BISSELL is a global leader in the design, manufacture, and service of high quality homecare products like your BISSELL PowerForce Bagless vacuum.

Thanks again, from all of us at BISSELL.



Mark J. Bissell
Chairman, President & CEO

IMPORTANT SAFETY INSTRUCTIONS

When using an electrical appliance, basic precautions should be observed, including the following:

READ ALL INSTRUCTIONS BEFORE USING YOUR UPRIGHT VACUUM.

Always connect to a polarized outlet (left slot is wider than right). Unplug from outlet when not in use and before conducting maintenance.

WARNING: To reduce the risk of fire, electric shock, or injury:

- Do not modify the polarized plug to fit a non-polarized outlet or extension cord.
- Do not leave vacuum cleaner unattended when it is plugged in.
- Unplug from outlet when not in use and before servicing.
- Do not use outdoors or on wet surfaces.
- Do not allow children to operate vacuum cleaner or use as a toy.
- Close attention is necessary when used by or near children.
- Do not use for any purpose other than described in this User's Guide.
- Use only manufacturer's recommended attachments.
- Do not use with damaged cord or plug.
- If appliance is not working as it should, has been dropped, damaged, left outdoors, or dropped into water, have it repaired at an authorized service center.
- Do not pull or carry by cord, use cord as a handle, close a door on cord, or pull cord around sharp edges or corners. Do not run appliance over cord. Keep cord away from heated surfaces.
- Do not unplug by pulling on cord. To unplug, grasp the plug, not the cord.
- Do not handle vacuum cleaner or plug with wet hands.
- Do not put any object into openings. Do not use with any opening blocked; keep openings free of dust, lint, hair, and anything that may reduce air flow.

- Keep hair, loose clothing, fingers, and all parts of body away from openings and moving parts.
- Turn off all controls before plugging or unplugging vacuum cleaner.
- Use extra care when cleaning stairs.
- Do not pick up flammable materials (lighter fluid, gasoline, kerosene, etc.) or use in the presence of explosive liquids or vapors.
- Do not pick up toxic material (chlorine bleach, ammonia, drain cleaner, etc.).
- Do not use vacuum cleaner in an enclosed space filled with vapors given off by oil base paint, paint thinner, some moth proofing substances, flammable dust, or other explosive or toxic vapors.
- Do not pick up hard or sharp objects such as glass, nails, screws, coins, etc.
- Do not pick up anything that is burning or smoking, such as cigarettes, matches, or hot ashes.
- Do not use without filters in place.
- Use only on dry, indoor surfaces.
- Keep appliance on a level surface.
- Do not carry the vacuum cleaner while it is running.
- Unplug before connecting TurboBrush® Tool.

SAVE THESE INSTRUCTIONS FOR FUTURE USE

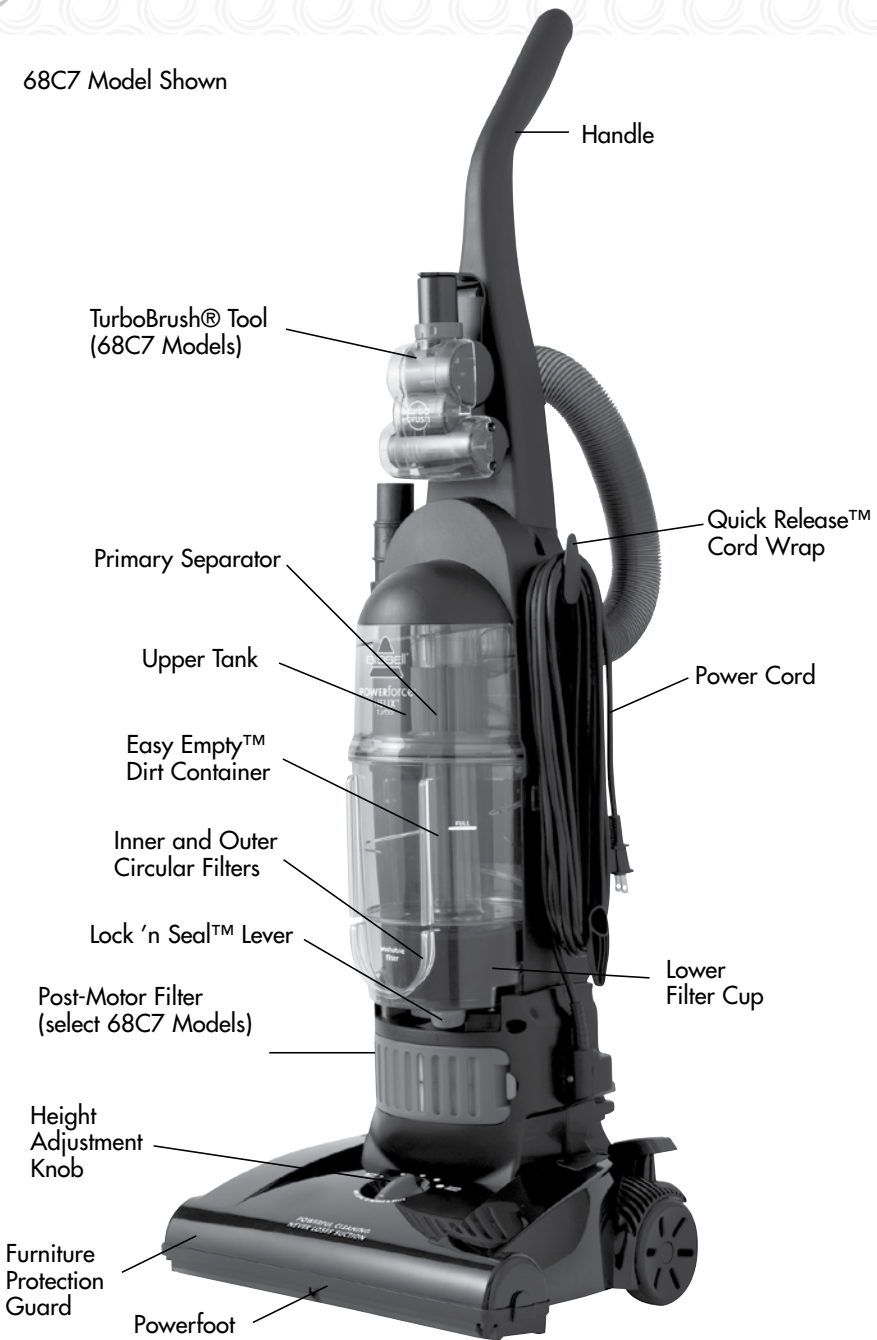
THIS APPLIANCE HAS A POLARIZED PLUG.

To reduce the risk of electric shock, this appliance has a polarized plug (one blade is wider than the other). This plug will fit in a polarized outlet only one way. If the plug does not fit fully in the outlet, reverse the plug. If it still does not fit, contact a qualified electrician to install a proper outlet. Do not change the plug in any way.

This model is for household use only.

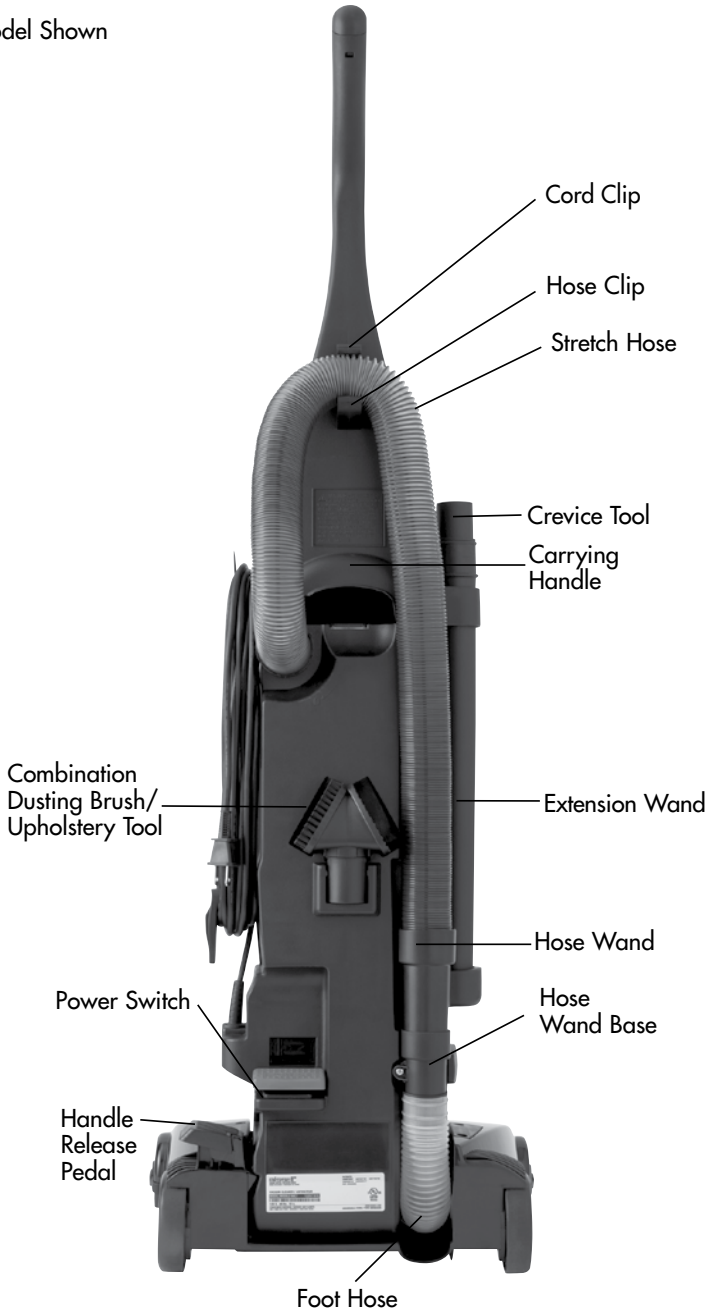
Product View

68C7 Model Shown



Product View

68C7 Model Shown



Attach handle to vacuum

1. Locate handle and remove screw packet taped to the base of the handle.
2. Stand the vacuum upright and place the base of the handle firmly into the grooves at the top of the vacuum body.
3. Insert the two (2) screws into the existing holes on each side and tighten securely.

Attach vacuum hose and tools

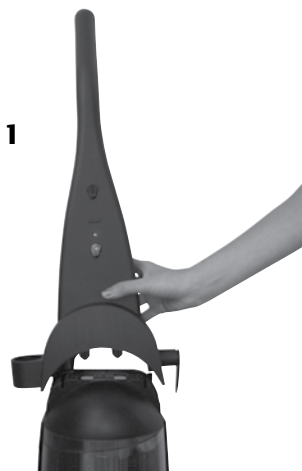
1. Line up tabs on the base of the Twist 'n Snap™ hose with the corresponding notches on the hose collar. Turn the hose to the right to lock into place.
2. Grasp the Quick Reach handle and slide the end of the hose into the hose wand base. Snap the hose into the upper hose clip on handle.
3. Slide the extension wand and crevice tool together into storage clip.
4. Snap the combination tool into the storage clip.

Select models only:

5. The TurboBrush® Tool bracket slides into the front of the handle. Attach the bracket by aligning the pegs with the holes on the handle and pulling down until it locks into place.
6. Place the TurboBrush® Tool in the bracket by aligning the bottom of bracket with the opening of the brush roll and snap the TurboBrush® Tool into place.

WARNING:

Plastic packaging can be dangerous. To avoid danger of suffocation, keep away from babies and children.



Tip:

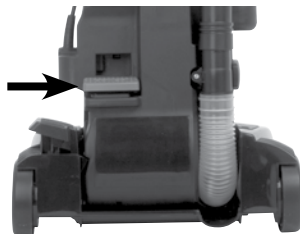
Hold onto the plastic hose collar while installing. It may be easier to lock the hose into place when the hose handle is not yet inserted into the base of the unit.



Operations

Power Switch

The red power switch is located on the bottom left of the back side of the unit. Press gently with foot to turn power ON and OFF.



Power Cord

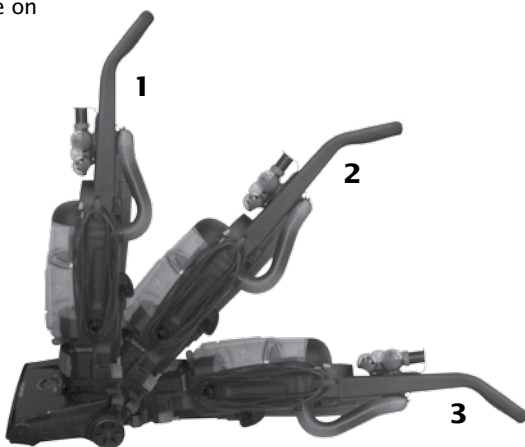
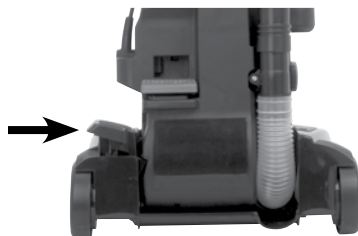
When you are finished vacuuming, return to upright position and store power cord.

1. Turn vacuum OFF.
2. Unplug power cord by grasping the polarized plug (NOT the cord) and disconnect from outlet.
3. Loop power cord around cord wraps on side of vacuum and clip molded plug to power cord to secure.

Handle Positions

The handle release pedal is located just under the red power switch on the bottom left of the back of the vacuum. Press the black handle release pedal with foot to place vacuum into one of three cleaning positions:

1. **Upright:** for storage, transporting, and above floor cleaning with tools.
 - Transport in upright position by tilting vacuum on rear wheels and push forward or use carrying handle on back of handle base.
2. **Normal Cleaning:** Press handle release pedal once for most household floor cleaning.
3. **Low Cleaning:** From normal cleaning position, press handle release pedal once for cleaning under low furniture.



Height Adjustments (select models)

Turn knob on Powerfoot to adjust to one of 5 Height Adjustments. If knob is difficult to turn, tilt the cleaner back slightly to take the weight off the foot while turning.

Lowest Setting: For low pile carpet and barefloors.

Medium Setting: For medium pile carpet.

Highest Setting: For high pile and most shag carpet. Adjust to high setting if difficult to push.

Tools

Attach desired tool to hose cleaning above floor surfaces.

1. Remove Hose: With vacuum in upright position, grasp the Quick Reach Handle and lift hose wand to separate from suction intake opening.
2. Attach tools by firmly pushing onto vacuum hose or extension wand.
 - A. Combination dusting brush/ upholstery tool:** Rotate for desired use. Use brush side to dust, blinds, books, lamps, shelves, and baseboards. Use upholstery side to for furniture, drapes and, fabrics.
 - B. Crevice Tool:** Use in tight narrow spaces.
 - C. Extension Wand:** Use with desired attachment for longer reach.
 - D. TurboBrush® Tool (Select Models):** Use rotating brush action for small flat areas such as stairs, and cushions. Press down gently and pull towards you in a raking motion. Too much pressure will cause the brush to stop rotating.



1



2

A



B



C



D

Maintenance and Care

To maximize performance and extend life of your vacuum it is very important to perform the following maintenance steps.

Empty Easy Empty™ Dirt Container

Empty when dirt reaches the “Full” line on the container

1. Turn power OFF. Unplug power cord from electrical outlet.
2. Slide Lock 'n Seal lever to “Unlock” position.
3. Grasp dirt cup portion handle and pull straight out to remove from vacuum and empty.
4. Place dirt container back in the vacuum and slide lever to lock position.

NOTE: The dirt container may be washed in warm water with mild detergent. Make sure it is completely dry before replacing.



Cleaning Inner & Outer Circular Filter

To maintain suction and cleaning performance, check and clean filters regularly

1. Turn power OFF. Unplug vacuum cord from electrical outlet
2. Remove dirt container. Grasp the filter located at the bottom of the dirt container, lift and pull straight out. **DO NOT PULL CIRCULAR FOAM FILTER OUT OF THE FILTER CUP WHILE IT IS STILL IN THE VACUUM.**
3. Grasp the plastic tab on the top of the circular foam filters. Twist to unlock and pull out.
4. Separate the outer foam filter and inner pleated circular filter. Wash each individually by hand in warm water. Mild detergent may be used if desired. Rinse well, let filters completely air dry before replacing in filter cup.
5. Wash filter cup in warm water with mild detergent. Completely air dry before reassembling with filters. **DO NOT PUT IN DISHWASHER.**
6. The upper tank and louvers can be wiped clean with a damp cloth. Reach underneath the upper tank and turn the rim of the louvers to the left to unlock. Pull straight down and remove. Make sure all parts are completely dry before replacing.
7. To replace louvers, position top of louvers inside clear center cavity and turn toward the right to lock tabs into place.

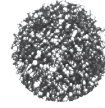
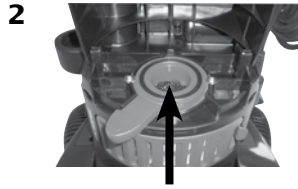


Maintenance and Care

Cleaning the Pre-Motor Filter

The pre-motor filter protects the motor from debris.

1. Turn power OFF. Unplug vacuum cord from electrical outlet.
2. The pre motor filter is located underneath the filter cup in the center of the round part of the Lock 'n Seal lever.
3. Remove the small round filter and any debris on top of it. Rinse under warm water; air dry completely before replacing.



pre-motor filter

Replacing the Post-Motor Filter (select 68C7 model series only)

The post-motor filter assists in the filtration process to return clean air to the room.

1. Turn power OFF. Unplug vacuum cord from electrical outlet.
2. Locate filter behind the filter door on the front of the vacuum. Remove and replace when filter becomes dirty. The white, pleated post-motor filter is NOT washable.
3. Replace the door by inserting the tabs on the left side and snapping the right side into place.

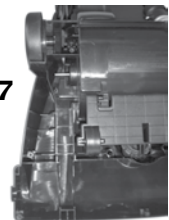
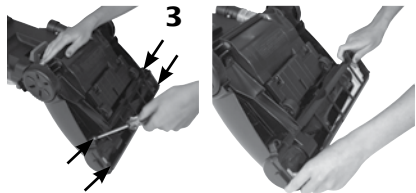


post-motor filter

Checking rotating floor brush and drive belt

Check your vacuum's rotating floor brush and drive belt regularly for wear or damage.

1. Turn power OFF. Unplug vacuum cord from electrical outlet.
2. Place handle in low position and turn vacuum over so bottom side is facing up.
3. Using a screwdriver, remove the four screws and lift brush cover off.
4. Grasp rotating floor brush at both ends and lift.
5. Clean strings, hair and other debris from rotating floor brush, motor pulley, and drive belt areas.
6. Check drive belt for wear, cuts, or stressed areas.
7. Check air passageway for obstructions. Remove debris from this area.
8. Reposition brush cover and fasten four screws back into place.



Maintenance and Care

Replace drive belt

1. Turn power OFF. Unplug vacuum cord from electrical outlet.
2. With rotating brush removed (steps 1-4 of Check rotating floor brush and drive belt), grasp old drive belt and remove from motor pulley. Discard old drive belt.
3. Place new drive belt over motor pulley and stretch other end over rotating floor brush in the space between the bristles. Place ends of rotating floor brush down into slots.
4. Turn rotating floor brush by hand in the direction of the motor pulley. If properly installed, drive belt will center itself on rotating brush.
5. Reposition brush cover and fasten four screws back into place.



Clearing a Clog

Low suction or poor pickup may be due to a clog in the vacuum. If you notice a change in the sound of the vacuum motor, check for clogs.

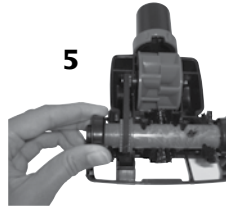
1. Turn power OFF. Unplug vacuum cord from electrical outlet.
2. Empty Dirt Container.
3. Check upper tank and suction inlet for clogs.
4. Grasp Quick Reach handle and remove hose wand from base to check for clogs in the base, the wand, and the hose.
5. Remove the screw attaching the hose wand base to the vacuum. Straighten the hose wand base and unclog, with long, narrow object such as broom stick.
6. If the clog persists, follow steps for checking rotating floor brush on page 10 and inspect the air passageway for obstructions.



Maintenance and Care

TurboBrush® Tool **Maintenance** select models only

1. Turn power OFF. Unplug vacuum cord from electrical outlet.
2. Remove tool from hose or from clip on vacuum handle.
3. Twist collar so opening is at the top and lift clear cover to remove.
4. Remove brush from belt and clean debris.
5. Replace brush inside belt and place ends into slots on the sides.
6. Reposition top cover making sure to line up inside tab at the front with the opening on the cover. Twist collar until opening is at the bottom to lock into place.



WARNING:

To reduce the risk of electric shock, turn power OFF and disconnect polarized plug from electrical outlet before performing maintenance or troubleshooting.

Vacuum cleaner won't turn on...

Possible causes

Remedies

Power cord not plugged in

Check electrical plug

Blown fuse/tripped breaker in home

Check/replace fuse or reset breaker

Vacuum cleaner doesn't have good suction...

Possible causes

Remedies

Hose not properly positioned

Make sure hose is fully connected to base and body. Be sure to hold onto plastic hose collar while connecting hose.

Dirt tank not installed properly

Check assembly of upper and lower portions, correctly position and secure into place

Dirt tank is full

Empty dirt tank

Clog in cleaner

Follow instructions on pg. 10 and 11 for clearing clogs

Filters are dirty

Check and clean filter

Hose not properly attached

Make sure hose collar is properly installed

Vacuum is not suctioning or blowing

Make sure hose collar is properly installed

Other maintenance or service not included in the manual should be performed by an authorized service representative.

Thank you for selecting a BISSELL brand product.

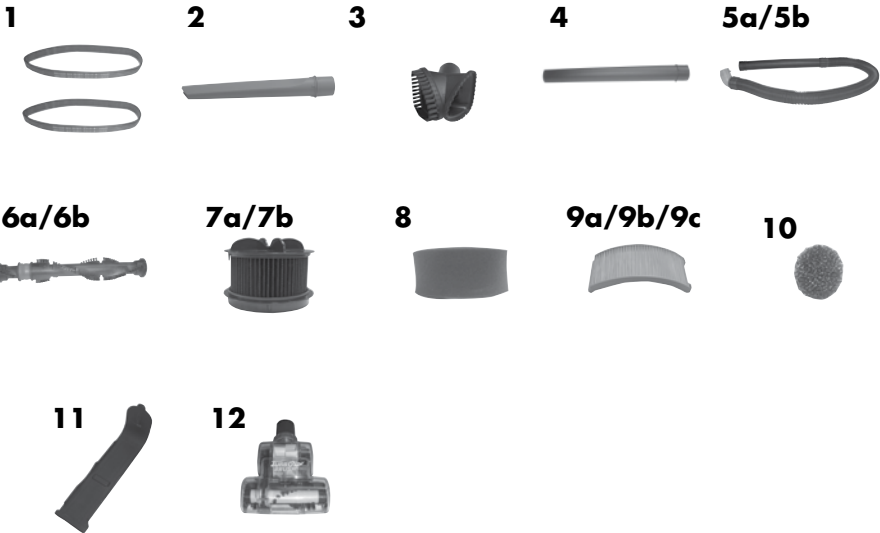
If you should happen to need assistance during assembly or operation, call BISSELL Consumer Service at 1-800-237-7691.

Please do not return this product to the store.

For any questions or concerns, BISSELL is happy to be of service. Contact us directly at 1-800-237-7691.

Replacement parts - BISSELL Vacuum

Item	Part No.	Part Name
1	32074	Style 7/9/10/12 Drive Belt (2-Pack)
2	203-1056	Crevice Tool
3	203-1059	Combination Dusting Brush / Upholstery Tool
4	203-1068	Extension Wand
5a	203-8074	Hose Assembly (12B1 Series)
5b	203-8049	Hose Assembly (68C7 Series)
6a	203-8072	Brush Roll Assembly (12B1 Series)
6b	203-8045	Brush Roll Assembly (68C7 Series)
7a	203-7913	Pleated Circular Filter
7b	6046	Febreze Inner Circular Filter
8	203-1192	Foam Filter
9a	203-8037	White Pleated Post-Motor Filter (68C7 series)
9b	17T6	Febreze® Style 12 Filter (68C7 series)
9c	1602290	Post Motor Filter, Allergen, Style 12
10	203-1215	Pre-Motor Filter
11	203-7170	TurboBrush® Bracket
12	203-7171	TurboBrush® Tool



Febreze® and related trademarks are owned by The Procter & Gamble Company, Cincinnati, Ohio, and used under licensed by BISSELL Homecare, Inc.

Warranty - BISSELL Vacuum

This warranty gives you specific legal rights, and you may also have other rights which may vary from state to state. If you need additional instruction regarding this warranty or have questions regarding what it may cover, please contact BISSELL Consumer Care by E-mail, telephone, or regular mail as described below.

Limited One Year Warranty

Subject to the ***EXCEPTIONS AND EXCLUSIONS** identified below, upon receipt of the product BISSELL will repair or replace (with new or remanufactured components or products), at BISSELL's option, free of charge from the date of purchase by the original purchaser, for one year any defective or malfunctioning part.

See information below on "If your BISSELL product should require service".

This warranty applies to product used for personal, and not commercial or rental service. This warranty does not apply to fans or routine maintenance components such as filters, belts, or brushes. Damage or malfunction caused by negligence, abuse, neglect, unauthorized repair, or any other use not in accordance with the User's Guide is not covered.

If your BISSELL product should require service:

Contact BISSELL Consumer Care to locate a BISSELL Authorized Service Center in your area.

If you need information about repairs or replacement parts, or if you have questions about your warranty, contact BISSELL Consumer Care.

Website or E-mail:

www.bissell.com

Use the "Customer Support" tab.

Or Call:

BISSELL Consumer Care

1-800-237-7691

Monday - Friday 8 am - 10 pm ET

Saturday 9 am - 8 pm ET

Sunday 10 am - 7 pm ET

Or Write:

BISSELL Homecare, Inc.

PO Box 3606

Grand Rapids, MI 49501

ATTN: Consumer Care

BISSELL IS NOT LIABLE FOR INCIDENTAL OR CONSEQUENTIAL DAMAGES OF ANY NATURE ASSOCIATED WITH THE USE OF THIS PRODUCT. BISSELL'S LIABILITY WILL NOT EXCEED THE PURCHASE PRICE OF THE PRODUCT.

Some states do not allow the exclusion or limitation of incidental or consequential damages, so the above limitation or exclusion may not apply to you.

***EXCEPTIONS AND EXCLUSIONS FROM THE TERMS OF THE LIMITED WARRANTY**

THIS WARRANTY IS EXCLUSIVE AND IN LIEU OF ANY OTHER WARRANTIES EITHER ORAL OR WRITTEN. ANY IMPLIED WARRANTIES WHICH MAY ARISE BY OPERATION OF LAW, INCLUDING THE IMPLIED WARRANTIES OF MERCHANTABILITY AND FITNESS FOR A PARTICULAR PURPOSE, ARE LIMITED TO THE ONE YEAR DURATION FROM THE DATE OF PURCHASE AS DESCRIBED ABOVE.

Some states do not allow limitations on how long an implied warranty last so the above limitation may not apply to you.



Don't forget to register your product!

Registering is quick, easy and offers you benefits over the lifetime of your product. You'll receive:

BISSELL Rewards Points

Automatically earn points for discounts and free shipping on future purchases.

Faster Service

Supplying your information now saves you time should you need to contact us with questions regarding your product.

Product Support Reminders and Alerts

We'll contact you with any important product maintenance reminders and alerts.

Special Promotions

Optional: Register your email to receive notice of offers, contests, cleaning tips and more!

Visit www.bissell.com/registration now!



BISSELL consumer care

For information about repairs or replacement parts, or questions about your warranty, call:

BISSELL Consumer Care
1-800-237-7691

Monday - Friday 8 am - 10 pm ET

Saturday 9 am - 8 pm ET

Sunday 10 am - 7 pm ET

Or write:

BISSELL Homecare, Inc.

PO Box 3606

Grand Rapids MI 49501

ATTN: Consumer Care

Or visit the BISSELL website - **www.bissell.com**

When contacting BISSELL, have model number of cleaner available.

Please record your Model Number: _____

Please record your Purchase Date: _____

NOTE: Please keep your original sales receipt. It provides proof of purchase date in the event of a warranty claim. See Warranty on page 15 for details.



©2013 BISSELL Homecare, Inc
Grand Rapids, Michigan
All rights reserved. Printed in China
Part Number 160-3163
Rev 09/13
Visit our website at:
www.bissell.com

