

Item No : 930-000786-00  
 Version: V05  
 Item Name: Pro drummer  
 Language: English  
 Release Date: May 22, 2008  
 PKG size: 355(L)mm x 200(H)mm  
 Color: 1C+1C

**miJam Pro**  
*ready to rock*  
**Air Drummer**



Agers 8+

**Included in the package**

- 2 Drumsticks    1 Foot Pedal    1 Speaker unit  
 1 Instruction sheet



**Power Source**

- Battery Required (battery not included)  
 • 2 x AAA batteries for each drumstick  
 • 2 x AA batteries for foot pedal  
 • 4 x AA batteries for speaker unit

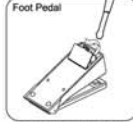
**Battery Installation**

**ADDITIONAL INFORMATION ON BATTERY INSTALLATION**

**Bottom View**



- Following the arrows, use a small cross-head screwdriver to open the cover.
- Insert 2 AAA size batteries as shown.
- Close the battery cover and tighten the screw to secure it.



- Locate the battery cover at the bottom of the foot pedal.
- Use a small size tool/screwdriver to remove the battery cover.
- Insert 2 AA size batteries as shown.
- Replace the battery cover.

**Open Back Cover**



- Remove the back cover of the speaker unit.
- Locate the battery cover on the back of the speaker unit.
- Use a small size tool/screwdriver to remove the battery cover.
- Insert 4 AA size batteries as shown.
- Replace the battery cover.

**Drumsticks**

USE TWO 1.5 VOLT BATTERIES, TYPE: CARBON ZINC, ALKALINE SIZE: (R03, MN300, AAA, LR03, UM-4) BATTERIES NOT INCLUDED.

- DO NOT MIX NEW AND OLD BATTERIES.
- DO NOT MIX ALKALINE, CARBON ZINC OR RECHARGEABLE BATTERIES.
- BATTERIES TO BE INSTALLED BY ADULT ONLY.
- NON-RECHARGEABLE BATTERIES ARE NOT TO BE RECHARGED.
- EXHAUSTED BATTERIES ARE TO BE REMOVED FROM THE TOYS.
- THE SUPPLY TERMINALS ARE NOT TO BE SHORT-CIRCUITED.

**Foot Pedal**

USE TWO 1.5 VOLT BATTERIES, TYPE: CARBON ZINC, ALKALINE SIZE: (R6, MN1500, AA, LR6, UM-3) BATTERIES NOT INCLUDED.

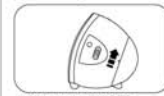
- BATTERIES ARE TO BE INSERTED WITH THE CORRECT POLARITY.
- ONLY BATTERIES OF THE SAME OR EQUIVALENT TYPE AS RECOMMENDED ARE TO BE USED.
- DO NOT DISPOSE OF THIS PRODUCT AND BATTERIES IN FIRE. BATTERIES MAY EXPLODE OR LEAK.
- RECHARGEABLE BATTERIES MUST BE REMOVED FROM THE TOY BEFORE CHARGING WHEREVER POSSIBLE.

**Speaker**

USE FOUR 1.5 VOLT BATTERIES, TYPE: CARBON ZINC, ALKALINE SIZE: (R6, MN1500, AA, LR6, UM-3) BATTERIES NOT INCLUDED.

- RECHARGEABLE BATTERIES SHOULD ONLY BE CHARGED UNDER ADULT SUPERVISION.
- REMOVE ALL BATTERIES WHEN YOU DO NOT USE THE TOY FOR A LONG PERIOD.
- LOW OR FLAT BATTERIES CAN CAUSE DEGRADATION IN THE SOUND QUALITY OF THIS PRODUCT. DISTORTED OR SLOW SOUND QUALITY CAN BE RESTORED BY REPLACING THE BATTERIES.

**Power On**



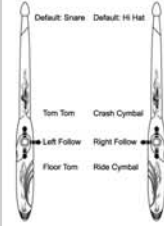
- Slide up the ON/OFF switch. Turn on the unit.



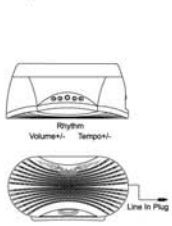
- While the unit is in sleep mode, press any key on the unit will wake up the unit.

**Product Features**

**Drumsticks**



**Speaker unit**



**Foot pedal**



To play the specific drum sound, hold the button specify below and swing.

**Left hand drumstick**

- Snare drum – without pressing any key
- Tom Tom – push button up
- Floor Tom – push button down

**Right hand drumstick**

- Hi Hat – without pressing any key
  - Crash Cymbal – push button up
  - Ride Cymbal – push button down
- Follow Keys**
- Use follow key when you want to run the same sound for both sticks. For e.g. To run Tom Tom sound on both sticks, push left hand drumstick button up to active Tom Tom sound and press right follow button.

**Rhythm**

- Total 6 different built-in rhythm available
- Press the "Rhythm" key once to activate the rhythm play. Press again to disable the play.
- Press once again to select next rhythm.

**Tempo**

- Press +/- tempo keys to change the tempo of the rhythm faster or slower

**Volume**

- Press +/- volume keys to increase or decrease the volume

**Line In Plug**

- Use the line in plug to connect to your music player so you can jam with your favorite music.

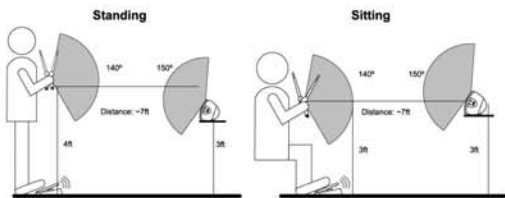
**Headphone Jack**

- Plug in your headphone to enjoy your playing alone.



**Set Up**

**Suggested set up position**

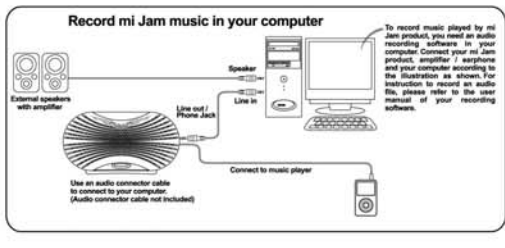


**Playing**

Playing the mi Jam Pro Drummer is just like playing a real drum kit, just move the mi Jam sticks in a drumming action to produce a drum kit sound. You can play the Snare drum sound using the left hand stick without pressing any keys. The right hand stick produces the closed hi-hat cymbal sound when used without a key being pressed. So just start drumming the sticks and select your desired effect using the stick keys. The mi Jam Pro Drummer can be played clean or with background effects by the use of the Rhythm key. Ensure you are familiar with all the keys as shown in the illustration and that your sticks and music device are connected as described. Then activate your music device and start playing your music. Set the tempo and volume on the Speaker Unit, select your drums and cymbals and jam away! mi Jam Pro Drummer can also be used to simulate a drum kit without using background effects or accompanying music, simply plug into your music device, turn it on and go for it.

**Hints and Tips**

We recommend you take a little time to get the feel of your mi Jam Pro Drummer and experiment with tempo adjustments to achieve your own sound and match it to your preferred music. You will very quickly become competent with their use and features and start sounding like a pro. The music you make can also be recorded via your computer or suitable recording device and shared or even Podcast.



**Start to Play**

After you turn on all the units and set the mi Jam Pro Drummer properly, you can start to play instantly. You may practice without rhythm or background music. And once you get used to it, you can jam with any music you like.



**Sleep Mode**

After the drumsticks been idle for around 3 minutes, the red light on the drumstick will flash for 30 seconds and the speaker unit will then go to sleep mode. However if the speaker is playing music from your music player, the speaker will not go to sleep mode.

SYMPTOM	CAUSE	SOLUTION
No Sound	• Batteries are inserted improperly. • Speaker is off. • Batteries are exhausted. • Volume level is completely turned down.	• Check and insert batteries again correctly. • Turn ON the speaker • Change new batteries • Turn up the volume level
Poor sound quality	• Out of range. • Frequency mismatch. • Batteries are weak	• Move the units closer and set up again as per suggested. • Change new batteries
Respond slowly	• Out of range. • Batteries are weak	• Move the units closer and set up again as per suggested. • Change new batteries.
Connected to music player but no sound	• Speaker is powered off • music player and speaker are not correctly connected	• Turn ON the speaker • Check if the line in plug is properly plugged into the "line out" or "headphone" Jack of the music player

This device complies with Part 15 of the FCC Rules. Operation is subject to the following two conditions: (1) This device may not cause harmful interference, and (2) This device must accept any interference received, including interference that may cause undesired operation. **Warning:** Changes or modifications to this unit not expressly approved by the party responsible for compliance could void the user's authority to operate the equipment.

**NOTE:** This equipment has been tested and found to comply with the limits for a Class B digital device, pursuant to Part 15 of the FCC Rules. These limits are designed to provide reasonable protection against harmful interference in a residential installation. This equipment generates, uses and can radiate radio frequency energy and, if not installed and used in accordance with the instructions, may cause harmful interference to radio communications. However, there is no guarantee that interference will not occur in a particular installation. If this equipment does cause harmful interference to radio or television reception, which can be determined by turning the equipment off and on, the user is encouraged to try to correct the interference by one or more of the following measures:  
 • Reorient or relocate the receiving antenna.  
 • Increase the separation between the equipment and receiver.  
 • Connect the equipment into an outlet on a circuit different from that to which the receiver is connected.  
 • Consult the dealer or an experienced radio / TV technician for help.

**NOTE:** Under the environment with radio frequency interference, this product may malfunction and back to normal without the interference.

**Warning**



iPod is a registered trademark of Apple Computer, Inc. The product sold in this package has not been endorsed or approved by Apple Computer, Inc. © 2007 Blue Box, all rights reserved. B2 logo, mi Jam are registered trademarks of Blue Box.