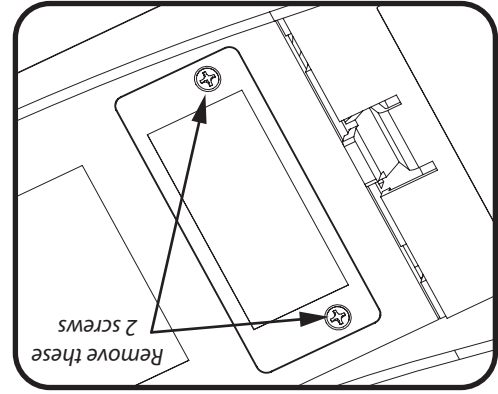


Instrucciones (Español)

- 1) Remove all of the batteries from your Rodent Terminator before you start.
- 2) Use a phillips screwdriver to remove the two screws holding the cover plate in place.



- 7) Plug the included AC adapter into the W.A.R. receiver and then plug into a wall outlet. You're done. Time to wage W.A.R.!

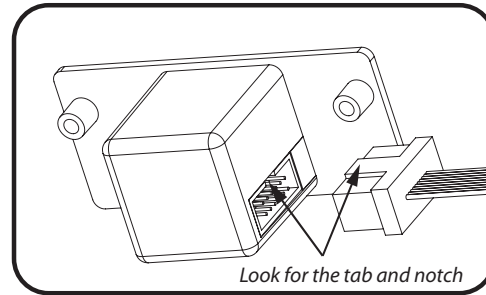
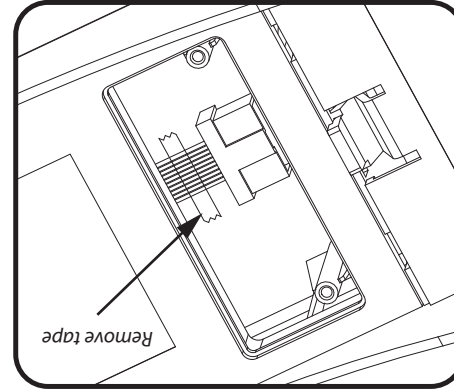
Bait and set your Rodent Terminator just like you normally do according to its instructions.

When the lid gets closed, the lights on both the transmitter and receiver will flash rapidly green and red. This lets you know that the transmitter and receiver successfully paired and are communicating. Now, both the trap **and** the W.A.R. receiver will display the same information about battery condition, trap readiness and kill alert.

You can now place your trap anywhere up to 100 feet away from the W.A.R. receiver and know what's happening with your trap at all times.

Note: Concrete walls or large obstructions can reduce the range of the W.A.R. unit. Pick a place as close to your Rodent Terminator as possible for best results. Also, pick a frequency not being used by another Rodent Terminator or other device to avoid interference.

- 4) Gently pull the cable out of the lid far enough to make the connection in the next step.
- 3) Find the ribbon cable inside the lid. If there is a piece of tape holding the cable in place remove it to free the cable.



- 5) Insert the cable connector into the W.A.R. transmitter. It will only insert if the tab and notch are aligned.

- 6) Gently tuck the cable back into the lid and put the W.A.R. transmitter in place with the screw holes aligned. Install the included screws.

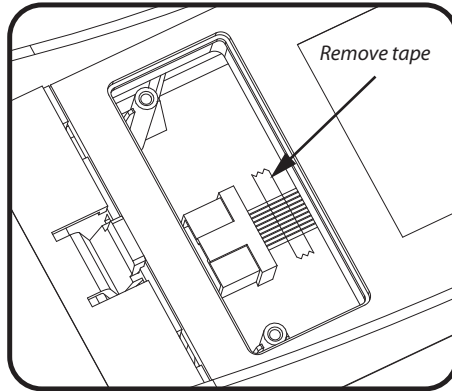
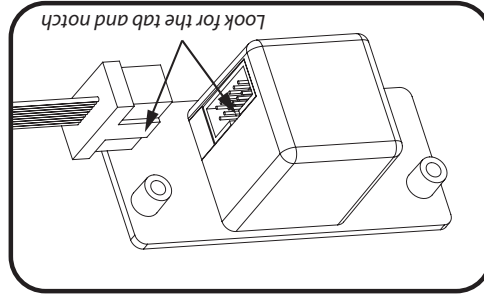
Adjust the transmitter switch to the same setting as the receiver.

1 or
2 or 3

Adjust the transmitter switch to 1 or 2 or 3 the same setting as the receiver.

- 6) Gently tuck the cable back into the lid and put the W.A.R. transmitter in place with the screw holes aligned. Install the included screws.

- 5) Insert the cable connector into the W.A.R. transmitter. It will only insert if the tab and notch are aligned.



- 3) Find the ribbon cable inside the lid. If there is a piece of tape holding the cable in place remove it to free the cable.

- 4) Gently pull the cable out of the lid far enough to make the connection in the next step.

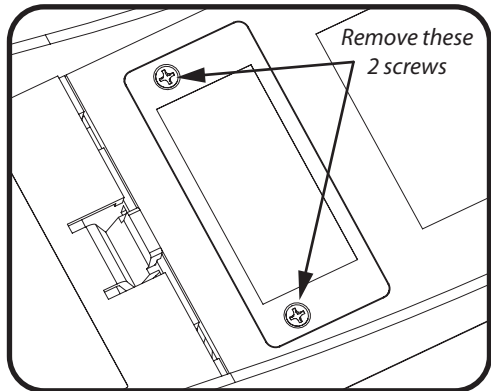
Bait and set your Rodent Terminator just like you normally do according to its instructions. When the lid gets closed, the lights on both the transmitter and receiver will flash rapidly green and red. This lets you know that the transmitter and receiver successfully paired and are communicating. Now, both the trap **and** the W.A.R. receiver will display the same information about battery condition, trap readiness and kill alert.

- 7) Plug the included AC adapter into the W.A.R. receiver and then plug into a wall outlet. You're done. Time to wage W.A.R.!

Instructions (Francés)

- 1) Remove all of the batteries from your Rodent Terminator before you start.

- 2) Use a phillips screwdriver to remove the two screws holding the cover plate in place.



You can now place your trap anywhere up to 100 feet away from the W.A.R. receiver and know what's happening with your trap at all times.

You can now place your trap anywhere up to 100 feet away from the W.A.R. receiver and know what's happening with your trap at all times.

Note: Concrete walls or large obstructions can reduce the range of the W.A.R. unit. Pick a place as close to your Rodent Terminator as possible for best results. Also, pick a frequency not being used by another Rodent Terminator or other device to avoid interference.

FCC ID: 2AAY6-RT-WAR

This device complies with Part 15 of the FCC Rules. Operation is subject to the following two conditions: (1) this device may not cause harmful interference, and (2) this device must accept any interference received, including interference that may cause undesired operation.

Changes or modifications not expressly approved by the party responsible for compliance could void the user's authority to operate the equipment.

Note: This equipment has been tested and found to comply with the limits for a Class B digital device, pursuant to part 15 of the FCC Rules. These limits are designed to provide reasonable protection against harmful interference in a residential installation. This equipment generates, uses and can radiate radio frequency energy and, if not installed and used in accordance with the instructions, may cause harmful interference to radio communications. However, there is no guarantee that interference will not occur in a particular installation. If this equipment does cause harmful interference to radio or television reception, which can be determined by turning the equipment off and on, the user is encouraged to try to correct the interference by one or more of the following measures:

- Reorient or relocate the receiving antenna.
- Increase the separation between the equipment and receiver.
- Connect the equipment into an outlet on a circuit different from that to which the receiver is connected.
- Consult the dealer or an experienced radio/TV technician for help.