

BlueCard

Wireless Communication Station User's Manual



BS-1000

Please read this manual carefully, before starting to operate the station.



Main Features

The BS-1000 Communication Station (Comm Station) serves as a direct connection between the PC and the guard tour reader, to allow for immediate uploading of reader data as well as initialization of the readers.

TABLE OF CONTENT

DESCRIPTION OF THE BS-1000 HARDWARE.....3

STATUS LED LIGHTS..... 3

AUDIO SIGNALS 3

POWER SOURCE..... 3

OPERATING INSTRUCTIONS.....3

TROUBLESHOOTING.....4

BS-1000 DATA SHEET.....5

DISCLAIMER.....5

Description of the BS-1000 hardware

Status LED Lights

(in the descriptions below, “up” indicates the direction on the BS-1000 where the status LED lights are located):

- Red LED – Upper-Left
 - ~ Flashing: connected to a guard tour reader.
- Green LED – Lower-Left
 - ~ Flashing: the BS-1000 is operating normally.
- Red LED – Upper-Right
 - ~ The BS-1000 is turned on.
- Green LED – Lower-Right
 - ~ Flashing: the BS-1000 is operating normally.

Audio Signals

- Long Beep (once)
 - ~ The BS-1000 has been turned on and is operating normally.



Power Source

- USB Connection

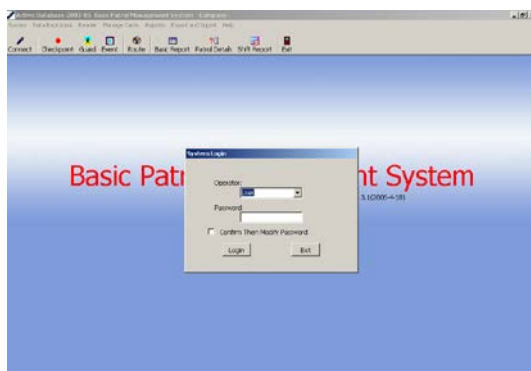
Operating Instructions

Uploading guard tour data from the guard tour reader to the PC

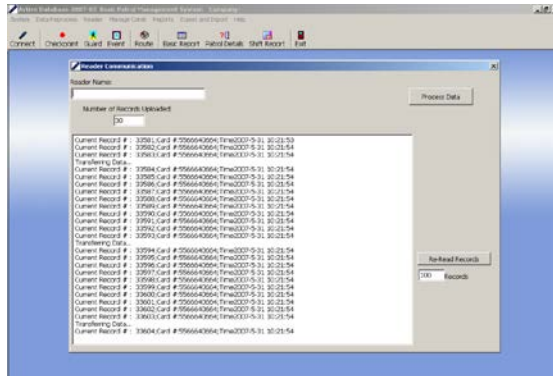
BS-1000 is able to upload data from guard tour readers wirelessly. Compatible readers include models BP-2002S, BP-2002F, BP-2002K, BP-2002-W, and BP-2002B-W.



- Attach the BS-1000 to the PC using the provided USB cable.



- Start the patrol management software, and go into the Connect screen. Set the reader into the indentation on the BS-1000. For reader model BP-2002S, please place its reading head between the status lights, and set its top flush against the inside edge of the BS-1000
- If the reader time is different with the currently using PC, the software will automatically calibrate reader's internal clock.
- The software will automatically upload and process the data.



Reading Signal Cards Using the BS-1000

- The BS-1000 can be used as a signal card reader by the patrol management software, which is convenient when adding signal cards to the system.
 - Attach the BS-1000 to the PC using the provided USB cable.
 - Place the signal card in the region between its LED status lights. The card number will be displayed on-screen and be recorded by the software.

Troubleshooting

Not able to upload data from the guard tour readers.

Check to see if the reader is placed properly on the unit. The reading head of the reader should be between the status lights of the unit, and its top should be flush against the inside edge of the unit.

The patrol management software is not able to find the BS-1000 unit.

Please check the condition of the hardware installation by going into the Windows Device Manager.

Please contact with the technology support if you can not solve the problem by using above solutions.

BS-1000 Data Sheet

Size:	159x79x33mm
Color:	Dark Grey
Connection With Readers:	RFID Wireless Connection
Connection With PC:	USB
Memory	None
Card reading format	EMID RFID
Data transfer speed	30 records per second
Operating temperature	-20°C to 70°C
Operating humidity	0 to 95%

DISCLAIMER

The information in this documentation is subjective to change notice and does not represent a commitment on the part of Bluecard Technologies Corp. No part of the this manual may be reproduced or transmitted in any form or by any means, electronic or mechanical, including photocopying, recording, or information storage and retrieval systems, for any purpose other than the purchaser's personal use, without the written permission of Bluecard Technologies Corp.

All trademarks mentioned in the document, belong to their respective owners.

EU Compliance Statement:

The device complies with EU EMF Directive 1999/519/EC can be used in the European Community.

“ Hereby, (Bluecard Technologies Corp.), declares that this (**Wireless**

Communication Station) is in compliance with the essential requirements and other relevant provisions of Directive 1999/5/EC.”



FCC Compliance Statement:

This device complies with part 15 of the FCC Rules. Operation is subject to the following two conditions:(1)This device may not cause harmful interference, and (2) this device must accept any interference received, including interference that may cause undesired operation.

Important: Any Changes or modifications not expressly approved by the party responsible for compliance could void the user's authority to operate the equipment.

Note: This equipment has been tested and found to comply with the limits for a Class B digital device, pursuant to part 15 of the FCC Rules.

These limits are designed to provide reasonable protection against harmful interference in a

residential installation. This equipment generates, uses and can radiate radio frequency energy and, if not installed and used in accordance with the instructions, may cause harmful interference to radio communications. However, there is no guarantee that interference will not occur in a particular installation.

If this equipment does cause harmful interference to radio or television reception, which can be determined by turning the equipment off and on, the user is encouraged to try to correct the interference by one or more of the following measures:

- Reorient or relocate the receiving antenna.
- Increase the separation between the equipment and receiver.
- Connect the equipment into an outlet on a circuit different from that to which the receiver is connected.
- Consult the dealer or an experienced radio/TV technician for help.

RF Exposure:

This equipment complies with FCC's and Europe's RF radiation exposure limits set forth for an uncontrolled environment. The antenna(s) used for this transmitter must be installed and operated to provide a separation distance of at least 20 cm from all persons and must not be collocated or operating in conjunction with any other antenna or transmitter. Installers must ensure that 20cm separation distance will be maintained between the device (excluding its handset) and users.

The logo for BlueCard, featuring the word "Blue" in blue and "Card" in red, both in a bold, italicized sans-serif font.

Bluecard Technologies Corp.