

BLUETAKE

BT007Ex / BT009Ex

Enhanced Data Rate (EDR)

Bluetooth USB Adapter

User Manual

DECLARATION

No part of this User Manual, including the products and software described in it, may be reproduced, transmitted, transcribed, stored in a retrieval system, or translated into any language in any form or by any means, except documentation kept by the purchaser for backup purposes, without the express written permission of Bluetake Technology Co., Ltd.

Product warranty or service will not be extended if: (1) the product is repaired, modified or altered, unless such repair, modification of alteration is authorized in writing by Bluetake ; or (2) the serial number of the warranty card is defaced or missing.

Bluetake provides this User Manual “as is” without warranty of any kind, either express or implied, including but not limited to the implied warranties or conditions of merchantability or fitness for a particular purpose. In no event shall Bluetake, its directors, officers, employees or agents be liable for any indirect, special, incidental, or consequential damages (including damages for loss of profits, loss of business, loss of use or data, interruption of business and the like), even if Bluetake has been advised of the possibility of such damages arising from any defect or error in this User Manual or product.

Products and corporate names appearing in this User Manual may or may not be registered trademarks or copyrights of their respective companies, and are used only for identification or explanation and to the owner’s benefit, without intent to infringe.

Copyright © 2005 Bluetake Technology Co., Ltd. All Rights Reserved.

Trademark(s)[™] and Registered Trademark(s)[®]

BLUETAKE and the BLUETAKE logo are trademarks of BLUETAKE Technology Co., Ltd. The Bluetooth trademark is owned by the Bluetooth SIG, Inc., and used by BLUETAKE under license.

Microsoft, Windows, and Outlook are registered trademarks of Microsoft Corporation.

Other brand and products names may be registered trademarks or trademarks of their respective holders.

Contents

Getting Start.....	3
Package Checklist.....	3
1. Introduction.....	4
1.1 Safety Precautions.....	5
1.2 System Requirements.....	5
1.3 Product Specification.....	6
2. Bluetooth Software Installation.....	8
2.1 Install the Software.....	8
3. Toshiba Bluetooth Utility Contents.....	10
3.1 Bluetooth Functions.....	10
3.2 Introduction of the Bluetooth Utility Contents.....	12
4. Toshiba Bluetooth Stack Console.....	16
4.1 Toshiba Bluetooth setting.....	16
4.2 Express mode Setup.....	17
4.3 Custom Mode Setup.....	24

Getting Start

Thank you for purchasing this versatile Bluetooth® wireless communication product manufactured by Bluetake Technology Co., Ltd.

Before starting, please read this User Manual carefully to understand how to properly setup and use this product.

Package Checklist

Please check all items included in product package with the list below. If there is any component damaged or missing, please contact your local distributor to get necessary support.

Package list:

- Bluetooth EDR USB Adapter x 1
- Utility CD x 1
 - . Bluetooth software/driver for Windows XP/2000/ME/98SE
 - . User Manual (English version)
 - . Quick Setup Guide (Multi-language version)
- Quick Setup Guide x 1
- Warranty Card x 1

1. Introduction

Bluetooth® Technology

The Bluetooth® wireless technology is a short-range radio technology being developing by Ericsson, Intel, 3Com, Nokia, Toshiba, and other well-known companies. The Bluetooth® wireless technology is a low-cost and short-range radio link system which connects devices such as: desktops, laptops, telephones, printers, PDAs, fax machines, keyboards, and other similar digital products, without the hassle of cable wires. Meanwhile, it can easily simplify both communication and synchronization between devices. Any digital device that utilizes the Bluetooth® wireless technology will be able to take advantage of this technology.

BLUETAKE BT007Ex/BT009Ex Bluetooth EDR USB Adapter

The BLUETAKE BT007Ex/BT009Ex Bluetooth EDR USB Adapter is a compact and multipurpose product providing an efficient and easy solution for wireless applications.

The built-in Bluetooth® v2.0 and Enhanced Data Rate (EDR) technology enables the BT007Ex/BT009Ex - installed computer to communicate with other Bluetooth-enabled devices freely, effortlessly, and faster.

Additionally, the BT007Ex/BT009Ex Bluetooth USB Adapter also bundles Bluetooth software for performing wireless applications such as file transfer, network access, dial-up networking and so on. Moreover, the innovative Bluetooth® profiles “Advance Audio Distribution Profile (A2DP)” , “Audio Video Remote Control Profile (AVRCP)” , and “Basic Image Profile (BIP)” are included to enable your computer to use Bluetooth® stereo headphone with remote control function, and received pictures from Bluetooth mobile phones directly.

1.1 Safety Precautions

Please follow the safety precautions carefully before you use the “Bluetooth EDR USB Adapter” device and the application software. Please make sure that you use the product correctly.

- **Please follow** regional rules for Bluetooth wireless technology use.
- **Do not** allow any child attempting to swallow the product.
- **Do not** attempt to disassemble or alter any part of the product that is not described in this manual.
- **Do not** allow the product to come into contact with water or other liquids. In the event that water or other liquids enter the interior, immediately unplug the product from the computer. Continue use of the wet product may result in fire or electrical shock. Please consult your product distributor or the closest support center.
- **Do not** handle the product to do the plug and unplug operation if your hands are wet. Otherwise it will cause electrical shock.
- **Do not** place the product near a heat source or expose them to direct flame or heat.
- **Do not** use this product while in the hospital or aircraft.
- **Never** place the product close to equipment generating strong electromagnetic fields. Exposure to strong magnetic fields may cause malfunctions or corrupt data.

1.2 System Requirements

It is necessary to install corresponding application software before starting to use the Bluetooth USB Adapter. Therefore, please check your system in advance and ensure it meets in the minimum requirements as described below.

- Processor: Intel Celeron / Pentium III / Pentium 4;
AMD Duron / Athlon; or the higher class CPU
- Operating System: Windows 98SE / ME/ 2000 / XP;
Mac OS X 10.2.6; or the later versions
- System Memory: 32MB at least

1.3 Product Specification

1.3.1 General Specification

- General Radio: Bluetooth Class 1:
100 meters (300 feet) in open space
- Carrier Frequency: 2.4 ~ 2.483GHz
- Data Rate: Up to 3Mbps
- Bluetooth Standard: Bluetooth v2.0 + EDR (Enhanced Data rate)
- Spread Spectrum: FHSS (Frequency Hopping Spread Spectrum)
- Modulation Method: GFSK (1Mbps), $\pi/4$ -DOPSK (2Mbps),
8DPSK (3Mbps)
- I/O interface: USB version 1.1
- Input Power: DV 5V (USB Power)
- RF Output Power: 13 dBm (typical), GFSK
- Sensitivity: -82 dBm (typical), GFSK
- System Support: Windows XP/2000/ME/98SE
Mac OS X 10.2.6 or later
- Dimensions / Weight: 47 x 19 x 10 mm, 10g
- LED Indicator: Single LED
- Bundled Bluetooth Software: Toshiba Bluetooth Stack (for Windows O.S.)

1.3.2 Bundled Software Specification

- Toshiba Bluetooth Stack supported languages for each O/S

O/S	Languages
Windows XP/2000	English · Danish · Dutch · French · German · Italian · Japanese · Norwegian · Spanish · Swedish · Korean · Simplified Chinese · Traditional Chinese · Russian · Finnish · Portuguese (Brazil) · Polish
Windows 98SE/ME	English · Danish · French · German · Italian · Japanese · Norwegian · Spanish · Swedish

- Toshiba Bluetooth Stack for Windows supported Profiles

Profiles	Descriptions	Operation Systems	
		Windows XP/2000	Windows 98SE/ME
SPP	Serial Port	YES	YES
		YES	YES
DUN	Dial Up	YES	YES
FAX	FAX	YES	YES
LAP	LAN access (Bluetooth v1.1)	YES	YES
HID	Mouse, keyboard and others	YES	YES
HCRP	Printing	YES	YES
OPP	Object push	YES	YES
		YES	YES
FTP	File transfer	YES	YES
		YES	YES
BIP	Basic imaging	YES	N/A
		YES	N/A
PAN	Personal area networking	YES	N/A
		YES	N/A
HSP	Headset	YES	N/A
A2DP	High quality audio	YES	N/A
AVRCP	AV remote control	YES	N/A
GAVDP	Necessary for A2DP	YES	N/A
GAP	Generic Access Profile	YES	YES
SDAP	Service discovery	YES	YES
GOEP	Generic Object Exchange Profile	YES	YES

2. Bluetooth Software Installation

2.1 Install the Software

IMPORTANT!

If you have any Bluetooth software previously installed on your computer, you must completely remove it first!

1. Please insert the Utility CD into your CD-ROM drive, and then follow the instruction below to install Bluetooth software:

Note: DO NOT plug the USB Dongle/Adapter into the USB port before software installation.

Note: If the Auto-Run function of CD-ROM is enabled (in Windows, the default setting of this function is usually enabled), then installation program will start automatically. If not, you can utilize the Windows Explorer to browse CD content and execute autorun.exe manually.

2. Select the language, then select "Install Bluetooth Software".



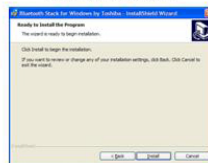
3. Follow the directions on your screen to install the software.



3. Please choose "I accept the terms in the license agreement", then click "Next"



4. Please click "Install"



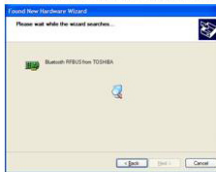
BLUETAKE BT007Ex/BT009Ex Bluetooth USB Adapter – User Manual

4. As prompted, plug the BT007Ex/BT009Ex while the installation ask you to plug the USB adapter. When software installation is complete, restart your computer.

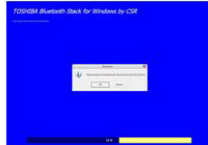
5. Please click "Yes"



7. Initiate and follow up the setup processes



6 Installation will ask you plug BT007Ex into USB port, please plug BT007Ex into USB Port then click "OK"

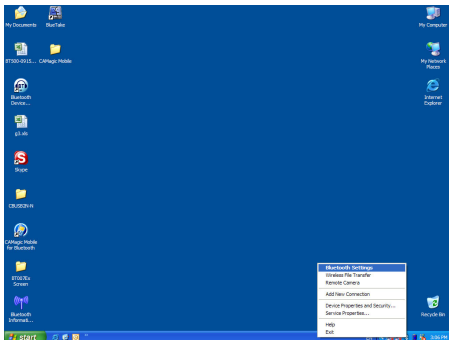


8. As prompted, when software installation is complete, please click "Finish" then click "Yes" restart your computer.



5. After the computer is restarted, you can see the "Bluetooth" icon added at the Windows toolbar. Please right click on "Bluetooth icon", choose "Bluetooth setting".

6. The main window of Toshiba Bluetooth Stack will be show on the window desktop.



3. Toshiba Bluetooth Utility Contents

Toshiba Bluetooth Utility is an Windows-based software from Toshiba that allows your Bluetooth® enabled desktop or notebook computer to wirelessly connect to other Bluetooth enabled devices. Toshiba Bluetooth Utility allows MS Windows users to wirelessly access a wide variety of Bluetooth enabled digital devices, such as cameras, mobile phones, headsets, printers, and GPS receivers. You can also form networks and exchange data with other Bluetooth enabled computers or PDAs.

Platforms supported by Toshiba Bluetooth stack include: Windows 98SE, XP, and ME, 2000.

3.1 Bluetooth Functions

In order to connect and share services via Bluetooth wireless technology, two devices must support the same Bluetooth Profile(s) as well as opposite device roles (i.e., one must be the server, and the other must be the client). Bluetooth enabled devices often support multiple profiles, and if involved in multiple connections, can perform different device roles simultaneously.

Toshiba Bluetooth stack supports the following Bluetooth functions (Profiles) in the following device roles:

BLUETAKE BT007Ex/BT009Ex Bluetooth USB Adapter – User Manual

Profiles	Descriptions	Roles	Operation Systems	
			Windows XP/2000	Windows 98SE/ME
SPP	Serial Port	Dev A.	YES	YES
		Dev B.	YES	YES
DUN	Dial Up	DT	YES	YES
FAX	FAX	DT	YES	YES
LAP	LAN access (Bluetooth v1.1)	DT	YES	YES
HID	Mouse, keyboard and others	Host	YES	YES
HCRP	Printing	Client	YES	YES
OPP	Object push	Client	YES	YES
		Server	YES	YES
FTP	File transfer	Client	YES	YES
		Server	YES	YES
BIP	Basic imaging	Image Push	YES	NO
		Remote Camera	YES	NO
PAN	Personal area networking	PAN	YES	NO
		GN	YES	NO
HSP	Headset	AG	YES	NO
A2DP	High quality audio	Source	YES	NO
AVRCP	AV remote control	Target	YES	NO
GAVDP	Necessary for A2DP		YES	NO
GAP	Generic Access Profile		YES	YES
SDAP	Service discovery		YES	YES
GOEP	Generic Object Exchange Profile		YES	YES

Notes:

- Only one Headset or AV Headphone connection can exist at a time, since there is only one virtual Bluetooth audio device.

3.2 Introduction of the Bluetooth Utility Contents

The Bluetooth Utility is a software tool used to configure a variety of settings once a connection has been established between the PC and the Bluetooth device. It also facilitates the exchange of files between Bluetooth devices.

The Bluetooth Utility comprises the following six tools. Descriptions are provided for the functions and the supported profiles for the respective tools.

3.2.1 Bluetooth Settings

This program enables you to easily configure settings when you connect to a Bluetooth device for the first time. The function of a configured and registered device is displayed on the main window as a connection icon.

As a rule, the Bluetooth device will be connected automatically after having been set up; however, a shortcut can be created for a manual connection, if so required.



3.2.2 Bluetooth Manager

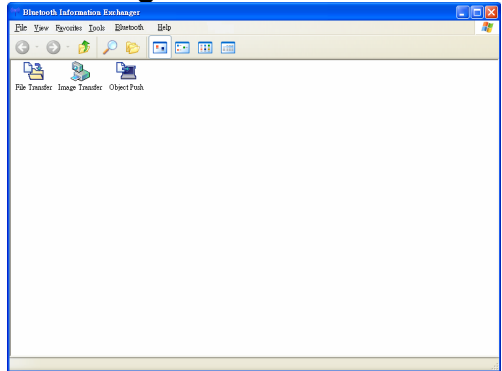
This program, which appears as a Taskbar icon, monitors and controls the operating status of Bluetooth devices. It can be used to start the Bluetooth Setup Utility, add a new connection, disconnect from a remote device, and perform other tasks.



3.2.3 Bluetooth Information Exchanger

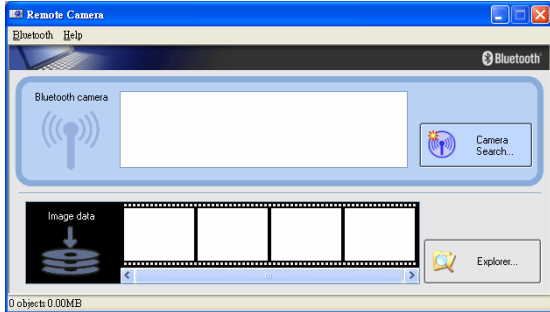
This program enables you to easily transfer files and images to or exchange business card data with a wireless device by selecting the icon of the counterpart device. The wireless devices to which you are connecting must also support the same service functions (FTP and OPP).

You can find the “**Bluetooth Information Exchanger**” icon on the Windows O/S desktop and run it.



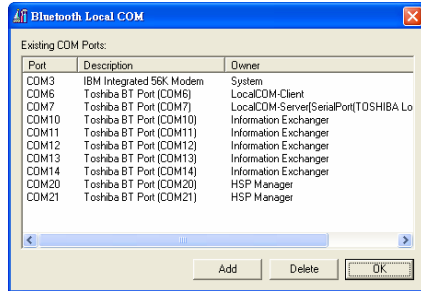
3.2.4 Remote Camera

Connecting to a Bluetooth - compatible digital camera allows the device to be operated from the PC side, and captured images to be sent to the PC.



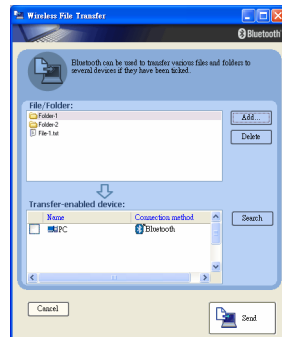
3.2.5 Bluetooth Local COM

This program, which is registered in the Control Panel, can create a virtual COM port for use with the Bluetooth Utility. If you need to create a client COM port with the Bluetooth Setup Utility, it can be created automatically without having to start the program.



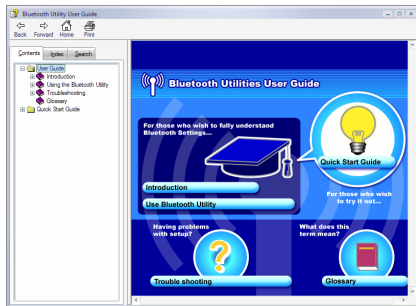
3.2.6 Wireless File Transfer

You can send a file wirelessly to another device by right-click on the intended file and using the "Sending to Bluetooth Device" menu that appears.



3.2.7 On-Line User guide

When you have troubles in using Toshiba Bluetooth stack, you can easily get on-line help by click:
[help => help].



4. Toshiba Bluetooth Stack Console

4.1 Toshiba Bluetooth setting

Toshiba Bluetooth setting starts can open with the Main Window. Use the Main Window to perform your primary connection operations or others setting. The Main Window displays the local device as well as the remote devices detected. Different icons distinguish different types of remote devices.



4.1.1 Start Toshiba Bluetooth Setting

Methods for registering new devices using the Bluetooth Setting shall now be described.

[Bluetooth Settings] provides two set-up methods: "Express Mode" and "Custom Mode."

- **Express Mode**

[Bluetooth Settings] will automatically detect and register services. If

several services (profiles) are supported in the device, the service that has been set to the highest priority shall be selected and registered. Express Mode is normally recommended for device set-up.

- **Custom Mode**

After having been detected, the services supported by the device are displayed as a list, from which you can select the desired function(s). Custom Mode must be used to set up a device if, for example, you wish to use a modem station to send a fax (because in Express Mode, the DUN profile will be automatically selected since it has a higher priority than the FAX profile).

The differences between setting up the same device (a Bluetooth mouse) using Express Mode and Custom Mode are described below.

4.2 Express Mode Setup

4.2.1 Starting Bluetooth Settings

1. Click [Start]→[All Programs]→[Bluetooth]→[Bluetooth Settings].

(Under Windows 2000, click [Start]→[Programs]→[Bluetooth]→[Bluetooth Settings].)

Note: The same result can be achieved by right-clicking on the Bluetooth icon in the task tray and selecting [Bluetooth Settings] from the menu that appears.



2. The [Bluetooth Settings] window below will appear when other devices have already been registered.



3. Please click the [New Connection] button to open the [Add New Connection Wizard] window. If no devices have been registered yet, please proceed directly to "Detecting Bluetooth Devices."

4.2.2 Detecting Bluetooth devices

1. Switch the mouse power ON to make it connectable via Bluetooth.

(Please refer to the mouse instruction manual for details on this procedure.)

2. Confirm that [Express Mode] has been selected in the [Add New Connection Wizard (Welcome to the Add New Connection Wizard)] window, and click on the [Next] button.

BLUETAKE BT007Ex/BT009Ex Bluetooth USB Adapter – User Manual



3. Searching for Bluetooth devices will start.



4. When the mouse has been detected, the name and address of the device will appear in the [Add New Connection Wizard (Select Device)] window.



Note: If no device is found, please confirm that the device has been made connectable via Bluetooth, and click on the [Update] button. A further device search will be performed.

4.2.3 Detecting services

1. Select the mouse device name from [Device List] and click on the [Next] button.



2. Bluetooth device detection will commence.



Note: If several services (profiles) are supported by the device, the service that has been set to the highest priority shall be automatically selected and set up in Express Mode.

Please use Custom Mode if you wish to select desired services manually.

Note: When a service has been detected, a window prompting you to enter the Bluetooth passkey (PIN code) may appear. Please enter the passkey and click on the [OK] button.

Please refer to your device instruction manual for information on which passkey to use.



Note: If you have not entered your Bluetooth passkey after a certain amount of time has passed, the connection process will be cancelled for security reasons. Please perform the passkey entry process again.

A message will appear prompting you to prepare the device for connection.

3. Select the type and name of the icon to be displayed once the device has been registered, and click on the [Next] button.

BLUETAKE BT007Ex/BT009Ex Bluetooth USB Adapter – User Manual



Note: If you wish to change the icon, please click on the [Change Icon] button and select your preferred icon from the list that appears.



4.2.4 Registering settings information

1. Click on the [Finish] button.



2. The [Bluetooth Settings] window will appear. The icons of the registered devices will appear, and the devices will be ready to use.



4.3 Custom Mode Setup

4.3.1 Starting Bluetooth Settings

1. Click [Start]→[All Programs]→[Bluetooth]→[Bluetooth Settings].

(Under Windows 2000, click [Start]→[Programs]→[Bluetooth]→[Bluetooth Settings].)

Note: The same result can be achieved by right-clicking on the Bluetooth icon in the task tray and selecting [Bluetooth Settings] from the menu that appears.



2. The [Bluetooth Settings] window below will appear when other devices have already been registered.



3. Please click the [New Connection] button to open the [Add New Connection Wizard] window. If no devices have been registered yet, please proceed directly to "Detecting Bluetooth Devices."

4.3.2 Detecting Bluetooth devices

1. Switch the mouse power ON to make it connectable via Bluetooth.

(Please refer to the mouse instruction manual for details on this procedure.)

2. Confirm that [Custom Mode] has been selected in the [Add New Connection Wizard (Welcome to the Add New Connection Wizard)] window, and click on the [Next] button.



3. Searching for Bluetooth devices will start.



4. When the mouse has been detected, the name and address of the device will appear in the [Add New Connection Wizard (Select Device)] window.



Note: If no device is found, please confirm that the device has been made connectable via Bluetooth, and click on the [Update] button. A further device search will be performed.

4.3.3 Detecting services

1. Select the mouse device name from [Device List] and click on the [Next] button.



2. Bluetooth device detection will commence.



Note: When a service has been detected, a window prompting you to enter the Bluetooth passkey (PIN code) may appear. Please enter the passkey and click on the [OK] button.

Please refer to your device instruction manual for information on which passkey to use.



Note: If you have not entered your Bluetooth passkey after a certain amount of time has passed, the connection process will be cancelled for security reasons. Please perform the passkey entry process again.

Note: If you try to register a device that has already been registered, the following message will appear, and you will not be able to proceed with further operation.

Please click on the [OK] button to close the message.



The services supported by the device will be displayed.

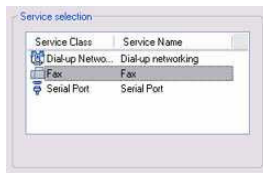
3. Select the desired service and click on the [Next] button.



Note: When a device supports several services:

If the device supports several services, you can use Custom Mode to manually select the services (profiles) you wish to use from the list that appears under [Select Services].

Example: List of wireless modem station services



If Express Mode is used to perform the set-up, the highest-priority service in the device will be automatically selected and configured.

4. Click on the [OK] button.



Note: When the settings information has been registered, a window prompting you to enter the Bluetooth passkey (PIN code) may appear. Please enter the passkey and click on the [OK] button. Please refer to your device instruction manual for information on which passkey to use.



If you have not entered your Bluetooth passkey after a certain amount of time has passed, the connection process will be cancelled for security reasons. Please perform the passkey entry process again.

The [Add New Connection Wizard (Connection Name Setup)] window will appear if a service has been properly detected.

5. Select the type and name of the icon to be displayed once the device has been registered, and click on the [Next] button.



Note: If you wish to change the icon, please click on the [Change Icon] button and select your preferred icon from the list that appears.



4.3.4 Registering settings information

1. Click on the [Finish] button.



BLUETAKE BT007Ex/BT009Ex Bluetooth USB Adapter – User Manual

2. The [Bluetooth Settings] window will appear. The icons of the registered devices will appear, and the devices will be ready to use.



5. Bluetooth Service Usage

5.1 Connecting to internet

Federal Communications Commission (FCC) Statement

RADIO FREQUENCY INTERFERENCE STATEMENT

This device complies with Part 15 of the FCC rules. Operation is subject to the following two conditions: 1) this device may not cause harmful interference, and 2) this device must accept any interference received, including interference that may cause undesired operation.

This equipment has been tested and found to comply with the limits for a Class B digital device, pursuant to Part 15 of the FCC rules. These limits are designed to provide reasonable protection against harmful interference in a residential installation. This equipment generates, uses and can radiate radio frequency energy and if not installed and used in accordance with the instructions, may cause harmful interference to radio communications. However, there is no guarantee that interference will not occur in a particular installation. If this equipment does cause harmful interference to radio or television reception, which can be determined by turning the equipment off and on, the user is encouraged to try correct the interference by one or more of the following measures:

- Reorient the receiving antenna.
- Increase the separation between the equipment and receiver.
- Connect the equipment into an outlet on a circuit different from that to which the receiver is connected.
- Consult the dealer or an experienced radio/TV technician for help.

Any special accessories needed for compliance must be specified in the instruction manual.

You are cautioned that changes or modifications not expressly approved by the party responsible for compliance could void your authority to operate the equipment.

The antenna(s) used for this transmitter must not be co-located or operating in conjunction with any other antenna or transmitter.