

Software Installation

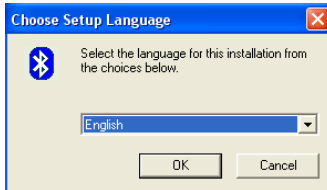
Few contents of software CD are different according to particular product user purchased.

1. Please insert the Utility CD into your CD-ROM drive, and then follow the instruction below to install Bluetooth software: (Note! DO NOT plug the USB Dongle/Adapter into the USB port before software installation)

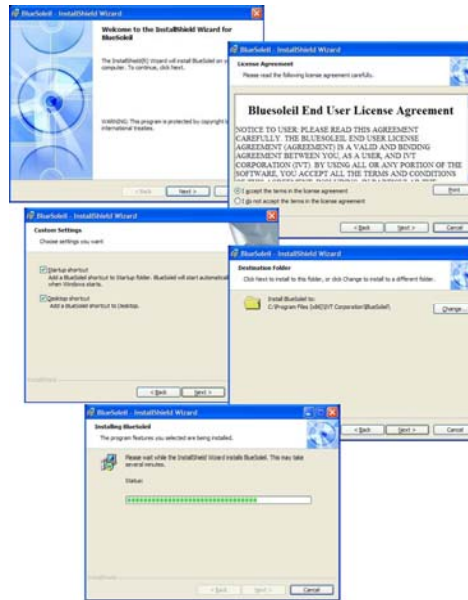


Note: If the Auto-Run function of CD-ROM is enabled (in Windows, the default setting of this function is usually enabled), then installation program will start automatically. If not, you can utilize the Windows Explorer to browse CD content and execute autorun.exe manually.

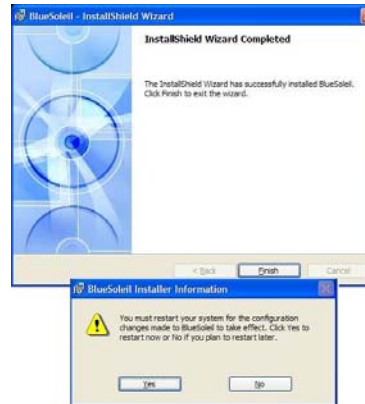
2. Follow the directions on your screen to install the software.



1. Choose setup language



2. Initiate and follow up the setup processes



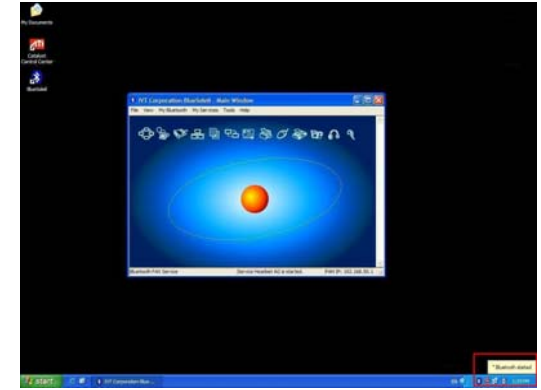
3. Finish the setup and reset the computer

3. As prompted, when software installation is complete, restart your computer.

Insert BT007SX / BT009SX

[Windows XP/2000 operating system]

1. After the computer is restarted, you can see the shortcut icon of BlueSoleil is added and the main window of BlueSoleil is opened on the Windows desktop. Then, the message popped up at the Windows toolbar will notify you to insert the Bluetooth USB adapter.

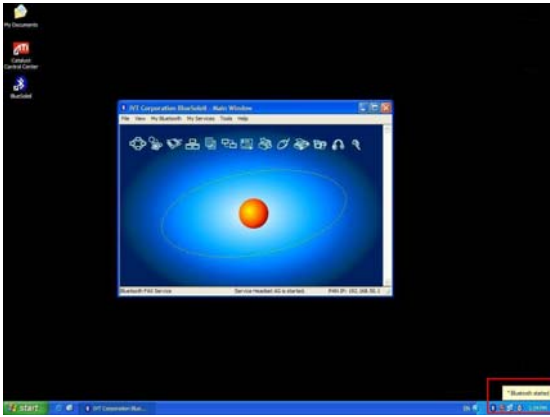


2. Insert the USB adapter into the USB port of your computer.
3. The Found New Hardware Wizard will automatically start. Select "Install the software automatically (Recommended)" and then follow the wizard to install the Bluetooth USB adapter's drivers.

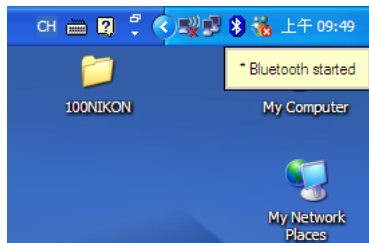


[Windows XP SP2 operating system]

1. After the computer is restarted, you can see the shortcut icon of BlueSoleil is added and the main window of BlueSoleil is opened on the Windows desktop. Then, the message popped up at the Windows toolbar will notify you to insert the Bluetooth USB adapter.



2. Insert the USB adapter into the USB port of your computer.
3. The Hardware Update Wizard will automatically start and install the BT007SX / 009SX driver, after driver is installed, a "Bluetooth started" screen will shown on your task bar.



- For more detailed description of Bluetooth products application, please refer to the User Manual that locates in Utility CD.

FCC Statement

This equipment has been tested and found to comply with the limits for a Class B digital device, pursuant to part 15 of the FCC rules. These limits are designed to provide reasonable protection against harmful interference in a residential installation. This equipment generates, uses and can radiate radio frequency energy and, if not installed and used in accordance with the instructions, may cause harmful interference to radio communications. However, there is no guarantee that interference will not occur in a particular installation. If this equipment does cause harmful interference to radio or television reception, which can be determined by turning the equipment off and on, the user is encouraged to try to correct the interference by one or more of the following measures:

- Reorient or relocate the receiving antenna.
- Increase the separation between the equipment and receiver.
- Connect the equipment into an outlet on a circuit different from that to which the receiver is connected.-Consult the dealer or an experienced radio/TV technician for help.

This device complies with Part 15 of the FCC rules. Operation is subject to the following two conditions:

- 1) this device may not cause interference and
- 2) this device must accept any interference, including interference that may cause undesired operation of the device.

This transmitter must not be co-located or operating in conjunction with any other antenna or transmitter. Any Changes or modifications not expressly approved by the party responsible for compliance could void the user's authority to operate this equipment.



BLUETAKE
Technology

Taiwan Headquarter

Tel: +886-2-2664-7199
E-mail: sales@bluetake.com

USA, California

Tel: +1-626-369-9888
E-mail: usa@bluetake.com

Mexico

Tel: +52-55-3096-5321
E-mail: mexico@bluetake.com

Japan, Tokyo

Tel: +81-424-42-8268
E-mail: japan@bluetake.com

Sxngapore

Tel: +65-6743-2300
E-mail: spore@bluetake.com

Hong Kong

Tel: +852-9777-8785
E-mail: hk@bluetake.com

Quick Setup Guide

BT007SX
Class I EDR USB Adapter



BT009SX
Class II EDR USB Adapter



www.bluetake.com