

BLUETAKE

BT007Si / BT009Si

Bluetooth USB Adapter

User Manual

DECLARATION

No part of this User Manual, including the products and software described in it, may be reproduced, transmitted, transcribed, stored in a retrieval system, or translated into any language in any form or by any means, except documentation kept by the purchaser for backup purposes, without the express written permission of Bluetake Technology Co., Ltd.

Product warranty or service will not be extended if: (1) the product is repaired, modified or altered, unless such repair, modification or alteration is authorized in writing by Bluetake ; or (2) the serial number of the product is defaced or missing.

Bluetake provides this User Manual “as is” without warranty of any kind, either express or implied, including but not limited to the implied warranties or conditions of merchantability or fitness for a particular purpose. In no event shall Bluetake, its directors, officers, employees or agents be liable for any indirect, special, incidental, or consequential damages (including damages for loss of profits, loss of business, loss of use or data, interruption of business and the like), even if Bluetake has been advised of the possibility of such damages arising from any defect or error in this User Manual or product.

Products and corporate names appearing in this User Manual may or may not be registered trademarks or copyrights of their respective companies, and are used only for identification or explanation and to the owner’s benefit, without intent to infringe.

Copyright © 2005 Bluetake Technology Co., Ltd. All Rights Reserved.

Trademark(s)[™] and Registered Trademark(s)[®]

BLUETAKE and the BLUETAKE logo are trademarks of BLUTAKE Technology Co., Ltd. The Bluetooth trademark is owned by the Bluetooth SIG, Inc., and used by BLUETAKE under license.

Microsoft, Windows, and Outlook are registered trademarks of Microsoft Corporation. BlueSoleil is registered trademarks of IVT Inc.

Other brand and products names may be registered trademarks or trademarks of their respective holders.

Contents

Getting Start.....	4
Package Checklist.....	4
1. Introduction.....	5
1.1 Safety Precautions.....	6
1.2 System Requirements.....	6
1.3 Product Specification.....	7
2. Bluetooth Software Installation.....	8
2.1 Install the Software.....	8
2.2 Insert the Bluetooth USB Adapter.....	9
3. BlueSoleil Console.....	11
3.1 Bluetooth Functions.....	11
3.2 BlueSoleil Main Window.....	13
3.3 Start BlueSoleil.....	14
3.4 Search for Other Bluetooth Enabled Devices.....	15
3.5 Establish Connection.....	17
3.6 Bluetooth Security.....	23

4. Bluetooth Service Usage.....	25
4.1 AV Headphone.....	25
4.2 Basic Imaging.....	26
4.3 Dial-up Networking.....	27
4.4 FAX.....	29
4.5 File Transfer.....	29
4.6 Headset.....	33
4.7 Human Interface Device.....	34
4.8 LAN Access.....	35
4.9 Object Push.....	38
4.10 Personal Area Networking.....	42
4.11 Printer.....	45
4.12 Serial Port.....	47
4.13 Bluetooth Synchronization.....	48
Appendix-1 Bluesoleil Manu.....	50
A-1.1 BlueSoleil Environment.....	50
A-1.2 Device Configurations.....	57
A-1.3 Security Configuration.....	58

Getting Start

Thank you for purchasing this versatile Bluetooth® wireless communication product manufactured by Bluetake Technology Co., Ltd.

Before starting, please read this User Manual carefully to understand how to properly setup and use this product.

Package Checklist

Please check all items included in product package with the list below. If there is any component damaged or missing, please contact your local distributor to get necessary support.

Package list:

- Bluetooth USB Adapter x 1
- Utility CD x 1
 - . Bluetooth software/driver (BlueSoleil) for Windows XP/2000/ME/98SE
 - . User Manual (English version)
 - . Quick Setup Guide (Multi-language version)
- Quick Setup Guide x 1
- Warranty Card x 1

1. Introduction

Bluetooth® Technology

The Bluetooth® wireless technology is a short-range radio technology being developing by Ericsson, Intel, 3Com, Nokia, Toshiba, and other well-known companies. The Bluetooth® wireless technology is a low-cost and short-range radio link system which connects devices such as: desktops, laptops, telephones, printers, PDAs, fax machines, keyboards, and other similar digital products, without the hassle of cable wires. Meanwhile, it can easily simplify both communication and synchronization between devices. Any digital device that utilizes the Bluetooth® wireless technology will be able to take advantage of this technology.

BLUETAKE BT007Si / BT009Si Bluetooth USB Adapter

The BLUETAKE BT007Si / BT009Si Bluetooth USB Adapter is a compact and multipurpose product providing an efficient and easy solution for wireless applications.

The built-in Bluetooth® wireless technology enables the BT007Si / BT009Si - installed computer to communicate with other Bluetooth-enabled devices freely and effortlessly.

Additionally, the BT007Si / BT009Si Bluetooth USB Adapter also bundles a Bluetooth software for performing wireless applications such as file transfer, network access, dial-up networking and so on. Moreover, the innovative Bluetooth® profiles “Human Interface Device (HID)” , “Advance Audio Distribution Profile (A2DP)” , and “Basic Image Profile (BIP)” are included to enable your computer to use Bluetooth® keyboard and mouse, stereo headphone, and received pictures from Bluetooth mobile phones directly.

1.1 Safety Precautions

Please follow the safety precautions carefully before you use the “Bluetooth USB Adapter” device and the application software. Please make sure that you use the product correctly.

- **Please follow** regional rules for Bluetooth wireless technology use.
- **Do not** allow any child attempting to swallow the product.
- **Do not** attempt to disassemble or alter any part of the product that is not described in this manual.
- **Do not** allow the product to come into contact with water or other liquids. In the event that water or other liquids enter the interior, immediately unplug the product from the computer. Continue use of the wet product may result in fire or electrical shock. Please consult your product distributor or the closest support center.
- **Do not** handle the product to do the plug and unplug operation if your hands are wet. Otherwise it will cause electrical shock.
- **Do not** place the product near a heat source or expose them to direct flame or heat.
- **Do not** use this product while in the hospital or aircraft.
- **Never** place the product close to equipment generating strong electromagnetic fields. Exposure to strong magnetic fields may cause malfunctions or corrupt data.

1.2 System Requirements

It is necessary to install corresponding application software before starting to use the Bluetooth USB Adapter. Therefore, please check your system in advance and ensure it meets in the minimum requirements as described below.

- Processor: Intel Celeron / Pentium III / Pentium 4;
AMD Duron / Athlon; or the higher class CPU
- Operating System: Windows 98SE / ME/ 2000 / XP;
Mac OS X 10.2.6; or the later versions
- System Memory: 32MB at least

1.3 Product Specification

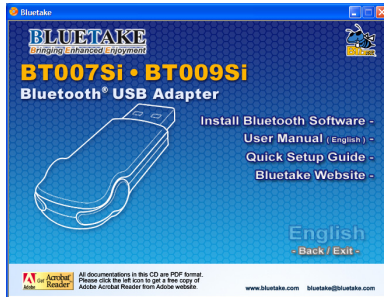
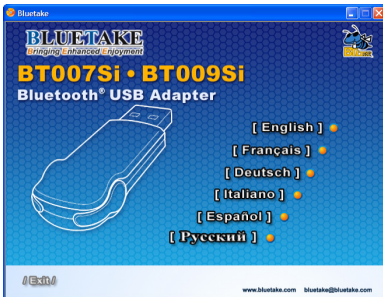
Product	BLUETAKE BT007Si / BT009Si Bluetooth USB Adapter
General Radio	- BT007Si: Bluetooth Class I, up to 100 meters radio coverage in open space - BT009Si: Bluetooth Class II, up to 10 meters radio coverage in open space - Carrier Frequency: 2.4 ~ 2.483GHz
Spread Spectrum	FHSS (Frequency Hopping Spread Spectrum)
Bluetooth Data Rate	Up to 1 Mbps
Antenna	Printed Antenna
I/O Interface	USB 1.1
Input Power	DV 5V (USB Power)
LED Indicator	Single LED
Dimensions	47 x 19 x 10 mm, 10g
Bluetooth Wireless Features	- Personal Area Networking Profile - Serial Port Profile - Dial Up Networking Profile - LAN Access Profile - File Transfer Profile - Headset Profile - Human Interface Device Profile - Hardcopy Cable Replacement Profile - Object Push Profile - Synchronization Profile - FAX Profile - Advanced Audio Distribution Profile - Basic Imaging Profile

2. Bluetooth Software Installation

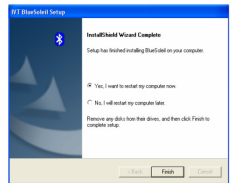
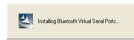
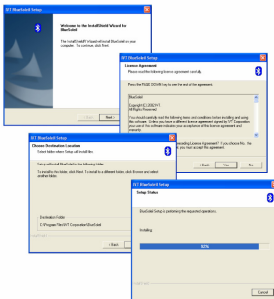
2.1 Install the Software

IMPORTANT! If you have any Bluetooth software previously installed on your computer, you must completely remove it first!

1. Insert the BT007Si / BT009Si Utility CD into the CD drive of your computer. The install application will automatically start. (If the install application does not start automatically, please open “My Computer” in your PC, choose the CD-Rom device you insert the Utility CD, then double click the “Autorun.exe”.)
2. Select the language, then select “Install Bluetooth Software”.



3. Follow the directions on your screen to install the software.
4. As prompted, when software installation is complete, restart your computer.



1. Choose setup language

2. Initiate and follow up the setup processes

3. Install software components

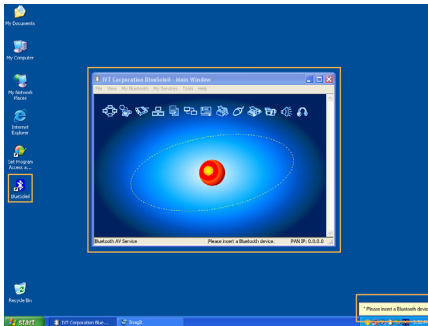
4. Finish the setup and restart the computer

2.2 Insert the Bluetooth USB Adapter

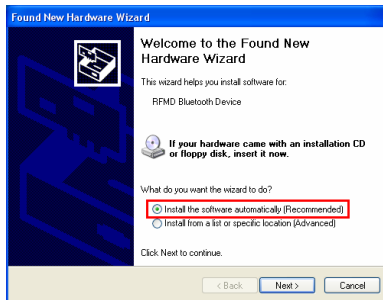
IMPORTANT! Be sure to install the BlueSoleil Bluetooth software and restart the computer **BEFORE** you insert the Bluetooth USB adapter!

[Windows XP/2000/ME/98SE operating system]

1. After the computer is restarted, you can see the shortcut icon of BlueSoleil is added and the main window of BlueSoleil is opened on the Windows desktop. Then, the message popped up at the Windows toolbar will notify you to insert the Bluetooth USB adapter.



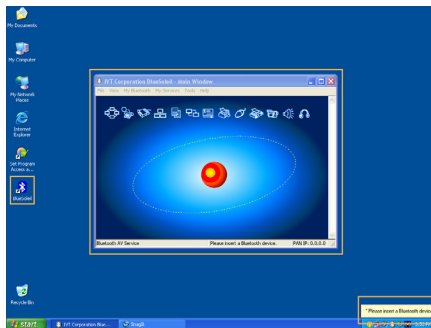
2. Insert the USB adapter into the USB port of your computer.
3. The Found New Hardware Wizard will automatically start. Select "Install the software automatically (Recommended)" and then follow the wizard to install the Bluetooth USB adapter's drivers.



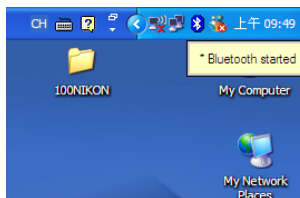
BLUETAKE BT007Si / BT009Si Bluetooth USB Adapter – User Manual

[Windows XP SP2 operating system]

1. After the computer is restarted, you can see the shortcut icon of BlueSoleil is added and the main window of BlueSoleil is opened on the Windows desktop. Then, the message popped up at the Windows toolbar will notify you to insert the Bluetooth USB adapter.



2. Insert the USB adapter into the USB port of your computer.
3. The Hardware Update Wizard will automatically start and install the BT007Si / 009Si driver, after driver is installed, a "Bluetooth started" screen will shown on your task bar.



3. BlueSoleil Console




BlueSoleil is an Windows-based software from IVT that allows your Bluetooth® enabled desktop or notebook computer to wirelessly connect to other Bluetooth enabled devices. BlueSoleil allows MS Windows users to wirelessly access a wide variety of Bluetooth enabled digital devices, such as cameras, mobile phones, headsets, printers, and GPS receivers. You can also form networks and exchange data with other Bluetooth enabled computers or PDAs.

Platforms supported by BlueSoleil include: Windows 98SE, ME, 2000, and XP.











3.1 Bluetooth Functions

In order to connect and share services via Bluetooth wireless technology, two devices must support the same Bluetooth Profile(s) as well as opposite device roles (i.e., one must be the server, and the other must be the client). Bluetooth enabled devices often support multiple profiles, and if involved in multiple connections, can perform different device roles simultaneously.

BlueSoleil supports the following Bluetooth functions (Profiles) in the following device roles:

Bluetooth Functions (Profiles)	Icon	Client	Server
AV Headphone*		√	√
Basic Image Profile		√	√
Dial-Up Networking		√	

BLUETAKE BT007Si / BT009Si Bluetooth USB Adapter – User Manual

Fax		√	
File Transfer		√	√
Headset*		√	√
Human Interface Device		√	
LAN Access		√	√
Object Push		√	√
Personal Area Networking		√	√
Printer		√	
Serial Port		√	√
Synchronization		√	√

Notes:

- Only one Headset or AV Headphone connection can exist at a time, since there is only one virtual Bluetooth audio device.
- The Headset and AV Headphone Profiles do not work on Windows 98SE or Windows Me.

3.2 BlueSoleil Main Window

By default, BlueSoleil starts with the Main Window open. Use the Main Window to perform your primary connection operations. The Main Window displays the local device (red ball) as well as the remote devices detected in range. Different icons distinguish different types of remote devices.

At the top of the Main Window are Service Buttons. After you search for the services supported by a remote device, the supported services of the selected device will be highlighted.

Local Device — Basic Operations:

Hover your mouse over the red ball to display the local device's Bluetooth name and address.

Click on the red ball to start or stop searching for Bluetooth devices in range.

Right-click on the red ball to display a pop-up menu of related operations (e.g., General Inquiry, My Services, Security, etc.).

Remote Devices — Icon Meanings

White — Idle. The normal state of the device.

Yellow—Selected. You have selected the device.

Green — Connected. The device is connected to your local device.

Remote Devices — Operations

Single-click to select.

Double-click to search for the services supported by the device.

Right-click to display a pop-up menu of related operations (e.g., Refresh Devices, Pair Devices, Connect, etc.).

Services — Icon Meanings

White — Idle. The normal state.

Yellow — Available. The service is available on the selected device.

Green — Connected. The service is active in a connection with the remote device.

Services — Operations

Hover your mouse over the service icon to display the name of the service.

Single-click on the service icon to connect.

Right-click on the service icon to display a pop-up menu of related operations.

3.3 Start BlueSoleil

1. Start BlueSoleil. Click on the BlueSoleil icon on your desktop, or go to *Start | Programs | IVT BlueSoleil | BlueSoleil*.

Note: BlueSoleil will detect each insertion or removal of the USB adapter.

Alternatively, you can start BlueSoleil before plugging in the USB adapter.

2. The very first time you use BlueSoleil, the Welcome to Bluetooth screen will appear. Assign your Windows system a name and device type, to be shown to other Bluetooth enabled devices. In most cases, you should leave the security setting checked. Click OK.



3.4 Search for Other Bluetooth Enabled Devices

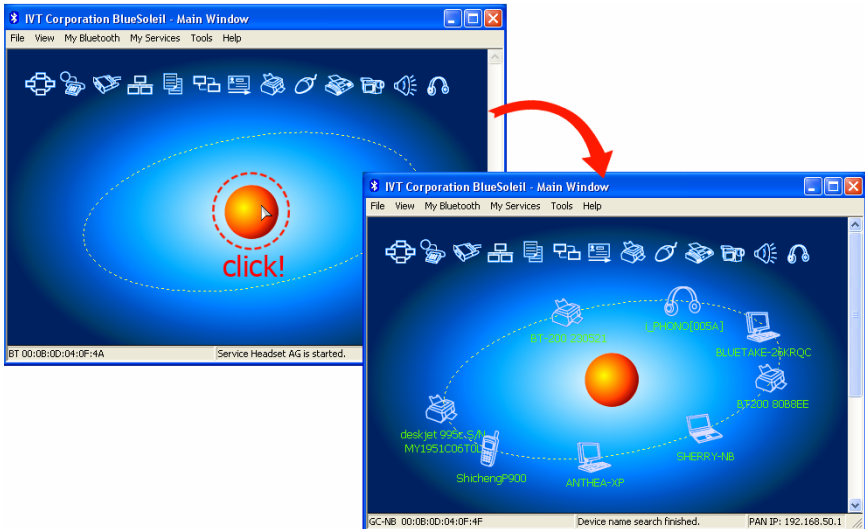
Before it can connect, your computer must first detect other Bluetooth enabled devices in range.

3.4.1 Initiate a Device Search

1. Make sure that the Bluetooth enabled device you wish to connect to is turned on, with sufficient battery power, and set in discoverable mode. Have any necessary passkeys ready. If necessary, you may also need to enable the service you want to use on the remote device. Refer to the remote device's user documentation for instructions.

If you haven't done so already, you may also want to assign the device a Bluetooth name. Refer to the device's user documentation for instructions.

2. In the Main Window, click on the red ball to start the device search. Alternatively, you can press F5.

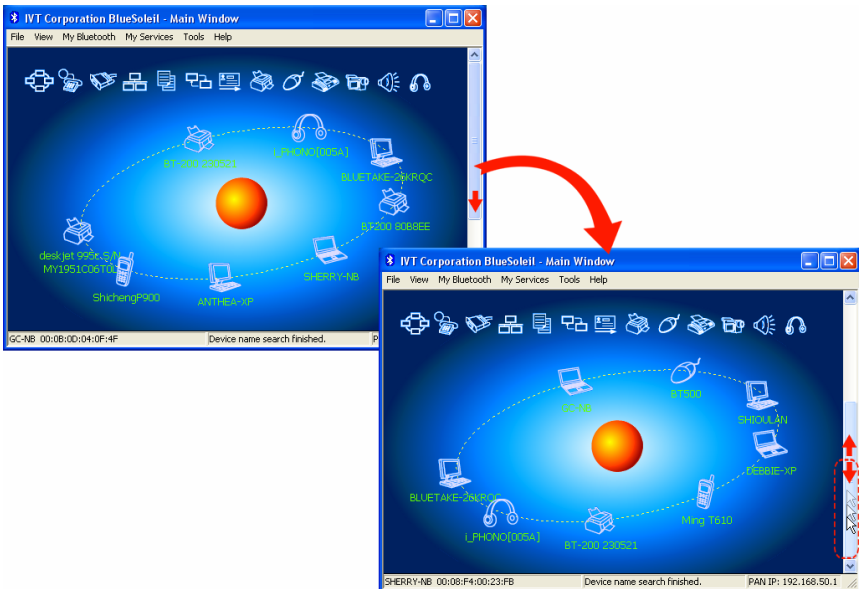


BLUETAKE BT007Si / BT009Si Bluetooth USB Adapter – User Manual

3. After a few seconds, an icon will appear around the center ball for each Bluetooth enabled device detected within the radio range.

Note:

- The Main Window can display only eight discovered devices at a time. If BlueSoleil discovered more than eight devices, use the scroll bar to view the remaining devices discovered by BlueSoleil.



- To sort the devices by device name, device address, or device type, click View | Arrange Devices.

4. Wait several seconds until BlueSoleil reports the name of each device.

5. If the device you want is not listed, make sure that the device is turned on and discoverable and try searching again. You have multiple options for starting another search:

- If you start another search by double-clicking on the red ball, then the list of previously detected devices will not be cleared.

- If you start another search by pressing F5, then the list of previously detected devices will be cleared.

3.5 Establish Connection

Note: These are generic instructions for any type of Bluetooth enabled device. Refer to the instructions in Chapter 4 for specific details for the type of service you plan to use.

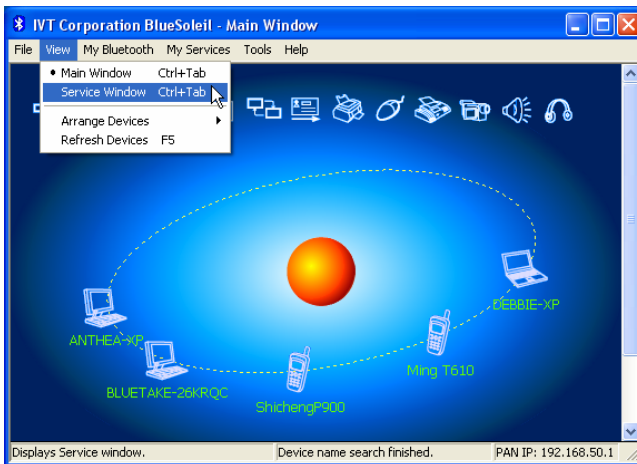
Normally, a connection is initiated from the client. Check the chart in Chapter 1 to verify which device role BlueSoleil supports for the service you wish to use.

- On the server side, start the service
- On the client side, initiate the connection

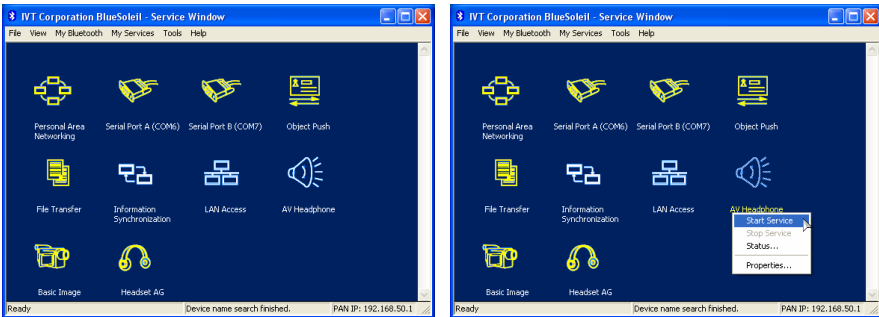
3.5.1 Start the Service

If you would like to use your computer as a server in a Bluetooth connection, you must first start (enable) the appropriate service(s) on your system.

1. Access the Service Window. *Click View | Service Window.*



2. If the icon for a service is highlighted (yellow), then the service has already been started. If the icon is white, then you need to start the service in order to use it. Right-click the icon. In the pop-up menu, select Start Service. The icon should now be highlighted (yellow). Serial Port icons will also report which COM port is assigned to them.



Note:

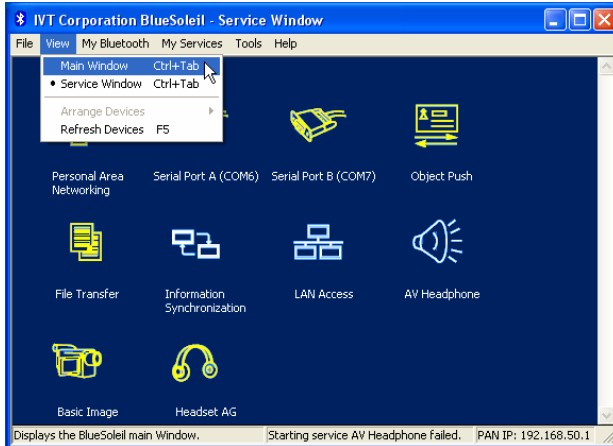
- Icons will appear only for Bluetooth functions (Profiles) which BlueSoleil supports in the Server device role. See chart in the 3.1 Bluetooth Functions.
- Depending on your system, multiple icons for Serial COM ports may appear.

3. After you have started the service in BlueSoleil, now you are ready to initiate the connection from the remote device. For instructions, refer to the user documentation for the remote device.

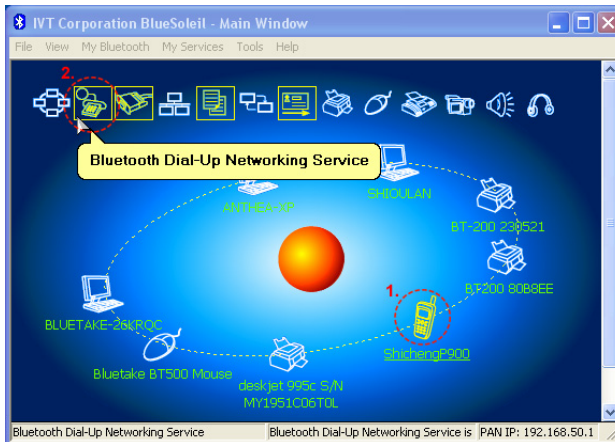
3.5.2 Initiate the Connection

If you would like to use your computer as a client in a Bluetooth connection, make sure that you have started (enabled) the service on the remote device. Otherwise, BlueSoleil will not be able to discover the service and connect to it. For instructions, refer to the device's user documentation.

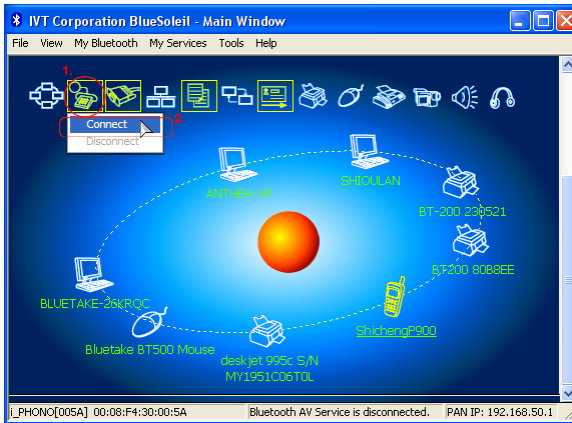
1. Return to the Main Window. *Click View | Main Window.*



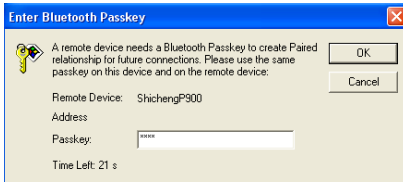
2. Double-click on the icon for the device you wish to connect to. BlueSoleil will begin to search for information about which services the device supports.



3. After the search, icons will be highlighted (yellow) at the top of the BlueSoleil Main Window for services that are supported by the device. Verify that the service you want to use is supported.
4. Right-click on the device icon. In the pop-up menu, click Connect, then select the service. BlueSoleil will start the connection. Depending on the security settings of each device, you may need to enter the same passkey on each device in order to bond the two devices.



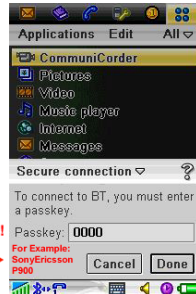
5. A screen may appear asking if you want to set up automatic connections. Click Yes or No.
6. If you are connecting to a phone, your phone may ask if you want to ask the BlueSoleil computer to your device list. Enter "Yes" and enter a passkey.



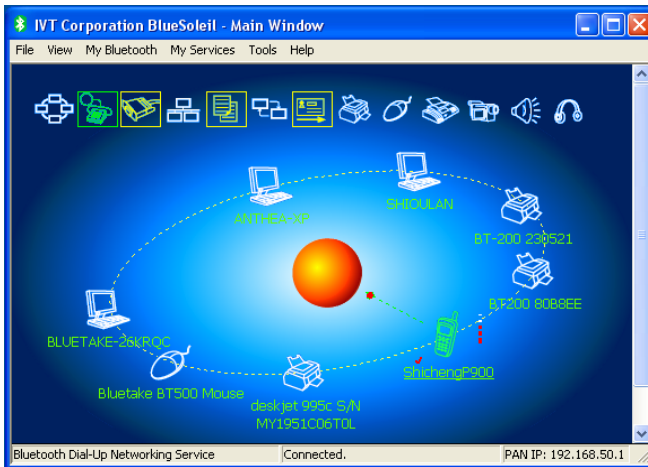
↑ Passkey request message for the computer (as a sever)

Enter the same passkey for both devices (server and client)!

Passkey request message for the mobile phone (as a client) →



- When the devices have successfully connected, the device icon in the Main Window will turn green, and a green line will appear between the red ball and the device icon. A red dot will travel along the green line from the client to the server. A signal strength icon will also appear next to the device icon.

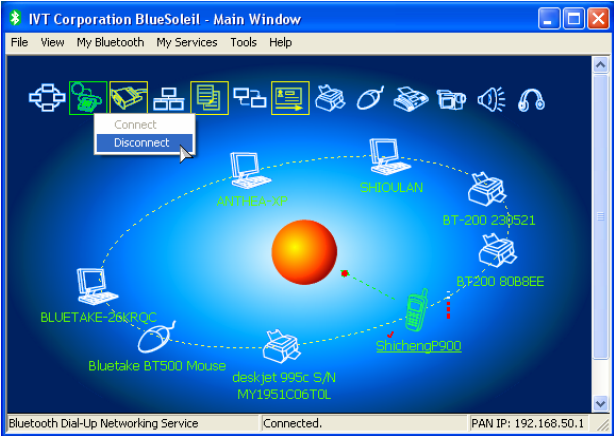


The BlueSoleil icon in the task tray will also turn green to indicate an active connection.

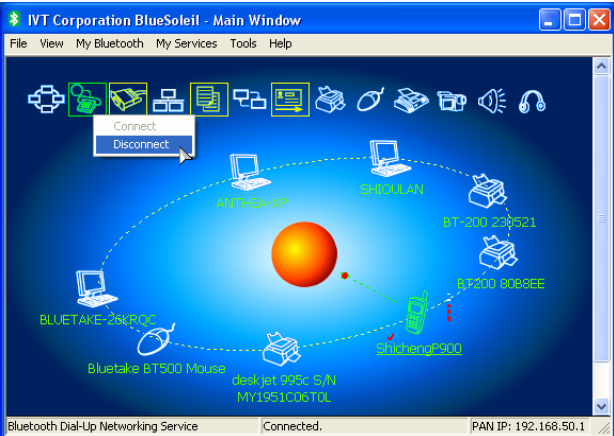
Note: A red check mark will appear next to the name of any device that you have previously paired with your computer.

- Depending on which services you are using, additional screens may appear, and/or you may need to configure additional connection settings (e.g., user name, password, COM port number, etc.). Refer to the instructions in Chapter 3 for your specific service. After configuring the appropriate connection settings, you should be ready to use your application.
- To end a connection, in the Main Window, right-click on the icon for a connected device. In the pop-up menu, click Disconnect.

BLUETAKE BT007Si / BT009Si Bluetooth USB Adapter – User Manual

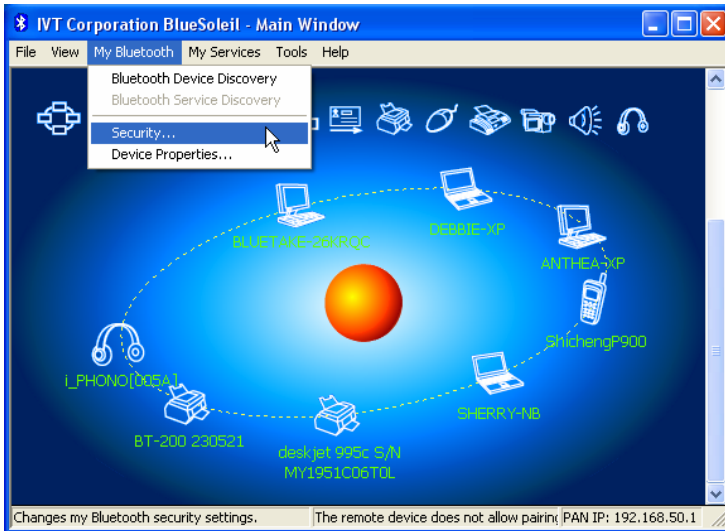


Note: You can only disconnect this way if your computer is acting as a client device. If your computer is acting as a server device, then you can disconnect in BlueSoleil by clicking *View | Service Window*, then right-clicking on the service icon. In the pop-up menu, click *Stop Service*. Alternatively, you can disconnect from the remote device.



3.6 Bluetooth Security

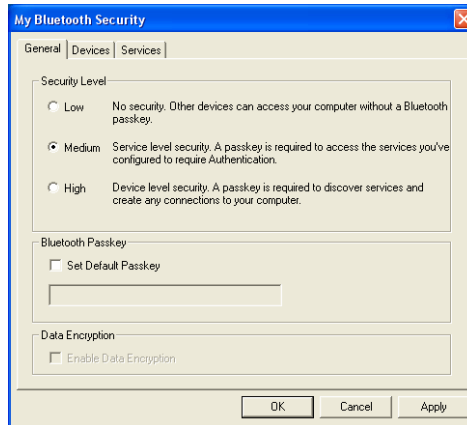
To modify your connection's security settings, click *My Bluetooth | Security*.



BlueSoleil offers three security levels:

- **Low** (Security Mode 1, Non-secure)
No security procedure is needed for connections.
- **Medium** (Security Mode 2, Service level enforced security)
Authentication or Authorization is requested when a specific service is accessed by other Bluetooth enabled devices. If two devices are connecting for the first time, or if two devices do not have a trusted relationship, then the same passkey must be provided on both sides to complete the Authentication. This mode allows you to assign different access rights for each service supported by the server device.
- **High** (Security Mode 3, Link level enforced security)
If either of two devices is in Mode 3, Authentication is requested whenever a link connection is initiated between two Bluetooth enabled devices. The passkey must be provided on both sides to complete Authentication.

BLUETAKE BT007Si / BT009Si Bluetooth USB Adapter – User Manual



Note: In Security Mode 2, the user can add each authenticated device into a trusted device list to expedite future connections.

4. Bluetooth Service Usage

4.1 AV Headphone

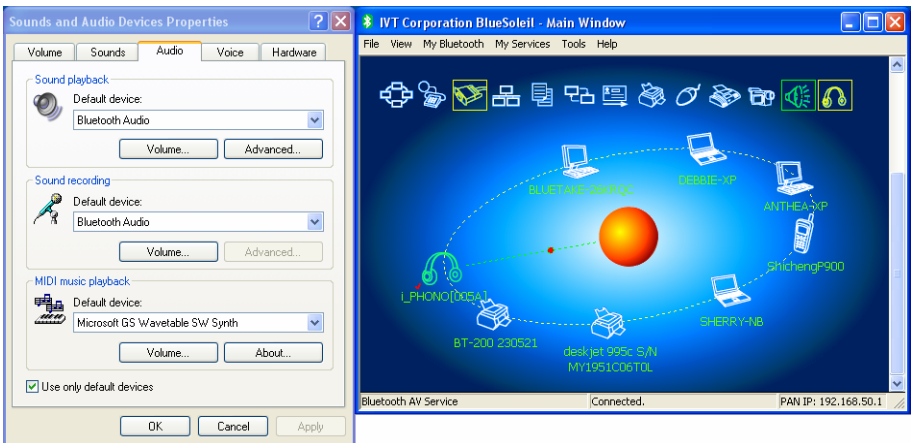
The AV Headphone Profile enables use of a Bluetooth enabled headphone to listen to high-quality stereo music played on a computer.

Typical Usage

- Listen to music using a Bluetooth enabled AV headphone.

Step 1: Connect to the AV headphone, following the instructions in Chapter 3.

Step 2: Play music using media player software on your computer. Music will transmit wirelessly to the headphone.



4.2 Basic Imaging

The Basic Imaging Profile (BIP) enables users to receive pictures from a Bluetooth enabled digital camera, mobile phone, or other compatible device. It also enables remote control of shooting, display, and other imaging functions.

Typical Usage

- Control camera to take pictures
- Receive pictures sent from BIP-enabled digital devices

- Control Camera to Take Pictures

- Step 1: Connect to the camera, following the directions in Chapter 3. A Bluetooth Camera Controller will appear, Figure 4.1.

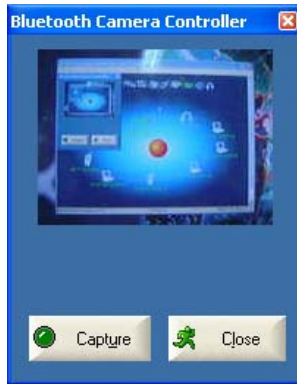


Figure 4.1 Bluetooth Camera Controller

- Step 2: Click the button to capture the image. The captured image will be transmitted to your computer and displayed.

- Receive Pictures

- Step 1: Assign the directory where you would like to save image files pushed from the client device. Click My Services | Properties. Click on the Basic Image Push tab. In the Set the image directory field, browse to select the file location. Click OK.
- Step 2: Start the BIP service, following the directions in Chapter 3.
- Step 3: Send pictures from the remote device. For instructions, refer to the user documentation for the remote device.

4.3 Dial-up Networking

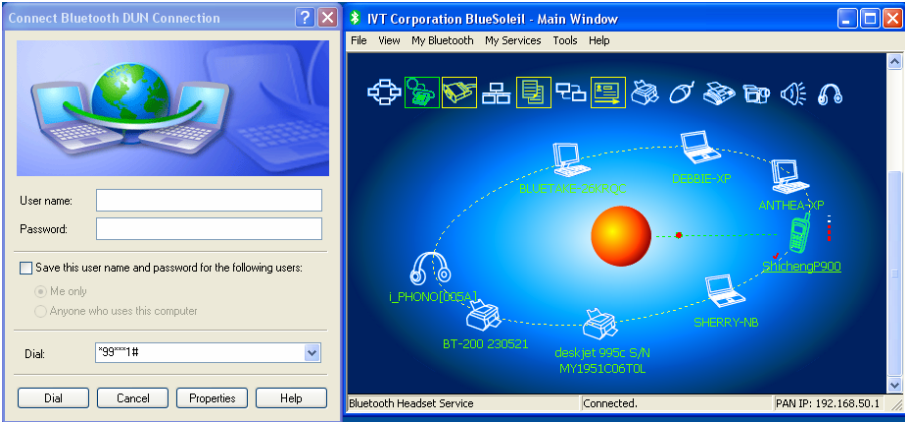
The Bluetooth Dial-up Networking (DUN) Profile enables users to wirelessly dial-up to the Internet through a Bluetooth enabled modem or mobile phone that supports the DUN Profile.

Typical Usage

- Dial-up to the Internet via a Bluetooth enabled mobile phone.
- Dial-up to the Internet via a Bluetooth enabled modem.

- Dial-up to the Internet via a Bluetooth enabled mobile phone.
 - Step 1: Connect to the phone's Dial-Up Networking Service, following the instructions in Chapter 3.
 - Step 2: The Dial-Up Dialog will appear. Enter the dial-up number, User name, and Password. Make sure the correct dial-up number is entered, then click on the Dial button.
Note: The default dial-up number *99***1# only works with certain GPRS phones and service providers in the United States. If necessary, enter the correct dial-up number for your Internet Service Provider (ISP).

BLUETAKE BT007Si / BT009Si Bluetooth USB Adapter – User Manual



Note: After you successfully connect, you can also select **Save Connection As Shortcuts** to create a desktop dial-up shortcut. This would allow you to conveniently dial up and connect by simply clicking on the shortcut, without having to manually start BlueSoleil.

- Dial-up to the Internet via a Bluetooth enabled modem.

- Step 1: Connect to the modem's Dial-Up Networking Service, following the instructions in Chapter 3.
- Step 2: The Dial-Up Dialog will appear. Enter the dial-up number, User name, and Password. Enter the correct dial-up number, then click on the Dial button.

Note: The default dial-up number *99***1# does NOT work with modems. You need to enter the correct dial-up number for your Internet Service Provider (ISP).

- Step 3: Use your email, Internet browsing or other application that utilizes a dial-up connection.

4.4 FAX

The Bluetooth Fax Profile enables users to send faxes from a computer via a Bluetooth enabled mobile phone or modem.

Typical Usage

- Send fax via a Bluetooth enabled mobile phone.
- Send Fax via a Bluetooth enabled modem.

- Send fax via a Bluetooth enabled mobile phone
 - Step 1: Connect to the mobile phone's fax service, following the directions in Chapter 3.
 - Step 2: Use your fax software to send the message.

- Send fax via a Bluetooth enabled modem
 - Step 1: Connect to the modem's fax service, as described in Chapter 3.
 - Step 2: Start your fax software. Configure your fax software for the Bluetooth Fax Modem (NOT the Bluetooth Modem). Refer to your fax software's user documentation for instructions.
 - Step 3: Use your fax software to send the message.

4.5 File Transfer

The File Transfer Profile (FTP) enables users to transfer files and/or folders between Bluetooth enabled laptops, desktops, PDAs, mobile phones, etc.

Typical Usage

- Connect to a Bluetooth enabled mobile phone and transfer files or folders to/from the phone.
- Share a folder on your computer with other Bluetooth enabled devices.
- Access a shared folder on another Bluetooth enabled device.