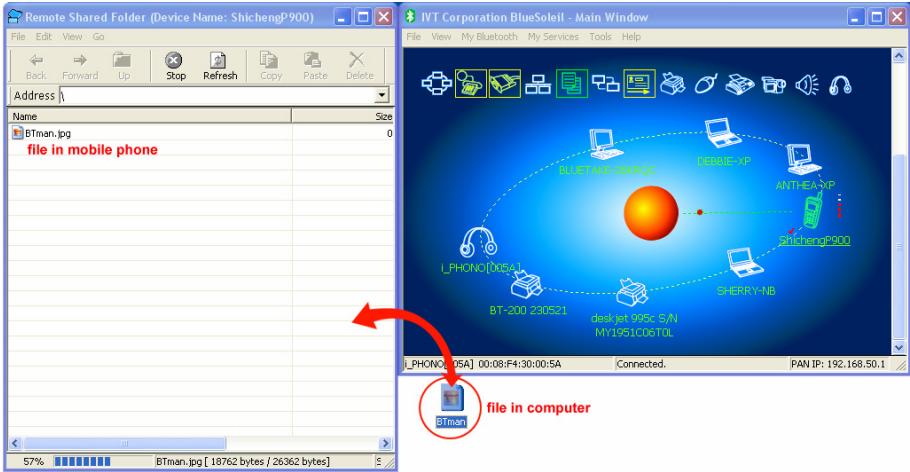


- Connect to a Mobile Phone

- Step 1: Connect to the mobile phone's FTP service, following the instructions in Chapter 3.
- Step 2: The phone's folders are shown in a window. Users can copy/paste/delete files or folders.

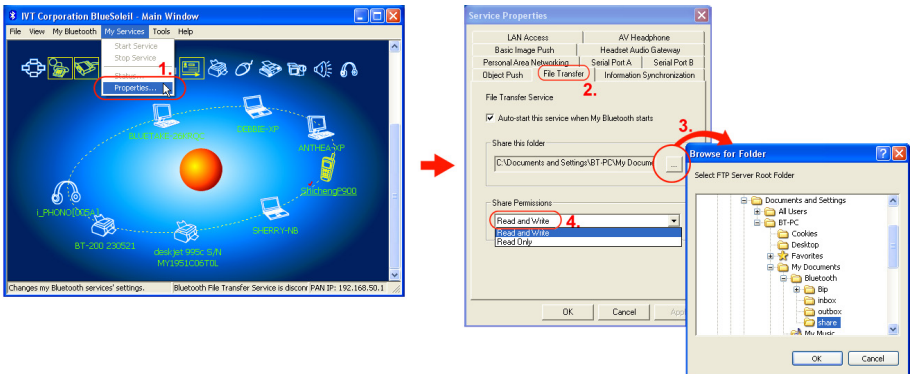


- Share a Folder on Your Computer with other Bluetooth Enabled Devices

- Step 1: Select the folder you would like to use for file sharing and define the remote user privileges. Click My Services | Properties. Click on the File Transfer tab. Share this folder: Browse to select the folder you would like to share. Share Permissions: Select Read and Write to allow others to copy, paste or delete files/folders in this folder. Select Read Only to allow others to only browse and copy files/folders from this folder.
- Step 2: Start the FTP service in BlueSoleil, following the instructions in Chapter 3. Do not initiate the connection in BlueSoleil.
- Step 3: Browse your computer from the remote device. For

instructions, refer to the user documentation for the remote device. When the remote device attempts to connect to your computer, the Bluetooth Service Authorization screen may appear. Click Yes.

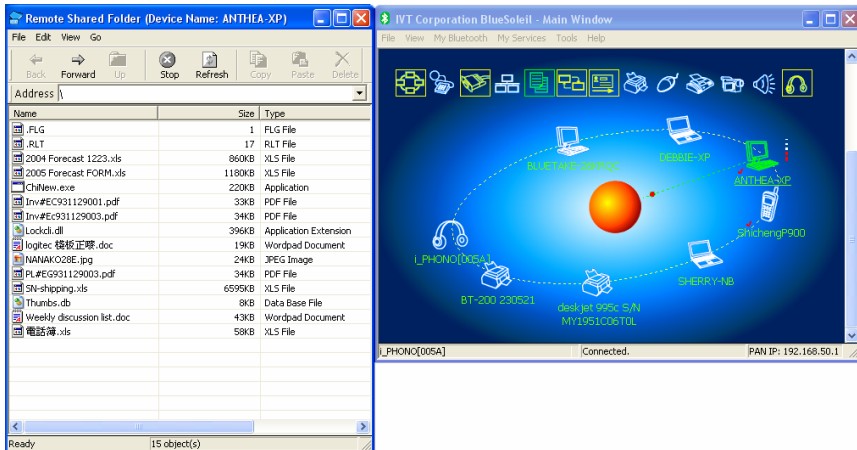
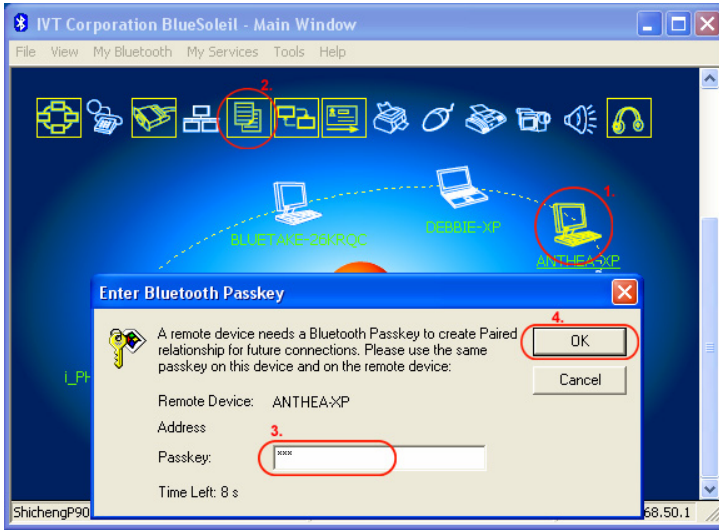
- Step 4: After successfully connecting, the remote device can browse, copy, paste, and/or delete files on your computer, depending on the remote folder privileges you allowed. For instructions, refer to the user documentation for the remote device.



- Access a Shared Folder on another Bluetooth Enabled Device

- Step 1: On the remote device, designate the folder/files to share. Enable file sharing on the remote device. For instructions, refer to the user documentation for the remote device. Note: If you do not enable file sharing on the remote device, BlueSoleil will not be able to discover the device's file sharing service.
- Step 2: Start the FTP service and initiate the connection in BlueSoleil, following the instructions in Chapter 3.
- Step 3: A Remote Shared Folder screen will appear, displaying shared files/folders on the remote device, Use the screen to browse, copy, paste, and/or delete files, depending on your folder privileges.

BLUETAKE BT007Si / BT009Si Bluetooth USB Adapter – User Manual



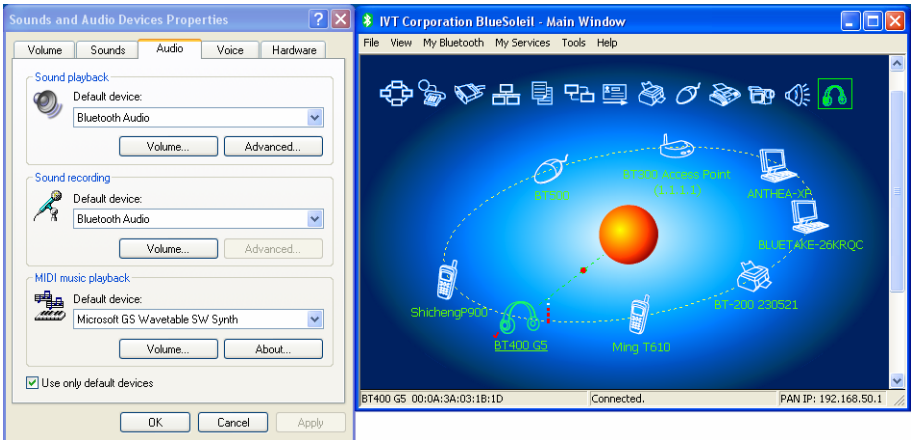
4.6 Headset

The Headset Profile enables users to use a Bluetooth enabled headset as wireless earplug or microphone.

Typical Usage

- Use Headset as a device for audio input/output.

- Step 1: Connect to the Bluetooth enabled headset, following the directions in Chapter 3.
- Step 2: Play music on your computer, or chat using network meeting tools. You may need to press a multifunction button on your headset to transmit audio between the computer and the headset.



Note: For most Bluetooth enabled headsets, after you have successfully connected for the first time, you can quickly reconnect to BlueSoleil by simply pressing a multifunction button on the headset.

4.7 Human Interface Device

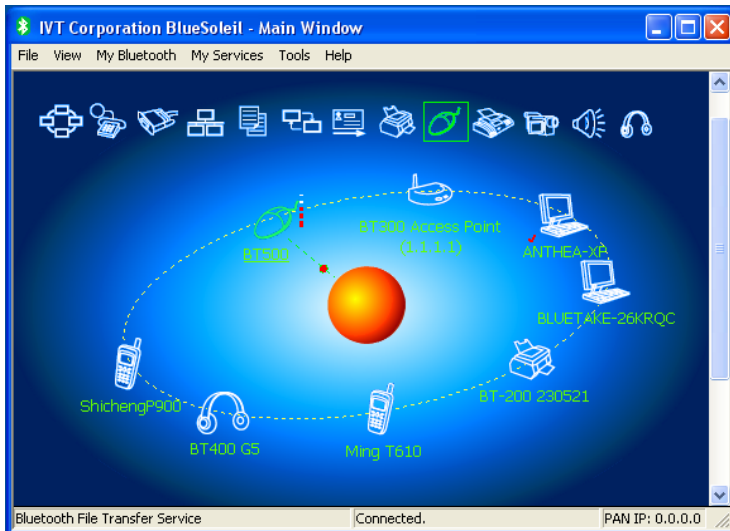
The Bluetooth Human Interface Device (HID) Profile enables users to use Bluetooth enabled HID Devices such as keyboards, mice or joysticks to control your computer.

Typical Usage

- Connect a Bluetooth enabled Mouse and a Keyboard to Your Computer

Step 1: Connect the Bluetooth enabled mouse to your computer, following the instructions in Chapter 3.

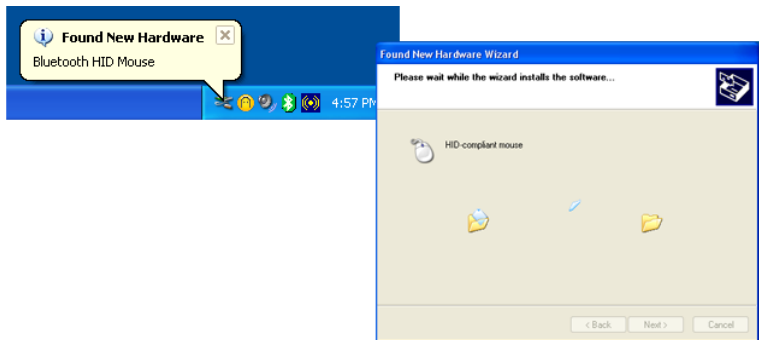
Step 2: Connect the Bluetooth enabled keyboard to your computer, following the instructions in Chapter 3. Before you can use BlueSoleil to connect, you may need to press a button on the keyboard to make it discoverable.



Note:

- The first time you connect the mouse or keyboard to your computer, the Found New Hardware Wizard will automatically launch. In the first screen of the wizard, **DO NOT INSERT ANY CD** and click **Next**. Follow the next

screens until you complete the wizard. If the wizard reappears, cancel the wizard. You should be able to use the mouse or keyboard with your computer.



- The Bluetooth enabled mouse/keyboard can automatically re-connect to your computer after you successfully establish the initial connection.

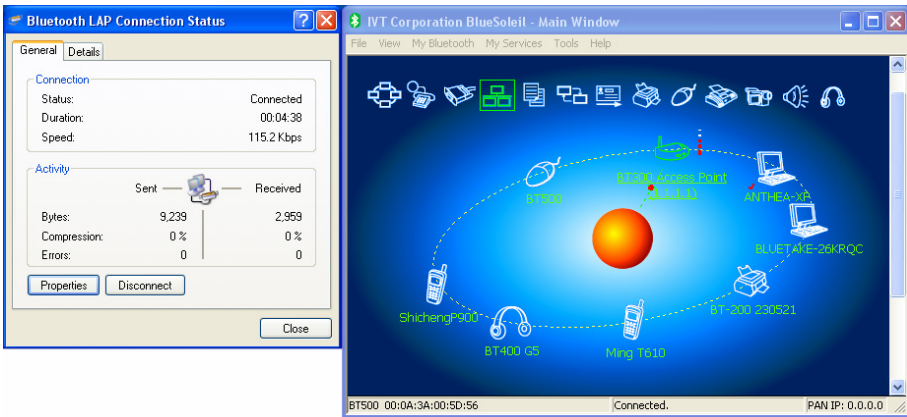
4.8 LAN Access

The Bluetooth LAN Access Profile (LAP) allows users to access a Local Area Network (LAN) via a Bluetooth enabled LAN access point.

Typical Usage

- Access a Local Area Network via a Bluetooth enabled LAN access point.
- Use your computer as a LAN Access Point.
- Access a LAN via a Bluetooth enabled Access Point (AP)
 - Step 1: Connect to the LAN AP's LAP service, following the instructions in Chapter 3.
 - Step 2: In the Connect Bluetooth LAP Connection dialog, enter the user name and password if necessary. Click Connect.

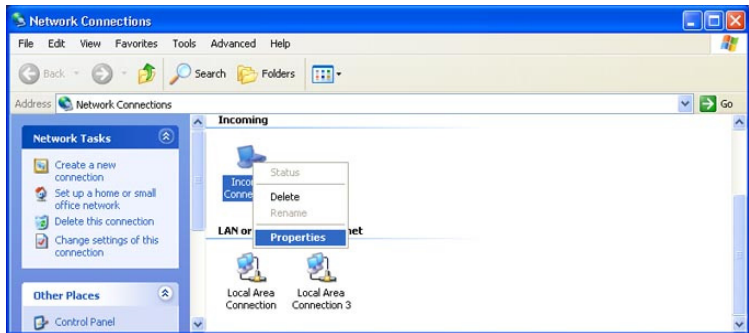
BLUETAKE BT007Si / BT009Si Bluetooth USB Adapter – User Manual



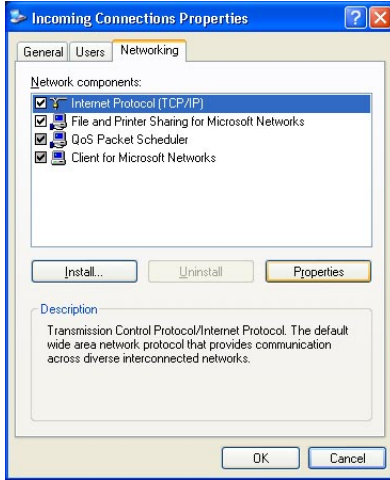
Use your computer as a LAN Access Point (ADVANCED USERS ONLY)

- Step 1: Start the Bluetooth LAN Access service on BlueSoleil, following the instructions in Chapter 3.
- Step 2: Specify any static IP addresses necessary for LAP clients. (Alternatively, you can use DHCP to have the system dynamically assign IP addresses).

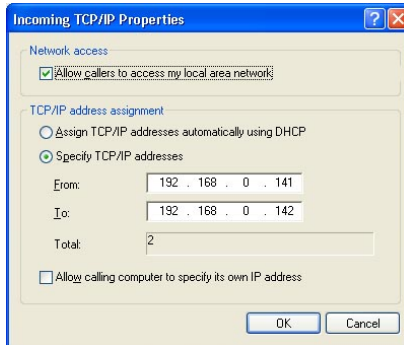
- (1) In the Network Connections window, right-click Incoming Connection, then select Properties.

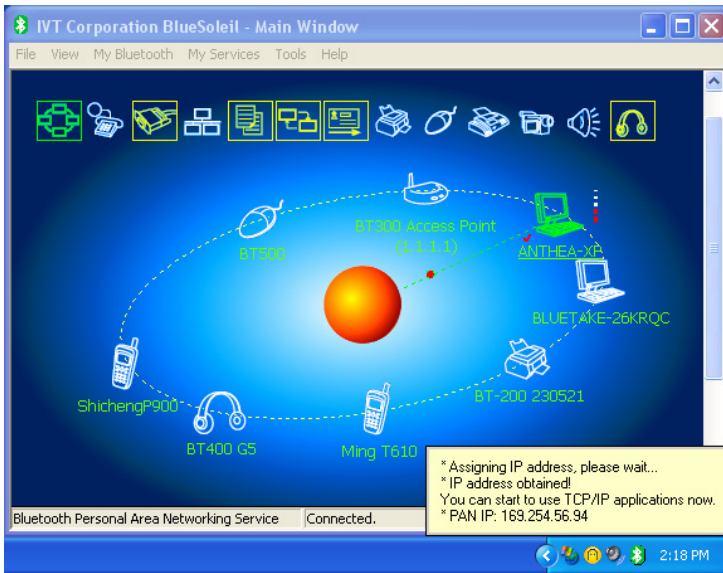


- (2) Select *Incoming Connections Properties | Networking -> Internet Protocol (TCP/IP)*, and click on the Properties button.



- (3) Select Specify TCP/IP addresses and enter the range of IP addresses assigned to LAP clients.





Note:

In order to use a Windows 98SE/Me system as an access point, you must have already installed a Dial-up Adapter and the Windows Direct Cable Connection component on the system.

4.9 Object Push

The Bluetooth Object Push Profile (OPP) enables users to send and receive Personal Information Management (PIM) data objects (including messages, notes, calendar items, and business cards) to and from a Bluetooth enabled PDA or mobile phone.

The objects supported include:

- Contacts (*.vcf)
- Calendar items (*.vcs)
- Notes (*.vnt)
- Messages (*.vmg)

Typical Usage

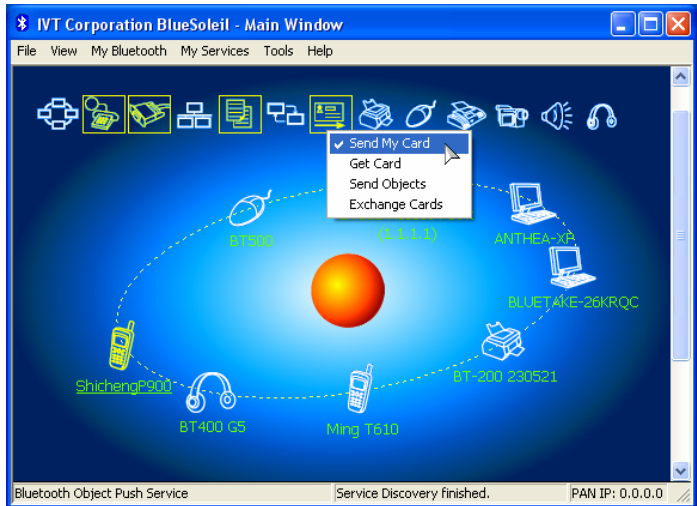
- Push objects to a Bluetooth enabled mobile phone or PDA
- Receive objects from a Bluetooth enabled mobile phone or PDA

Note: If you would like to push PIM objects to a PDA, make sure that the PDA is ready to receive a PIM object before you start. If necessary, enable Object Push on the PDA. For instructions, refer the PDA's user documentation.

- Push Objects to a Bluetooth Enabled Mobile Phone

There are two methods to push objects:

- Method 1: From BlueSoleil Main Window: Double-click on the mobile phone or PDA icon to browse for service information. The Object Push Service icon should be highlighted at the top of the screen. Right click the Object Push Service icon, and in the pop-up menu click Send My Card.



Send My Card:
Send your default business card.

Get Card:

Get the phone's default business card.

Send Objects:

Select objects (PIM files ending in .vcf, .vcs, .vnt, or .vmg) and send them to the phone.

Exchange cards:

Have your computer and the phone to exchange their default business cards.

Method 2: From MS Outlook:

(1) Select the contact that you would like to send.

(2) In Outlook, click on the Push button on the toolbar, or click *File | Push*.

(3) The Bluetooth Neighbors screen will appear. In the device list, select the phone or PDA that you wish to push the contact to. Click on the Push button.

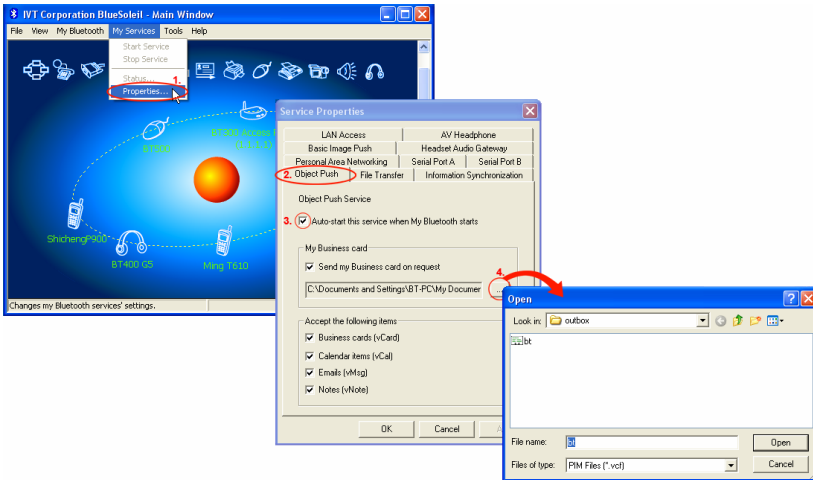
- Receive Objects from a Bluetooth Enabled Mobile Phone

Step 1: Configure the parameters for the object push. From the Main Window, click *My Services | Properties*. Click on the Object Push tab.

Step 2: Start the Object Push service, following the instructions in Chapter 3. Do not initiate a connection, only start the service so that your computer will be ready to receive objects.

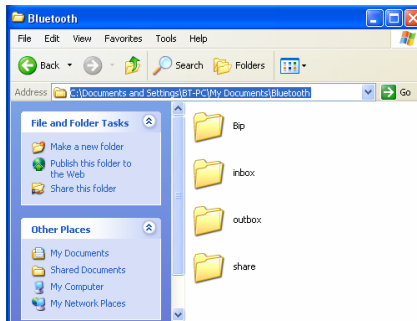
Step 3: Send objects from the phone. For instructions, refer to your phone's user documentation.

BLUETAKE BT007Si / BT009Si Bluetooth USB Adapter – User Manual



Notes:

- BlueSoleil creates a Bluetooth folder (with Inbox and Outbox subfolders) in your My Documents folder for use with Object Push. The Inbox is used to save objects received from other devices. The Outbox is used to save objects sent out from your computer.



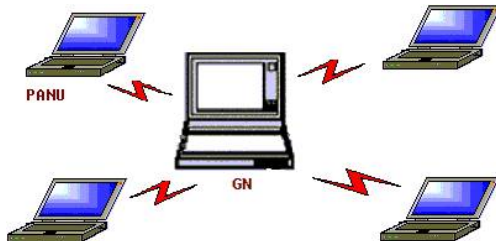
- You can set your default business card by clicking *My Services | Object Push*. In the Send My Business Card field, browse to select a contact as your default business card.

4.10 Personal Area Networking

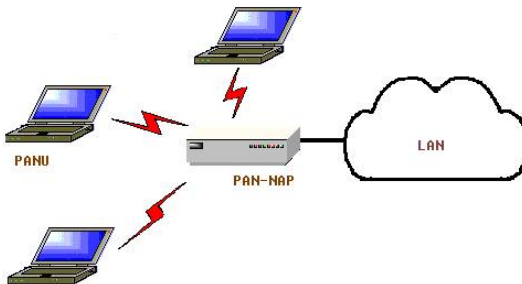
The Bluetooth Personal Area Networking (PAN) Profile enables PCs, laptops, PDAs, and other Bluetooth enabled devices to form either of two kinds of PAN networks. In a Group ad-hoc Network (GN), which functions as an isolated network, multiple PAN Users (PANUs) are linked together via a GN controller. Alternatively, a PAN can consist of multiple PANUs linked to a Network Access Point (NAP), which provides access to external Local Area Network (LAN) infrastructure. BlueSoleil supports all three of these device roles — GN (controller), PANU, and NAP.

Typical Usage

- Group Ad-hoc Network (Peer-to-peer networking)
One device acts as the GN, and others function as PANU devices. These computers can visit each other or use an application based on TCP/IP.



- Access a LAN via a Network Access Point (or a Computer Acting as a NAP)
After the computers connect to the NAP, they become members of the LAN and can directly communicate with other computers in the LAN.



- Connecting the PAN User (PANU)

- Step 1: Connect to the server's Personal Area Network service, following the instructions in Chapter 3.
- Step 2: Wait a few seconds for BlueSoleil to obtain and display your computer's IP address.

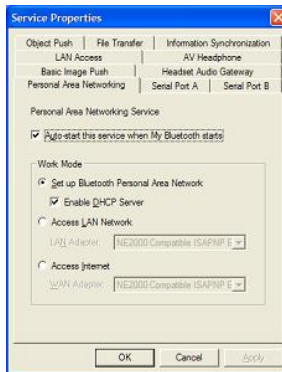
- Configuring the NAP/GN

Click MY Service | Properties, and click on the Personal Area Network tab.

Scenario 1 Group Ad-hoc Network

Select Set up Bluetooth Personal Area Network and Enable DHCP Server.

A DHCP server will be started on the GN. The PANU can obtain an IP address automatically from this DHCP server if the PANU does not set static IP address for the Bluetooth Network Adapter.



Scenario 2 Access LAN via PAN-NAP

Select Access LAN Network and select a physical network adapter, through which the NAP connects to a LAN, as the LAN Adapter.

BLUETAKE BT007Si / BT009Si Bluetooth USB Adapter – User Manual



Scenario 3

Access the Internet via NAP

Select Access Internet and select a physical network adapter, through which the NAP connects to Internet, as the WAN Adapter. It will automatically enables NAT (Network Address Translation, please refer to Windows Help Topic) function and a DHCP server.

Note: The BT Network Adapter on the PANU side must be set to obtain an IP address automatically. The IP address is in the form of 192.168.50.xxx, such as 192.168.50.1.

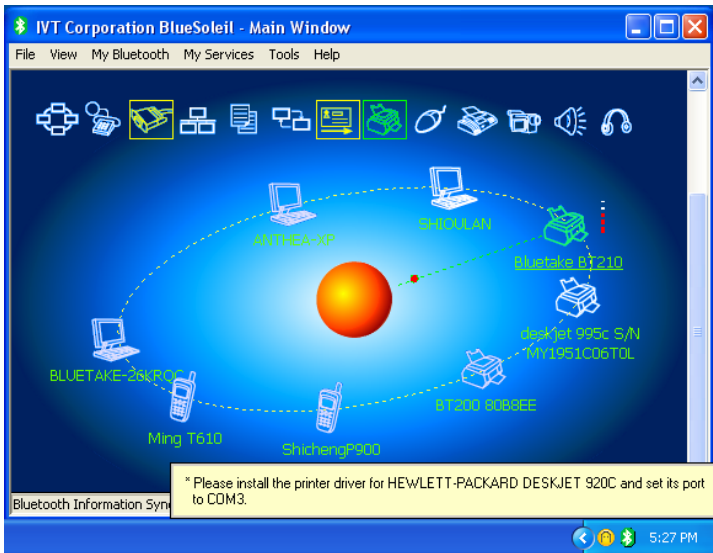


4.11 Printer

The Bluetooth Printer Profile (HCRP) enables your computer to connect to a Bluetooth enabled printer.

Typical Usage

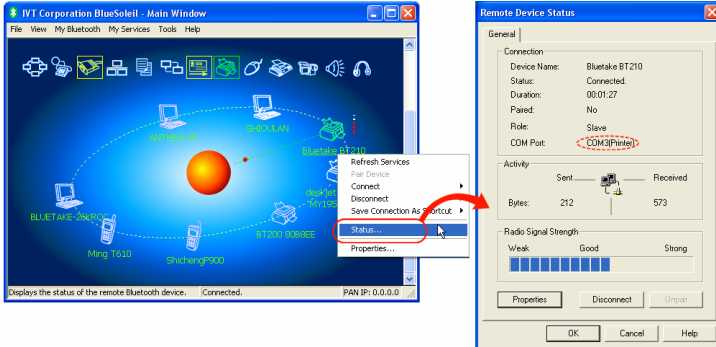
- Print documents on a Bluetooth enabled Printer.
- Step 1: Connect to the printer's printer service.



(a) If your computer does not have the correct printer drivers installed, BlueSoleil will prompt you to do so.

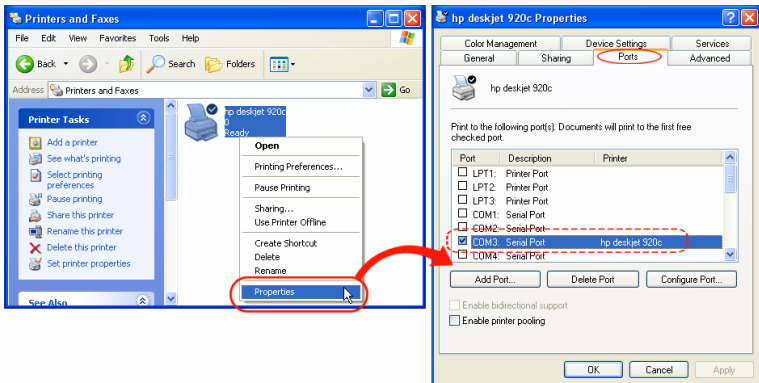
Install the driver for the printer, and remember to set the printer port to the correct COM port number. To determine the correct COM port number, in the Main Window, right-click on the device icon. In the pop-up menu, select Status.

BLUETAKE BT007Si / BT009Si Bluetooth USB Adapter – User Manual



(b) If the printer driver has been installed, a message indicates that the printer is ready.

Step 2: Print documents using the Bluetooth enabled printer. In the application, be sure to select the correct printer and printer port.



Notes:

The COM port used by the Bluetooth enabled printer may be different from this instruction depends on the actual computer system configurations.

4.12 Serial Port

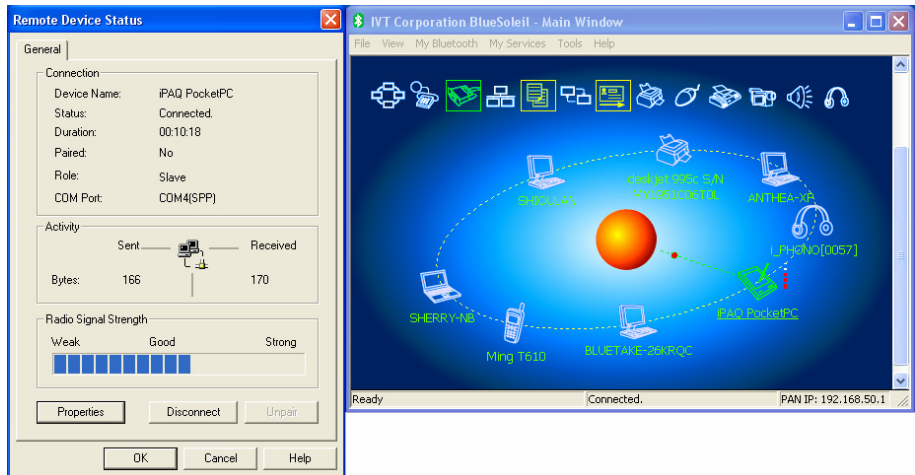
The Bluetooth Serial Port Profile (SPP) provides PCs, laptops, PDAs, GPS receivers, cordless serial adapters, and other Bluetooth enabled devices with a virtual serial port, enabling them to connect with each other wirelessly via Bluetooth instead of with a serial cable.

BlueSoleil supports four Bluetooth Serial Ports for outgoing connections and two Bluetooth Serial Ports for incoming connections.

Typical Usage

- Connect to other Bluetooth enabled devices via the Serial Port
- Connect to a PDA

- Step 1: Connect to the PDA's Serial Port service, following the instructions in Chapter 3.
- Step 2: Use ActiveSync or any other application that uses a serial connection.



Note:

- Serial Port Auto-Connection function
Once a target device is assigned to a specific serial port, (e.g., COM5), whenever an application opens that serial port number, BlueSoleil will

automatically connect to the target device. Similarly, whenever an application closes the Bluetooth serial port, BlueSoleil will stop the connection. To check which devices are assigned to which COM ports, click *Tools | Configurations | Quick Connect*.

- Some applications only allow you to use a limited range of COM port numbers. If the application does not allow you to use a COM port number assigned by BlueSoleil, you will not be able to use BlueSoleil with your application.

4.13 Bluetooth Synchronization

The Bluetooth Synchronization (SYNC) Profile enables users to synchronize PIM objects on their computer with that of other Bluetooth enabled computers as well as Bluetooth enabled mobile phones, PDAs, and other devices.

Four kinds of objects are supported:

- Contacts (*.vcf)
- Calendars (*.vcs)
- Notes (*.vnt)
- Messages (*.vmg)

Supported MS Outlook versions: Outlook 2000, Outlook 2002 (xp), Outlook 2003.

Typical Usage

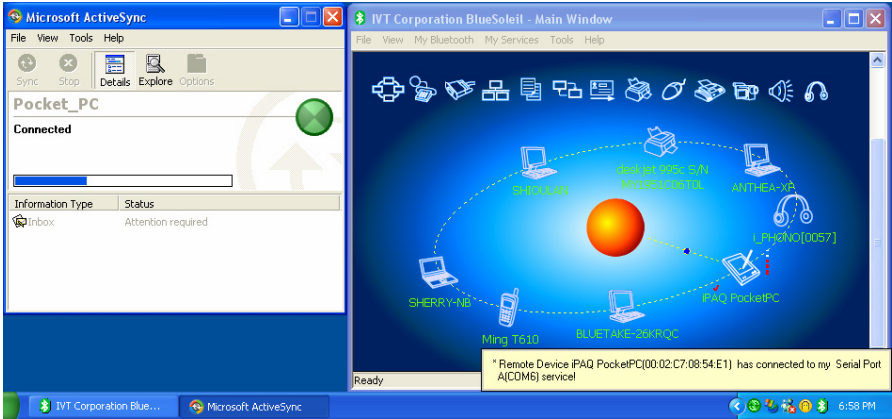
- Synchronize your computer with a Bluetooth enabled mobile phone

Step 1: Connect to the mobile phone's Synchronization service, following the instructions in Chapter 3.

Step 2: A synchronization dialog will appear. Click on the Start button to synchronize. Contacts, calendars, notes and emails in MS Outlook will be synchronized with those on the phone.

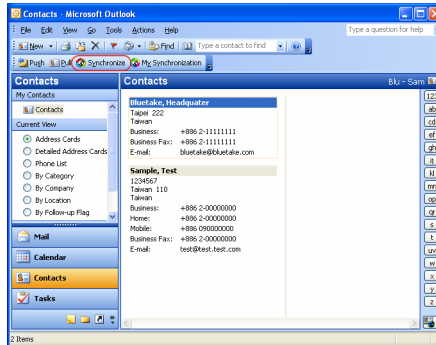


BLUETAKE BT007Si / BT009Si Bluetooth USB Adapter – User Manual



Note:

- Users can start synchronization from MS Outlook using the Bluetooth Add-In menus and buttons installed with BlueSoleil.



- BlueSoleil can act as synchronization server. Click *My Services* | *Properties*. Click on the Information Synchronization tab, and select the type of PIM objects that you would like to synchronize.

Appendix-1 Bluesoleil Manu

A-1.1 BlueSoleil Environment

A-1.1.1 Main Window

The Main Window displays the local device (red ball) and the remote devices detected in range. Connecting and disconnecting operations are conducted here. Connections are indicated by green dashed lines between the local device and connected remote devices.

By default BlueSoleil starts with the Main Window open. To return to the Main Windows after switching views, click *View | Main Window*.



Local Bluetooth Device

The Local Bluetooth enabled device, known as "My Device," represents the user's computer that is running BlueSoleil.







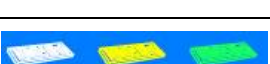












Operations

- Hover your mouse over the red ball to display the local device's Bluetooth name and address.
- Click on the red ball to start or stop searching for Bluetooth devices in range.
- Right-click on the red ball to display a pop-up menu of related operations (e.g., General Inquiry, My Services, Security, etc.).

Remote Bluetooth Devices

Remote devices are other Bluetooth enabled devices that are in the radio range of your local device. BlueSoleil uses different icons to indicated different types of remote devices.

BLUETAKE BT007Si / BT009Si Bluetooth USB Adapter – User Manual

Personal Computer		Laptop	
Modem		Mobile Phone	
PDA		LAN Access Point	
Keyboard		Mouse	
Microphone		HiFi Audio	
Loud Speaker		Headset	
Printer		Scanner	
Fax		Camera	
Game controller		Server	
Unknown device			

Icon Meanings

Remote devices can be in any of three states, which BlueSoleil indicates with different colors.

- White — Idle. The normal state of the device.
- Yellow — Selected. You have selected the device.
- Green — Connected. The device is connected to your computer.

Operations

- Single-click on the icon to select.
- Double-click on the icon to search for the services supported by the remote device.
- Right-click on the icon to display a pop-up menu of related operations (e.g., Refresh Devices, Pair Devices, Connect, etc.).

Bluetooth Service Buttons of Remote Device

Service buttons at the top of the Main Window represent a range of Bluetooth services potentially supported by Remote Devices.

PAN		DUN	
SPP		LAP	
FTP		SYNC	
OPP		HCRP	
HID		FAX	
BIP		AV	
Headset			

Icon Meanings

There are 3 states for the service icons, indicated by different colors.

- White — Idle. The normal state.

- Yellow — Available. The Bluetooth service is available on the selected remote device.
- Green — Connected. The Bluetooth service is active in a connection with the remote device.

Operations









- Hover your mouse over the service icon to display the name of the service.
- Single-click on the service icon to connect.
- Right-click on the service icon to display a pop-up menu of related operations.

A-1.1.2 Service Window

The Service Window displays the local Bluetooth services, (i.e., the Bluetooth services supported by BlueSoleil). Use the Service Window to start and stop services, as well as to configure service properties. To access the Service Window, click View | Service Window.

Local Service List

The Local Service List displays all of the Bluetooth services supported by the local computer. Use this screen to start/stop services.

Services	Icons	Services	Icons
PAN		SPP	
OPP		FTP	
SYNC		LAP	
AV		BIP	

Headset AG			
---------------	---	--	--

Icon Meanings

There are 3 states for the local Bluetooth services, indicated by different icon colors.

- White – Idle. The service has not been started.
- Yellow – Started. The local Bluetooth service has been started.
- Green – Connected. Some remote device has connected to the service.

Operations

- Single-click on the icon to select the service.
- Double-click on the icon to Start/Stop a service.
- Right-click to display a pop-up menu of related operations.

A-1.1.3 Menus

BlueSoleil contains the following six menus:

- File Menu
- View Menu
- My Bluetooth Menu
- My Services Menu
- Tools Menu
- Help Menu

File Menu

- Hide --- Hide the BlueSoleil window. Connections can still run when the window is hidden.
- Always on Top --- Keep the BlueSoleil window always on top.
- Exit --- Exit BlueSoleil.

You can also exit BlueSoleil by right-clicking on the task tray icon at the bottom of your screen. In the pop-up menu, click Exit.

View Menu

- Main Window --- Show the BlueSoleil Main Window.

- Service Window --- Show the BlueSoleil Service Window.
- Arrange Devices --- Arrange remote devices by Device Name, Device Address, or Device Type
- Refresh Devices --- Refresh the list of remote devices detected by BlueSoleil.

Note: If you select Refresh Devices, the list of previously detected devices will not be cleared. To initiate a new device search that will first clear the list, press F5.

My Bluetooth Menu

- Bluetooth Device Inquiry --- Search for other Bluetooth enabled devices in range.
- Bluetooth Service Browsing --- Browse for the services of the selected remote device.
- Security --- Configure the security settings of the local device (e.g., passkey requirements, data encryption, etc.).
- Device Properties --- Configure the properties of the local device (e.g., device name, accessibility, etc.).

My Services Menu

- Start Service --- Start the selected local Bluetooth service.
- Stop Service --- Stop the selected local Bluetooth service.
- Status --- View the status of the selected local Bluetooth service.
- Properties --- Configure the properties of the local Bluetooth services (e.g., automatic connections, shared file locations, etc.).

Tools Menu

- My Bluetooth Shortcuts --- Display dialog My Bluetooth Shortcuts.
 - . Connect: Connect the selected shortcut.
 - . Delete: Delete the selected shortcut.
- Find Device --- Click to find a device, by either of two search criteria:
 - . By Bluetooth Device Address: Enter a Bluetooth device address, in standard format (xx:xx:xx:xx:xx:xx), and click on the Find button. The device with the specified address will appear highlighted in the Main Window.

- . By Name: Check the By Name box, enter the Name of the device, and click on the Find button. The device with the specified name will appear highlighted in the Main Window.
 - Add New Device --- Add a remote device by entering its Bluetooth device address.
 - Add Device From History --- Add a remote device from the history list.
 - . Add: Add the selected device.
 - . Delete: Clear the selected device from the history list.
 - Configurations->Quick Connect... --- If desired, assign a remote device to automatically connect with a Bluetooth serial port whenever an application opens the specified port.
 - . Assign: Assign a device to the selected port.
 - . Remove: Remove the Auto-Connection device assignment for the selected port.
 - Configurations-> Unplug HID --- Remove Human Interface Devices from BlueSoleil.
 - . Unplug: Unplug the selected HID device.
- When you first connect the HID device to your computer, BlueSoleil sets up the devices so that they will automatically reconnect in case the connection is ever broken. After you unplug an HID device, it will no longer automatically reconnect to your computer.
- My Bluetooth Device --- Advanced hardware configuration, recommended for advanced users only. Please refer to 4.2 Hardware Configuration for more details.

Help Menu

- Contents and Index --- Access BlueSoleil Online Help.
- About BlueSoleil --- Information about your version of BlueSoleil.

A-1.2 Device Configurations

A-1.2.1 Hardware Configuration

To access the hardware configuration screens, click *Tools | My Bluetooth Device...*,

Bluetooth Device

Select the type of Bluetooth enabled device that you plan to use.

Advanced Configuration

The Advanced Configuration page will be enabled only if you selected CF in the Bluetooth Device screen. Use the Advanced Configuration screen to configure detailed parameters including COM Port, Baud Rate, Byte Size, Parity, Stop Bits, and Flow Control.

A-1.2.2 Properties Configuration

To configure the properties of your local device, click *My Bluetooth | Device Properties...*,

General

- Device Name

The local device's name, which will be shown to other Bluetooth enabled devices.

- Device Type

The device type of your local computer, (i.e., Desktop, Laptop or Server).

- Device Address

The address of the local device. Every Bluetooth enabled device has a unique device.

Accessibility

- Connecting Mode
 - . Connectable: Permits other Bluetooth enabled devices to connect with your computer.
 - . Non-Connectable: Prohibits other Bluetooth enabled devices from connecting with your computer.

- Discovery Mode
 - . General Discoverable: Permits other Bluetooth enabled devices to detect your computer.
 - . Limited Discoverable: Permits other Bluetooth enabled devices to detect your computer with Limited Inquiry.
 - . Non-Discoverable: Prohibits other Bluetooth enabled devices from detecting your computer.

- Bonding Mode (Pairing Mode)
 - . Accepts Bonding: Allow other Bluetooth enabled devices to pair with your computer. If the other device initiates a pairing procedure with your computer, each device must enter the same passkey before the they will be paired.
 - . Does Not Accept Bonding: Rejects pairing attempts initiated by other Bluetooth enabled devices.

Hardware

View information about your Bluetooth hardware.

- Manufacturer: The manufacturer of the local Bluetooth device.
- HCI Version: The HCI version of the local Bluetooth device.
- HCI Edition: The HCI edition of the local Bluetooth device.
- LMP Version: The LMP version of the local Bluetooth device.
- LMP Subversion: The LMP subversion of the local Bluetooth device.

A-1.3 Security Configuration

Use the Security Configuration screens to specify the security settings of your local device.

A-1.3.1 Pair / Un-pair Devices

Once a remote device has paired with your computer by exchanging passkeys, passkeys will no longer be required for further connections between your computer and the device.

How to pair with another device

- Automatically

If a passkey is required for connection, the devices will be paired automatically the first time they successfully exchange passkeys and connect. After a device has successfully paired with your computer, the remote device icon in the Main Window will have a red checkmark next to it.

- Manually

In the Main Window, right click on the device icon, and in the pop-up menu, select Pair Device. In the Enter Bluetooth Passkey screen, enter the same passkey that you enter on the remote device. After a device has successfully paired with your computer, the remote device icon will have a red checkmark next to it.

How to un-pair with another device

In the Main Window, right-click on the device icon, and in the pop-up menu, select Unpair. The red checkmark next to the device icon will disappear.

A-1.3.2 General Security

To access the security configuration screen, click My Bluetooth | Security...

- Security Level

. Low

If checked, other devices will be able to access your device freely without entering a passkey.

However, if the remote device requires a passkey to connect, then both devices need to exchange passkeys.

. Medium

The medium level provides service level security. You can assign the appropriate level of access for each specific service. For more details, see A.3.4 Local Services Security.

. High

If checked, passkeys must be exchanged for every incoming and outgoing connection, unless the two devices have already paired in the past.

- Bluetooth Passkey
 - . Set Default Passkey
 - Use this setting to create a default passkey for all connections. This saves you the effort of manually creating a passkey whenever one is required.

- Data Encryption
 - . Enable Data Encryption
 - If checked, the data transmitted will be encrypted.

A-1.3.3 Managing Device Pairings

To access the device security configuration screen, click My Bluetooth | Security and click on the Devices tab.

Paired Devices

This screen lists devices which have already paired with the local device.

Remove Pairing

Click to remove the pairing relationship between the selected device and the local device.

Authorization

Click to select the local Bluetooth services that you wish to allow the selected paired device to use. A list of local services will appear. Select the services you wish to allow on the remote device, then click OK.

Note: The screen will only list the local services that require authentication. The local services that do not require authentication can be accessed freely. The Authorization button is enabled only when the Security Level is set to Medium.

A-1.3.4 Local Services Security

To access the local services security configuration screen, click My Bluetooth | Security and click on the Services tab. You can only configure security for local services when the Security Level is set to Medium. (Set the Security Level in the

General Security screen.)

Local Services:

- Authentication

If checked, a passkey is required whenever a remote device attempts to connect with this service.

- Encryption

If checked, data transmitted between devices for this service will be encrypted.

- Authorization

Click to select the devices you wish to allow to use the selected service.

In the Service Authorization screen, enter the following settings:

- Trusted Devices

Select to trust devices listed in this screen to use the selected service on your device.

A device can freely access the service from your local device when trusted. Click Add/Remove to edit the device list.

- Trust all devices

Connection requests will be accepted from every device.

- Prompt user if the device is not trusted for this service

If a non-trusted device attempts to access the service, a dialog will appear to allow you to accept or reject the connection.

- Reject devices from using the service if not trusted for the service

If a non-trusted device attempts to access the service, the connection will be rejected automatically without informing the user.

Notes: If a device is trusted for a service, it may connect to this service on your local device without informing you.

Federal Communications Commission (FCC) Statement

RADIO FREQUENCY INTERFERENCE STATEMENT

This device complies with Part 15 of the FCC rules. Operation is subject to the following two conditions: 1) this device may not cause harmful interference, and 2) this device must accept any interference received, including interference that may cause undesired operation.

This equipment has been tested and found to comply with the limits for a Class B digital device, pursuant to Part 15 of the FCC rules. These limits are designed to provide reasonable protection against harmful interference in a residential installation. This equipment generates, uses and can radiate radio frequency energy and if not installed and used in accordance with the instructions, may cause harmful interference to radio communications. However, there is no guarantee that interference will not occur in a particular installation. If this equipment does cause harmful interference to radio or television reception, which can be determined by turning the equipment off and on, the user is encouraged to try correct the interference by one or more of the following measures:

- Reorient the receiving antenna.
- Increase the separation between the equipment and receiver.
- Connect the equipment into an outlet on a circuit different from that to which the receiver is connected.
- Consult the dealer or an experienced radio/TV technician for help.

Any special accessories needed for compliance must be specified in the instruction manual.

You are cautioned that changes or modifications not expressly approved by the party responsible for compliance could void your authority to operate the equipment.