



BLUETOOTH PRINTER ADAPTER

QUICK SETUP GUIDE

A stylized logo consisting of a horizontal oval shape with a light blue gradient, flanked by two curved lines that sweep upwards and outwards. The text "BLUE TAKE" is centered within the oval in a light blue, sans-serif font.

B L U E T A K E

Contents	Page
CE Statement	1
Wireless Notice	2
Safety and General Information	2
English	3
Español	6
Русский	9
繁體中文	12
FCC Statement	15

Trademarks

"Bluetake" name and logo are trademarks of Bluetake Technology Co., Ltd. "Bluetooth" word mark and logos are owned by the Bluetooth SIG, Inc. and any use of such marks by Bluetake Technology Co., Ltd. is under license. "Microsoft", "Windows", "Windows Media" and "MSN" are registered trademarks of Microsoft Corporation. "BlueSoleil" is the registered trademark of IVT Inc. All other products, brand names or trademarks are those of their respective owners.

Copyrights

© Copyright 2006 Bluetake Technology Co., Ltd. All Rights Reserved.

CE Statement :

Hereby, Bluetake Technology Co., Ltd. declares that this device is in compliance with the essential requirement and other relevant provisions of the R&TTE Directive 1999/5/EC.

Wireless Notice

In some environments, the use of wireless devices may be restricted. Such restrictions may apply aboard airplanes, in hospitals, near explosives, in hazardous locations, etc. If you are uncertain of the policy that applies to the use of this device, please ask for authorization to use it prior to turning it on.

Safety and General Information

Please read the following information before using this product (BT220 Bluetooth Printer Adapter).

- Users are not permitted to make changes or modify the product and accessories in any way. Changes or modifications not expressly approved by the party responsible for compliance could void the user's authority to operate the equipment.
- DO NOT put the small parts into mouth to avoid swallowing. The product consists of small parts and does not suitable for children under the desired ages. Please KEEP AWAY all products, parts and accessories to children to avoid choking hazard.
- If you use any other personal medical device such as the artificial cardiac pacemaker or hearing aid, consult the manufacture of your device to determine if it is adequately shielded form RF energy.
- KEEP AWAY of fire, water, and high voltage equipments.
- Always use the original the AC Adapter included in the BT220 retail box to charge the BT220. Using any incorrect power supply device will cause damage to the BT220 equipments and void the warranty.

Retail Package Contents

- ① Bluetooth Printer Adapter (BT220)
- ② AC Adapter
- ③ Quick Setup Guide (in English, Spanish, Russian, Traditional Chinese)

Operation Interface

Function	LED
Searching mode	Blinking Blue light
Printing mode	Constant Blue light
Connect with AC Adapter	Constant Green light
Connect with Printer	Constant Orange light

- All specifications are subject to change without prior notice.
Please go to <http://www.bluetake.com/products/BT220.htm> to know the possible update.

Start to Use

Please make sure with the computer which support Bluetooth hardware (embedded chipset or USB adapter) and software support HCRP (Hardcopy Cable Replacement Profile) or SPP (Serial Port Profile)

The following instruction used BLUETAKE BT007 /009SX Bluetooth EDR USB Adapter to demonstrate the general procedure.

Step1: Enable the computer Bluetooth function or ready the Bluetooth USB adapter for pairing. Connect BT220 to parallel port of your printer. Power on your printer, and then apply power to BT220 adapter by using the AC adapter.

Step2: Double click Bluetooth icon in the task tray, enable IVT Corporation BlueSoleil main window.

Step3: Please click the middle red ball for search new Bluetooth device. Then, you will find out a printer icon named "BT220....". Select the device to pair with the computer.

Step4: Select "BT220 ", and then you can discover the Bluetooth service (function) provided by the BT220 printer adapter.

Step5: Double-clicking on the SPP icon which is named "Bluetooth Serial Port Service".

Bluesoleil driver will automatically choose the COM Port for the BT220 printer, please click " YES" and wait a moment until the "My Bluetooth COM Port 4 (COM 4) is connected to remote device" shows in your task bar, now the connection is established.

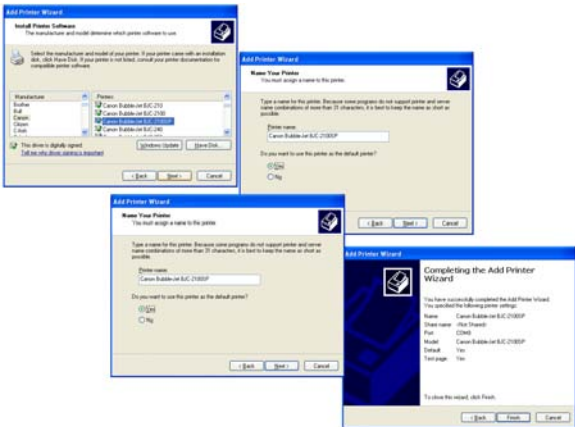


Step6: Select [add new printer], and then click on [Next] button.

Please select [Local printer attached to this new computer], and then click on [Next] button.

Step7: Select COM Port (refer Step5), and then click on [Next] button.

Please install the printer's driver, after setup the printer, print a test page make sure connection is successful.



Contenido del Paquete

- ① Adaptador de Impresora Bluetooth (BT220)
- ② Adaptador CA
- ③ Guía Rápida de Instalación (en Inglés, Español, Ruso, Chino Tradicional)

Operation Interface

Función	LED
Modo Búsqueda	Luz Azul Parpadeando
Modo Impresión	Luz Azul Constante
Conectar con Adaptador CA	Luz Verde Constante
Conectar con Impresora	Luz Naranja Constante

- Todas las especificaciones están sujetas a cambios sin previo aviso.
Por favor visite (<http://www.bluetake.com/products/BT220.htm>) para conocer las posibles actualizaciones.

Empiece a Usar

Por favor asegúrese de que el ordenador soporta hardware Bluetooth (chipset integrado o adaptador USB) y soporte software HCRP (Perfil de Cambio de Caple de Impresión) o SPP (Perfil de Puerto Serie)

Las siguientes instrucciones usaron el Adaptador USB BLUETAKE BT007 /009SX EDR para demostrar el procedimiento general.

Paso1: Habilite la función Bluetooth del ordenador o prepare el adaptador USB Bluetooth para emparejar. Conecte BT220 al puerto paralelo de su impresora. Encienda su ordenador, y después encienda el adaptador BT220 usando el adaptador CA.

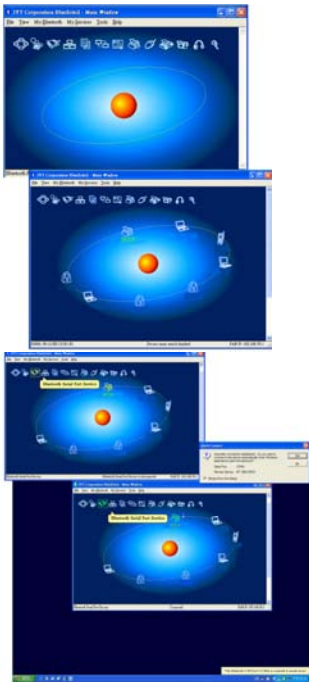
Paso2: Doble click en el icono Bluetooth en la bandeja de tareas, habilite la ventana principal IVT Corporation BlueSoleil.

Paso3: Por favor clicke la bola roja del medio para buscar nuevos dispositivos Bluetooth. Después, encontrará un icono de llamado "BT220...". Seleccione el dispositivo para emparejar con un ordenador.

Paso4: Seleccione "BT220", y después puede descubrir el servicio Bluetooth (función) ofrecido por el adaptador de impresora BT220.

Paso5: Haciendo doble-click en el icono SPP llamado "Servicio Puerto Serie Bluetooth".

El driver bluesoleil elegirá automáticamente el puerto COM para la impresora BT220, por favor clicke "SI" y espere un momento hasta que el "Mi Puerto COM 4 Bluetooth (COM 4)" esté conectado al dispositivo remoto" se muestre en la barra de tareas, ahora la conexión está establecida.

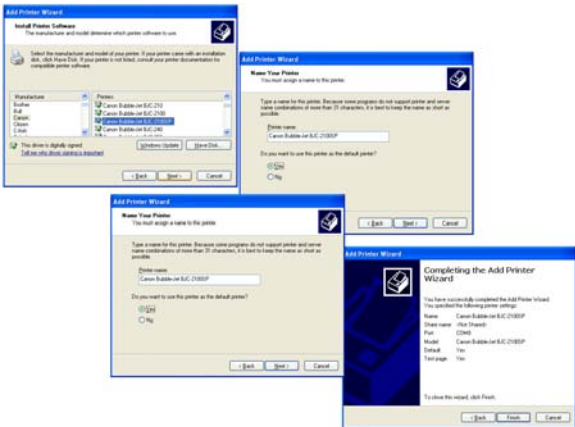


Paso6: Seleccione [añadir nueva impresora], y después clique en el botón [Siguiente].

Por favor selección [Impresora local conectada a este nuevo ordenador], y después clique en el botón [Siguiente].

Paso7: Seleccione el puerto COM (consulte el Paso5), y después clique en el botón [Siguiente].

Por favor instale el driver de la impresora, después de configurar la impresora, imprima una página de prueba para asegurarse de que la conexión es satisfactoria.



Комплектность упаковки

- ① Адаптер принтера Bluetooth (BT220)
- ② Адаптер переменного тока
- ③ Краткое руководство по установке (на английском, испанском, русском, китайском (традиционное письмо))

Интерфейс управления

Функция	Светодиод
Режим поиска	Синий светодиод мигает
Режим печати	Синий светодиод горит
Подключение через адаптер переменного тока	Зеленый светодиод горит
Подключение к принтеру	Оранжевый светодиод горит

- Все спецификации могут быть изменены без предварительного уведомления. Сведения о последних обновлениях можно получить на сайте <http://www.bluetake.com/products/BT220.htm>.

Начало работы

Используйте компьютер с поддержкой устройства Bluetooth (со встроенным интерфейсом или USB-адаптером) и соответствующего программного обеспечения HCRP (Hardcopy Cable Replacement Profile) либо SPP (Serial Port Profile)

Ниже описывается общая процедура на примере USB-адаптера BLUETAKE BT007 /009SX Bluetooth EDR.

Шаг 1. Включите функцию Bluetooth на компьютере или подготовьте USB-адаптер Bluetooth к синхронизации. Подключите адаптер BT220 к параллельному порту принтера. Включите принтер, затем подключите адаптер BT220 к сети питания через адаптер переменного тока.

Шаг 2. Дважды щелкните значок Bluetooth на панели задач и откройте главное окно IVT Corporation BlueSoleil.

Шаг 3. Щелкните красный шар посередине для поиска нового устройства Bluetooth.

Затем найдите значок принтера с именем «BT220...». Выберите устройство, синхронизируемое с компьютером.

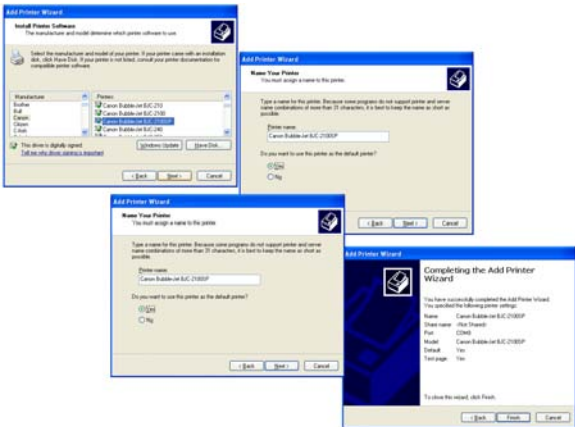
Шаг 4. Выберите «BT220», затем выполните поиск службы (функции) Bluetooth, поддерживаемой адаптером принтера BT220.

Шаг 5. Драйвер Bluesoleil автоматически выберет COM-порт для принтера BT220, щелкните «Да» и подождите, пока в панели задач не отобразится сообщение «К COM-порту Bluetooth 4 (COM 4) подключено удаленное устройство», после чего соединение будет установлено.



Шаг 6. Выберите [Установка принтера], затем нажмите кнопку [Далее]. Выберите [Локальный принтер, подключенный к этому принтеру], затем нажмите кнопку [Далее].

Шаг 7. Выберите COM-порт (см. шаг 5), затем нажмите кнопку [Далее]. Установите драйвер принтера и после установки принтера распечатайте тестовую страницу для проверки правильности подключения.



產品盒內容物

- ① 一個藍芽印表機連結器 (BT220)
- ② 一個室內電源器
- ③ 使用手冊 (英文版、西班牙文版、俄文版、繁體中文版)

操作介面

功能	燈號
搜尋模式	閃爍藍燈
列印模式	持續藍燈
與室內電源器連結中	持續綠燈
安裝在印表機上	持續橘燈

- 關於 BT220 藍芽印表機連結器,請您上網到 <http://www.bluetake.com/products/BT220.htm> 網站,以獲得更細詳、清楚的產品操作及應用功能。

使用步驟

在您使用BT220 之前請您確認電腦的藍芽硬體設備 (內建藍芽晶片或藍芽USB 連結器) 且支援 "藍芽序列埠 (Serial Port Profile) 服務" 或 "印表機 (Hardcopy Cable Replacement Profile) 服務" 的藍芽程式

下列指示步驟是使用藍越科技BT007 /009SX藍芽USB連結器在一起搭配的使用程序：

第一步

確認電腦的藍芽硬體設備(內建藍芽晶片或藍芽 USB 連結器)已經準備好進入配對模式。請將 BT220 安裝在印表機上, 並打開印表機的電源, 將電源器與 BT220 連結。

第二步: 請點選右下角工作列上的藍芽圖示，啟動 BlueSoleil 主視窗。

第三步: 請點主視窗中央的紅球，開始搜尋週邊的藍芽裝置。然後您會發現視窗中出現一個印表機圖示“BT220...”，請選擇那個圖示開始進行配對。

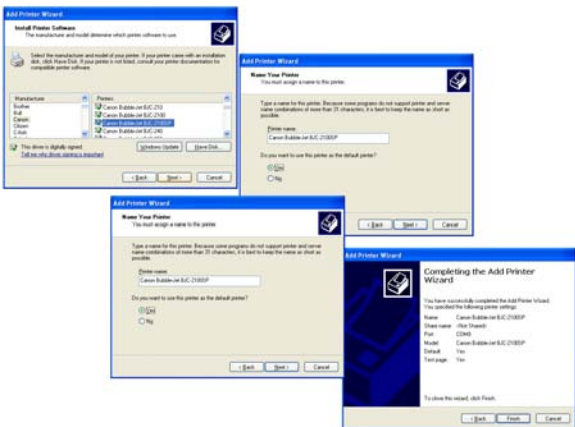
第四步: 當您點選“BT220...”圖示之後，您會發現上方對應的印表機服務小圖示開始顯示。

第五步: 您可以點選兩下“藍芽序列埠 (Serial Port Profile)服務”或是“印表機 (Hardcopy Cable Replacement Profile) 服務”圖示，讓印表機與電腦開始連線。一旦開始連線，電腦會自動幫您選擇兩個裝置相連的 COM port。當畫面上出現“My Bluetooth COM Port 4 (COM 4) is connected to remote device”訊息時，請按下確認鍵，然後連線就會建立完成，圖示也會轉變成綠色。



第六步：請到控制台下選擇[新增印表機]，然後選擇[連接到本台電腦的印表機] 然後按[下一步]。

第七步：選擇剛剛程式自動指定的 COM port (請參照第五步) 然後按[下一步]。
接著請選擇印表機的型號，然後安裝印表機的驅動程式，安裝完畢後請列印出測試頁確認整個程序安裝成功。



FCC Statement

This equipment has been tested and found to comply with the limits for a Class B digital device, pursuant to part 15 of the FCC rules. These limits are designed to provide reasonable protection against harmful interference in a residential installation. This equipment generates, uses and can radiate radio frequency energy and, if not installed and used in accordance with the instructions, may cause harmful interference to radio communications. However, there is no guarantee that interference will not occur in a particular installation. If this equipment does cause harmful interference to radio or television reception, which can be determined by turning the equipment off and on, the user is encouraged to try to correct the interference by one or more of the following measures:

-Reorient or relocate the receiving antenna.

-Increase the separation between the equipment and receiver.

-Connect the equipment into an outlet on a circuit different from that to which the receiver is connected.-Consult the dealer or an experienced radio/TV technician for help.

This device complies with Part 15 of the FCC Rules. Operation is subject to the following two conditions: (1) This device may not cause harmful interference, and (2) this device must accept any interference received, including interference that may cause undesired operation.

This transmitter must not be co-located or operating in conjunction with any other antenna or transmitter. Any Changes or modifications not expressly approved by the party responsible for compliance could void the user's authority to operate this equipment.

IMPORTANT NOTE:

FCC Radiation Exposure Statement: This equipment complies with FCC radiation exposure limits set forth for an uncontrolled environment. This equipment should be installed and operated with minimum distance 20cm between the radiator & your body.

Bluetake Technology Co., Ltd.
www.bluetake.com

V061106A