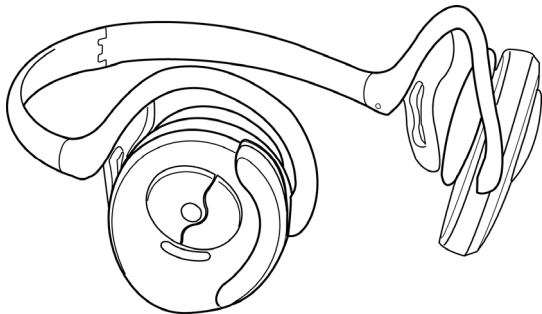


i-PHONO PLUS

BLUETOOTH STEREO HEADPHONE



USER MANUAL

FOR BT420Rx SERIES

B L U E T A K E

Index

Safety and General Information.....	
What's in the Box.....	
Hardware introduction.....	
Headphone Operation Interface.....	
Compatibility.....	
Turning On/Off i-PHONO PLUS.....	
Charging i-PHONO PLUS.....	
Pairing i-PHONO PLUS.....	
Wearing i-PHONO PLUS Headphone.....	
Using with the General Music Player.....	
Using with the Bluetooth-enabled Computer.....	
Pairing.....	
Listen to Music and Player Remote Control.....	
Internet Messenger Application.....	
Using with the Bluetooth-enabled PDA.....	
Using with the Bluetooth-enabled Mobile Phone.....	
Pairing.....	
Answer / Make / End a call.....	

Troubleshooting.....	
Specification.....	
Battery and Charging Notice.....	
Wireless Notice.....	
DGT Statement.....	

Trademarks

"Bluetake" name and logo are trademarks of Bluetake Technology Co., Ltd. "Bluetooth" word mark and logos are owned by the Bluetooth SIG, Inc. and any use of such marks by Bluetake Technology Co., Ltd. is under license. "Microsoft", "Windows", "Windows Media" and "MSN" are registered trademarks of Microsoft Corporation. "BlueSoleil" is the registered trademark of IVT Inc. "WIDCOMM" is the registered trademark of Broadcom Corporation. "Toshiba" is the registered trademark of Toshiba Corporation. "Yahoo!" name and logo are trademarks of Yahoo! Inc. "Skype" name and logo are trademarks of Skype Technologies S.A. All other products, brand names or trademarks are those of their respective owners.

Copyrights

© Copyright 2005 Bluetake Technology Co., Ltd. All Rights Reserved.

Safety and General Information

Please read the following information before using this product (i-PHONO PLUS Bluetooth Stereo Headphone).

- Users are not permitted to make changes or modify the product and accessories in any way. Changes or modifications not expressly approved by the party responsible for compliance could void the user's authority to operate the equipment.
- DO NOT put the small parts into mouth to avoid swallowing. The product consists of small parts and does not suitable for children under the desired ages. Please KEEP AWAY all products, parts and accessories to children to avoid choking hazard.
- DO NOT use the product while operating a motor vehicle.
- To avoid electronic interference and/or compatible conflicts, TURN OFF the product in any facilities where posted notices instruct you to do so. For example: Aircraft, Military Base, Hospital or Health Care Facilities.
- To avoid impairing your hearing in the long-term operation, keep the headphone volume in the moderate level.
- If you use any other personal medical device such as the artificial cardiac pacemaker or hearing aid, consult the manufacture of your device to determine if it is adequately shielded form RF energy.
- KEEP AWAY of fire, water, and high voltage equipments.
- Observe the charging procedure described in this manual to charge the product.

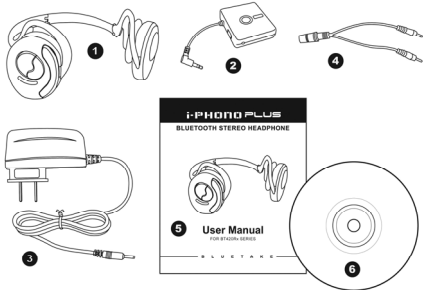
What's in the Box

Please check the **P/N** (product number) of the i-PHONO PLUS retail box you got. Then, please refer to the **P/N** to check the contents are subject to the retail box.

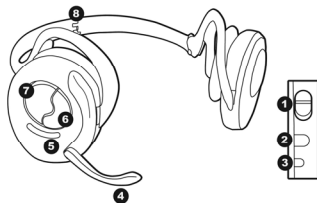
P/N:BT420Rx-C

Bluetooth Stereo Headphone Kit - Combo Pack:

- 1 Bluetooth Stereo Headphone (BT420Rx)
- 2 Bluetooth Stereo Dongle (BT430Tx)
- 3 Y-splitter Power Cable
- 4 AC Power Adapter
- 5 User Manual (English)
- 6 Utility CD (e-Manual in English, French, German, Italian, Spanish, Russian, Traditional Chinese, Japanese)

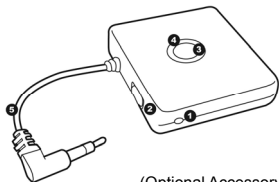


Hardware Introduction



Stereo Headphone (BT420Rx)

1. Power Switch
2. Charge Socket
3. Charging Indicator
4. Retractable Microphone
5. Status Indicator
6. +/- Volume Button
7. Multi-functional Button
8. Neck-back Band



(Optional Accessory)

Stereo Dongle (BT430Tx)

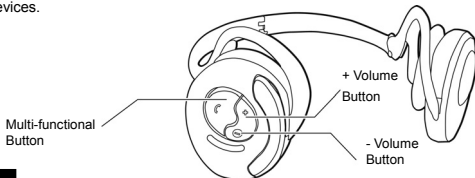
1. Charge Socket
2. Power Switch
3. Pairing Button
4. Status Indicator
5. 3.5mm (1/8 in.) Stereo Plug

Headphone Operation Interface

Function		Multi-functional Button	+/- Volume Button	Status Indicator
General	Pairing Mode	Press and Hold for 2 sec.	N/A	Red/Blue alternately
	Volume +	N/A	Press "+" once per level	-
	Volume –	N/A	Press "-" once per level	-
MUSIC	Play	Press once	N/A	-
	Pause	Press once	N/A	-
	Next	N/A	Press "+" and Hold for 2 sec.	-
	Previous	N/A	Press "-" and Hold for 2 sec.	-
CALL	Call Answer	Press once	N/A	Blue
	Call End	Press once	N/A	-

Low Battery: Status Indicator flashes Red.

Notice: The actual functions and operations may vary due to the different applied Bluetooth devices.



Compatibility

A2DP: Advanced Audio Distribution Profile **AVRCP**: Audio Video Remote Control Profile
HSP: Headset Profile **HFP**: Hands-free Profile

Appliance	The PC which is installed the A2DP/AVRCP ready Bluetooth hardware, such as the BLUETAKE BT007Ex / BT007Si / BT009Si Bluetooth USB Adapter.
Software	Recommended Bluetooth Software: <ul style="list-style-type: none"> ● IVT BlueSoleil Bluetooth Software v1.6.1.4 or later. ● Toshiba Bluetooth Stack v3.0.3 or later. ● Widcomm BTW Bluetooth Software v4.0.12101 or later. Media Application: Windows Media Player 9 or later.
Function	<ul style="list-style-type: none"> ■ Stereo (A2DP) and Player Remote Control (AVRCP) functions included Play / Pause / Next / Previous. ■ Headset (HSP) functions included mono sound Play / Record that can be used with the compatible PC. The Headset functions also can be applied to the Internet messenger applications such as Skype, MSN Messenger, Yahoo! Messenger, etc.

Appliance	The PDA which supports Bluetooth A2DP/AVRCP/HSP
Function	<ul style="list-style-type: none"> ■ Stereo (A2DP) and Player Remote Control (AVRCP) functions included Play / Pause / Next / Previous or Rewind that can be applied to the built-in Windows Media Player 9 or later versions. ■ Headset (HSP) functions included mono sound Play / Record that can be used with the compatible PDA.

Appliance	The mobile phone which supports Bluetooth HSP/HFP.
Function	■ Hands-free Communication (HSP/HFP) functions included Answer / Make / End that can be applied to phone calls.

Appliance	BLUETAKE i-PHONO PLUS Bluetooth Stereo Dongle (P/N: BT430Tx)
Function	■ Stereo (A2DP) functions can be used with the music player which is built - in a 3.5mm (1/8 in.) stereo out jack. The music player can be a CD Player, MP3 Player, Mini Hi-Fi system, Handheld Game Condole, Portable Media Player, etc.

Notice:

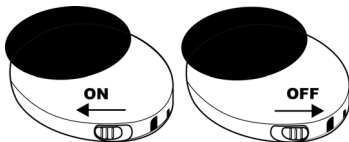
- The actual functions and operations may vary due to the different applied Bluetooth devices.
- The compatibility is subject to change without prior notice.
Please go to <http://www.bluetake.com/products/BT420Rx.htm> to know more update information.

Turn On/Off i-PHONO PLUS

< If this is the first time you use the i-PHONO PLUS headphone and Stereo Dongle, please refer to the next lesson to **FULLY** charge both the devices in advance. >

[Headphone]

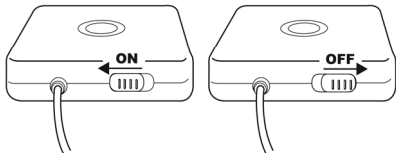
Turn On / Off: Sliding the power switch to turn on / off the i-PHONO PLUS headphone.



[Stereo Dongle]

(Optional Accessory)

Turn On / Off: Sliding the power switch to turn on / off the i-PHONO PLUS stereo dongle.



Charging i-PHONO PLUS

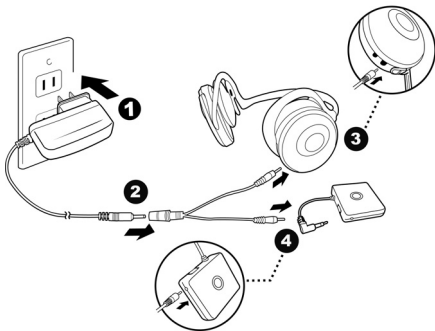
Before you start to charge the i-PHONO PLUS headphone and stereo dongle, please turn off both the devices in advance.

Step-1: Mount the AC Power Adapter to the interior wall outlet.

Step-2: Connect the AC Power Adapter with the Y-splitter Power Cable.

Step-3: Plug the pipe-shaped terminal of the Y-splitter Power Cable into the charge socket of the headphone.

Step-4: Plug the pipe-shaped terminal of the Y-splitter Power Cable into the charge socket of the Stereo Dongle.



Please refer to the following chart to know the charging status:

Charging Indicator of Headphone	
Red Constant	Charging Mode
Green Constant	Fully Charged
Status Indicator of Stereo Dongle	
Red Constant	Charging Mode
Light Switched Off	Fully Charged
Low Battery Power Indication	
Headphone	When the headphone is on and the battery power becomes low, the Status Indicator of the headphone flashes Red. Please recharge it as described above.
Stereo Dongle	When the stereo dongle is on and the battery power becomes low, the Status Indicator of the stereo dongle flashes Red. Please recharge it as described above.

Notice:

- Please read carefully the "Battery and Charging Notice" in this manual to know the safety information for battery charging.

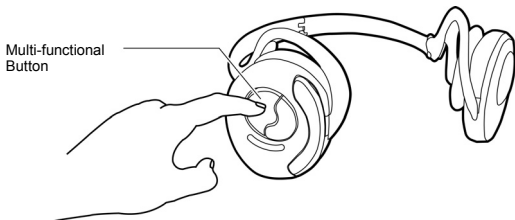
Pairing i-PHONO PLUS Headphone

Before you start to use the i-PHONO PLUS headphone with the compatible Bluetooth device such as a stereo dongle, computer, mobile phone, PDA, etc., please pair the headphone with the compatible Bluetooth device in advance.

Step-1: If the headphone is already on, please disconnect all Bluetooth services between the headphone and other devices. Then, turn off the headphone.

Step-2: Turn on the headphone. Then, press and hold the Multi-functional Button of headphone for 2 seconds, and the Status Indicator of headphone will flash Blue and Red alternately; meanwhile, the headphone is in the pairing mode.

After the pairing is completed, the Status Indicator of headphone will flash Blue regularly.



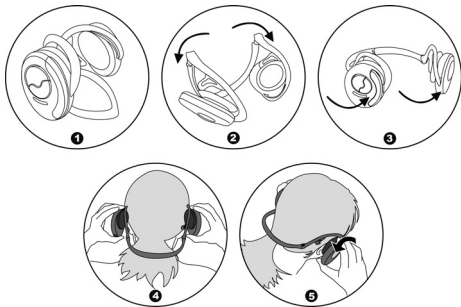
Wearing i-PHONO PLUS Headphone

Please consult the following instruction to wear the headphone.

Step-1: Please consult the following instruction expand the i-PHONO PLUS headphone.

Step-2: After the headphone fully expanded; please consult the following **④-⑤**, hold the headphone's main part to wear smoothly.

Step-3: Adjust the suitable position to fit both sides of your ears.



Using with General Music Player

You can enjoy the stereo music transmitted wirelessly from the music player which is installed the i-PHONO PLUS Bluetooth Stereo Dongle (P/N: BT430Tx), the music player can be a CD Player, MP3 Player, Mini Hi-Fi system, Handheld Game Condole, Portable Media Player, Non-Bluetooth supported computer, etc.

< Via i-PHONO PLUS Stereo Dongle >

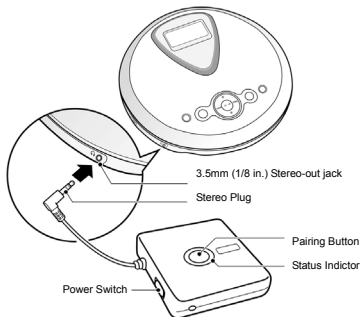
Step-1: Put the i-PHONO PLUS headphone in the pairing mode in advance. (page14)

Step-2: Afterward, put the i-PHONO PLUS stereo dongle in the pairing mode. Turn on the stereo dongle, then press and hold the Pairing Button until its Status Indicator flashes Blue and Red alternately. Once the stereo dongle is putting in the pairing mode, it will begin to search and pair with the headphone automatically. After the pairing is completed, both the devices' Status Indicators will flash Blue regularly.

Step-3: Install the stereo dongle to the music player. The installation is effortless and no driver or software is necessary. You only need to connect the Stereo Plug of the i-PHONO PLUS stereo dongle to the 3.5mm (1/8 in.) stereo-out jack of the music player.

Step-4: Play Music.

Notice: After you connected the headphone with the stereo dongle at the first time, please adjust the headphone volume up due to the initial volume of the headphone volume is minimum.



Using with the Bluetooth-enabled Computer

You can use the i-PHONO PLUS headphone's stereo (A2DP) and remote control (AVRCP) functions with the Bluetooth-enabled computer which answers the following requirements:

- Windows XP O.S.
- Both Bluetooth hardware (embedded chipset or USB adapter) and software support A2DP (Advanced Audio Distribution Profile) and AVRCP (Audio Video Remote Control Profile)

The following instruction used BLUETAKE BT007Si Bluetooth USB Adapter and IVT BlueSoleil Bluetooth Software v1.6.1.4 to demonstrate the general procedure.

<Pairing>

Step-1: Follow "Pairing" procedure to put the i-PHONO PLUS headphone in the pairing mode. (page14)

Step-2: Open the Bluetooth software and search the i-PHONO PLUS headphone. Then, you will find out a headphone (headset) icon named "iPHONO PLUS". Select the device to pair with the computer.

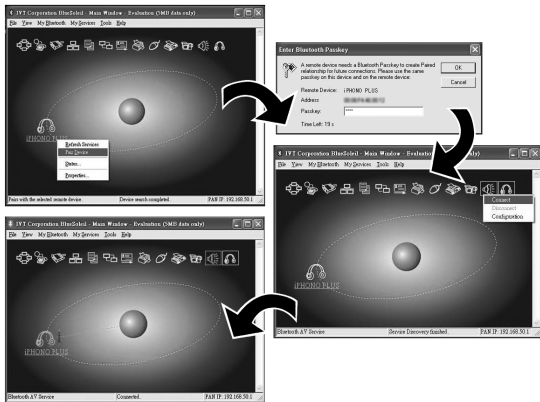
Step-3: Afterward a dialogue box will prompt you for a passkey or PIN. Enter **0000** (a sequence of four zeros) in the dialog box and then click on "OK" or "Confirm". After the pairing is completed, the headphone (headset) icon will be marked.

Step-4: Double click on the marked headphone (headset) icon, and then you can discover the Bluetooth service (function) provided by the i-PHONO PLUS headphone.

Step-5: Connect the computer with the headphone by double-clicking on the A2DP icon which is usually named “Bluetooth AV Service”, “A2DPSink” or “Audio Sink”.

After the connection is established, the headphone (headset) icon's color or figure will be changed in the Bluetooth software window and the Status Indicator of headphone will flash Blue regularly.

Now, the i-PHONO PLUS headphone is ready to apply the stereo wireless transmission with the paired computer. Thereafter, you only need to follow up the instruction from **Step-4** if you you want to operate the same application.



< Listen to Music and Player Remote Control >

After you connected the i-PHONO PLUS headphone with the paired computer via the Bluetooth AV service (A2DP), you can enjoy the stereo music transmitted from the computer wirelessly.

Step-1: Make sure the i-PHONO PLUS headphone is connected with the computer via Bluetooth AV service (A2DP).

Step-2: Open the media application program such as Windows Media Player, and then select media files to play.

If there is no sound emitted from the headphone while the music is playing, please close the media application program and open “Control Panel” of the Windows system, and then double-click on “Sounds and Audio Devices” icon. Please make sure that “Bluetooth AV/HS Audio”, “Bluetooth High Quality Audio” or “Bluetooth Wave from TOSHIBA” is selected for “Sound Playback” under the “Audio” tab in “Sounds and Audio Devices Properties” window. Afterward, please open the media application program to play the media files again.



Step-3: If the used media application program is Windows Media Player; you can remote control the music playing from the connected i-PHONO PLUS headphone.

Player Function	+/- Volume Button
Volume Up / Down	Press “+ / -” once per level
Next	Press “+” and Hold for 2 sec.
Previous	Press “-” and Hold for 2 sec.

Player Function	Multi-functional Button
Play / Pause	Press Once

Notice:

- The Bluetooth software and stacks you used must support Bluetooth A2DP and AVRCP.
- The remote control functions can be applied to Windows Media Player 9 or later versions and might be unavailable for other media application programs.
- The music streaming may be interrupted or interfered if another Bluetooth device is connected with the computer at the same time. Only connect the headphone with the computer can keep the music streaming quality.
- If the headphone is distant from the computer, or if there are some metal obstructions in-between, the music streaming may be interrupted or interfered.
- After you connected the headphone with the computer at the first time, please adjust the headphone volume up due to the initial volume of the headphone volume is minimum.

< Internet Messenger/Chatting Application >

You can use the i-PHONO PLUS headphone's mono headset (HSP) functions with the Bluetooth-enabled computer which answers the following requirements:

- Windows XP/2000 O.S.
- Internet Messenger/Chatting Application such as Skype, MSN Messenger, Yahoo! Messenger, etc.
- Both Bluetooth hardware (embedded chipset or USB adapter) and software support HSP (Headset Profile).

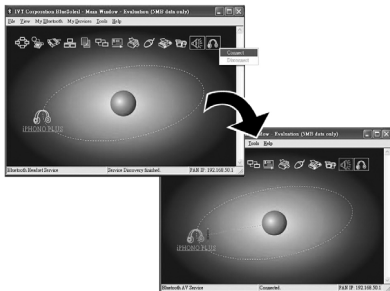
The following instruction used BLUETAKE BT007Si Bluetooth USB Adapter and IVT BlueSoleil Bluetooth Software v1.6.1.4 to demonstrate the general procedure.

For Pairing the headphone with the computer, please refer to <Pairing> Step-1 to Step-3. (page17)

Step-4: Double click on the marked headphone (headset) icon, and then you can discover the Bluetooth service (function) provided by the i-PHONO PLUS headphone.

Step-5: Connect the computer to the headphone by double-clicking on the headset icon which is usually named "Bluetooth Headset Service" or "Headset". If the service has been properly detected, the i-PHONO PLUS headphone is being called, and the default ring tone will be emitted from the headphone. Please press the headphone's Multi-functional Button to answer while you're hearing the ring tone.

After the connection is established, the headphone (headset) icon's color or figure will be changed in the Bluetooth software window and the Status Indicator of headphone will flash Blue regularly.

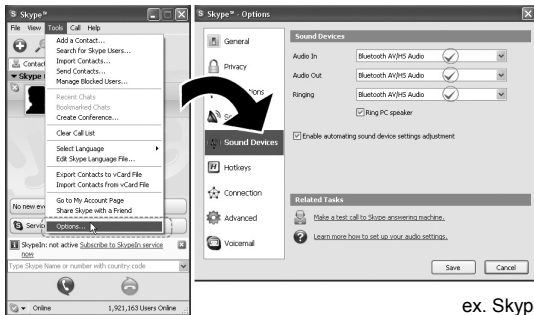


Step-6: Open the Internet messenger program such as Skype, MSN Messenger, Yahoo! Messenger, etc.

If there is no sound emitted from the i-PHONO PLUS headphone while the conversation is beginning, please close the Internet messenger program and open "Control Panel" of the Windows system, and then double-click on "Sounds and Audio Devices" icon. Please make sure that "Bluetooth AV/HS Audio", "Bluetooth Audio" or "Bluetooth Wave from TOSHIBA" is selected for "Sound Playback" and "Sound Recording" under the "Audio" tab in "Sounds and Audio Devices Properties" window. Afterward, please open the Internet messenger program again.



Step-7: Make sure that “Bluetooth AV/HS Audio”, “Bluetooth Audio” or “Bluetooth Wave from TOSHIBA” is selected for speaker and microphone settings of the Internet messenger program you used. Afterward the i-PHONO PLUS headphone is ready to be used with the Internet messenger program.



ex. Skype™

Notice:

- The Bluetooth software and stacks you used must support Bluetooth HSP.
- The mono headset (HSP) functions cannot be used with the stereo functions (A2DP) simultaneously. It means that if you have connected the headphone with the computer for stereo applications, it's impossible to use it for the Internet messenger program at the same time.
- If the headphone is distant from the computer, or if there are some metal obstructions in-between, or if the Internet bandwidth is narrow, the conversation quality may be poor.
- After you connected the headphone with the computer at the first time, please adjust the headphone volume up due to the initial volume of the headphone volume is minimum.

Using with the Bluetooth-enabled PDA

You can use the i-PHONO PLUS headphone's stereo (A2DP) and remote control (AVRCP) functions with the Bluetooth-enabled PDA which answers the following requirements:

- Microsoft® Windows Mobile™ 2003 Second Edition or later
- Windows Media Player 9 or later
- Both Bluetooth hardware (embedded chipset) and software (stack) support A2DP (Advanced Audio Distribution Profile) and AVRCP (Audio Video Remote Control Profile)

Please turn on the Bluetooth radio of your PDA and put the i-PHONO PLUS headphone in the pairing mode beforehand. (page14)

Step-1: Open "Bluetooth Manager" and tap "High Quality Audio setup".

Step-2: An icon named "iPHONO PLUS" will appear. Tap this icon.

Step-3: When the PDA discovers the i-PHONO PLUS headphone for the first time, you may be prompted for a passkey. Enter **0000** (a sequence of four zeros) and tap "OK"



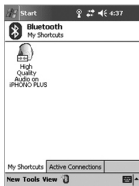
1



2



3



Step-4: Check “Create a shortcut for this connection” and tap “Finish”.

Step-5: Once the headphone has made an initial pairing with the PDA, the High Quality Audio shortcut icon for i-PHONO PLUS will appear on the screen of PDA. If the High Quality Audio connection is established via Bluetooth A2DP, the shortcut icon will be marked with a Green symbol.

Thereafter, you only need to double tap the shortcut icon to reestablish the High Quality Audio connection.

Step-6: After the High Quality Audio connection is established, you can use the i-PHONO PLUS headphone to listen to the stereo music played from the connected PDA. Open “Windows Media Player” and select music files to play.

Besides, you can remote control the music playing from the connected i-PHONO PLUS headphone.

Player Function	+/- Volume Button
Volume Up / Down	Press “ + / – ” once per level
Next	Press “ + ” and Hold 2 sec.
Rewind or Previous	Press “ – ” and Hold 2 sec.

Player Function	Multi-functional Button
Play / Pause	Press Once

Notice:

- The Bluetooth software and stacks you used must support Bluetooth A2DP and AVRCP.
- The remote control functions can be applied to Windows Media Player 9 or later versions and might be unavailable for other media application programs.
- The actual “Rewind” and “Previous” functions may vary due to the different Windows Media Player versions and the diverse Bluetooth devices.
- The music streaming may be interrupted or interfered if another Bluetooth device is connected with the PDA at the same time. Only connect the headphone with the PDA can keep the music streaming quality.
- If the headphone is distant from the PDA, or if there are some metal obstructions in-between, the music streaming may be interrupted or interfered.
- After you connected the headphone with the PDA at the first time, please adjust the headphone volume up due to the initial volume of the headphone volume is minimum.

Using with the Bluetooth-enabled Mobile Phone

Besides the stereo wireless transmission, the i-PHONO PLUS headphone can be used for mobile hands-free communication with mobile phones which support either the Headset or Hands-free profile of Bluetooth wireless technology.

You can answer or make a phone call via the i-PHONO PLUS headphone with the Bluetooth-enabled mobile phone while you are listening to music. Once you end the call, the stereo streaming will come back automatically to the headphone.

<Pairing>

Step-1: Follow “Pairing” procedure to put the i-PHONO PLUS headphone in the pairing mode (page14). If the headphone is already on, please disconnect all Bluetooth services between the headphone and other devices in advance.

Step-2: Follow the operating instruction for your Bluetooth mobile phone to start the pairing process. Typically, this is done by going to a “Connect” or “Setup” menu and then selecting the options to search the headphone that is still in the pairing mode.

Step-3: The mobile phone’s display should indicate to you that it found the headphone named “iPHONO PLUS” and ask if you want to pair it. Please press the corresponding button such as “Ok”, “Yes” or “Accept” to confirm this action.

Step-4: The mobile phone’s display should then prompt you for a passkey or PIN. Enter **0000** (a sequence of four zeros) and the display should prompt the pairing result. If the pairing is unsuccessful, please turn off the headphone and turn it on again. Then, return to Step-1 and do the pairing procedure again.

< Answer a Call >

Step-1: If there is an incoming call while you are listening to the streaming music, both the mobile phone and the headphone will ring simultaneously.

Step-2: Please press the Multi-functional button of headphone once to answer the call.

< Make a Call >

Step-1: Use the mobile phone's keypad to dial the phone number.

Step-2: Press mobile phone's "Send" or "OK" key. The mobile phone initiates the call and transfer the call from the mobile phone to the headphone.

< End a Call >

Use either of the following methods to end a call.

- To end a call from the headphone – When you want end a phone call, just press the Multi-functional button of headphone once to end the call.
- End a call from the mobile phone's keypad.

In the meantime you are answering or making a call, the headphone will switch the connection from the music player (A2DP) to the mobile phone (HSP or HFP); moreover, the streaming music will be paused temporarily. After you ended the call, the music will be played and streamed to the headphone continuously.

Notice:

- The paired Bluetooth mobile phone has to support Bluetooth HSP or HFP.
- The actual hands-free functions and operations may vary due to the different paired mobile phone models and Bluetooth settings.
- Some mobile phone models may not release the Bluetooth connection automatically will cause the headphone to fail to switch the connection from HSP / HFP to A2DP.
- If the headphone is distant from the mobile phone, or if there are some metal obstructions in-between, the hands-free communication may be interrupted or interfered.
- After you connected the headphone with the Bluetooth mobile phone at the first time, please adjust the headphone volume up due to the initial volume of the headphone volume is minimum.

Troubleshooting

Q: What can I do if the i-PHONO PLUS headphone is unable to pair with the stereo dongle?

A: Please try the following procedure:

1. If the headphone is already on, please disconnect all possible Bluetooth services between the headphone and other devices in advance.
2. Make sure both of the headphone and stereo dongle are still work with the sufficient battery power, and then turn off both.
3. Turn off the nearby Bluetooth devices except the headphone and stereo dongle, or pair the headphone with the stereo dongle in the other area.
4. Put the headphone in the pairing mode in advance, and then put the stereo dongle in the pairing mode. Due to other Bluetooth devices may interfere with the pairing operation, the stereo dongle may leaves the pairing mode beforehand. Please turn off the nearby Bluetooth devices except the headphone and stereo dongle, or pair the headphone with the stereo dongle in the other area.

Q: Why the headphone's sound quality is poor as mono?

A: When you met the issue, you might connect the headphone with your Bluetooth master device such as a mobile phone, computer or PDA via the HSP (Headset Profile). The stereo music is only available to be transmitted via the A2DP (Advanced Audio Distribution Profile). Please make sure your Bluetooth master device supports A2DP, and then connect the headphone with it via the A2DP.

Q: How to improve the stereo streaming effectiveness?

A: Please try the following instructions under the typical conditions:

1. Bluetooth Bandwidth Limitation - The i-PHONO PLUS headphone uses Bluetooth wireless technology to communicate that requires full bandwidth to stream stereo wirelessly. The stereo wireless streaming may be interrupted or interfered if another Bluetooth device is connected simultaneously with the A2DP-Source device such as a computer or PDA. Only connect the headphone with the computer can keep the stereo streaming quality.
2. RF Interference - The radio noise may be caused by the nearby device such as a Wi-Fi device, microwave oven or cellular phone station, and the radio noise may interfere with the stereo wireless transmission. Please place the A2DP-Source device to be closer to the headphone.
3. Environment Obstruction - If the headphone is distant from the A2DP-Source device, or if there are some metal obstructions in-between, the stereo wireless transmission may be interdicted. Please move the A2DP-Source device from the possible metal framework, shelf or container, and place it in the wider area.

Q: Why the Bluetooth connection is unable to be switched back to the music player (A2DP) after I ended a phone call?

A: The connection switching duration will be longer for some phone model, please wait the whole process is completed. Moreover, some mobile phone models may not release the Bluetooth connection automatically will cause the headphone to fail to switch the connection from the HSP / HFP (mobile phone) to the A2DP (music player). Please turn off the Bluetooth radio of your mobile phone in advance if you meet the issue, and then restart the headphone.

Specification*¹ (Headphone)

UNIT

Dimensions:

Folded: 100 x 88 x 77 mm (3.94 x 3.46 x 3.03 in.) (Neck-back Band Included)

Extended: 150 x 140 x 75 mm (5.91 x 5.51 x 2.95 in.) (Neck-back Band Included)

Weight: 98 g (3.46 oz.) (Battery Included)

Built-in Speaker: Ø 30 mm (1.18 in.) (Diameter)

SOUND

Frequency Response: 20 Hz – 20 KHz

Sample Rate: 48 KHz, 16 Bit

SPL (Sound Pressure Level): 100 dB @ 1 KHz

THD (Total Harmonic Distortion): 0.1 %

SNR (Signal to Noise Ratio): 80 dB

BLUETOOTH

Specification: Bluetooth v1.2 compliant

Bluetooth Profile Supported: A2DP / AVRCP / HSP / HFP

Fixed PIN Code: 0000 (a sequence of four zeros)

Connection Switching: Between 1 Player and 1 Phone*²

Audio Codec: SBC

RADIO

Carrier Frequency: 2.4 - 2.484 GHz

Spread Spectrum: FHSS (Frequency Hopping Spread Spectrum)

Modulation Method: GFSK (Gaussian Frequency Shift Keying)

Radio Coverage: Class 2, up to 5–10 m (15–30 ft.) *³ in open field

Antenna: Chip Antenna

Sensitivity: ≤0.1% BER @ -80 dBm

RF Output Power: -6 dBm to 4 dBm

Power**Power Consumption: 240 mW****Power Input: 5 V / 250 mA****Built-in Battery: 3.7 V / 550 mAh / Li-Polymer / Rechargeable****OPERATION****Operating Time: approx. 7 hours*4****Operating Temperature: -10°C ~ +60°C (+14°F ~ +140°F)****Storage Temperature: -20°C ~ +70°C (-4°F ~ +158°F)****Notice**

*1 All specifications are subject to change without prior notice.

Please go to <http://www.bluetake.com/products/BT420Rx.htm> to know the possible update.

*2 The playback must be installed the BLUETAKE BT430Tx Bluetooth Stereo Dongle or the A2DP/AVRCP compatible Bluetooth USB Adapter. The actual functions and operations may vary due to the different applied Bluetooth devices.

*3 The actual range depends on the paired Bluetooth device, battery power, and environmental factors: orientation of devices relative to each other, obstructions, enclosures, radio frequency noise, and interference.

*4 The actual operating time depends on the usage frequency and environmental factors. The long distance wireless connection and use with a mobile phone will increase the power consumption.

Battery and Charging Notice

BATTERY WARNING :

Both the i-PHONO PLUS headphone and dongle contain rechargeable Lithium batteries. To reduce the risk of fire or burns, do not disassemble, crush, puncture, short external contacts, or dispose of in fire or water.

CHARGING NOTICE :

To reduce the risk of personal injury, electrical shock, fire or damage to the equipments, please follow all instruction below :

- Do not expose the i-PHONO PLUS equipments (headphone and dongle) and AC Power Adapter to rain or water.
- Do not install, place or use the i-PHONO PLUS equipments near any source of heat such as a stove, radiator, oven, toaster, coffee maker or other apparatus (including microwave oven) that gives off heat.
- Always use the original the AC Power Adapter and Y-splitter Power Cable included in the i-PHONO PLUS retail box (P/N:BT420Rx-C) to charge the i-PHONO PLUS equipments (headphone and dongle). Using any incorrect power supply device will cause damage to the i-PHONO PLUS equipments and void the warranty.
- Do not pull on a power cord or cable. When unplugging from the electrical outlet, grasp the power cord by the plug or, in the case of the AC Power Adapter, grasp whole AC Power Adapter whole unit and pull out it from the electrical outlet.

Wireless Notice

In some environments, the use of wireless devices may be restricted. Such restrictions may apply aboard airplanes, in hospitals, near explosives, in hazardous locations, etc. If you are uncertain of the policy that applies to the use of this device, please ask for authorization to use it prior to turning it on.

DGT Statement

根據交通部低功率釐理辦法之規定：

第十四條

經型式認證合格之低功率射頻電機，非經許可，公司、商號或使用者均不得擅自變更頻率、加大功率或變更原設計之特性及功能。

第十七條

低功率射頻電機之使用不得影響飛航安全及干擾合法通信，經發現有干擾現象時，應立即停用，並改善至無干擾時方得繼續使用。

第二十條

輸入、製造低功率射頻電機之公司、商號或使用者違反本辦法規定，擅自使用或變更無線電頻率、電功率者，除依電信法規定處罰外，電信總局並得撤銷其型式認證證明或型式認證標籤。

Notice

Any changes or modifications (including the antennas) made to this device that are not expressly approved by the manufacturer may void the user's authority to operate the equipment.

FCC Statement

This device complies with Part 15 of the FCC Rules. Operation is subject to the following two conditions:

- 1) this device may not cause harmful interference and,
- 2) this device must accept any interference received, including interference that may cause undesired operation

Changes or modifications not expressly approved by the party responsible for compliance could void the user's authority to operate the equipment.

FCC RF Radiation Exposure Statement

This equipment complies with FCC radiation exposure limits set forth for an uncontrolled environment. End users must follow the specific operating instructions for satisfying RF exposure compliance. This dongle must not be co-located or operating in conjunction with any other antenna or dongle.

CE and European Union Regulatory Notice

This product complies with the following EU Directives:

- CE R&TTE RF Test: EN 300 328-1
- CE R&TTE EMC Test: EN 301 489-1 & 17
- CE R&TTE LVD Test: EN 60950