

i-PHONO mini

Bluetooth® Stereo Headphone

P/N: BT450Rx



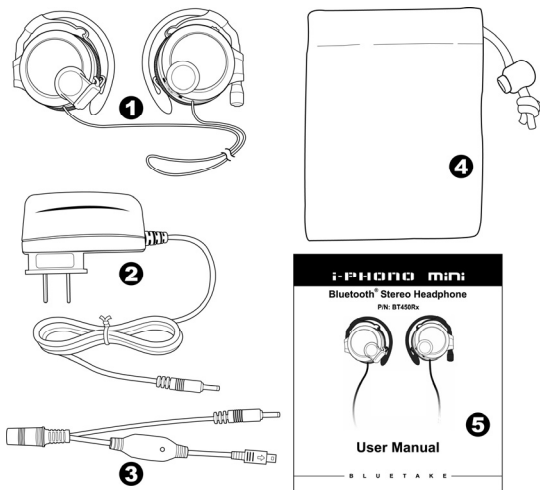
User Manual

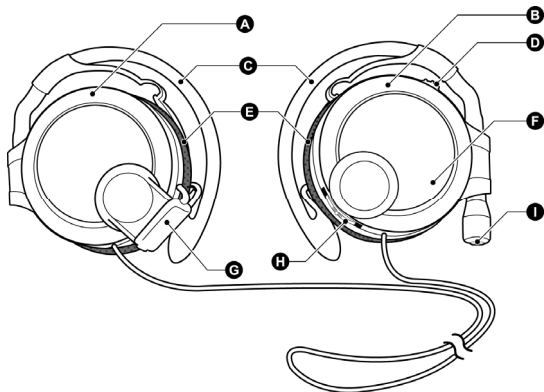
B L U E T A K E

Retail Box Contains

Please make sure you have received the following items:

- 1 Bluetooth Stereo Headphone (BT450Rx)
- 2 AC Power Adapter (Output: DC 5V / 500 mA)
- 3 Y-splitter Power Cable
- 4 Nonwoven Fabrics Pouch
- 5 User Manual



**Bluetooth Stereo Headphone:**

- | | |
|-----------------------|---------------------------|
| (A) Left Side Speaker | (B) Right Side Speaker |
| (C) Ear Clip | (D) Power/Call Button |
| (E) Foam Ear Pad | (F) Status LED Indicator |
| (G) Charge Socket | (H) Remote Control Roller |
| (I) Microphone | |

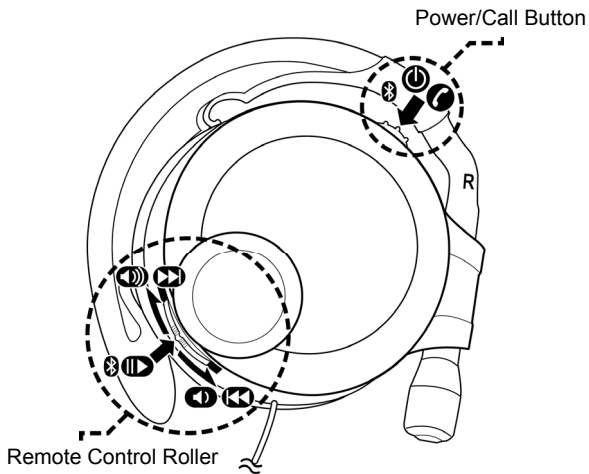
Status LED Indicator Chart

Bluetooth Stereo Headphone		
Status	LED Pattern	Beep
Power on	Blue	1 beep
Connected	Blue	1 beep
Pairing Mode	Red + Blue (alternate)	2 beeps
Incoming Phone Call	Red + Blue (alternate)	2 beeps every 2 seconds
Battery Low	Red	2 beeps every 60 seconds

User Control Interface Chart (Headphone)

Power/Call Button	
Action	Function
Press & Hold 2 sec	Power On
Press Once	Answer/Make/End a Call, Voice Dial
Press & Hold 3 sec	Power Off

Remote Control Roller	
Action	Function
Roll Up	Volume Up
Roll Down	Volume Down
Roll Up & Hold 2 sec	Next Music Track
Roll Down & Hold 2 sec	Previous Music Track
Press Once	Play/Pause Music
Press & Hold 2 sec	Reject a Call
Press & Hold 2 sec, together with Power/Call Button	Pairing Mode

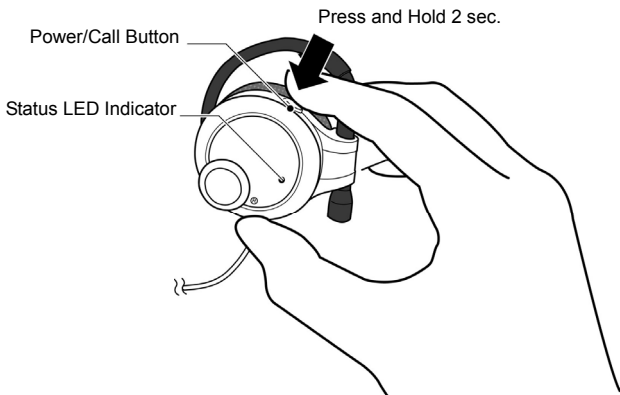


Power On/Off i-PHONO mini

< If this is the first time you use the i-PHONO mini headphone and stereo transmitter, please refer to the next lesson to **FULLY** charge both the devices in advance. >

Power On: Press the Power/Call Button and hold 3 seconds and the Status LED Indicator will begin to flash blue light.

Power Off: Press the Power/Call Button and hold 2 seconds.



Charging i-PHONO mini

Before you start to charge the i-PHONO mini headphone and stereo transmitter, please **POWER OFF** the both two devices..

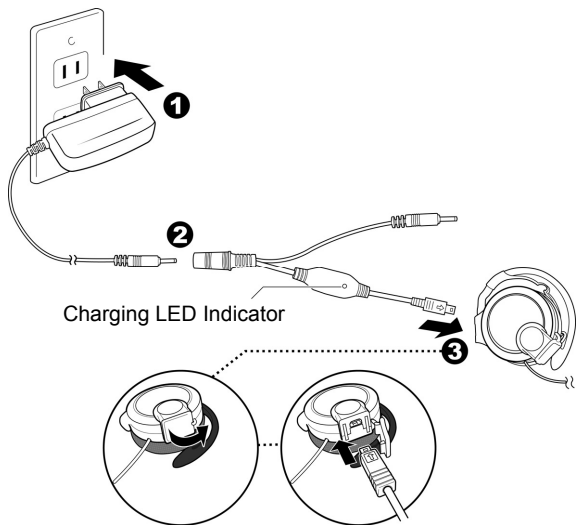
Step-1: Plug the AC power adapter in to the interior outlet.

Step-2: Connect the AC power adapter with the Y-splitter power cable.

Step-4: Open the soft rubber cover which is attached to the headphone's left side speaker. Then, Plug the flat-squared terminal of the Y-splitter Power Cable into the chare socket of the headphone.

Please refer to the following chart to know the charging status:

Charging LED Indicator (Y-splitter Power Cable) for Headphone	
Red	Charging Mode
Green	Fully Charged

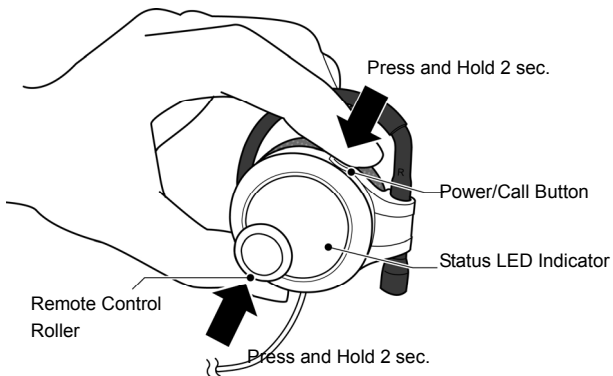


Pairing the Headphone

Step-1: Power on the headphone.

(If the headphone is already on, please disconnect all Bluetooth services between the headphone and other devices in advance.)

Step-2: Press Remote Control Roller together with Power/Call Button and hold this position 2 seconds. If the headphone is in the pairing mode, the headphone's Status LED Indicator will begin to flash red and blue light alternately.



Wearing the Headphone

Before you start to charge the i-PHONO mini headphone and stereo transmitter, please **POWER OFF** the both two devices..

Step-1: Swing and open the ear clip.

Step-2: Hold the headphone's main part and wear it on you ear from front to back, from top to down.

Step-3: Adjust the suitable position to fit both sides of your ears.



Using with the Bluetooth-enabled Computer

You can use the i-PHONO mini headphone's stereo (A2DP) and remote control (AVRCP) functions with the Bluetooth-enabled computer which answers the following requirements:

- Windows XP O.S. only
- Both Bluetooth hardware (embedded chipset or USB adapter) and software support A2DP (Advanced Audio Distribution Profile) and AVRCP (Audio Video Remote Control Profile)

The following instruction used BLUETAKE BT007Si Bluetooth USB Adapter and IVT BlueSoleil Bluetooth Software v1.4.9.2 to demonstrate the general procedure.

<Pairing>

Step-1: Follow “Pairing” procedure to make the i-PHONO mini headphone enter to the pairing mode.

Step-2: Open the Bluetooth software and search the i-PHONO mini headphone. Then, you will find out a headphone (headset) icon named “**iPHONO mini**”. Select the device to pair with the computer.

Step-3: Afterward a dialogue box will prompt you for a passkey or PIN. Enter **0000** (a sequence of four zeros) in the dialog box and then click on “OK” or “Confirm”. After the pairing is completed, the headphone (headset) icon will be marked.

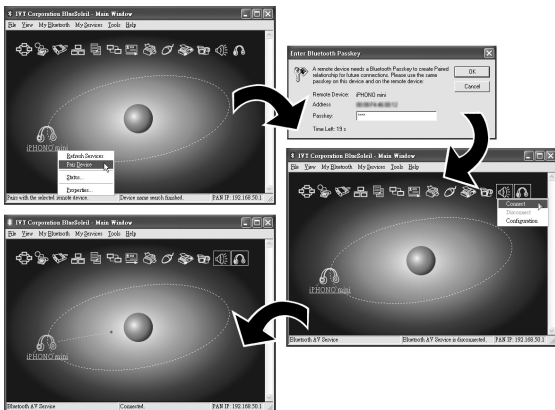
Step-4: Double click on the marked headphone (headset) icon, and then you can discover the Bluetooth service (function) provided by the i-PHONO mini headphone.

Step-5

Connect the computer to the headphone by double-clicking on the A2DP icon which is usually named “Bluetooth AV Service”, “A2DPsink” or “Audio Sink”.

After the connection is established, the headphone (headset) icon in the Bluetooth software window should be changed its color and the Status LED Indicator of headphone should be flash blue light alternately.

Now, the i-PHONO mini headphone is ready to apply the stereo application with the paired computer. Thereafter, you only need to follow up the instruction from **Step-4** if you want to operate the same application.



< Listen to Music and Remote Control >

After you connected the i-PHONO mini headphone with the paired computer via the Bluetooth AV service (A2DP), you can listen to the stereo music played from the computer.

Step-1: Make sure the i-PHONO mini headphone and the computer is connected via of Bluetooth AV service (A2DP).

Step-2: Open the media player application such as Windows Media Player or Apple iTunes, and select media files to play.

If you are unable to hear any sound out of your i-PHONO mini headphone while music or audio is currently playing in a related application, please stop the files being played, open “*Control Panel*” of the Windows system and then double-click on “*Sounds and Audio Devices*” icon. Please make sure that “**Bluetooth AV/HS Audio**”, “**Bluetooth High Quality Audio**” or “**Bluetooth Wave from TOSHIBA**” is selected for “*Sound Playback*” under the “*Audio*” tab in “*Sounds and Audio Devices Properties*” window. Afterward re-launch the application to play the media files again.



Step-3: Consult the following chart to operate the Remote Control Roller of i-PHONO mini headphone and you can control the computer from the headphone to play/pause the music or play the next/previous track.

Remote Control Roller	
Action	Function
Roll Up	Volume Up
Roll Down	Volume Down
Roll Up & Hold 2 sec	Next Music Track
Roll Down & Hold 2 sec	Previous Music Track
Press Once	Play/Pause Music

Notice:

- The procedure for operating the headphone may differ depending on the manufacturer and model. Please consult the user manual of the Bluetooth software you used for information on establishing or terminating a connection between the computer and the headphone.
- Music playback may be interrupted if other Bluetooth devices are currently connected to your computer. When you are listening to music, it is recommended that the stereo headphone be the only connected device.
- Music playback may be interrupted if you are some distance away from the computer, or if there are any obstructions between you and the computer.
- The remote control function of the Bluetooth software you used with the headphone must be compliant with the Bluetooth AVRCP.
- Please link to <http://www.bluetake.com/products/BT450EX.htm> to know more matrices of the media player applications that are compatible with the Bluetooth AVRCP.

< Internet Messenger/Chatting Application >

You can use the i-PHONO mini headphone's mono headset (HSP) functions with the Bluetooth-enabled computer which answers the following requirements:

- Windows XP/2000, Mac OS X 10.3.3 or later versions
- Internet Messenger/Chatting Application such as Skype, MSN Messenger, iChat AV, etc.
- Both Bluetooth hardware (embedded chipset or USB adapter) and software support HSP (Headset Profile)

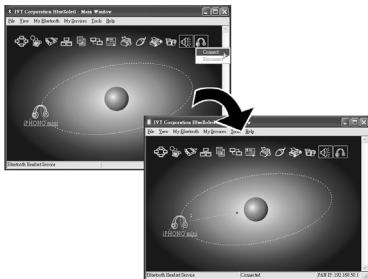
The following instruction used BLUETAKE BT007Si Bluetooth USB Adapter and IVT BlueSoleil Bluetooth Software v1.4.9.2 to demonstrate the general procedure.

Follow < Pairing and Connecting > Step-1 ~ Step-3 to pair the headphone with the computer.

Step-4: Double click on the marked headphone (headset) icon, and then you can discover the Bluetooth service (function) provided by the i-PHONO mini headphone.

Step-5: Connect the computer to the headphone by double-clicking on the headset icon which is usually named "Bluetooth Headset Service" or "Headset". If the service has been properly detected, the i-PHONO mini headphone is being called, and a tone will accordingly sound in the headphone. Please press the Power/Call Button of headphone to answer while you hearing the ring tone in headphone.

After the connection is established, the headphone (headset) icon in the Bluetooth software window should be changed its color and the Status LED Indicator of headphone should be flash blue light alternately.



Step-7: Open the Internet messenger application such as MSN Messenger, iChat AV, etc.

If you are unable to hear any sound out of your i-PHONO mini headphone while music or audio is currently playing in a related application, please stop the files being played, open “Control Panel” of the Windows system and then double-click on “Sounds and Audio Devices” icon. Please make sure that “Bluetooth AV/H/S Audio”, “Bluetooth Audio” or “Bluetooth Wave from TOSHIBA” is selected for “Sound Playback” and “Sound Recording” under the “Audio” tab in “Sounds and Audio Devices Properties” window. Afterward re-launch the Internet messenger application.



Step-8: Make sure that “Bluetooth AV/HS Audio”, “Bluetooth Audio” or “Bluetooth Wave from TOSHIBA” is selected for speaker and microphone settings of the application you used. Afterward the i-PHONO mini headphone is ready to be applied with the Internet messenger application.



ex. Skype™

Notice:

- The procedure for operating the headphone may differ depending on the manufacturer and model. Please consult the user manual of the Bluetooth software you used for information on establishing or terminating a connection between the computer and the headphone.
- Communicating may be interrupted if you are some distance away from the computer, or if there are any obstructions between you and the computer..
- Please link to <http://www.bluetake.com/products/BT450EX.htm> to know more details about the settings of diverse Internet messenger applications.

Using with the Bluetooth-enabled Mobile Phone

Besides the wireless stereo application, the i-PHONO mini headphone can be used for mobile hands-free communication with mobile phones which support either the Headset or Hands-free profile of Bluetooth wireless technology.

You can answer or make a phone call via the i-PHONO mini headphone with the Bluetooth-enabled mobile phone while you are listening to music. Once you end the call, the stereo streaming will come back automatically to the headphone.

<Pairing>

Step-1: Follow “Pairing” procedure to make the i-PHONO mini headphone enter to the pairing mode. If the headphone is already on, please disconnect all Bluetooth services between the headphone and other devices in advance.

Step-2: Follow the operating instruction for your Bluetooth mobile phone to start the pairing process. Typically, this is done by going to a “Connect” or “Setup” menu and then selecting the options to search the headphone that is still in the pairing mode.

Step-3: The mobile phone’s display should indicate to you that it found the headphone named “iPHONO mini” and ask if you want to pair it. Please press the corresponding button such as “Ok”, “Yes” or “Accept” to confirm this.

Step-4: The mobile phone’s display should then prompt you for a passkey or PIN. Enter **0000** (a sequence of four zeros) and the display should prompt the pairing result. If the pairing is unsuccessful, please power off the headphone, re-launch it, return to Step-1, and try again.

<Answer a Call>

Step-1: If there is an incoming call while you are listening to the streaming music, you will hear 2 beeps by 2 seconds from headphone.

Step-2: Just consult the following **figure-A** to press the Power/Call Button of headphone once to answer the call.

<Make a Call>

Step-1: Use the mobile phone's keypad to dial the phone number.

Step-2: Press mobile phone's "Send" or "OK" key. The mobile phone initiates the call and transfer the call from the mobile phone to the headphone.

<End a Call>

Use either of the following methods to end a call.

- To end a call from the headphone –Just consult the following **figure-A** to press the Power/Call Button of headphone.
- End a call from the keypad of mobile phone.

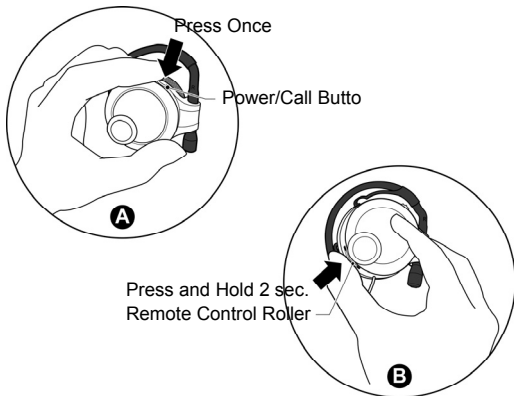
In the meantime you are answering or making a call, the headphone will switch the connection from the playback (A2DP) to the mobile phone (HSP or HFP); moreover, the streaming music will be paused temporarily. After you ended the call, the music will be played and streamed continuously.

<Reject a Call>

If there is an incoming call and you don't want to answer while you are listening to the streaming music.

Step-1: Just consult the following **figure-B** to press the Remote Control Roller of headphone and hold the position 2 seconds to reject the incoming call.

Step-2: After one beep from the headphone, the incoming call will be rejected and the music will be played and streamed continuously.





European Union Regulatory Notice

This product complies with the following EU Directives:

- CE R&TTE RF Test: EN 300 328-1
- CE R&TTE EMC Test: EN 301 489-1 & 17
- CE R&TTE LVD Test: EN 60950

The telecommunications functionality of this product may be used in the following EU and EFTA countries: Austria, Belgium, Cypress, Czech Republic, Denmark, Estonia, Finland, France, Germany, Greece, Hungary, Iceland, Ireland, Italy, Latvia, Lichtenstein, Lithuania, Luxembourg, Malta, Netherlands, Norway, Poland, Portugal, Slovak Republic, Slovenia, Spain, Sweden, Switzerland, and United Kingdom.

FCC Statement

Operation is subject to the following two conditions:

- 1) this device may not cause interference and
- 2) this device must accept any interference, including interference that may cause undesired operation of the device.

FCC RF Radiation Exposure Statement

This equipment complies with FCC radiation exposure limits set forth for an uncontrolled environment. End users must follow the specific operating instructions for satisfying RF exposure compliance. This transmitter must not be co-located or operating in conjunction with any other antenna or transmitter.

Wireless Notice

In some environments, the use of wireless devices may be restricted. Such restrictions may apply aboard airplanes, in hospitals, near explosives, in hazardous locations, etc. If you are uncertain of the policy that applies to the use of this device, please ask for authorization to use it prior to turning it on.

DGT Statement

根據交通部低功率釐理辦法之規定：

第十四條

經型式認證合格之低功率射頻電機，非經許可，公司、商號或使用者均不得擅自變更頻率、加大功率或變更原設計之特性及功能。

第十七條

低功率射頻電機之使用不得影響飛航安全及干擾合法通信，經發現有干擾現象時，應立即停用，並改善至無干擾時方得繼續使用。

第二十條

輸入、製造低功率射頻電機之公司、商號或使用者違反本辦法規定，擅自使用或變更無線電頻率、電功率者，除依電信法規定處罰外，電信總局並得撤銷其型式認證證明或型式認證標籤。

Battery Warning

WARNING : Both i-PHONO mini headphone and transmitter contain lithium ion rechargeable batteries. To reduce the risk of fire or burns, do not disassemble, crush, puncture, short external contacts, or dispose of in fire or water.

To reduce the risk of personal injury, electrical shock, fire or damage to the equipments, please follow all instruction below :

- Do not expose the i-PHONO mini equipments (headphone and transmitter) and AC/DC power adapter to rain or moisture.
- Do not install, place or use the i-PHONO mini equipments near any heat source such as stove, radiator, oven, toaster , coffee maker or other apparatus (including microwave oven) that produce heat.
- Always use the original the AC/DC power adapter and Y-splitter power cable provided with the i-PHONO mini retail box to charge the i-PHONO mini equipments (headphone and transmitter). Using any incorrect power supply device will cause damage to the i-PHONO mini equipments and void the warranty.
- Do not pull on a power cord or cable. When unplugging from the electrical outlet, grasp the power cord by the plug or, in the case of the AC/DC power adapter, grasp the AC/DC power adapter and pull out from the electrical outlet.